



## MULTIPLE AREAS



Before



After

Deanne Kiba, MD

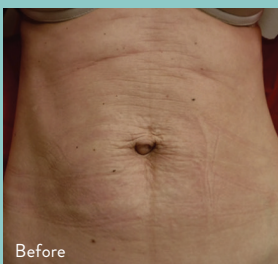


Before

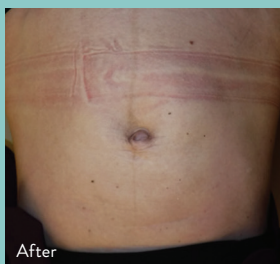


After

Heather Roberts, MD



Before



After

Tricia Shimer, MD

# EVOLVETITE

by INMODE

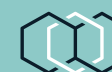
# EVOLVETITE

by INMODE

HANDS-FREE  
BODY TREATMENT



REFINE YOUR BODY



INMODE

aesthetic solutions

[InMode Australia](#) [InMode\\_Australia](#) [InModeAustralia](#)

INFO@INMODE.COM.AU | INMODE.COM.AU

# EVOLVE TITE

## NON-INVASIVE CONTOURING SOLUTION IMPROVES THE APPEARANCE OF SKIN

### WHAT IS EVOLVE TITE?

Evolve Tite delivers an innovative hands-free aesthetic solution to remodel your skin. It is a quick and easy treatment that can be done over lunchtime and is conducted the comfort of a treatment room. Treatments can be customised to address your specific needs.

### HOW DOES EVOLVE TITE WORK?

Evolve Tite leverages clinically proven radiofrequency technology to deliver volumetric heat to the skin's subdermal layers.

Evolve Tite was developed based on the clinical success of the proprietary A.C.E. (Acquire, Control and Extend) technology. A.C.E. technology targets deep within the skin to ensure that no areas are under, or over-treated, thereby maximising results and providing consistent outcomes.

## CUSTOMISABLE HANDS-FREE BODY TREATMENTS

*Remodel multiple areas simultaneously  
and reverse skin laxity.*



### HOW EFFECTIVE IS THE TREATMENT?

Evolve Tite is recommended for individuals who are looking for a non-invasive skin treatment to address specific areas that require remodelling such as the arms, abdomen and legs. Tite can improve blood circulation and will provide a natural looking younger appearance. It is a very effective treatment that delivers exceptional results.

Evolve Tite is designed with a Patient Call Button so you can easily pause your treatment at any time and have clinic staff make adjustments to ensure your comfort.

### DOES THE EVOLVE TREATMENT HURT?

Most clients find Evolve Tite comfortable. During your treatment you can expect a warming of your skin similar to a hot stone massage. As the radiofrequency penetrates the dermal layers patients typically notice a reduction in the folds of the skin.

### HOW MANY SESSIONS ARE REQUIRED?

Your practitioner will recommend the optimal number of sessions to be performed based on your personal objectives. Treatment times and frequency will be specifically tailored to obtain the optimal results. You will begin to see gradual improvements in the treatment area following your first few sessions.

### WHAT KIND OF POST PROCEDURE CARE IS REQUIRED?

There is absolutely no recovery period or downtime associated with Evolve Tite. It is a quick and comfortable treatment that can be done over your lunchtime, allowing you to return to your normal activities immediately. Patients will notice redness and warmth in the treated area which will subside after a few hours.

Ask your provider to see if Evolve Tite is right for you.