



DIOLAZE

FUSION TECHNOLOGY

FASTEST MULTI-WAVELENGTH DEVICE WITHOUT COMPROMISING SAFETY OR EFFICIENCY

The Triton workstation offers the unique blend of **three different laser wavelengths**, in multiple outputs, to maximize the ability for clinics to treat any patient in a uniquely customizable manner. This ensures that the Triton is the only hair removal workstation that any clinic requires. Triton optimizes power, speed, and results, making this the ultimate hair removal system.



ALEXANDRITE 755

The Alexandrite 755 nm laser is one of the most effective lasers for treatment on light skin because it has a strong absorption in hair melanin.

TRITON
DUO LIGHT

755|810

DIODE 810

The Diode 810 nm laser is one of the most common lasers available, as it is the middle ground between an Alexandrite and a Nd:YAG, with overall safe and effective results.

TRITON
DUO DARK

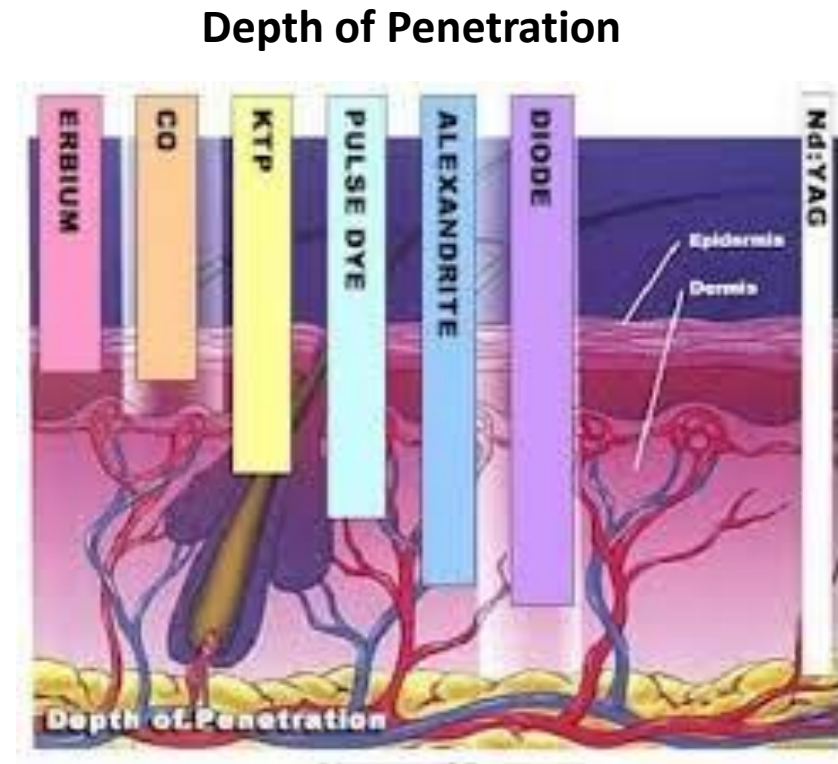
810|1064

ND: YAG 1064

The Nd:YAG 1064 nm laser is a "safe" choice for darker skin types, however the 1064 wavelength does not absorb well in hair melanin.

BEST IN CLASS WAVELENGTHS

- Alexandrite laser 755nm
 - Effective
 - Strong peri-follicular effect
 - Not safe for skin type IV or greater
- Diode 810nm
 - Effective
 - Can be optimized for darker skin
- Nd:YAG 1064nm
 - Effective only for black hairs
 - Very safe for up to skin type VI



DIOLAZE XL SPECIFICATIONS

Specifications

Technology:	Diode laser
Spot Size:	3cm ² (12mmx26mm)
Wavelength:	810nm/ 755nm + 810nm / 810 + 1064nm
Fluence:	5-40 J/cm ²
Pulse Duration:	Short / Long (Range from 8 – 185ms, automatically adjusted according to fluence)
Cooling:	Triple (3PC)/Controlled
Gold Standard fluence and time on tissue	Maintains speed at all fluences

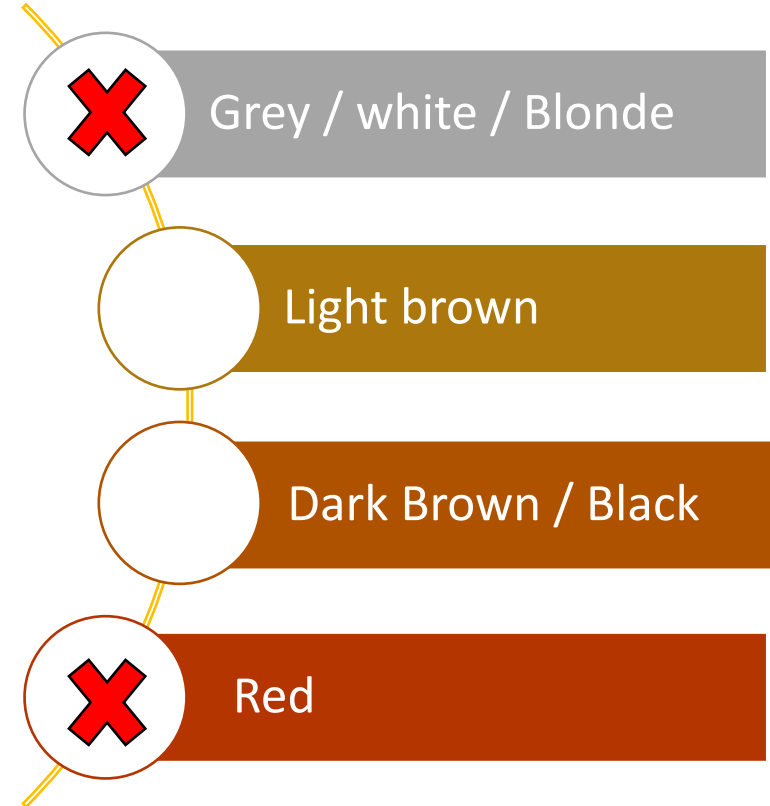
DIOLAZE XL



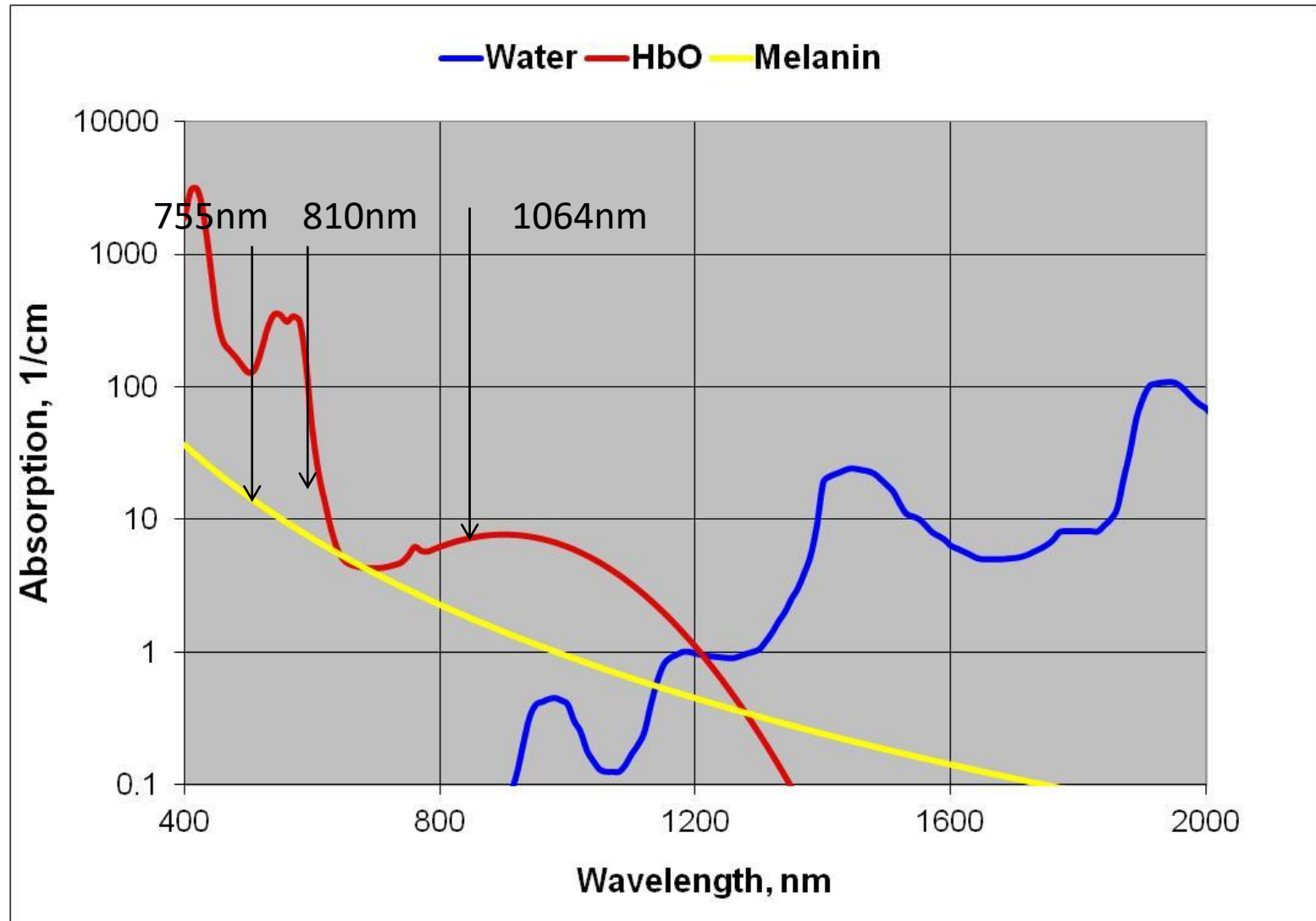
Fitzpatrick Classification Skin Types

- I** Always burns, never tans
- II** Always burns, sometimes tans
- III** Sometimes burns, always tans
- IV** Never burns, always tans
- V** Moderately pigmented
- VI** Black Skin

HAIR COLOUR



MOST POPULAR WAVELENGTHS FOR HR



COOLING

Strongest 3P cooling provides highest comfort

- Pre-Cooling Plate
- Parallel Cooling at the Sapphire Tip
- Post-Cooling Plate



PROTECTIVE EYEWEAR

Operator Glasses: OD ≥ 5 for 800 nm

Diolaze is a Class IV laser : Eye and skin hazard for both direct and scattered exposure

Laser Hazard Class	4	3B	3R (SLAs)	2	1
Risk/Hazard Potential	High	Moderate	Low	Low	None (ALARA)

Eye protection MUST be worn by operator and patient and eye protection must filter the correct wavelength/ optical density



TREATMENT

CONSULTATION

1. Identify **Treatment areas**
2. Discuss **medical history**, medications to ensure suitability for procedures on offer (ensure no recent UV exposure or fake tan)
3. Discuss how laser technology works , treatment recommendations and **expectations**
4. Explain **what to expect** (skin prep such as shaving hair/sensations/discomfort)
5. Explain **post care** requirements

FAQ

Will the treatment hurt ? *You will experience a warm sensation and a slight 'flick' of a rubber band sensitive areas such as bikini line clients may experience more heat*

How many treatments are required ? *4-10 sessions depending on hair/skin colour and treatment area (note that individual medical history, hormones and medications may contribute to overall results*

Will I have down time ? *Mild erythema is often reported, followed by PFI (localized redness within the follicle) this can last from 2 – 72 hours. Most Hair removal treatments have minimal down time*

What areas can you treat ? *Any hair bearing areas, terminal hairs are ideal for laser HR, the darker & thicker the hair the better. ** please use your digression when treating hair on the face*

Will it remove all of my hair? *70 – 90% Hair reduction, please note there are various factors that contribute to results (Hair colour, skin colour, hair thickness, medication, pregnancy, hormones, medical history*

PRE-TREATMENT CONSIDERATIONS

- Ask the patient to come with clean skin without creams/oils/ deodorant
- Clean the skin and the Diolaze hand piece using 70% alcohol
- Observe the skin for any raised lesions, hair or fake tan
- Shave any missed hair to ensure effective treatment
- Cover and avoid any tattoos
- Take before and after photos of treatment area
- Mark treatment area into zones that are about 2-4 applicator placements in size for more efficient and effective treatment results

CONTRAINDICATIONS

- Pregnancy and breastfeeding.
- Impaired immune system due to immunosuppressive diseases such as AIDS and HIV or use of immunosuppressive medications.
- Patients with history of diseases stimulated by heat, such as recurrent Herpes in the treatment area, may be treated only following a prophylactic regimen.
- Severe concurrent conditions, such as cardiac disorders, sensory disturbances.
- Any active condition in the treatment area, such as sores, psoriasis, eczema, and rash.
- History of skin disorders, keloids, abnormal wound healing, as well as very dry and fragile skin.
- Poorly controlled endocrine disorders, such as diabetes or thyroid dysfunction and hormonal virilization. Results can not be guaranteed.
- Do not treat over tattoo and permanent makeup and treat away from the tattoo at least the width of the treatment tip!

CONTRAINDICATIONS CONTINUED

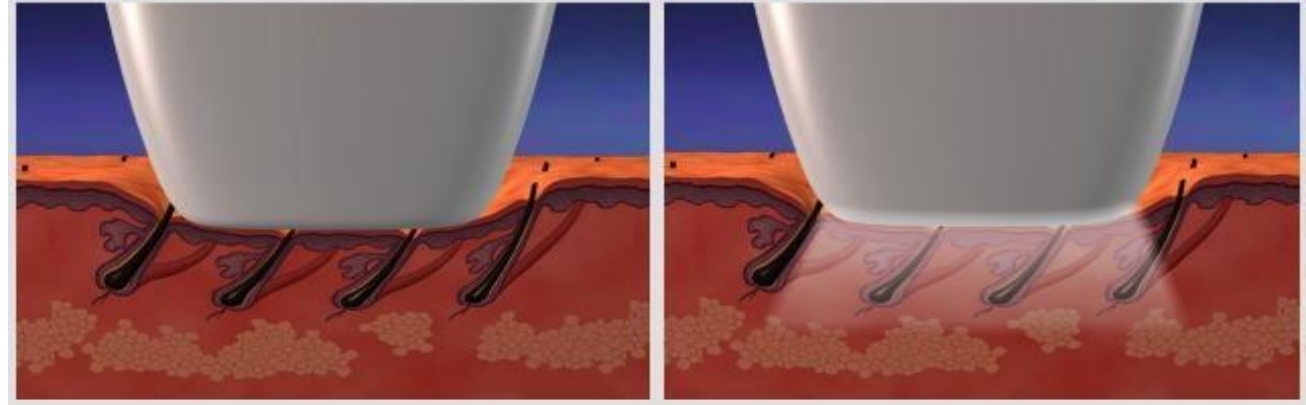
- Current or history of skin cancer, or current condition of any other type of cancer, or pre-malignant moles.
- Use of Isotretinoin (Accutane®) within 6 months prior to treatment.
- Certain delay is recommended if other recent treatments such as light, laser or RF were performed on treated area.
- Known skin photosensitivity or using drugs increasing skin photosensitivity.
- Diseases that may be stimulated by light, such as epilepsy, lupus and urticaria.
- Vitiligo.
- Excessively tanned skin from sun, tanning beds or tanning creams and sprays within the last two weeks.
- As per the practitioner's discretion, refrain from treating any condition which might make it unsafe for the patient.
- Do not treat the upper eyelids or the lips!

PHOTOTHERMOLYSIS

PHOTO – LIGHT

THERMO – HEAT

LYSIS – DESTRUCTION

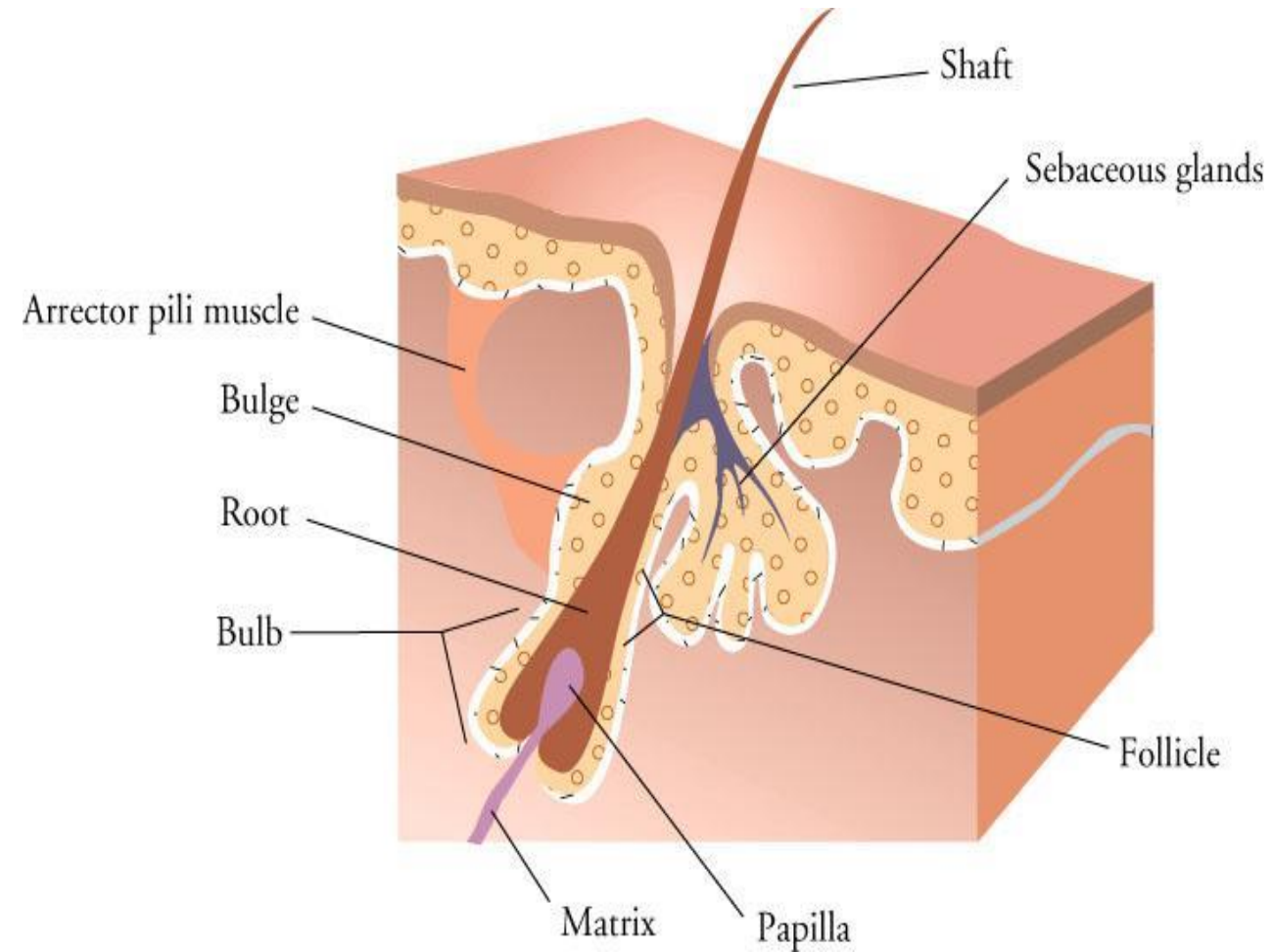


This principle explains the transformation of light into heat when absorbed by our select chromophore (eg Melanin/blood)

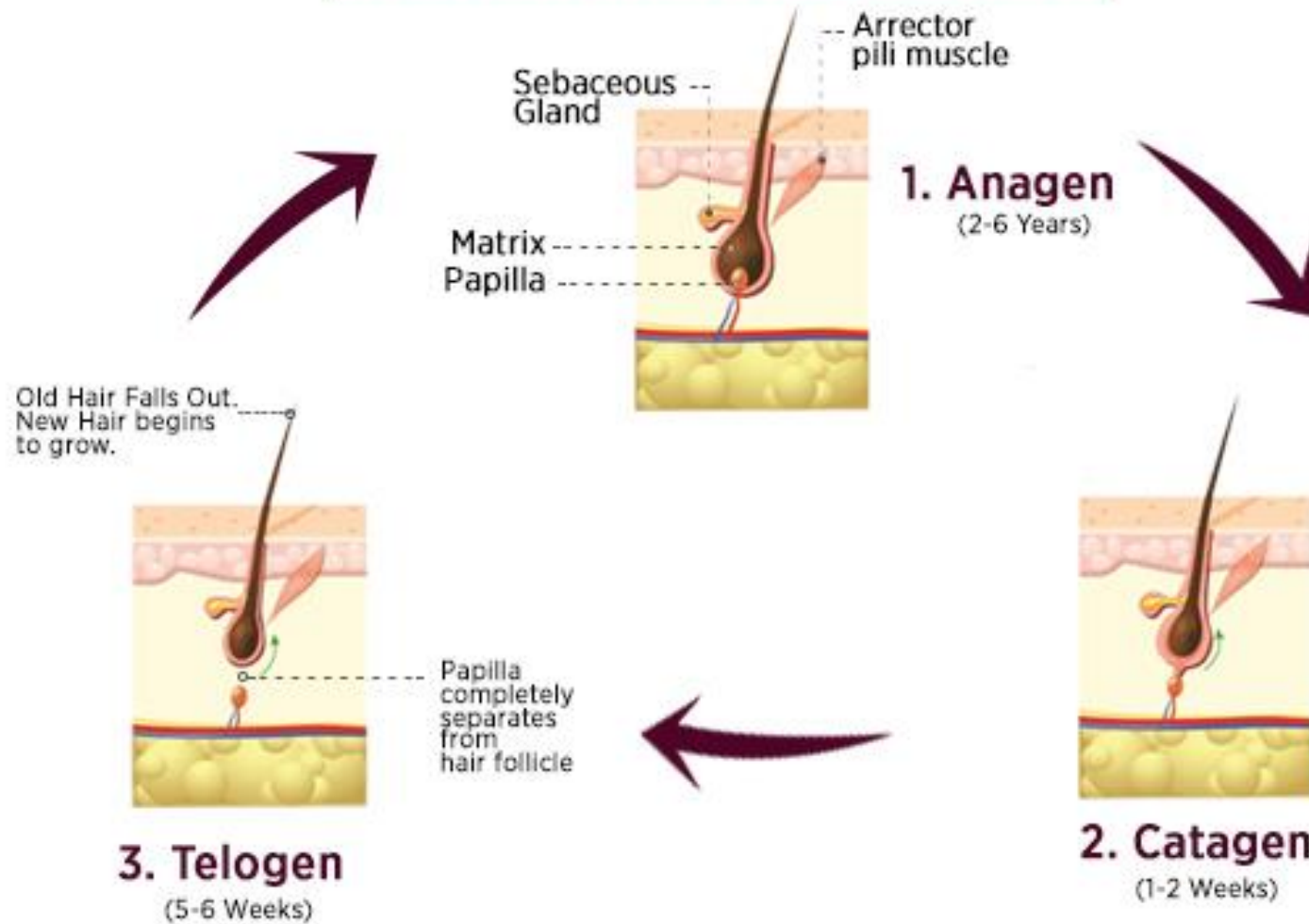
Resulting in the destruction (lysis) of the target cells by the high temperature.

LASER / HAIR INTERACTION

- Melanin in the hair shaft absorbs the light which is transformed to heat
- The heat is conducted to the surrounding follicular cells and damage them
- Immediate response: Perifollicular erythema/edema



HUMAN HAIR GROWTH



Hairs in the ANAGEN stage are effectively treated therefore we need multiple sessions to achieve permanent hair reduction

DIOLAZE CLINICAL END POINTS

- Modest PEED
 - Moderate Peri-follicular erythema and Edema
- Singed hair - Photocoagulation
 - hair from follicle ejected or vaporized
 - can see singed hair on skin or on tip
 - gel becomes brownish
 - odor of singed hair present



TREATMENT MODES

Skin Type	Fluence [J/cm ²]			Pulse Width	Cooling
	755/810	810	810/1064		
I	15-25	20-30	*22-32	Short	Strong
II	12-22	18-28	*16-26	Short	Strong
III	10-20	15-25	14-24	Short/Long	Strong
IV	8-18	12-20	12-22	Long	Strong
V	5-15 with caution!	8-16	10-20	Long	Strong
VI	N/A	5-10	8-18	Long	Strong

Pulse Mode

- **Single and 1 pps Pulse Modes**, all fluence values up to 40J/cm² may be used.
- **2 pps Pulse Mode**, fluence values up to 25J/cm² may be used.

Glide Pulse Mode (5 pps), fluence values up to 10J/cm² may be used. The Glide Mode may be used on skin types V-VI with 810/1064 handpiece only.

IMPORTANT NOTES

TREATMENT GUIDELINES

- Ensure skin is **clean** and gel applied
- Apply hand piece to the treatment area ensuring full contact
- Press the 'foot peddle' then the activation trigger to fire the laser
- Fast treatment time – up to 6cm^2 per sec with Glide feature
- Spot size of 12 mm X 26 mm (3cm^2)
- Fluence of 5-40J/ cm^2
- Pulse duration – Short for fine hair and fair skin type (Skin type 1-3), Long for coarse hair and darker skin type (Skin type 4-6)
- **Strong cooling** at maximal energy and any environmental conditions
- Repetition rate - **1pps, 2pps, glide**
- Little to no pain due to **3P Cooling**

POST CARE AND & TREATMENT SCHEDULE

- **Follow Inmode Post care form** ** found on resource centre**
- **Cooling** the skin during/ post-treatment can reduce discomfort and excessive skin response
- **Clean** the skin prior to gel application
- **Apply SPF** on ALL exposed areas post treatment – avoid UV exposure
- **Downtime** Modest PEED
 - Moderate Peri-follicular erythema and Edema

Treatment schedule:

- **4-10 sessions** (depending on skin and hair colour)
- Treatment intervals will be determined by the area(s) you are treating (4-8 weeks is a normal guideline)
- Body Hair **6-8 weeks** – Facial Hair **4-6 weeks** extending the interval once the hair growth slows down (approx. treatment # 3)
- Best timing for subsequent treatments is typically when hair growth is visible