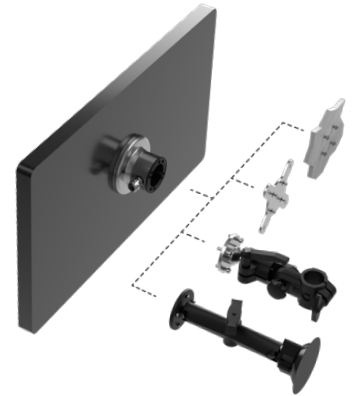
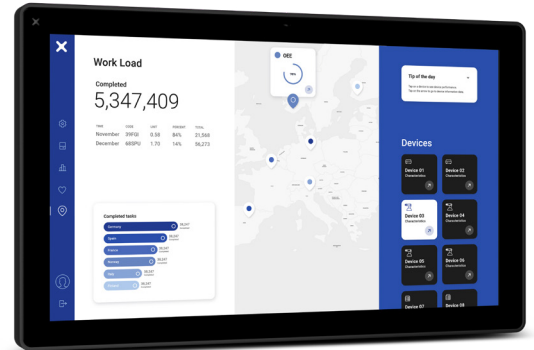


JSmart721M | Web HMI Tech-Note

Web HMI 21.5" TFT, PCAP Touch, 8GB Flash, PoE Ethernet, Wi-Fi, NFC, Web Browser

- Chromium based HTML5 Browser
- Easy to use browser setting application
- 21 inch screen, resolution 1920x1080 pixel
- PCAP Touchscreen Multitouch
- 10/100 Ethernet port PoE
- Wi-Fi Connection and NFC Device
- Full IP protection; ideal for mounting-arm installation
- Operating temperature -20°C to +55°C
- UL 61010-1 approval
- Dedicated HMI support arm system
- Includes environment and motion sensors



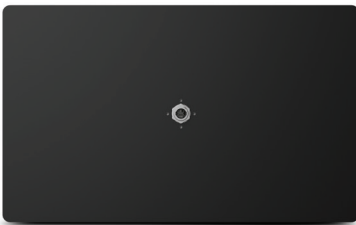
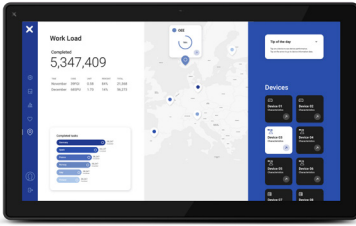
Highlights

The JSmart721M Web excels in all IoT edge applications in industrial, ship and building automation where a powerful HTML5 web browser and devices that can operate in critical areas are required.

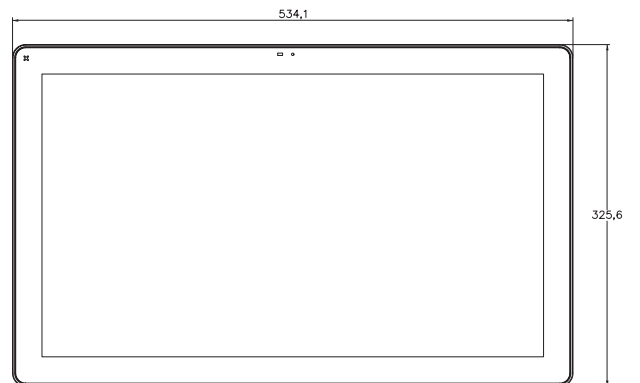
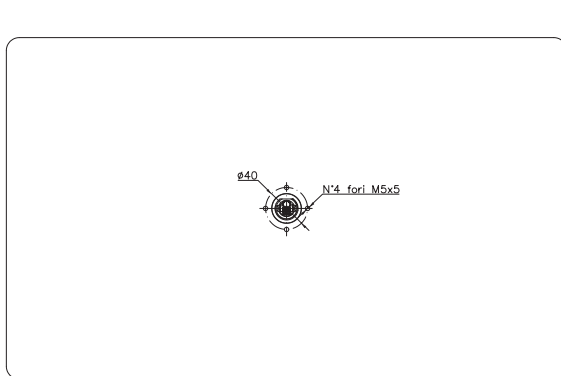
The special features of this web based HMI are the sleek and elegant design, the 21 inch multi-touch capacitive touch-screen display with robust glass front, and the ability to connect the device via a single Power-over-Ethernet (PoE) cable. This technology allows maximum flexibility and efficiency in installation as well as full IP67 protection with the use of appropriate accessories and connectors.

The Wi-Fi interface improves the integration capability of the device while NFC expands the possible applications. JSmart721M Web include a Chromium-based HTML5 browser that supports kiosk mode operation and support Corvina Cloud secure connectivity.

JSmart721M | Web HMI - Technical Data



System Resources	
Display - Colors	21.5" TFT - 16M
Resolution	1920x1080
Brightness	400 cd/m ²
Dimming	Yes
Touchscreen	Projected Capacitive, Multitouch
CPU	64-bit RISC Quad core - 1.6 GHz
Operating System	Linux
Flash	8 GB
RAM	2 GB
Real Time Clock, RTC Back-up	Yes
Interface	
Ethernet port	10/100 PoE
USB port	1 (Host V2.0, max. 500 mA, available with special cable)
LED	1 RGB
Sensors	Temperature, 3-Axis Accelerometer
Buzzer	Yes
NFC	ISO/IEC 14443A
Wi-Fi	IEEE 802.11a/b/g
Ratings	
Power supply	IEEE 802.3bt 4PPoE
Power Consumption	35W max.
Battery	Rechargeable Lithium battery, not user-replaceable
Environment Conditions	
Operating Temperature	-20° to +55° C (vertical installation)
Storage Temperature	-30°C to +80°C
Operating / Storage Humidity	5-85% RH, non-condensing
Protection Class	IP67 (requires appropriate accessories and cables) - Type: 1, 12, 4x
Dimensions and Weights	
Faceplate LxH	534.1x325.6 mm (21.02x 12.81")
Depth D+T	26.5 mm (1.04")
Weight	6.0 Kg
Approvals	
CE	Radio Equipment Directive 2014/53/EU (RED)
UL	cULus: UL61010-1 / UL61010-2-201
UL	cULus: Class 1 Div 2
RCM	Yes



Ordering Information

Model	Part Number	Description
JSmart721M Web	+JS721GE2U5PW	Web HMI 21.5" TFT, 1920x1080, PCAP Touch, 8GB Flash memory, PoE Ethernet, Wi-Fi, NFC, Web Browser