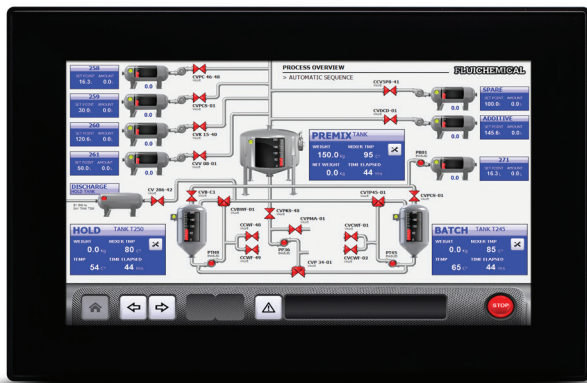




## eX715 Tech-Notes

15.6" TFT color with multitouch projected capacitive touchscreen.

3 Ethernet ports, 1 serial port, 2 USB ports. JMobile runtime.



- 15.6" TFT color display, resolution 1366x768 pixel, 16M colors.  
Dimmable LED backlight
- Projected capacitive touchscreen. True glass design.  
Multitouch operation
- 3 Ethernet ports
- SD Card slot
- 2 Plug-in modules for system expansion

## Overview

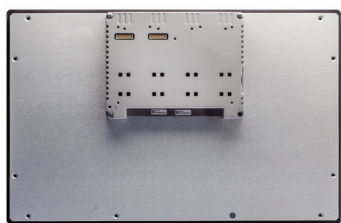
eX700 Series HMI products combine state-of-the-art connectivity features and top performance in a great design. Products have been designed as IoT edge devices with the combination of a powerful controller with networking capability and outstanding communication options including client/server OPC UA. They are the ideal choice for all demanding IoT edge applications in factory, marine and building automation.

The glass projected capacitive touchscreen and the brilliant 15.6" widescreen display with resolution of 1366x768 guarantee great optical performance; with the support of multitouch gesture programming they can create the most natural human interfaces.

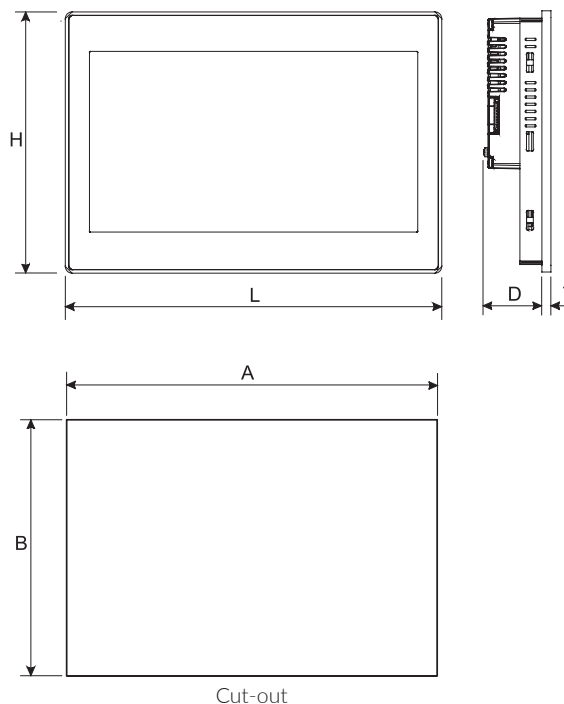
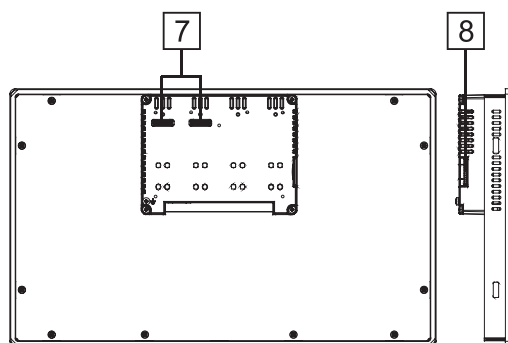
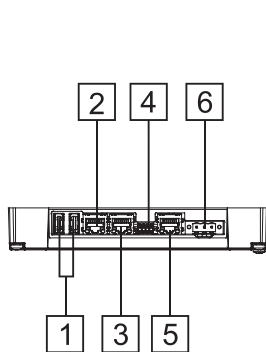
eX Series 700 HMI products have been designed to run the JMobile software.

- JMobile runtime included
- Requires JMobile V2.6 or higher
- Supports JMcloud secure connectivity with full network separation
- OPC UA Server and Client
- Optional CODESYS V3 runtime with choice of EtherCAT, Profinet, Ethernet IP and Powerlink

Technical Data



<b>System Resources</b>	
Display - Colors	15,6" TFT LED - 16M
Resolution	1366x768, HD
Brightness	400 Cd/m <sup>2</sup> typ.
Dimming	to 0%
Touchscreen	True Glass Projected Capacitive, Multitouch
CPU	ARM Cortex-A9 quad core 800 MHz
Operating System	Linux RT
Flash	8 GB
RAM	2 GB
Real Time Clock, RTC Back-up, Buzzer	Yes
<b>Interface</b>	
Ethernet port	3 (port 0 - 10/100/1000, port 1 - 10/100, port 2 - 10/100)
USB port	2 (Host V2.0, max. 500 mA)
Serial port	1 (RS-232, RS-485, RS-422, software configurable) Max 3 serial ports using plug-in modules.
SD card	Yes
Expansion	2 slot for plug in modules
<b>Ratings</b>	
Power supply	24 Vdc (10 to 32 Vdc)
Current Consumption	1.2 A at 24 Vdc (max.)
Input Protection	Electronic
Battery	Rechargeable Lithium battery, not user-replaceable
<b>Environment Conditions</b>	
Operating Temp	-20° to +60 °C (vertical installation) Plug-in modules and USB devices may limit max temperature to +50 °C
Storage Temp	-20°C to +70°C
Operating / Storage Humidity	5-85% RH, non condensing
Protection Class	IP66 (front), IP20 (rear)
<b>Dimensions and Weights</b>	
Faceplate LxH	422x267 mm (16.6x10.5")
Cutout AxB	411x256 mm (16.18x10")
Depth D+T	56+8 mm (2.20+0.33")
Weight	4.1 Kg
<b>Approvals</b>	
CE	Emission EN 61000-6-4, Immunity EN 61000-6-2 for installation in industrial environments
UL	cULus: UL61010-1 / UL61010-2-201
DNV-GL	Yes



- 1 USB ports 1 and 2
- 2 Ethernet port 2 (10/100 Mb)
- 3 Ethernet port 1 (10/100 Mb)
- 4 Serial port
- 5 Ethernet port 0 (10/100/1000 Mb)
- 6 Power supply
- 7 2 Expansion slots for plugin modules
- 8 SD Card slot

Ordering Information

Model	Part Number	Description
eX715	+EX715U5P1	15.6" widescreen TFT color with multitouch projected capacitive touchscreen. 3 Ethernet ports, 1 serial port, 2 USB ports. JMobile runtime.