

VW



VW | Video Wall

DYNICS VW75 is an easy to configure all-in-one system with multiple display capabilities. The VW75 is capable of displaying a single image over all 4 displays or 4 independent images at once. This plug and play system is ideal for creative and dynamic digital signage, information relay, command and control operations, and more.

- Plug and Play
- Optional Soundbar
- 100~240VAC (3-Pin) Power Entry
- 150" Diagonal Display Size
- 24/7 Operation
- Reusable Wood Crate
- Wireless Rechargeable Keyboard (100 ft. Range)

DISPLAY SPECIFICATIONS

SIZE	4x 75" (150" Diagonal)
RESOLUTION	4k (FHD 1920 x 1080 pixels)
VIEW ANGLE	H: -89°/+89°, V: -89°/+89°
CONTRAST	4000:1
BRIGHTNESS	400 nits
ASPECT RATIO	16:9
LENS	Laminated Glass (Non-Touch)
LCD LIFE	50,000 Hour Backlight Half-Life
ENCLOSURE	Metal Powder Coated Steel / Standard Color Black / Custom Colors and Finishes Available

PC SPECIFICATIONS

COMPUTER I/O	MINI-ITX Q170 1x 1Gb Ethernet Port (Supporting Intel® AMT™) 1x 1Gb Ethernet Port 1x RS232 Port 4x USB 3.0 Ports 4x USB 2.0 Ports 2x PS/2 Ports (Keyboard & Mouse) 1x DVI-D Port 2x DisplayPorts V1.2 2x Audio Jacks (Mic-In/Line-Out)
CPU	6th Gen Intel® Core™ i5 6500TE / i7 6700TE
CPU SPEED	i5 – 2.3GHz, 3.3GHz Turbo (4 Cores, 4 Threads) i7 – 2.4GHz, 3.3GHz Turbo (4 Cores, 8 Threads)
MEMORY	Up to 32GB DDR4
STORAGE	240GB – 2TB SATA SSD / 1TB HDD
GPU	Quadro P620
OPERATING SYSTEM	-Windows® 7 Professional (64-bit) - Windows® Embedded Standard 7 (64-bit) -Windows® 10 Enterprise IoT LTSC 2016 (64-bit) - Windows® 10 Enterprise Pro (64-bit) -Windows® 10 Enterprise IoT LTSC 2019 (64-bit) -Linux Ubuntu
POWER SUPPLY	100~240VAC (3-Pin)
TEMPERATURE	Operating: 0°-50°C 32°-122°F Non-Operating: -25°-60°C -13°-140°F
RELATIVE HUMIDITY	Non-Condensing: 20% - 80%
INCLUDED COMPLIANCE	2x 6 ft. Power Cable / Wireless keyboard European Union Directive 2011/65/EU (RoHS)
WARRANTY	24-Month limited warranty. Extended warranty available, contact DYNICS for more details.



VW



DIMENSIONS, WEIGHT AND POWER CONSUMPTION

SIZE	75" (150" Diagonal)
HEIGHT	83.1" (2111.7mm)
WIDTH	137.9" (3501.1mm)
DEPTH	14.0" (354.1mm)
WEIGHT	1600 lbs.*
POWER CONSUMPTION	940 Watts**

*Weights are approximate, contact DYNICS for details.

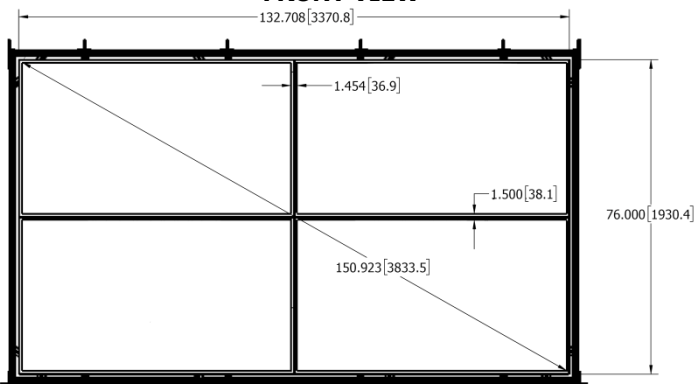
**Power Consumption based on maximum ratings, actual ratings vary significantly based on components used.

OPTIONAL SOUNDBAR (Up To 105db Max)

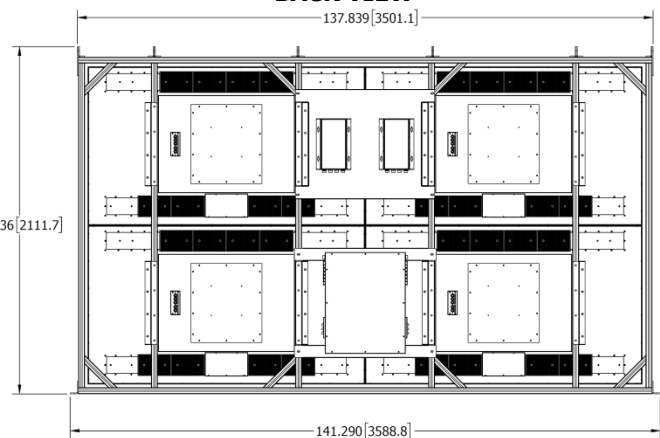


MECHANICAL DRAWINGS

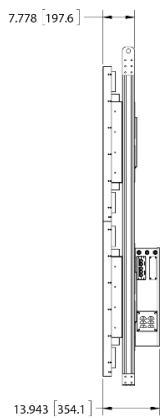
FRONT VIEW



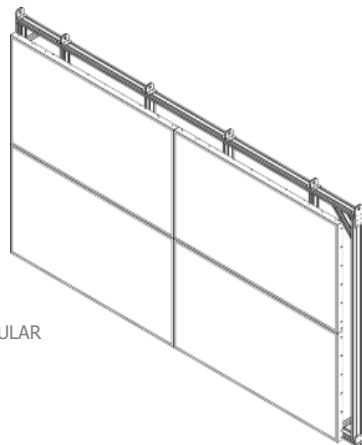
BACK VIEW



SIDE VIEW



ISOMETRIC VIEW

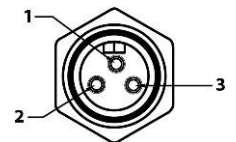


← MODULAR PC

SHIPPING CRATE



POWER ENTRY (3-Pin) 100~240VAC



- 1 GROUND
- 2 LINE
- 3 NEUTRAL

All measurements are in inches and pounds, , unless noted. Pictures and drawings are not to scale. Estimated weight may change depending on options. DYNICS Reserves the right to change, modify, upgrade, or discontinue any part of this datasheet without any prior notice.

