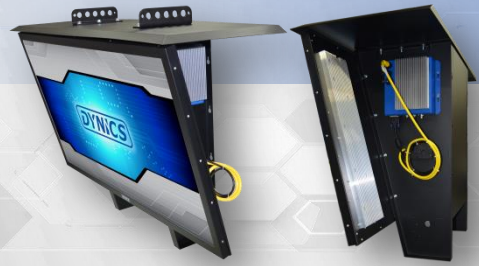


## LW



### LW | Large Industrial Display

DYNICS LW is a versatile display, designed to be a monitor or integrated with a sealed XiS PC. The LW is housed in a fan-less, drip-proof enclosure, able to operate 24/7 in environments up to 50°C/122°F ambient temperature. It is designed for overhead mounting.

- Static 15° Tilt Bracket
- Drip-Proof Sealed Hood
- Optional Soundbar
- Optional XiS PC
- 24/7 Operations
- Heavy Duty Welded Brackets for Overhead Mounting
- Reusable Wood Shipping Crate
- External IPS 200 / 550 Power Supply

#### DISPLAY SPECIFICATIONS

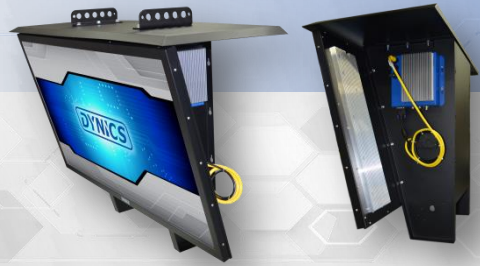
SIZE	42"	55"	75"
RESOLUTION	FHD 1920 x 1080	FHD 1920 x 1080	FHD 1920 x 1080
VIEW ANGLE	H: -89°/+89°, V: -89°/+89°	H: -89°/+89°, V: -89°/+89°	H: -89°/+89°, V: -89°/+89°
CONTRAST	4000:1	4000:1	4000:1
BRIGHTNESS	500 nits	400 nits	400 nits
ASPECT RATIO	16:9	16:9	16:9
LENS	Protective Polycarbonate Lens / 75" Laminated Glass		
LCD LIFE	50,000 Hour Backlight Half-Life		
ENCLOSURE	Standard Black Powder Coat Finish		

#### PC SPECIFICATIONS

	Mini-ITX Braswell	Skylake-U
COMPUTER I/O		
1Gb Ethernet Port	x2	x2
USB 3.0 Ports	x2	x2
DVI-D Port	x2	x2
CPU/ CPU SPEED		
	Braswell Quad Core Celeron® N3160, up to 2.24 GHz, 2MB Cache (4 cores, 4 Threads)	6th Gen Dual Core™ i5-6300U, up to 3.0 GHz, 3MB Cache (2 cores, 4 Threads) 6th Gen Quad Core™ i7-6600U, up to 3.4 GHz, 4MB Cache (2 cores, 4 Threads)
MEMORY	Up to 8GB DDR3	Up to 16GB DDR4
STORAGE	240GB – 2TB SATA SSD	
OPERATING SYSTEM	Windows® 7 Professional (64-bit)   Windows® Embedded Standard 7 (64-bit) Windows® 10 Enterprise IoT LTSC 2019 (64-bit) Windows® 10 Enterprise IoT LTSC 2016 (64-bit) Linux Ubuntu	
POWER ENTRY	100~240VAC (3-Pin)	
TEMPERATURE	Operating: 0°-50°C   32°-122°F Non-Operating: -25°-60°C   -13°-140°F	
RELATIVE HUMIDITY	Non-Condensing: 20% - 80%	
INCLUDED	Panel Mounting Bracket	
SHIPPING CRATE	WPM stamped and approved lumber for international shipping.	
COMPLIANCE	European Union Directive 2011/65/EU (RoHS)	
WARRANTY	24-Month limited warranty. Extended warranty available, contact DYNICS for more details.	



## LW



### DIMENSIONS, WEIGHT AND POWER CONSUMPTION

	42" Single Monitor	55" Single Monitor	75" Single Monitor
<b>HEIGHT</b>	32.6" (828.5mm)	33.1" (842.8mm)	49.8" (1265.3mm)
<b>WIDTH</b>	39.8" (1011.5mm)	50.6" (1287.1mm)	66.6" (1692.2mm)
<b>DEPTH</b>	16.6" (421.8mm)	19.4" (493.7mm)	25.6" (650.4mm)
<b>WEIGHT</b>	132 lbs.*	355 lbs.*	480 lbs.*
<b>POWER CONSUMPTION</b>			
Monitor Only	135 Watts**	215 Watts**	275 Watts**
Monitor 1x PC	180 Watts**	260 Watts**	320 Watts**

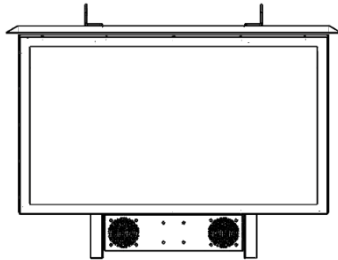
### OPTIONAL SOUNDBAR (Up To 105DB Max)



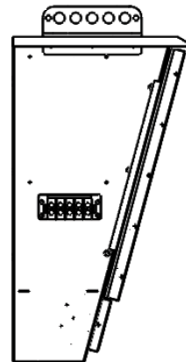
\*Weights are approximate, contact DYNICS for details.

\*\*Power Consumption based on maximum ratings, actual ratings vary significantly based on components used.

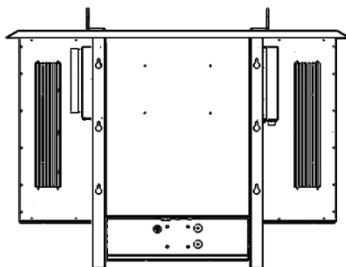
### MECHANICAL DRAWINGS (42" 55") FRONT VIEW



### SIDE VIEW



### BACK VIEW

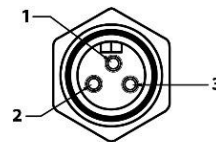


### WOODEN CRATE



### WOOD CRATE

### POWER ENTRY (3-Pin) 100~240VAC

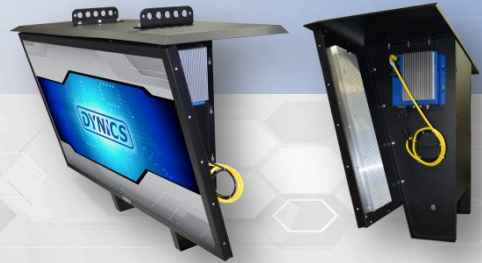


- 1 GROUND
- 2 LINE
- 3 NEUTRAL

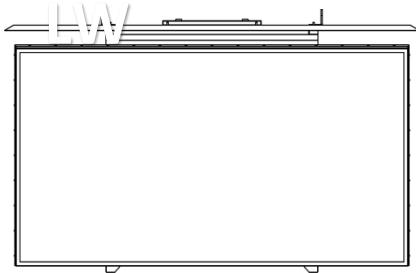
\*All measurements are in inches and pounds, , unless noted. Pictures and drawings are not to scale. Estimated weight may change depending on options. DYNICS Reserves the right to change, modify, upgrade, or discontinue any part of this datasheet without any prior notice.



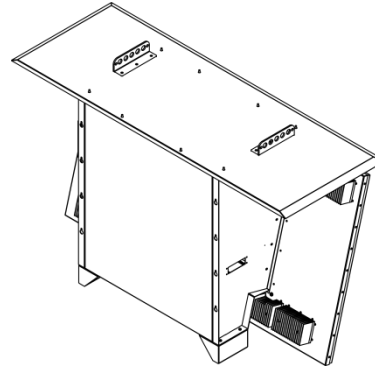
# LARGE FORMAT DIGITAL SIGNAGE



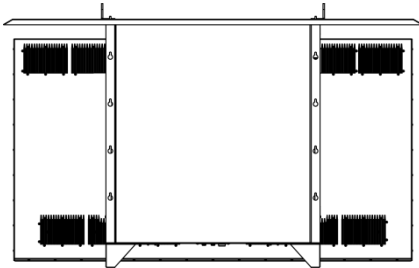
## MECHANICAL DRAWINGS (75") FRONT VIEW



## ISOMETRIC VIEW



## BACK VIEW

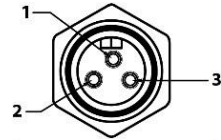


## WOODEN CRATE



## WOOD CRATE

## POWER ENTRY (3-Pin) 100~240VAC



- 1 GROUND
- 2 LINE
- 3 NEUTRAL

