



INDUSTRIAL IoT
ENTERPRISE SOLUTIONS



Product Guide

HARDWARE EDITION



SMALL FORMAT SERIES

MINI SERIES



NANO

- Fan-less (No Moving Parts)
- Aluminum Heatsink
- CPU 1.04GHz (4 Cores, 4 Threads)
- (Atom X5-E8000)
- 4GB RAM DDR3
- 120GB 2.5" SSD



MINI-S



MINI-E



MINI-D



MINI-X



MINI-M



MINI-G

- Fan-less (No Moving Parts)
- Aluminum Heatsink
- CPU Up to 2.24GHz (4 Cores, 4 Threads)
- (Braswell N3160)
- Up to 8GB RAM DDR3
- 240GB mSATA SSD (MINI-D, MINI-S, MINI-X)
- 240~480GB 2.5" SSD (MINI-E, MINI-G)
- 1x VGA, 1x HDMI, 4x Mini DP (MINI-M)
- 24VDC Power Entry
- Din Rail and Bracket Mounting Options

- Fan-less (No Moving Parts) IP50
- Aluminum Heatsink
- CPU Up to 2.5GHz (4 Cores, 4 Threads)
- (Gemini Lake J4105)
- Up to 8GB RAM DDR4
- 2.5" SSD or HDD Options
- 24VDC Power Entry
- G2 - 2x LAN Configuration
- G4 - 4x LAN Configuration
- Wi-Fi Dual Antennas Optional

DYNICS MINI series features five different minicomputers (Standard (S), Extended (E), Desktop (D), Sealed IP50 (X), Multi-Media (M), Sealed IP50 with 2x or 4x extra NICs (G), equipped with a Braswell Quad Core processor and aluminum heatsinks. Making these compact computers powerful and effective in industrial environments; suited for a multitude of production applications.

Also, the MINI series are available with a Bay Trail Dual Core processor with ACP® ThinManager enabled.



SMALL FORMAT SERIES

Xi SERIES



Xi



XiS



XiV

- Fan-less (No Moving Parts)
- Aluminum Heatsink
- 3.5" Braswell (N3160) (XiS)
- 6th Gen SkyLake-U Core i5/i7 (Xi, XiS)
- 8th Gen Mini-ITX Q370 Core i5/i7 (XiV)
- Up to 32GB RAM
- 2.5" SSD or HDD Options
- 24VDC
- IP50 Xi, XiV
- IP65 XiS
- Wi-Fi Antenna Optional

DYNICS Xi series is a compact computer built with no moving parts and equipped with an aluminum heatsink in an IP50 and IP65 sealed form factor, featuring Braswell, 6th and 8th Gen Core i5 / i7 selections.

The XiS is also available with ACP® ThinManager.



SMALL FORMAT SERIES

COMPUTER NODES



DR



BTX



BIX



PIX



GPC

- Mini-ITX Braswell (N3160) (DR, BTX, BIX, PIX)
- Mini-ITX Gemini Lake (J4105) (DR, BTX, BIX, PIX)
- Mini-ITX (Q170) (BTX, BIX, PIX, GPC)
- Mini-ITX (Q370) (BTX, BIX, PIX, GPC)
- Up to 32GB RAM
- 2.5" SSD or HDD Options
- 24VDC or 100~240VAC
- IP20 Computer Modules
- Wi-Fi Antenna Optional
- 2.5" Removable Drives (DR, BTX, GPC)
- Slim DVD RW Drive Optional (BIX, PIX)

All of our DYNICS PCs are stand alone PC, or can be paired with a DYNICS Industrial monitor. Our multiple Industrial Computer Modules are ideal for intensive industrial environments. They range from Din Rail (DR) compact and energy efficient PCs to high power, multi PCI/PCIe slots with highly configurable options and removable 2.5" SATA drives. Available with 100~240VAC or 24VDC Power Entry.



SMALL FORMAT SERIES

Performance and Functionality

A detailed list of the system's functional needs and programs will allow you to specify the necessary hardware or features. Underestimating the system requirements will leave you with an IPC that requires upgrades in the future. Overestimating the system requirements will add unnecessary cost.

Processor	Storage	Features and Peripherals	Benefits
<p>DYNICS IPCs use Intel processors varying between dual, quad and hexa-core, Intel Celeron to Intel Xeon, and 6th to 8th generations.</p> <p>The complexity of the tasks required, the programs running, the type of IPC used, and the number of connected machines and processes will all help to determine the best processor required for your project.</p>	<p>The type and degree of data storage and management required can help to determine the memory configuration. Choose from SSD, mSATA or HDD as needed, from 240GB to 12TB.</p>	<p>IPCs can be configured with a number or varying PCI slots, USB, Ethernet ports as needed, including, PCI, PCI Express (PCIe), D-Coded, X-Coded and RJ45 Ethernet ports, among others.</p> <p>Knowing which other peripherals are required, how many, and where they should be located for easy access will improve the overall performance and functionality of your new IPC.</p>	<ul style="list-style-type: none">• Sustainable• Scalable• Top Shelf Components• Custom Build Engineering or OS Images• Nimble Designs• Highly Adaptable• Revision Controlled Versions• 100% Behind Our Products• Made in America• Tariff Free



SMALL FORMAT SERIES

19" RACKMOUNTS



194A

- 4U Profile 19" Rackmount
- Secure Locking Door Mechanism
- ATX C236 Motherboard: 1x PCIe 3.0 x16, 2x PCIe 3.0 x1, 2x PCIe 3.0 x4, 2x Legacy PCI (5V) with -12V Rail, 2x USB 3.0 Ports in Front, 2x 2.5" removable
- Xeon E3-1275 v5, up to 4.0 GHz, (4 Cores, 8 Threads), 8MB Cache
- SATA Drive Trays and 3x 3.5" SATA Drive Bays.
- Up to 64GB RAM DDR4
- Up to 2x 4TB 3.5" Enterprise Grade HD SATA, or
- Up to 2x 1.92TB 2.5" Solid State Drive SATA
- Single or Redundant 100~240VAC Power Supply
- Slim DVD RW Included



194X

- 4U Profile 19" Rackmount
- Secure Locking Door Mechanism
- ATX C622 Motherboard: 2x PCIe 3.0 x16, 2x PCIe 3.0 x8, 1x PCIe 3.0 x4, 2x 10Gb Ethernet Ports, 1x Dedicated IMPI Ethernet Port, 1x COM Port, 2x USB 3.0 Ports, 2x USB 2.0 Ports, 1x VGA Port
- Xeon Silver 4114, up to 3.0 GHz, (10 Cores, 20 Threads), 13.75MB Cache
- Xeon Gold 6130, up to 3.7 GHz, (16 Cores, 32 Threads), 22MB Cache
- SATA Drive Trays and 3x 3.5" SATA Drive Bays.
- Up to 192GB RAM DDR4 ECC
- Up to 2x 4TB 3.5" Enterprise Grade HD SATA, or
- Up to 2x 1.92TB 2.5" Solid State Drive SATA
- Redundant 100~240VAC Power Supply Included
- Slim DVD RW Included



193

- 3U Profile 19" Rackmount
- Secure Locking Door Mechanism
- Mini-ITX Q370 Motherboard: 2x 1Gb Ethernet (1x Supporting Intel® vPro™ AMT), 1x RS232, 4x USB3.1, 4x USB 2.0, 2x PS/2, 1x DVI-D, 2x DisplayPort v1.2, 2x Audio Jacks (Line-out/Line-in)
- 8th Gen Hexa Core i5-8500T, up to 3.5 GHz, 9MB
- 8th Gen Hexa Core i7-8700T, up to 4.0 GHz, 12MB
- SATA Drive Trays and 3x 3.5" SATA Drive Bays.
- Up to 32GB RAM DDR4
- Up to 2x 4TB 3.5" Enterprise Grade HD SATA, or
- Up to 2x 1.92TB 2.5" Solid State Drive SATA
- Redundant 100~240VAC Power Entry Included and
- UPS35P Uninterruptable Power Supply 24VDC,
- Maintenance and Battery Free
- Slim DVD RW Included

DYNICS Industrial Rackmount Chassis are Space Saving and Powerful 2U, 3U and 4U Rackmount Solutions. All of our rackmounts include removable drive trays, metal enclosure, graphite gray, or black and blue powder coat finish. Available with single or redundant industrial power supplies 100~240VAC. Highly configurable options with 2.5" or 3.5" SSD or HDD Enterprise Grade Drives in many RAID configurations.



SMALL FORMAT SERIES

19" RACKMOUNTS



192

- 2U Profile 19" Rackmount
- Dual Xeon Server with 8 or 16 Removable 2.5" Drives Included
- E-ATX C621 Motherboard: up to 384GB DDR4 RDIMM/ECC (Contact us if more system memory is required), 4x PCIe 3.0 x16, 2x PCIe 3.0 x8, 2x 1Gb Ethernet Ports, 1x USB 3.1 Type C Port, 1x USB 3.1 Port, 4x USB 3.0 Ports, 1x VGA Port, 7.1 HD Audio
- Xeon Silver 4114, up to 3.0 GHz, (10 Cores, 20 Threads), 13.75MB
- SATA Drive Trays and 3x 3.5" SATA Drive Bays.
- 64GB Minimum and up to 384GB RAM DDR4 ECC
- 4x 960GB 2.5" Server Grade Solid-State Flash Drive SATA, In RAID-5 (2.88TB)
- 8x 960GB 2.5" Server Grade Solid-State Flash Drive SATA, In RAID-6 (5.76TB)
- 16x 960GB 2.5" Server Grade Solid-State Flash Drive SATA, 15x In RAID-6 and one hot spare (12.48TB)
- Other configurations available, contact us for more details
- Redundant 100~240VAC Power Entry Included

192 DATASHEET



DXD1

- 2U Profile 19" Rackmount
- Single Motherboard Configuration
- Single or Redundant Power Supply



DXD2

- 2U Profile 19" Rackmount
- Dual Motherboard Configuration
- Redundant Power Supply
- 4x Removable Trays for 2.5" SATA Drives
- 6th Gen Mini-ITX Q170 Core i5/i7
- 8th Gen Mini-ITX Q370 Core i5/i7
- Up to 32GB RAM DDR4
- Up to 2x 2TB 3.5" Enterprise Grade HD SATA, or
- Up to 2x 1.92TB 2.5" Solid State Drive SATA
- RAID Configurations Available
- Redundant 100~240VAC Power Supply Included

DXD DATASHEET



SMALL FORMAT SERIES

PANEL MOUNT MONITORS



FHX (4:3) - HOPE REPLACEMENT

- 12.1" | 15" | 17" | 19"
- 4:3 Aspect Ratio
- NEMA 4 (Powder Coat Finish)
- NEMA 4X (Stainless Steel Bezel)
- 100~240VAC or 24VDC Power Entry
- 5-Wire Analog Resistive Touchscreen, or
- Protective Polycarbonate Lens (Non-Touch)
- USB/Serial Output Connection
- 50,000 Hour Backlight Half-Life
- DVI and VGA Video Inputs



SHW (16:9) - HOPE REPLACEMENT

- 12.1" | 15.6" | 18.5" | 21.5" | 24"
- 16:9 Aspect Ratio (Widescreen)
- NEMA 4 (Powder Coat Finish)
- NEMA 4X (Stainless Steel Bezel)
- 100~240VAC or 24VDC Power Entry
- 5-Wire Analog Resistive Touchscreen, or
- Projective Capacitive Multi-Touchscreen, or
- Protective Polycarbonate Lens (Non-Touch)
- USB/Serial Output Connection
- 50,000 Hour Backlight Half-Life
- DVI and VGA Video Inputs

DYNICS FHX and SHW Monitors are HOPE INDUSTRIAL panel mounted price competitive replacements with a NEMA 4 / NEMA 4X rating. These monitors have an optional analog 5-wire resistive touch screen or polycarbonate lens. Available in many LCD sizes in black powder coat or stainless steel finish.

**FX & SW monitors are still available, contact us for more details.
CLASS I DIVISION II OFFERINGS COMING SOON! 2020 Q1**

FHX MONITOR
DATASHEET



SHW MONITOR
DATASHEET



SMALL FORMAT SERIES

INDUSTRIAL PANEL PCs



FX-BIX

- 10" | 12" Monitors - 4:3 Aspect Ratio
- 0 or 1 Half-Size PCI Express Slot
- 5-Wire Resistive Touchscreen Sensor Option
- Mini-ITX Braswell (N3160)
- Mini-ITX Gemini Lake (J4105)
- Mini-ITX Sky Lake (Q170)
- Mini-ITX Coffe Lake(Q370)
- Up to 32GB RAM DDR4
- Up to 2TB 2.5" Solid State Drive SATA
- 24VDC Power or 100~240VAC
- Slim DVD RW Drive Optional



FX-PIX

- 15" | 17" | 19" Monitors - 4:3 Aspect Ratio
- 0, 1, or 2 Half-Size PCI Express Slot
- 5-Wire Resistive Touchscreen Sensor Option
- Mini-ITX Braswell (N3160)
- Mini-ITX Gemini Lake (J4105)
- Mini-ITX Sky Lake (Q170)
- Mini-ITX Coffe Lake(Q370)
- Up to 32GB RAM DDR4
- Up to 2TB 2.5" Solid State Drive SATA
- 24VDC Power or 100~240VAC
- Slim DVD RW Drive Optional



SW-PIX

- 12.1" | 15.6" | 18.5" | 21.5" | 24" Monitors - 16:9 Aspect Ratio
- 0, 1, or 2 Half-Size PCI Express Slot
- 5-Wire Resistive Touchscreen Sensor Option
- Mini-ITX Braswell (N3160)
- Mini-ITX Gemini Lake (J4105)
- Mini-ITX Sky Lake (Q170)
- Mini-ITX Coffe Lake(Q370)
- Up to 32GB RAM DDR4
- Up to 2TB 2.5" Solid State Drive SATA
- 24VDC Power or 100~240VAC
- Slim DVD RW Drive Optional

Our Industrial Panel PCs are powerful feature panel mount PC systems. Available from 7" to 24" monitors in a 4:3 and 16:9 aspect ratio, with analog or projective capacitive touchscreen, selection of many low to high power motherboard/CPU's, operating systems and SSD/HDD options

Many of our models are available as ACP® ThinManager enabled.



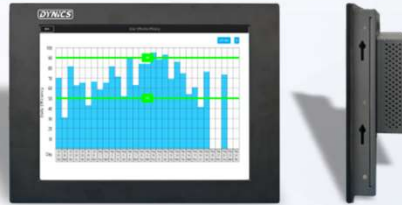
SMALL FORMAT SERIES

INDUSTRIAL PANEL PCs



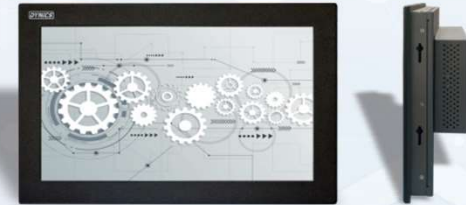
PW-BTMI

- 8" | 10" | 12" | 15" | 17" | 19" Monitors - 4:3 Aspect Ratio
- 5-Wire Resistive Touchscreen Sensor Option
- Mini-ITX Braswell (N3160)
- Available with ACP ThinManager
- Up to 8GB RAM DDR3
- 240GB mSATA SSD
- Up to 2TB 2.5" Solid State Drive SATA
- 24VDC Power or 100~240VAC
- DYNICS Standard Cutout Dimensions



PV-BTMI

- 7" | 10" | 12" | 15" Monitors - 4:3 Aspect Ratio
- Fits PanelView™ Touchscreen Replacement Enclosures
- 5-Wire Resistive Touchscreen Sensor Option
- Mini-ITX Braswell (N3160)
- Available with ACP ThinManager
- Up to 8GB RAM DDR3
- 240GB mSATA SSD
- Up to 2TB 2.5" Solid State Drive SATA
- 24VDC Power or 100~240VAC



SW-BTMI

- 7" | 12.1" | 15.6" | 18.5" | 21.5" | 24" Monitors - 16:9 Aspect Ratio
- Fits Siemens® Drop-In Replacement Enclosures
- 5-Wire Resistive Touchscreen Sensor Option
- Mini-ITX Braswell (N3160)
- Available with ACP ThinManager
- Up to 8GB RAM DDR3
- 240GB mSATA SSD
- Up to 2TB 2.5" Solid State Drive SATA
- 24VDC Power or 100~240VAC

The DYNICS PV, PW and SW BTMI are industrial PC based HMIs with SSD and fanless design, they have a powerful Quad Core Braswell 1.6GHz CPU to run most HMI software applications at a very competitive price point.



SMALL FORMAT SERIES

INDUSTRIAL INTEGRATED WORKSTATIONS



BBK

- 15.6" | 18.5" | 19" | 21.5" | 24 Monitors - 16:9 Aspect Ratio, 19" is 4:3
- Ventilated Enclosure IP20
- Max Temp 50°C
- Powder Coat Black Finish, or
- Stainless Steel Finish
- Desktop Stand Metal Available
- 5-Wire Resistive Touchscreen Sensor Option
- Mini-ITX Braswell (N3160)
- Mini-ITX Sky Lake (Q170)
- Up to 16GB RAM DDR
- Up to 2TB 2.5" Solid State Drive SATA
- 24VDC Power or 100~240VAC



HSW

- 15" | 19" | 22" | 24" 16:9 Aspect Ratio
- Sealed IP66 Workstation
- Stainless Steel 316 Grade
- Max Temp 45°C
- Overlay Analog Resistive Touchscreen
- Mini-ITX Braswell (N3160)
- 6th Gen SkyLake-U Core i5/i7
- Up to 16GB RAM
- Up to 2TB 2.5" Solid State Drive SATA
- 24VDC Power
- Mounting Bracket System With Tilt 20°
- Selection of X-Coded, D-Coded or RJ45 Ports



XY-PIX

- 15" 4:3 Aspect Ratio
- Legacy Design - Stud Mounted Drop-In Replacement
- Keypad and USB Port In Front
- Max Temp 50°C
- Powder Coat Black Finish
- Mini-ITX Braswell (N3160)
- Mini-ITX Gemini Lake (J4105)
- Mini-ITX Sky Lake (Q170)
- Mini-ITX Coffe Lake(Q370)
- Up to 32GB RAM DDR4
- Up to 2TB 2.5" Solid State Drive SATA
- 24VDC Power or 100~240VAC
- Slim DVD RW Drive Optional

The BBK is a slim industrial grade monitor integrated with a Braswell or Sky Lake high power CPU which is a great replacement for consumer grade computers in an industrial environment. The XY-PIX industrial workstation is a panel mounted drop-in replacement with keypad interface, USB front port and optional analog resistive touchscreen capability ideal for legacy solutions.

BBK
DATASHEET



XY-PIX
DATASHEET



SMALL FORMAT SERIES

INDUSTRIAL INTEGRATED WORKSTATIONS

The **EX|EW** sealed workstation is housed in a NEMA 4 rated enclosure for industrial applications with overhead or pedestal mounting capability. Multiple configurations are available to meet your industrial needs.

The customizable fanless industrial PC includes multiple storage and motherboard options in 24VDC (4-pin) or 120~240VAC (3-pin) power entry.

The **EX** is offered with 15", 17" and 19" 4:3 aspect ratio monitors.

The **EW** is offered with 18.5", 21.5" and 24" wide screen 16:9 aspect ratio monitors.

The **EXV** and **EWV** are offered with embedded 4x PoE X-Coded

The **EW24AI** and **EWV24AI** are offered with 24" & Nvidia Tesla T4 GPU graphic cards

- Fanless, No Moving Parts
- Max Temp 50°C
- Analog Resistive Touch Screen or Polycarbonate Lens
- Powder Coat RAL 7035 (NEMA 4) Finish
- Additional Network Ports Available: +2x, or 4x Extra 1Gb LAN Ports
- Mini-ITX Braswell (N3160)
- Mini-ITX Sky Lake (Q170)
- Up to 32GB RAM DDR4
- Up to 2TB 2.5" Solid State Drive SATA
- 24VDC Power, 100~240VAC, or Uninterruptable Power Supply (SC-UPS3500)
- Wall Mount with Tilt Bracket with 0° to 20° and Multiple VESA Patterns
- Select From Sealed X or D Coded, or RJ45 Connectors
- Overhead/Swingarm and Pedestal Mounting Patterns Included
- 2x Flush Mount Brackets Included
- POE Network Adapter Available



SMALL FORMAT SERIES

INDUSTRIAL INTEGRATED WORKSTATIONS



The **EX|EW** workstation is a powerful industrial solution with a 4:3 or 16:9 widescreen monitor, high power PC configuration and a sealed enclosure NEMA4 / IP65 with multiple mounting options. Maximum temperature of 50°C / 122°F and it is highly customizable.



Optional Fence Mounting brackets are available, with folding tray enclosure mounted directly underneath the **EX|EW** workstation with 3x USB 3.0 ports



Compatible with the DYNICS VertiStand
(See Page 18 for more details)
as the **EX|EW** are equipped with Pedestal Mount
(Bottom) and Overhead Mount (Top) patterns.

DYNICS

SMALL FORMAT SERIES

VERTISTAND

The DYNICS **VertiStand** is an industrial station built to centralize the needs of computer operations anywhere throughout a plant while maintaining space integrity and accessibility.

Features that make this possible are the **VertiStand's** mobility in the swinging arm to various degrees, allowing the user to rotate and operate the computer system from various positions.

Optional keyboard tray attached to bottom of monitor and optional printer tray at the base of the unit, with cables managed to one location. **VertiStand's** base is forklift ready for easy maneuverability and multiple location options, it is made of extruded aluminum construction, 14 Gauge steel components, powder coat finish for longer durability, it is forklift ready and available with swing arm, stand and tray

The standard size is 78"H x 26"W x 32"D and it offers customizable options.



**INDUSTRIAL GRADE. FLEXIBLE.
HIGH QUALITY. AMERICAN MADE.**



DYNICS

SMALL FORMAT SERIES



SC-US3500 Power Supply
Super Cap Uninterruptible



PT-PoE Device



The VertiStand is a highly customizable industrial station.

It can accommodate custom trays and control plates for keyboard, printer, power supplies, switches, etc. Our DYNICS EX|EW or HX|HW workstations are easily mounted with metal brackets provided in each configuration. The VertiStand has swing-arm or control panel options customized to meet your specific industrial requirements.

The SC-US3500 UPS is designed to protect and back up sensitive electronic equipment. Maintenance and battery free, with a 10 year life span, uninterruptible power supply and an automatic switch over.

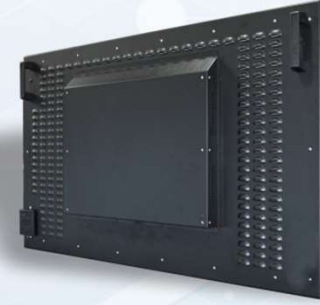
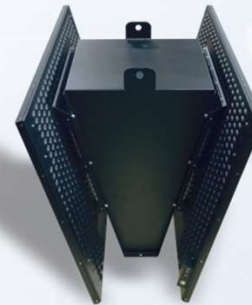
The PT-PoE device is designed to add power over Ethernet to new or existing networks. Their IP65 rating makes them perfect for industrial applications. It includes 4x M12 X or D-Coded outputs, power delivery up to 30W per port, data speeds up to 1Gb and LED indicators.



DYNICS

LARGE FORMAT SERIES

ANDON SOLUTIONS



CW (16:9)

- 32" | 42" | 55" | 75" 16:9 Aspect Ratio
- 24/7 Continued Operation
- Max Temp 50°C | IP20
- Protective Polycarbonate Lens Available
- Black Powder Coat Finish (Standard), Other Colors Available
- Mini-ITX Braswell (N3160)
- Mini-ITX (H1100)
- Up to 32GB RAM DDR4
- Up to 2TB 2.5" Solid State Drive SATA
- 100~240VAC Power Entry
- Optional Integrated Speakers or WiFi 2.4/5GHz

The enclosure is made of rugged steel with standard black powder coat finish aimed to provide far superior reliability and quality. Other custom colors available, call us for more details.

All of the screens shown in this catalog have been designed with our **ProViewDS** digital signage software, to learn more visit www.dynics.com/proviewds



DYNICS CW ANDON is a great alternative to consumer grade TVs as it comes in a metal enclosure with an industrial 24/7 grade display and integrated computer configurations.

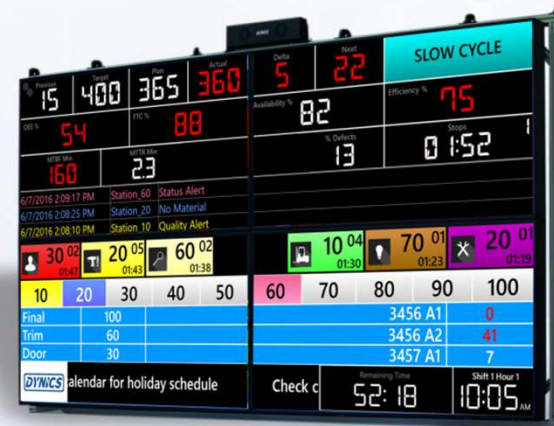
It can be mounted to a wall, ceiling or column with a selection of metal brackets with universal VESA pattern mounts.

The CW is configurable as a single or double-sided unit with or without an integrated PC.



LARGE FORMAT SERIES

ANDON SOLUTIONS



VW - VIDEO WALL 2X1 | 2X2

- 75" 16:9 Aspect Ratio
- External Modular IPC
- External IPS550 Power Supply (IP65)
- Mini-ITX Sky Lake (Q170)
- Up to 32GB RAM DDR4
- Up to 2TB 2.5" Solid State Drive SATA
- 100~240VAC
- Auto Temp Control
- Plug and Play
- Soundbar Ready
- 24/7 Operation



DYNICS VW75 is an easy to configure all-in-one system with multiple display capabilities. The VW75 is capable of displaying a single image over all 2/4 displays or 2/4 independent images at once. This plug and play system is ideal for creative and dynamic digital signage, information relay, command and control operations, and more.



LARGE FORMAT SERIES

ANDON SOLUTIONS



LW - SINGLE & BACK-TO-BACK

- 42" | 55" | 75" 16:9 Aspect Ratio
- External IPC (XIS - IP65)
- External IPS200 / IPS550 Power Supply (IP65)
- Mini-ITX Braswell (N3160)
- Mini-ITX Sky Lake (Q170)
- Up to 32GB RAM DDR4
- Up to 2TB 2.5" Solid State Drive SATA
- 100~240VAC
- Static 15° Tilt Bracket
- Drip-Proof Hood
- Soundbar Ready



DYNICS LW is a versatile display, designed to be a monitor or integrated with a sealed XiS PC.

The LW is housed in a fan-less, drip-proof enclosure, able to operate 24/7 in environments up to 50°C/122°F ambient temperature. It is designed for overhead mounting as a single or back-to-back configuration, with 1 or 2 XiS PC(s) for independent video showing on each side.



LARGE FORMAT SERIES

Environment and Hazards

In general, a more powerful ANDON system tends to be more sensitive to harsh environments, but the proper protective measures will keep your system working properly. Consider the following to make sure your new ANDON solution can hold up to...

Heat	Dust	Vibration and Shock	Moisture	Dust
All computers generate heat as they operate, and this is specially true for high performance machines or those that operate continuously. DYNICS ANDON LW products offer protection up to 50°C or 122°F ambient temperature.	Some levels of dust are unavoidable, but IPCs near processes that actively generate dust will need to be sealed to IP65 standards. We offer a great selection of products for roughed conditions. Our XIS PC is rated IP65.	Surrounding processes and machines often generate vibration and shock can, quickly or over a period of time, wear down the ANDON prematurely, or cause it fail. DYNICS units will withstand up to 10G (operating) and 15G (non-operating), and vibration 1.0G from 57~2000Hz (operating) and 2.5G from 57~2000Hz (non-operating).	Excess moisture, whether from high humidity, steam, mist, or another source, can quickly damage the ANDON System. The appropriate enclosure and IP rating will ensure your IPC is protected. Keep in mind that the type and level of moisture will make a difference.	ANDON can be protected from corrosive or otherwise damaging chemicals with the right consideration. If these are not taken into account, it can wear down the enclosure and damage the seal, or wear down the IPC itself. We offer optional Conformal Coating protection in all of our products, call us for more details.

LARGE FORMAT SERIES

ANDON SOLUTIONS



UW37 (16:9)

- 37" 16:9 Aspect Ratio
- 24/7 Continued Operation
- Max Temp 50°C | IP55
- Protective Polycarbonate Lens Available
- Black Powder Coat Finish (Standard), Other Colors Available
- Mini-ITX Braswell (N3160)
- Up to 8GB RAM DDR3
- Up to 2TB 2.5" Solid State Drive SATA
- 100~240VAC Power Entry
- Optional Soundbar with Max Output of 105dB
- WiFi 2.4/5GHz Wireless 802.11 a/g/n
- Double Sided Unit comes with Back-To Back Bracket.
- Drip Proof Hood & Welded Hangers For Ceiling Mount



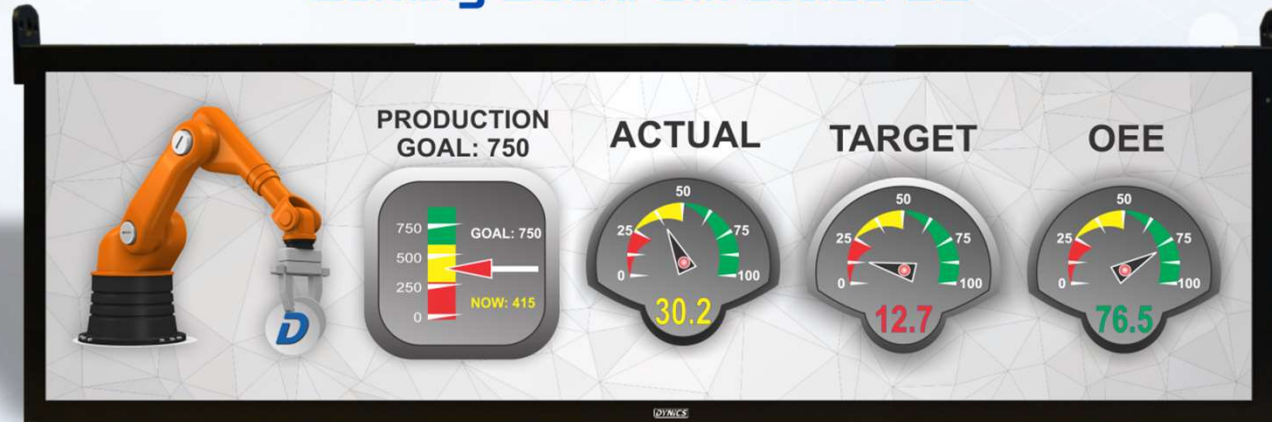
The Ultra Wide 37" (diagonally) is a perfect solution to replace old LED "bingo boards" which are limited to a certain number of digits per row and a few colors. The UW37 runs with Windows OS so there is no limitation to font sizes, colors or graphics. It is available with an integrated Braswell configuration as a single or double sided unit with optional Wi-Fi and high power Soundbars.



LARGE FORMAT SERIES

ANDON SOLUTIONS

Coming Soon! UltraWide 88"



UW88 (32:9)

- 88" 3840x1080 Pixel Resolution
- 24/7 Continued Operation
- Protective Laminated Glass Available
- Black Powder Coat Finish (Standard), Other Colors Available
- Mini-ITX Braswell (N3160)
- Up to 8GB RAM DDR3
- Up to 2TB 2.5" Solid State Drive SATA
- 100~240VAC Power Entry
- Optional Soundbar with Max Output of 105dB
- WiFi 2.4/5GHz Wireless 802.11 a/g/n
- Double Sided Unit comes with Back-To Back Bracket,
- Drip Proof Hood & Welded Hangers For Ceiling Mount

Stay tuned for our newer UltraWide 88" (diagonal) display.

The UW88 is a new signage format widescreen 32:9 aspect ratio plus Ultra HD half 4K resolutions.

Sleek design for space, ready to install from ceiling with heavy duty metal welded hangers, optional Wi-Fi capability and SoundBar ready. Available early 2020!

LARGE FORMAT SERIES

INTERACTIVE SOLUTIONS



PWS -PORTABLE WORK STATION

- 55" | 75" 16:9 Aspect Ratio
- Display Only or Integrated PC Options
- Infrared 20 Points of Touch Simultaneously
- Mini-ITX Sky Lake (Q170)
- Up to 32GB RAM DDR4
- Up to 2TB 2.5" Solid State Drive SATA
- 100~240VAC
- Light Weight and Durable Cart
- Multiple Peripheral Options
- Speakers Optional
- Rapid Response Video Controller



The PWS Portable Workstation is our answer to an increasing need to bring interactive processes to more locations and multiple audiences. It combines dynamic touch screen functionality with large 55" and 75" displays and integrated computers in an all-in-one package. Available with Wi-Fi, speakers in a durable, and light-weight extruded aluminum structure. The PWS is plug and play!



LARGE FORMAT SERIES

INTERACTIVE SOLUTIONS



Power Button and
Easy Access USB Port

AW - MULTI-TOUCH SOLUTION

- 32" | 42" | 55" | 75" 16:9 Aspect Ratio
- Display Only or Integrated PC Options
- Infrared 20 Points of Touch Simultaneously
- Mini-ITX Sky Lake (Q170)
- Up to 32GB RAM DDR4
- Up to 2TB 2.5" Solid State Drive SATA
- 100~240VAC
- Multiple Enclosure Options
- Multiple Peripheral Options
- Speakers Optional
- Highly Customizable, Call For Details

Multiple Mounting Options



DYNICS AW is a complete line of interactive displays that can easily be wall, table, or stand mounted. Designed with infrared; up to 20-points of touch, the infrared sensor technology can be combined with an optional integrated PC to create a flexible system that can be built to fit any consumer needs.

Highly customizable options, please call us for more details.



AW
DATASHEET



DYNICS Global Presence





DYNICS

Industrial Enterprise Solutions

Our products are proudly MADE IN AMERICA.

Established in 1997 DYNICS we have over 30 years of creating high quality industrial hardware solutions for the marketplace by designing, building, and servicing PC solutions from our headquarters in Ann Arbor, Michigan.

620 Technology Drive | Ann Arbor, MI 48108

Ph. 734.677.6100

Fax 734.677.6105

Email: sales@dynics.com

Web: www.dynics.com