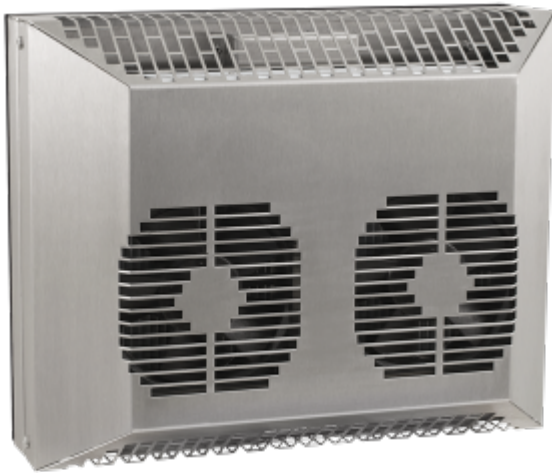


Thermoelectric cooler TG 6105-230V Recessed



Product Features

Brand Name:	SoliTherm Peltier
Order Number:	6105303
Housing Material:	Stainless steel AISI 304 (V2A)
Ingress protection:	IP 66, Type 4X
Note:	The torque for the mounting nuts should be 4.5 Nm.
Approvals:	CE, RoHS, cURus

Accessories:



Condensate Kit



Wall Mounting Kit

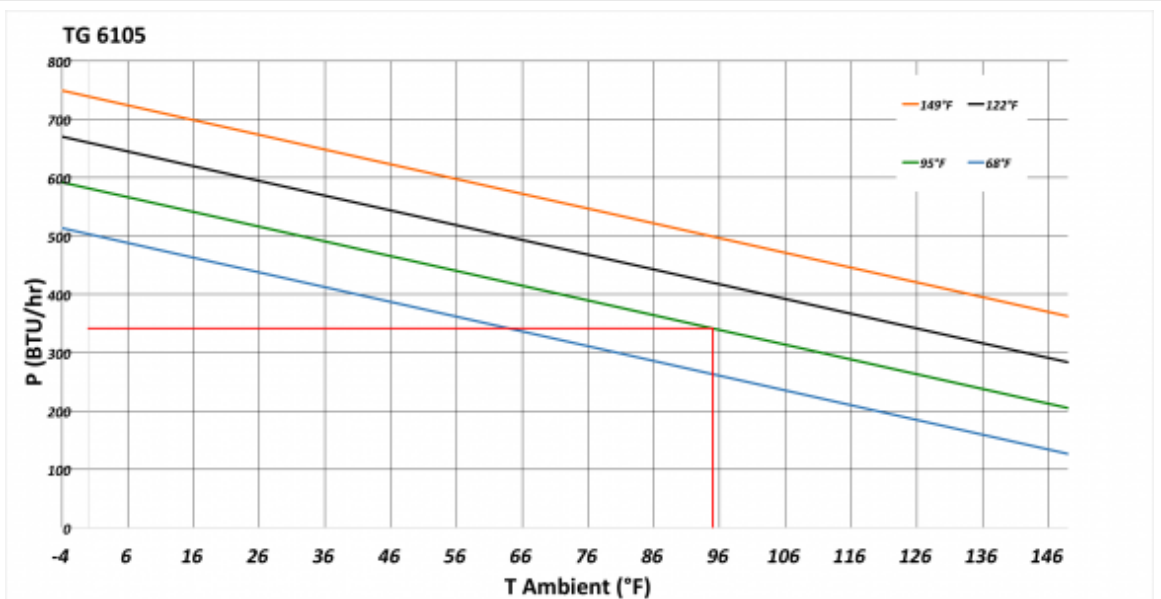
Taric Code:	84158300
--------------------	----------

Technical data TG 6105-230V Recessed

Cooling capacity 95F/95F:	340 BTU
Temperature range:	-4°F - 149°F
Air volume flow (system / unimpeded):	Ambient air circuit: 75 / 125 cfm Cabinet air circuit: 27 / 53 cfm
Mounting:	Recessed
Dimension H x W x D:	11 x 13.8 x 6.5 inch
Weight:	21 lbs.
Cut out dimensions:	13.8 x 11 inch
Voltage / Frequency:	120 - 230 V ~ 50/60 Hz
Current 95F95F:	1.1 A @ 120 V 0.5 A @ 230 V
Starting current:	1.6 A @ 120 V 0.8 A @ 230 V
Max. current:	1.1 A @ 120 V 0.6 A @ 230 V
Nominal power 95F95F:	126 W
Max. power:	131 W
Fuse:	2 A (T) @ 120 V 1 A (T) @ 230 V
Connection:	8-Pole Connector

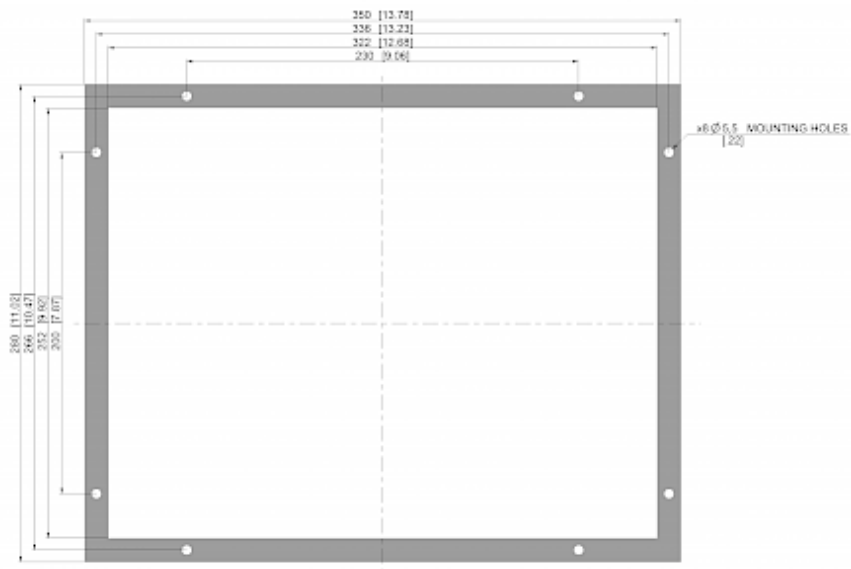
Please click on the graphics to download.
 More CAD drawings can be found under [Product Download](#).
 > [Overview product group Thermoelectric coolers](#)

Performance Graph:



click image to enlarge

Cut out dimensions:



click image to enlarge