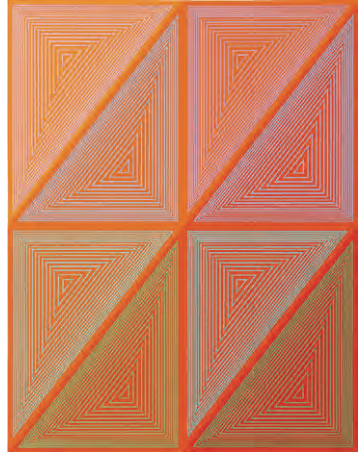


DAVIDSON GALLERIES

FALL 2014 CATALOG
Original Antique, Modern & Contemporary
Works on Paper



1. Peggy BROOK BACON (American, 1895–1987) *Post Office*. Graphite. Backed for strength, some losses at edges of sheet. Approx. 10 x 12 inches. [43402c] \$800.



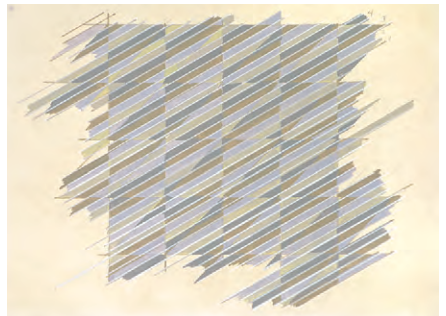
2. Richard ANUSZKIEWICZ (American, b. 1930) *Plate B*. From *The Inward Eye Portfolio* (in response to the William Blake text). Color serigraph, 1970-71. Edition 100. Signed lower right. Printed by Domburger KG, Stuttgart. Published by Aquarius Press, Baltimore, MD. 23-3/4 x 19-5/8 inches. [45281c] \$500.



4. John TAYLOR ARMS (American, 1887–1953) *A Devil of Notre Dame*. #13 from *Gargoyle Series*. Etching, 1929. Edition Annotated personal proof. Signed. Reference: Fletcher 222. 8 x 5-1/2 inches. [43869c] \$1,500.



3. Virginia BANKS (American, 1920-1985) *Untitled*. Collage, 1955. 7 x 5 inches. [13745] \$550.



5. Garo ANTREASIAN (American, b. 1922) *Maquette For Planned Image*. Tempera and colored pencil on board. Signed verso. 5-1/2 x 7-1/2 inches. [45144c] \$325.



6. Lou BARLOW (American, 1908–1992) *Sancho Panza*. Wood engraving, 1935. Edition WPA. [43200c] \$500.



9. Leonard BASKIN (American, 1922–2000) *The Ascension For Flaubert's St. Julien The Hospitalier*. Wood Engraving, 1957. Signed. Reference: Fern 303. 6 x 1-7/8 inches. [45114c] \$325.



7. Lou BARLOW (American, 1908–1992) *Street Scene*. Wood engraving, 1984. Edition 1/40. Signed. 5 x 7 inches. [45348c] \$650.



8. Lou BARLOW (American, 1908–1992) *The Joggers*. Wood engraving, 1984. Edition 5/50. Signed. 5 x 7 inches. [45349c] \$650.



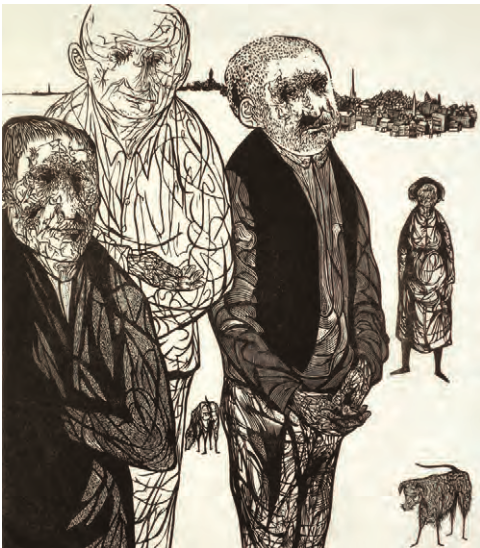
10. Lou BARLOW (American, 1908–1992) *Neighborhood Meeting*. Wood engraving, 1985. Edition 4/50. Signed. 7-7/8 x 9-7/8 inches. [43205c] \$850.



11. Leonard BASKIN (American, 1922–2000) *Andrea Mantegna, Italian 1431-1506*. From Etchings of Ten Favorite Artists. Etching, 1962. Edition 1/50. Signed. Published by Herman D. Schickman, Delphic Arts, New York. Reference: Fern 431. 17-3/4 x 14-3/4 inches. [45230c] \$1,200.



12. Leonard BASKIN (American, 1922–2000) *Love me, love my dog*. Wood engraving, 1958. Signed. Reference: Fern 353. 7 x 6 inches. [45227c] \$800.



13. Leonard BASKIN (American, 1922–2000) *View of Worcester/View in Worcester*. Wood engraving, 1953. Edition 20. Signed. Reference: Fern 240. 9-7/8 x 8-1/2 inches. [45216c] \$1,000.



14. Leonard BASKIN (American, 1922–2000) *Dog in the Meadow*. Etching, 1964. Edition 3/100. Signed. Reference: Fern 464. 15 x 8-5/8 inches. [45231c] \$1,200.



15. Leonard BASKIN (American, 1922–2000) *Saint Anthony with Red Monster*. Woodcut, 1952. Signed. Reference: Fern 192. 3-1/4 x 7-1/2 inches. [45214c] \$450.



16. Leonard BASKIN (American, 1922–2000) *Stag For Flaubert's St. Julien's The Hospitaller*. Wood engraving, 1957. Signed. Reference: Fern 306. 3-1/4 x 3 inches. [45225c] \$400.



17. Leonard BASKIN (American, 1922–2000) *Leonard Baskin: Self Portrait at 44*. Etching, 1966. Edition 10/100. Signed. Reference: Fern 493. 6 x 7 inches. [45233c] \$500.



18. Leonard BASKIN (American, 1922–2000) *Hercules Seghers, Dutch 1585-1645*. From *Etchings of Ten Favorite Artists*. Etching, 1963. Edition 18/50. Signed. Published by Herman D. Schickman, Delphic Arts, New York. Reference: Fern 432. 17-3/4 x 14-1/2 inches. [45085c] \$750.



19. Leonard BASKIN (American, 1922–2000) *Leonard Baskin AET 42*. Two-color woodcut, 1962. Edition AP. Signed. Reference: Fern 420. 32 x 23-1/2 inches. [45115c] \$750.



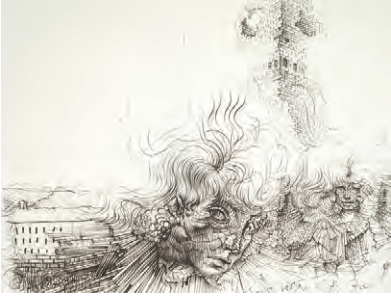
20. Thomas HART BENTON (American, 1889–1975) *A Drink of Water*. Lithograph, 1937. Edition 250. Signed. Published by Associated American Artists. Reference: Fath 15. 10 x 14-1/4 inches. Trace of tape residue at very outer edge of bottom margin. [45180c] \$2,800.



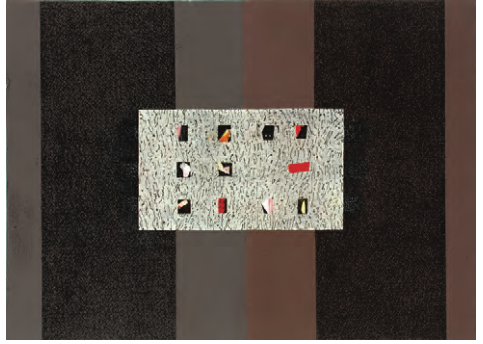
21. Leonard BASKIN (American, 1922–2000) *Owl*. Wood Block and Impression. 1963. Reference: Fern 453. Block: 16-1/4 x 13-1/8 inches. Impression: 16-1/4 x 13-1/4 inches. [45263c] \$5,500.



22. Leonard BASKIN (American, 1922–2000) *Self Portrait*, 1951. Bertolt Brecht, 1952 (verso). Double Sided Woodblock. Reference: Fern 137 & 145. 20-3/4 x 18 inches. Block was split and was repaired by the artist. [45262c] \$8,500.



23. Hans BELLMER (German, 1902–1975) *Les Mille en Feu*. Lithograph, c. 1970. 17 x 22-3/4 inches. [43952] \$350.



24. Marlene BAUER (American, b. 1950) *Harper*, 2014. Acrylic, ink on paper. Signed. 11 x 15 inches. \$1,600 framed.



25. Carl BEETZ (American, 1911–1974) *Prize Fighter*. Lithograph, c. 1940. Signed. 14-3/4 x 10-1/4 inches. Foxing at extreme outer edge. [43578c] \$150.



26. Michael BIDDLE (American, b. 1934) *Cheetah*. Etching, 1966. Edition 191/250. Signed. Published by Associated American Artists. c. 10 x 12 inches. [43810c] \$150.



27. Hans BELLMER (German, 1902–1975) *Les Bas Reyes*. From *An American Portrait, 1776-1976*. Color lithograph, 1974. Edition 22/175. Signed. Published by Transworld Art, New York. 17-3/4 x 18-1/8 inches. Transworld Art blindstamp bottom left corner of margin. Toned, traces of foxing. [45178] \$600.



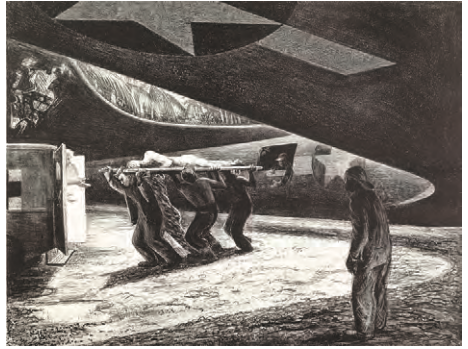
28. Hans BELLMER (German, 1902–1975) *Etreintes*. Color lithograph, 1974. Edition 122/150. Signed. Published by Transworld Art, New York. 20 x 17-5/8 inches. Transworld Art blindstamp bottom left corner of margin. [45177] \$685.



29. Bernard BRUSSEL-SMITH (American, 1914–1989) *Sailor & His Girl*. Wood engraving, 1941. Edition 14/35. 6 x 4 inches. [43526c] \$375.



30. Franklin BOGGS (American, 1914–2009) *Night Evacuation*. Lithograph, 1944. 9-3/4 x 12-7/8 inches. Toning in mat window. [43611c] \$500.



31. Franklin BOGGS (American, 1914–2009) *Back from Wewak*. Lithograph, 1944. 9-3/4 x 12-3/4 inches. [43605c] \$325.



32. Henry BILL (185–1857) *Bird's Eye View of San Francisco*. From *History of the World* by Samuel Maunder. Hand-tinted lithograph, 1856. Published by Henry Bill, New York. 7-5/8 x 15-5/8 inches. Usual folds, fold reinforced verso. [45185c] \$950.



33. Isabel BISHOP
(American, 1902–1989) *Two Girls Outdoors*
(alternatively titled *Helping with the Veil*).
Etching. Date of plate 1953. Date of Impression 1981. Edition 45/50.
Interlocking “S” Chop. Published by Associated American Artists.
Reference:
Teller 49. 7-1/4 x 5 inches. [43553c] \$400.



34. Douglas BOSLEY LD:4334.0003. 2014.
Mezzotint. Edition of 10. Signed. 20 x 12 inches. \$500.



35. Aaron BOHRD (American, 1907–1992) *New Orleans Street*. Lithograph. 1939. Edition 250. Signed. 9 x 11-7/8 inches. Light toning. [43436c] \$285.



36. Gerald LESLIE BROCKHURST
(British, 1890–1978) *Macnamara*. Etching. 1920. Signed in the plate. 5 x 3-7/8 inches. [43410c] \$225.



37. Gerald LESLIE BROCKHURST
(British, 1890–1978) *Une Dacquoise*. Etching. 1922. Signed in pencil, signed in the plate. 6-3/8 x 4-3/8 inches. [45272c] \$350.



38. Julius BLOCH (German/American 1888-1966) *Nectarines & Pear*. Oil on board. Signed verso. 7 3/4 x 8 3/4 inches. [13743] \$1,200.



39. Fay CHONG (Chinese/American (Northwest), 1912–1973) *Self Portrait*. Woodblock. 1935. Signed. Also initialed in the block. 10 x 8 inches. [43801c] \$400.



41. Bernard BUFFET (French, 1928–1999) *Saint-Germain-des-Près-Paris*. Color lithograph, 1965. Edition 89/150. Signed. Reference: Sorlier 65. 25-5/8 x 19-1/4 inches. [45112c] \$1,250.



40. George ELBERT BURR (American, 1859–1939) *Evening in the Painted Desert-Arizona*. Drypoint. Signed. 4-7/8 x 6-15/16 inches. [31905c] \$600.



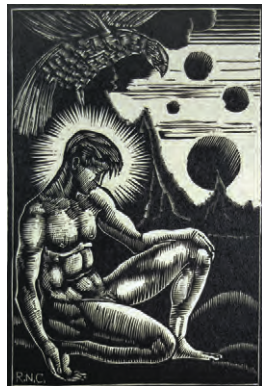
42. Edgar CHAHINE (French, 1874–1947) *El be naso-Vonise*. Drypoint, 1922. Edition 27/100. Signed. Reference: Tabanelli 349. 8-5/8 x 12-1/2 inches. [43868c] \$425.



43. Sidney CHEFETZ (Born, 1922) *Last Leaf*. Etching and aquatint, 1966. Edition 207/250. Signed. Published by Associated American Artists. 12-3/8 x 7-1/2 inches. [43808c] \$200.



44. John EDWARD COSTIGAN (American, 1888–1972) *Jackie*. Etching, 1939. Published by Associated American Artists. 11 x 9 inches. [43564c] \$450.



45. Ralph NICHOLAS CHUBB (English, 1892–1960) *Songs of Mankind*. Wood engraving, 1930. Edition Stamped: “rejected proof”. Signed, titled, dated in pencil. 5 x 3-3/8 inches. [43460c] \$150.



46. Marc CHAGALL (Russian/French, 1887–1985) *Le Soleil Jaune (The Yellow Sun)*. Color lithograph on Arches, December 1968. Edition 20/75. Signed. Published by Maeght Editeur. Reference: Mourlot 556. 16 x 19-1/2 inches. Faint discoloration in margins, especially bottom edge. [45474c] \$8,500.



47. Gordon COOK (American, 1927–1985) *Nude*. Etching. Edition 3/15. Signed. 4-3/4 x 6-7/8 inches. [43500c] \$100.



48. Gordon COOK (American, 1927–1985) *Nude*. Etching. Edition 3/15. Signed. 6-1/2 x 6-7/8 inches. [43499c] \$125.



49. Jose LUIS CUEVAS (Mexican, b. 1934) *Death of a Prostitute*, May 2nd 1968. Lithograph, 1968. Edition 5/11. Signed. 22 x 30 inches. [45192c] \$825.



50. Max ARTHUR COHN (American, 1903–1998) *Beach Scene*. Color serigraph. Signature in plate. 12 x 17-1/2 inches. [43554c] \$325.



51. Gordon COOK (American, 1927–1985) *Nude*. Etching. Edition 1/15. Signed. 3-1/8 x 3-7/8 inches. [43501c] \$85.

52. Hermine DAVID (French, 1886–1971)
Match La Boxe. Drypoint, c. 1920. Edition
 47/55. Signed. Published by Jacquart, Paris
 (Blindstamp). 8 x 9-3/8 inches. [43584c] \$400.



53. Nelson DAWSON (British, 1859–
 1941) *Fish Market, Venice*. Soft ground
 etching, c. 1920. Signed. 6-7/8 x 10-1/4
 inches. Isolated foxing. [43535c] \$125.



We invite you to attend the 2nd Annual PORTLAND FINE PRINT FAIR at the Portland Art Museum January 30-February 1, 2015. Thousands of etchings, woodcuts, lithographs and screenprints dating from 1500 to the present will be available for purchase from 19 important galleries in North American and Japan. It is an exciting opportunity for both the novice and expert collector to peruse and purchase original museum-quality prints!

FREE ADMISSION • www.portlandfineprintfair.com

**PORTLAND
 FINE
 PRINT
 FAIR
 OREGON**



54. Henry SHEPPARD DALE
 (1852–1921) *The Pizzaretta
 with Church of St. Marco
 & Column of St. Theodore*.
 Drypoint. 5-3/4 x 3-3/4 inches.
 Mottled paper. [43479c] \$100.

55. Jean DUBUFFET (French,
 1901–1985) *Mur de Crépit*. From
Les Mura. Lithograph, 1945. Edition
 75/160; numbered in pencil. Printed
 by Mourlot, Paris. Reference: Webel
 67. 13-7/8 x 11 inches. [43805] \$1,600.





56. Eugene DYCZKOWSKI (American, 1899–1987)
Running Crowd. Graphite drawing. Stamped estate signature lower right. 19 x 25 inches. Traces of foxing top and right side. [45176c] \$500.



57. Giovanni B. DE ROSSI (Italian, 1822–1894) *Plate LXVI: Le Vatican et L'Eglise de S. Pierre à Rome*. Etching. Published by Pierre Mortier, Amsterdam, 18-1/8 x 25 inches. [43761c] \$650.



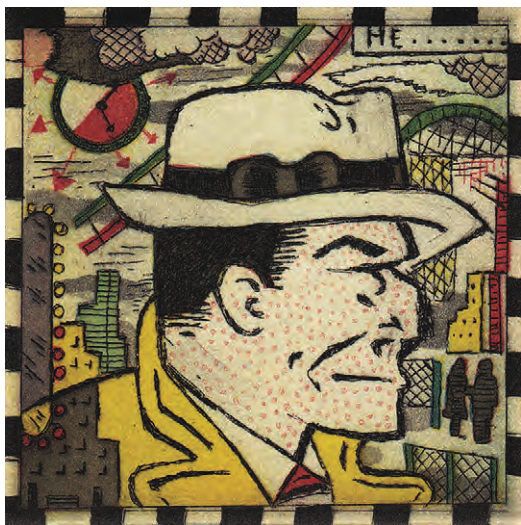
58. Raphael DROUART (French, 1884–1972) *Narcisse*. Monotype on laid Japan paper. Signed. 9-3/4 x 5-1/2 inches. 2 small holes repaired. [43455c] \$400.



59. Raphael DROUART (French, 1884–1972) *Narcisse*. Monotype. Edition Unique. Signed(?). 9-1/4 x 6-1/2 inches. [43482c] \$400.



60. Raphael DROUART (French, 1884–1972) *Narcisse*. Wood engraving, c. 1920. Signed. Edition 4/50. 10-3/4 x 7-1/4 inches. [43451c] \$400.



61. Tony FITZPATRICK (American, b. 1958) *Tracy, of Chicago*, 2011. Color Etching. Edition of 45. Signed. 3 x 3 inches. \$700.

62. André FRANCOIS (Hungarian / French, 1915–2005) *Bon A Tիրer, Atelier Visat*. Color lithograph, 1971. Edition 3/150. Signed. Reference: Forney 210. 26-3/4 x 20-1/8 inches. [43806] \$250.



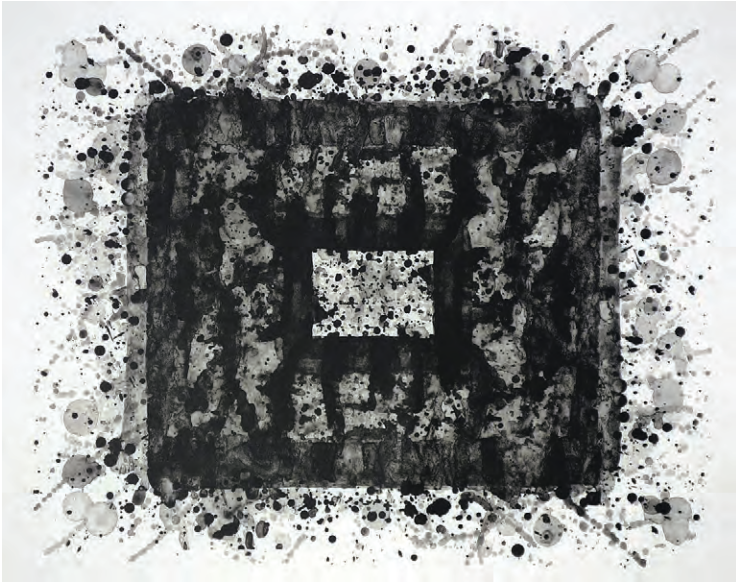
64. Tony FITZPATRICK (American, b. 1958) *I*. 2012. Color etching. Edition of 45. Signed. 7 x 5 inches. \$1200.



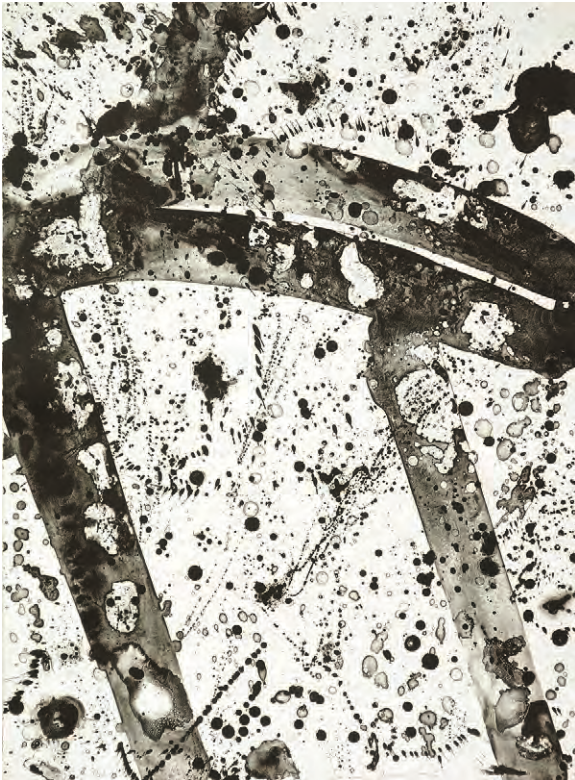
63. Kerr EBY (American, 1890–1946) *August Morning*. Etching, 1930. Edition 90. Signed. 10-1/8 x 7-5/8 inches. [43518c] \$275.



65. Don FREEMAN (American, 1908–1978) *The Queen and the Stagehand*. Depicts the rehearsal of *Mary of Scotland*, a drama by Maxwell Anderson. Lithograph, 1933. Edition 35 or fewer. Stamped signature. Signed in the stone. Reference: McCulloch 76. 6-1/2 x 9 inches. [43519c] \$185.



66. Sam FRANCIS
(American, 1923–1994) *Untitled*.
Lithograph on Rives BFK,
1974–76. Edition
30. Signed.
Published by The
Litho Shop Inc.,
Santa Monica,
CA. Reference:
Lembark 202,
Francis 210.
22 x 30 inches.
[45197c] \$1,200.



68. Sam FRANCIS (American, 1923–1994) *Opened*. Lithograph on Rives BFK,
1973. Edition 4/21. Signed. Published by The Litho Shop Inc., Santa Monica, CA.
Reference: Lembark 158, Francis 140A. 36 x 26-1/2 inches. [45204c] \$4,500.



67. Don FREEMAN
(American, 1908–1978) *Harry Wickey (My Teacher)*. Etching,
1932. Edition of only 7 proofs.
Signature stamp. Signed in
the plate. Annotated "to Marie
Wickey" at bottom of plate.
Reference: McCulloch 62.
5-3/8 x 4 inches. Small marginal
loss upper right well away from
image; pinholes for drying in 4
corners. [43521c] \$250.



69. Edwin FULWIDER (American, 1913–2003)
West Portal. Lithograph, 1940's. Edition 10.
Signed. Reference: McIntyre 35. 8-1/2 x 16-3/4
inches. [43514c] \$300.



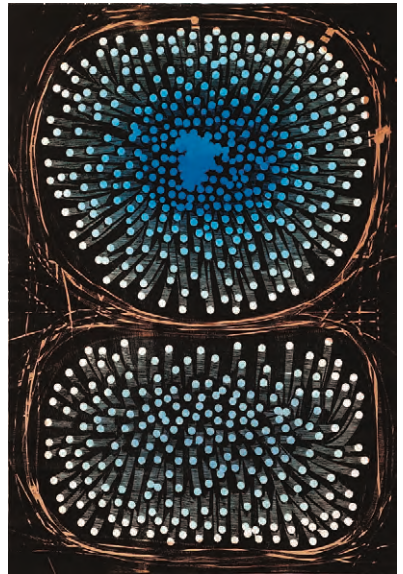
71. Joseph GOLDBERG (Born. 1947) *Untitled*.
Monotype, 1974. Signed. 11 x 13 inches.
[45147c] \$1,100.



70. Gordon GILKEY (American, 1913–2000)
Camouflage of Jüterbog. Etching and aquatint,
1953. Signed. 14-3/4 x 12 inches. Minor
spotting in margins. [43376c] \$375.



72. Gregory GRENON (American, b. 1948)
Woman #2. Lithograph, 1976. Edition 3/25. Signed.
30-1/2 x 22-1/2 inches. [45045c] \$450.



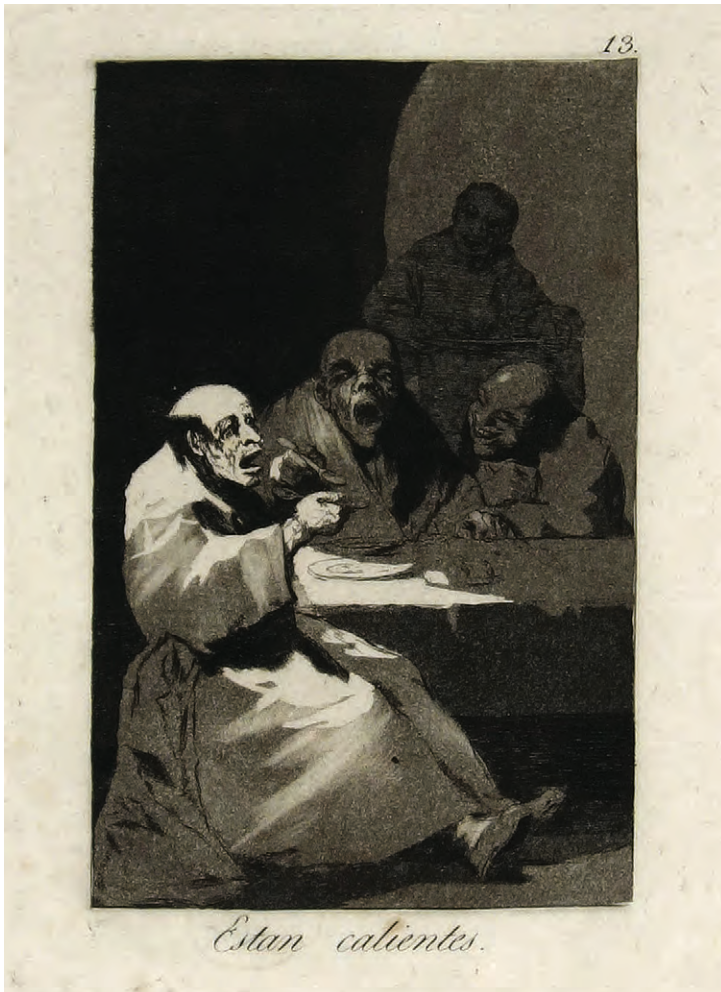
73. Fumiaki FUKITA (Japanese, b. 1926)
A Crowd. Color woodblock, 1964. Edition
8/50. Signed. 35-5/8 x 24-1/4 inches. Minor
tape residue in places along bottom edge of
margin. [45284c] \$500.



74. Karinna GOMEZ (American, b. 1987)
Power Substation, 2013. Mezzotint. TP. Signed.
 9-1/4 x 11-1/4 inches. \$200.



75. Karinna GOMEZ (American, b. 1987)
Forest Substation, 2013. Mezzotint. Edition of
 20. Signed. 8-1/2 x 10 inches. \$200.



76. Francisco GOYA (Spanish, 1746–1828)
Estan Calientes (It's Hot). From
 Plate 13 for
Los Caprichos.
 Etching and
 aquatint, 1799.
 First Edition.
 Reference: Harris
 48. 8-1/2 x 6
 inches. [45094c]
 \$2,800.



77. Reginald LESLIE GROOMS (American, 1900-1989) *The Scissors*. Lithograph, 1932. Signed, dated, titled and numbered in pencil. 7-1/2 x 9-5/8 inches. [43579c] \$165.



78. Reginald LESLIE GROOMS (American, 1900-1989) *The Toe Hold*. Lithograph, 1932. Signed, dated, titled and numbered in pencil. Signed and dated in the stone. Edition 15/40. 7-5/8 x 9-1/2 inches. Rippling, toned, some scattered foxing. [43587c] \$165.



79. Paul M. GUSTIN (American, 1886-1974) *The Palace of Venetian Life*. Etching, 1920. Edition 3/50. Signed. 6-1/8 x 4-3/4 inches. A few spots of foxing. [43439c] \$125.



80. Thomas HANDFORTH (American, 1897-1948) *Untitled*. Transfer lithograph. Edition 30. Signed. 11-1/4 x 14-1/4 inches. Third state. [43423c] \$200.



81. Kent HAGERMAN (American, 1893-1978) *Coos Bay Logging*. Etching. Signed. 6-5/8 x 9-1/8 inches. [43504c] \$185.



82. Kent HAGERMAN (American, 1893-1978) *Bowl Action-Florida*. Etching. Signed. 6-3/4 x 9-1/2 inches. [43576c] \$125.



85. Joseph HIRSCH (American, 1910–1981) *Soft and Low*. Lithograph, 1964. Edition 250. Signed. Published by Associated American Artists. 12 x 5-1/2 inches. [45270c] \$685.



86. William LEE HANKEY (British, 1869–1952) *Mother and Child*. Etching, c. 1920. Signed. Artist's blindstamp. 7-3/4 x 7-1/4 inches. [45273c] \$485.

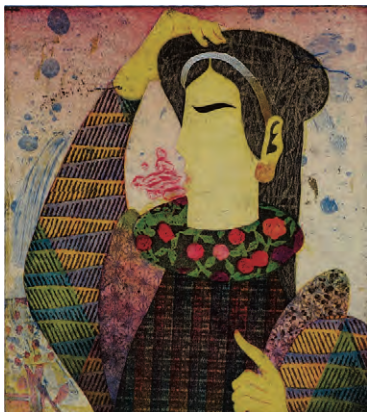
87. Ellen HECK (American, b. 1983) *The White Rabbit and Alice*, 2014. Drypoint and wood block. Edition 9. Signed. 24 x 18 inches. \$800.

83. Arthur WILLIAM HEINTZELMAN (American, 1891–1965) *Guitar Player*. Etching and Drypoint. Signed. 11 x 7-3/4 inches. [43411c] \$285.



84. Ellen HECK (American, b. 1983) *Indirectly Attached: Girls and Gold*, 2014. Drypoint and wood block. Edition 5. Signed. 18 x 21 inches. \$800.





88. Yuji
HIRATSUKA
(b. 1954) *Red
Breath*. Mixed
color intaglio,
1995. Edition
A.P. Signed. 9 x
8 inches.
[45277c] \$475.



89. Yuji
HIRATSUKA
(b. 1954)
Flower Trader.
Mixed color
intaglio, 1999.
Edition 7/40.
Signed. 7 x
5-7/8 inches.
[45278c] \$450.



90. Joseph
HIRSCH
(American,
1910–1981)
Hecklers.
Lithograph.
Signed. 9-3/4 x
15-1/4 inches.
[43527c] \$750.



91. Stanley
**WILLIAM
HAYTER**
(British,
1901–1988)
Symmetry.
Color viscosity
etching, 1970.
Edition 5/100.
Signed. 23-1/4
x 19 inches.
[45282c]
\$475.



92. Leslie **HENDERSON** *Peace*.
Mixed Intaglio. Signed. Also
monogrammed in the plate.
9-5/8 x 7 inches. [43503c] \$175.



93. Karl HOFER (German, 1878–1955) *Two Heads*. Drypoint, c. 1927. Signed. Edition #278. 9-1/4 x 7 inches. Collector stamp on verso, losses along right margin edge. [43773] \$1,200.



94. Paul HORIUCHI (1906–1999) *Summer Leaves*. Collage. 1975. Signed lower right. 19-3/4 x 12-3/4 inches. [45165c] \$3,500.



95. Friedensreich HUNDERTWASSER (Austrian, 1928–2000) *Crusade of the Crossroads*. From from REGENTAG PORTFOLIO. Silkscreen in 17 colors with metal imprint in 7 colors and an application of ground glass on tarred paper, 1971/1972. Edition 2102/3000. Signed in the image. Printed by Dietz Offizin, Lengmoos. Published by Ars Viva, Zurich. Reference: Koschatzky 53. 19-5/8 x 26-3/8 inches. [43879c] \$1,800.



96. John JACOBMEYER *Raise My Head*, 2010. Wood engraving on Gampi Torinoko paper. Signed. AP. Approx. 5 inches diameter. \$200.



97. Peter HURD (American, 1904–1984) *Portrait of Bernabé*. Lithograph from a 1937 drawing, printed in 1968. Signed. Edition AP; Regular edition 100. Reference: Meigs #XLII. 14 x 11-1/4 inches. [43449c] \$385.



98. Harold E. KEELER (American, 1905–1968) *House Boat Children*. Wood engraving, 1945. Signed. 5 x 7-1/4 inches. [43846] \$425.



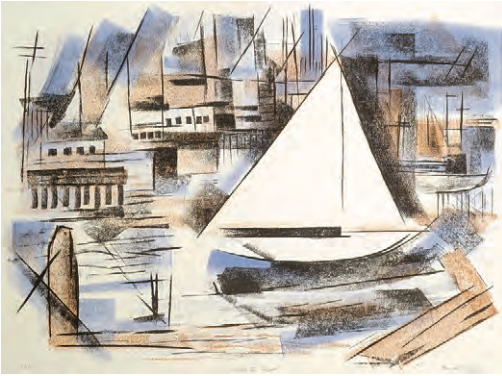
99. Philip KAPPEL (American, 1901–1981) *Cape Codder*. Drypoint, 1955. Signed. Reference: Field/Hall Catalog # 212. 5-7/8 x 4 inches. [43435c] \$200.



100. Kaoru KAWANO (Japanese, 1916–1965) *Girl and Ogi Fan*. Color woodblock, c. 1955. Edition Unnumbered. Artist Seal Stamp. 15 x 9 inches. [45298c] \$225.



101. Kaoru KAWANO (Japanese, 1916–1965) *Small Birds*. Color woodblock, c. 1950. Edition Unnumbered edition. Artist Seal Stamp. 15 x 10 inches. [45299c] \$250.



102. Harold E. KEELER (American, 1905–1968) *Sails in Port*. Color lithograph. Signed. 13-1/2 x 18-1/2 in. [30469c] \$325.



103. Charles EUGENE KLEBE (American, b. 1907) *Knockout*. Woodcut, mid 1930's. Artist initial in block. 8-1/8 x 8-5/8 inches. [43583c] \$225.



104. Lois S. KEELER (American, 1904–97) *Crab Garden #2*. Dry pigment stencil on mat board, 1938. Edition: 2/25. Signed, titled and numbered in pencil. Image: 11 x 16-1/2 inches. [31165c] \$350.



105. Gene KLOSS (American, 1903–1996) *Hoop Dancer*. Drypoint. Edition 13/35. Signed. 5 x 4 inches. [43552c] \$275.



106. Kathe KOLLWITZ (German, 1867–1945) *Zertretene*. Etching. Date of plate: 1900. Posthumous printing. Von der Becke blindstamp. Reference: Klipstein 48 iv B2. 9 x 24-1/4 inches. [45307c] \$850.



107. Tsuchiya KOITSU (Japanese, 1870–1949) *Nagoya Castle*. Color woodblock, 1937. Oban / 10 x 15 inches. [43870c] \$300.



108. Jacob LANDAU (American, 1917–2001) *The Witch*. Color woodcut, 1954. Edition 42/200. Signed. 12 x 12 inches. [45271c] \$475.



109. Troy KINNEY (American, 1871–1938) *Moonlight*. Drypoint, 1925. Edition 125. Signed. 7-1/2 x 11-1/8 inches. [43406c] \$250.



110. Christian KRUCK (German, 1925–1985) *Bergamon, Turkei (Market)*. Color lithograph, 1968. Edition 8/14. Signed. 16-3/4 x 23-3/8 inches. [45014c] \$485.



111. Michael KNIGIN (American, 1942–2011) *Ensaburo*. Serigraph, 1979. Signed. Edition 267/300. 26-1/4 x 18-1/4 inches. [45416c] \$600.



112. **Jean-Luc LE BALP** (French, b. 1961) *Baranco 10*. Color Etching, 2013. Signed. 38 x 7 inches. \$660.



113. **Akira KUROSAKI** (Japanese, b. 1937) *Complete China Portfolio*. 10 color woodblock prints, 1980 (two shown here). Edition 11/75. Published by Shiota Gallery. 18 x 12-3/4; Sheets: 22-1/4 x 16-3/4 inches. Excellent condition, full set in red silk box. [45195] \$3,500.



114. **Jack LEVINE** (American, 1915–2010) *Careless Love*. Etching and aquatint, c. 1965. Edition 71/100. Signed. 17-1/2 x 22-1/8 inches. [45190c] \$600.



- 115. Martin LEWIS** (American, 1881–1962) *Grandpa Takes a Walk*. Drypoint and sand ground, 1935. Signed in the plate lower right. Reference: McCarron 115. 8-7/8 x 11-3/4 inches. Commissioned by the American College Society of Printmakers. [45274c] \$1,000.



- 116. Jack LEVINE** (American, 1915–2010) *Helen Fourment*. Lithograph, 1965. Edition 2/35. Signed in pencil, signed in the stone. 16 x 11 inches. Some toning, mostly at edge of sheet. [45191c] \$450.



- 117. Ella FILLMORE LILLIE** (American, 1887–1973) *Sunny Hours*. Lithograph. Edition 50. Signed. 10 x 12-3/4 inches. Estate stamp verso. [43523c] \$325.



- 118. Art LANDY** (American, 1904–1977) *The Harvesters*. Lithograph. c. 1940. Signature in pen, annotated "25-17". 10 x 7-3/4 inches. Rippling. [43585c] \$125.



- 119. Nat LOWELL** (American (b. Latvia), 1880–1956) *Fulton Market*. Etching. Signed. Published by Published by Associated American Artists. 9-1/4 x 11-7/8 inches. [43172c] \$285.



120. Mariette LYDIS (Austrian, 1887–1970) *Le Chant des Amazones: huit lithographies de Mariette Lydis. The Song of the Amazons*, by Henri de Montherlant. Eight original lithograph illustrations by Mariette Lydis. Published by Govone Éditeur, Paris, 1931. Frontispiece signed by Lydis. Book size: 11-5/8 x 9-1/8 x 1 inches; Average lithograph size: 6-3/8 x 5-1/2 inches. Cover has losses at edges, but included prints in excellent condition. Sold as complete book. [45179c] \$650.

121. Donald MACLAUGHLAN (American, 1876–1938) *The House of Mirth*. Etching and drypoint, 1926. Signed. Reference: W. 47. 10 x 12-1/2 inches. [43551c] \$200.



122. Charles WHEELER LOCKE (American, 1899–1983) *The Tip*. Etching, c. 1937. Annotated by the artist "WPA PROOF". 6-3/4 x 4-7/8 inches. Soft crease in image. [43447c] \$475.



123. Walter RONALD LOCKE (American, 1898–1983) *Edge of the Pines-Fla.* Etching, 1938. Signed. 12-1/2 x 9-1/8 inches. [43513c] \$275.



124. Walter RONALD LOCKE (American, 1898–1983) *“The Old Mulberry Tree” Fla.* Etching, 1938. Signed. 8-5/8 x 10-7/8 inches. [43512c] \$285.



125. Donald MACLAUGHLAN (American, 1876–1938) *Untitled.* Drypoint. Signed. 6-1/8 x 5-7/8 inches. [43547c] \$165.

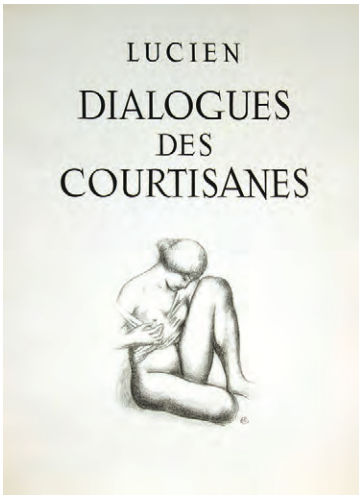
126. Kyra MARKHAM (American, 1891–1967) *Skater's on Hope's Pond.* Lithograph, 1944. Edition 25. Signed. 10-1/4 x 13 inches. [43529c] \$285.



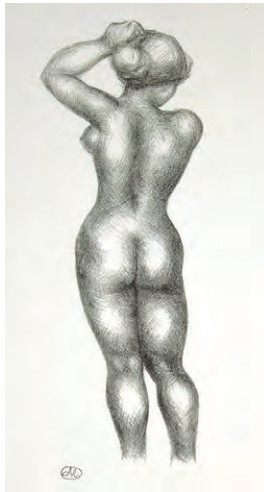
127. Haku MAKI (Japanese, 1924–2000) *Poem 69-53.* Concrete relief print. 1969. Edition 143/202. Signed. 10-1/2 x 10-1/2 inches. [45139c] \$275.



128. Luigi LUCIONI (American, 1900–1988) *Tree Portraits.* Etching, 1971. Signed. Edition 237/250. Reference: Embury # 156. 10-3/4 x 7-7/8 inches. [43811c] \$250.



129. Aristide MAILLOL (French, 1861–1944) *Complete Portfolio of Lucien's Dialogues des Courtisanes*. Portfolio book, translated by Charles Astrue and illustrated with 35 original lithographs by Maillol, 1948. Edition 147/275. Printed by Mourlot. Published by Henri Creuzevault and Dina Vierny, Paris. Case: 16 x 12 x 2 inches; Sheet size: 15-1/4 x 11-1/4 inches. Lithograph sizes vary. The lithographs were printed by Mourlot four years after the artist's death. Slipcase is soiled and stained, but the contents are in perfect condition. 7 of the 35 lithographs are completely without text recto or verso and are full page. [45473c] \$2,800.





130. Reginald MARSH (American, 1898–1954) *Merry-Go-Round*. Etching. Date of plate: 1930. Date of impression: 1969. Whitney Edition. Embossed initials WM. Edition 37/100. Reference: Sasowsky 99. 6-3/4 x 9-7/8 inches. [45175c] \$425.



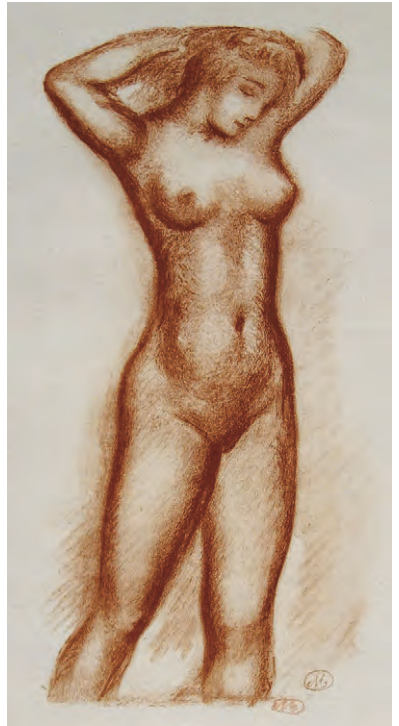
132. Ivan MESSENGER (American, 1895–1983) *Furlough Fun #1*. Lithograph, 1943/5. Edition 30. Signed by printer R. Roehrer. 9-3/4 x 7-1/4 inches. [43607c] \$350.



133. Andre MASSON (French, 1896–1988) *Dame au Tournesol*. Color lithograph, 1970. Edition 139/200. Signed. 23-1/4 x 17-1/2 inches. [45283c] \$375.



131. Fletcher MARTIN (American, 1904–1979) *High, Wide and Handsome*. Lithograph, 1953. Edition 250. Signed. Published by Associated American Artists. 13 x 9 inches. [43409c] \$700.

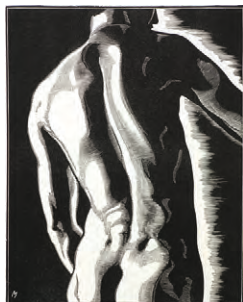


134. Aristide MAILLOL (French, 1861–1944) *Nude with Arms Raised*. From *Ovid's L'Art d'Aimer*. Lithograph, 1935. Edition 34/50. Monogram in the stone. Reference: Guerin 307. 12-1/2 x 6 inches. [45098c] \$1,200.



135. (opposite)
Martin PETERSEN
 (American, 1870–
 1956) *Sunset, New
 Hampshire*. Etching,
 1948. Signed. Edition
 250. 9 x 8-7/8 inches.
 [43809c] \$325.

136. John C.
MENIHAN (American,
 1908–1992) *Fiddler John*.
 Lithograph, c. 1942.
 Edition Proof #2. Signed.
 Reference: L. 4-P. 11-1/2
 x 15 inches. Sheet slightly
 crumpled at top left
 margin edge, away from
 image. [45370c] \$650.



137. Leo JOHN
MEISSNER
 (American,
 1895–1977)
Adam. Wood
 engraving, 1930.
 Edition 50.
 Signed. 9-13/16
 x 7-13/16 inches.
 [43525c] \$150.



138. John C. MENIHAN (American, 1908–
 1992) *Pine Tree*. Lithograph. Signed in pencil.
 Reference: L. 165-T. 12 x 14-3/4 inches. Slight
 mat burn and toning. [45344c] \$675.



139. John C. MENIHAN (American,
 1908–1992) *Connie*. Lithograph, c. 1936.
 Signed. Reference: L. 23-M. 8-1/4 x 6-1/4
 inches. [45394c] \$500.



140. John C. MENIHAN (American, 1908–
 1992) *Woman in Doorway*. Lithograph. Signed.
 Reference: L. 209-P. 12-1/8 x 16 inches. Faint
 mat burn and staining. [45373c] \$400.



141. Kenneth HAYES MILLER (American, 1876–1952) *Three Women Shoppers*. Etching, 1929. Signed. Published by Associated American Artists. 5-1/4 x 6-3/4 inches. [43509c] \$300.



142. Ben MOREAU (American, b. 1977) *Citizenihilist*, 2013. Pencil and graphite powder on paper. Signed. 30 x 22 inches. \$900 framed.



143. Francesco MORELLI (Italian, 1768–1830) *Vedute del Campidoglio sul Monte Capitolino...* Etching. Published by Agapito Franzetti, Rome. 14-1/2 x 18-7/8 inches. Signed Robert Dashwood, July 1825 in pen. [43762c] \$600.



144. Joan MIRO (Spanish, 1893–1983) *Ceramiques*. From *Ceramiques de Miro et Artigas*. Color lithograph, 1974. Stamped signature. Published by Maeght Editeur, Paris. Reference: M. 928. 15 x 24-1/2 inches. Maeght watermark. Faint tape ghost top and bottom edge of wide margins. [43880c] \$1,500.



145. Gabor PETERDI
(American, b. 1915) *Yosemite*.
Etching, 1967. Edition 127/210.
Signed. 17-3/4 x 14-3/4 inches.
Faintly toned. [45280c] \$275.



146. Mina PULSIFER
(American, 1899–1989)
Vendors. Lithograph.
Signed. 14 x 10 inches.
[43396c] \$250.



147. Giovanni B. PIRANESI (Italian,
1720–1778) *Del Castello
dell' Acqua Giulia (Map,
elevation and detail of
the aqueduct)*. From
Tav. I Fig. I *Le Rovine
Del Castello Dell' Acqua
Giulia*. Etching. 14 x 9-1/2
inches. Fleur de lis in
double oval watermark.
[45337c] \$150.

**148. Concord and Cavendish
MORTON** (Scottish, 1911–
2010) *Empress of India in
Dry Dock*. Color woodblock.
Signed by both artists. 13-3/4
x 8 inches. [43873c] \$850.



149. (opposite) Pablo O'HIGGINS (American, 1904–1983) *Presidente Ejidal*. Lithograph, 1953. Edition 50/50. Signed and annotated. 17-3/4 x 13 inches. Printer's blindstamp top margin edge. [43847c] \$600.



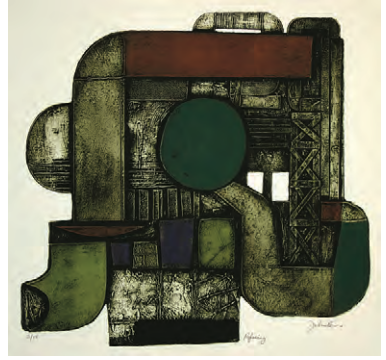
150. Nathan OLIVEIRA (American, b. 1928) *Bull #1*. Monotype on paper, 1957. Signed. Edition Series #1, 1/10. 24-1/4 x 32 inches. Mounted on masonite. [45268c] \$1,800.

151. Pablo PICASSO (Spanish, 1881–1973) *Modele et Sculpture Surrealiste*. From Plate 74 for Suite Vollard. Etching, 1933. Signed. Reference: Bloch 187, G. 347. 10-1/2 x 7-1/2 inches. [45104c] \$13,000.



152. (opposite left) Giovanni B. PIRANESI (Italian, 1720–1778) *Veduta Degli Avanzi Del Castro Pretorio Nella Villa Adriana A Tivoli*. Etching, 1770. Reference: Hind i/iv. 14-3/4 x 26-1/8 inches. [43758c] \$2,200.

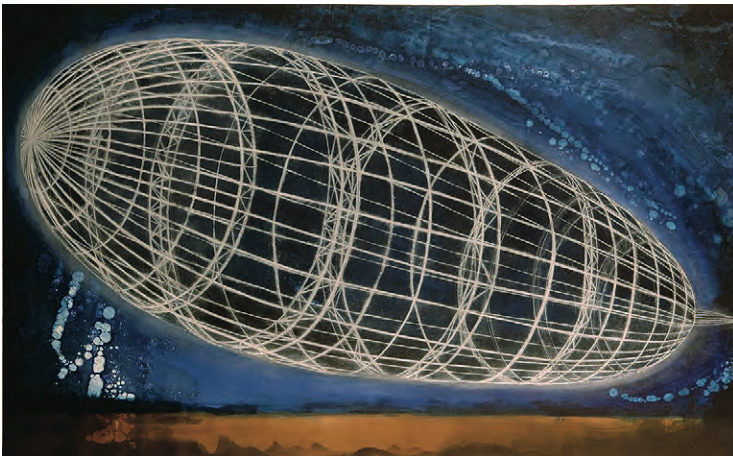
153. John ROSS (b. 1921) *Refinery*. Collograph. Edition 2/50. 17-1/2 x 18-1/4 inches. [16079] \$450.



154. Horatio NELSON POOLE (American, 1884–1949) *Study for "Bathers"*. Graphite on thin tissue. 9-1/2 x 11-3/4 inches. Sold together with etching of the same subject. Etching signed in the plate. [43417c] \$600.



155. Luis QUINTANILLA (Spanish, 1895–1978) *Squash*. Etching, 1935. Signed. 12-7/8 x 9-7/8 inches. [43508c] \$325.



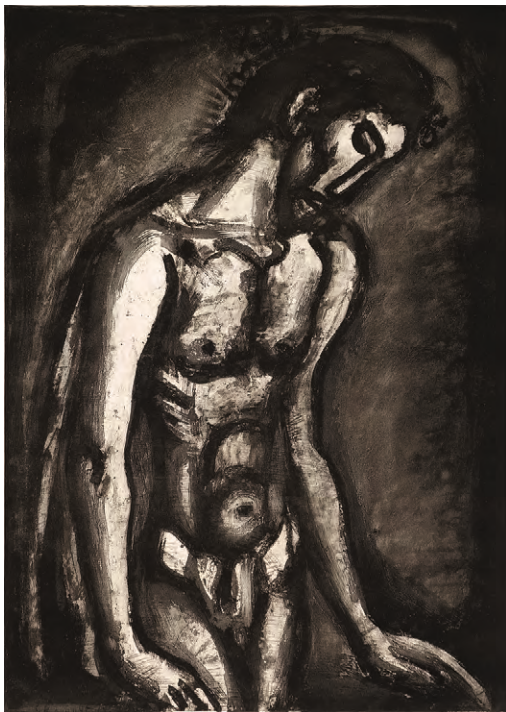
156. Jenny ROBINSON (British/American, b. 1957) *Zeppelin*, 2014. Drypoint with monotype. Edition of 6 EV. Signed. 34 x 52 inches. \$3400.



157. Georges R. ROUAULT (French, 1871–1958) *Il serait si doux d'aimer (It would be so sweet to love)*. Plate 13 for *Miserere*. Aquatint, roulette and drypoint, 1948. Edition 450. Reference: Wofsy 120. 22-3/4 x 16-1/4 inches. Trimmed to or just within the platemark. [45107c] \$2,400.



158. Ernest DAVID ROTH (German/American, 1879–1964) *Siena*. Etching on FJ Head & Co., 1924. Signed. 10-3/8 x 9-5/8 inches. [43563c] \$275.



159. Michael RON *Nativity (Three Kings)*. Etching. Signed. 11-3/4 x 8-3/8 inches. [43453c] \$185.

160. Georges R. ROUAULT (French, 1871–1958) *Il a été maltraité et opprimé et il n'a pas ouvert la bouche (He was mistreated and oppressed and he did not open his mouth)*. Plate 21 for *Miserere*. Lift ground aquatint and drypoint over photogravure, 1948. Edition 450. Reference: Wofsy 128. 22-7/8 x 16-1/4 inches. [45106c] \$1,600.



161. Ben SHAHN (American, 1898–1969) *To Parents One Had To Hurt*. From *THE SAKE OF A SINGLE VERSE* by Rilke. Lithograph on Velin d'Arches, 1968. Edition 750. Signed in the stone lower right. Printed by Atelier Mourlot, Ltd., New York. Reference: Prescott 125. 15-1/4 x 12-3/4 inches. Toned. [43853c] \$475.



164. Tetsuro SAWADA (Japanese, 1935–1999) *Fantasia (Grey)*. Serigraph, 1987. Edition 73/120. Signed. 24 x 15-3/4 inches. [45137c] \$600.



162. Yngve EDWARD SODERBERG (American, 1896–1971) *The Weather Rail*. Drypoint. Signed. 6-7/8 x 8-3/4 inches. [43511c] \$275.



163. Carl MAX SCHULTHEISS (German/American, 1885–1961) *Shepherds on the Rocks*. Etching and drypoint. Artist monogram in plate. 6-7/8 x 8-1/8 inches. [43550c] \$175.



165. Harry SHOKLER (American, 1896–1978) *Plane Spotter*. Color silkscreen, 1946. Signed. 14-1/4 x 12 inches. [43627c] \$325.



166. Ben SHAHN (American, 1898–1969) *Beatitude*. Color wood engraving, 1955. Edition 53/400. Signed by both artists. Printed by Leonard Baskin. Published by International Graphic Arts Society, Inc., New York. 10-1/8 x 15-1/8 inches. [45279c] \$385.



167. Carl MAX SCHULTHEISS (German/American, 1885–1961) *The Shepherd*. Engraving, 1948. Signed. 2-3/8 x 3-1/4 inches. [43392c] \$85.



168. Theophile ALEX STEINLEN (Swiss/French, 1859–1923) *Leaving the Bacchanal*. Lithograph. Signed. 20 x 12-5/8 inches. [43647c] \$750.



169. Theophile ALEX STEINLEN (Swiss/French, 1859–1923) *L'Adieu (Le Depart Au Combat)*. Lithograph, 1915. Edition 176/400. Signed in the stone. 15 x 11-3/4 inches. [43648c] \$600.



170. Blair HUGHES STANTON (English, 1902–1981) *Wisdom & Justice*. Wood Engraving, 1956. Signed. 4-7/8 x 3-1/2 inches. [43487c] \$300.



171. Harry STERNBERG (American, 1904-2002) *Secret of Life*. Aquatint and etching. 1936. Signed proof outside the unsigned edition of 200. Published by the American Artist Group. Reference: Moore 129. 8 x 14 inches. [20141c] \$675.



172. William STRANG (English, 1859-1921) *Street-dancing, London*. Drypoint. 1914. Signed. Printed by his son. Reference: Only state. 7 x 7-7/8 inches. [43489c] \$200.



174. Charles SPITZACK (American, b. 1987) *Koala Bears*, 2014. Woodcut. Edition of 14. Signed. 12 x 9 inches. \$150.



173. Fumiko SUZUKI (Japanese, b. 1988) *One Day*. Lithograph, 2011. Edition of 4. Signed. 27 1/2 x 21 inches. \$380.



175. Charles SPITZACK (American, b. 1987) *Cat Scratch Fever*, 2014. Woodcut. Edition of 17. Signed. 11 1/2 x 9 inches. \$150.



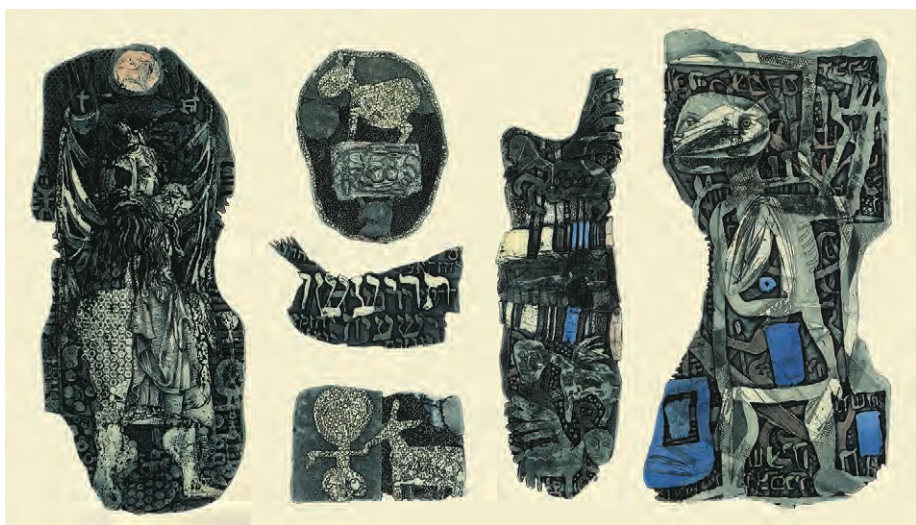
176. Charles SURENDORF (American, 1906–1979) *Ghost Town - Hornitos*. Linoleum engraving. 1st Edition. 100. Signed. 9-7/8 x 13 inches. [43531c] \$175.



177. Charles SURENDORF (American, 1906–1979) *Old Fire Engine House - Columbia*. Linoleum engraving. 2nd Edition. 100. Signed. 13-1/2 x 10 inches. [43532c] \$175.



178. Julie SPEED *In Harm's Way*. Handcolored intaglio. Edition 20. Signed. 11 7/8 x 14 5/8 inches. [45417c] \$375.



179. Dick SWIFT (American, 1918–2010) *The Prophecy*. Color viscosity etching, 1968. Edition Trial proof (blue version). Signed. 15 x 26-3/4 inches. [45184c] \$850.



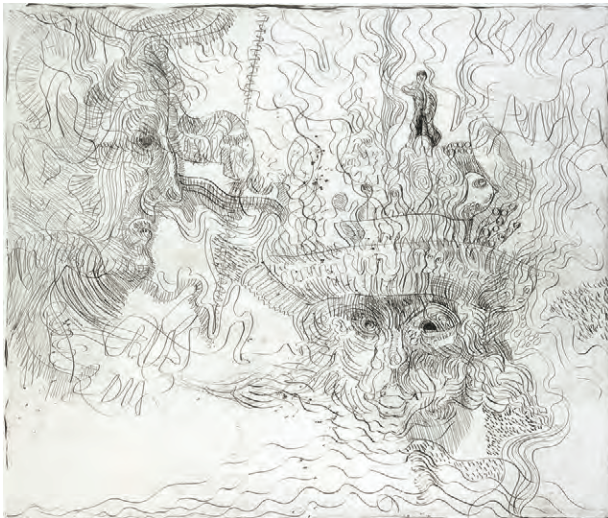
180. Ryohei TANAKA (Japanese, b. 1933) *Bamboo Sprout*. Etching. Edition 79/100. Signed. 1969. Tanaka Wk. #49. Minor skinning verso from prior hinges in margin. 8-1/4 x 11-1/4 inches. [43732c] \$600.



181. Ryohei TANAKA (Japanese, b. 1933) *Wind*. Etching. Edition 56/100. Signed. 1976. Tanaka Wk. #171. 12-1/4 x 15-3/4 inches. [43736c] \$700.



182. Ryohei TANAKA (Japanese, b. 1933) *The Maple (Daimaiji Temple)*. Color etching and aquatint. Edition 84/100. Signed. 2007. Tanaka Wk. #726. 13-3/8 x 10-5/8 inches. [43753c] \$1,100.



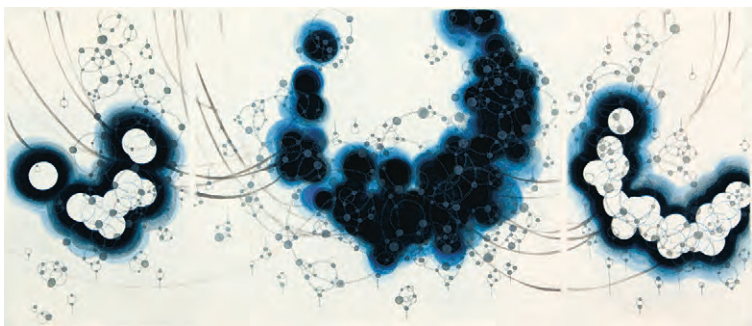
183. Mark TOBEY (American, 1890–1976) *Erker Presse Nr. 24*. Lithograph on BFK Rives, 1970. Edition 8/30. Signed. Published by Erker Pressa, St. Gallen. 12 x 14 inches. Erker Pressa blindstamp bottom left corner. [45303c] \$600.

184. (opposite L) James G. TODD (American, b. 1937) *Frieda Kahlo*. Wood engraving, 1983. Edition 22/HP. Signed. 8 x 7 inches. [43369c] \$425.

185. (opposite R) James G. TODD (American, b. 1937) *Kathe Kollwitz*. Wood engraving, 1984. Edition 21/HP. Signed. 8 x 7 inches. [43370c] \$485.



186. Seiko TACHIBANA
(Japanese/
American,
b. 1964)
*Origin-Blue
Consonant-5*,
2011. Mixed
intaglio. Edition
of 25. Signed.
8-7/8 x 21
inches. \$800.



187. Ryohei TANAKA (Japanese, b. 1933) *Warehouse*. Etching, 1984. Edition 39/120. Signed.
Reference: Tanaka Wk. #347. 9-1/2 x 15-3/4 inches. [43742c] \$900.



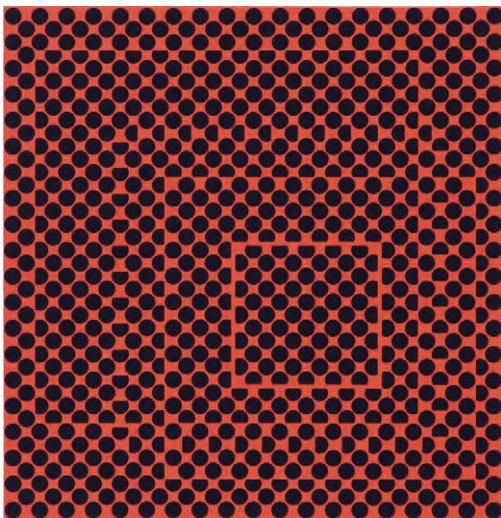
188. Kate WADE *Still Life*. Oil on heavy paper. Signed verso. 10 x 13 inches. [45047c] \$385.



189. Shigeki TOMURA (Japanese, b. 1951) *End of Summer I*, 2006. Intaglio. Edition 47. Signed. 5-3/4 x 3-3/4 inches. \$270.



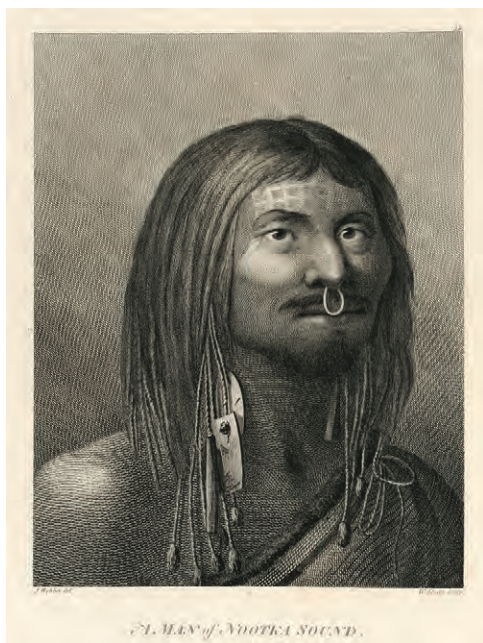
190. Uemura SHOEN (Japanese, 1875–1949) *Hotary (Firefly)*. Color woodblock, c. 1970. Edition 300. Published by Yuyudo. 15-1/4 x 18-1/6 inches. [43848] \$750.



191. Victor VASARELY (Hungarian, b. 1908) *Untitled*. Serigraph, 1969. Edition 83/300. Signed. 17-3/4 x 17-1/8 inches. [45366c] \$475.



192. Shigeki TOMURA (Japanese, b. 1951) *South Wind*, 2000. Intaglio. Edition HC 5/7. Signed. 5-3/4 x 5-3/4 inches. \$360.



193. **John WEBBER** (British, 1751–1793) *A Man of Nootka Sound*. Plate 38 for *Voyage to the Pacific Ocean... 1776-1780*, recording the Third Voyage of Captain Cook. Engraving by W. Sharp after drawing by John Webber. Watermark. Plate mark: 11-7/8 x 9-1/4 inches. [29044c] \$425.



194. **Unknown** (American) *Original ink drawing to illustrate Richard Jefferies "Bevis The Story of a Boy"*. For Chapter XXIV *Sailing Continued Voyage to the Unknown Island*. Approx. 5-1/2 x 3 inches. [43454c] \$300.



195. **Lynd WARD** (American, 1905–1985) *Three Angels*. Wood engraving. Signed #32 lower left corner. 18-5/8 x 15-1/8 inches. [28423c] \$650.



196. **John WILLIAM J. WINKLER** (Austrian-American, 1894–1979) *Rambling Tenements on T.H. (Telegraph Hill)*. Drypoint. 1920. Signed. 12-3/8 x 8 inches. [43534c] \$375.



197. Paul WUNDERLICH
(German, 1927–2010) *Horen!*
Color lithograph,
1982. Signed.
Reference: Huber
685d. 14-1/2 x 10-
1/2 inches. [45276c]
\$350.



198. Anders LEONARD ZORN (Swedish, 1860–1920)
The Letter. Etching, 1913.
Signed. Reference: Asplund
ii/ii. 6-1/4 x 4-5/8 inches.
[42917c] \$950.



199. Sadao WATANABE
(Japanese, 1913–1996) *Return of the Prodigal Son*. Color stencil. Signed.
10 x 12-1/2 inches / Sheet: 11-1/2 x 15-1/2 inches. [45174c] \$450.



200. koreloy wildrekinde-mcwhirter
(Born 1950) *haunted carrierre pigeonne*. From redhanded: a songe forre the loste. Line etching, 1997-2007. Edition 24/43. Signed. 17-1/2 x 11-1/2. [45471c] \$700.

201. koreloy wildrekinde-mcwhirter
(Born 1950) *ausschusse*. From redhanded: a songe forre the loste. Line etching, 1997-2007. Edition 24/43. Signed. 17-1/2 x 11-1/2 inches. [45410c] \$700.





202. Anders LEONARD ZORN
(Swedish, 1860–1920)
Reading (Mr. and Mrs. Charles Deering).
Etching, 1893. Signed.
Reference: Asplund 78.
9-3/8 x 6-1/4 inches.
[42921c] \$1,800.



203. Anders LEONARD ZORN
(Swedish, 1860–1920)
Queen Sophia. Etching,
1909. Signed. Reference:
Asplund 223ii/ii. 9-3/4 x
7 inches. [42920c] \$850.

CATALOG LIST NO. 91 - Fall 2014

CONTACT: Shayla Alarie (206) 624-6700 or shayla@davidsongalleries.com

All works are subject to prior sale. All items are guaranteed as described. A certificate of authenticity is available upon request. Please contact the gallery with questions or to discuss a work in detail. Dimensions are given as inches, height precedes width. Orders are shipped promptly upon receipt of full payment. Works are normally shipped insured via U. S. Postal Service unless other arrangements are specified. Shipping charges vary and are dependent on size and value of items ordered. Washington State residents must add 9.5% sales tax. Items may be sent "on approval" beginning two weeks after initial catalog release. Works may be returned to the gallery for any reason within two weeks of purchase for a full refund less shipping. Returned works should be securely packed and fully insured.

Please inform the gallery of any special collecting interests. Davidson Galleries is always willing to consider purchasing or consigning fine original prints either individually or as entire collections.

Davidson Galleries is a charter member of the INTERNATIONAL FINE PRINT DEALERS ASSOCIATION and is committed to its strict ethical standards. 

DAVIDSON GALLERIES • www.davidsongalleries.com
313 Occidental Avenue South, Seattle, WA 98104 • Hours: Tuesday-Saturday 10am-5:30pm



DOWNLOADABLE CATALOGS AVAILABLE

As part of our commitment to produce less waste, Davidson Galleries is proud to offer our catalogs as **free downloadable PDFs** through **DAVIDSONGALLERIES.COM**. Simply visit the Publications page on the website to download.

If you would prefer to continue receiving our semi-annual **printed catalogs by mail**, annual subscriptions are available for **\$12**, deductible from your first catalog purchase. Please contact the gallery for details.



Scan this QR code with your smart phone to join our monthly email newsletter list!

FRONT COVER: 204. Tomiyuki SAKUTA (Japanese, b. 1960) *100 Faces*, 2012. Mixed intaglio prints. Image: 5-3/4 x 3-3/4 inches, Paper: 7-3/4 x 5-1/4 inches, Wooden Box: 9-1/8 x 6-1/4 x 5 inches.

Shown are 20 of the 103 images included in this portfolio. The entire collection is enclosed in a wooden box adorned with an etched copper plate used to create one of the faces of the series. The entire portfolio is priced at \$3000, faces may be purchased individually for \$125. The complete selection of prints can be found at: www.davidsongalleries.com/artists/sakuta/sakuta-100faces.php.

DAVIDSON GALLERIES
313 OCCIDENTAL AVE S • SEATTLE, WASHINGTON 98104
WWW.DAVIDSONGALLERIES.COM

CHANGE SERVICE REQUESTED

CATALOG LIST NO. 91 - FALL 2014



205. Theophile ALEX STEINLEN (Swiss/French, 1859–1923)
Refugees. Lithograph, 1915. 12-1/2 x 20 inches. [283.40c] \$600.