



# DAVIDSON GALLERIES

SPRING 2014 CATALOG  
 Original Antique, Modern & Contemporary  
 Works on Paper



**1. John James AUDUBON** (French/American, 1785-1851) *Anna Hummingbird* (Part 51, Image 252). From THE BIRDS OF AMERICA... Handcolored lithograph. Bowen edition 1841. Binding residue along left margin and well away from image. 8-1/4 x 5-1/4 inches. [42751c] \$1,200.



**2. John James AUDUBON** (French/American, 1785-1851) *Ruff-necked Hummingbird* (Part 51, Image 254). From THE BIRDS OF AMERICA... Handcolored lithograph. Bowen edition 1841. 7-7/8 x 5 inches. [42750c] \$1,000.



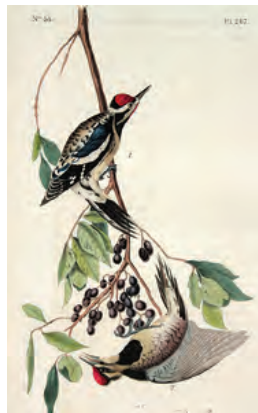
**3. John James AUDUBON** (French/American, 1785-1851) *Mallard* (Part 77, Image 385). From THE BIRDS OF AMERICA... Handcolored lithograph. Bowen edition ca. 1856. Small stain in left margin and binding residue along top margin away from image. 4-7/8 x 7-3/4 inches. [42685c] \$800.



**4. John James AUDUBON** (French/American, 1785-1851) *Great American White Egret* (Part 74, Image 370). From THE BIRDS OF AMERICA... Handcolored lithograph. Bowen edition 1841. 5-1/8 x 7-3/4 inches. [42831c] \$1,500.



**5. John James AUDUBON** (French/American, 1785-1851) *Blue Jay* (Part 47, Image 231). From THE BIRDS OF AMERICA... Handcolored lithograph. Bowen edition 1841. Small tears from binding in left margin. 6 x 5 inches. [42747c] \$2,000.



**6. John James AUDUBON** (French/American, 1785-1851) *Yellow-bellied Woodpecker* (Part 54, Image 267). From THE BIRDS OF AMERICA... Handcolored lithograph. Bowen edition ca. 1941. 8 x 4-3/4 inches. [42713c] \$500.



**7. John James AUDUBON** (French/American, 1785-1851) *Wood Duck / Summer Duck* (Part 79, Image 391). From THE BIRDS OF AMERICA... Handcolored lithograph. Bowen edition ca. 1856. 7-1/2 x 5-1/4 inches. [42684c] \$800.



**8. Boris ARTZYBASHEFF** (Ukrainian/American, 1899-1965) *Centtaures*. Wood engraving. Edition 80. Signed. Tape residue in margin corners. 7-3/4 x 11-1/4 inches. [43700c] \$800.

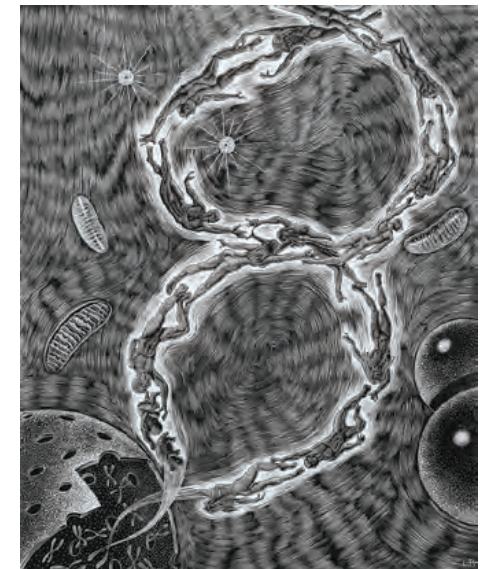


**9. Jean ARP** (French, 1887-1966) *Composition*. Color woodcut on BFK Rives. Edition 50. Signed. 1959. Arnzt 228. 8-1/8 x 6-3/4 inches. [43357c] \$900.

**10. Carl AUSTEN** (American, 1917-1999) *Post*. Watercolor and gouache on paper. Signed. 1943. 12 x 14-3/8 inches. [43595c] \$350.



**11. Lou BARLOW** (American, 1908-1992) *Gourmet Shop*. Wood engraving. Edition 9/50. Signed. 1984. 7 x 5 inches. [43206c] \$650.



**12. Lou BARLOW** (American, 1908-1992) *Genesis*. Wood engraving. Edition 5/50. Signed. 5 x 7 inches. [43207c] \$900.



**13. Peggy BACON** (American, 1895-1987)  
*The Soul of Thrift*. Drypoint. Signed. Dedicated  
"Love to mother". 1941. Flint 139.  
10 x 6-7/8 inches. [42553] \$1,500.



**14. Peggy BACON** (American, 1895-1987)  
*The Lunch Room* (alternate title: *Lunch at the League*). Drypoint. 1918. Signed. Flint 8.  
5-7/8 x 7-15/16 inches. [42539] \$2,400.



**15. Peggy BACON** (American, 1895-1987)  
*Aesthetic Pleasure*. Drypoint. Edition 174.  
Signed. 1936. Published by AAA. Flint 126.  
5-5/16 x 8-1/2 inches. [42538] \$1,250.



**16. Peggy BACON** (American, 1895-1987) *What's for Dinner (Wellfleet)*. Drypoint. Signed. 1952.  
Flint 191. 8 x 9-7/8 inches. [42535] \$750.



**17. Peggy BACON** (American, 1895-1987) *The Untilled Field*. Drypoint. Edition 250. Signed. Plate: 1936; impression: 1937. Published by AAA. Flint 132.  
5-7/8 x 7-3/8 inches. [42532] \$600.



**18. Peggy BACON** (American, 1895-1987) *Café de la Rotonde*. Drypoint. Signed. Ca. 1922. Flint 49. 7 x 10 inches. [42555] \$800.



**19. Leonard BASKIN**  
(American, 1922-2000)  
*Judith with the Head of Holofernes*. Bronze with patina. Edition 5/7. Signed on the hem of Judith's robe. 1972. Cast at Bedi-Makky Foundry, New York. Jaffe 61. 38-1/2 x 17-1/2 x 13 inches. [43833c] \$18,000.



**20. Frank BENSON** (American, 1862-1951) *On the Kedgwick*. Etching. Edition 150. 1923. Published state. Paff 222. 7-7/8 x 11-7/8 inches. [25813] \$2,400.



21. Max BECKMANN (German, 1884-1950) *Bildnis Dr. Weidner* (*Portrait of Dr. Weidner*). Lithograph. Signed. 1921. Hoffmaier 181. 22-1/4 x 16-1/2 inches. [43777c] \$1,200.



22. Hans BELLMER (German, 1902-1975) Image for *KESTNER-GESELLSCHAFT* (Hanover) Catalog. Mixed intaglio. Edition 163/167. 1967. Mandiargues 75. 11-1/2 x 12 inches. [43243] \$750.



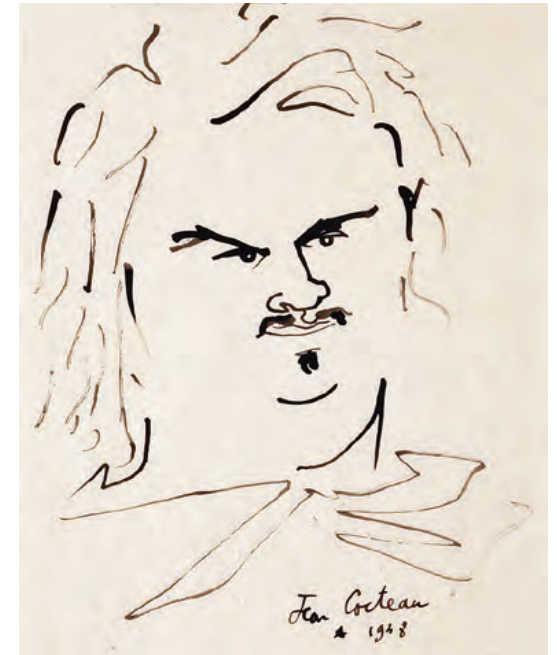
23. Max BECKMANN (German, 1884-1950) *Landschaft mit Ballon* (*Landscape with Balloon*). Plate 14 from GESICHTER (FACES) series. Drypoint. Signed. 1919. Published by Verlag der Marées-Gesellschaft, R. Piper & Co., Munich (blindstamp). Hofmaier 134. 9 x 11-1/2 inches. [43778c] \$10,000.



24. Hans BELLMER (German, 1902-1975) *Tanzendes Skelett* (*Dancing Skeleton*). Engraving on dark brown-grey laid paper in black with white highlights. Edition HC. 14-1/2 x 11 inches. [43311] \$750.



26. Hans BELLMER (German, 1902-1975) *Organische Komposition* (*Organic Composition*). Engraving on thick Japon. Edition XXXIII/LXX. 12-5/8 x 7-3/4 inches. [43310] \$600.



25. Jean COCTEAU (French, 1889-1963) *Portrait of Balzac*. Ink on paper. Signed in ink. 1938. Stamped "Maison Du Bailli, Rue Du Lau, Milly" verso. 10-1/2 x 8-1/4 inches (sheet). [43776c] \$2,800.



27. George Elmer BROWNE (American, 1871-1946) *Wedding Day on the Grand Canal*. Drypoint. Signed. 7-3/4 x 10-3/4 inches. Tape residue on top corner of margin. [43394c] \$325.



28. John Lorin BLACK (American, 1894-1963) *Vosges Mts. - 18*. Watercolor and gouache on board. Signed. 14 x 20 inches. [43619c] \$500.



29. Bernard BRUSSEL-SMITH (American, 1914-1989) *Sailor & His Girl*. Wood engraving. Edition 14/35. Signed. 1941. 6 x 4 inches. [43526c] \$375.

30. Jules CHERET (French, 1836-1933) *Chemins de Fer P-L-M Auvergne*. From MAÎTRES DE L'AFFICHE. Color lithograph. 1899. Appelbaum 173. 11-3/8 x 8 inches. [43640c] \$250.



31. Jules CHERET (French, 1836-1933) *Exposition de l'Art Français sous Louis XIV & Louis XV*. From MAÎTRES DE L'AFFICHE. Color lithograph. 1898. Printed by Chaix, Paris. Published by Corilleux & Co. Appelbaum 137. 11-1/2 x 8 inches. [43638c] \$225.



33. Jules CHERET (French, 1836-1933) *Folies Bergères - Emilienne d'Alençon*. From MAÎTRES DE L'AFFICHE. Color lithograph. 1890. Printed by Chaix, Paris. Appelbaum 113. 10-3/4 x 7-1/2 inches. [43646c] \$250.



32. Jules CHERET (French, 1836-1933) *Grands Magasins aux Buttes Chaumont*. Color lithograph. Printed by Chaix, Paris. 48-1/4 x 34-7/8 inches. [43657c] \$475.



34. José Luis CUEVAS (Mexican, b. 1934) *Al Pincel*. From HOMAGE TO QUEVEDO. Lithograph with hand color. Edition 16/100. Signed. 1969. 22-1/2 x 30 inches. [43775c] \$825.



35. Kenneth CALLAHAN (American [Northwest], 1905-1986) *Dog Scratching*. Ink on paper. Ca. 1952. Signed. 21-1/2 x 29-1/2 inches [42975c] \$1,800.



36. John Edward COSTIGAN (American, 1888-1972) *Bathers*. Etching. Signed. 8-7/8 x 11-7/8 inches. [43393c] \$250.



37. Waldo S. CHASE (American, 1895-1988) *Indian Reservation*. Watercolor on paper. Signed. 1933. 9-7/8 x 13-7/8 inches. [43559c] \$500.



38. William CUMMING (American [Northwest], 1917-2010) *Child with Umbrella*. Graphite drawing. Signed. 1982. 17 x 11 inches. [43379c] \$1,600.



39. William CUMMING (American [Northwest], 1917-2010) *Street Dance Study*. Graphite drawing. Signed. 1982. 17 x 11 inches. [43380c] \$1,600.



40. William CUMMING (American [Northwest], 1917-2010) *Old Man with Cane (Mark Tobey)*. Bronze. Signed on the base. 8 x 2-3/4 x 2-1/2 inches. [43381c] \$6,500.

41. Alan DAVIE (British, 1920-2014) *Foxwatch VIII*. Color lithograph. Edition 31/75. Signed. 1970. 24-5/8 x 32 inches. [43781c] \$750.

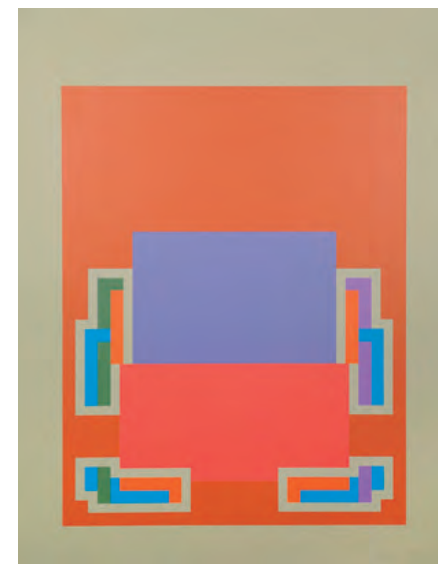


42. Arthur B. DAVIES (American, 1862-1928) *Dancers Under a Pine Tree*. Lithograph. Edition 25. Signed. 1924. Price 94, Czestochaliski 205. 19 x 16 inches. [43628c] \$425.

43. Arthur B. DAVIES (American, 1862-1928) *Olympic Game*. Lithograph. Edition 17/27. Signed. 1920. Printed by Bolton Brown (signature). Price 194, Czestochaliski 124. 12-3/4 x 17-7/8 inches. [43556c] \$600.



44. Alan JONES (British, 1920-2014) *Concerning Marriage No. H*. Color lithograph. Edition 55/75. Signed. 1964. Published by Editions Electo (blindstamp). 22 x 30 inches. [43542c] \$600.



45. Robyn DENNY (British, Born 1930) *Untitled*. From NIGHT SUITE. Color serigraph. Edition 13/70. Signed. 1972. 30-3/4 x 23-7/8 inches. [43544c] \$450.



**46. Louis DOLICE** (American, 1892-1960) *Madison Square Garden from the Corner of Madison Ave & 28th Street, N.Y.C.* Etching and aquatint. Signed, titled, and dated in the plate. 1924. 17-1/2 x 11-7/8 inches. [43372c] \$1,800.



**48. Richard DIEBENKORN** (American, b. 1922) *Woman Seated at a Table*. Lithograph. Edition 26/75. Signed. 1967. 30 x 22-1/2 inches. [43779c] \$8,000.

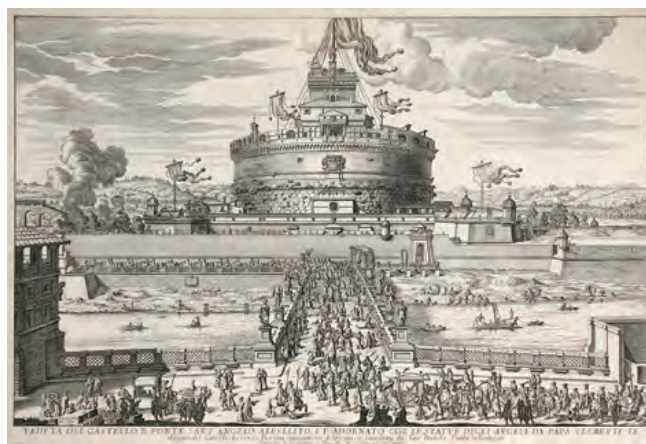


**47. Erik DESMAZIERES** (French, b. 1948) *Le Funambule (The Tightrope Walker)*. Etching on van Gelder Zonen. Edition 35/90. 1974. Printed by LeBlanc. Fitch 12. 18-1/4 x 25-3/4 inches. [43233c] \$850.



**49. Salvador DALÍ** (Spanish, 1904-1989) *St. George and the Dragon*. Etching. Edition 250 + 10 proofs. 1947. Signed. Published by The Print Club of Cleveland. 17-1/2 x 11-1/8 inches. [43839c] \$16,000.

**50. Giovanni B. FALDA** (Italian, 1648-1678) *Veduta Del Castello, e Ponte Sant'angelo, Abbellito, et Adornato con Le Statue Degli Angeli da Papa Clemente IX (View of the Castel and Ponte Sant'Angelo...)*. Etching. 1671. Usual centerfold. Fleur de Lis double oval watermark. Light toning. Creases, mostly at edges of margin. One small spot in image. 18-3/8 x 27 inches. [43336c] \$450.



**51. Kerr EBY** (American, 1890-1946) *Shadows*. From WAR SERIES. Etching, aquatint and drypoint. Signed. 1936. Harbor 109, ii/ii. 10-1/4 x 15 inches. [43601c] \$800.



**52. Alexander DOBKIN** (Italian/American, 1908-1975) *Dancing Girl*. Lithograph. Edition 4/25. Signed. 14 x 12 inches. [43323c] \$150.



**53. Hans ERNI** (Swiss, b. 1909) *Couple with Child*. Lithograph. Edition 96/100. Signed. 1953. Printed by Maison Kratz, Zurich. Cailler 66. 17-1/2 x 23 inches. [43452c] \$600.





**54. Charles Griffin FARR** (American, 1908-1997) *Female Nude*. Pencil on board. Signed. 30 x 20 inches. [43545c] \$850.



**55. Don FREEMAN** (American, 1908-1978) *Lighting Up*. Color lithograph. Proof. Signed, dedicated "To my dear Linda with warmth." 9 x 6 inches. [43346c] \$300.



**56. Emil GANSO** (American, 1895-1941) *Two Nude Picknickers*. Wood engraving. Signed. 3-3/4 x 5 inches. [43391c] \$225.



**58. Philip GALLE** (Netherlandish, 1537-1612) *Rodanus*. From SEA AND RIVER GODS series. Engraving. Name engraved in lower left. 1586. 6-1/2 x 3-3/4 inches. [43444c] \$325.



**57. Emil GANSO** (American, 1895-1941) *Summer Night, Central Park*. Engraving and drypoint. Edition 23/35. Signed. Smith I-162. 9-3/8 x 11-3/4 inches. [43377c] \$450.

**59. Don FREEMAN** (American, 1908-1978) *Census Taker*. Ink and graphite drawing. Stamped signature. 9 x 11-1/2 inches (sheet). [43428c] \$850.



**60. Don FREEMAN** (American, 1908-1978) *Questioned*. Two color lithograph. Street proof. Signed, dedicated "To Linda." 9-1/2 x 7-1/2 inches. [43349c] \$225.



**61. Don FREEMAN** (American, 1908-1978) *Snow Shovelers*. Lithograph. Proof. Signed, dedicated "To my dear Linda." 11 x 9 inches. [43347c] \$225.



**62. Don FREEMAN** (American, 1908-1978) *Getting Booked*. Lithograph. Double sided proof. Signed in pencil and in stone, dedicated "To Linda with love." 1974. 8-3/8 x 10-1/4 inches. [43348c] \$225.





63. (after) **Morris GRAVES** (American [Northwest], 1910-2001) *Still Live / Evening Light*. Photolithograph. Signed by Graves in pencil. Edition 21/120. 1993. 25-1/2 x 44 inches. [32011c] \$8,000.



64. **Arthur William HEINTZELMAN** (American, 1891-1965) *Gondolier*. 4th Etching to be published by the American College Society of Print Collection. Edition 125. Signed. Ca. 1932. Slightly lightstruck within mat window. 9 x 7-1/2 inches. [43569c] \$300.



65. **Elias M. GROSSMAN** (Russian/American, 1898-1947) *The Grand Canal*. Etching with plate tone. Signed and signed in the plate. 1926. Very faint mat burn. 9-1/4 x 11-1/2 inches. [43561c] \$250.



66. **Arthur William HEINTZELMAN** (American, 1891-1965) *Cavalli di San Marco, Venezia (Horses of St. Mark, Venice)*. Drypoint and etching. Edition 65. 1930. 9 x 10-7/8 inches. [29508c] \$375.

(Opposite) 69. **George GROSZ** (German, 1893-1959) *Im Zirkus (Dawson) (At the Circus (Dawson))*. From 10 AUF STEIN GEZEICHNETE BILDCHEN ZUR EWIGEN ERINNERUNG AN DAS FEST AM ROSEN MONTAG 1919. Lithograph. 1919. Only one complete portfolio and one other impression of this subject are known to exist. Signed in the plate. Dücker E50. 9-3/8 x 8 inches. Losses in the corners and backed with Japan. [43782c] \$500.



67. **Friedensreich HUNDERTWASSER** (Austrian, 1928-2000) *White Fog Song of a Mandarin*. Woodcut in 21 colors. Edition of 200. Signed in India ink and numbered. 1992. Cut by Tatsuo Kawashima and printed by Akio Shimizu, Uchida Moto Han, Kyoto. HWG 885A, Koschatzky 105. 15-1/8 x 18-1/2 inches. [43257c] \$7,900.



68. **Friedensreich HUNDERTWASSER** (Austrian, 1928-2000) *Olympische Spiele München 1972 (Olympic Games Munich 1972)*. Silk screen in 21 colors with metal imprints in five colors and an electrostatic application of felt fibrils. Edition of 200 in multiple color variants. Signed. 1971. Printed by Dietz Offizin, Lengmoos. Published by Edition Olympia 1972 GmbH, Munich. Koschatzky 54, HWG 700. 40-1/2 x 25 inches. [43247c] \$7,500.





**70. Stanley William HAYTER**  
(British, 1901-1988) *Meduse*. Color  
viscosity etching. Edition 48/50. Signed.  
1958. 11-5/8 x 14-1/2 inches. [43332c]  
\$1,600.



**71. Karl Albert KASTEN**  
(American, 1916-2010)  
*The Model*. Color etching  
and aquatint. Proof.  
Signed. 1957.  
14-3/4 x 18-3/4 inches.  
[43789c] \$750.



**72. Donald MACLAUGHLAN** (American, 1876-1938) *Landscape*. Etching. Signed, and signed and dated in plate. 1932. Ex. coll. Frieda Lowinson. 5-1/2 x 12 inches. [43419c] \$125.



**73. Horst JANSSEN**  
(German, 1929-1995)  
*Self Portrait for CC Klar*  
*nur 8 strich*. Etching.  
Edition 2437/10,000. 1975.  
8-7/8 x 6-1/2 inches.  
[43312] \$525.



**74. Horst JANSSEN**  
(German, 1929-1995)  
*Self Portrait*. Etching.  
Edition 2404/10,000. 1975.  
8-7/8 x 6-1/2 inches.  
[43313] \$525.



**75. Kaoru KAWANO** (Japanese, 1916-1965) *May*.  
Color woodblock. Stamped. Stamps lower right recto  
and black stamp bottom right verso. 10 x 14-1/2  
inches. [43186c] \$250.



**76. Troy KINNEY** (American, 1871-  
1938) *Impressions of Great Dancers: Anna  
Pavlova and Alexander Volinine*. Color  
drypoint. 5/85 from the colored edition.  
Signed. 1916. 12-1/4 x 9-3/4 inches. [43625c]  
\$600.



**77. Harold E. KEELER** (American, 1905-  
1968) *Mountain Madness*. Wood engraving.  
Edition 10/50. Signed. Very faint tone.  
8-3/4 x 6 inches. [43564c] \$500.



**78. Rockwell KENT** (American, 1882-1971)  
*Greetings from the House of Weyhe (Christmas Card)*.  
Wood engraving on maple. Edition 1500. 1926. Burne  
Jones 12. 4-3/4 x 6-3/8 inches. [43382c] \$160.



**79. Troy KINNEY** (American, 1871-1938) *Indian Dancer (Rashanāra)*. Etching and drypoint. Edition 47/87. Signed. 9 x 12-1/4 inches. [43408c] \$175.



**80. Troy KINNEY** (American, 1871-1938) *Doris Niles*. Etching and drypoint. Edition 135. Signed. 1928. 12-1/2 x 9-3/4 inches. [43407c] \$150.



**81. Oskar KOKOSCHKA** (German, 1886-1980) *Das Gesicht des Weibes (Woman's Face)*. Lithograph. Signed. Initialed in the stone. Watermark present. 8-3/4 x 7-1/4 inches. [43782c] \$3,200.



**82. Käthe KOLLWITZ** (German, 1867-1945) *Mutter mit Kind auf dem Arm*. Etching, aquatint and sandpaper on imitation Japan. Von der Becke Edition (without Berlin-Halensee blindstamp). Plate: 1910; impression: 1946/48 or 1963/65. Knesebeck 114, vii c/vii d. 7-5/8 x 5-1/8 inches. [43314] \$675.



**83. Käthe KOLLWITZ** (German, 1867-1945) *Deutschlands Kinder Hungern! (The Children of Germany are Starving!)* Lithograph. Signed and signed in the stone. Knesebeck 202, iii/iv. Minor cockling in upper left (flattened), expertly repaired tear in upper left corner and puncture 3/4 of an inch beneath pencil signature. Backed with thin Japan for strength. 17 x 11-1/2 inches. [43198] \$2,800.



**84. Jacob LANDAU** (American, 1917-2000) *Tondo*. Wood engraving. Edition 22/50. Signed. 11-1/4 x 11-1/2 inches. [43560c] \$275.



**85. Marie LAURENCIN** (French, 1883-1956) *Deux Femmes et un Chien (Two Women and a Dog)*. Color lithograph on Japon. Signed and signed in the stone. 1945. 13-1/2 x 9-3/4 inches. [43315] \$950.



**86. Haku MAKI** (Japanese, ) *F.P. 5*. Relief print. Edition 11/111. Signed. 6-1/4 x 6-1/4 inches. [43800c] \$750.



**87. Martin LEWIS** (American, 1881-1962) *Wet Night, Route 6*. Drypoint. Edition of 51. Signed and signed in plate. 1933. McCarron 104. 8-7/8 x 14-5/8 inches. [43669c] \$25,000.



**88. Aristide MAILLOL** (French, 1861-1944) *Couples*. Woodcut in sanguine. Ca. 1937. Published by Gonin, Paris. Rewald 66. 6 x 2-3/4 inches. [43472c] \$100.



**89. Aristide MAILLOL** (French, 1861-1944) *Couple*. Illustration for DAPHNIS AND CHLOE by Longus. Woodcut. Proof. 1937. Printed by Gonin, Paris. Published by Zwemmer, London. 5 x 2 inches. [43468c] \$150.

**90. Aristide MAILLOL** (French, 1861-1944) *Pan or Arcady, Sylvanus, and Apollo*. From *ECLOGUES* by Virgil. One of six woodcuts printed by the artist on yellow paper made by Aristide and Gaspar Maillol. The Sylvanus figure inspired by that of August Rodin. Rewald 49. 2-1/4 x 4-1/8 inches. [43469c] \$150.



**91. Aristide MAILLOL** (French, 1861-1944) *Touching*. Illustration for DAPHNIS AND CHLOE by Longus. Woodcut. Proof. 1937. Printed by Gonin, Paris. Published by Zwemmer, London. 4-3/8 x 3-3/8 inches. [43467c] \$125.



**92. Aristide MAILLOL** (French, 1861-1944) *Daphnis and Chloe Embrace One Another*. Illustration for DAPHNIS AND CHLOE by Longus. Woodcut. 1937. Printed by Gonin, Paris. Published by Zwemmer, London. 2-3/4 x 3-3/8 inches. [43466c] \$150.

**93. Jean-François MILLET** (French, 1814-1875) *La Couseuse* (*The Seamstress*). Etching. Delteil 9. 4-1/2 x 2-3/4 inches. [43231c] \$750.



**94. William Evan Charles MORGAN** (British, 1903-1978) *Orvieto*. Drypoint and engraving. Edition 25/50. Signed. 1926. 6-3/4 x 11-1/4 inches. [43373c] \$425.



**95. NORTHWEST VIEWS** *Hotel Fife* (*Tacoma*). A supplemental color lithograph from *THE WEST SHORE* by C.L. Smith. Without the usual inscription. Usual centerfold. Minor tears at left and right sides. 15-5/8 x 20-1/2 inches. [43375c] \$275.



**97. Reginald MARSH** (American, 1898-1954) *Coney Island Beach #1*. Etching. Edition 37/100. Monogram in plate. With wife's blindstamp. Plate: 1939; impression: 1969. Printed for the Whitney Museum. Sasowsky 191. 9-5/8 x 11-3/4 inches. [43555c] \$500.



**98. Reginald MARSH** (American, 1898-1954) *Bathers in the Hudson*. Engraving. Edition 31/100. With wife's blindstamp. Plate: 1941; impression 1969. Printed for the Whitney Museum. Sasowsky 213. 7-3/4 x 11-3/4 inches. [43440c] \$425.

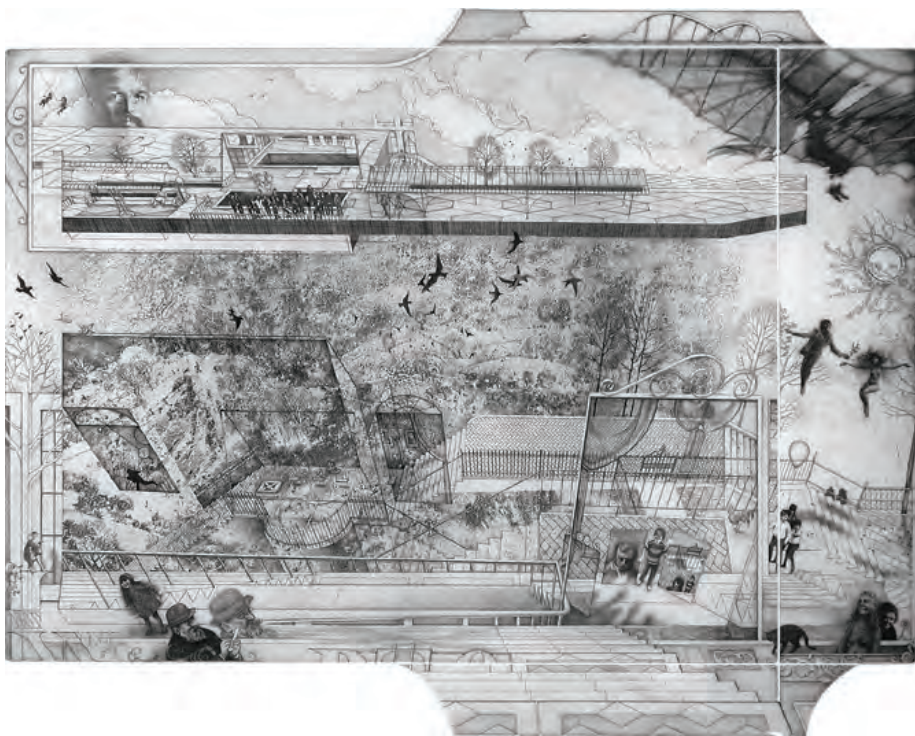


**96. André MASSON** (French, 1896-1988) *Visage*. Color lithograph on Arches. Edition 150/200. Signed. 1960. 23 x 17-1/2 inches. [43160c] \$650.





99. Peter MILTON (American, b. 1930) *Passage IV*. Mixed etching. State proof #22, 6/6. Signed. 1973. 25 x 35-3/4 inches. [43236c] \$2,800.



100. Peter MILTON (American, b. 1930) *A Sky Blue Life*. Mixed intaglio. Edition 106/160. Signed. 1976. 25-1/2 x 32-1/2 inches. [43232c] \$4,000.



101. Leopoldo MENDEZ (Mexican, 1903-1969) *El Carrusel (The Carousel)*. Linocut. Signed. 1949. Minor soiling and kraft tape patch at outer margin. 11-3/4 x 16-3/8 inches. [43367c] \$850.



102. Peter MILTON (American, b. 1930) *Daylilies*. Mixed etching. Edition 68/160. Signed. 1975. 20 x 30 inches. [43238c] P.O.R.



**103. Barry MOSER** (American, b. 1940) *Through the Looking-glass and What Alice Found There*. Artist book illustrated with original wood engravings. Deluxe edition with a separate suite of signed proofs of the wood engraving images from the book, all in a clamshell portfolio. Edition 26/350. 1982. Book signed, and the separate suite of proofs all signed individually. 1982. Dedicated "For Joan Lees". Printed by Pennyroyal Press, MA. Box: 17-1/2 x 11-3/4 x 3 inches; book: 16-3/4 x 11-1/8 x 1-1/4 inches. [43358c] \$3,000.



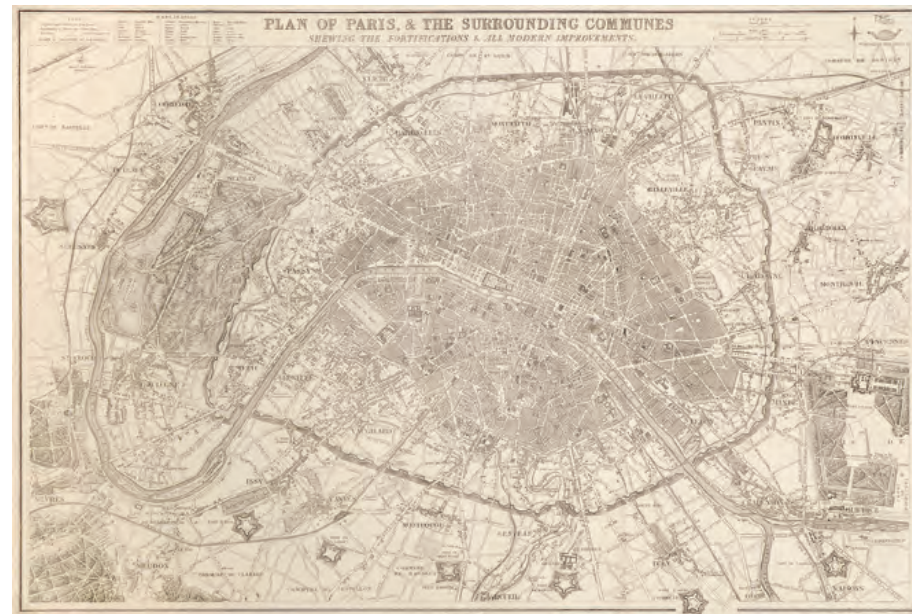
**104. Robert MOTHERWELL** (American, 1915-1991) *Untitled*. Fourth image from DUTCH LINEN SUITE. Lift-ground etching. Edition 15/25. Signed. 1974. Sheet: ca. 30 x 25 inches. [43780c] \$4,200.



**105. Emil ORLIK** (German, 1870-1932) *Schauspielerbildnis aus der Büchse der Pandora*. Lithograph on laid paper. Edition 100. 1918. Signed and with a dedication to Erich Simon. 8 x 7 inches. [43784c] \$300.



**106. Mayumi ODA** (Japanese, b. 1941) *Bell Telephone*. Color woodcut. Edition 12/50. Signed. 1976. 22 x 16 inches. [43234c] \$650.



**107. Benjamin REES DAVIES** (British, active 1st half of 19th century) *Plan of Paris and the Surrounding Communes Shewing the Fortifications...* From for the WEEKLY DISPATCH ATLAS. Lithograph on double page. 1860. Published by Day & Son. 16-1/8 x 24-3/8 inches. [42960c] \$385.



**108. Manuel ORAZI** (Italian, 1860-1934) *Thais*. Color lithograph. Signed in the stone. 1895. Printed by Lemerrier, Paris. Published by Menestrel & Heugel, Paris. Unexamined out of frame. 39-7/8 x 13-1/4 inches. [43636c] \$950. Framed.



**109. Wendy ORVILLE** (American [Northwest], b. 1962) *Port Blakeley*. Monotype. Unique. 8 x 9 inches. [46804] \$600. Framed.



**110. Martin PETERSEN** (Danish/American, 1870-1943) *Five o'Clock at the Steel Works*. Etching. Trial print #2. Initialed lower right. 1940. Watermark. 8 x 7 inches. [43522c] \$325.



**111. Francis Luis MORA** (Mexican/American, 1874-1940) *Boy Eating Fruit*. Drypoint. Signed. Plate not beveled; probably an early proof. 6 x 3-7/8 inches. [43567c] \$375.



**112. Pablo PICASSO** (Spanish, 1881-1973) *The Fawn's Dance*. Lithograph on zinc. Edition 1000. Signed. 1957. Published to benefit "Le Patriote" newspaper in Nice. Mourlot 291. Provenance: F. Roten Galleries, Baltimore, MD. 16 x 20-3/4 inches. [43333c] \$1,600.



**113. Wendy ORVILLE** (American [Northwest], b. 1962) *Fir #5*. Monotype. Unique. 12 x 9 inches. [46803] \$800. Framed.



**114. Emmy Lou PACKARD** (American, 1914-1998) *Tide Pool*. Color woodcut. Signed. Stained verso. 14 x 10 inches. [42266c] \$400.



**115. Reinhold H. PALENSKE** (American, 1884-1954) *The Outlaw*. Drypoint. Signed. 1936. 10 x 7-7/8 inches. [43403c] \$375.



**116. Angelo PINTO** (Italian/American, 1908-1994) *Train Traveler*. Wood engraving. 6-7/8 x 5-3/8 inches. [43398c] \$160.



**117. Giovanni Battista PIRANESI** (Italian, 1720-1778) *Vedute di Piazza Navona sopra le Rovine del Circo Agonale* (View of the Piazza Navona above the Ruins of the Circo Agonale). From the VEDUTE. Etching. 1773. Hind 108, i/iv. 18-1/2 x 27-7/8 inches. [43759c] \$4,600.



**118. Giovanni Battista PIRANESI** (Italian, 1720-1778) *Villa Panfilii* (Villa Doria-Pamphilij). From the VEDUTE. Etching. 1776. Hind 124, i/iii. 19-1/8 x 27-5/8 inches. [43335c] \$3,800.



**119. Giovanni Battista PIRANESI** (Italian, 1720-1778) *Vedute del Ponte Salario*. From the VEDUTE. Etching. 1754. Hind 31, ii/v. 16 x 24-3/4 inches. [43760c] \$3,600.



**120. Giovanni B. PIRANESI** (Italian, 1720-1778) *Veduta Degli Avanzi Superiori Delle Terme di Diocleziano a Sta. Maria degli Angeli* (View of the Uppermost Remains of the Baths of Diocletian at Santa Maria degli Angeli). Etching. 1774. Hind 115, ii/iii. Focillon 883. 18-1/8 x 27-1/2 inches. [43543c] \$1,500.



**121. Giovanni Battista PIRANESI** (Italian, 1720-1778) *Vedute Sul Monte Quirinale del Palazzo dell'Eccellentissima Casa Barberini* (View on the Quirinal Hill of the Edifice of the Most Excellent House of the Barberini). From the VEDUTE. Etching. Ca. 1750. Hind 25, ii/v; Focillon 740. 16 x 24-1/4 inches. [43188c] \$1,200.

**122. Odilon REDON** (French, 1840-1916) *Le Diable*. Plate 18 from the TENTATION DE SAINT ANTOINE, 3ème serie. Lithograph. Unused proof on china paper. 1937. Published by Vollard. M. 151. Provenance: F. Roten Galelries, Baltimore, MD. 12-1/4 x 9-7/8 inches. [43354c] \$750.



**123. Rudy POZZATTI** (American, b. 1925) *Memento Mori*. Etching. Edition 34/40. Signed. 1968. 2 x 2 inches. [43229c] \$100.

**124. Rudy POZZATTI** (American, b. 1925) *Jury*. Etching. Edition 49/50. Signed. 1 x 3-3/4 inches. [43225c] \$135.



**125. Rudy POZZATTI** (American, b. 1925) *Papal*. Mixed technique etching. Edition 9/25. Signed. Very lightly toned. 9-3/4 x 4-7/8 inches. [43223c] \$160.

**126. Rudy POZZATTI** (American, b. 1925) *Four Kings*. Mixed technique etching. Edition AP. Signed. 1961. 23-1/2 x 17-3/4 inches. [43235c] \$1,800.







**127. Carol REMSHARD** (German, 1678-1735) *Mittlere Loggia des Irrgartens, so rechter hand in dem Fürstliche Lustgarten liegen kan* (Middle Section of the Maze, the Righthand Side of the Princely Pleasure-garden). From *BAUMEISTER FÜRSTLICHER ODER ARCHITECTURA CIVILIS (PRINCELY ARCHITECT OR CIVIL ARCHITECTURE)* by Paul Decker the Elder. Engraving, 1711. Published by Jeremias Wolff. 12 x 17 inches. [43374c] \$425.



**128. Bob RUSSELL** (American [Northwest], d. 1944) *The Red Dress*. Watercolor on board. Edition. Ca. 1940s. 5-1/2 x 14 inches. [43639c] \$425.



**130. Pierre-Auguste RENOIR** (French, 1841-1919) *Sur la plage, à Berneval* (On the Beach at Berneval). Etching. Signed in the plate. Plate: 1892; impression: after 1923. Stella 5, iii. 5-1/2 x 3-3/4 inches. [43211c] \$425.



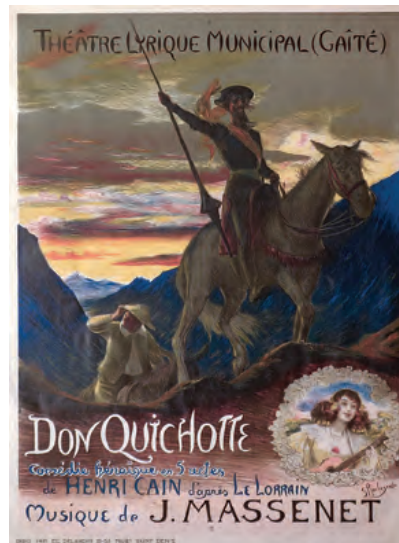
**129. Mina PULSIFER** (American, 1899-1989) *Square Dance*. Lithograph. Edition 9/15. Signed. 12 x 9 inches. [43383c] \$325.



**131. Mina PULSIFER** (American, 1899-1989) *Vendors*. Lithograph. Signed. Monogram blindstamp below bottom left corner. 14 x 10 inches. [43396c] \$250.



**132. Gwendolen RAVERAT** (English, 1885-1957) *The Dead Christ*. Wood engraving, 1913. Narrow margins. Tipped at four corners to rag board backing. One very small mark in page in image. Black 4, SN 47. 4 x 1-7/8 inches. [43480c] \$300.



**135. Georges ROCHEGROSSE** (French, 1859-1938) *Don Quichotte*. Color lithograph. Signed in the stone. 1910. Printed and published by Ed. Delanchy, Paris. Unexamined out of frame. 35-1/2 x 26-3/4 inches. [43634c] \$650. Framed.



**133. Georges SCHREIBER** (Belgian/American, 1904-1977) *Noon*. Lithograph. Signed. 1940. 9-3/8 x 13 inches. [43387c] \$275.



**134. Louis Conrad ROSENBERG** (American, 1890-1983) *Torre del Oro (Seville)*. Drypoint. Edition 150. Signed. 1925. 6-3/8 x 11-3/4 inches. [43368c] \$325.



**136. Georges ROCHEGROSSE** (French, 1859-1938) *Antar*. Color lithograph. Signed in the stone. 1921. Published by Maquet, Paris. Unexamined out of frame. 30-1/2 x 23-1/4 inches. [43635c] \$600. Framed.



**137. Kiyoshi SAITO** (Japanese, 1907-1997)  
*Girl in the Snow*. From CHILDREN IN AIZU.  
Color woodblock.  
Signed. ca. 1947. Soft  
creases. 15-3/4 x 10-  
3/4 inches. [43241]  
\$325.



**138. Kiyoshi SAITO** (Japanese, 1907-1997)  
*Shoveling Snow*. From CHILDREN IN AIZU.  
Color woodblock.  
Signed. 1947. Soft  
creases. 14 x 9-11/16  
inches. [43242] \$325.



**139. Mable A. ROYDS** (Scottish, 1874-1941)  
*Jar Carriers*. Color woodcut. Signed in red  
lower left. Unexamined out of frame. 7-1/2 x  
8-1/2 inches. [43631c] \$400. Framed.



**140. Mable A. ROYDS** (Scottish,  
1874-1941) *Turbaned Man and Three  
Women with Baskets*. Color woodcut.  
Signed. 8-7/8 x 8-3/8 inches. [43454c]  
\$375.



**141. Mable A. ROYDS** (Scottish, 1874-1941)  
*Angels Appearing to the Shepherds*. Color  
woodblock. Signed. A few foxing spots verso.  
1-1/4 x 12-7/8 inches. [43485c] \$475.



**142. Mable A. ROYDS** (Scottish, 1874-1941)  
*Forge*. Color woodcut. Signed. Unexamined  
out of frame. 8 x 8-3/4 inches. [43630c] \$450.  
Framed.



**143. Kiyoshi SAITO** (Japanese, 1907-  
1997) *Child in Aizu*. Color woodblock.  
Signed. 15 x 10 inches. [43185c] \$350.



**146. Colin SEE-PAYNTON** (British,  
b. 1946) *Great Horned Owl*. Wood  
engraving. Edition of 75. Signed. 12-1/2 x  
6 inches. [46280] \$600.



**144. Fritz SCHOLDER** (American, b. 1937)  
*Embrace*. Color lithograph. Edition 13/50. Signed.  
11-1/2 x 9-3/4 inches. [32283] \$275.



**145. Carl Max SCHULTHEISS** (German/American,  
1885-1961) *The Flight into Egypt*. Engraving. Signed.  
1945. A subscription print for the Society of American  
Etchers. Watermark present. 6-1/4 x 8-1/4 inches.  
[43400c] \$175.



**147. Colin SEE-PAYNTON** (British, b. 1946) *Hare  
and Moon Shadows*. Wood engraving. Edition of 75.  
Signed. 7 x 5 inches. [46274] \$395.



148. Roger SHIMOMURA (American, b. 1939) *Seven Views of a Japanese Restaurant: #1*. Serigraph. Edition 30. Signed. 1977. 19 x 22 inches. [43541c] \$900.

149. Dick SWIFT (American, 1918-2010) *The Family*. Viscosity color etching. Edition 26/55. Signed. 1975. 9-1/4 x 4 inches. [43220c] \$425.



151. Mark TOBEY (American, 1890-1976) *Composition with Lines*. Color lithograph. Edition 20/150. Signed. 1967. 6-5/8 x 4-3/4 inches. [43318] \$825.



150. David A. SIQUEIROS (Mexican, 1896-1974) *Mascara (Mask)*. Color lithograph. Edition 250. Signed. Ca. 1960. 22-1/2 x 18-3/4 inches. [43351c] \$600.



154. David A. SIQUEIROS (Mexican, 1896-1974) *Christ*. Color lithograph. Signed. 1965. 21-1/8 x 15-1/2 inches. [43350c] \$600.



152. Theophile Alex STEINLEN (Swiss/French, 1859-1923) *Le Rêve (The Dream)*. Color lithograph. Signed in the stone. 1890. Printed by Gillot. Published by G. Hartmann & Co., Paris. 30-3/4 x 23-1/2 inches. [43637c] \$850.



153. Théodore TOBIASSE (French, 1927-2012) *Moi et la Sulamite*. Color lithograph. Edition 102/150. Signed. Unexamined out of frame. 19-1/2 x 25-3/4 inches. [43633c] \$450. Framed.



155. Théodore TOBIASSE (French, 1927-2012) *David et Bethsabée*. Color lithograph and carborundum. Edition 47/125. Signed. 1984. 39 x 27 inches. [43360c] \$1,200. Framed.



**156. Theophile Alex STEINLEN** (Swiss/French, 1859-1923) *Le Journal Publie – Le Coupable*. From *MAÎTRES DE L’AFFICHE*. Color lithograph. Signed in the stone. 1896. Printed by Chaix, Paris. Appelbaum 134. 12-1/2 x 7-1/4 inches. [43652c] \$175.

**157. Theophile Alex STEINLEN** (Swiss/French, 1859-1923) *Hellé*. From *MAÎTRES DE L’AFFICHE*. Color lithograph. Signed in the stone. 1896. Printed by Chaix, Paris. Appelbaum 34. 10-3/4 x 8-1/8 inches. [43641c] \$225.



**158. Frank STACK** (American, b. 1937) *Nude with Plants*. Lithograph. Edition 3/40. Signed. Published by Lakeside. 8-1/2 x 9-3/4 inches. [43219c] \$150.



**159. Frank STACK** (American, b. 1937) *Mirror Nude*. Lithograph. Edition 27/50. Signed. Published by Lakeside. 11-7/8 x 8 inches. [43326c] \$150.



**160. Raphael SOYER** (American, 1899-1987) *Nude in Interior*. Lithograph. Signed. 1954. Published by AAA. Cole 76. 12-1/4 x 9-1/4 inches. [43218c] \$750.



**161. Frank STACK** (American, b. 1937) *Nude on Patterns*. Intaglio. Edition 19/100. Signed. Light foxing throughout. 7 x 4-7/8 inches. [43213c] \$125.



**162. Ronald SEARLE** (British, 1920-2011) *Ah, Les Beaux Jours*. Color lithograph. Signed. Edition 99. 1970. 13-5/8 x 9-1/2 inches. [43807c] \$600.



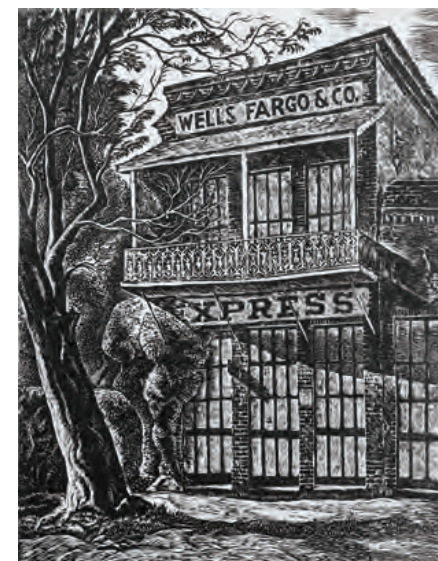
**164. Yngve Edward SODERBERG** (American, 1896-1971) *Longing for the Sea*. Etching. Edition 110. Signed. 8-7/8 x 5-7/8 inches. [43399c] \$165.



**165. Charles SURENDORF** (American, 1906-1979) *Waterfront Pape'ete*. Linocut. Edition 12/18. Signed. 10 x 13-1/4 inches. [43386c] \$485.



**163. Hideo TAKEDA** (Japanese, b. 1948) *Two Suikoden in Armor*. Color serigraph. Edition 26/100. Signed. 1975. Published by artist. Unexamined out of frame. 15-1/2 x 19-1/2 inches. [43632c] \$850.



**166. Charles SURENDORF** (American, 1906-1979) *Wells Fargo Building - Columbia*. Linocut. Edition 52/100. Signed. 13 x 10-1/8 inches. [43384c] \$325.



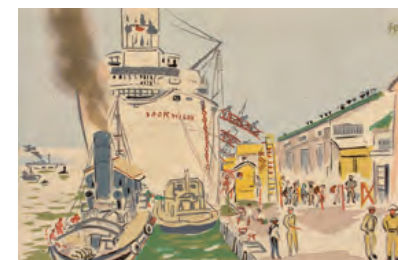
**167. James Jacques Joseph TISSOT** (French, 1836-1902) *L'Enfant Prodigique (The Parable of the Prodigal Son)*. Complete set of title page and 4 images. Etching. Edition 400. 1882. Beraldi 48-52, ii/ii; Wentworth 57-61, ii/ii. 12-1/4 x 14-3/4 inches. [43317] \$1,500.



**168. James Jacques Joseph TISSOT** (French, 1836-1902) *Sa Première Culottes (His First Breeches)*. Drypoint. Edition 100. Signed with red monogram seal. 1880. Beraldi 42, Wentworth 51, ii/ii. 3 foxing spots in margin. 7 x 3 inches. [43316] \$275.



**170. George TSUTAKAWA** (American [Northwestern], 1910-1997) *Harvesters*. Linocut. Signed. 1932. 6-7/8 x 8 inches. [43528c] \$375.



**169. UNKNOWN** (Japanese, active 1st half of 20th century) *Woodcut Print Sketches of G.I. in New Japan: Sanjo Bridge, Kyoto; Snowy Night Hibiya Junction, Kyoto; Japanese Coming Home, Hakata Pier*. Woodcut. Late 1940s. Printed by Kyoto Hangain. Published by Miho Shobo, Hakata. 3-1/8 x 5-1/8 inches. [43613c] \$375.



**171. Shoen UEMURA** (Japanese, 1875-1949) *Hotaru (Firefly)*. Color woodblock. Dai ōban yoko-e. [43848c] \$850. Framed.



**172. Jan VAN DE VELDE II** (Netherlandish, 1593-1641) *Die Weisse Kuh (The White Cow)*. Etching. 1622. Partial watermark. 6-3/8 x 8-7/8 inches. [43309] \$2,500.

**173. Beth VAN HOESEN** (American, 1926-2010) *No. 18. (Mark Adams)*. From THE NUDE MAN. 1965. Edition 50. Signed. Printed by Kathan Brown. Published by Crown Point Press, Berkeley. 8-5/8 x 4 inches. [43385c] \$425.

**174. (Opposite right) Brook WARING** (American [California], 1905-1993) *Boxers*. Lithograph on BFK Rives. Signed in stone. 1935. Estate of Paul Roeher. 11-7/8 x 14-1/4 inches. [43577c] \$300.



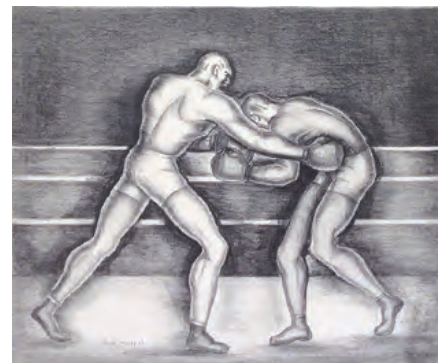
**175. Rembrandt Harmenszoon VAN RIJN** (Netherlandish, 1606-1669) *Presentation in the Temple*. Etching. 1630. 1/4 inch margins. Hind 18, ii, B. 51. Provenance: The Vincent Price Collection. 4-5/8 x 3-1/8 inches. [43230c] \$3,600.



**176. Stan WASHBURN** (American, b. 1943) *It Seemed So To Me*. Etching. Edition 3/50. Signed. 1974. 15-3/4 x 11-5/8 inches. [43565c] \$300.



**177. Rembrandt Harmenszoon VAN RIJN** (Netherlandish, 1606-1669) *Nude Man Seated on the Ground*. Etching. Signed and dated in the plate. Plate: 1646; impression: 19th century, probably pulled by Bernard. Scratch on 2nd finger of left hand nearly gone. Usticke 196, iv/iv; Hind 221; BB. 46-c. 3-7/8 x 6-5/8 inches. [43224c] \$2,800.



**178. Adrian VAN SUCHTELEN** (Indonesian/American, b. 1941) *Cherries*. Etching and aquatint. Edition 9/25/ Signed. 1949. Toned. 9-3/4 x 4-7/8 inches. [43222c] \$375.



**179. Adrian VAN SUCHTELEN** (Indonesian/American, b. 1941) *Three Lillies*. Etching. Edition 21/50. Signed. Printed by Robert Townsend (chop) and published by Lakeside Press (chop). 3-1/4 x 8-3/4 inches. [43221c] \$325.



**180. Adrian VAN SUCHTELEN** (Indonesian/American, b. 1941) *Perfume Delight*. Mezzotint. edition 3/50. Signed. 1981. 4-1/2 x 5-3/4 inches. [43328c] \$325.



**181. Joseph P. VORST** (German, 1897-1947) *Pitching Hay*. Color lithograph. Signed. 1938. Printed by Albert Carmen (chop). 12 x 9 inches. [43425c] \$250.



**182. Jacques VILLON** (French, 1875-1963) Illustration for Swinburne's text for LAUS VENERIS. Etching on Japon Imperial. Total edition 100 (special edition of 15 on Japon Imperial). 1956. Collaboration with Fiorini. Printed by G. Leblanc. Published by Manuel Bruker, Paris. 8-1/4 x 5-3/8 inches. [43484c] \$300.



**183. Lynd WARD** (American, 1905-1985) *Day of the Hawk*. Wood engraving. Edition 80. Signed. 1969. Presentation print for the Albany Print Club. 12 x 9 inches. Full margins. [43530c] \$425.



**184. Ludwig VON HOFMANN** (German, 1861-1945) *Reife Fruchte (Ripe Fruit)*. Color lithograph. Monogram in stone. 1916. In sleeve of Freunde Graphischekunst — Leipzig [IV. 4]. 16-3/8 x 12-3/8 inches. [43495c] \$100.



**185. Beth VAN HOESEN** (American, 1926-2010) *The Nap*. Drypoint. Edition 33/50. Signed. 1961. 17-3/4 x 19-1/2 inches. [43788c] \$1,800.



**186. John W. J. WINKLER** (Austrian/American, 1894-1979) *Rambling Tenements on T.H. (Telegraph Hill)*. Drypoint on Rives. Signed. 12-3/8 x 8 inches. [43534c] \$375.



**187. Charles Banks WILSON** (American, 1918-2013) *Smiling Cowboy*. Lithograph. Edition 100. Signed. 1979. 12-3/8 x 8 inches. [43533c] \$650.

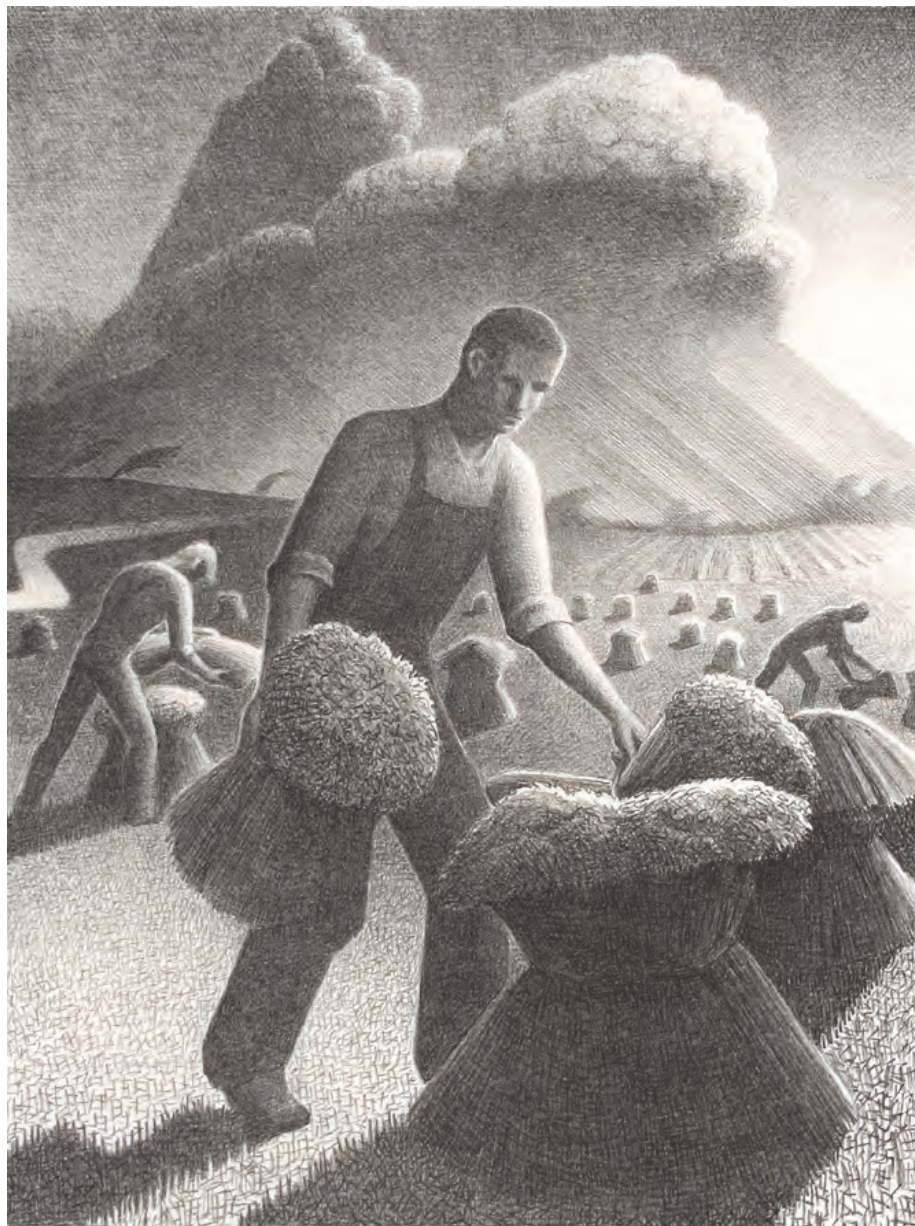
**188. John W. J. WINKLER** (Austrian/American, 1894-1979) *Chinese Drugstore - Plate C*. Etching. Signed. 13-7/8 x 9-1/4 inches. Lightstruck. [43574c] \$375.



**189. Charles Banks WILSON** (American, 1918-2013) *Skinny Dip*. Lithograph. Signed. Initialed in the stone. 1987. 11 x 13-7/8 inches. [43430c] \$450.



**190. Frank N. WILCOX** (American 1887-1964) *Re-Union*. Etching. 1932. Signed in pencil. Edition 250. Print-A-Month publication No. 4 8 x 10 inches. [327581] \$225.



**191. Grant WOOD** (American, 1891-1942) *Approaching Storm*. Lithograph. Edition 250. Signed. 1940. Published by AAA. Cole 19. 11-3/4 x 9 inches. [43358c] \$4,000.



**192. Herman Armour WEBSTER** (American, 1878-1970) *Canaregio, Venice*. Drypoint. Signed. Ca. 1920. 6-1/2 x 7-7/8 inches. [43448c] \$250.



**193. Nele ZIRNITE** (Latvian, b. 1959) *Plusma (Gust)*. Intaglio. Edition 42/50. Signed. 1989. Mat burned and toned. 8-3/4 x 9-1/2 inches. [43359c] \$460.

## CATALOG LIST NO. 90 - Spring 2014

**CONTACT:** Dillon Gisch (206) 624-6700 or [dillon@davidsongalleries.com](mailto:dillon@davidsongalleries.com)

All works are subject to prior sale. All items are guaranteed as described. A certificate of authenticity is available upon request. Please contact the gallery with questions or to discuss a work in detail. Dimensions are given as inches, height precedes width. Orders are shipped promptly upon receipt of full payment. Works are normally shipped insured via U. S. Postal Service unless other arrangements are specified. Shipping charges vary and are dependent on size and value of items ordered. Washington State residents must add 9.5% sales tax. Items may be sent "on approval" beginning two weeks after initial catalog release. Works may be returned to the gallery for any reason within two weeks of purchase for a full refund less shipping. Returned works should be securely packed and fully insured.

Please inform the gallery of any special collecting interests. Davidson Galleries is always willing to consider purchasing or consigning fine original prints either individually or as entire collections.

Davidson Galleries is a charter member of the INTERNATIONAL FINE PRINT DEALERS ASSOCIATION and is committed to its strict ethical standards. 

**DAVIDSON GALLERIES • [www.davidsongalleries.com](http://www.davidsongalleries.com)**  
313 Occidental Avenue South, Seattle, WA 98104 • Hours: Tuesday-Saturday 10am-5:30pm



### DOWNLOADABLE CATALOGS AVAILABLE

As part of our commitment to produce less waste, Davidson Galleries is proud to offer our catalogs as **free downloadable PDFs** through [DAVIDSONGALLERIES.COM](http://DAVIDSONGALLERIES.COM). Simply visit the Publications page on the website to download.

If you would prefer to continue receiving our semi-annual **printed catalogs by mail**, annual subscriptions are available for **\$12**, deductible from your first catalog purchase. Please contact the gallery for details.



Scan this QR code with your smart phone to join our monthly email newsletter list!

**FRONT COVER: 194. Friedensreich HUNDERTWASSER** (Austrian, 1928-2000) *Tennos Fly with Hats*. Japanese woodcut in 22 colors. Edition of 300 in 2 color variants. Signed and numbered with Japanese seals. 1985. Cut by Tatsuo Kawashima, Uchida Moto Han, Kyoto. Printed by Akio Shimizu, Uchida Moto Han, Kyoto. HWG 844A, Koschatzky 89. 21 x 15-3/4 inches. [43255c] \$6,900.



# DAVIDSON GALLERIES

313 OCCIDENTAL AVE S • SEATTLE, WASHINGTON 98104  
[WWW.DAVIDSONGALLERIES.COM](http://WWW.DAVIDSONGALLERIES.COM)

CHANGE SERVICE REQUESTED

CATALOG LIST NO. 90 - SPRING 2014



195. **Don FREEMAN** (American, 1908-1978). *Beach Scene*. For PARSONS SUNDAY (stamp bottom margin). Ink on paper. Signed in ink. 7 x 15 inches (sheet). [43429c] \$950.

\$5.00