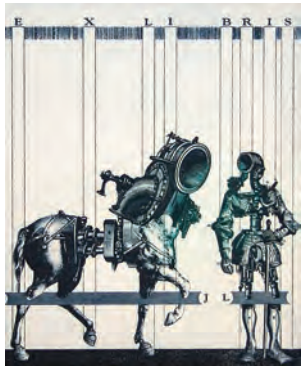




DAVIDSON GALLERIES

FALL 2013 CATALOG

Original Antique, Modern & Contemporary Works



1-C. Mariko ANDO (Japanese, b. 1969) *Never Nest*. Etching with chine collé and hand coloring. 2012. Edition 20. Signed. 4 x 6-1/2 inches. \$200.

2-C. Peter AUGUSTOVIČ (Czech, contemporary) *Nová Identita II (New Identity II)* (*Ex Libris*). Intaglio. AP. Signed. 2010. 5-1/2 x 4 inches. [45846] \$150.



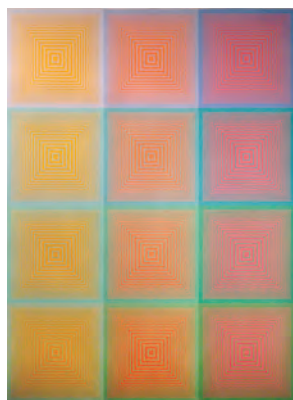
3-A. Clarence W. ANDERSON (American, 1891-1971) *Rodeo Sketches*. Lithograph. Signed. Published by AAA. 8-1/2 x 14-1/4 inches. [42905] \$120.



4-C. Mariko ANDO (Japanese, b. 1969) *Letter*. Etching with chine collé and hand coloring. 2012. Edition 20. Signed. 4 inch diameter. \$170.



5-A. Jean Baptiste Bourguignon ANVILLE (French, 1697-1782) *America Septentrionalis*. Engraving with outline color. 1756. Published by Homann Erben, Nuremberg. 18-1/2 x 20-1/2 inches. [42915c] \$1,200.



6-A. Richard ANUSZKIEWICZ (American, b. 1930) *Image #7* for THE INWARD EYE. Ten Serigraphs to William Blake's Text. Serigraph. Total edition 510. 1970. Printed by Editions Domberger, Stuttgart. Published by Aquarius Press, Baltimore, MD. 25-1/4 x 19-3/4 inches. [30309c] \$175.



7-A. (after) John James AUDUBON (American, 1785-1851) *Fox Squirrel* (Part 14, Plate LXVIII). From *The Viviparous Quadrupeds of North America*. Hand-colored lithograph. 1843-48. Published by J.T. Bowen. 17-6/8 x 26 inches. [42885c] \$3,200.



8-A. (after) John James AUDUBON (American, 1785-1851) *Snowy Heron* (Part 75, Plate 374). From *The Birds of America from Drawings Made in the United States and Its Territories*. Hand-colored lithograph. 1841. Published by J.T. Bowen. 7-5/8 x 5-1/4 inches. [42706c] \$2,500.



9-A. (after) John James AUDUBON (American, 1785-1851) *Common Osprey Fish Hawk* (Part 3, Plate 15). From *The Birds of America from Drawings Made in the United States and Its Territories*. Hand-colored lithograph. 1841. Published by J.T. Bowen. Binding holes and glue residue in outer edge of left margin. Offsetting verso, very faintly visible recto. 7-5/8 x 5-1/4 inches. [42873c] \$1,200.



10-A. Ernst BARLACH (German, 1870-1938) *Rasender Barbar (Raging Barbarian)*. Lithograph on laid paper. Signed. 1916/7. Schult 91. 11-7/8 x 15-3/4 inches. [42991c] \$5,000.



11-A. John Taylor ARMS (American, 1887-1953) *A Tower of Saint Front, Périgueux*. Image 22 from FRENCH CHURCH SERIES. Etching. Edition 100. Signed. Initialed and dated in plate. 1928. Printed by Frederick Reynolds. Fletcher 212. Light soiling. Skinning verso in top margin. 12 x 5-1/16 inches. [43095c] \$200.



13-A. John Taylor ARMS (American, 1887-1953) *Santa Maria Major (sic)*, *Ronda*. Image 13 from SPANISH CHURCH SERIES. Etching. Signed. Numbered II. 1935. Commissioned by American College Society of Print Collectors. Fletcher 288. 8-1/8 x 5-3/8 inches. [42986] \$400.



12-A. Max BECKMANN (German, 1884-1950) *Eislauf (Ice Skating)*. Lithograph on laid paper. Signed. 1922. Hofmaier 223 B/c. 16 x 9-1/4 inches. [43006c] \$5,700.



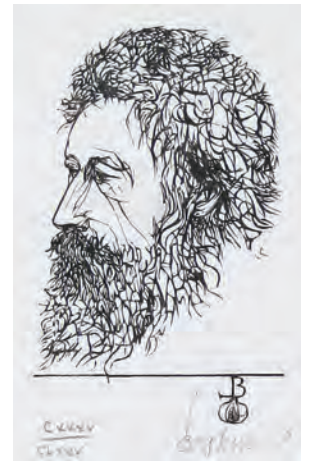
14-A. Leonard BASKIN (American, 1922-2000) *Spies on His Enemies/Crow*. Lithograph on BFK Rives. Edition 65/160. Signed. 1972. Fern 614. 32 x 22-1/2 inches. [43142c] \$850.



15-A. Leonard BASKIN (American, 1922-2000) *Charles Meryon*. From LAUS PICTORUM, PICTURES OF NINETEENTH CENTURY ARTISTS. Wood engraving. Edition CLXXXV/CLXXXV. 1969. Fern 542. Published by the Gehenna Press, Northampton, MA. 4-1/2 x 2-3/8 inches. [43147c] \$275.



16-A. Leonard BASKIN (American, 1922-2000) *Thomas Eakins*. From LAUS PICTORUM. Wood engraving. Signed. Block: 1966; impression: 1969. Fern 496. 2-1/4 x 1-1/3 inches. [43143c] \$225.



17-A. Leonard BASKIN (American, 1922-2000) *William Morris*. From LAUS PICTORUM. Wood engraving. Signed. 1960. Fern 416. 3 3/4 x 2 3/8 inches. [43144c] \$325.



18-A. Leonard BASKIN (American, 1922-2000) *Embattled Youth*. Etching on Arches. Edition 125. Signed. 1978. Published by Horn Editions & Kennedy Graphics. Fern 670. 28-1/4 x 19-1/2 inches. [43141c] \$600.



19-A. George BELLOWS (American, 1882-1925) *New Society Dinner-Card* for the annual dinner of the "New Society of Artists". Lithograph. Edition unknown. Initialed GB in stone. 1923. Beer 127. 7-1/2 x 5-3/4 inches. [43120c] \$500.



20-C. Paula BARRAGAN (Ecuadorian, b. 1963) *Message in a Bottle*. Intaglio. EV 1/60. Signed. 2013. 10 x 12 inches. \$390.



21-C. Paula BARRAGAN (Ecuadorian, b. 1963) *El Celo di mi Casa*. Intaglio. EV 1/60. Signed. 2013. 10 x 12 inches. \$390.



23-P. Susan BENNERSTROM (American, b. 1949) *Swan*. Oil on canvas. Signed, bottom right. 2013. 44 x 44 inches. \$7,500.



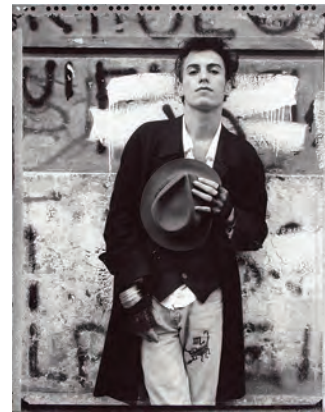
22-A. Jan BOTH (Dutch, 1610-1652) *The Ferry, View on the Tiber*. Etching. Thread margins. One tiny spot in the sky, top right. Unidentified watermark. 7-1/2 x 9-3/4 inches. [43084c] \$300.



24-A. Jean Jacques BOISSEAU (French, 1736-1810) *The Woodland Stream*. Plate 3. Engraving. B. 20 V/V. 6-5/8 x 9-3/8 inches. [29170c] \$225.



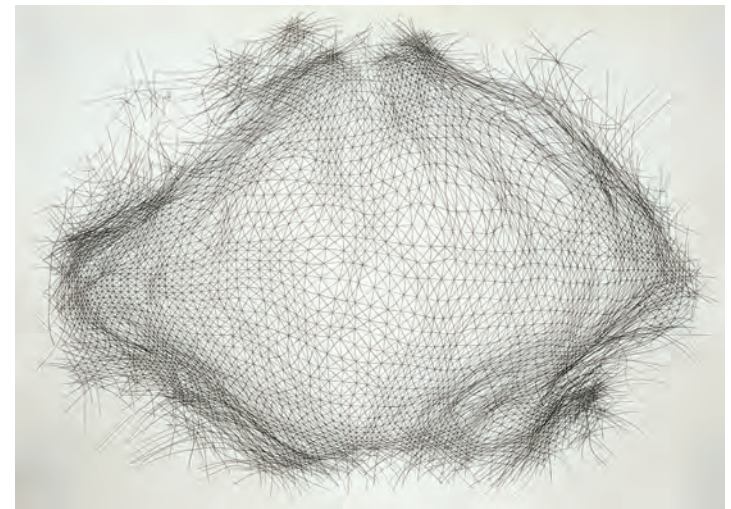
25-P. Susan BENNERSTROM (American, b. 1949) *Red Gate*. Oil on canvas. Signed, bottom right. 2013. 44 x 44 inches. \$7,500.



26-P. Marsha BURNS (American, b. 1945) *Alessandro, Rome*. Silver gelatin print. Signed, titled and dated in ink. 1987. 20 x 16 inches. \$1,500.



27-P. Marsha BURNS (American, b. 1945) *Michelle, N.Y.* Polaroid instant. Unique. Signed, bottom right. 1989. 24 x 20 inches. \$5,000.



28-P. Ben BUTLER (American, b. 1979) *Invention #61*. Ink on paper. Signed verso. 2012. 12 x 18 inches. \$1,400.



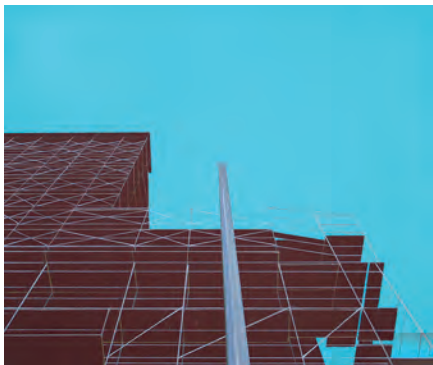
29-P. Ben BUTLER (American, b. 1979) *The Other I*. Poplar. 2010. 4-3/4 x 4 x 15 inches. \$2,200.



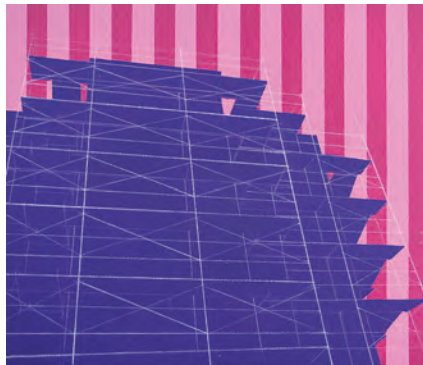
30-A. Alexander CALDER (American, 1898-1976) *Plancton*. Color lithograph. Edition 37/75. Signed. 1976. Published by Maeght Editeur. 22-3/4 x 30-1/2 inches. [43150c] \$1,800.



33-A. Alexander CALDER (American, 1898-1976) *Caracol*. Color lithograph. Edition 52/75. Signed. 1973. 23 x 30-3/4 inches. [43149c] \$1,800.



34-P. Tram BUI (Vietnamese/American, b. 1972) *2612*. Oil on panel. 2013. 20 x 24 inches. \$1,500.



35-P. Tram BUI (Vietnamese/American, b. 1972) *Hiawatha*. Oil on panel. 2013. 8 x 10 inches. \$750.

(opposite) **31-A. Alexander CALDER** (American, 1898-1976) *"Figure with Kite."* From SANTA CLAUS PORTFOLIO. Etching. Edition XVI/CLXXV. Signed and numbered. 1974. Published by l'Herne, Paris. 13 x 18-3/4 inches. [43138c] \$750.

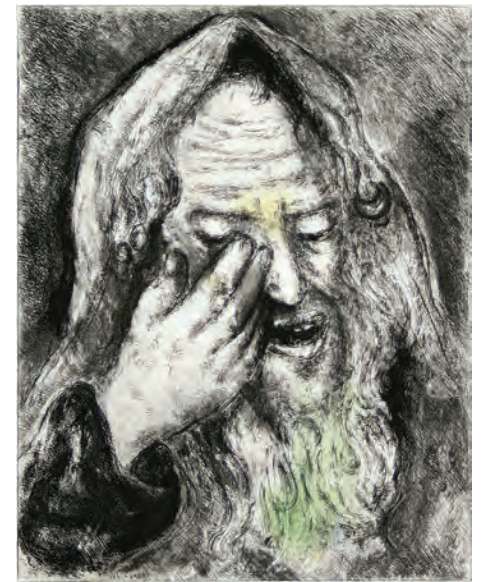
(opposite) **32-A. Jacques CALLOT** (French, 1592-1635) *Beggars Dying by the Roadside*. Plate 16 from the LES GRANDES MISÈRES DE LA GUERRE. Etching. Signed in the plate. 1633. Lieure 1354, iii. Collector's stamp. Thread margins. Interior of borderline at bottom and top right corners wiped clean. *Ex coll.* Duc d'Arenberg. 3-1/8 x 7-1/4 inches. [43086c] \$225.



37-A. John CAMERON (American, 1828-1863) *Trotting Stallion Tom Moore Driven by Danl. Mace...* Hand-colored lithograph. 1870. Published by Currier & Ives. Gale 6708. 19-3/8 x 26-3/8 inches. [43108] \$1,250.



38-A. John CAMERON (American, 1828-1863) *The Celebrated Trotting Horse Trustee as He Appeared in His 20th Mile*. Hand-colored lithograph after an original drawing by Samuel Jones. 1848. Published by N. Currier. Gale 1003. 21 x 26-7/8 inches. [43107] \$1,250.



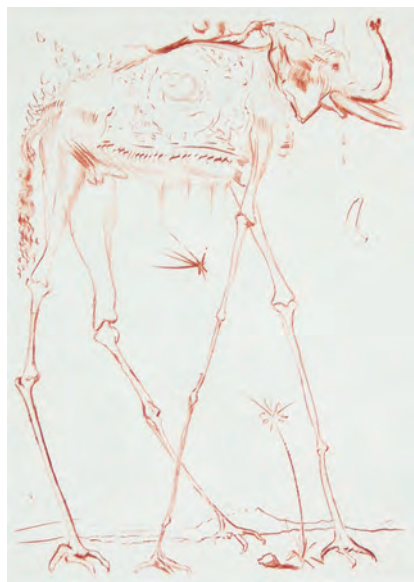
36-A. Marc CHAGALL (Russian/French, 1887-1985) *Calling of Jeremiah*. From the BIBLE SERIES. Etching with hand color. Initialed in pencil. 1952. Very faint toning. 12-1/2 x 10 inches. [43054c] \$3,600.



39-A. Alexander CALDER (American, 1898-1976) *Tropical II*. Color lithograph. EA. Signed. 32 x 23-1/4 inches. [42803c] \$1,500.



40-A. (after) Marc CHAGALL (Russian/French, 1887-1985) *Angel of Judgment*. Poster for Musée National Message Biblique Marc Chagall by Charles Sorlier. Original color lithograph on Arches. Edition 5000. Courtesy signature lower right. 1974. Sorlier 139. Tape residue on verso, outer 1/4 inch of margins. 30 x 20-1/2 inches. [43170c] \$1,500.



42-A. Salvador DALÍ (Spanish, 1904-1989) *Elephant*. For QUINAE GRAVURES ALBUM. Drypoint on Rives. Edition 146/150. Signed. 1968. Field 68-4, g. Stamp on verso. 6-1/2 x 5 inches. [29164c] \$385.



41-A. Fay CHONG (Chinese/American, 1912-1973) *Old Mansion*. Linocut. Signed. 8-1/2 x 10-1/2 inches. [42958c] \$675.



44-A. Charles François DAUBIGNY (French, 1817-1878) *Les Vaches Au Marais*. Etching. 2 collectors stamps. Adhesive remains at outer edge of upper margin. Ex coll. A. Maroni. Delteil 83, ii/iv. 4-3/4 x 8-3/4 inches. [43092c] \$250.

45-A. Arthur B. DAVIES (American, 1862-1928) *Summer Interval*. Lithograph. Edition 20. Signed. 1918. Price 135. A little stain along top margin and one tiny spot top-right. 11-1/2 x 15-1/2 inches. [43096c] \$325.



(opposite 46-A. Honoré DAUMIER (French, 1808-1879) *Les Chemins de Fer*: "Si ma machine est bonne?..."". From LE CHARIVARI. Lithograph. Signed in the stone. 1843. D. 1049. Text verso. Some spotting/staining, especially bottom margin. 8 x 10-1/4 inches. [43093c] \$160.



43-A. Salvador DALÍ (Spanish, 1904-1989) *Les Amants Condamnés*. From TRISTAN AND ISOLDE. Color drypoint. Edition 4/125. Initialed; blindstamp in lower left. 1970. Field 70-10, j. 15-3/4 x 10-1/2 inches. [29165c] \$700.



47-A. Warren DAVIS (American, 1865-1928) *After the Bath*. Drypoint. Edition unknown. Ca. 1920. Signed. 7-7/8 x 5-7/8. [29288c] \$225.



48-A. Arthur B. DAVIES (American, 1862-1928) *Greek Athletes*. Lithograph. Edition 35, only state. Signed. 1920. Price 61. 9-1/2 x 11-1/2 inches. [43112c] \$375.



49-A. Phyllis "Pele" DE LAPPE (American, 1916-2007) *Sunday Music*. Lithograph. Edition 4/11. Signed. 1939. Dated and copyright in the stone. 10-1/4 x 11-1/4 inches. [43123c] \$900.



50-A. John DE MARTELLY (American, 1903-1979) *Old Moon*. Lithograph. Edition 250. Signed. 1938. Published by AAA. Zink 46, North 21, Ryan 56. 10-1/8 x 13-3/4 inches. [43109c] \$900.



51-C. Lockwood DENNIS (American, 1937-2012) *Dark Car*. Woodcut. Edition 28. Signed. 1985. 7-1/2 x 12 inches. \$200.

In April, 2014, Davidson Galleries will host a comprehensive retrospective exhibition for **Lockwood Dennis** (1937-2012). If you would like to be contacted with updates regarding the show please write Miranda K. Metcalf at miranda@davidsongalleries.com.



52-C. Lockwood DENNIS (American, 1937-2012) *Mt. Erie*. Woodcut. Edition 39/46. Signed. 1996. 15 x 12 inches. \$800.



53-C. Lockwood DENNIS (American, 1937-2012) *Red House*. Woodcut. Edition 3/48. Signed. 1996. 15 x 12 inches. \$1,200.

54-P. Warren DYKEMAN
(American, b. 1967)
BLUE BLOCK.
Mixed media on canvas.
Signed, bottom left. 2013.
48 x 30 inches.
\$3,200.



55-P. Warren DYKEMAN
(American, b. 1967) *GREEN JEANS*. Mixed media on Okawara. Signed, bottom left. 2012. 40 x 72 inches. \$6,000.





56-A. Leonor FINI (Argentine/French, 1908-1996) *La Deuxième Ombre (The Second Shadow)*. From VISAGE POUR DÉLIE suite. Color lithograph. Edition 101/225. Signed. 1974. 20 x 15 inches. [43151c] \$750.



59-A. Henri FANTIN-LATOURE (French, 1849-1904) *La Valkyrie: Acte Ière -- Sieglinde Et Siegmund*. Plate 10 from RICHARD WAGNER, SA VIE ET SES ŒUVRES. Lithograph on China. Hédiard 70. Minor stains in margins. Hinge remains verso. 9-15/16 x 6 inches. [43082] \$300.



57-A. Leonor FINI (Argentine/French, 1908-1996) *L'Enfant des Dieux (The Gods' Child)*. From VISAGE POUR DÉLIE suite. Color lithograph. Edition 188/225. Signed. 1974. 20 x 15 inches. [43152c] \$750.



60-A. Henri FANTIN-LATOURE (French, 1849-1904) *L'Or Du Rhien: Scène Ière: Les Filles Du Rhein*. Plate 9 from RICHARD WAGNER, SA VIE ET SES ŒUVRES. Lithograph on China. Hédiard 69. 9-1/16 x 6-15/16 inches. [43083] \$300.



58-A. Leonor FINI (Argentine/French, 1908-1996) *La Jeune Mémoire (The Young Memory)*. From VISAGE POUR DÉLIE suite. Color lithograph. Edition 101/225. Signed. 1974. 20 x 15 inches. [43153c] \$750.

61-A. Don FREEMAN (American, 1908-1978) *Deep in Hollywood*. Lithograph intended for AAG. Edition ca. 200. 1936. One of a few signed proofs. McCulloch 108. 9-1/2 x 12 inches. [43118c] \$750.



62-A. Don FREEMAN (American, 1908-1978) *Male Filming A Tale of Two Cities*. Lithograph. Edition 25. Signed and signed in the stone. 1935. M. 104. 9-1/8 x 13 inches. [43124c] \$700.

63-A. Don FREEMAN (American, 1908-1978) *Four to Go*. Lithograph. Edition ca. 35. Signed and dedicated in pencil. Signed in the stone. 1933. M. 74. Some general light soiling in margins, irregularly cropped left margin and a little glue residue in wide bottom margin. 11-1/2 x 14 inches. [29814c] \$1,600.





64-A. Aileen Mary ELLIOTT (British, 1896-1966)
Spark's Wharf.
Etching. Signed.
"England" watermark.
5-3/8 x 6-5/8 inches.
[42913c] \$135.



66-A. Hans ERNI (Swiss, b. 1909)
Le Chimiste (Pharmacy Progresses Toward the 21st Century). Five color lithograph. Edition 4000 and 100 AP with different color. Signed. 1967. Published by Maison Mathieu, Zurich. 26 x 19-1/4 inches. [42608c] \$475.



65-A. Margaret Ann GAUG (American, 1909-1994)
Madonna and Child.
Colored etching.
Signed.
10 x 8-1/2 inches.
[42911c] \$300.

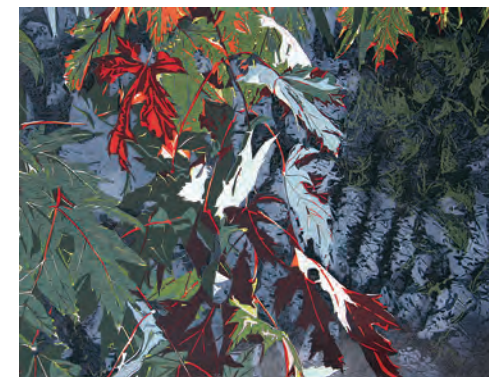


67-P. Alexander GORENSTEIN (Russian, b. 1952) *Tea Drink in Paradise.*
Oil on canvas. Signed, bottom right. 31-1/2 x 38-3/4 inches. \$6,800.

68-C. Jean GUMPPER (American, b. 1955)
Bittersweet. Woodcut with pochoir. Edition 19. Signed. 2013. 20 x 30 inches. \$900.



69-C. Art HANSEN (American, b. 1929)
Roses. Etching with hand-color. Signed. AP VI. 1991. 11 x 9 inches. \$200.



70-C. Jean GUMPPER (American, b. 1955) *Elegy.*
Woodcut with pochoir. Edition 28. Signed. 2013. 15 x 19 inches. \$750.

71-C. Art HANSEN (American, b. 1929) *Man, Fire, and Forest.*
Color lithograph. AP II. Signed. 1985. 22 x 33 inches. \$1,100.





72-A. Joseph HIRSCH (American, 1910-1981) *Coffee*. Lithograph. Edition 250. Signed. 1961. Published by AAA in 1963. Cole 38. 16-1/2 x 13-1/8 inches (sheet). [29152c] \$475.



73-A. Joseph HIRSCH (American, 1910-1981) *Nude with Necklace*. Lithograph in sepia. Edition 14/100. Signed. 1974. Published by AAA. Not in Cole catalog. 11 x 15-1/2 inches. [29220c] \$800.

74-C. Wuon-Gean HO (British, b. 1973) *Moving Day Fish*. Linocut. AP. Signed. 2013. 7 x 5 inches. \$150.



75-C. Wuon-Gean HO (British, b. 1973) *Lansu Lions*. Linocut. Edition 20. Signed. 2013. 11 x 31 inches. \$375.



76-C. Wuon-Gean HO (British, b. 1973) *Lansu Lake*. Linocut. Edition 20. Signed. 2013. 11 x 31 inches. \$375.



77-A. Kawase HASUI (Japanese, 1883-1957) *Snow at Nezu-Gongen (Nezu Gongen no yuki)*. Color woodblock. Hasui signature with Kawase seal. 1933. Later impression. Published by Watanabe Shōzaburō (6mm circle seal). Hotei 345. Ōban tate-e. [42983c] \$750.



80-A. Erich HECKEL (German, 1883-1970) *Der Versucher (The Tempter)*. Drypoint and etching on wove paper. Signed. 1913. Dube 113. 9-7/8 x 7-3/4 inches. [42994c] \$4,200.

78-A. Kawase HASUI (Japanese, 1883-1957) *Spring Evening at the Kintai Bridge (Kintaikyō no shunshō)*. Color woodblock. 1947. Hotei 503. Ōban tate-e. [43132c] \$475.



79-A. Kawase HASUI (Japanese, 1883-1957) *Dusk at Itako (Itako no yū)*. Color woodblock. Hasui signature with Kawase seal. 1930. Published by Sakai-Kawaguchi. Hotei 195a. Ōban tate-e. [43126c] \$275.



81-A. Kawase HASUI (Japanese, 1883-1957) *Zensetsū Temple, Sanshū*. From COLLECTION OF SCENIC VIEWS OF JAPAN II, Kansai edition. Color woodblock. 1937. Later impression. Published by Watanabe Shōzaburō (6mm circle seal). Ōban tate-e. [43127c] \$650.



82-A. Charles-Emile JACQUE (French, 1813-1894) *Recureuse (Chambermaid)*. Plate 24. Etching. Proof on chine collé. 1844. P. 72, iii/vii; G. 33, ii/ii. Two collector's stamps verso. 4 x 6-1/4 inches. [29325] \$125.



83-A. Jacques HNZDOVSKY (Ukrainian/American, 1915-1985) *Old Tree*. Woodcut. Edition 76/150. Signed. 1967. Collector stamp verso. Small printing loss or tiny void in the block. Tahir 75. 6-1/2 inch diameter. [29297c] \$150.



84-A. Alfred HUTTY (American, 1877-1954) *Across the Valley*. Etching. Signed. 1930. 8-3/4 x 7-3/8 inches. [42988] \$500.



85-A. Eli JACOBI (American, 1898-1984) *Haircut and Shave*. Linocut. Stamped (monogram). Chop. Ryan 31. 10-1/16 x 8 inches. [43115c] \$500.



86-P. Kate HUNT (American, b. 1956) *Two Columns*. Newspaper. 2007. 120 x 5-1/2 x 5-5/16 inches. Price on request.



87-A. HOMANN Heirs (German, 18th century) *Americae Mappa Generalis*. Hand-colored engraving, ca. 1746. 19 x 22-1/4 inches. [42963] \$800.



88-A. Johannes JANSSONIUS II (Dutch, 1588-1664) *Terra Firma et Novum Regnum Granatense et Popayan*. Hand-colored engraving, ca. 1640. French text verso. Full margins and good overall condition. Light stains at outer edge of margins at 4 corners. 15 x 19-1/2 inches [42914c] \$850.



89-A. Käthe KOLLWITZ (German, 1867-1945) *Stehende Mutter, Ihr Bublein Futternd (Standing mother feeding her little one)*. Etching. Unnumbered edition. Unsigned. 1931. Printed by Schultz for Otto Felsing Printery on ivory similiti-Japan, ca. 1950. Published by von der Becke. Kn. 242. 7-7/8 x 6 inches. [43012c] \$750.



90-A. Käthe KOLLWITZ (German, 1867-1945) *Aufruhr (Uprising)*. Etching and aquatint. 1899. Published by von der Becke (Berlin-Hallensee blindstamp). Kl. 44, Kn. 46. 11-5/8 x 12-1/2 inches [43099c] \$800.

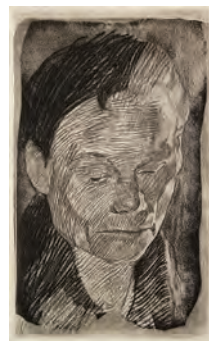


91-A. Käthe KOLLWITZ (German, 1867-1945) *Selbstbildnis im Profil Nach Rechts (Self-portrait in profile facing right)*. Lithograph on smooth ivory wove paper. First edition of 30. Unsigned. ca. 1938. Printed with the approval of Hans Kollwitz, the artist's son ca. 1945. Published by Hans Kollwitz. Kn. 273. 18-1/2 x 11-3/8 inches. [43008c] \$3,600.



92-A. Käthe KOLLWITZ (German, 1867-1945) *Schwangere Frau (Pregnant woman)*. Etching and aquatint on heavy copperplate Ziegler paper. Edition 17/50. Signed. Plate 1910; impression 1918. Printed by Otto von Felsing. Published by Emil Richter. Kn. 111, ivd/vii. Bend in the upper right corner of margin. Light scattered foxing on surface. 14-7/8 x 9-1/16 inches. [43011c] \$5,000.

93-A. Käthe KOLLWITZ (German, 1867-1945) *Betendes Mädchen (Praying Woman)*. Aquatint with soft ground etching printed in a dark brown ink on heavy cream copperplate wove paper. Unnumbered; from early edition. Signed K.K. by unknown hand. 1892. Printed by Schultz, for Otto Felsing Printery. Published by Emil Richter, Dresden. Kn. 14, iii/iv. 7-11/16 x 5-7/8 inches. [43007c] \$3,600.



94-A. Käthe KOLLWITZ (German, 1867-1945) *Frauenkopf (Woman's head)*. Line and softground etching, drypoint, and aquatint on wove paper. Plate: 1905. Published by von der Becke (Munich Blindstamp). Kn. 93, vc/v. 9 x 5-1/2 inches. [43016c] \$500.



95-A. Käthe KOLLWITZ (German, 1867-1945) *Sitzender männlicher Akt (Seated Male nude)*. Etching and drypoint on wove paper. Plate: 1891. Published by von der Becke (Munich blindstamp). Kn. 4, iif/ii. 6-1/4 x 5 inches. [43018c] \$325.



96-A. Käthe KOLLWITZ (German, 1867-1945) *Beim Dengeln (Sharpening the scythe)*. Sheet 3 from the "Peasant's War" cycle. Line and soft ground etching. Plate: 1905. Published by von der Becke (Munich blindstamp). Kl. 90, Kn. 88. 11-3/4 x 11-3/4 inches. [43100c] \$600.



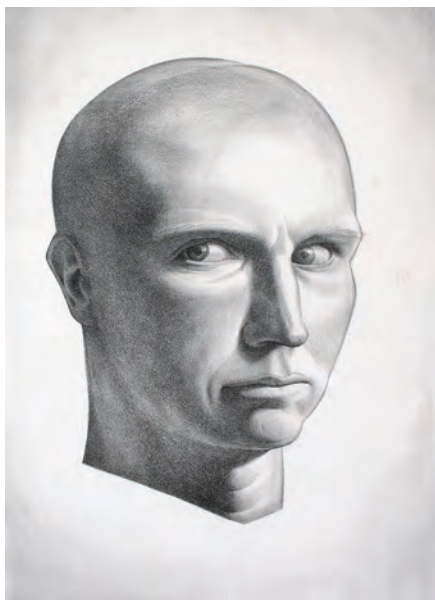
97-A. Käthe KOLLWITZ (German, 1867-1945) *Arbeiterfrau im Profil nach Links (Female worker in profile facing left)*. Lithograph on cream laid paper. Unnumbered edition printed by Hermann Birkholz. Signed and titled in pencil. Stone 1903; impression ca. 1920. Published by Emil Richter. Kn. 74, iiiia. 24-1/8 x 19-3/16 inches. [43010c] \$4,200.



98-A. Shiro KASAMATSU (Japanese, 1898-1991)
Buddha. Color woodblock.
Edition 80/100. Signed in the
block with artist seal bottom
left. 1960. Self-published.
Oban tate-e. [42903c] \$450.



99-A. Shiro KASAMATSU (Japanese, 1898-1991)
Ashura. Color woodblock.
Edition 194/200. Signed in
the block with artist seal
bottom right. 1959. Self-
published. Oban tate-e.
[42902c] \$475.



100-A. Alphonse LEGROS (French, 1837-
1911) *Triumph of Death*. Drypoint. Signed.
Collector's stamp. Partial watermark.
7 x 8-3/4 inches. [43087c] \$225.

101-A. Rockwell KENT (American, 1882-1971)
Self Portrait (alternate titles: *Das Ding an Sich*
and *It's Me O Lord*). Lithograph. Edition 150.
Signed. 1934. B. Jones 104. A few foxing spots
and some slight soiling. No Rives watermark.
13-3/8 x 9-3/4 inches. [43131c] \$1,500.



102-C. Eunice KIM (Korean-American, b. 1971) *Tessellation (48-3) #8*.
Collagraph monoprint. Unique. Signed. 2013. 12 x 36 inches \$1,600.



103-A. Utagawa KUNIYOSHI (Japanese, 1797-
1861) *Tenjo-no-tsubone surrounded by crabs*.
Righthand panel from triptych *BATTLE OF
DANNAOURA (DANNAOURA SEN NO ZU)*.
Color woodblock. 1844. Published by Kogaya
Katsugoro. Oban tate-e. [32335c] \$625.



106-A. Utagawa KUNIYOSHI (Japanese, 1797-1861) *The Beginning
of the First Act: Ichikawa Ebizō
V as Moronao*. From series *JU-
NI DAN SHOKU KANADEHON
CHŪSHINGURA: DAIJO (THE
TWELVE ACTS OF THE LANTERN
CHUSHINGURA)*. Color woodblock.
Artist signature and *yoshi kiri* seal.
1852. Kunigasa and Murata censor
seals. Carved by Hori Takichi.
Published by Mitaya Kihachi. Robinson
218. Oban tate-e. [32337c] \$575.



104-C. Janet LOWRY (Canadian, b. 1938)
Gathering Storm. Etching, aquatint, pastel.
Edition 9. Signed. 2007. 18 x 24 inches. \$600.



105-A. Clare LEIGHTON (British/American, 1898-
1989) *The Crinoline*. Wood engraving. Edition 48/50.
Signed. 1925. BPL 12. Commission for A. Mackenzie
THE HALF LOAF, London: Heinemann. Margins
cropped irregularly. 5 x 4-1/4 inches. [42981b] \$375.



107-A. Clare LEIGHTON (British/American, 1898-
1989) *Evening after the Show*. Page 125 for *COUNTRY
MATTERS*. Wood engraving. Edition 40. Signed. 1937.
BPL 407. 2-1/4 x 4-1/4 inches. [42981c] \$275.



109-A. Reginald MARSH (American, 1898-1954) *Drum Majorette*. Engraving. Signed. Plate: 1940; impression: 1947. Dated and initialed in plate. Published by Atelier 17 for "Laurel" quarterly magazine. Sasowsky 204. 11-3/4 x 5-7/8 inches. [43117c] \$1,100.



111-P. Robert MARX (German/American, b. 1925) *Conflicted Memories*. Oil on canvas. Signed, bottom right. 20 x 16 inches. \$4,400.

108-A. Elizabeth NORTON (American, 1887-1985) *On the Sidelines*. Drypoint. Edition 30. Signed. 1932. 8-7/8 x 6-7/8 inches. [42912c] \$200.



110-A. Lewis LOZOWICK (American, 1892-1973) *Quiet Harbor (Swimming Hole)*. Lithograph. Edition 250. Signed. Stone: 1932; impression: 1949. Printed by George C. Miller. Published by AAA. 9-1/4 x 13 inches. [43116c] \$950.



112-P. Robert MARX (German/American, b. 1925) *Pernicious Memories*. Oil on canvas. Signed, bottom right. 2013. 17 x 15 inches. \$3,800.

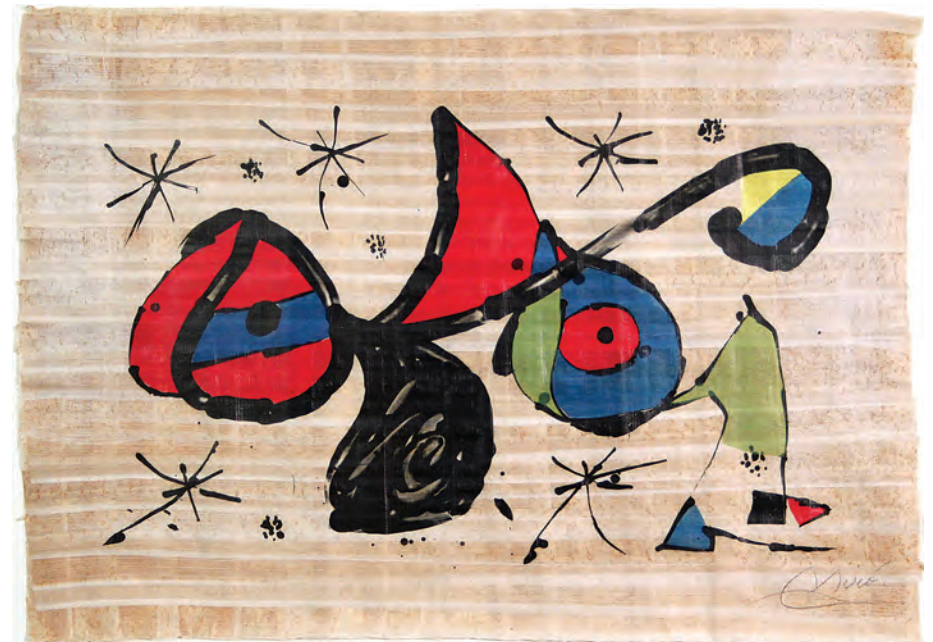


114-C. Robert MARX (German/American, b. 1925) *Learning the Boxes #9*. Etching. Edition 8/15. Signed. 1995. 3 x 2 inches. \$200.

115-A. Charles MERYON (French, 1821-1868) *Pêcheurs de la Mer du Sud (Fishermen of the South Sea)*. Etching after Reinier Nooms Zeeman. Initialed in the plate. Delteil 15, i; W. 72, i. 2-5/8 x 4-3/4 inches. [42969c] \$800.



113-C. Robert MARX (German/American, b. 1925) *Bleeding Hearts*. Linocut. Edition 5/12. Signed. 1956. 15-1/2 x 25 inches. \$600.



116-A. Joan MIRÓ (Spanish, 1893-1983) *Homage a Joan Miró*. Color lithograph on papyrus. Total edition 1000 numbered on Arches, 300 unnumbered on Arches, and 60 numbered on papyrus. This impression 30/60 on papyrus. Signed verso. 1978. Printed by Litografias artísticas Damià Caus, Barcelona. Published by Mallorca Daily Bulletin. Provenance: Gerhard Wurzer Gallery. 18 x 26 inches. [42922c] \$6,500.



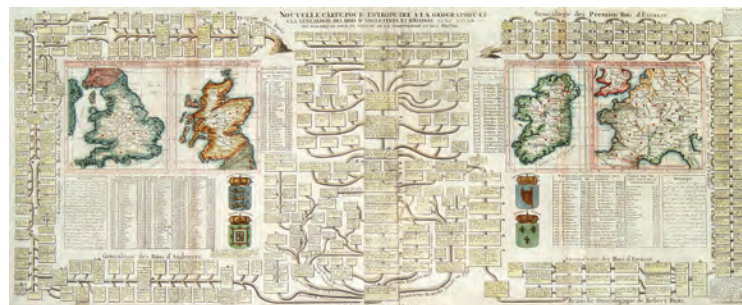
117-A. Henry MOORE (British, 1898-1986) *Three Seated Figures in Setting*. 2 color lithograph. Edition 22/75. Signed. 1975. Printed by Curwin Prints, Ltd. Published by Ediciones Poligrafa. Cramer 421. 8-1/2 x 13-7/8 inches. [43137c] \$1,000.



118-A. Henry MOORE (British, 1898-1986) *Reclining Figure Architectural Background IV*. Color lithograph on T.H. Saunders. Edition 100. 1977. Published by N. Helion Editions, Paris. Cramer 457. 12-1/2 x 15 inches. [43139c] \$2,200.



119-A. Kenneth Hayes MILLER (American, 1876-1954) *Shoppers Leaving the Shop*. Etching. Edition unknown. Signed. 1929. One of the artist's best known prints. Only state. 7-7/8 x 9-7/8 inches. [43134c] \$850.



121-A. Map *Nouvelle Carte pour Introduire a la Geographie at a la Genealogie des Rois d'Angleterre et d'Ecosse avec Diverses Remarques pour le Secours de la Chronologie de de l'Histoire*. Hand-colored engraving. 1719. Published in Amsterdam. Glue and stains verso. 16 x 37 inches. [42965c] \$500.



122-A. Richard MÜLLER (German, 1874-1954) *Auf der Schaukel (On the see-saw)*. Engraving on faux Japan. Signed. 1922. Günther 123. Three collector's stamps verso. 8-1/4 x 6-1/2 inches. [42900] \$900.



123-A. Jackson Lee NESBITT (American, 1913-2008) *The Watering Place*. Etching. Edition 250. Signed. 1941. Published by AAA. Retif & Salzer 18. 12-1/8 x 9-7/16 inches. [43121c] \$1,200.

120-C. Barry MOSER (American, b. 1940) *Don Quixote*. Wood Engraving. AP. Signed. Slight folds in both lower corners far from image. 12-1/2 x 7-1/2 inches. \$450.





124-P. Camille PATHA (American, b. 1938)
Self Portrait at Midnight. Oil on canvas. Signed,
bottom right. 2013. 60 x 48 inches. \$8,200.



126-C. Chris PAPA (American,
b. 1966) *Gift*. Color woodcut.
Edition 13. Signed. 2008.
24 x 11 inches. \$300.



125-P. Camille PATHA (American, b. 1938)
Liar's Edge. Oil on canvas. Signed, bottom right.
2013. 48 x 36 inches. \$5,200.



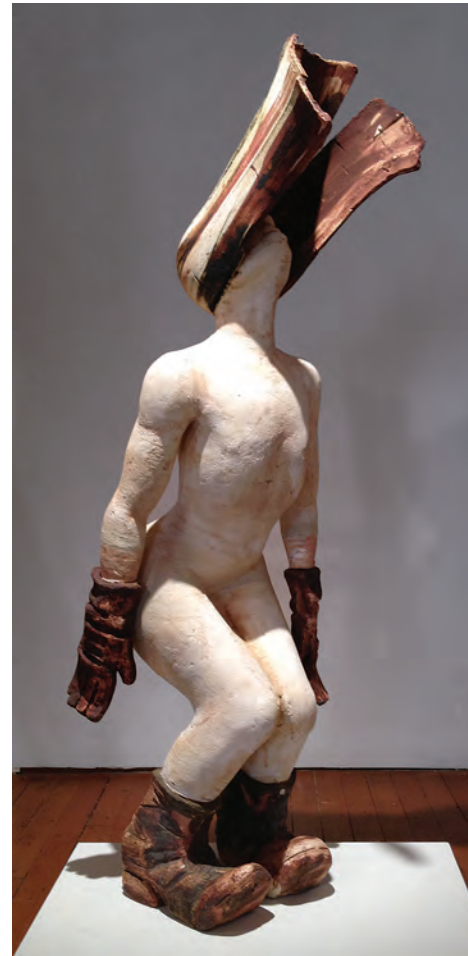
127-A. Max PECHSTEIN (German, 1881-
1955) *Fischerkopf IX (Head of a Fisherman
IX)*. Woodblock on laid paper. Initialed in
the block. Signed. 1921. Krüger H245.
15-3/4 x 12-9/16 inches. [43000c] \$2,800.



128-A. Joseph PENNELL (American, 1857-
1926) *Rouen, from Bon Secours*. Etching.
Edition ca. 90. Signed. 1907. Wuerth 464.
7-3/4 x 12-1/4 inches. [43094c] \$650.



129-A. Cécile REIMS (French, b. 1927)
La Seine à la Valois. Engraving. Edition 13/50.
Signed. 6-7/8 x 9-1/8 inches. [42897c] \$300.



130-P. J.D. PERKIN (American, b. 1962) *Butoh/Punk*.
Stoneware. 2013. 63 x 29 x 20 inches. \$9,000.



131-A. Tadashi NAKAYAMA (Japanese, b.
1927) *Mahiro no Kaze (Midday Wind)*. Color
woodblock. Edition 25/85. Signed. 1967.
Hendrick 96. 9-5/8 x 5 inches. [42901c] \$900.



132-P. Alexander PETROV (Russian, b. 1957) *Obnova*. Oil on canvas. Monogram, bottom right. 2010. 39-1/2 x 39-1/2 inches. \$7,500.



133-C. Annemarie PETRI (Dutch, b. 1965) *De Stad Die Je Alleen Vanuit De Verte Kon Zien (The City You Could Only See from Afar)*. Etching. Edition 25. Signed. 2013. 25 x 19 inches. \$595.



134-A. Jean-François RAFFAELLI (French, 1850-1924) *La Cabane du Chiffonnier*. Colored etching. Edition 67/70. Signed. 1907. Deltail 78, ii/ii. Toned and somewhat faded. 4-1/2 x 6 inches. [43056c] \$225.



135-P. Alexander PETROV (Russian, b. 1957) *Red Hot Sauce*. Oil on aluminum. Monogram, bottom right. 2011. 18 x 16-1/2 inches. \$3,600.



136-C. Annemarie PETRI (Dutch, b. 1965) *De Stad Die Steeds Opnieuw Verwoest Werd Door Vallende Planeten (The City That Was Destroyed Over and Over Again by Falling Planets)*. Etching. Edition 25. Signed. 2013. 25 x 19 inches. \$595.

137-A. Giovanni Battista PIRANESI (Italian, 1720-1778) *Veduta Dell' Acqua Giulia Avanzo Del Castello*. Etching. 18th century impression. Hind 34, iii/vi. Hind watermark #3. [43091c] \$800.



138-A. Hartwell Wyse PRIEST (Canadian/American, 1901-2004) *Bambi*. Drypoint. Signed. 5 x 4 inches. [42979c] \$225.

139-A. Giovanni Battista PIRANESI (Italian, 1720-1778) *Veduta del Tempio di Antonino e Faustina in Campo Vaccino*. Etching. 1753. 18th century impression. H. 34, iii/vi; F. 822. Watermark (H. 4). 15-3/4 x 23-7/8 inches. [43089c] \$800.



140-A. Hartwell Wyse PRIEST (Canadian/American, 1901-2004) *Birches*. Drypoint on Japan. No. 10 (3rd state) III. Signed. 4-7/8 x 3 inches. [42978c] \$225.

141-A. Giovanni Battista PIRANESI (Italian, 1720-1778) *Colonna Trajana*. From the VEDUTE. Etching. 1758. Wilton-Ely 150; H. 51, iii. Fleur-de-Lis double oval watermark (Hind 3). 21-1/2 x 16-1/8 inches. [42964c] \$1,800.





142-A. Giovanni Battista PIRANESI (Italian, 1720-1778) *Veduta del Piazza del Monte Cavallo*. Etching. 1758. 18th century impression. H. 15, iii or iv/vi. Watermark (H. 3) 15-1/4 x 21-3/8 inches. [43090c] \$950.



143-A. Giovanni Battista PIRANESI (Italian, 1720-1778) *Egyptian Decoration of the Caffè degli Inglesi: Animals on the Cornice...* Plate 45 from the CAMINI. Etching. W-E 875, Focillon 907. Rich impression. Adhesive remains and some staining visible verso to recto in lower right corner of margin. 9-3/8 x 12-7/8 inches. [42982c] \$485.

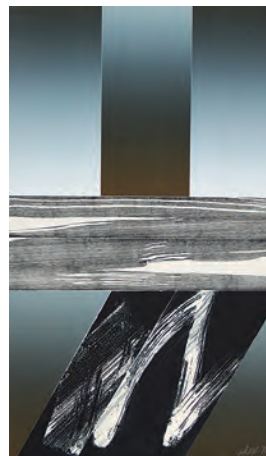


144-A. Matthaeus Porronaus Pistoia. Engraving after design by Francesco Leoncini. From volume two of *HISTORIE DEL SALVI*. 1657. 15-1/2 x 19-3/4 inches. [42966c] \$625.



145-A. Auguste Rene F. RODIN (French, 1840-1917) *Victor Hugo, de face*. Etching. 1885. Delteil 7, iii or iv/v. 8-3/4 x 6-7/8 inches. [43053c] \$475.

146-C. Artemio RODRIGUEZ (Mexican, b. 1972) *The Beast That Sees It All*. Linocut. Edition 20. 2004. 11-3/4 x 14-3/4 inches. \$300.



147-A. Peter RAMSEY (American, contemporary) #4, *Unique Print*. Intaglio and relief print from 9 metal plates on BFK Rives with Dan Smith & Hanco inks. Initialed in lower right. 1978. Provenance: Anne Johnson Gallery, Seattle. 21-3/4 x 13 inches. [42899c] \$450.



148-A. Odilon REDON (French, 1840-1916) *Oannès: Moi, la première conscience du chaos, j'ai surgi de l'abîme pour durcir la matière, pour régler les formes* (*Oannès: I, the first consciousness of chaos, arose from the abyss that I might harden matter, and give law unto forms*). Plate XIV for *LA TENTATION DE SAINT ANTOINE* (third series). Lithograph on chine collé. Edition 50. Published by Vollard, Paris. 11 x 8-1/2 inches. [43085c] \$850.

149-A. Robert RIGGS (American, 1896-1970) *Tumblers (Wen Hai's Troupe, Ringling Brothers)*. Lithograph. Edition unknown. Signed and signed in the stone. 1934. Beal 73. 14-1/4 x 19 inches. [43111c] \$2,500.





150-A. Sven Birger SANDZÉN (Swedish, 1871-1964) *Mountain Barns*. Drypoint. Edition 12/40. Signed. 4-1/2 x 6 inches. [43097c] \$175.



151-A. Sven Birger SANDZÉN (Swedish, 1871-1964) *Mountain Stream*. Drypoint. Edition 19/30. Signed and titled in pencil. 5-1/8 x 4-1/2 inches. [43098c] \$250.

152-C. Tomiyuki SAKUTA (Japanese, b. 1960) *Kerstin*. Intaglio with chine collé. Edition 30. Signed. 2012. 6 x 4 inches. \$150.



154-C. Tomiyuki SAKUTA (Japanese, b. 1960) *Kiki*. Intaglio with chine collé. Edition 30. Signed. 2012. 6 x 4 inches. \$150.



153-A. Georges R. ROUAULT (French, 1871-1958) *Toujours Flagellé...* (*Forever Scourged...*) Plate 3 from the MISERERE. Mixed etching. Edition 72/425. 1948. Ambroise Vollard watermark. Provenance: Ferdinand Roten Galleries. Faint staining along right edge of plate. 19-1/4 x 14-1/2 inches. [42052c] \$1,200.



155-A. Ralph SCARLETT (American, 1881-1984) *Abstraction*. Gouache. Initialed R.S. in lower right. Provenance: Fletcher Gallery, Woodstock, NY. 9 x 6-1/2 inches. [43055c] \$1,200.



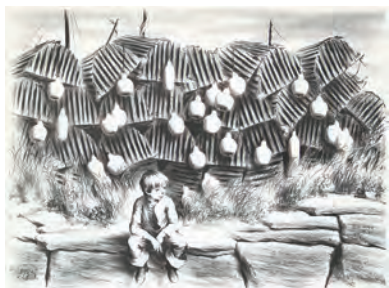
157-A. Karl SCHMIDT-ROTTLUFF (German, 1884-1976) *Kopf eines Mannes* (*Head of a Man*). Woodblock on Japan. Signed. 1922. Shapire 277. Strong even impression, minor blemishes in margins away from image. 11 x 7-3/4 inches. [43009c] \$4,000.



156-A. Oskar SCHLEMMER (German, 1888-1943) *Kopf im Profil, mit schwarzer Kontur* (*Head in profile with black outline*). Sheet 8 from DIE SCHAFFENDEN portfolio. Lithograph on wove paper. Signed. 1928. Die Saftenden Verlag blindstamp lower right corner. Grohmann GL6. Tears at outer edge of broad margin. Minor skinning away from image on verso. 7-3/4 x 5-1/2 inches (image). [43001c] \$7,500.



158-A. Karl SCHMIDT-ROTTLUFF (German, 1884-1976) *Kopf* (*Head*). Woodblock. Signed and numbered 1928 in pencil. 1919. Schapire 255. 9-3/8 x 7 inches. [43002c] \$4,050.



159-A. Lawrence Beall SMITH (American, 1902-1995) *Harbor Scene*. Lithograph. Edition 81/250. Signed. Published by AAA. 13 x 18 inches (sheet). [29197c] \$225.

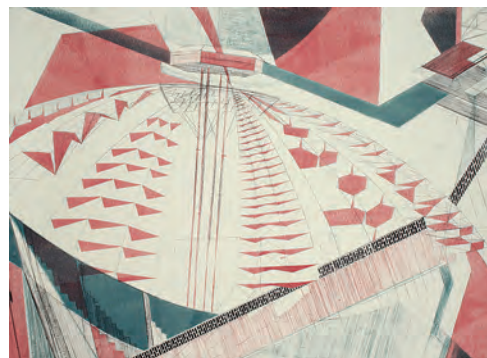


161-A. Ralph SCARF (American, b. 1923) *Israel in Egypt's Land*. Lithograph. Edition 250. Signed. 1947. Published by AAA. 9-1/2 x 11-3/4 inches. [29249] \$150.

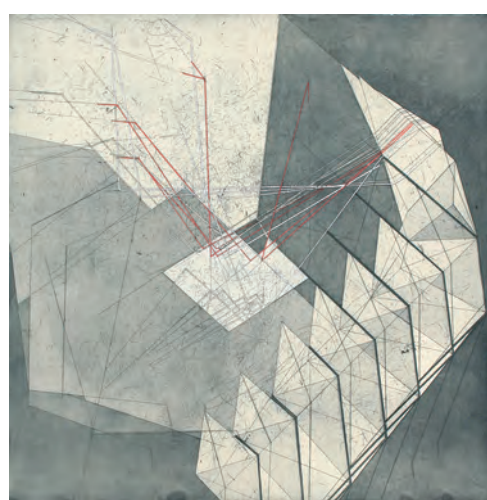


163-A. Yngve Edward SODERBERG (American, 1896-1971) *Close-hauled*. Etching. Edition 100. Signed. 11-3/4 x 9-5/8 inches. [42968] \$350.

160-A. Ferdinand STAEGER (German, 1880-1977) *For the Set of DIE MEISTERSINGER VON NÜRNBERG*. Etching. Proof outside edition of 200. Signed. 1922. 13-3/4 x 9-1/2 inches. [42967] \$325.



162-C. Bronwen SLEIGH (British, b. 1980) *Exhibition Way*. Lithograph. Edition 12. Signed. 2013. 22 x 29 inches. \$650.



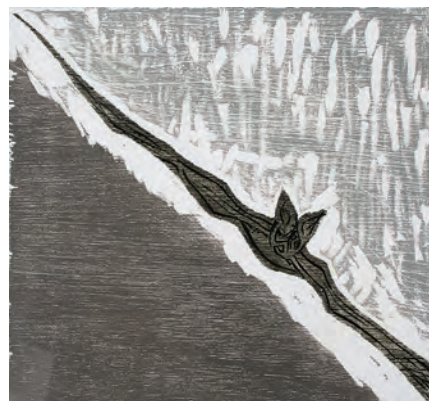
164-C. Bronwen SLEIGH (British, b. 1980) *Westfield Road*. Etching with hand coloring. Edition 20. Signed. 2013. 25 x 25 inches. \$800.



165-C. Seiko TACHIBANA (Japanese/American, b. 1964) *Fern-7a*. Carborundum and intaglio. Edition 25. Signed. 2013. 22 x 19 inches. \$700.



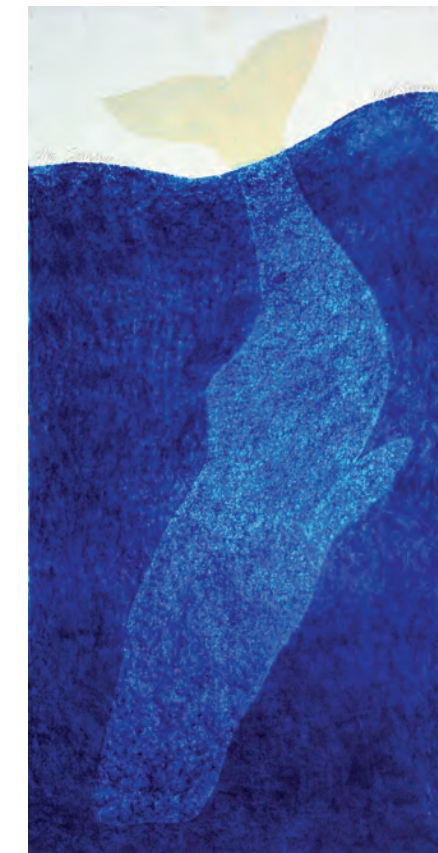
167-C. Charles SPITZACK (American, b. 1987) *Conflicted Figures*. Woodcut. A/P. Signed. 2010. 16 x 32 inches. \$300.



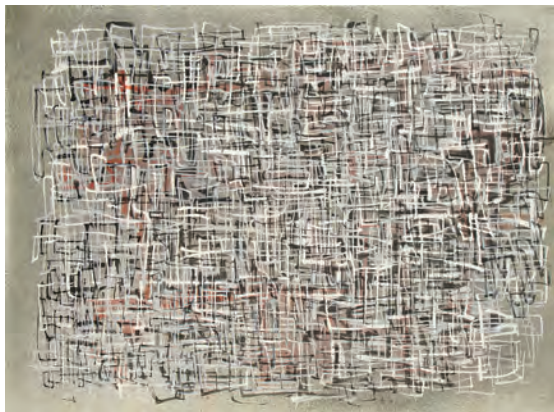
168-A. Francisco TOLEDO (Zapotec, b. 1940) *Murcielago (Bat)*. Color woodcut. Edition 20/50. Signed. 1984. 6-3/8 x 7 inches. [43155] \$700.



166-C. Seiko TACHIBANA (Japanese/American, b. 1964) *Fern-4a*. Carborundum and intaglio. Edition 25. Signed. 2013. 22 x 19 inches. \$700.



169-C. Carol SUMMERS (American, b. 1925) *Sounding*. Color woodcut. Edition 75. Signed. 2013. 48 x 24 inches. \$750.



170-A. Mark TOBEY (American, 1890-1976) *High Tide*. Color lithograph. Edition 19/150. Signed. 1974. 11-1/4 x 15 inches. [42959c] \$1,500.



171-A. Leticia TARRAGO (Mexican, b. 1940) *Bestiario*. Color etching. Edition 73/100. Signed. 15-1/4 x 12 inches. [42804c] \$320.



172-A. Francisco TOLEDO (Zapotec, b. 1940) *La Lagartera (The Lizard Hunting Woman)*. Color etching and aquatint. Edition 13/30. Signed. 1978. 1st state. 9 x 11-3/4 inches. [43156] \$1,600.



173-A. Francisco TOLEDO (Zapotec, b. 1940) *La Caja de Conejos (The Rabbits' Box)*. Color etching and engraving. Edition 11/25. Signed. 12-1/4 x 12-3/8 inches. [43157] \$1,500.



174-C. Charles SPITZACK (American, b. 1987) *Broken*. Woodcut. Edition 25. Signed. 2012. 12 x 18 inches. \$300.

175-A. William WALCOT (Russian/English, 1874-1943) *The Thames*. Drypoint. Signed. 1923. 2-1/2 x 5 inches. [42980c] \$175.



176-A. William WALCOT (Russian/English, 1874-1943) *London Bridge*. Drypoint. Signed. 3-5/8 x 5-5/8 inches. [42906c] \$225.



177-A. Rodney THOMSON (American, 1878-1941) *Siesta*. Drypoint. Signed. 6-7/8 x 9-3/4 inches. [42910c] \$275.



178-A. Jan VAN DER VELDE (Dutch, 1593-1641) #15 *Flat Landscape with Man at Well*. Etching. F. 23, ii/ii. Watermark. Good, even impression. Trimmed to or just within platemark. 4-3/4 x 12-7/16 inches. [43088c] \$325.



179-A. Jacques VILLON (French, 1875-1963) *Eve*. Etching. Edition 50. Signed. Signed and dated 1952 in the plate. Ginestet and Pouillon E 535. 10-1/2 x 7-3/4 inches. [43133c] \$600.



180-A. George TOOKER (American, 1920-2011) *Sleep*. Inkless embossing. Artist proof. Signed. Inscribed. 7 x 9-3/4 inches. [43104c] \$800.



181-P. Patti WARASHINA (American, b. 1940) *Catbox 13C*. Ceramic, glaze and underglaze. Signed, left side. 2013. 12-1/2 x 9-1/2 x 11 inches. \$5,500.



182-P. Patti WARASHINA (American, b. 1940) *Catbox 13E*. Ceramic, glaze and underglaze. Signed, right side. 2013. 16 x 11 x 16 inches. \$5,500.



183-A. Reynold Henry WEIDENAAR (American, 1915-1985) *Train Carriers, Ludington*. Etching and drypoint. Signed. 1964. 12-7/8 x 17 inches. [43119c] \$850.



184-A. H. Gordon WARLOW (English, 1885-1942) *York Minister, England, North Transept Terminal Interior*. Etching and drypoint. Trial proof II/2. Signed. 9-7/8 x 3-7/8 inches. [42954c] \$225.



185-A. H. Gordon WARLOW (English, 1885-1942) *Rouen Cathedral*. Etching and drypoint. Signed. ca. 1929. Annotated "G." 8-3/8 x 6-3/8 inches. [42956c] \$275.



186-A. H. Gordon WARLOW (English, 1885-1942) *Notre-Dame de Caudebec*. Etching and drypoint. Signed. 1929. Annotated "G." Signed. 8-1/2 x 5-1/8 inches. [42957c] \$275.



187-A. James A.M. WHISTLER (American, 1834-1903) *The Smith's Yard*. Lithograph. 1895. Studio blindstamp. Levy 126, Way 88. 7-1/4 x 6-1/4 inches. [29336c] \$485.



188-A. Lynd WARD (American, 1905-1985) *Ritual*. Wood engraving. Signed. 12 x 7 inches. [43114c] \$500.



189-A. Stow WENGENROTH
(American, 1906-1978) *Seaside*
(Ogunquit, Maine and Greenport, New York). Lithograph. Edition 50. Signed. 1970. Stuckey 333. 8 x 15-1/8 inches. [42972c] \$325.



190-A. Stow WENGENROTH
(American, 1906-1978) *Vermont Pasture* (Pawlet, Vermont). Lithograph. Edition 65. Signed. 1965. S. 302. 10 x 15-7/8 inches. [42974c] \$600.



191-A. Stow WENGENROTH
(American, 1906-1978) *Wharf of Wellfleet*. Lithograph. Edition 135. Signed. 1938. S. 73. 7-3/4 x 13-1/8 inches. [42987] \$850.



192-A. John William J. WINKLER (Austrian/American, 1894-1979) *Waterloo Bridge*. Etching. Signed. 1928. 7-3/8 x 15-1/8 inches. [42984] \$485.



193-A. Stow WENGENROTH
(American, 1906-1978) *Butterfly*
(Greenport, New York). Lithograph. Edition 75. Signed. 1968. S. 322. 15-7/8 x 8-7/8 inches. [42973c] \$450.

194-C. Jennifer WORSLEY

(American, b. 1975) *Southernmost Sunset*. Woodcut. Edition 7. Signed. 2013. 9 x 15 inches. \$225.



195-C. Jennifer WORSLEY
(American, b. 1975) *View From Guardsman's Pass*. Woodcut. Edition 16. 2013. 17 x 16 inches. \$425.

196-P. Evelyn WOODS (American, b. 1956) *Tree #7*. Oil on canvas. Signed, lower right. 2013. 24 x 24 inches. \$2,800.



197-A. Eva A. WATSON
(American, 1889-1948) *Jungle Peace*. Color woodcut. Edition 49/75. Signed. 1938. 3 foxing spots in bottom margin. 9-1/4 x 7-3/4 inches. [42977c] \$385.

198-P. Evelyn WOODS (American, b. 1956) *Tree #4*. Oil on canvas. Signed, lower right. 2013. 24 x 24 inches. \$2,800.





199-A. YOSHITOSHI Tsukioka (Japanese, 1839-1892) *Yakko of the Kachiya at Yoshicho and Lady Tomoe*. From series *SIX POEMS OF LOVE AND VALOR (ENYU ROKKASEN)*. Color woodblock with *kara zuri*. Signed and with Taiso seal. 1879. Published by Hirose. Carved by Hori Gin. Ōban tate-e. [32338c] \$675.



201-A. YOSHITOSHI Tsukioka (Japanese, 1839-1892) *The Moon of Yamaki Mansion - Kagekado (Yamaki yakata no tsuki - Kagekado)*. Color woodblock with *itame mokuhan*. Signed and with Taiso seal. 1886. Carved by Enkatsu. Ōban tate-e. [32326c] \$700.



200-A. YOSHITOSHI Tsukioka (Japanese, 1839-1892) *Frost fills the camp and the autumn air is still / lines of returning geese cross the moon of the third hour (shimo gunei ni michi shūki kiyoshi / sugyō no hengan tsuki sankō)*. Color woodblock. Signed and with Taiso seal. 1890. Carved by Enkatsu. Ōban tate-e. [32331c] \$750.



202-C. Paul WUNDERLICH (German, 1927-2010) *Acrobatie sur Fond Noir*. Color lithograph. Edition 21/75. Signed. 1969. Printed by Desjobert, Paris. Riediger 343. 26-1/4 x 19-3/4 inches. [30025c] \$825.



203-A. YOSHIDA Hiroshi (Japanese, 1876-1950) *Osaka Castle (Ōsaka-jō)*. Color woodblock. Artist seals in image. Signed and titled in pencil. 1935. Abe 202. Faint spotting verso. Ōban tate-e. [43129c] \$600.



204-A. YOSHIDA Hiroshi (Japanese, 1876-1950) *Daibutsu Temple Gate*. Color woodblock. Artist seals in image. Signed and titled in pencil. 1940. Abe 239. One tiny spot in image. Ōban tate-e. [43128c] \$800.

CATALOG LIST NO. 86 - Fall 2013

PLEASE NOTE: The catalog number for each item also contains a suffix letter which indicates the correct Gallery Department to contact for purchases or for more information, as follows:

-C = Miranda Metcalf - DIRECTOR
Contemporary Prints & Drawings
Phone: (206) 624-1324
Email: miranda@davidsonalleries.com

-A = Dillon Gisch - DIRECTOR
Antique Prints
Phone: (206) 624-6700
Email: dillon@davidsonalleries.com

-P = Jeffery Kuiper - DIRECTOR
Contemporary Painting & Sculpture
Phone: (206) 624-7684
Email: jeffery@davidsonalleries.com

All works are subject to prior sale. All items are guaranteed as described. A certificate of authenticity is available upon request. Please contact the gallery with questions or to discuss a work in detail. Dimensions are given as inches, height precedes width. Orders are shipped promptly upon receipt of full payment. Works are normally shipped insured via U. S. Postal Service unless other arrangements are specified. Shipping charges vary and are dependent on size and value of items ordered. Washington State residents must add 9.5% sales tax. Items may be sent "on approval" beginning two weeks after initial catalog release. Works may be returned to the gallery for any reason within two weeks of purchase for a full refund less shipping. Returned works should be securely packed and fully insured.

Please inform the gallery of any special collecting interests. Davidson Galleries is always willing to consider purchasing or consigning fine original prints either individually or as entire collections.

Davidson Galleries is a charter member of the INTERNATIONAL FINE PRINT DEALERS ASSOCIATION and is committed to its strict ethical standards. 

DAVIDSON GALLERIES

313 Occidental Avenue South, Seattle, WA 98104 • Hours: Tuesday-Saturday 10am-5:30pm
www.davidsonalleries.com

Downloadable Catalogs Available

As part of our commitment to produce less waste, Davidson Galleries is proud to offer our catalogs as **free downloadable PDFs** through DAVIDSONGALLERIES.COM. Simply visit the Publications page on the website to download.

If you would prefer to continue receiving our semi-annual **printed catalogs by mail**, annual subscriptions are available for **\$10**, deductible from your first catalog purchase. Please contact the gallery for details.



Scan this QR code with your smart phone to join our monthly email newsletter list!

FRONT COVER: **205-A. Käthe KOLLWITZ** (German, 1867-1945) *Zwei Schwatzende Frauen mit Zwei Kindern (Two Chattering Women with Two Children)*. Lithograph. Edition 150. Signed. 1930. Kl. 240c, Kn. 250c. 11-3/4 x 10-1/4 inches. [43136c] \$6,200.

DAVIDSON GALLERIES

313 OCCIDENTAL AVE S • SEATTLE, WASHINGTON 98104

WWW.DAVIDSONGALLERIES.COM

CHANGE SERVICE REQUESTED

CATALOG LIST NO. 86 - Fall 2013



206-P. Alexander GORENSTEIN (Russian, b. 1952)
Equilibrium. Oil on canvas. Monogram, bottom right.
2010. 23-1/2 x 39-1/2 inches. \$5,500.

\$5.00