



Summer 2013 Catalog
DAVIDSON GALLERIES



1. John James AUDUBON (French/American, 1785-1851)
Mexican Marmot-Squirrel.
 From VIVIPAROUS QUADRUPEDS
 OF NORTH AMERICA. Lithograph
 with hand-coloring. 1st octavo edition.
 Lithographed by W.E. Hitchcock.
 Printed and colored by J.T. Bowen.
 Octavo. c.5-1/2 x 8-1/2 in.
 [31876c] \$225.



2. Sigmund ABELES (American, b. 1934) *Self portrait (Space issue #1: Italy)*. Drypoint. Signed and numbered 8/50 in pencil. 1977/8. 7 x 5-1/2 in. [31875c] \$600.



3. Karel APPEL (Dutch, b. 1921) *Heads in a Colorful Landscape*. Color lithograph. Signed. Edition 109/200. 1965. 21-1/2 x 28-1/2 in. [42522c] \$600.



4. Albrecht ALTDORFER (German, 1480-1538) *Der Hl. Christophorus Am Ufer Sitzend (Saint Christopher Sitting on the Banks)*. Woodcut. 1515-1520. Good even impression. 4-3/4 x 3-3/4 in. [32370c] \$900.



5. John Taylor ARMS (American, 1887-1953)
From Knoedler's Window MCMXXXV. Etching.
 Signed. 1935. Impression 1936. Fletcher 293 iv/v.
 5-1/8 x 5 in. [42467c] \$700.



6. John James AUDUBON (French/American, 1785-1851) *Snowy Owl*. From BIRDS OF AMERICA. Handcolored lithograph. 9-1/8 x 5-1/8 in. [42738] \$2,200.

JOHN J. AUDUBON

(1785-1851)

Exhibition: July 5-27, 2013

Evening Reception:
Thursday, July 11, 6-8pm

The Antique Print Department is excited to present an important collection of John James Audubon's **Birds of America** and **The Quadrupeds of North America**. Most are from J.T. Bowen's octavo sets of hand-colored lithographs printed at the middle of the 19th Century.



7. Leonard BASKIN
(American, 1922-2000) *Portrait of Courbet*. Wood engraving. Fern 539. Proof outside of LAUS PICTORUM portfolio. 5 x 4 in. [32375c] \$100.



9. Peggy BACON (American, 1895-1987) *The Rival Ragmen*. Drypoint. Signed. 1936/38. Published by AAA. Edition 139. Flint 130. 5-5/16 x 8-15/16 in. [42543] \$750.



8. Leonard BASKIN
(American, 1922-2000) Image from p.27 of A POEM CALLED THE TUNNING OF ELYNOUR RUMMYNGE by John Skelton. Wood engraving on Japan. A separate signed proof. 1953. Published by Gehenna Press, Worcester, MA. Fern 237. Hinge residue verso. 5-1/8 x 3 in. [42463c] \$350.



10. Max BECKMANN (German, 1884-1950) *König Jerum Und Seine Frau, Die Prinzessin Ursula Von Bärwalde bei dem Bösen Helseher Pumperlirio Holzebocke* (King Jerum and his wife, the princess Ursula von Baerwalde, at the dwelling of the wicked clairvoyant Pumperlirio Holzebocke). From FANFERLIESCHEN SCHÖNEFÜßCHEN. Drypoint. Signed in pencil. 1923. 7-3/4 x 5-3/4 in. [32376c] \$3,200.



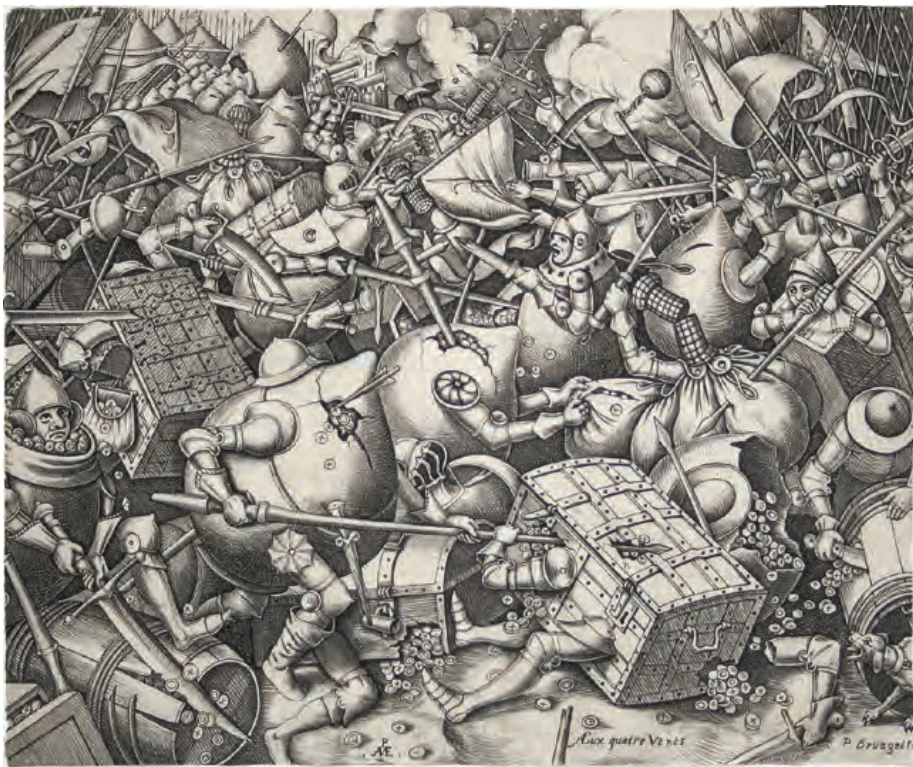
11. ANONYMOUS *The Art of Etching and Engraving*. Engraving. For The UNIVERSAL MAGAZINE, 1748. Usual folds. 7-7/8 x 9 in. [32369c] \$100.



12. Hans Sebald BEHAM (German, 1500-1550) *Judith mit Dienerin nach links schreitend (Judith walking to the left (with the Head of Holofernes))*. Engraving on laid paper. Initials on plate. Trimmed to platemark. Collector stamp verso. Small spot at bottom left of center. Small loss bottom left edge. Good impression. Pauli 12, Bartsch 11. 4-1/2 x 2-7/8 in. [32377c] \$600.



13. George Elbert BURR (American, 1857-1939) *Road to Paradise Valley – Arizona*. Etching. Signed and titled in pencil. Monogram in the plate. Seeber 253. 5 x 7-1/4 in. [28864c] \$750.



14. Pieter BRUEGEL (Dutch, 1525-1569) *Le Combat des Tire-Lires es des Coffres-Forts (The Battle of the Money-bags and Strong-boxes)*. Engraving by Pieter VAN DER HEYDEN. Strong impression. Small loss top edge. Tear top right corner. Bottom right edge replaced. Small surface losses. 1/2-inch tear bottom edge center. Old hinges and tape along top edge. Descriptive panel cropped off. Bastelaer 146a. 8-5/8 x 10-1/2 in. [48482c] \$2,500.



15. Jean-Jacques de BOISSEAU
 (French, 1736-1810) *River Landscape*.
 Etching. c.1774. Tape residue at top and
 minor flaws at edges of sheet. Spots verso.
 5-7/8 x 8 in. [31949c] \$225.



16. Jacques CALLOT
 (French, 1592-1635) *La Halte des
 Bohémiens: les diseuses de bonne
 aventure*. For LES BOHÉMIENS.
 Etching with engraving on laid
 paper. Watermark. Signed in the
 plate. Lorraine, after 1521. Lieure
 376 ii/ii, M.669. Hinge residue
 verso. Trimmed to just outside
 borders. 4-3/4 x 9-1/4 in.
 [42476c] \$850.



17. Jacques CALLOT
 (French, 1592-1635) *La Halte
 des Bohémiens: les apprêts du
 festin*. Etching with engraving on
 laid paper. Watermark. Signed
 in the plate. Lorraine, after 1521.
 Lieure 377 ii/ii, M377. Good, even
 impression. Trimmed to border.
 Repaired 1/4 in. tear in center left
 edge. 4-7/8 x 9-1/4 in.
 [42477c] \$800.



18. Felix BUHOT
 (French, 1847-
 1898) *Une Matinée
 d'Hiver au Quai
 de l'Hôtel-Dieu*.
 Etching and
 drypoint on laid
 paper. Boncard/
 Goodfriend 123, v/
 xv. Signed (twice)
 and titled in open
 panel at bottom
 of plate. Red owl
 stamp. Slightly
 toned.
 9-3/8 x 12-3/4 in.
 [32113c] \$1,800.



19. Giovanni Benedetto CASTIGLIONE (Italian, 1609-1664) *Man With a Long Beard, Wearing a Headdress and Fur Cap, Facing Right.* Etching for LARGE STUDIES OF HEADS IN ORIENTAL HEADDRESS. Edition on thin tissue. From The Collection of 200 (c.1812). Bartsch 48. Backed with thin Japan paper. 7-5/8 x 5-1/4 in. [48481c] \$225.



20. John Sell COTMAN (English, 1782-1842) *Plate 8: Millbank on the Thames.* Soft ground etching. Popham 303. Provenance: Craddock & Barnard, London. 6-1/2 x 10 in. [28307c] \$125.



22. Samuel CHAMBERLAIN (American, 1895-1975) *Amalfi.* Etching. Signed. Edition 18/100. Faint mat burn. 7 x 7 in. [42464c] \$250.



21. Philip CHENEY (American, 1897-1992) *Steamboat Rock, WY.* Lithograph. Signed. 9-3/4 x 13-1/2 in. [32195c] \$265.



23. Samuel CHAMBERLAIN (American, 1895-1975) *Mediterranean Wash Day.* Etching. Signed. 1936. Edition 42/100. 8-1/2 x 12-1/2 in. [32385c] \$425.



24. Lovis CORINTH (German, 1858-1925) *Akt (Nude).* For PAN. Drypoint. 1907. Published state. 6 x 2-5/8 in. [42525c] \$250.



25. Erik DESMAZIERES
(French, b. 1948) *Jardinier*.
Etching. Signed and dated. 1983.
Edition 90/90. Fitch 73.
7-3/4 x 4-1/4 in. [42478c] \$350.



26. Jacques CALLOT
(French, 1592-1635) *Sig. Lucia - Trastullo*. For **BALLI DI SFESSANIA**. Etching. L399 i/ii. 3 x 3-7/8 in. [42469c] \$485.



27. Marc CHAGALL (Russian/French, 1887-1985) *Maternité* by Marcel Arland. Illustrated with five etching by CHAGALL, plus an extra suite of the etchings. #64 from the 60 examples on Vergé de Hollande. Published: Au sans Pareil, Paris. 1926. Sheet: 8-3/8 x 6 in. Images: 6 x 4 in. [42520c] \$4,000.

28. Honoré DAUMIER (French, 1808-1879)

Comment, Madeleine, avez-vous accepté un morceau pareil. (Why, Madeleine, Did You Accept a Piece of Meat Like This?) From ACTUALITÉS.

For LE CHARIVARI (text on verso). Lithograph. HD initial on stone. 1857. Delteil 3014 iii. 8 x 10-1/4 in. [32389c] \$175.



29. Honoré DAUMIER (French, 1808-1879) *Alliance of Bonapartists and Capuchins, Image VI.* From ACTUALITÉS. Lithograph. HD initial on stone. Delteil 2093. Usual text on verso. Repaired tear in upper left corner outside of borderline. 11 x 8-1/2 in. [32391c] \$175.

30. John Silk DECKARD (American, 1928-1994) *Eggman.* Lucite engraving. Signed and titled. Edition: 12/20. Some tape residue verso. 2-1/2 x 2-12 in. [42455c] \$125.



31. Honoré DAUMIER (French, 1808-1879) *L'Artiste Robert Macaire.* From ROBERT MACAIRE. Lithograph for LE CHARIVARI. 1838. Usual text on verso. 10-3/8 x 7-1/4 in. [32390c] \$325.



32. Charles François DAUBIGNY (French, 1817-1878) *Le Berger et la Bergère.* Etching. 1874. Delteil 122, final state. 11-1/4 x 8-3/4 in. [28266c] \$485.



33. Mark FREEMAN (American, 1908-2003) *Steel Lace*. Lithograph. Signed. AP. 10-7/8 x 16-1/8 in. [42454c] \$450.

34. Leon GILMOUR
(American, 1907-1996) *The Oxbow, Kennebecasis River, N.B., Canada*. Wood engraving. Signed. 1984. Edition 21/125; 50 printed. 11-1/4 x 9-1/2 in. [32396c] \$500.



35. William GIVLER (American, 1908-2000) *Figures on beach*. Lithograph. Signed & titled in pencil. 10 x 14-1/2 in. [42484c] \$325.



36. Henry EVANS (American, 1918-1990) *Lily*. Linocut. Signed. 1981. Edition 80/240. 20 x 13 in. [32395c] \$325.



37. Théodore GÉRICAUT (French, 1858-1925) *Chevaux d'Auvergne*. Lithograph. 1822. Delteil 48 ii. 7-1/2 x 9 in. [42449c] \$475.

Francisco José de GOYA y Lucientes (Spanish, 1746-1828)

LOS CAPRICHOS. Etching and aquatint. 5th Edition, printed by the Calcografía. 1881-86.



38. *El Si Pronuncian Y La Mano...* (They say yes and give their hand to the first-comer). Plate 2. [32032] \$625.



39. *Ya Van Desplumados* (There they go plucked). Plate 20. [32050] \$700.



40. *Le descañona* (She fleeces him). Plate 35. [32065] \$750.



41. *Brabísimo!* (Bravissimo!). Plate 38. [32068] \$700.



42. *De que mal morira?* (Of what ill will he die?). Plate 40. [32070] \$785.



43. *Mucho hay que chupar* (There is plenty to suck). Plate 45. [32075] \$750.



44. *Correccion* (Correction). Plate 46. [32076] \$600.



45. *Soplones* (Windbags). Plate 48. [32078] \$700.



46. *Volaverunt* (They have flown). Plate 61. [32091] \$750.



47. *Miren que grabes!*
(Look how solemn they are!).
Plate 63. [32093] \$650.



48. *No te escaparàs*
(You will not escape).
Plate 72. [32102] \$750.



49. *¿No hay quien nos desate?*
(Can't anyone unleash us?).
Plate 75. [32105] \$650.



Francisco José de GOYA y Lucientes (Spanish, 1746-1828)
LOS CAPRICHOS. Etching and aquatint. 10th Edition, printed by the Calcografía. 1918-28.

50. *¡Que se la llevarón!*
(How they carried her off!).
Plate 8. [42471c] \$675.



51. *Están calientes*
(They are hot).
Plate 13. [42472c] \$650.



52. **Francisco José de GOYA y Lucientes** (Spanish, 1746-1828) *Duro es el Paso*. Plate 14. From LOS DESASTRES DE LA GUERRA. Fourth Edition. 10 x 13-1/2 in. [32397c] \$425.



53. **Robert GOFF** (1837-1922) *The South Cone, Brighton*. Etching and drypoint. Watermark. Signed and signed in the plate. 1895. 6-7/8 x 9-7/8 in. [42476c] \$175.



54. Gordon GRANT (American, 1875-1962) *Old Windjammer*. Lithograph. Signed. Edition 250. Published by AAA. 9 x 11-1/2 in. [42465c] \$275.



56. Sir Francis Seymour HADEN (British, 1818-1910) *The Willows*. Drypoint. Signed. Signed and dated 1877 in the plate. Schneiderman 171 iv/vi, D164, H181. Beautiful, rich impression. Lots of burr. 5-7/8 x 8-7/8 in. [32191c] \$320.



57. Kent HAGERMAN (American, 1893-1978) *Trackside, Chicago*. Etching. Signed. 1945. 10-1/4 x 7-3/4 in. [42468c] \$450.



58. William Lee HANKEY (British, 1869-1952) *First Born*. Soft ground etching with fine muslin ground and aquatint. Signed and numbered 31. 1905. Edition 55. Hardie, Salaman 17. One of 20 in monochrome; another 55 in color. 12-3/4 x 9-7/8 in. [42513c] \$2,400.

55. George GROSZ
(German, 1893-1959) *Grimmiger Man (Grim Man)*. Lithograph. Signed in pencil. 1923. Lightly toned. 14 x 10 in. [32398c] \$385.





59. Charles L. GOELLER (American, 1901-1955) *Man reading*. Litho crayon drawing. Signed. 8-1/4 x 12 in. [42511c] \$1,600.

60. HAP GRIESHABER (German, 1909-1981) *Hüpfender Affe (Jumping Monkey)*. Woodcut. Signed. 1962. Edition 54/300. 14-1/4 x 10-1/2 in. [42466c] \$250.



61. HASUI Kawase (Japanese, 1883-1957) *Moon at Umagome (Umagome no tsuki)*. Color woodblock, 1930. Hasui signature in the plate. Artist seal. Watanabe seal. Hotei 165. Oban tate-e. [32316c] \$1,100.



62. HASUI Kawase (Japanese, 1883-1957) *Chūzen Temple, Utagahama (Chūzenji Utagahama)*. Color woodblock. Hasui seal. Hotei Hp-50. 5-7/8 x 3-3/4 in. [32325c] \$190.



63. HASUI Kawase (Japanese, 1883-1957) *Daimotsu, Amagasaki (Amagasaki Daimotsu)*. Color woodblock. Hasui signature in the image. Artist seal. Watanabe seal. 1940. Hotei 335. Ōban tate-e. [32303c] \$850.



64. HASUI Kawase (Japanese, 1883-1957) *Spring dusk and the Tōshō shrine, Ueno (Haru no yū (Ueno Tōshōgū))*. Color woodblock. Hasui signature in the plate. Artist seal. Watanabe seal. 1948. Hotei 509. Ōban tate-e. [32305c] \$750.



65. HASUI Kawase (Japanese, 1883-1957) *Kiyomizu Temple, Kyoto (Kyōto Kiyomizudera)*. Color woodblock, 1933. From COLLECTION OF SCENIC VIEWS OF JAPAN II, Kansai Edition. Hasui signature in the image. Artist seal. Watanabe seal E. Hotei 324. Ōban tate-e. [32150c] \$1,200.



66. HASUI Kawase (Japanese, 1883-1957) *Phoenix hall, Byōdō Temple, Uji (Uji Byōdōin Hōōdō)* From COLLECTION OF SCENIC VIEWS OF JAPAN II, Kansai edition. Color woodblock, 1933. Hasui signature in the image. Artist seal. Watanabe seal E. Hotei 323. Ōban tate-e. [32151c] \$1,000.



67. HASUI Kawase (Japanese, 1883-1957) *Evening at Sōemon-chō, Osaka (Ōsaka Sōemon-chō no yū)*. From COLLECTION OF SCENIC VIEWS OF JAPAN II, Kansai Edition. Color woodblock. Hasui signature in the image. Artist seal. Watanabe seal. 1933. Hotei 318. Ōban tate-e. [32317c] \$650.



68. HASUI Kawase (Japanese, 1883-1957) *Snow in Shiba park (Shiba kōen no yuki)*. Color woodblock. Hasui signature in the image. Artist seal. Watanabe seal. 1931. Hotei 244. Ōban yoko-e. [32308c] \$1,000.

69. (opposite) HIROSADA (Japanese, 1826-1865) *Ōsaka actor portrait*. Color woodblock with shomen-zuri. c. 1848. Published by Ikekichi. Chūban. [32121c] \$275.



70. HASUI Kawase (Japanese, 1883-1957) *Moon over the Ara River, Akahbane (Arakawa no tsuki (Akabane))*. From series: 20 VIEWS OF TOKYO. Color woodblock. 1929. Hasui signature in the image. Artist seal. Watanabe seal. Postwar impression. Hotei 159. Ōban tate-e. [42801c] \$700.



71. HASUI Kawase (Japanese, 1883-1957) *Zensetsu temple, Sanshu (Sanshū Zensetsūji)*. For COLLECTION OF SCENIC VIEWS OF JAPAN II, Kansai edition. Color woodblock. Hasui signature in the image. Artist seal. Watanabe seal. 1937. Hotei 334. Tape residue top and bottom margins. Ōban tate-e. [32321c] \$600.



72. HIROSADA (Japanese, 1826-1865) *Ōsaka actor portrait in the role of Yamanouchi*. Color woodblock with shomen-zuri. c. 1849. Published by Ikekichi. Chūban. [32119c] \$350.



73. HIROSHIGE I (Japanese, 1797-1858) *Chapter III*. From CHUSHINGURA. Color woodblock. c. 1835-39. Signed. Signed Hiroshige ga. Published by Senichi (Izuma Ichibeï). Tanba 429. Ōban tate-e. [32342c] \$650.



75. HIROSADA (Japanese, 1826-1865) *Arashi Rikaku II in the role of Sambasō in HATASUYAGURA TANEMAKI SAMBASŌ (SAMBASO SOWS SEEDS FROM THE NEW TOWER)*, Chigoku Theater. Color woodblock with shomen-zuri. c. 1849. Hirosada Ōsaka Printmaker 57B. Chūban. [32120c] \$325.



74. HASUI Kawase (Japanese, 1883-1957) *Snow at Itsukushima (Itsukushima no yuki)*. Color woodblock. Hasui signature in the image. Artist seal. Watanabe seal. 1932. Hotei 287. Toned. Ōban yoko-e. [32312c] \$550.



76. HASUI Kawase (Japanese, 1883-1957) *Lakeside Shower, Matsue (Chihan no ame (Matsue))*. Color woodblock. 1932. Hasui signature in the image. Artist seal. Watanabe seal. Hotei 269. Ōban yoko-e. [42515c] \$900.



77. HIROSHIGE I (Japanese, 1797-1858) *Tamagawa River*. From *FAMOUS VIEWS OF THE VARIOUS PROVINCES*. Color woodblock. Trimmed to borderline. 4 x 6-1/8 in. [32351c] \$185.



78. HIROSHIGE I (Japanese, 1797-1858) *Evening Glow at Seta*. From *EIGHT VIEWS OF OMI*. Color woodblock. Trimmed just within borderline. 3-7/8 x 6-1/8 in. [32349c] \$175.



79. Stanley William HAYTER (British, 1901-1988) *Perseides*. Viscosity etching. Signed in pencil. Edition 19/50. 1958. 11-1/2 x 14-1/2 in. [32399c] \$1,800.



80. HIROSHIGE I (Japanese, 1797-1858) *Dyer's Quarters, Kanda*. From *100 VIEWS OF EDO*. Color woodblock. 1857. Trimmed to borderline on sides and just outside on top and bottom. Centerfold. Ōban tate-e. [32359c] \$350.



81. HOKUSAI (Japanese, 1760-1849) *Sakanoshite: Station 45*. From *THE FIFTY-THREE STATIONS OF THE TŌKAIDŌ*. Color woodblock. c. 1804. Signed Gakyojin Hokusai ga. Rubbed, minor surface damage. Koban yoko-e. [32356c] \$150.



82. HIROSHIGE II (Japanese, 1826-1869) *Sanjō Bridge of Kyōtō* (*Kyō Sanjō*). From the Tōkaidō series. Color woodblock. 1864. Published by Tsuta-ya Kichizō. Wormage in margins. Some soiling. Chūban. [32353c] \$225.



84. Charles HEANEY (American, 1897-1981) *Biblical Figures*. Drawing with litho crayon. Unsigned. Exhibited at Portland Art Museum. 1974. 6 x 8-1/2 in. [42474c] \$175.



83. (after) Winslow HOMER (American, 1836-1910) *Ship Building, Gloucester Harbor*. Wood engraving for HARPER'S WEEKLY. 1873. 9-3/8 x 13-3/4 in. [42459c] \$250.



85. (after) Winslow HOMER (American, 1836-1910) *Waiting for a Bite*. For HARPER'S WEEKLY. Wood engraving by Lagarde. August 22, 1874. Light toning. 10-1/2 x 15-3/8 in. [42456c]. \$300.

86. (after) Winslow HOMER (American, 1836-1910) *The Army of the Potomac -- a Sharpshooter on Picket Duty* From HARPER'S WEEKLY. Wood Engraving. Homer engraved on block. 1862. Small loss of edge of sheet well away from image. 9-1/8 x 13-3/4 in. [32400c] \$750.



87. Richard HUNT (American, b. 1935) *Untitled*. For DETAILS (suite of 8 images). Color lithograph. Signed. Feb. 1965. 15/20. Kenneth Tyler and Tamarind (#1239) chops. 15 x 15 in. [32401c] \$450.

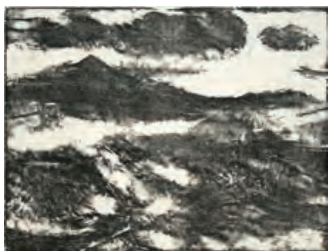


88. Peter ILSTED (Dutch, 1861-1933) *Young Girl by a Semi-circular Table*. Color mezzotint. Signed. 1909. 6-1/8 x 7-3/4 in. [42506c] \$900.

89. Alfred HUTTY (American, 1877-1954) *Return from the Market*. Drypoint. Signed. Selected as one of fifty best prints of 1927. 10-1/4 x 8-3/8 in. [32188c] \$475.



90. Friedensreich HUNDERTWASSER (Austrian, 1928-2000) *Eyebalance Number Five*. Image #1 from REGENTAG PORTFOLIO (LOOK AT IT ON A RAINY DAY). Silkscreen in 26 colors, selective varnish and 4 metal imprints. Total variable edition, 3000. Printed by Dietz Offizin and published by Ars Viva, Zurich. 1971/72. Koschatzky 44, HWG 44. 20 x 27 in. (sheet). [42614c] \$1,500.



91. John Paul JONES (American, 1924-1999) *Landscape*. Wood engraving. Signed. Edition 34/75. 9 x 12 in. [32405c] \$150.



92. Pierre-Georges JEANNIOT (Swiss/French, 1848-1934) *At the Seaside*. Etching and drypoint. Unsigned. Name incised in the plate. c. 1890. Published state. Printed in Vienna. 5-3/4 x 8-1/8 in. [28262c] \$165.



93. Nisaburo, ITO (1914-1988) *The Hot Springs at Arima (Arima Onsen)* Color woodblock. Published by Uchida. c.1940. 14-3/4 x 10-1/2 in. [32274c] \$385.



94. KASAMATSU Shiro (Japanese, 1898-1991) *The Great Lantern of the Senso Temple, Asakusa District, Tokyo*. Color woodblock. 1934. Oban tate-e. [42502c] \$650.

95. Luigi KASIMIR (Austrian/American, 1881-1956) *N.Y. Park Avenue*. Color etching & aquatint. Signed. 17 x 10-5/8 in. [42508c] \$1,250.

96. KIYOCHIKA

Kobayashi (Japanese, 1847-1915) *Hazy Moon at Ushimachi, Takanawa* (*Takanawa Ushimachi ryogetsu kei*). Color woodcut. Signed and titled. 1879. Published by Fukuda Kumajirō. Ōban yoko-e. [32273c] \$1,600.

**97. Ernst Ludwig**

KIRCHNER (German, 1880-1938) *Two Brothers*. From NEBEN DER HEERSTRASSE.

Woodcut in text. 1923. Provenance: F. Roten Galleries, Baltimore, MD. Faint toning. Minor damage in top right corner well away from image. 3-1/4 x 2-7/8 in. [32406c] \$125.

**98. Kaoru KAWANO**

(Japanese, 1916-1965) *Owl*. Color woodblock. c. 1950. Signed. 9-1/4 x 14-3/4 in. [42507c] \$275.



99. Lois KEELER (American, 1904-1997) *Flowers of the Mountain Meadows #2*. Dry pigment stencil. Signed and titled in pencil. Edition 1/25. 8-1/4 x 6 in. [31122c] \$220.



100. Lois KEELER (American, 1904-1997) *Bleeding Heart*. Dry pigment stencil. Signed, titled, dated and numbered in pencil. Lightly toned. Tape along edges verso. 3-1/2 x 2-7/8 in. [31125c] \$125.



101. Lois KEELER (American, 1904-1997) *Growth*. Dry pigment stencil. Signed, titled, dated and numbered in pencil. Very faint spotting. 9-3/4 x 4-3/8 in. [32276c] \$225.



102. Gene KLOSS (American, 1903-1996) *Jesters Cooling Off*. Etching. Signed. Edition 46/75. Plate 1936. Impression 1973. 7-1/2 x 9 in. [42519c] \$1,400.



103. KOITSU Tsuchiya (Japanese, 1870-1949) *Snow at Ukimido, Katata*. Color woodblock. 1934. Published by Watanabe Shōzaburō. Ōban tate-e. [42610c] \$600.



104. Max KLINGER (German, 1857-1920) *Psyche Und Der Adler Jupiters (Psyche and Jupiter's Eagle)*. Etching with chine collé. Unsigned. Singer 100. 14-1/4 x 10-3/8 in. [32410c] \$750.



105. Ronald KOWALKE (American, b. 1936) *New England Monument*. Etching. Signed. Edition 66/100. Published by F. Roten Galleries. 5-3/4 x 8-3/4 in. [32412c] \$125.



106. Max KLINGER (German, 1857-1920) *Verfolgter Centaur (Pursued Centaur)*. From *INTERMEZZOS*. Etching & Aquatint. Unsigned. 1881. Singer 54. Scattered foxing, mostly marginal. 6-7/8 x 14-9/16 in. [32411c] \$300.



107. Käthe KOLLWITZ (German, 1867-1945) *March of the Weavers (Weberzug)*. Sheet 4 from *A WEAVERS' REVOLT (EIN WEBERAUFSTAND)* cycle, 1893-1897. Line etching and sandpaper. Von der Becke Munich blind-stamp lower right corner. Posthumous impression. Knesebeck 36, vd; Klipstein 32, ivb. 11-3/4 x 8-1/2 in. [42895c] \$485.



108. Käthe KOLLWITZ (German, 1867-1945) *Charge (Losbruch)*. Sheet 5 from the *PEASANTS' WAR (BAUERNKREIG)* cycle, 1902/3. Line etching, drypoint, reserpage and soft-ground etching. Signed and signed in the plate. Lifetime impression. Knesebeck 70, viiib; Klipstein 66, viii. 23-1/2 x 20-1/4 in. [42609c] \$3,600.



109. KUNIYOSHI Utagawa (Japanese, 1797-1861) *Yoshinaka's warrior-mistress Tomoe-Gozen at Awazugahara*. From the YÖBU HAKKEI. Color woodblock. Published by Enshūya Hikebei. Signed Ichiyūsai Kuniyoshi ga, with Kiri seal. 1852. Mera and Watanabe censor seals. Faint centerfold. Ōban tate-e. [32304c] \$650.



110. KUNICHIKA Toyohara (Japanese, 1835-1900) *Mother and Child*. From: 24 HOURS OF HAPPENINGS. Color woodblock. Published by Fukuda Kumajiro. c.1860. Ōban yoko-e. [42611c] \$425.



111. KUNIYOSHI Utagawa (Japanese, 1797-1861) *Tametomo at the age of 13 catching arrows shot at him by two of the Emperor's guard in a competition with Shonagon Nyudo Shinsei*. From 10 FAMOUS EXCELLENCIES OF TAME TOMO. Color woodblock. Signature Ichiyusai Kuniyoshi ga. Yoshi Kiri seal of the Hideyoshi family. 1848. Published by Ariyata Seiemon. Hama and Kinugasa censor seals. Robinson S64.1. Collector's seal below cartouche. Ōban tate-e. [32340c] \$425.



112. KUNIYOSHI Utagawa (Japanese, 1797-1861) *The Boar, Yamamoto, striding through the snow in straw cloak and cap, carrying a bamboo pole*. From SELECTION FOR THE TWELVE SIGNS. Color woodblock. Signed "Ichiryusai Kuniyoshi ga" with Yoshi Kiri (Hideyoshi family) seal. c. 1845. Published by Ibayu Kyubei. Censor Mera. Robinson S38.12. Ōban tate-e. [32332c] \$400.



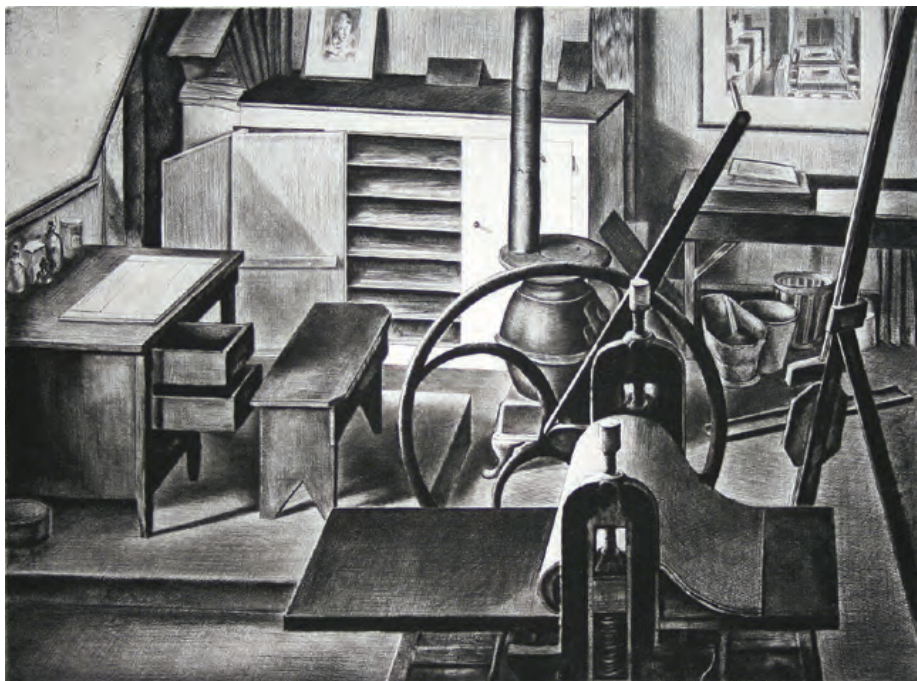
113. Nat LOWELL (American, 1880-1956) *The United Nations Building*. Etching. Signed. Published by Associated American Artists. 9-3/4 x 12-3/4 in. [42487c] \$250.



114. Ohara KOSON (Japanese, 1877-1945) *Crow*. Color woodblock. 3-1/2 x 5-1/2 in. [32289c] \$275.



115. James LAWRENCE (American, 1910-2006) *Washoe Valley Poplars*. Lithograph. Signed. 1938. Edition 14/25. 9 x 13 in. [32416c] \$165.



116. Armin LANDECK (American, 1905-1984) *Studio Interior #1*. Drypoint. Signed in pencil. 1935. Edition 100. 8 x 10-5/8 in. [32414c] \$2,400.

117. Jean Emile LABOUREUR
(French, 1877-1943)
La Petite Plage.

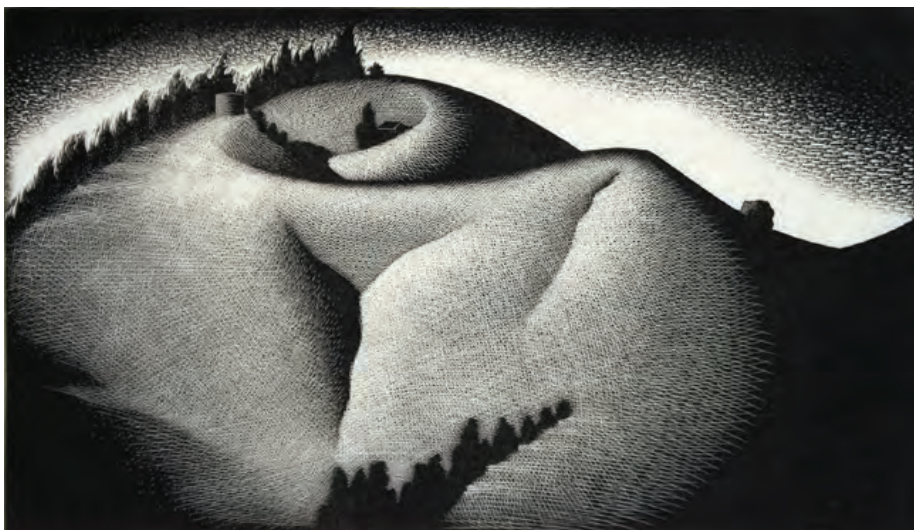
Etching with engraving. Signed and numbered in pencil. Initialed and dated in plate. 1926. Edition 32/70. Labourer 327 iii. 5 x 6-1/2 in. [14831] \$850.



118. Maxime LALANNE (French, 1827-1886) *À Fribourg en Suisse.* Etching. Signed and titled in plate. Published state. 3-3/4 x 6-1/2 in. [32413c] \$100.



119. Auguste LEPÈRE (French, 1849-1918) *Le Pont de St. Cloud.* Etching. Edition 9/35. Blindstamp lower right margin: "Sagot editeur, Paris". 3-5/8 x 8-7/8 in. [28260c] \$170.



120. Paul LANDACRE (American, 1893-1963) *Hill.* Wood engraving on imitation Japan. Signed, titled and numbered in pencil. 1936. Edition 47/60. Lehman p.165, LACMA #17. Hinge remnants. 5 x 8-3/4 in. [42606] \$4,600.



121. Russell Theodore LIMBACH (American, 1904-1971) *Approaching Storm*. Etching and aquatint. Signed. France watermark. Hinge remnants. 8-7/8 x 11-7/8 in. [32197c] \$350.

122. Sir Thomas LANDSEER (British, 1794-1880) *The Muse saw it upward rise*. From MONKEYANA. Etching printed chine collé. 1828. Published by Moon, Boys & Graves. 8 x 6-1/4 in. [32415c] \$100.



123. Auguste LEPÈRE (French, 1849-1918) *L'Abreuvoir au Pont Marie, Paris*. Etching on laid paper. 1902. Toned and two small, repaired tears in bottom and left margin. One inch long tear, also repaired, in upper margin coming to edge of image. 7-3/4 x 10-5/8 in. [28281c] \$165.



124. MAKI Haku (Japanese, 1924-2000) *Poem 79-5* Concrete relief print. Signed. 1979. Edition: 20/203. 9-3/4 x 8-1/2 in. [42503] \$400.



125. MAKI Haku (Japanese, 1924-2000) *Poem 79-4* Concrete relief print. Signed. 1979. Edition: 55/203. 9-3/4 x 8-1/2 in. [42504] \$400.



126. Henri MATISSE (French, 1869-1954) *Nu assis dans un fauteuil, une jambe repliée*. Lithograph. Signed. 1922. Edition 44/50. Duthuit 420. 15-7/8 x 9-3/4 in. [42607c] \$7,500.



127. Charles MERYON (French, 1821-1868) *Rue Des Chantres*. Etching. 1862. Edition 100. Delteil 42 vii/ix. Very faintly toned in the margins where not covered by mat. 11-3/4 x 5-3/4 in. [42488c] \$1,200.



128. Charles MERYON (French, 1821-1868) *La Rue des Toiles à Bourges*. Etching on Japan paper. 1853. Delteil 55 vi/vii. Faintly light-struck where not covered by mat. 7-5/8 x 4-1/4 in. [32189c] \$850.



129. Charles MERYON (French, 1821-1868) *Passerelle du Pont-au-Change, après l'incendie de 1621*. Etching and drypoint printed chine collé. For GAZETTE DES BEAUX-ARTS. 1860. Deltel 50, vii/vii. 4-3/4 x 8-3/4 in. [42453c] \$650.



130. Charles MERYON (French, 1821-1868) *L'Ancien Louvre d'après un peinture de Zeeman (The Old Louvre after a painting by Zeeman)*. Etching. 1866. Delteil 53 v/vi. 6-1/2 x 10-1/2 in. [42462c] \$1,150.

- 131. William MCDOWELL** (British, 1888-1950) *In Manila Harbour*. Monochrome gouache. Signed. 1941. 10-1/4 x 17 in. [42485c] \$650 (framed).



- 132. Peter MILTON** (American, b. 1930) Sequence I, Plate 4 from *THE JOLLY CORNER* by Henry James. Resist-ground etching and engraving. Signed, titled, and dated in pencil. 1971. Edition 81/90. Printed by Robert Townsend. Published by F. Roten Galleries, Baltimore, MD. 10 x 15 in. [32422c] \$485.



- 133. Ferdinand MICHL** (Czech, 1877-1951) *Puppet Theater*. Color etching and aquatint. Signed. c.1920. 81/200. 13-1/4 x 15-3/4 in. [31878c] \$600.

- 134. Jean-François MILLET** (French, 1814-1875) *Paysan Rentrant du Fumier* (*Peasant carrying manure*). Etching. 1855. Delteil 11 iii. 6-1/2 x 5-1/8 in. [32118c] \$4,800.



- 135. Robert MARX** (American, b. 1927) *Untitled (Head of a Crow)*. Etching. Signed. 1969. Printer's blindstamp in bottom corner. Artist proof. 4-1/2 x 5-1/2 in. [32421c] \$285.



136. Francisco MORA (Mexican, 1922-2002) *Planeación*. Linocut. 1949. Signed and dated in pencil. Artist proof. Crease into image. 9 x 3-5/8 in. [30476c] \$750.



137. Francisco MORA (Mexican, 1922-2002) *El Regreso*. Linocut. 1948. Signed and dated in pencil. 4-1/8 x 5-1/4 in. [30486c] \$500.



138. Francisco MORA (Mexican, 1922-2002) *Dining Room*. Linocut. 1943. Signed and dated in pencil. Edition 2/15. Spots along left margin, away from image. 7-7/8 x 11 in. [30491c] \$750.



139. Francisco MORA (Mexican, 1922-2002) *Minero Con Dinamita...* Linocut. Signed. 1947. 4-3/8 x 2-1/4 in. [30487c] \$650.



140. Francisco MORA (Mexican, 1922-2002) *Mercado de San Juan...* Lithograph. Signed and dated in pencil. 1944. Edition 9/14. 9-1/4 x 11-3/4 in. [30499c] \$900.



141. Emil NOLDE (German, 1867-1956)
Tischgesellschaft. From ZEITSCHRIFT FÜR BILDENE
KUNST (no. 2, 1907). Etching with aquatint. Unsigned.
1906. One of twelve trial proofs outside the original
edition of 20. Published by E.A. Seeman, Leipzig.
6 x 7-1/2 in. [32423c] \$750.



142. MORI Yoshitoshi (Japanese, 1898-
1982) *Unknown Title (Man in a Dragon
Costume)*. Color woodblock. Signed.
10 x 9-3/4 in. [32122c] \$325.

OKAMURA Kichiemon (Japanese b. 1916) *Print from Japanese "Alphabet"
Series*. Handstencil-dyed print on Kozo paper, ca. 1960. Sealed but not signed.
Unnumbered edition. 17-1/2 x 13-1/4 (each sheet). \$165 each.



143. [32131c]



144. [32133c]



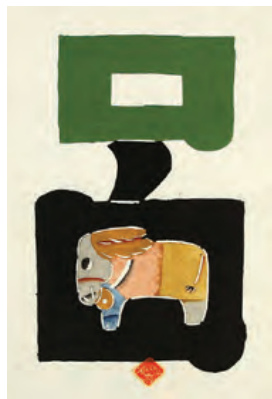
145. [32125c]



146. [32123c]



147. [32134c]



148. [32130c]



149. Gabriel or Adam PERELLE (French, 17th century) *Picnic by a River*. Engraving on laid paper. Published chez Poilly à la Belle Image, Paris. 9-1/2 x 13 in. Very light soiling. 9-1/2 x 13 in. [28638c] \$375.



150. Gabriel or Adam PERELLE (French, 17th century) *View with ruins*. Etching. Published by Drevet. Partial watermark. 9-3/8 x 13 in. Light soiling. 9-3/8 x 13 in. [32143c] \$385.



151. OKUYAMA Gikachiro (Japanese, 1907-1981) *Lake Kawaguchi*. Color woodblock. Signed and titled in pencil. 1948. Ōban yoko-e. [31003c] \$250.



152. Agnes NANOGAK (Inuit, 1925-2001) *Two Birds*. Stonecut. From Holman Island, Northwest Territories. Unnumbered edition. 3-1/2 x 5-1/2 in. [28288c] \$100.



154. Joseph PENNELL (American, 1857-1926) *Caissons on Vesey Street*. Etching and drypoint. Signed on tab, lower right. 1924. Edition c.75. Wuerth 854. 14 x 9-3/8 in. [42460c] \$1,100.

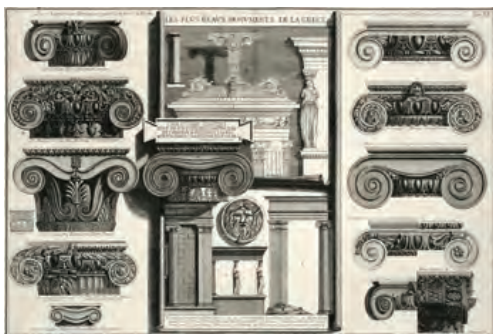


153. Claes OLDENBURG (Swedish/American, b. 1929) *A Piece of Cake*. For ONE CENT LIFE. Color lithograph in text. 1963. Sheet: 16 x 11-1/2 in. [32424c] \$215.

155. Giovanni Battista PIRANESI (Italian, 1758-1810) *Vestigi del Tempio di Giove Tonans Temple of Jupiter Tonans [Jupiter the Thunderer] in Rome. Tav 7 for ALCUNE VEDUTE DI ARCHI TRIONFALI.* Etching. 1748. 5 x 11-1/2 in. [32426c] \$325.



156. Giovanni Battista PIRANESI (Italian, 1758-1810) *Pianta dell'antico Foro Romano (Plan of the Ancient Roman Forum)* From *LE ANTICHITÀ ROMANE*. Etching. Focillon 222, Wilton-Ely 357. 18-1/4 x 18-5/8 in. [32140c] \$500.



157. Giovanni Battista PIRANESI (Italian, 1758-1810) *Les Chapiteaux Ioniques Que L'on Voit a Rome.* For the series *LES PLUS BEAUX MONUMENTS...* Etching. Focillon 949, Wilton Ely 780. 15-1/2 x 23-1/2 in. [32139c] \$450.



158. Giovanni Battista PIRANESI (Italian, 1758-1810) *Veduta Della Villa Estense in Tivoli.* (View of the Villa d'Este, Tivoli). For *VEDUTE DI ROMA*. Etching. Hind 105 i / iii, Focillon 826. 18-1/4 x 27-1/2 in. [42489c] \$2,100.



159. Odilon REDON (French, 1840-1916) *Falling Flowers and the Head of a Python* (*des Fleurs Tombent, et le Tête d'un Python*) From LA TENTATION DE SAINT-ANTOINE, 3rd series. Lithograph printed chine collé. 1896. Scattered foxing, mostly in margins. 10-3/4 x 7-3/4 in. [32427c] \$750.



160. Pierre-Auguste RENOIR (French, 1841-1919) *Femme au cep de Vigne, lère variante*. Lithograph. Signed in the stone. 1904. Edition 1000. Stella 45 ii/ii. 7 x 4-1/2 in. [42518c] \$2,200.



161. Plan/view A Description of Old Jerusalem (*An imaginary plan*) according to Juan Bautista Villalpand(us)o (1552-1608). Vol. 1, 2nd. Ga. R. Hand-colored engraving. London, 1732. Usual centerfold. 12 x 17-5/8 in. [32279c] \$325.



162. Giovanni Battista PIRANESI (Italian, 1758-1810) *Veduta del Campidoglio di fianco*. For VEDUTE DI ROMA. Etching. Fleur de lis watermark in double oval. Hind 39 ii/vi. Tape residue verso at outer edge of wide margins. 16 x 27 in. [42490c] \$1,800.



163. Georges ROUAULT (French, 1871-1958) *Death Took Him As He Rose from a Bed of Nettles*. Plate 45 for *The MISERERE*. Etching & Aquatint. Unsigned as always. 1948. Edition 450. Vollard watermark. 21 x 13 in. [32429c] \$1,200.



164. Salvator ROSA (Italian, 1615-1673) *Shepherd*. Etching with drypoint. 1660-1661. Bartsch 22, Wallace 98. Very lightly stained. 4-1/4 x 6-1/2 in. [42470c] \$375.



165. (after) DAVID ROBERTS (Scottish, 1796-1864) *The Dead Sea Looking Towards Moab*. Hand-colored lithograph mounted on card. Dated April 14, 1839. 9-1/4 x 13-1/4 in. [32141c] \$350.



166. (after) David ROBERTS (Scottish, 1796-1864) *Portion of the Eastern Portico, Baalbec*. Lithograph with hand color. 14 x 20 in. [HK120] \$1,950.



167. John SLOAN (American, 1871-1951) *The Bandit's Cave*. Etching. Signed. 1920. Morse 195 vii/viii. 7 x 5 in. [31795c] \$1,250.



168. John SLOAN (American, 1871-1951) *Return From Toil*. Etching. 1915. Signed and dated in the plate. Morse 175, unsigned proof. 4-1/4 x 5-3/4 in. [32430c] \$485.



169. John SLOAN (American, 1871-1951) *Little Woman*. Etching. Signed. 1920. Edition 100. Morse 193 iv/iv. 2-3/8 x 3-3/4 in. [31987c] \$600.



170. John SLOAN (American, 1871-1951) *Connoisseurs of Prints*. For the NEW YORK LIFE series. Etching. Signed. 1905. Edition 100. Morse 127, only state. 5 x 7 in. [31972c] \$7,500.

171. John SLOAN (American, 1871-1951) *Girls Sliding.* Etching. Signed 1915. Edition 100. Morse 171 iv/iv. Stretch holes at margin edge. 4-1/4 x 6 in. [31980c] \$2,400.



172. Joseph Constantin STADLER (British, fl. 1780) *View of the Junction of the Thames and Canal near Leeblade.* Hand-colored etching and aquatint. 1793. Published by J.J. Boydell. 8-3/8 x 12-1/2 in. [32144c] \$225.



173. Frank STACK (American, b.1937) *House Across the Street.* Etching. Signed. Edition 41/50. 5-3/4 x 7-3/4 in. [32431c] \$125.



174. John SLOAN (American, 1871-1951) *Jewelry Store Window.* Etching. Signed. 1906. Edition 100. Peter Platt impression. Morse 140 ii/ii. Stretch holes at margin edges. 5-3/4 x 3-3/4 in. [31973c] \$3,000.



175. SHIZUO FUJIMORI (Japanese, 1891-1943) *Atagoyama Radio Station.* Image 13 from 100 VIEWS OF NEW TOKYO. Color woodblock. 1928/32. 9-3/8 x 7 in. [17223c] \$485.





176. Dick SWIFT
(American, 1918-2010)
Warm Sanctuary.
Viscosity etching.
Signed. 1967. Edition
27/50. 7-5/8 x 4-5/8 in.
[42436c] \$325.



177. Charles SURENDORF
(American, 1906-1979)
Golden Gate Bridge.
Wood engraving.
Signed. 4th Edition
(100). 6-1/4 x 5 in.
[42473c] \$325.



179. Frank STACK (American, b.1937) *House Next Door.* Etching. Signed. 1975. Edition 28/100. 8-7/8 x 11-3/4 in. Annotated: to Jim McCormick July 1975. 8-7/8 x 11-3/4 in. [32434c] \$150.

178. Theophile Alexandre STEINLEN
(French, 1859-1923) *Chanson du Soir.* Etching and drypoint on Arches with remarque at the bottom of the plate. 10 x 7-1/2 in. [28337c] \$325.



180. Theophile Alexandre STEINLEN (French, 1859-1923) *Les Femmes de France.* For CHANSONS DES FEMMES. Lithograph. 1897. Edition 100. Crauzet 192, only state. Binding holes near edge of left margin. 8 x 5-7/8 in. [28331c] \$175.



181. Sir Frank SHORT (English, 1857-1945) *A Wintry blast on the Stourbridge Canal (West Midlands, Worcestershire).* Drypoint. Signed. Titled and monogrammed in plate. Goulding impression. Edition 50. Hardie 264. Very faint toning where not covered by original mat. 6-7/8 x 9-7/8 in. [32117c] \$500.



182. Rufino TAMAYO (Mexican, 1899-1991) *Figure en Verde*. Mixograph. Signed. 1977. Edition 83/100. Pereda 230. 17-3/4 x 12-1/4 in. [32025c] \$2,400.



183. TSURUZO Ishii (Japanese, 1887-1973) *Hot Springs "Onsen"*. Color woodblock. 1954. Ōban yoko-e. [17218c] \$275.



184. TANAKA Ryohei (Japanese, b. 1933) *Drying Fishing Nets*. Etching. Signed. 1966. Edition 48/100. 6-1/2 x 8-1/8 in. [42505c] \$285.



185. Rufino TAMAYO (Mexican, 1899-1991) *Peces*. Color lithograph. Signed. 1973. Edition 4/75. Published by Ediciones Poligrafia. Pereda 139. 22 x 29-7/8 in. [32278c] \$2,200.



186. (after) **Anthony VAN DYCK** (Netherlandish, 1599-1641) *Nicolas Rockox (Bourgmestre d'Anvers (1560-1640))*. Engraved by Paul PONTIUS (1603-1658), pupil of Lucas Vorsterman. Mauquoy-Hendrickx 115, i/x. Strong, even impression. 10-1/8 x 7 in. [25244] \$450.



187. **Andy WARHOL** (American, 1928-1987) *Marilyn Monroe, I Love You*. Diptych for ONE CENT LIFE. Color lithograph. 1964. Published by E.W. Kornfeld. Tape residue verso. 16 x 11-1/2 in. (each sheet). [42439c] \$500.

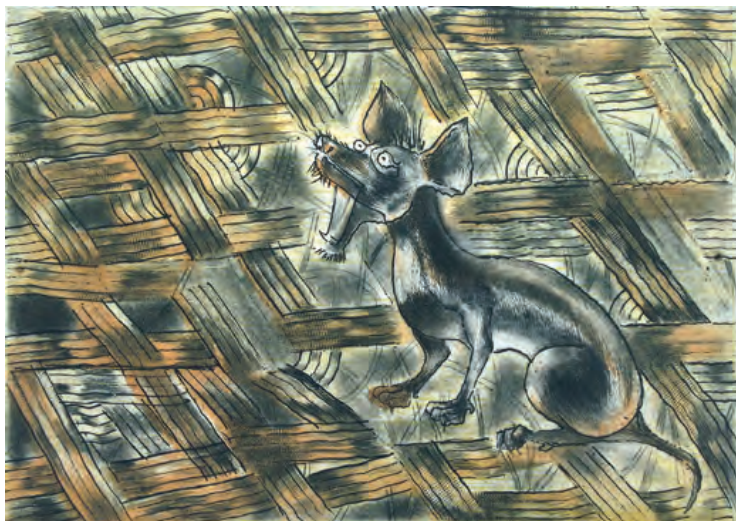
188. **Douglas WARNER** (American, b. 1930) *Pyramid IV*. Color lithograph. 1976. Edition 22/40. Annotated: "Jim - a good summer always - Doug". 11 x 16-1/2 in. [42440c] \$150.



189. **Maurice de VLAMINCK** (French, 1876-1958) *Street scene*. From LES HOMMES ABANDONÉS. Lithograph from separate suite of 25 on old Japan paper. 1927. Total edition of 355. Published by Marcel Seheur, Paris. 7-3/4 x 5-3/4 in. [28293c] \$225.

190. **Sadao WATANABE** (Japanese, 1913-1998) Color stencil. Signed 1964. Edition 25/50. 26 x 22-1/2 in. [31229c] \$2,200.

- 191. Francisco TOLEDO**
 (Mexican, b. 1940)
Barking Dog.
 Color etching and aquatint. Signed.
 Edition 22/30.
 5 x 6-3/4 in.
 [42894] \$950.



- 192. George WRIGHT** (American, 1872-1951) *WPA is Wonderful.*
 Etching and drypoint. Signed and titled. Tape residue in top margin, well away from image.
 9-3/8 x 12-1/2 in. [42512c] \$275.



- 193. Lynd Kendall WARD** (American, 1905-1985)
Clouded Over. Wood engraving on thin tissue, 1944. Signed. Illustrated in "American Prize Prints of the 20th Century". 6 x 8-7/8 in. [42896c] \$875.



- 194. John W. WINKLER** (American, 1890-1979)
(La) Maison des Saintes, Rouen. Etching. Signed.
 1926. 12-1/4 x 7-1/4 in. [42450c] \$425.



- 195. Stow WENGENROTH** (American, 1906-1978) *The Gray Coast* (Port Clyde, Maine. December, 1944). Lithograph. Signed. Edition 60. Stuckey 139. Slightly lightstruck where not covered by original matting. 12-1/2 x 16-1/4 in. [42510c] \$600.



- 196. (after) J. WEBBER** (British, 1751-1793) *A Man of Prince William's Sound.* From CAPTAIN WILLIAM'S SOUND. From CAPTAIN COOK'S THIRD VOYAGE. Engraving by John BASIRE (1730-1802) after the expedition drawing. 12-1/4 x 9-1/2 in. [32147c] \$275.



- 198. June WAYNE** (American, 1918-2011) *The Anniversary.* From JOHN DONNE SERIES. Color lithograph. c.1958. Edition 19/35. 20-1/2 x 16-3/8 in. [30589c] \$1,200.



- 197. (after) J. WEBBER** (British, 1751-1793) *A Woman of Prince William's Sound.* From CAPTAIN WILLIAM'S SOUND. From CAPTAIN COOK'S THIRD VOYAGE. Engraving by John BASIRE (1730-1802) after the expedition drawing. 12-1/4 x 9-1/2 in. [32146c] \$250.



199. John W. WINKLER (American, 1890-1979) *North End - Telegraph Hill*. Etching on Japan paper. Signed. 1918. 9-1/2 x 7 in. [32443c] \$400.



200. John W. WINKLER (American, 1890-1979) *View from Telegraph Hill*. Etching. Signed. 1919. 3-3/4 x 5-1/8 in. [32441c] \$350.



201. James Abbott McNeill WHISTLER (American, 1834-1903) *The Rag Gatherers*. Etching. Signed and dated in the plate. Kennedy 23 v/v. 6 x 3-1/2 in. [42479c] \$1,200.



202. James Abbott McNeill WHISTLER (American, 1834-1903) *Billingsgate*. Etching. Signed and dated in the plate. 1859. Kennedy 47, vii. One of 100 impressions on Japan paper. Printed with wide margins. Toned. 6 x 9 in. [42483c] \$1,500.



203. YOSHITOSHI Tsukioka (Japanese, 1839-1892) *The Moon at Takakura: Hasebe Nobutsura*. SCENE #36 from 100 VIEWS OF THE MOON. Color woodblock. 1886. Published by Akiyama Buemon. Ōban tate-e. [32339c] \$325.



204. YOSHITOSHI Tsukioka (Japanese, 1839-1892) *A poem by Mizuki Tatsunosuke*. From 100 VIEWS OF THE MOON. Color woodblock. Sealed Taïso. 1886. Published by Akiyama Buemon. Ōban tate-e. [32328c] \$750.



205. YOSHITOSHI Tsukioka (Japanese, 1839-1892) *Nitta Shitē Tadatsune with a torch in a cavern*. From YOSHITOSHI'S WARRIORS TREMBLING WITH COURAGE. Color woodblock. Signed Yoshitoshi. Sealed Taïso. 1883. Published by Kobayashi Tetsujirē in the early-mid 1890s. Ōban tate-e. [42499c] \$700.



206. YOSHITOSHI Tsukioka (Japanese, 1839-1892) *A poem by Mizuki Tatsunosuke*. From 100 VIEWS OF THE MOON. Color woodblock. Sealed Taïso. 1891. Published by Akiyama Buemon. Stevenson 94. Ōban tate-e. [32329c] \$650.

207. **YOSHIDA Toshi** (Japanese, 1911-1995) *Ishiyama Temple*. Color woodblock. Oban Tate-e. [32295c] \$385.



208. **YOSHIDA Hiroshi** (Japanese, 1876-1950) *Seta Bridge*. Color woodblock. Sealed. Signed in pencil. 1933. Abe 182. Oban yoko-e. [32293c] \$500.

Catalog List 85 - Summer 2013

ANTIQUe PRINT DEPARTMENT

Sam Davidson sam@davidson galleries.com • Dillon Gisch dillon@davidson galleries.com

Phone: (206) 624-6700 • Fax: (206) 624-4588

All works are subject to prior sale. All items are guaranteed as described. A certificate of authenticity is available upon request. Please contact the gallery with questions or to discuss a work in detail. Dimensions are given as inches, height precedes width. Orders are shipped promptly upon receipt of full payment. Works are normally shipped insured via U. S. Postal Service unless other arrangements are specified. Shipping charges vary and are dependent on size and value of items ordered. Washington State residents must add 9.5% sales tax. Items may be sent "on approval" beginning two weeks after initial catalog release. Works may be returned to the gallery for any reason within two weeks of purchase for a full refund less shipping. Returned works should be securely packed and fully insured.

Please inform the gallery of any special collecting interests. The Antique Print Department is always willing to consider purchasing or consigning fine original prints either individually or entire collections.

Davidson Galleries is a charter member of the INTERNATIONAL FINE PRINT DEALERS ASSOCIATION and is committed to its strict ethical standards.



DAVIDSON GALLERIES

313 Occidental Avenue South, Seattle, WA 98104 • Hours: Tues-Sat 10am-5:30pm
www.davidson galleries.com



Downloadable Catalogs Available

As part of our commitment to produce less waste, Davidson Galleries is proud to offer our catalogs as **free downloadable PDFs** through **DAVIDSONGALLERIES.COM**. Simply visit the Publications page on the website to download.

If you would prefer to continue receiving our semi-annual **printed catalogs by mail**, annual subscriptions are available for **\$10**, deductible from your first catalog purchase. Please contact the gallery for details.



Scan this QR code with your smart phone to join our monthly email newsletter list!

ON THE COVER: 209. (after) **Joan MIRÓ** (Spanish, 1893-1983) *Le Chien Bleu*. Color etching & aquatint. Signed. 1959. Edition 300. Printed by Crommelynck. Published by Maeght. M. 1714. 24-1/4 x 18-3/4 in. [42446c] \$12,500.

DAVIDSON GALLERIES

313 OCCIDENTAL AVE S • SEATTLE, WASHINGTON 98104
WWW.DAVIDSONGALLERIES.COM

CHANGE SERVICE REQUESTED

CATALOG LIST NO. 85 SUMMER 2013



210. HASUI Kawase (Japanese, 1883-1957) *Sakurada Gate* (*Sakuradamon*). From *TWENTY VIEWS OF TOKYO*. Color woodblock. 1928. Hotei 156. Watanabe seal lower left. Oban-yoko-e. [42501c] \$1,200.

\$5.00