



DAVIDSON GALLERIES

2018 SPRING CATALOG

Original Antique, Modern & Contemporary
Works on Paper



1. Tetsuo AOKI (Japanese, b. 1940) 四人そろえば (With the Four of Us). Woodblock. Signed. 2017. Edition 5/15. 20 7/8 x 14 7/8 inches. [335955] \$425.



2. Tetsuo AOKI (Japanese, b. 1940) タツテイルヒトビト (People Standing). Woodblock. Signed. 2007. Edition 26/30. 21 6/8 x 15 2/8 inches. [336345] \$425.



3. Mio ASAHI (Japanese, b. 1957) *Music Festival at the Monster Forest*. Etching and aquatint. Signed. 2005. Edition 5/35. 19 1/2 x 23 1/2 inches. [333151] \$450.



4. Mio ASAHI (Japanese, b. 1957) *Even if You Do Not Know Where You're Going, Rowing the Boat is Fun II*. Etching and aquatint. Signed. Edition 10/35. 13 3/4 x 11 1/2 inches. [337379] \$250



5. Leonard BASKIN (American, 1922–2000) *Mabuse*. Woodcut. Signed. c. 1963. Edition 37/50. 14 x 13-1/2 inches. Toned. [48091] \$385.



6. Leonard BASKIN (American, 1922–2000) *The Sheriff*. Etching. Signed. 1967. Edition 11/60. Reference: Fern 504.17-1/2 x 17 1/2 inches. [49102c] \$575.



8. Wesley W. BATES. *The Seer* (Look and See). Wood engraving. Signed. Edition 37/50. 10 3/4 x 5 7/8 inches. [338253] \$300.



7. Stefano DELLA BELLA (Italian, 1610–1664) *Title page for Diverse figure and paesi* (Various figures and lands). Etching. Published by Chez Israel, Paris. Trimmed to or just within the platemark. 3 3/4 x 6 5/8 inches. [48925c] \$375.



9. George W. BELLOWS (American, 1882–1925) *Crucifixion*. Lithograph. Signed in pencil. 1923. Edition 65. Printed by Bolton Brown. Reference: Mason 146. Thinly backed for protection. Chicago Art Trust stamp still visible on verso. 18 3/4 x 20 3/8 inches. [48837c] \$1,800.

10. Albert DE BELLEROCHE (Welsh / English, 1864–1944) *Petite Conil* (Julie de Belleroche?). Lithograph. Signed. Cat. 62. 23 x 18 inches [48621c] \$750.



11. Albert DE BELLEROCHE (Welsh / English, 1864–1944) *Danseuse*. (Sahri-Djellie) Dancer at the Folies Bergere and the Casino de Paris. Lithograph. Signed. Cat. 286. 23 x 14 inches. [48624c] \$850.



Albert de Belleroche, although born a British subject due to the Huguenot sympathies of his French forebears with blood ties to the Royal Family in France, never lost his French underpinnings. Much of his image making was devoted to the women in his life. The artist shared studios with John Singer Sargent in Paris and London, but while Sargent drew with charcoal Belleroche chose lithographic crayon on stone as his favored means of expression. His friendships with Paul Helleu and Frank Brangwyn were also important.



12. Albert DE BELLEROCHE (Welsh / English, 1864–1944) *Madame Rosenthal*. Lithograph. Signed. 1908. 19 3/4 x 17 3/4 inches. Cat. 262. In the collection of the British Museum. [48706c] \$950.



13. Albert DE BELLEROCHE (Welsh / English, 1864–1944) *Foret de Villers Cotterets*. Lithograph. Signed. 1907. Cat. 240/241. [48660c] \$725.



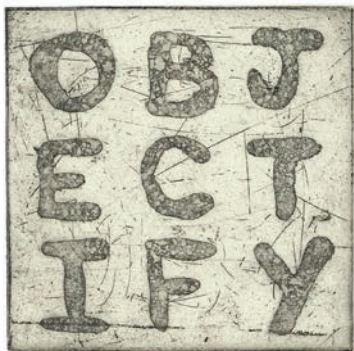
Frank WESTON BENSON (American, 1862–1951) *Redheads Coming*. Etching. Signed. Date of Impression 1930. Reference: Ordeman 302. 8 x 15 inches. [25820c] \$1,000.



15. Ben BERES (American, b. 1976) *Always You*. Drypoint. Signed. 2017. Edition 3/5. 3 x 15 inches. [338371] \$215.

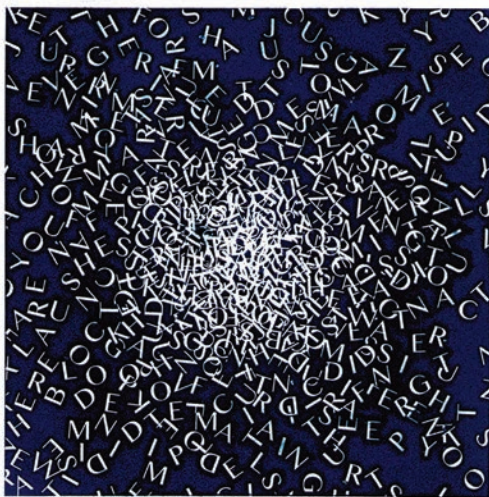


17. Ben BERES (American, b. 1976) *Unrelenting*. Drypoint. Signed. 2017. Edition 1/5. 9 x 8 inches. [338134] \$215.



18. Ben BERES (American, b. 1976) *Objectify*. Etching with aquatint and chine colle. Signed. 2017. Edition 1/10. 4 x 4 inches. [338180] \$165.

16. Ben BERES (American, b. 1976) *Land*. Vitreograph. Signed. 2017. Edition 1/5. 10 x 10 inches. [338144] \$365.





19. Marc CHAGALL (Russian/French, 1887–1985) *L'Accordéoniste*. From Chagall by Jacques Lassaigue. Color lithograph. 1957. Edition 6000. Reference: M. 204. 9 x 15 1/4 inches. [49223c] \$600.



20. Hans BURGMÄIR (German, 1473–1531) *The Duke of Clèves defeated the rebel Flemish in two consecutive battles*. Block 170 from *Der Weisskunig* (The White King). Woodcut. Date of impression 1775. Date of block 1514–1516. Published by Hoffstätter, Vienna. 8-1/2 x 7-1/2 inches. [48409c] \$275.



21. Marc CHAGALL (Russian/French, 1887–1985) *Couple au lit - Paar im Bett From Maternité Suite*. Etching. Signed in the plate. 1926. Edition 960. Printed by Louis Fort, Paris. Published by Édition "Au sans Pareil", Paris. Reference: Kornfeld 68. 6 x 4 inches. [49129] \$375.



22. Mildred BRYANT BROOKS (American, 1901–1995) *Morning Pattern*. Etching. Signed. 1938. 8 7/8 x 11 7/8 inches. [49063] \$575.



23. Edward JOHN BOREIN (American, 1873–1945) *The Wooden Bridge of Taos* (Taos, New Mexico). Etching and drypoint. Signed. c. 1915. Reference: Galvin 233. 5 7/8 x 8 7/8 inches [49651] \$1,800.



24. Andre DERAÏN (French, 1880–1954)
Nude with Bird.
 From LES CENT BIBLIOPHILES: DÎNER DU 27 FEVRIER 1934 au CERCLE DE L'UNION ARTISTIQUE....
 Menu Cover.
 Engraving printed on special Bibliophiles watermarked paper.
 Signed. Image -10 3/4 x 7 inches. Sheet - 14 1/4 x 10 3/4 inches. [49638] \$425.



25. Marc CHAGALL (Russian/French, 1887–1985) *Job at Prayer.* Published in Verve #37-38. From For Dessins Pour La Bible. Lithograph. 1958/1959. Edition Published in Verve #37-38. Printed by Draeger. Reference: M. 253. 14 x 10 1/2 inches. Toned and tape residue at edges, verso. [49222c] \$600.



26. John S. DE MARTELLY (American, 1903–1979) *Old Moon.* Lithograph. Signed. 1941. Edition 202. Published by Associated American Artists. Reference: Zink 46. Illustrated in Great American Prints 1900-1950, by June and Norman Kraeft. 10-1/8 x 13-3/4 inches. [48891] \$995.



27. Maurice DE VLAMINCK (French, 1876–1958) *Village Sous Le Neige.* Signed in pencil. Gravure after the painting. 1951. Edition 12/100. Published by E.C.G., Paris. 15-7/8 x 19-1/4 inches. [48512c] \$800.



28. Erik DESMAZIERES (French, b. 1948) *La Tentation de Saint Antoine*. Etching, Aquatint and roulette printed in two tones. Signed. 1993/1994. Edition 62/75. 23 3/8 x 36 inches. [338993] \$8,500



29. Erik DESMAZIERES (French, b. 1948) *Terres Inconnues*. Etching and Aquatint printed chine collé on BFK Rives. Signed. 1981. Edition 85/90. Reference: FF 61.16 1/4 x 23 1/2 inches. [338994] \$4,800.



30. Erik DESMAZIERES (French, b. 1948) *La Tour de Babel*. Etching on arches. Signed. 1976. Edition 13/90. Reference: FF 21. 19 x 25 1/8 inches. [338995] \$3,800.



31. Albrecht DURER (German, 1471–1528)
The Circumcision. From the 1511 Latin edition of *Life of the Virgin*. Woodcut. Block 1505, Latin text verso. Reference: B. 86. Some restoration including a thin backing. 11 3/4 x 8 3/16 inches. [49202c] \$1,600.



32. Albrecht DURER (German, 1471–1528)
Marriage of the Virgin. From the 1511 Latin edition of *Life of the Virgin*. Woodcut. Date of the block 1505. Reference: B. 82. Restoration of small losses at top and left side of image. 11 3/4 x 8 1/16 inches. [49203c] \$1,800.



33. Albrecht DURER (German, 1471–1528)
Death of The Virgin. From the 1511 Latin edition of *Life of the Virgin*. Woodcut. Date of the block 1510. Reference: B. 93. High Tower watermark, stains verso, small repairs at top and right edge of image. Latin text on verso. 11 3/4 x 8 1/16 inches. [49206c] \$1,800.



34. Max ERNST (German, 1891–1976)
for: Dent Prompt. From the portfolio of 10 color lithographs. Text by Rene Char. 1969. Published by Au Pont des Arts, Galerie Lucie Weill, Paris. 18 1/4 x 15 1/4 inches. [49211c] \$275.



36. Cornelis DUSART (Dutch, 1660–1704) *The Large Village Fair*. Etching. Date of Plate 1685. Reference: Bartsch and Hollstein 16. Probably third state of three. Unidentified watermark. Good, clear impression. Thread margins. 10 x 13-1/8 inches. [48840c] \$3,200.



35. Warren DYKEMAN (b. 1967) *Urban Rural*. Mixed media on Okawara paper. 2010. 10 x 10 inches. [032662] \$360.



37. Andreas FEININGER (French / American, 1960–1999) *Leaf*. From Selected Nature Studies. Gelatin silver print. Signed. 13-1/2 x 10-1/2 inches. [48841c] \$600.



38. Kirsten FLAHERTY (American, b. 1988) *Pit Bull II*. Mezzotint. Signed. 2017. Edition 2/15. 5 1/4 x 3 3/4 inches. [338121] \$275



39. Trevor FOSTER (American, b. 1990) *Enervate*. Mezzotint. Signed. 2017. Edition 13/30. 9 1/2 x 9 1/2 inches. [338292] \$300.



40. Marc FRISING (Luxembourger, b. 1960) *The eternity of a child's dream is a fleeting moment IV*. Mezzotint, aquatint. Signed. Edition 12/40. 25 7/8 x 33 1/2 inches. [337918] \$1,310.



43. Sam FRANCIS (American, 1923–1994)
 Untitled. Four color aquatint on Somerset. Signed.
 Edition 17/100. Printed by Jacob Samuel. Published
 by The Litho Shop, Inc. Santa Monica, CA.
 Lembarc #1-33. 23-1/4 x 17-3/4 inches. [49631c]
 \$2,400.



45. Johnny FRIEDLAENDER (German,
 1912–1992) *Les Grands Oiseaux II*. Color
 etching. Signed in pencil. 1972. Edition
 5/80. Published by Editeur Horn, New York.
 Reference: Schmücking 456. 40-1/2 x 29
 inches. [46699c] \$800.

**41. Margaret
 ANN GAUG**
 (American,
 1909–1994)
 St. George and
 The Dragon.
 Etching. Signed.
 9 x 7 3/8 inches
 [48917] \$475.



42. Margaret ANN GAUG (American,
 1909–1994) *Sea Maiden*. Etching. Signed.
 2 x 3 15/16 inches. [48921] \$225.

**44. Margaret
 ANN GAUG**
 (American,
 1909–1994)
Swallows.
 Etching.
 Signed. 3 7/8
 x 2 inches.
 [48920] \$225.



46. Marc FRISING (Luxembourger,
 b. 1960) *Divertimento I*. Mezzotint,
 aquatint. Signed. 2016. Edition 29/50.
 11 5/8 x 11 5/8 inches. [337917] \$325.



47. Sergio GONZALEZ-TORNERO (Chilean / American, b. 1927) *An Independent Spirit*. Color intaglio. Signed. 1974. Edition 13/150. 17 3/4 x 23 3/4 inches. [48845c] \$485.



49. Francisco GOYA (Spanish, 1746–1828) *Hizonos Dios Y Maravillamos Nos* (It is amazing - and we were made by God) / *Disparate Furioso* (Furious Folly). Plate 6 for *Los Proverbios*. Etching and burnished aquatint. Date of Plate c. 1815-1823. Fifth edition. 1904. Printed by Calcografía. Published by Real Academia. Reference: Harris 253. 9-5/8 x 13-3/4 inches. [48120] \$1,800.



50. Francisco GOYA (Spanish, 1746–1828) *La Mujer Y El Potro. Que Los Dome Otro* (A woman and a horse, let someone else master them) / *El Caballo Raptor* (The horse-abductor). Plate 10 for *Los Proverbios*. Etching, burnished aquatint and drypoint. Plate c. 1815-1823. Fifth edition, 1904. Printed by Calcografía. Published by Real Academia. Harris 257. 9-5/8 x 13-3/4 inches. [48124] \$1,800.



48. Francisco GOYA (Spanish, 1746–1828) *Ni Asi La Distingue* (Even Thus He Cannot Make Her Out). Plate 7 from *Los Caprichos*. Plate 1799. Fifth edition (210 impressions) 1881-1886. Etching, aquatint and drypoint. Printed by Calcografía. Published by Real Academia. Harris 42. 7-3/4 x 5-7/8 inches. [47869c] \$785.



51. Francisco GOYA (Spanish, 1746–1828) *Tal Para Qual* (Two of a Kind). Plate 5 for *Los Caprichos*. Etching, drypoint, and etching. Plate, 1799. This impression after the fourth edition. Harris 40. Strong impression. 7 5/8 x 5 7/8 inches. [49181] \$850.



52. Francisco GOYA (Spanish, 1746–1828) *Alegrias Antruejo, Que Manana Seras Ceniza* (Rejoice, carnival, for tomorrow thou will be ashes) / Disparate De Carnabal (Carnival folly). Plate 14 for *Los Proverbios*. Etching and aquatint. Plate 1815–1823. Fifth edition 1904. Printed by Calcografía. Published by Real Academia. Harris 261. 9-5/8 x 13-3/4 inches. [48128] \$1,800.



53. Francisco GOYA (Spanish, 1746–1828) *Bien Tirada Está* (It is nicely stretched). Plate 17 for *Los Caprichos*. Etching and aquatint. Laid paper with Guarro watermark. Harris 52. Good impression with aquatint holding. 8 1/4 x 6 inches. [49182] \$950.



54. Hiroshige I (Japanese, 1797–1858) *Fujikawa*. From *Famous Places of the Fifty-Three Stations*. Color woodblock. 1855. Published by Tsutaya Kichizo. Colors slightly faded. 13-1/2 x 8-3/4 inches (Oban). [48070c] \$850.



55. Kawase HASUI (Japanese, 1883–1957). *Spring rain at the Gokoku temple* (Harusame Gokokuji). Color woodblock. 1932. Reference: *Hotai cat.* #277. Oban 14 1/4 x 9 5/8 inches. [49218c] \$500.



58. Morris HENRY HOBBS (American, 1892–1967) *Atchafalaya Swamp, Louisiana*. Etching. Signed. 1943/44. Edition 110. Reference: Isbell p. 148. 11 7/8 x 8 7/8 inches [49691c] \$1,000.



56. Bob GUY (born UK) *Apple Pressing*. Wood engraving. Signed. Edition 11/30. 8 x 6 inches [337673] \$205.



60. Morris HENRY HOBBS (American, 1892–1967) *The Dragonfly*. Drypoint and etching. Signed. 1934. Edition 50. Reference: Isbell p. 73. Stretching tape at margin edge. 7 x 5 inches [49682c] \$500.

57. Morris HENRY HOBBS (American, 1892–1967) *Ebb Tide*. Drypoint and etching. Signed. Edition 2/25. Reference: Isbell p. 48. Stretching tape residue at margin edges. Faint foxing. 10 x 8 1/2 inches. [49678c] \$400.

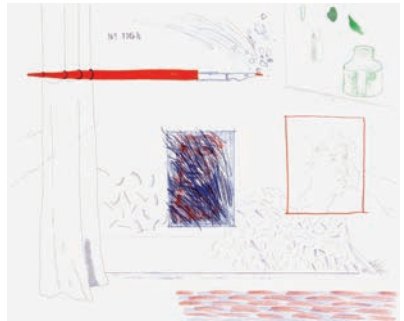


59. Morris HENRY HOBBS (American, 1892–1967) *Dockey Boy*. Drypoint. Signed. 1945. Reference: Isbell p. 178. 6 7/8 x 6 7/8 inches. [49693c] \$400.



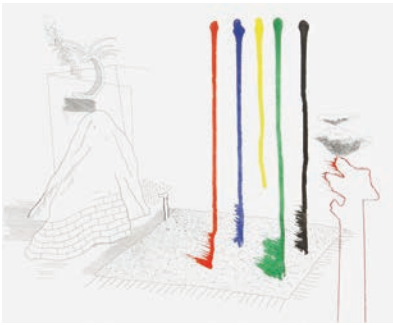


61. *The Poet*. Signed. [48500c] \$1,500.

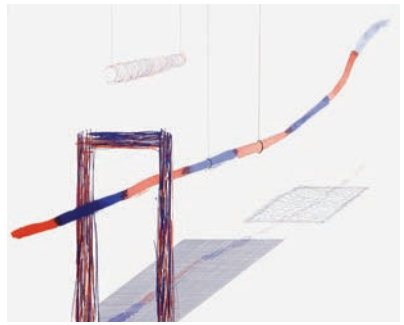


62. *Etching is the Subject*. Signed. [48502c] \$1,800.

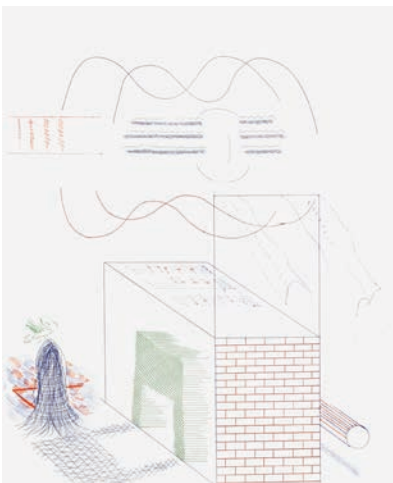
David HOCKNEY (English, b. 1937) From *Blue Guitar Series*. Mixed color intaglios. 1977. Edition 149/200. Signed. Published by Petersburg Press, London and New York. 13-1/2 x 16-3/4 inches.



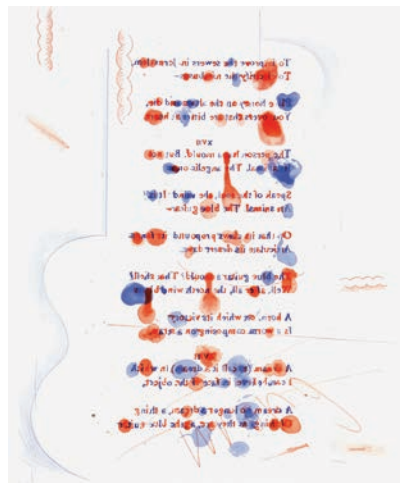
63. *I Say They Are*. Signed. [48506c] \$2,400.



64. *It Picks Its Way*. Signed. [48507c] \$1,500.



65. *Buzzing Of The Blue Guitar*. Signed. 16-7/8 x 15-5/8 inches [48504c] \$1,500.



66. *Made In April*. Signed. 16-7/8 x 15-5/8 inches. [48503c] \$1,800.



67. Eric HOFFMAN (American, b. 1979) *Miles Davis*.
Wood engraving. Signed. Edition 31/50. 5 x 6 inches.
[337622] \$100.



68. John F. HOLMER (American, 1894–
1962) *Ten Blow - Court and Broadway*.
Lithograph. Signed. 12 1/2 x 9 inches.
[48846c] \$385.



**69. Karl ALBERT
KASTEN** (American,
1916–2010) *The Model*.
Color etching and aquatint.
Signed. 1957. Proof. 14-3/4
x 18-3/4 inches. [43789c]
\$750.

**70. Friedensreich
HUNDERTWASSER**
(Austrian, 1928–2000)
*It hurts to wait with love
if love is somewhere
else*. Sheet No. 3
from REGENTAG
PORTFOLIO. Serigraph
in 29 colors, including
2 phosphorescent with
metal imprints in 6
colors. 1971-1972.
Edition 01958/3000.
Printed by Dietz Offizin,
Lengmoos, Bavaria.
Published by Ars Viva,
Zurich. Reference: HWG
46, Works catalog 630A.
14-3/8 x 23-3/4 inches.
[49107] \$3,000.





71. Paul JACOULET (French, 1902–1960)
Dans La Loge Officielle (In the Official Box).
Color woodblock. Signed. Carver: Maeda.
Edition 133/150. Bat seal. Printed by Fujii.
Reference: Miles 85. 15 1/2 x 11 3/4 inches.
[49091c] \$2,200



72. Paul JACOULET (French, 1902–1960) *La Confidente (The Confidante)*. Color woodblock. Signed. 1942. Bat seal. Reference: Miles 84. Mild staining in bottom right margin. 15 1/2 x 11 3/4 inches. [49092c] \$2,500.



73. Paul JACOULET (French, 1902–1960)
La Favorite (The Favorite). Color woodblock.
Signed. Carver: Maeda. 1942. Edition 133/150.
Bat seal. Printed by Fujii. Reference: Miles 83.
15 1/2 x 11 3/4 inches. [49085c] \$2,200.



74. Paul JACOULET (French, 1902–1960)
Avant l'Audience (Before the Audience). Color woodblock. Signed. 1942. Edition 133/150. Bat seal. Reference: Miles 82. Faint fading evident along left edge of image. 15 3/8 x 11 5/8 inches. [49086c] \$2,000.

75. Max KLINGER (German, 1857–1920) *By The Sea*. From *Intermezzi Suite*, Opus IV, Print 2. Etching and aquatint. Singer 53. 7-1/2 x 14-3/4 inches. [48848c] \$300.



76. Max KLINGER (German, 1857–1920) *Bear and Elf*. From *Intermezzi Suite*, Opus IV, Print 1. Etching and aquatint. Singer 52. 15-1/2 x 9 inches. [48847c] \$300.

77. Max KLINGER (German, 1857–1920) *Fallen Rider*. From *Intermezzi Suite*, Opus IV, Print 11. Etching and aquatint. Singer 62. 12-1/4 x 7-3/4 inches. [48849c] \$350.



78. Michael KEMPSON (Australian, b. 1961) *IND (India)*. From *Child's Play*. Etching and aquatint. Signed. 2016. Edition 4/20. 15 1/2 x 12 1/2 inches. [338049] \$350.



79. Michael KEMPSON (Australian, b. 1961) *IRL (Ireland)*. From *Child's Play*. Etching and aquatint. Signed. 2016. Edition 4/20. 15 1/2 x 12 1/2 inches. [338080] \$350.



81. Max KLINGER (German, 1857–1920)
Simplicius Writing Lesson. From *Intermezzi Suite*,
Opus IV, Print 7. Etching and aquatint. Singer 58.
[48851c] \$375.



83. Gene KLOSS (American, 1903–1996)
Apaches A-Visiting. Mixed etching. Signed.
Edition 62/75. 14 x 11 inches. [48492c] \$900.

84. Gene KLOSS (American,
1903–1996) *In The War Dance*.
Mixed etching. Signed. 14 x 11 inches.
[48491c] \$900.

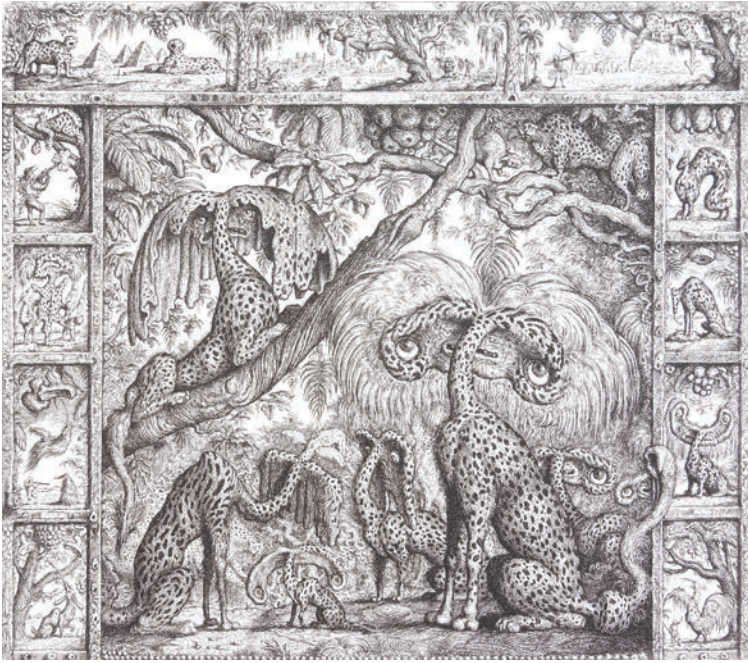


80. Gene KLOSS (American, 1903–
1996) *Ceremonial Basket*. Mixed etching.
Signed. Edition 57/75. 10-3/8 x 8-1/8
inches. [48486c] \$700.



82. Gene KLOSS (American, 1903–1996)
San Francisco Waterfront. After the sketch
from 1928. Etching and drypoint. Signed.
11 x 14 inches. [48487c] \$800.





85. Peter KLUCIK (Slovakian, b. 1953) *Greetings from the Jungle*. Etching. Signed. 1993. EA edition. 11 x 12 1/2 inches. [338523] \$385.



86. Peter KLUCIK (Slovakian, b. 1953) *Little Red Riding Hood*. Etching. Signed. 1985. EA edition. 8-1/2 x 5-3/4 inches. [338563] \$160.



87. Alois KOLB (Austrian, 1875–1942) *Three Nudes Around a Fountain*. From Ex Libris for Dr. Ernst Schwarz. Etching. Signed in pencil. 7-3/4 x 3-1/2 inches. [12586] \$125



88. Käthe KOLLWITZ (German, 1867–1945) *Die Gefangenen* (The Prisoners). Plate 7 from *Bauernkrieg*. Etching and softground. Signed. Date of Plate 1908. Klipstein 98 VII/VIII. Knesebeck 102. Verlag Emil Richter Dresden Original-radierung von Kathe Kollwitz 1921 imp. at bottom of plate. 12 7/8 x 16 5/8 inches. [49633] \$2,800.



90. Toyohara KUNICHIKA (Japanese, 1835–1900) *Samurai Costume and Umbrella*. From *Harboring Waves of Women's Love* Color woodblock. 1875. With Toshidama Seal. Published by Gusokuya Kahei. Carver's Seal: Watanabe Hori (Watanabe Eizo). Oban. [49215] \$495



89. Deborah MARIS LADER (American, b. 1961) *Wings and a Prayer*. Etching, chine colle. Signed. 2014. Edition 2/10. 14 x 9 inches. [337388] \$650.



91. Deborah MARIS LADER (American, b. 1961) *Coat of Arms*. Lithograph. Signed. 2012. Edition 13/25. 8 x 10 inches. [337387] \$250.



92. Jacob LAWRENCE (American, 1917–2000) *Workshop (The Workshop) (Builders #1)*. Color lithograph. Signed. 1972. Edition 6/100. Printed by George C. Miller & Son, N.Y. Published by Abrams Original Editions (of Harry N. Abrams, N.Y.). 22 1/2 x 17 1/2 inches. [49189] \$5,500.



93. Jacob LAWRENCE (American, 1917–2000) *Jacob Lawrence Exhibition Poster*. For the St. Louis Art Museum exhibition, August 1 - September 1, 1974. Offset lithograph. Signed and dated by the artist 8/2/74. 37 x 24 sheet. [49632c] \$950.



94. Jacob LAWRENCE (American, 1917–2000) *Toussaint at Ennery*. From *Toussaint L'Ouverture*. Silkscreen on Bainbridge two ply rag paper. Signed. 1989. Edition 16/25 AP (regular edition 99). Printed by Lou Stovall, master printer at Workshop Inc., Washington D.C. Published by Amistad Research Center, New Orleans and Spradling Ames, Key West. Reference: Nesbett L89-3. 18 5/8 x 29 inches. [49115c] \$7,000.



95. Abraham ORTELIUS (Flemish, 1527–1598) *Islandia* (Iceland) c.1585/1603. Usual centerfold. Engraving with early color. Latin text on verso. 13 1/4 x 19 1/4 inches (image) 16 1/2 x 22 inches (sheet). [49235c] \$9,000.

96. Janssonius VAN WAESBERGHE (Netherlands) *Novissima Islandiae Tabula*. Engraving with handcolor. c.1680/1690. Published by Pitt, M./Swart, S./Janssonius Van Waesberghe. 15 x 19 3/8 inches (Plate) 20 1/4 x 23 1/2 inches (Sheet). Usual centerfold. [49237c] \$850



97. Georgio CAROLO FLANDRO (1588-1664) *Map of Iceland --- Tabula Islandiae*. Hand-colored engraving by Willem Janszoon Blaeu (1571-1638). Published Amsterdam 1634. 15 x 19 3/4 inches. [49236c] \$950



98. Sebastian MUNSTER (1488–1552)
Sweden, Gothen, Norway, Denmark (Gemeine Beschreibung Aller Mitnachtigen Lander/ alsz Schweden/Goten/ Norwegen/Denmark). Handcolored woodcut.. Basle, 1588. Usual centerfold. 12 1/4 x 14 1/4 inches (borders). [49238c] \$1,200.

99. Chul SOO LEE (Korean, b. 1954) *Be living 산다는건*. Woodcut. Signed. 2013. Edition 9/27. 16-1/2 x 19 inches. [336283] \$665.



100. Aoife LAYTON (Irish) *Fugitive*. Mezzotint. Signed. Edition 2/10. 11 5/8 x 9 3/4 inches. [337979] \$375.

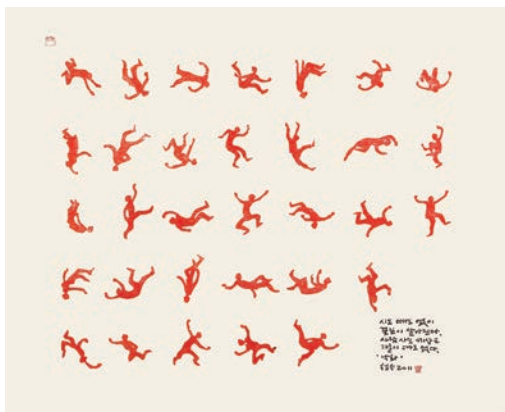


101. Aoife LAYTON (Irish) *Safari*. Mezzotint. Signed. Edition 4/10. 11 3/4 x 9 5/8 inches. [337980] \$375.



이제 달아놓은 길을
 도를 달립니다.

'산다는건.....'
 2013년 9월



102. Chul SOO LEE (Korean, b. 1954) *Falling Petals 낙화*. Woodcut. Signed. 2011. Edition 11/30. 22-1/2 x 48 inches. [336267] \$1,100.

Clare V. H. LEIGHTON (English American, 1898–1989) From
Wedgewood Plate Designs 1949–50 “New England Industries”
Wood Engravings. 1949–1950. Signed. 9 1/2 x 9 1/2 inches



103. Lobstering. Edition 20/50. BPL 605.
[49058C] \$1,500.



104. Ice Cutting. Edition 20/50. BPL 607.
[49056C] \$1,500



105. Tobacco (Growing). Edition 21/50.
BPL 614. [49051C] \$1,200.



106. Logging. Edition 9/50. BPL 608.
[49061C] \$1,800.



107. Cod Fishing, Chatham. Edition 21/50.
BPL 613. [49057C] \$1,500.



108. Maple Sugar (Sugaring). Edition
19/50. BPL 612. [49052C] \$1,500.



109. Mark ALAN LEITHAUSER (American, b. 1950) *Birches*.
Etching. Signed. 1980. Edition
39/125. 11 3/4 x 15 3/4 inches.
[338984] \$385.



111. Haku MAKI (Japanese, 1924–2000)
Poem 72 -105 (Stone - L). Woodblock and
concrete relief print. Signed. Edition 24/108.
22 x 22 inches. [49098c] \$1,200.



112. Xiang LI (Chinese, b. 1974) *Hidden
Weapons II*. Mezzotint. Signed. 2017. Edition
6/12. 10 x 10 inches. [338174] \$500.



110. Haku MAKI (Japanese,
1924–2000) *Collection - 4*. Color
mixed relief print. Signed. Edition
9/203. 5 x 5 inches. [49652c] \$650.



113. Haku MAKI (Japanese, 1924–
2000) *Poem 70-36*. Woodblock and
concrete relief print. Signed. Edition
29/155. 22 3/8 x 15 3/4 inches. [48887c]
\$950.



114. Haku MAKI
(Japanese, 1924–2000) Collection - 6. Color mixed relief print. Edition 3/203. Signed. Faint mat burn. 5 x 5 inches. [49654c] \$625.



115. Haku MAKI
(Japanese, 1924–2000) Gui - 8. Relief print. Edition 23/300. Signed. 4 x 3 7/8 inches. [49653c] \$650.



116. Robert MARX
(American, b. 1925) *Bishop in a Tree*. Etching and aquatint. Signed. 1973. Edition: F/J. 23 x 16 inches. [338376] \$1,200.



117. John MARIN (American, 1872–1953) *Meaux Cathedral*. Etching on old Japan paper. Signed & signed in the plate, Marin 07. Zigrosser 75, i/ii, first state, rare. Benson 68. 9 x 6-5/8 inches. [49073] \$2,500.



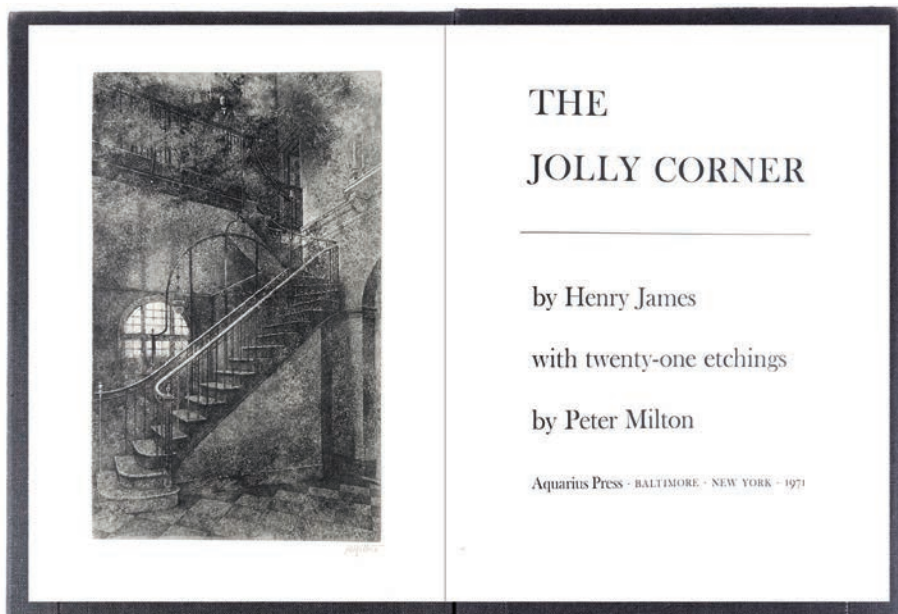
118. Franz ANTON MAULBERTSCH (German, 1724–1796) *Der Guckkastenmann* (The Peep Show). Alt. Title: Peep Show. Etching. Signed in the plate. Date of Plate 1785. 12-3/4 x 15-3/4 inches. [28633c] \$850.



119. Roberto MATTA (Chilean, 1912–2002) *Feu, Feu Sur Moi* (Plate 9). From *Seasons In Hell Suite*. Color etching and aquatint on Japan. Signed. Edition 19/100. 18 7/8 x 14 inches. [48546c] \$1,500.



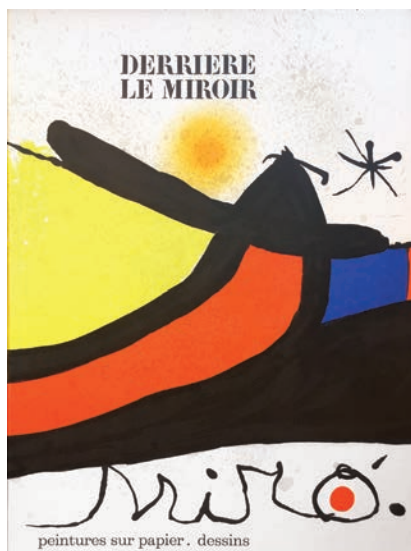
120. Roberto MATTA (Chilean, 1912–2002) From *Centre Noeuds*, Plate 9. Mixed color etching. Signed. Edition 117/125. Published by Alexander Kahan and George Visat. Reference: Visat 401. 14 x 10 1/2 inches. [48871c] \$900.



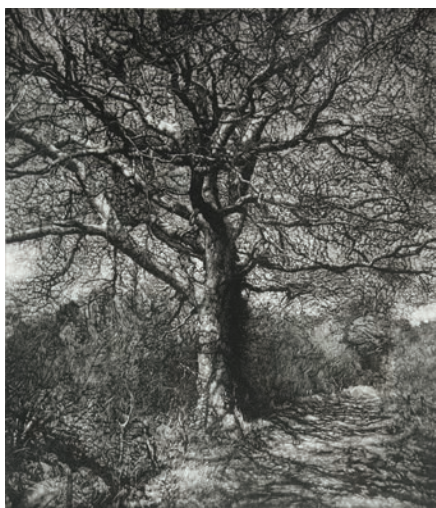
121. Peter MILTON (American, b. 1930) *The Jolly Corner*, A complete boxed portfolio containing the text to the Henry James short story illustrated with 21 etchings. 1971. Signed on the colophon page. Edition 103/150. One of the 21 prints, 'Staircase, II:2' is also signed in pencil. Contents pristine, with original interleaving. Outside of portfolio shows a few scuff marks. Final etching is slightly light struck. Box c.20 x 16 inches. [337190] \$4,200.



122. Joan MIRÓ (Spanish / Catalan, 1893–1983) *Derriere Le Miroir* #203, April 1973, complete as issued. Contains 3 original lithographs p. 4-5, 12-13, and the cover. Printed by Les ateliers de l'imprimerie Arte, Adrien Maeght. Published by Maeght Éditeur. 15 x 11 inches. [49661c] \$500.



123. Joan MIRÓ (Spanish / Catalan, 1893–1983) *Derriere Le Miroir* #193/194, Oct/Nov 1971, complete as issued. Contains 3 original color lithographs p. 2-3, 30, and the cover. Printed by Les ateliers de l'imprimerie Arte, Adrien Maeght. Published by Maeght Éditeur. 15 x 11 inches. [49662c] \$500.



124. Martin MITCHELL (British) *Hearts of Oak*. Mezzotint. Signed. Edition 10/50. 13 3/4 x 12 inches. [338405] \$560.



125. Martin MITCHELL (British) *Winter Oak*. Mezzotint. Signed. Edition 30/40. 8 x 5 7/8 inches. [338400] \$205.



127. Henry MOORE (English, 1898–1986) *Ideas for Sculpture in a Landscape III*. Etching on Arches. Signed. Edition 48/100. 12.5 x 9 3/4 inches. [48670c] \$1,500.



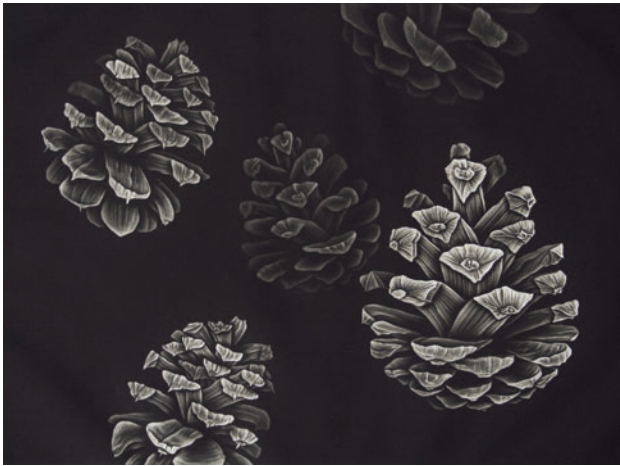
129. Hajime NAMIKI (Japanese, b. 1947) *Tree Scene 56*. Color Woodblock. Signed. 1996. Edition 127/200. 10 1/2 x 15 inches. [334505] \$415.

128. Thomas NASON (American, 1889–1971) *District Schoolhouse*. Wood engraving. Signed. 1942. Edition 250. 6 3/4 x 10 inches. [49072c] \$225.



126. Isamu NOGUCHI (Japanese, 1904–1988) *Black Sun*. Iron hollow-cast made from the modello (hand molded study). 1969/1970. Edition 50 (not numbered) Total edition 57 including proofs. Commissioned by The Seattle Art Museum. 1 3/4" thick, 5" diameter. [49650j] \$1,500

Isamu Noguchi was one of the twentieth century's most important sculptors. Although born in Los Angeles, Noguchi lived in Japan until the age of thirteen when he returned to the U.S. He abandoned pre-med studies at Columbia to work with the sculptor Onorio Ruotolo and later Constantin Brancusi in Paris. His work was eclectic in inspiration and he came to employ a wide range of materials, including stainless steel, marble, cast iron, balsa wood, bronze, sheet aluminum, basalt, granite, clay, and water. The "Black Sun" in Volunteer Park exemplifies his elegant simplicity of form, rendered in Brazilian granite.



130. Julie NISKANEN
(American, b. 1983) *Pinecones II*. Mezzotint. Signed. 2008.
Edition 8/15. 17 1/2 x 23 1/2
[42116] \$925.

131. Julie NISKANEN
(American, b. 1983) *Be Still*. Mezzotint. Signed.
2015. Edition AP. 10 7/8 x
16 inches. [337938] \$575.

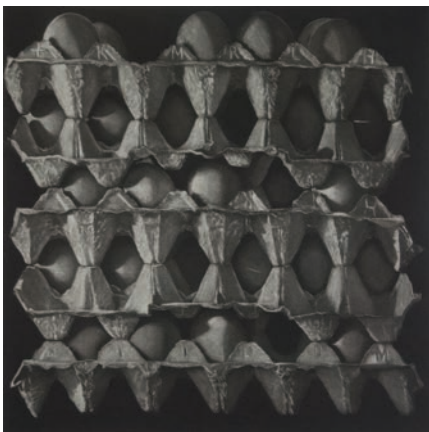


132. Barbara NOAH
(American) *Starry Night 2*. Archival Pigment Print.
Signed. 2013. Edition AP.
1. 10.375 x 14.5 inches.
[329384] \$500.



133. Claes OLDENBURG
(Swedish/American, b. 1929) *Proposed Colossal Monument for Battersea Park*. Color offset lithograph. Signed. 1969. Edition 131/300. Printed by Colorcraft (N.Y., N.Y.). Published by Multiples, Inc. 24 x 35 1/2 inches. [49216c] \$1,250.

134. Artemio RODRIGUEZ
(Mexican, b. 1972) *Uncle Sam is having a bad day*. Linocut. Signed. 2016. Edition 37/50. 10 7/8 x 11 5/8 inches. [339019] \$475.



135. Judith ROTHCHILD
(American / French, b. 1950) *Quelques Douzaines*. Mezzotint. Signed. Edition 32/60. 11 3/4 x 11 3/4 inches. [335112] \$650.

138. Giovanni BATTISTA PIRANESI (Italian, 1720–1778) ►
The Arch of Titus, with the Casino Farnese on the left. Views of Rome series. Etching. 1771. Hind 98, first state (before numbers), F.755. Good impression. Minor losses and soiling in margins. 18 3/8 x 27 7/8 inches. [49234c] \$2,500.



136. Pablo PICASSO (Spanish, 1881–1973) *Portrait de Famille I*. Lithograph. Signed in red pencil. Edition 23/50. Bloch 1029. 20-1/4 x 26 inches. [49224c] \$4200.



137. Eva PIETZCKER (German, b. 1966) *6 a.m. (Orcas Island)*. Moku Hanga Woodcut. Signed. 2010. Edition 2/30. 9 3/4 x 26 1/2 inches. [333334] \$500.





139. Henri RIVIERE (French, 1864–1951) *La Tempete*. Color Lithograph in 12 colors on wove paper as published in “La Feerie des Heures”. 1902. Printed stamp & signature in image, bottom left. Printed by Eugene Verneau. Reference: Fields p. 77. 9 1/2 x 23 1/2 inches. [49643c] \$800.



140. Bill H. RITCHIE (American, b. 1941) *School of Wave Squares*. Intaglio. Signed. 1979. Edition 40. 12 x 9 inches. [45060c] \$225.



141. Jenny ROBINSON (British/American, b. 1957) *Relics*. Drypoint with Monotype. Signed. 35 x 53 inches. [334842] \$3,000.



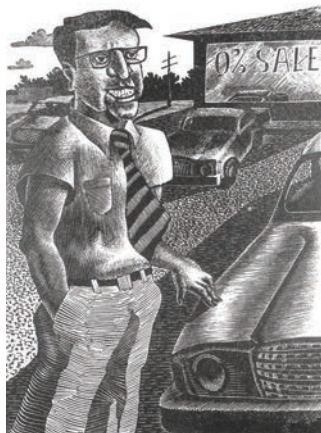
142. Georges ROUAULT (French, 1871–1958) *Plus Le Coeur Est Noble*. Plate 49 from *The Miserere*. Mixed etching technique. Plate made 1926. This impression is from the only edition (450), published by Volland & Etoile Filante, Paris. 1948 on paper with Ambrose Volland watermark. Wofsey 156. 23 x 16 1/2 inches. [49103c] \$1,250.

143. Mable A. ROYDS (Scottish, 1874–1941) *Christ In The Carpenter's Shop*. Color woodcut. Signed. Edition 60. 8-7/8 x 7-7/8 inches. [48781c] \$450.

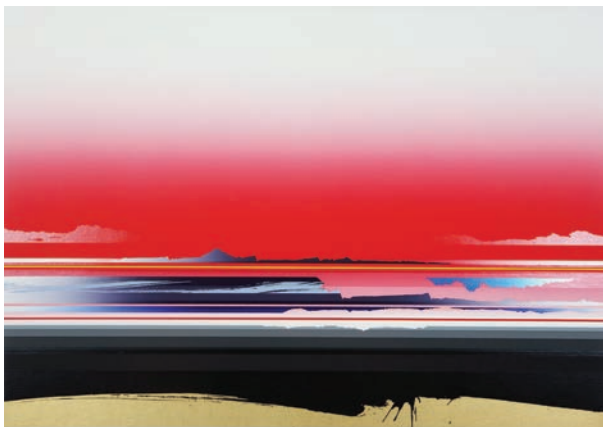




144. Tomiyuki SAKUTA
(Japanese, b. 1960)
A Lonely Tree
- Night. Mixed intaglio. Signed.
2010. Edition 4/30.
16 x 11.25 inches.
[43565] \$525.



145. Anders SANDSTROM
(American, b. 1961) *Lucky Day*
Auto. Wood engraving. Signed.
Edition 7/20. 7 x 5 inches. [337709]
\$135.



146. Tetsuro SAWADA
(Japanese, 1935–1999)
Mirror I. Silkscreen.
Signed. 1989. Edition
11/150. 17 x 23 3/4 inches.
[49659c] \$1,650.

147. Jenny SCHMID (American b.
1969) *Chernobyl Chimera*. Etching.
Signed. 2017. Edition 8/15. 7 3/4 x 11
3/4 inches. [338320] \$375.





148. Kiyoshi SAITO (Japanese, 1907–1997)
Haniwa (2) Clay Image. Color woodblock. Signed. 1952. Cat. #239. Some fading. 5 7/8 x 11 1/8 inches. [49187c] \$350.



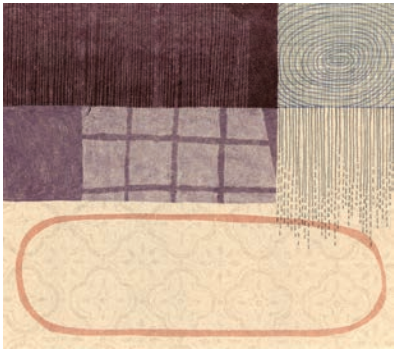
149. Kiyoshi SAITO (Japanese, 1907–1997)
Haniwa (1) Clay Image. Color woodblock. Signed. 1952. Cat. #238. 5 7/8 x 11 1/8 inches. [49188c] \$ 325.



150. Colin SEE-PAYNTON (British, b. 1946)
Round of Wren. Wood engraving. Signed. Edition 50/150. 8 x 6 inches. [46235] \$635.



151. Colin SEE-PAYNTON (British, b. 1946)
Peregrine Mantle. Wood engraving. Signed. Edition 57/100. 12 x 10 inches. [337809] \$680.



152. Sarah SMELSER (American b. 1971)
House of Dreams. Monotype. Signed. 2017. 7
x 8 inches. [337223] \$535.



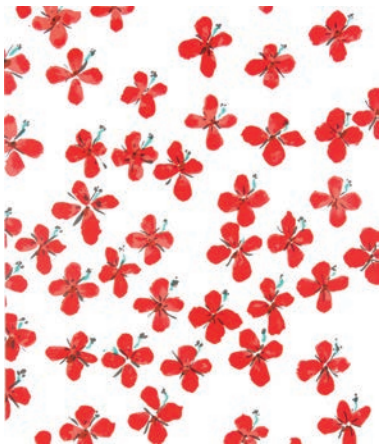
153. Michael SPAFFORD (American, b. 1935)
Europa and the Bull #2. Woodblock. Signed. 2018.
Edition AP. 30-1/4 x 24-1/4 inches. [339012] \$950.



154. Rosalyn STERN (American
Contemporary) *Sphere of Light*.
Color etching and aquatint.
Signed. Edition 40/75. 18 x 11 3/4
inches. [338479] \$485.

155. Charles SPITZACK (American, b.
1987) *At Work*. Color woodcut. Signed.
2010. Edition AP. 9 x 12 inches. [336146]
\$175.





157. Donald SULTAN (American, b. 1951) *From Wall Flowers Portfolio*. Color silkscreen. Signed. 2008. Edition 33/190. Published by Jaffa Workshop of Har-El Printers & Publishers. Sheet 24 x 22 1/2 inches. Image c. 15 1/2 x 13 1/2 inches. [338539] \$1,100.



156. Donald SULTAN (American, b. 1951) *From Wall Flowers Portfolio*. Color silkscreen. Signed. 2008. Edition 33/190. Published by Jaffa Workshop of Har-El Printers & Publishers. Sheet 24 x 22 1/2 inches. Image c. 15 1/2 x 13 1/2 inches. [338538] \$1,100.



158. Carol SUMMERS (American, 1925–2016) *Cove*. Woodcut. Signed. 1977. Edition 48/250. Summers cat.#153. 10 x 10 inches. Faded. [338455] \$300.



159. Carol SUMMERS (American, 1925–2016) *Hilo Bay*. Woodcut. Signed. 1974. Edition 22/75. Summers cat.#114. Slightly faded. 37 x 24-1/2 inches. [338460] \$2,000.



160. Carol SUMMERS (American, 1925–2016) *Cairo's Flag*. Woodcut. Signed. 1979. Edition 21/100. Summers cat.#157. Slightly faded. 36 x 36 inches [338458] \$3,000



161. Azumi TAKEDA (Japanese, b. 1986) *Waiting* *Persons*. Etching and Aquatint. Signed. 2014. Edition 8/15. 10 1/2 x 15 1/2 inches. [330932] \$300.



162. Rodney THOMSON (American, 1878–1941) *Little Doe*. Drypoint. Signed. 6 3/4 x 10 inches. [48951c] \$325.



163. Seiko TACHIBANA (Japanese American, b. 1964) *Fern-butterfly effect e-1*. Intaglio. Signed. 2015. Edition 2/25. 7 1/2 x 6 inches. [331404] \$365.



164. Rodney THOMSON (American, 1878–1941) *Deer Family*. Drypoint. Signed. c. 1935. 12 x 9 inches. [48951c] \$400.



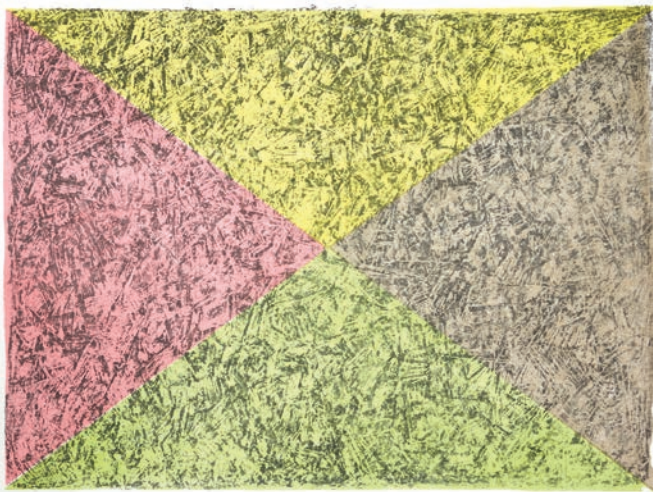
165. Rodney THOMSON (American, 1878–1941) *Mountain Lion and Doe*. Drypoint. Signed. 8 x 12 inches. [48951c] \$375.



167. Amorn THONGPAYONG (Thai, b. 1988) *Fade Away 3*. Mezzotint. Signed. 2017. Edition 5/17. 35 1/4 x 23 1/2 inches. [337967] \$650.



166. Shigeki TOMURA (Japanese, b. 1951) *Nature Summer 13*. Drypoint with chine colle. Signed. 2013. Edition 5/24. 5-3/4 x 3-3/4 inches. [334677] \$315.



168. Mark TOBEY (American, 1890–1976) *Season's Encounter*. Color lithograph. Signed. 1970. Edition 6/20. 13 1/4 x 17 3/4 inches. [49649c] \$1,800.



169. Théodore TOBIASSE (French, 1927–2012) *Dancing*. Color lithograph on Japan. Signed. Edition XXXVII/LXXXV. 25-3/4 x 19-1/2 inches. [48571c] \$475.



170. Théodore TOBIASSE (French, 1927–2012) *Carrying The Queen*. Color lithograph on Japan. Signed. Edition XXXVIII/LXXXV. 26 x 19-1/2 inches. [48581c] \$475.



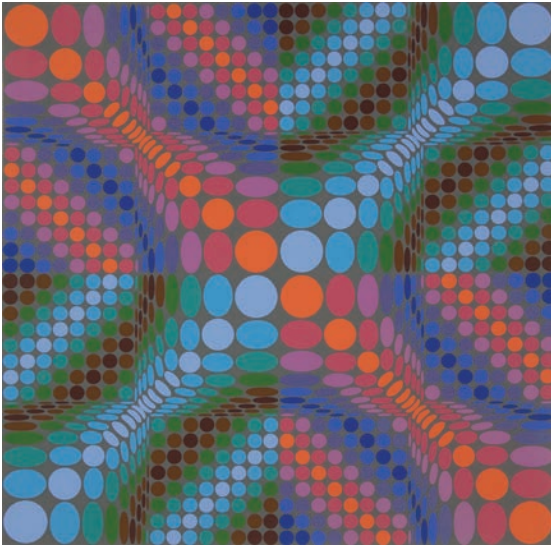
171. Rufino TAMAYO (Mexican, 1899–1991) *Perro (Dog)*. Color etching on Guarro paper. Signed. 1979. Edition 27/99. Printed by Ediciones Poligrafa Barcelona. Pereda 261. 21-3/4 x 29-3/4 inches. [48464c] \$4,200.



173. Jim WESTERGARD (American, b. 1939) *Fly Fishing*. Wood engraving. Signed. Edition 11/40. 4 x 4 7/8 inches. [337498] \$100.

172. Jim WESTERGARD (American, b. 1939) *Statue of Limitations*. Wood engraving. Signed. Edition 10/46. 6 7/8 x 4 5/8 inches. [337506] \$200.





174. Victor VASARELY
(Hungarian / French, 1908–1997)
Delocta. Color serigraph. Signed.
1979. Edition 19/275. 24 x 24
inches. [49214c] \$450.

**175. Robert VON
NEUMANN** (German,
1888–1976) *Beaching The
Dory*. Lithograph. Signed.
Edition 1/250. Pub. by AAA.
9-1/8 x 13-3/4 inches. A few
small skinned areas verso.
[47826] \$485.

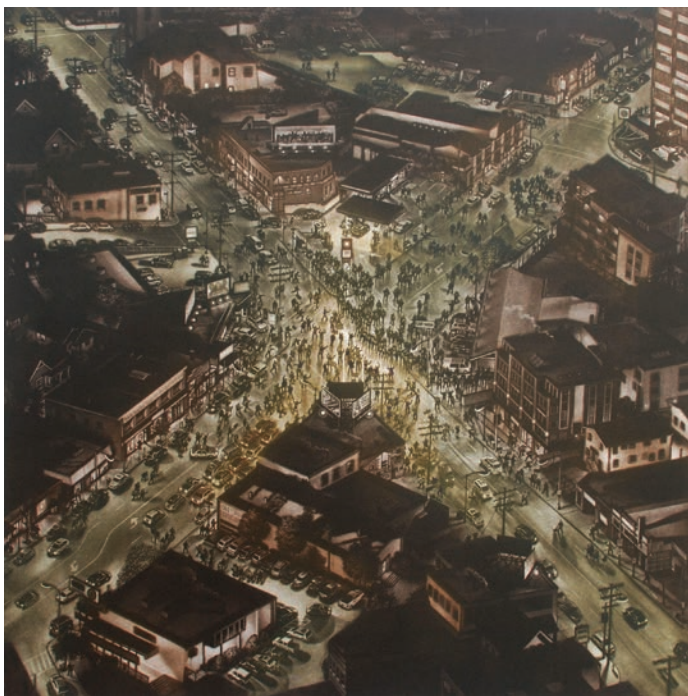


176. Reginald WILMER VAUGHAN
(American, 1869–1958) *Oak, Hemp and
Canvas*. Drypoint. Signed. 6-7/8 x 8-7/8
inches. [47392] \$375.



177. Carol WAX (American, b. 1953) *Bunny Chops*.
Mezzotint. Signed. 2016. Edition 12/50. 3-3/4 x 5-3/4
inches. [338391] \$210.

178. George C. WALES (1868–
1940) *The Landbreeze*. Drypoint.
Signed. 1921. Edition 57. Cat.#48.
9-7/8 x 7 inches. [48978c] \$450.



179. Art WERGER
(American, b. 1955)
At the Crossroads.
Mezzotint. Signed.
Edition 7/25. 23
5/8 x 23 5/8 inches.
[338109] \$1,500.



180. George C. WALES
(1868–1940) *Coming Out of
Marblehead.* Drypoint. Signed.
1929. 6 3/4 x 9 3/4 inches.
[48993c] \$450.



181. George C. WALES (1868–1940) *New
England.* Etching. Signed. 1928. 6 7/8 x 9 7/8
inches. [49020c] \$450.



182. George C. WALES (1868–1940) *American
Ships XIII* (U.S. Brig Niagara, Lake Erie, 1813). 2
color lithograph with handcolor. Signed. 1928. No.
69. 12 x 16 3/4 inches. [49044c] \$500.

188. Keisuke YAMAMOTO (Japanese, b. 1961) *Light Time Silence* #29. Lithograph. Signed. 2017. Edition 10/28. 23 1/2 x 33 1/2 inches. [338561] \$650.



189. Keisuke YAMAMOTO (Japanese, b. 1961) *Light Time Silence* #28. Lithograph. Signed. 2017. Edition 8/28. 17 3/4 x 33 1/2 inches. [338556] \$650.

190. Keisuke YAMAMOTO (Japanese, b. 1961) *Light Time Silence* #30. Lithograph. Signed. 2017. Edition 5/20. 23 1/2 x 33 1/2 inches. [338339] \$650.





191. Hiroshi YOSHIDA (Japanese, 1876–1950) *Azalea Garden Tea House*. Color woodblock. Signed in pencil. Date of blocks, 1938. Jizuri seal. Abe 226. Faint staining verso and front. 9-3/4 x 14-7/8 (Oban). [48778c] \$2,500.



193. Alfredo ZALCE (Mexican, 1908–2003) *La Hamaca*. Engraving. Signed. 1947. Edition 200. 8 x 12 1/2 inches. [49457c] \$475.



195. José VELA ZANETTI (Spanish, 1913–1998) *Two Women*. Ink drawing. Signed. 1956. Toned. Some soft creasing and folds. 22-1/2 x 28-1/2 inches. [48797c] \$1,800.



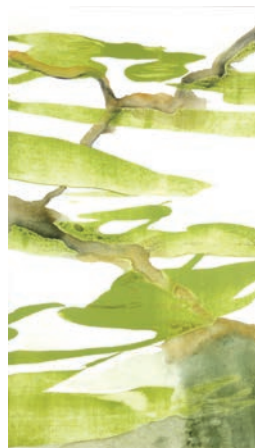
192. Hiroshi YOSHIDA (Japanese, 1876–1950) *Moraine Lake*. Color woodblock. Signed. 1925. Abe #14. "Made in Japan" stamp on verso. Very lightly toned. Very edge of sheet discolored from prior framing. 14 5/8 x 9 3/4 inches. Oban.[49099c] \$4,500.



194. Tsukioka YOSHITOSHI (Japanese, 1839–1892) *Lunacy--unrolling letters* (tsuki no monogurui-fumihiroe). From 100 Aspects of the Moon #77. Color woodblock. 1889. Engraved by Yamamoto. Seal Taiso. Oban 13 x 8 7/8 inches. [49090c] \$950.



196. Dion PICKERING ZWIRNER (American, b. 1941) *Landscape with a Vermillion Hill*. Mixed media on paper. Signed. 2015. 8 x 20 inches. [335120] \$950.



197. Dion PICKERING ZWIRNER (American, b. 1947) *Branches with Moss*. Mixed media on paper. Signed. 2016. 13 x 6 inches. [337076] \$975.

CATALOG LIST NO. 98 - SPRING 2018

CONTACT: Sam Davidson (206) 624-7684 or sam@davidson galleries.com

All works are subject to prior sale. All items are guaranteed as described. A certificate of authenticity is available upon request. Please contact the gallery with questions or to discuss a work in detail. Dimensions are given as inches, height precedes width. Orders are shipped promptly upon receipt of full payment. Works are normally shipped insured via United Parcel Service unless other arrangements are specified. Shipping charges vary and are dependent on size and value of items ordered. Washington State residents must add appropriate sales tax. Items may be sent "on approval" beginning two weeks after initial catalog release. Works may be returned to the gallery for any reason within two weeks of purchase for a full refund less shipping. Returned works should be securely packed and fully insured.

Please inform the gallery of any special collecting interests. Davidson Galleries is always willing to consider purchasing or consigning fine original prints either individually or as entire collections.

Davidson Galleries is a charter member of the INTERNATIONAL FINE PRINT DEALERS ASSOCIATION and is committed to its strict ethical standards.



International
Fine Print Dealers
Association

DAVIDSON GALLERIES • www.davidson galleries.com

313 Occidental Avenue South, Seattle, WA 98104

Hours: Tuesday-Saturday 10am-5:30pm



DOWNLOADABLE CATALOGS AVAILABLE

As part of our commitment to produce less waste, Davidson Galleries is proud to offer our catalogs as **free downloadable PDFs** through **DAVIDSONGALLERIES.COM**. Simply visit the Publications page on the website to download.

If you would prefer to continue receiving our semi-annual **printed catalogs by mail**, annual subscriptions are available for **\$12**, deductible from your first catalog purchase. Please contact the gallery for details.



Get our monthly
email newsletter!

[FRONT COVER] Tony FITZPATRICK (American, b. 1958) *Al Green's Bird*. Etching. 2014. Edition 30/45. Signed. 5 x 7 inches. [338617] \$1,500.

DAVIDSON GALLERIES

313 OCCIDENTAL AVE S • SEATTLE, WASHINGTON 98104
WWW.DAVIDSONGALLERIES.COM

CHANGE SERVICE REQUESTED

CATALOG LIST NO. 98 - SPRING 2018 \$6.00



Thomas HART BENTON (American, 1889–1975) *Go in'
Home*. Lithograph. 1937. Edition 250. Signed. Fath 14. Published
by Associated American Artists, N.Y. 9 3/8 x 12 inches.
[49699c] \$3,800.