

FRANCISCO TOLEDO



DAVIDSON GALLERIES

COVER IMAGE: *El jockey (The Jockey)*. Color lithograph. Signed. 1975. Edition 6/50. 24³/₈ x 16¹/₂ (image), 25³/₄ x 17³/₄ (sheet). [54014] \$2,400.



1. *Animales en fila (Animals in Line)*.
Color lithograph on Arches. Signed.
EA. Regular edition of 100. 23 x 17
(image), 25³/₄ x 19³/₈ (sheet). [54019]
\$1,500.



2. *Ballena / Animal blanco (Whale / White Animal)*.
Lithograph on Arches.
Signed. 1969. Edition
100/100. Published by Atelier
Clot, Bramsen et Georges,
Paris. 15¹/₂ x 20³/₄ (image),
17³/₄ x 23¹/₄ (sheet). [54010]
\$1,100.

Francisco Toledo (Mexican, 1940–2019)

Francisco Toledo was born in 1940 in Juchitán, Mexico. He studied at the Benito Juárez Autonomous University in Oaxaca and the Taller Libre de Grabado in Mexico City before moving to Paris at age 17 and learning from writer Octavio Paz, painter Rufino Tamayo, and many others. Toledo also honed his printmaking skills in the studio of Stanley William Hayter. Toledo returned to Mexico in 1965 and became a part of “la Ruptura” (or the Breakaway Generation), a group of Mexican artists working against established nationalistic styles. Toledo settled in Oaxaca and became a key figure of Mexican art and cultural preservation in Oaxaca. He was regarded by many as Mexico’s greatest living artist until his passing in 2019.

Toledo is known for his works on paper, especially intaglio prints and paintings, but he created thousands of artworks including collages, tapestries, and ceramics. His work often features Zapotec imagery from his indigenous pre-Columbian heritage. His style is described as using folklore, Shamanism, and mysticism to blend animals and humans; Expressionistic; and environmental. Toledo was known as El Maestro, the master or teacher, who was devoted to bringing art to the masses. He was deeply invested in his community in Oaxaca and thus created the Oaxaca Museum of Contemporary Arts, the Graphic Arts Institute of Oaxaca, a library for the blind, a photographic arts center, a botanical garden, and more. He described these projects as his inspiration to continue producing and selling art. Toledo’s work is now included in the collections of major institutions in the United States, Mexico, and internationally.

On his inspiration:

“What I do is a mixture of things, but the pre-Hispanic world has been a source of inspiration; there are certain solutions that are decorative that come from pre-Hispanic art and at the same time there is much primitive art that is refined or simple but also very modern. It also comes from what I read—many fables from the Americas and other parts of the world.”

—Francisco Toledo for BOMB Magazine, 2000



3. *Caballos (Horses)*. Color lithograph on Arches. Signed. EA. 20¼ x 16½ (image), 25¾ x 19½ (sheet). [54041] \$1,800.



4. *Caballo y carruaje (Horse and Carriage)*. Etching. Signed. 1985. AP. Tear (½ inch) and soft creases at upper right and left margin corners. Light struck. 7¾ x 9¾ (plate), 17¾ x 22 (sheet). [54169c] \$1,200.



5. *Caballos con gallo (Horses with Chicken)*. Etching. Signed. c. 1980. Edition 17/25. Sticker label verso. 12 x 9⅞ (plate), 15½ x 12¾ (sheet). [54163c] \$950.



6. *Casas y bicicletas (Houses and Bicycles)*. Color etching. Signed. 1982. PA. Regular edition of 25. 8 x 7¾ (plate), 14¾ x 11 (sheet). [54149c] \$2,800.



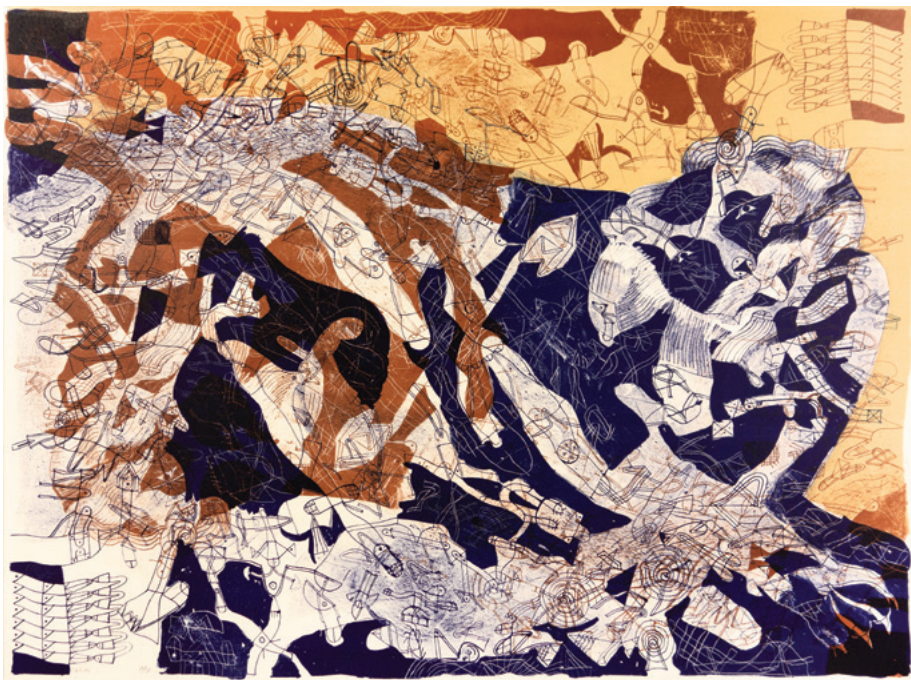
7. *Changos bailando en círculo (Monkeys Dancing in a Circle)*. Etching and aquatint. Signed. 2016. Edition 3/15. Blindstamp lower right corner. 14½ x 14½ (plate), 21⅞ x 20½ (sheet). [54125c] \$2,000.



8. *Cocodrilos y jabalí (Crocodiles and Boar)*. Lithograph on BFK Rives. Signed. Edition 30/50. 20¼ x 17¾ (image), 25⅝ x 19¾ (sheet). [54020] \$1,250.



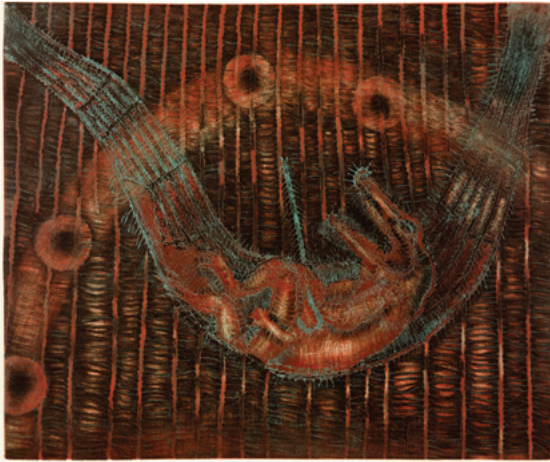
9. *Conejos y agua (Rabbits and Water)*. Lithograph on Arches. Signed. EA. 22 x 16⅜ (image), 26 x 19¾ (sheet). [54016] \$1,800.



10. *Composición abstracta (Abstract Composition)*. Color lithograph. Signed. Edition 21/35. Narrow margins. 19¼ x 25¾ (image), 19½ x 26 (sheet). [54017] \$1,600.



11. *Dos cocodrilos y hamaca verde* (Two Crocodiles and Green Hammock). Color aquatint, drypoint, and sugar-lift. Signed. 2018. Edition 9/30. Blindstamp lower right corner. 14³/₈ x 17¹/₂ (plates), 21 x 23¹/₂ (sheet). [54122c] \$2,200.



12. *El cocodrilo descansando con bastón* (Crocodile Resting with Cane). Color aquatint. Signed. 2018. Edition 7/15. Blindstamp and watermark lower right corner. 14³/₄ x 17¹/₂ (plates), 21 x 23¹/₂ (sheet). [54116c] \$2,200.



13. *El corral* (The Corral). Color lithograph on Arches. Signed. 1969. Edition 99/100. 18³/₈ x 21⁵/₈ (image), 19⁵/₈ x 25³/₄ (sheet). [54029] \$2,000.



14. *El gallo / Le coq (The Rooster)*. Lithograph on Arches. Signed. EA. Published by Atelier Clot, Bramsen et Georges, Paris. 11 $\frac{1}{8}$ x 14 $\frac{3}{4}$ (image), 17 $\frac{3}{4}$ x 22 (sheet). [54009] \$850.



15. *El maestro de caligrafía (The Master of Calligraphy)*. Etching. Signed. PA. 7 $\frac{1}{2}$ x 5 (plate), 15 x 11 (sheet). [54151c] \$2,000.



17. *El viejito (The Little Old Man)*. Aquatint and drypoint on Hahnemühle paper. Signed. 2018. Edition 5/10. Blindstamp lower right margin corner. 14 $\frac{1}{2}$ x 5 $\frac{3}{4}$ (plate), 19 $\frac{1}{4}$ x 10 (sheet). [54118c] \$1,200.



16. *Hombre y gatos (Man and Cats)*. Color lithograph on Arches. Signed. Edition 43/100. 19 $\frac{3}{4}$ x 14 $\frac{1}{2}$ (image), 22 $\frac{1}{4}$ x 17 $\frac{1}{4}$ (sheet). [54015] \$1,800.



18. *Iguanas*. Color etching. Signed. 1985. Edition VIII/L. Small linen hinges verso on all four margins. Soft crease along left margin edge. 15 $\frac{1}{2}$ x 15 $\frac{1}{4}$ (plate), 30 x 22 (sheet). [54165c] \$2,800.



19. *La cocina / El pollo* (The Kitchen / The Chicken). Lithograph. Signed. 1969. Edition 31/75. Cockling, soft creases and some soiling in margins. Repaired tear ½ inch into image at upper left margin, tear in lower margin away from image. 25 x 38 (image), 26⅞ x 41⅜ (sheet). [54039] \$1,750.



20. *La ducha* (The Shower). Color lithograph on Arches. Signed. Edition 61/100. 18 x 10¾ (image), 22 x 14¾ (sheet). [54004] \$1,200.



21. *La cabra* (The Goat). Lithograph on Arches. Signed. 1969. EA. Published by Atelier Clot, Bramsen et Georges, Paris. 15 x 11⅞ (image), 22⅞ x 17¾ (sheet). [54006] \$900.



22. *La gallina* (The Hen). Color lithograph. Signed. EA. 10½ x 10½ (image), 13¼ x 14¼ (sheet). [54042] \$900.



23. *La jaiba* (The Crab). Color lithograph on Arches. Signed. 1969. Edition 52/100. Published by Atelier Clot, Bramsen et Georges, Paris. Two small tears at right edge of sheet barely into image. Light soiling in margins. Crease in lower right margin corner. 36 x 24¾ (image), 39⅜ x 24¼ (sheet). [54038] \$2,800.



24. *La muerte colgada* (Hanging Death). Drypoint and sugar-lift. Signed. 2017. Edition 8/15. Blindstamp and watermark lower right margin corner. 18¼ x 9 (plate), 23¾ x 14⅞ (sheet). [54121c] \$1,400.



25. *La liebre* (The Hare). Color lithograph on Arches. Signed. 1969. Edition 21/100. Published by Atelier Clot, Bramsen et Georges, Paris. Shallow dents from hanging clips at edge of upper margin. 17 x 22¼ (image), 19¾ x 25¾ (sheet). [54032] \$1,700.



26. *Les oiseaux / Los pájaros* (The Birds). Lithograph on BFK Rives. Signed. Edition 26/45. 16 x 22 (image), 19¾ x 25½ (sheet). [54024] \$1,750.



27. *Les oiseaux / Los pájaros* (The Birds, Yellow Variation). Color lithograph on Arches. Signed. Edition 26/100. 16 x 22 (image), 19¾ x 25¾ (sheet). [54026] \$1,800.



28. *Los animales salvajes* (The Wild Animals). Lithograph on Arches. Signed. 1969. Edition 28/40. Soft crease at lower left margin. 29¾ x 21¼ (image), 35½ x 25 (sheet). [54037] \$1,500.



30. *Los cerdos y los pies* (Pigs and Feet). Etching on BFK Rives. Signed. 1985. Edition 28/30. Sticker label verso. 3¼ x 5¾ (plate), 11 x 14¾ (sheet). [54168c] \$1,200.



31. *Los cocodrilos y las vacas* (Crocodiles and Cows). Etching. Signed. c. 1980. Edition 23/25. Sticker label verso. 6 x 7 (plate), 9⅞ x 10¾ (sheet). [54161c] \$1,600.



29. *Los caballos de guerra* (War Horses). Etching on BFK Rives. Signed. 1985. Edition 2/30. Cockling overall and minor soiling. Tear (½ inch) at upper left margin well away from image. Red ink smudge and slight soiling from handling at sheet edge, verso. 17 x 12¼ (plate), 30 x 22 (sheet). [54170c] \$2,800.



32. *Movimiento* (Movement). Color lithograph on BFK Rives. Signed. 1969. EA. 22¼ x 16¼ (image), 25⅝ x 19¾ (sheet). [54043] \$1,800.



33. Mucha lluvia (A Lot of Rain). Etching and aquatint on Hahnemühle paper. Signed. 2016. Edition 19/25. Blindstamp lower right margin corner. $15\frac{3}{4} \times 7\frac{7}{8}$ (plates), $20\frac{1}{2} \times 12$ (sheet). [54126c] \$1,300.



34. Muchacha con perro (Girl with Dog). Etching. Signed. 1981. PA. Slight bend in upper right margin corner. $10\frac{1}{4} \times 11\frac{1}{2}$ (plate), $15 \times 22\frac{1}{4}$ (sheet). [54150c] \$2,500.



35. Mujer con pájaro y pez (Woman with Bird and Fish). Etching. Signed. c. 1980. Edition 7/25. Sticker label and faint soiling verso. $6 \times 6\frac{7}{8}$ (plate), $9\frac{7}{8} \times 10\frac{5}{8}$ (sheet). [54162c] \$1,200.



36. Mujer con toro (Woman with Bull). Lithograph on BFK Rives. Signed. 1969. EA. Published by Atelier Clot, Bramsen et Georges, Paris. $22\frac{1}{2} \times 16\frac{1}{4}$ (image), $25\frac{1}{2} \times 19\frac{5}{8}$ (sheet). [54023] \$1,600.



37. Mujer con paraguas (Woman with Umbrella). Color lithograph on Arches. Signed. Edition 2/50. 28×21 (image), $31\frac{1}{2} \times 23\frac{3}{4}$ (sheet). [54035] \$1,900.



38. *Mujer de iguana con pájaros (Iguana Woman with Birds)*. Color etching on BFK Rives. Signed. c. 1980. AP. Slight crease at lower right margin well away from the image. $7\frac{7}{8} \times 11\frac{1}{2}$ (plate), 22×30 (sheet). [54166c] \$1,600.



40. *Mujer y gato en la cocina (Woman and Cat in Kitchen)*. Etching. Signed. 1985. Edition 13/35. Sticker label verso. $7\frac{3}{4} \times 9\frac{5}{8}$ (plate), $9\frac{7}{8} \times 12\frac{3}{4}$ (sheet). [54167c] \$1,600.



39. *Mujer y cerdo (Woman and Pig)*. Color lithograph on Arches. Signed. EA. Registration pin holes at center of upper and lower margins. $15\frac{3}{4} \times 12\frac{1}{2}$ (image), $22\frac{1}{8} \times 17\frac{3}{4}$ (sheet). [54005] \$1,000.



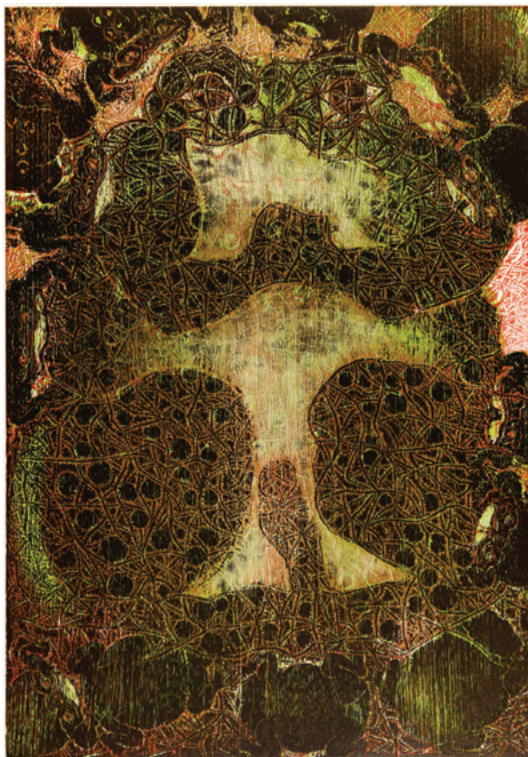
41. *Mujer, hombre, y sombrero (Woman, Man and Hat)*. Lithograph on Arches. Signed. $16\frac{1}{2} \times 21$ (image), $19\frac{3}{4} \times 25\frac{7}{8}$ (sheet). [54034] \$1,600.



42. *Pulpo en acuario (Octopus in Aquarium)*. Aquatint and drypoint. Signed. 2016. Edition 26/30. Watermark and blindstamp lower right margin corner. 12 x 11¼ (plate), 17 x 16 (sheet). [54119c] \$1,300.



43. *Quili Quili Quili*. Etching. Signed. 2016. Edition 1/10. Blindstamp lower right margin corner. 11⅝ x 11½ (plate), 19 x 18 (sheet). [54124c] \$1,300.



44. *Sapo (Toad)*. Color woodcut. Signed. Edition 41/60. Blindstamp at lower right margin corner. Printing ink stain at upper right, verso. 25 x 17½ (blocks), 31⅝ x 24 (sheet). [54152c] \$3,000.



45. Temblor III / Temblor y sus réplicas (Earthquake III / Earthquake and its Aftershocks). Drypoint. Signed. 2017. Edition 20/20. Watermark lower left margin corner. Blindstamp lower right margin corner. 9 x 18 (plate), 14½ x 23¼ (sheet). [54120c] \$1,200.



46. Vaca con cangrejo (Cow with Crab). Color etching and woodcut on Arches. Signed. c. 1980. Edition 35/50. Soft creases at top and bottom of left margin edge. 12 x 14¾ (image), 17 x 22¼ (sheet). [54164c] \$2,800.



47. Vaca brincando (Jumping Cow). Aquatint and etching. Signed. 2016. Edition 1/25. Blindstamp lower right corner. 13 x 19¼ (plate), 20 x 26 (sheet). [54123c] \$2,100.



48. Venado con mujer (Deer with Woman). Lithograph on BFK Rives. Signed. EA. 24¼ x 18 (image), 29¾ x 22 (sheet). [54040] \$1,500.



49. Vaquero (Cowboy). From the Cowboy Series. Color lithograph. Unsigned, with notations. c. 1970. Bon à tirer définitif (Final proof before the edition as designated by the artist). Commissioned by Ferdinand Roten Galleries, Baltimore. Minor soiling from handling in margins. Two registration pin holes in top and bottom margins. 20½ x 15½ (image), 25¾ x 19¾ (sheet). [27545c] \$850.



50. *Vaca con zapatos (Cow with Shoes)*. Drypoint on Hahnemühle paper. Signed. 2018. Edition 12/15. Blindstamp lower right margin corner. $8\frac{3}{4} \times 15\frac{1}{4}$ (plate), $13\frac{1}{2} \times 19\frac{1}{2}$ (sheet). [54117c] \$1,550.



51. *Venado pariendo (Deer Giving Birth)*. Lithograph on Arches. Signed. 1969. EA. Published by Atelier Clot, Bramsen et Georges, Paris. $13\frac{3}{4} \times 18\frac{1}{4}$ (image), 17×22 (sheet). [54008] \$1,500.

FRANCISCO TOLEDO—SPRING 2022

CONTACT: Rebecca McDonald, (206) 624-7684
or rebecca@davidson galleries.com

An additional impression may be available for certain works. Listed prices apply to the impression shown. Prices may vary for additional impressions. All items are guaranteed as described. Certificate of authenticity is available upon request. Please contact the gallery with questions or to discuss a work in detail. **All dimensions are given in inches, height precedes width.** Orders will ship at the conclusion of the exhibition. Works are normally shipped insured via UPS unless other arrangements are specified. Shipping charges vary and are dependent on size and value of items ordered. Washington State residents must add appropriate sales tax. Works may be returned to the gallery for any reason within two weeks of purchase for a refund less shipping and associated restocking fees. Returned works should be securely packed and fully insured.

Please inform the gallery of any special collecting interests. Davidson Galleries is willing to consider purchasing or consigning fine original prints individually or as collections.

Davidson Galleries is a charter member of the **International Fine Print Dealers Association** and is committed to its strict ethical standards.

DOWNLOADABLE CATALOGS AVAILABLE

As part of our commitment to produce less waste, we are proud to offer our catalogs as downloadable PDFs through **davidson galleries.com**. Visit the publications page on the website to download free of charge.

If you would prefer to continue receiving our semi-annual printed catalogs by mail, **annual subscriptions are available for \$12**, deductible from your first catalog purchase. Please contact the gallery for details.



Join our bi-monthly
email newsletter!

IFPDA MEMBER

DAVIDSON GALLERIES

313 Occidental Avenue South | Seattle, Washington 98104
www.davidsongalleries.com | Open Tuesday-Saturday 11-5:30

CHANGE SERVICE REQUESTED

FRANCISCO TOLEDO –SPRING 2022



52. *Caballo y avispas (Horse Stung by Wasps)*. Color lithograph. Unsigned. c. 1970. Third color proof just prior to the B.A.T. Creasing and two small tears at upper margin edge. Registration pin holes in right and left margins. 15 5/8 x 20 (image), 19 7/8 x 25 7/8 (sheet). [27540c] \$800.

\$6.00