



六十余州名所図会

播磨 舞子の浜

舞子の浜

DAVIDSON GALLERIES

COVER IMAGE: View #45 Harima Province, Maiko Beach. Very good early color. Margins skillfully restored. [52612c] \$1,900.

Utagawa Hiroshige (Japanese, 1797-1858)
Famous Views of the Sixty-odd Provinces.
 Color woodblocks. Oban.

These early impressions from the artist's *Famous Views of the Sixty-odd Provinces* have wonderful rich color and are particularly well printed. As noted, a number of subjects have had the margins trimmed. This is reflected in the prices.



1. View #1 Yamashiro Province, *The Togetsu Bridge in Arashiyama*. Very good early color. Margins trimmed. [52587c] \$750.



2. View #3 Kawachi Province, *Mount Otoko in Hirakata*. Good early color. Margins trimmed. [52588c] \$700.



3. View #10 Mikawa Province, *Horai Temple Mountains*. Very good early color. Margins trimmed. [52589c] \$685.



4. View #11 Totomi Province, *Lake Hamana-Kanzen Temple in Horie and the Inasa-Horie Inlet*. Early color. Slightly faded. Margins trimmed. [52590c] \$625.



5. View #12 Suruga Province, Mibo Pine Grove. Good early color. Margins trimmed. [52591c] \$650.



6. View #14 Izu Province, The Hot Springs of the Shunzen Temple. Good early color. Margins trimmed. [52592c] \$675.



7. View #15 Sagami Province, Enoshima - The Entrance to the Caves. Good early color. Margins trimmed. [52593c] \$700.



8. View #19 Kazusa Province, Yasashi Bay Kujukuri. Good early color. Faint staining at bottom left corner. Margins trimmed. [52594c] \$600.



9. View #23 Mino Province, Yoro Waterfall. Good early color. Margins skillfully restored. Four tiny marks in waterfall. [52597c] \$1,800.



10. View #20 Shimosa Province, Choshi Beach Tour. Good early color. Margins trimmed. Faint spot at top center. [52595c] \$625.



11. View #21 Hitachi Province, Daijingu Shrine in Kashima. Good early color. Margins trimmed. Small spot at lower left. [52596c] \$725.



12. View #24 Hida Province, Basket Ferry. Very good early color. Margins trimmed. Three tiny spots in sky. [52598c] \$575.



13. View #29 Dewa Province, Mogami River—A Perspective View of Mount Gassan. Very good early color. Margins trimmed. [52601c] \$750.



14. View #25 Shinano Province, *The Moon Reflected in the Sarashina Paddy-fields—Mount Kyodai*. Very good early color. Margins skillfully restored. [52599c] \$1,650.



15. View #27 Shimotsuke Province, Mount Nikko Urami Waterfall. Very good early color. Margins skillfully restored. [52600c] \$1,800.



16. View #31 Eichizen Province, Tsuruga–Kehi Pine Grove. Very good early color. Margins trimmed. [52602c] \$700.



17. View #33 Noto Province, Waterfall Bay. Very good early color. Margins trimmed. [52603c] \$800.



18. View #35 Echigo Province, Oyashirazu. Good early color. Margins trimmed. [52604c] \$675.



19. View #36 Sado Province, Gold Mountain. Very good early color. Margins trimmed. [52605c] \$725.



20. View #41 Hoki Province, Ono—Distant View of Mount Daisen. Very good early color. Margins skillfully restored. [52609c] \$2,000.



21. View #42 Izumo Province, *The Hotohoto Festival at the Great Shrine*. Very good early color. Margins skillfully restored. Two tiny spots at upper center. [52610c] \$1,600.



22. View #37 Tamba Province, Kanegasaka. Very good early color. Margins trimmed. [52606c] \$785.



23. View #39 Tajima Province, Iwai Valley-Kannon Cave. Very good early color. Margins trimmed. [52607c] \$750.



24. View #40 Inaba Province, Karo Koyama. Very good early color. Margins trimmed. [52608c] \$950.



25. View #44 Oki Province, Takuhi Shrine. Good early color. Margins trimmed. Very faint soiling at center. [52611c] \$600.



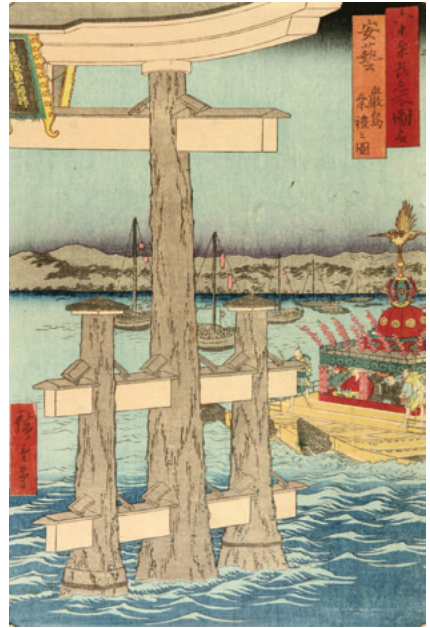
26. View #46 Mimasaka Province, Yamabushi Valley. Very good early color. Margins skillfully restored. [52613c] \$2,100.



27. View #49 Bingo Province, Abuto-Kannon Temple. Very good early color. Margins skillfully restored. Faint spot at top left. [52615c] \$1,650.



28. View #48 Bitchu Province, *The Go Gorge*. Very good early color. Margins trimmed. [52614c] \$825.



29. View #50 Aki Province, *Itsukushima—Depiction of a Festival*. Good early color. Margins trimmed. [52616c] \$625.



30. View #54 Awaji Province, *Goshiki—Five Color Beach*. Very good early color. Margins trimmed. [52617c] \$750.



31. View #56 Sanuki Province, *Distant View of Mount Zozu*. Good early color. Margins trimmed. Blue streaks in sky at upper left. [52618c] \$600.



32. View #59 Chikuzen Province, Hakozaki Umi no Nakamichi. Very good early color. Margins trimmed. Two uninked spots in water, left of center. [52619c] \$625.



33. View #62 Bungo Province, Minosaki. Very good early color. Margins trimmed. [52620c] \$800.



34. View #63 Hizen Province, Mount Nagasaki. Good early color. Margins trimmed. Small uninked spot at upper left. [52621c] \$825.



35. View #64 Higo Province, Gokanosho. Good early color. Margins trimmed. Small uninked spot at upper left. [52622c] \$800.



36. View #68 Iki Province, Shisa. Very good early color. Margins skillfully restored. [52625c] \$2,100.



37. View #65 Hyuga Province, Aburatsu Port—Obi Oshima. Very good early color. Margins trimmed. [52623c] \$875.



38. View #66 Osumi Province, Sakura Shrine Cherry Island. Very good early color. Margins trimmed. [52624c] \$885.



39. Utagawa Hiroshige I (Japanese, 1826-1869) Crowd at the Year-End Market at Kannon Temple in Asakusa. From *Famous Places in the Eastern Capital (Toto Meisho)*. Color woodblock. 1832-1834. Some soiling in margins. Oban. [52515c] \$1,800.

Utagawa Kunisada as Toyokuni III
 (Japanese, 1786–1864) *Tale of Genji*.
 Color woodblock. 1857. Signed
 Baichoro Kunisada. Aratame censor
 seal. Oban.

This selection of six *Tale of Genji* images represents part of a large group of other images from the series. The chapter images: 1, 2, 3, 4, 5, 8, 9, 12, 16, 20, 21, 24, 25, 27, 28, 29, 36, 37, 38, 39, 40, 41, 42, 43, 44, 47, 49 can be viewed on our website under the artist's name.



42. LEFT: Chapter 10—*The Sacred Tree (Sakaki)*. Trimmed. [52629c] \$185.

43. RIGHT: Chapter 51—*The Boat Upon Water (Ukifune)*. Trimmed and faded. [52642c] \$185.



40. LEFT: Chapter 23—*The Warbler's First Song (Hatsune)*. [52446c] \$325.

41. RIGHT: Chapter 35—*New Herbs Part I (Wakana no ge)*. Trimmed and soiled. [52645c] \$200.



44. LEFT: Chapter 46—*Beneath the Oak (Shiigamoto)*. Trimmed, slightly faded, and rubbed. [52638c] \$175.

45. RIGHT: Chapter 18—*The Wind in the Pines (Matzukaze)*. Trimmed and soiled. [52655c] \$200.





46. Paul Jacoulet (French, 1902-1960) *Les Joueurs-Chinois (The Gamblers)*. Color woodblock. June 1941. Edition 167/350. Signed. Sparrow seal. Stamped verso. Carved by Maeda. Reference: Miles 77. Toned, esp. verso. Residual tape stain at margin edge. 12 x 15 $\frac{3}{8}$ (blocks), 14 x 18 $\frac{1}{2}$ (sheet). [51392c] \$870.



47. LEFT: Paul Jacoulet (French, 1902-1960) *Les Jades-Chinoise (The Jade Lady)*. Color woodblock. Feb. 1940. Signed. Boat seal. Watermark. Carved by Maeda. Reference: Miles 63. Faintly toned along left margin edge. 15 $\frac{1}{2}$ x 11 $\frac{7}{8}$ (blocks), 18 $\frac{3}{4}$ x 13 $\frac{7}{8}$ (sheet). [52456c] \$1,800.

48. RIGHT: Paul Jacoulet (French, 1902-1960) *Le Mandarin Aux Lunettes-Mandchoukuo (The Mandarin with Glasses)*. Color woodblock. May 1950. Signed. Ivy seal. Watermark. Carved by Maeda. Faint toning in margins. 15 $\frac{1}{2}$ x 11 $\frac{3}{4}$ (blocks), 18 $\frac{3}{4}$ x 14 (sheet). [52461c] \$1,400.

Many other images by Paul Jacoulet are available for viewing on our website under the artist's name.



49. LEFT: Paul Jacoulet (French, 1902-1960) *Les Perles-Mandchoukuo (The Pearls)*. Color woodblock. Dec. 1950. Signed. Peach seal. Watermark. Stamped verso. Carved by Maeda. Reference: Miles 113. Three spots in top left margin. 15 $\frac{1}{2}$ x 11 $\frac{3}{4}$ (blocks), 18 x 14 $\frac{1}{8}$ (sheet). [52458c] \$1,800.

50. RIGHT: Paul Jacoulet (French, 1902-1960) *L'Etoile de Cobi-Mongole (The Star of the Gobi)*. Color woodblock. Jan. 1951. Signed. Owl seal. Carved by Maeda. Reference: Miles 114. Tape residue verso. 15 $\frac{1}{2}$ x 11 $\frac{7}{8}$ (blocks), 18 $\frac{5}{8}$ x 14 (sheet). [51435c] \$2,025.



51. **Utagawa Kuniyoshi** (Japanese, 1797–1861). *Report of The Battle of Ichinotani in Kumagai's Camp, Ichinotani futaba gunki at the Kawarazaki Theater*. Color woodblock. 1850. Published by Ebi-ya Rinnosuke. Censor seal Murata and Mera. Oban triptych. [50036c] \$425.



52. **Utagawa KUNISADA as TOYOKUNI III** (Japanese, 1786–1864). *Stage 4 of Soga Moyo Kameyama-zome at the Kawarazaki Theater*. Color woodblock. 1855. Carved by Yokokawa Takejiro. Published by Tsutaya Kichizo. Good impression and color. Backed for strength. Oban triptych. [50034c] \$450.



53. **Utagawa Kunisada as Toyokuni III** (Japanese, 1786–1864). *Dance of the Mandarin Ducks (Oshidori no Shosha) in Sanpukutsui Kabuki no Irodori*. Color woodblock. 1855. Carved by Tsuge Shojiro. Published by Tsutaya Kichizo. Censor seal Aratame, Hare 5. Carver seals Hori Shoji. Oban triptych. [50032c] \$425.



54. Kiyoshi Saito (Japanese, 1907-1997)
Bunraku Puppet. Color woodblock. Unnumbered edition. Signed in ink. Red artist's seal. $14\frac{1}{8} \times 8\frac{3}{8}$ (blocks), $17 \times 11\frac{3}{8}$ (sheet). [47860c] \$600.



55. Kiyoshi Saito (Japanese, 1907-1997)
Maiko, Kyoto. Color woodblock. c. 1960. Unnumbered edition. Signed in pencil. Red artist's seal. $15\frac{3}{8} \times 10$ (blocks), $17\frac{1}{4} \times 10\frac{3}{4}$ (sheet). [47805c] \$850.

56. Kiyoshi Saito (Japanese, 1907-1997)
Village Scene with Old Woman. From *Winter in Aizu*. Color woodblock. Signed in pencil. $10\frac{1}{2} \times 15\frac{1}{4}$ (blocks), $11\frac{1}{4} \times 16\frac{1}{2}$ (sheet). Hinge residue at top corners away from image, thin margins. [45894] \$460.



57. Kiyoshi Saito (Japanese, 1907-1997)
Trees in Bloom. Color woodblock. 1984. Edition 85/130. Signed in pencil and chop. Expertly cleaned and backed for strength. 15×21 (blocks), $18\frac{1}{4} \times 23\frac{1}{2}$ (sheet). [29495c] \$2,200.





58. Umetaro Azechi (Japanese, 1902-1999) *Glacial Snow*. Color woodblock. 1954. Signed. 11 x 15¼ (blocks), 12¼ x 16⅝ (sheet). [53266c] \$850.



59. Umetaro Azechi (Japanese, 1902-1999) *Man with Mug and Cigarette*. Color woodblock. Signed. 15⅞ x 10⅝ (blocks), 17⅞ x 11⅞ (sheet). [53268c] \$800.



60. Umetaro Azechi (Japanese, 1902-1999) *Mountaineer Holding Bird*. Color woodblock. Signed. 13¾ x 10 (blocks), 15¼ x 11⅝ (sheet). [53257c] \$750.

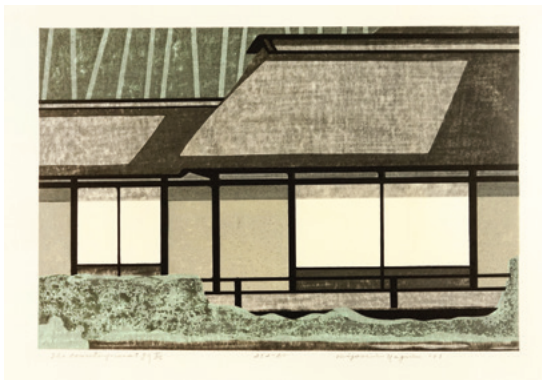


61. Umetaro Azechi (Japanese, 1902-1999) *Mountaineer Holding Cup and Bird*. Color woodblock. Signed. 15¼ x 9⅞ (blocks), 16⅝ x 11¼ (sheet). [53262c] \$750.

63. RIGHT: Kiyoshi Nagai (Japanese, 1911-1984) *Light and Shade*. Color woodblock. 1971. Edition 81/252. Signed. 10 x 14¼ (blocks), 12½ x 19⅝ (sheet). [53161c] \$375.



64. Kiyoshi Nagai (Japanese, 1911-1984) *The Country Seat*. Color woodblock. 1971. Edition 60/252. Signed. 10 x 14⅝ (blocks), 12½ x 19⅞ (sheet). [53165c] \$425.



Hiroyuki Tajima and Kiyoshi Nagai are the same artist and thus share the same dates. His practice was to use Nagai for his representational images and Tajima for the abstract.



62. Kiyoshi Nagai (Japanese, 1911-1984) *Garden in the Early Spring*. Color woodblock. 1972. Edition 46/252. Signed. 14¼ x 10 (blocks), 19½ x 15¼ (sheet). [53163c] \$385.



65. Shiko Munakata (Japanese, 1903-1975) *Rahula, Master of the Esoteric*. From *Ten Great Disciples of Buddha*. Woodcut. Date of Block 1937. Date of Impression 1958. Signed. Red muna seal. Toning at margin edge. $3\frac{3}{4} \times 11\frac{1}{8}$ (block), $40\frac{1}{4} \times 16$ (sheet). [53246c] \$28,000.



66. Shiko Munakata (Japanese, 1903-1975) *Self Portrait with Horned Owl*. Lithograph. 1967. Edition 23/50. Signed. $11\frac{3}{4} \times 8\frac{1}{2}$ (image), 14×11 (sheet). [53291c] \$1,500.



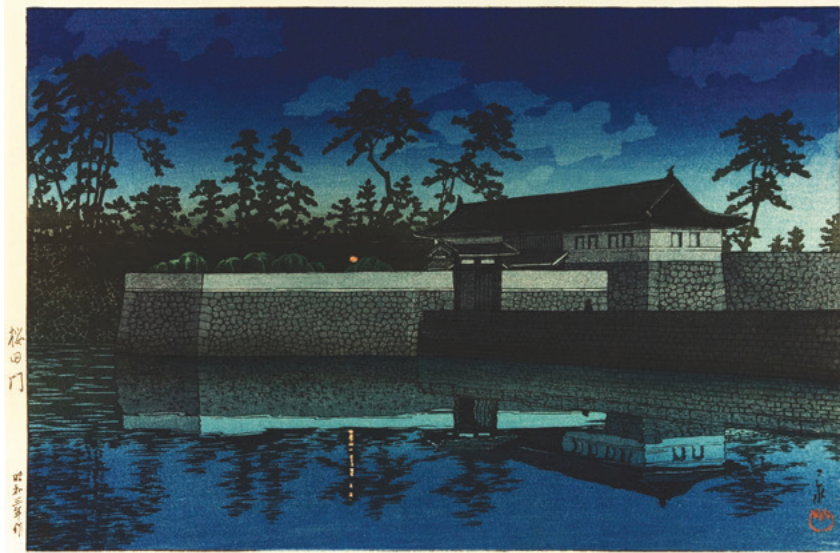
67. Shiko Munakata (Japanese, 1903-1975) *The Sand Nest (Sunasu no saku)*. From *The Story of the Cormorant (Uto hangakan)*. Woodcut. Date of Block 1938. Date of Impression 1958. Signed. Red muna seal. Reference: Kodansha vol. 1, no. 53. $8\frac{7}{8} \times 11\frac{1}{8}$ (block), $13\frac{1}{8} \times 16$ (sheet). [53231c] \$4,000.



68. Kawase Hasui (Japanese, 1883-1957) *Kikoji Temple, Nara (Kikoji, Naraken)*. Color woodblock. c. 1950. Watanabe stamp. Published by Shozaburo Watanabe. Rich color. Oban. [53229c] \$1,400.



69. Kawase Hasui (Japanese, 1883-1957) *Kiso River Glowing Light at Fuji (Kisogawa yugure no Fuji)*. Woodcut. 1930s. Artist's seal. Published by Shozaburo Watanabe. Slightly toned. Koban. [52693c] \$225.



70. Kawase Hasui (Japanese, 1883-1957) *Sakurada Gate of the Imperial Palace (Sakurada mon)*. From *Twenty Views of Tokyo (Tokyo nijukei)*. Color woodblock. 1928. Artist's stamp. Published by Shozaburo Watanabe. Rich color. Oban. [53236c] \$1,500.

71. Maeda Morikazu (Japanese, b. 1932)
Wooden Bridge. Woodcut. 1981. Edition 6/40.
 Signed. 12 x 17 (image), 14½ x 19½ (sheet).
 [47719c] \$385.



72. Gyojin Murakami (Japanese, 1911-1998)
White Horses Jumping the Sea. Two color
 woodblock. 1974. Edition 84/100. Signed.
 12¼ x 16½ (blocks), 14⅞ x 18¾ (sheet).
 [53213c] \$485.



73. Kawase Hasui (Japanese, 1883-1957)
*Udo Tower, Kumamoto Castle (Kumamotojo
 Udayagura)*. Color woodblock. Date of Block
 1948. Later impression. Signed Hasui. Artist's
 red seal. Published by Shozaburo Watanabe.
 Reference: Watanabe/Narazaki 494. Oban.
 [53041c] \$585.



74. Gyojin Murakami (Japanese, 1911-1998) *Breeze*.
 Two color woodblock. 1974. Edition 84/100. Signed.
 Faint toning. 15 x 12½ (blocks), 17 x 13¾ (sheet).
 [53212c] \$475.



75. Hiroshi Yoshida (Japanese, 1876-1950) *Tea House in Azalea Garden (Yasumi chaya)*. Color woodblock. Date of Plate 1938. Signed in pencil. Jizuri seal. Reference: Abe 226. Faint staining verso and front. Oban. [48778c] \$2,500.



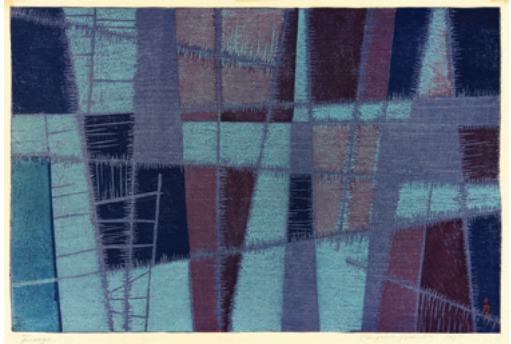
76. Hiroshi Yoshida (Japanese, 1876-1950) *Himeji Castle-Evening (Himeji-jo-yu)*. Color woodblock. Date of Block 1928. Signature and chop within the image. Hiroshi seal. Reference: Blakeney 101, Abe 78. Oban. [53181c] \$625.



77. Toshi Yoshida (Japanese, 1911-1995) *Indian Village, New Mexico*. Color woodblock. 1956. Signed. $10\frac{3}{4} \times 19\frac{3}{8}$ (blocks), $16\frac{3}{8} \times 22\frac{1}{2}$ (sheet). [53187c] \$850.



78. Hodaka Yoshida (Japanese, 1926-1995) *Tea House (Chashitsu)*. Color woodblock. 1956. Edition 136/200. Signed. $17\frac{1}{2} \times 9\frac{5}{8}$ (blocks), $22\frac{5}{8} \times 16\frac{1}{2}$ (sheet). [53186c] \$825.



79. Chizuko Yoshida (Japanese, 1924-2017) *Freeze*. Color woodblock. 1955. Signed. Tape residue at top margin edge. Oban. [53185c] \$325.



80. Tokuriki Tomikichiro (Japanese, 1902-1999) *Golden Pavilion in Winter, Kinkakuji Temple*. From *Four Seasons of Kyoto*. Color woodblock. 1957. Printed and published by Uchida. 12 x 13 (blocks), 12¾ x 15⅝ (sheet). [53207c] \$325.



82. Tokuriki Tomikichiro (Japanese, 1902-1999) *Spring: Cherry Blossoms and Mt. Fuji at Tateho (Tateho no Sakura)*. From *Four Seasons of Mt. Fuji*. Color woodblock. 1957. Printed and published by Uchida. Faint hinge residue at top left margin corner. 10¼ x 15 (blocks), 11 x 16 (sheet). [53208c] \$285.

83. Tokuriki Tomikichiro (Japanese, 1902-1999) *Woman Combing Her Hair (Study of the Artist's Wife)*. Color woodblock. 1955. Edition 3/100. Signed in pencil. Tomo seal. Oban. [53202c] \$450.



81. Shigeharu / Kunishige (Japanese, 1803-1853) *Actor Portrait*. From *Biographies of Brave Men at the Height of their Careers (Eika jinyuden)*. Color woodblock. Chuban. [52698c] \$275.



84. Hodaka Yoshida (Japanese, 1926-1995) *Buddhist Statues (Hakuho Butsu)*. Color woodblock. 1954. Signed. Oban. [53184c] \$625.



85. Haku Maki (Japanese, 1924-2000) *Persimmon 72-70*. Color relief print with embossing. Edition 12/104. Signed. 14 $\frac{1}{8}$ x 10 (block), 16 x 11 $\frac{3}{4}$ (sheet). [51888c] \$985.



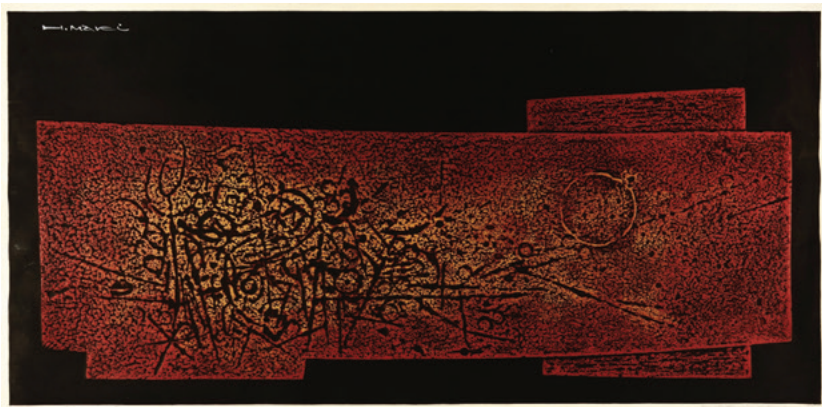
87. Haku Maki (Japanese, 1924-2000) *Work 75-24*. Color relief print with embossing. Edition 60/204. Signed. 7 $\frac{3}{4}$ x 7 $\frac{3}{4}$ (blocks), 9 $\frac{1}{2}$ x 9 $\frac{1}{4}$ (sheet). [53170c] \$850.

86. Haku Maki
(Japanese, 1924-2000)
Poem 71-71. Color relief
print with embossing.
Edition 67/201. Signed.
6 $\frac{5}{8}$ x 4 $\frac{5}{8}$ (blocks), 8 $\frac{5}{8}$
x 5 $\frac{3}{4}$ (sheet). [53175c]
\$425.

Many other images
by Haku Maki are
available for viewing
on our website under
the artist's name.



88. Haku Maki
(Japanese, 1924-2000)
Poem 70-56. Color relief
print with embossing.
Edition 133/151. Signed.
6 $\frac{5}{8}$ x 4 $\frac{3}{4}$ (blocks),
8 $\frac{1}{2}$ x 5 $\frac{3}{4}$ (sheet). [53174c]
\$425.



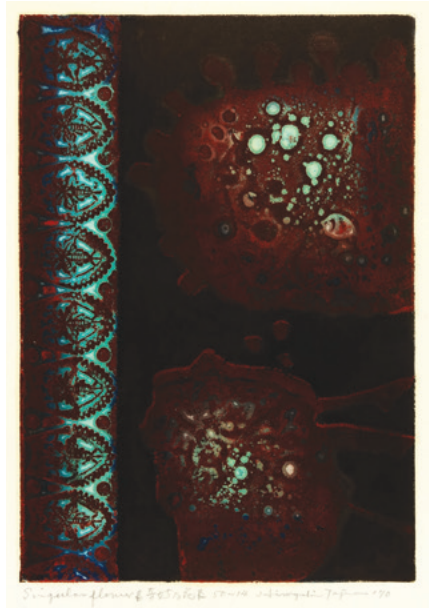
89. Haku Maki (Japanese, 1924-2000) *Emanation-5*. Color relief print with embossing. Edition 19/30. Signed. 11 $\frac{1}{4}$ x 23 $\frac{1}{4}$ (block), 11 $\frac{7}{8}$ x 24 (sheet). [51898c] \$750.



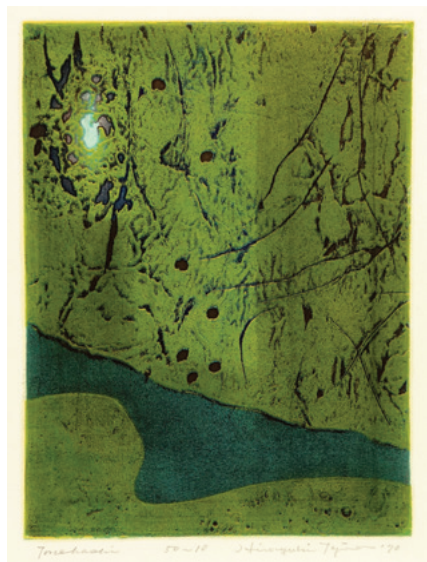
90. Yoshitoshi Mori (Japanese, 1898-1992) *Goro, Kabuki Warrior Portrait*. Color stencil print. Signed and stamped. $14\frac{1}{2} \times 10\frac{7}{8}$ (image), $16\frac{1}{2} \times 12$ (sheet). [53244c] \$475.



91. Yoshitoshi Mori (Japanese, 1898-1992) *Kamakura Gongoro, Kabuki Super Hero*. Color stencil print. 1970. Signed and stamped. $15\frac{3}{4} \times 11$ (image), $17\frac{1}{2} \times 11\frac{7}{8}$ (sheet). [53245c] \$525.



92. Hiroyuki Tajima (Japanese, 1911-1984) *Singular Flower*. Color woodblock. 1970. Edition 14/50. Signed. 12×9 (blocks), $19\frac{5}{8} \times 12\frac{3}{8}$ (sheet). [53227c] \$450.



93. Hiroyuki Tajima (Japanese, 1911-1984) *Tonehaahi*. Color woodblock. 1970. Edition 10/50. Signed. 12×9 (blocks), $19\frac{5}{8} \times 12\frac{3}{8}$ (sheet). [53226c] \$425.



94. Jun'ichiro Sekino (Japanese, 1914-1988)
Pond of Night. Color woodblock. 1957.
Edition 87/200. Signed. Reference: Statler/
Sekino cat. 38. 17 x 9³/₈ (blocks), 22 x 14¹/₄ (sheet).
[53237c] \$950.



95. Shiro Kasamatsu (Japanese, 1898-1991)
Kegon Waterfall. Color woodblock. Signed. Red seal. Early printing by Mikumo. Oban. [53222c] \$350.



96. Jun'ichiro Sekino (Japanese, 1914-1988)
Lovesick Cat. Color woodblock. 1957. Brush signed and sealed within the image. Reference: Statler/Sekino cat. 37. 17¹/₈ x 10 (blocks), 21 x 14¹/₈ (sheet). [53225c] \$625.



97. Shiro Kasamatsu (Japanese, 1898-1991)
Fishing Boat. Color woodblock. Early printing by Mikumo. Oban. [53220c] \$325.



98. Jun'ichiro Sekino (Japanese, 1914-1988)
Puppeteer Bungro on Stage. Color woodblock. 1953. Signed in pencil. Artist's stamp. Reference: Statler/Sekino cat. 4. 19 x 23³/₄ (blocks), 23¹/₂ x 28 (sheet). [47847c] \$1,800.



99. Tadashi Nakayama (Japanese, b. 1927) *Swift Horse (B)*. Color woodblock. Date of Impression 1993. Edition 16/95. Signed, dated and numbered in pencil. A few spots of foxing in broad margins. $11\frac{3}{4} \times 8\frac{3}{4}$ (blocks), $16\frac{3}{4} \times 13$ (sheet). [31214c] \$1,500.



100. Kiyokata Kaburagi (Japanese, 1878-1973) *The Heroine Osai in Yari no Gonza Kasane Katabira*. From *The Complete Works of Chikamatsu (Dai Chikamatsu Hanga Zenshu)*. Color woodblock. 1923. Carved by Yamagishi Kazue. Printed by Nishimura Kumakichi. Signed Kiyokata saku. Red artist's seal. $12\frac{5}{8} \times 9\frac{3}{8}$ (blocks), $18\frac{1}{4} \times 11\frac{1}{4}$ (sheet). [24695c] \$950.



101. Tadashi Nakayama (Japanese, b. 1927) *Girl with Flowers*. Color woodblock. 1956. Signed. $8\frac{7}{8} \times 7\frac{1}{2}$ (blocks), $12\frac{3}{4} \times 12\frac{1}{2}$ (sheet). [53169c] \$375.



102. Tadashi Nakayama (Japanese, b. 1927) *Girl on a Windy Day*. Color woodblock. 1956. Signed. $7\frac{5}{8} \times 9\frac{1}{2}$ (blocks), $11 \times 11\frac{7}{8}$ (sheet). [53168c] \$385.



103. Toshijiro (Nenjiro) Inagaki (Japanese, 1902-1963) *The Spring of Mountain Village*. Color woodblock. 10¼ x 15¾ (blocks), 11½ x 15¾ (sheet). [53190c] \$285.



104. RIGHT: Taizo Minagawa (Japanese, 1917-2005) *Farmer's House, Shirakawa Village*. Color woodblock. 1958. Edition 6/30. Sealed. Printed and published by Mikumo. 15¼ x 9¼ (blocks), 16¼ x 10¼ (sheet). [53166c] \$325.



105. Toshijiro (Nenjiro) Inagaki (Japanese, 1902-1963) *Aoi Festival*. Color woodblock. 1958-1959. Edition 25/30. Printed and published by Mikumo. Faint hinge residue at top margin edge. Oban. [53194c] \$300.



106. RIGHT: Sadanobu Hasegawa III (Japanese, 1881-1963) *Princess Yaegaki in Honcho Nijushko (Kabuki)*. Color woodblock. Printed and published by Uchida. Oban. [53198c] \$200.



107. LEFT: Kiyokata Kaburagi (Japanese, 1878-1973) *Kazue and Her Daughter*. Frontispiece (kuchi-e) for *Uzumaki (Whirlpool)* vol. 3. Color woodblock. c. 1890-1912. First edition. Usual trimming and folds of kuchi-e format. $12\frac{3}{8} \times 8\frac{1}{2}$ (blocks). [24715c] \$850.

108. RIGHT: Kiyokata Kaburagi (Japanese, 1878-1973) *Young Girl in Pinafore*. Frontispiece (kuchi-e) for *Uzumaki (Whirlpool)* vol. 2. Color woodblock. c. 1890-1912. First edition. Usual trimming and folds of kuchi-e format. $12\frac{1}{8} \times 8\frac{1}{2}$ (blocks). [24711c] \$850.



109. LEFT: Toshijiro (Nenjiro) Inagaki (Japanese, 1902-1963) *Toji Temple Pagoda*. Color woodblock. 1959. Edition 21/30. Kyoto Japan red seals. Printed and published by Mikumo. Oban. [53192c] \$320.

110. RIGHT: Kiyokata Kaburagi (Japanese, 1878-1973) *Woman with Parasol*. Frontispiece (kuchi-e) for *Yuriko*. Color woodblock. c. 1890-1912. First edition. Usual trimming and folds of kuchi-e format. $10\frac{1}{8} \times 7\frac{7}{8}$ (blocks), $11\frac{3}{4} \times 8\frac{3}{4}$ (sheet). [24714c] \$850.



111. LEFT: Tsuchiya Koitsu (Japanese, 1870-1949) *Benkei Bridge*. From *Tokyo Fukei*. Color woodblock. Date of Impression March 1936. Date of Blocks 1933. Published by Doi Hangaten. Signed. Chop. Oban. [52481c] \$450.

112. RIGHT: Eiichi Kotozuka (Japanese, 1906-1979) *Farmer in Kyoto (Working)*. Color woodblock. Early unnumbered edition. Printed and published by Uchida. A few spots of foxing at bottom right margin. $15\frac{3}{4} \times 8\frac{3}{8}$ (blocks), $17\frac{1}{2} \times 11\frac{5}{8}$ (sheet). [53250c] \$250.





113. Sasajima Kihei (Japanese, 1906-1993) *Mountain in Summer*. Woodcut. Red stamp. $4\frac{3}{4} \times 5\frac{7}{8}$ (block), $5 \times 6\frac{1}{8}$ (sheet). [53240c] \$165.



114. Sasajima Kihei (Japanese, 1906-1993) *Hanging Bridge (Tsuru Bashi)*. Woodcut. c. 1950s. Red stamp. $4\frac{3}{4} \times 5\frac{7}{8}$ (block), $5 \times 6\frac{1}{8}$ (sheet). [53241c] \$170.

Selected Asian Prints Mid-19th Century–Mid-20th Century

CONTACT: Rebecca McDonald, (206) 624-7684
or rebecca@davidson galleries.com

An additional impression may be available for certain works. Listed prices apply to the impression shown. Prices may vary for additional impressions. All items are guaranteed as described. Certificate of authenticity is available upon request. Please contact the gallery with questions or to discuss a work in detail. **All dimensions are given in inches, height precedes width.** Orders are shipped promptly upon receipt of full payment. Works are normally shipped insured via UPS unless other arrangements are specified. Shipping charges vary and are dependent on size and value of items ordered. Washington State residents must add appropriate sales tax. Items may be sent “on approval” beginning two weeks after initial catalog release. Works may be returned to the gallery for any reason within two weeks of purchase for a full refund less shipping. Returned works should be securely packed and fully insured.

Please inform the gallery of any special collecting interests. Davidson Galleries is willing to consider purchasing or consigning fine original prints individually or as collections.

Davidson Galleries is a charter member of the **International Fine Print Dealers Association** and is committed to its strict ethical standards.

IFPDA MEMBER

DOWNLOADABLE CATALOGS AVAILABLE

As part of our commitment to produce less waste, we are proud to offer our catalogs as downloadable PDFs through **davidson galleries.com**. Visit the publications page on the website to download free of charge.

If you would prefer to continue receiving our semi-annual printed catalogs by mail, **annual subscriptions are available for \$12**, deductible from your first catalog purchase. Please contact the gallery for details.



Join our bi-monthly
email newsletter!

DAVIDSON GALLERIES

313 Occidental Avenue South | Seattle, Washington 98104
Open by appointment & walk-ins | Tuesday-Saturday 11-5:30

CHANGE SERVICE REQUESTED

www.davidsonalleries.com

Selected Asian Prints Mid-19th Century–Mid-20th Century



115. Zuigetsu Ikeda (Japanese, 1877-1944) *Peonies*. Color woodblock. Date of impression 1957. Signed and chop within the image. Printed and published by Uchida. Oban. [53278c] \$165.

\$6.00