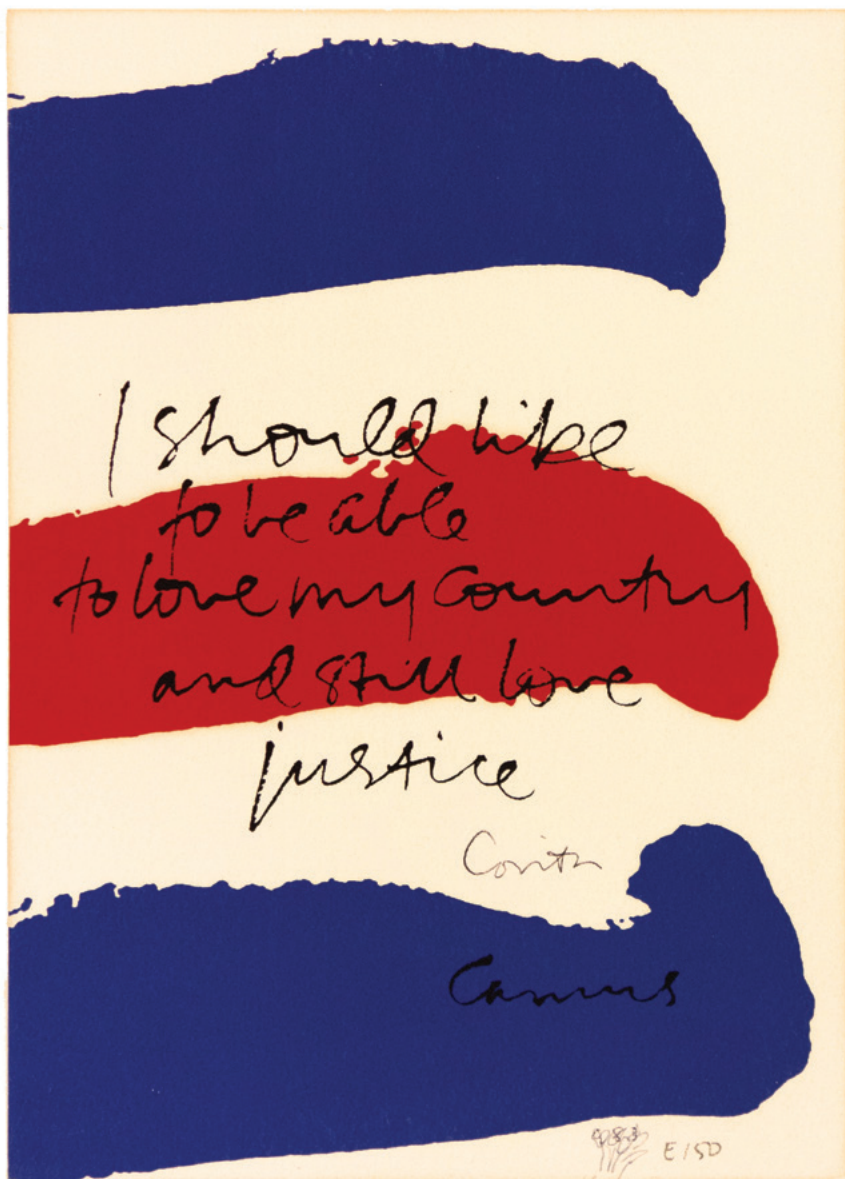


SISTER MARY CORITA KENT

Speak Out!



DAVIDSON GALLERIES

COVER IMAGE: *my country (I should like to be able to love my country and still love justice)*. Serigraph. Signed. 1981. Edition of 150. Corita Art Center 81-03. $6\frac{3}{4} \times 4\frac{3}{4}$ (image), 7 x 5 (sheet). [53880c] \$1,600.



1. *Fiat*. Color silkscreen. Signed. 1953. Edition of 210. Duncan 53-04. Faint mat burn. Toned verso. $15\frac{1}{2} \times 21\frac{1}{2}$ (image), 18 x 24 (sheet). [53284c] \$700.



2. *This Beginning of Miracles*. Silkscreen. Signed and dated. 1953. Edition of 210. Duncan 52-04. Toned, especially verso. $15\frac{1}{2} \times 19\frac{3}{8}$ (image), 16 x 20 (sheet). [53285c] \$750.



3. *miraculous draught of fishes*. Serigraph. Signed. 1956. Corita Art Center 56-05. Some condition issues; please inquire. $15\frac{1}{2} \times 21\frac{3}{4}$ (image), $17\frac{1}{2} \times 23\frac{3}{4}$ (sheet). [53887c] Price on request.



4. *Gloria in Excelsis Deo (Christmas Card)*. Offset lithograph. 1955. Designed for the Museum of Modern Art, NY. Glue residue and message on verso. Usual folds. $10\frac{5}{8} \times 7$ (image), $11\frac{1}{2} \times 8\frac{1}{2}$ (sheet). [53877c] \$40.

CORITA KENT (1918-1986)

Corita Kent became a nun at the age of 18, at the time that her family moved from Iowa to Hollywood, California, where she joined the Sisters of the Immaculate Heart of Mary and took the name of Sister Mary Corita.

After studying and teaching at the Immaculate Heart College in LA, and later while earning her Master's Degree in Art History at USC, she became aware of and proficient in the silkscreen (or serigraph) process.

Sister Mary Corita embraced this process as the perfect medium for expressing and sharing her strong responses to traditional Catholic doctrine and contemporary social positions. Her images and messages made powerful use of elements of Abstract Expressionism, and beginning in 1955, of the graphic qualities of the typography associated with commercial advertising. The positions she addressed often found articulation in an unexpected confluence of religious and secular expressions through the shared association of a word or phrase.

In the 1960's, affected by Pope John XXIII's changes to the church's teachings and influenced by artist Andy Warhol's imagery, based on social figures and product based iconography, Corita's work evolved into what became known as "Spiritual Pop."

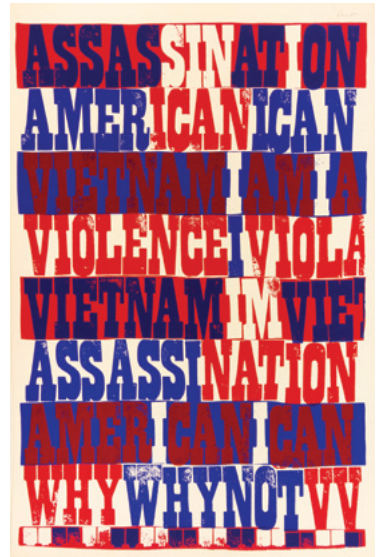
This small sampling of the artist's work illustrates the enormous impact that one person, one nun, can have. The Gallery wishes to thank Charles Lehman for making this part of his collection available to us.



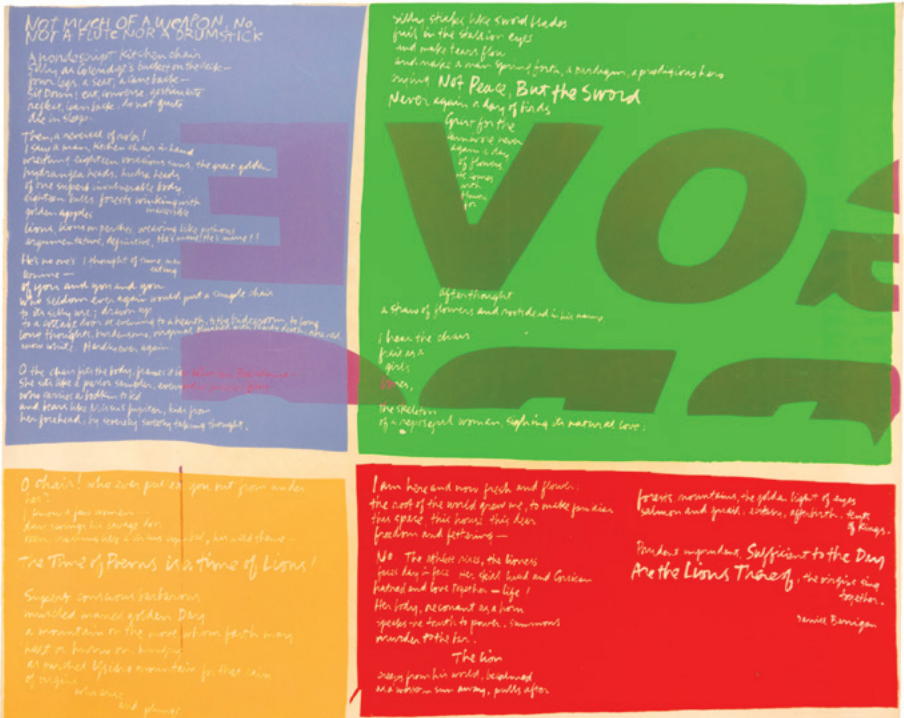
5. *Apocalypse*. Color silkscreen. Signed. 1958. 21⁷/₈ x 30¹/₄ (image), 24 x 33 (sheet). [47891c] \$2,200.



6. a piece of good news #1 #2. Serigraph. Signed in ink. 1963. Edition of 60. Corita Art Center 63-04. 15 $\frac{3}{8}$ x 17 (image), 19 x 17 (sheet). [53890c] \$1,200.



7. american sampler. Serigraph. Signed. 1969. Corita Art Center 69-65. 17 $\frac{1}{2}$ x 11 $\frac{1}{2}$ (image), 19 x 12 (sheet). [53876c] \$2,500.



8. not much of a weapon. Serigraph. Signed. 1966. Edition of 100 (Rare). Corita Art Center 66-13. 30 x 35 $\frac{3}{4}$ (image), 30 x 36 (sheet). [53901c] \$3,800.



9. *a i love that one (The circus...)*. From *Circus Alphabet*. Serigraph. Signed. 1968. Corita Art Center 68-31. 15 x 15½ (image), 16 x 16½ (sheet). [53897c] \$2,500.



10. *z do your thing (But do your thing and I shall know you)*. From *Circus Alphabet*. Serigraph. Signed. 1968. Corita Art Center 68-56. 22½ x 22½ (image), 23 x 23 (sheet). [53894c] \$2,800.



11. *q elephant's q (John Dewey says...)*. From *Circus Alphabet*. Serigraph. Signed. 1968. Corita Art Center 68-47. 22½ x 22½ (image), 23 x 22½ (sheet). [53893c] \$2,850.



12. *p prize boxes (Circus performers know that they can break their necks...)*. From *Circus Alphabet*. Serigraph. Signed. 1968. Corita Art Center 68-46. 22 x 22 (image), 23 x 23½ (sheet). [53895c] \$3,000.



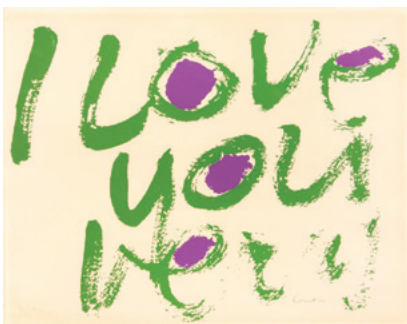
13. *n willing to be vulnerable (Those who are willing to be vulnerable...)*. From *Circus Alphabet*. Serigraph. Signed. 1968. Corita Art Center 68-44. 22½ x 22½ (image), 23 x 23½ (sheet). [53896c] \$2,850.



14. *to believe in man*. From *Trilogy of Belief*. Words by Joseph Pintauro. Book. 1970. First edition. Published by Harper & Row, NY. Provenance: Lakeridge High School Library, Lake Oswego OR stamp. Tape and other issues inside, front and back. Contents in good condition. $6\frac{1}{4} \times 6\frac{1}{4} \times \frac{1}{2}$. [53906c] \$100.



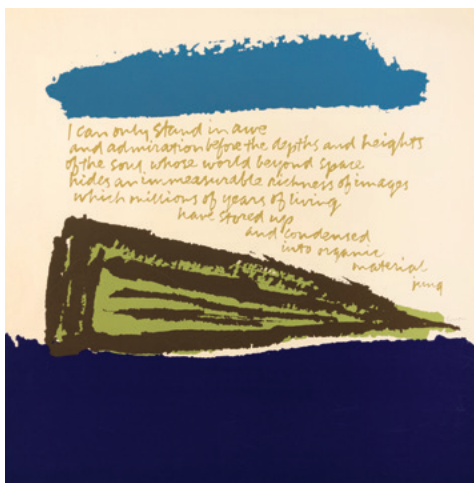
16. *to believe in things*. From *Trilogy of Belief*. Words by Joseph Pintauro. Book. 1971. First edition. Published by Harper & Row, NY. Dust jacket worn. $6\frac{1}{8} \times 6\frac{1}{4} \times \frac{1}{2}$. [53907c] \$225.



17. *i love you very*. Serigraph. Signed. 1971. Edition of 200. Toned. $7\frac{1}{2} \times 9\frac{1}{2}$ (image), 8×10 (sheet). [53878c] \$1,100.



15. *Sister Corita*. From *Trilogy of Belief*. Essays by Sister Mary Corita Kent, Harvey Cox, and Samuel A. Eisenstein. Contains book with 24 reproductions of Corita's art (this set is incomplete; complete book would contain 34 reproductions). 1968. First edition. Published by Pilgrim Press, Philadelphia & Boston with United Church Press. Binding loose. Clam shell box damaged. $15 \times 11 \times 1\frac{1}{4}$ (box cover). [53908c] \$385.



18. *in awe (I can only stand in awe and admiration...)*. Serigraph. Signed. 1971. Corita Art Center 71-01. Lightly toned and slight rubbed areas in dark blue. $21\frac{1}{2} \times 22\frac{1}{2}$ (image), $22\frac{7}{8} \times 23$ (sheet). [53892c] \$2,000.



19. *the eye in the sun* (Something unbearable makes it possible to break thru a ceiling). Serigraph. Signed. 1972. Edition of 200. Corita Art Center 72-06. Toned. $22\frac{1}{2} \times 20\frac{1}{4}$ (image), 23×23 (sheet). [53883c] \$2,000.



20. *men will kindle light* (...even in the darkest of times...). Serigraph. Signed. 1972. Edition of 260. A few scuff marks lower left. $11\frac{1}{2} \times 16$ (image), $12 \times 16\frac{5}{8}$ (sheet). [53902c] \$1,250.



21. *let your mind be quiet* (Let your mind be quiet, realizing the beauty of the world...). Serigraph. Signed. 1972. Edition of 200. Corita Art Center 72-11. $22\frac{1}{2} \times 22$ (image), $22\frac{7}{8} \times 22\frac{3}{4}$ (sheet). [53888c] \$2,400.



22. *Psalms/Now*. Words by Leslie Brandt. Book. 1973. Published by Concordia Publishing House, St. Louis. Dust jacket torn at top left. $8\frac{1}{4} \times 5\frac{1}{2} \times \frac{5}{8}$. [53905c] \$25.



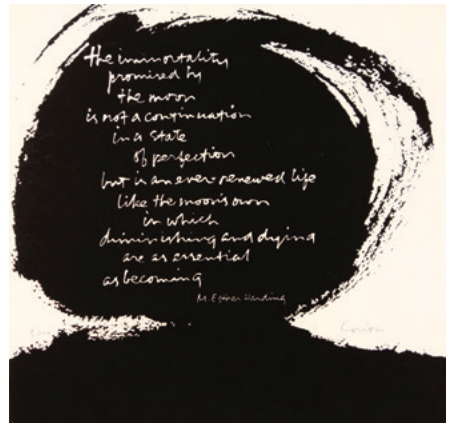
23. works of art are an infinite loneliness. Serigraph. Signed. 1973. Edition of 207. Corita Art Center 73-09. Toned. Partially attached to backing sheet. 22 $\frac{1}{8}$ x 33 $\frac{3}{8}$ (image), 22 $\frac{1}{4}$ x 34 $\frac{1}{4}$ (sheet). [53899c] \$2,600.



24. here, where an immense country. Serigraph. Signed. 1973. Edition of 210. Corita Art Center 73-11. Toned. Partially attached to backing sheet. 22 $\frac{1}{4}$ x 33 $\frac{1}{2}$ (image), 22 $\frac{1}{4}$ x 34 $\frac{1}{4}$ (sheet). [53891c] \$2,500.



25. bicentennial #2. Serigraph. Signed, titled, and editioned in pencil. 1976. Edition of 75. Corita Art Center 76-03. 9 $\frac{1}{2}$ x 11 $\frac{1}{8}$ (image), 10 x 11 $\frac{7}{8}$ (sheet). [53879c] \$2,000.



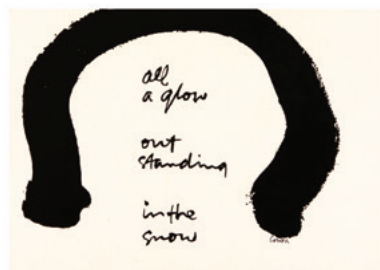
26. the immortality of the moon. Serigraph. Signed. 1976. Edition of 200. Corita Art Center 76-12. Bottom $\frac{1}{4}$ of sheet slightly rubbed. 11 x 11 $\frac{3}{8}$ (image/sheet). [53903c] \$1,600.



27. *circus '80 (Damn every thing but the circus)*. Serigraph. Signed. 1980. Corita Art Center 80-11. 18³/₈ x 13³/₈ (image/sheet). [53886c] \$1,500.



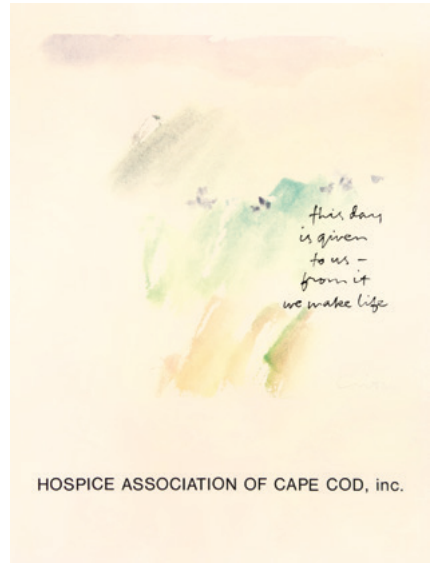
28. *the common dandelion (The invariable mark of wisdom is to see the miraculous in the common)*. Serigraph. Edition of 300. Corita Art Center 80-01. 18¹/₈ x 18 (image), 20 x 20 (sheet). [53884c] \$2,500.



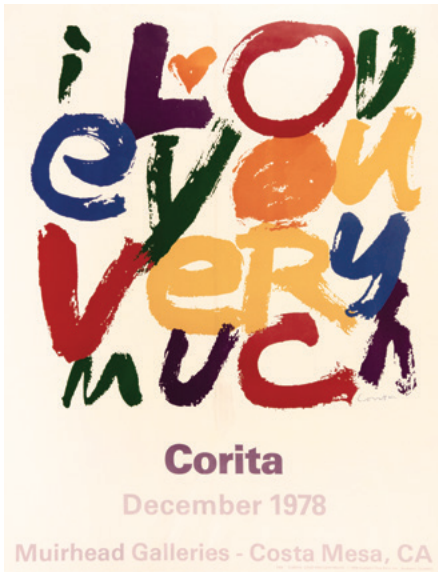
29. *All a glow out standing in the snow*. Words by Bernard Gunther. Offset lithograph. Published by Harper & Row, 1974. 5 x 7 (card). Accompanied by another card of Corita's Banner featuring a photo by B.A. King (1978) and words from St. John Chrysostom, included with purchase. [53881c] \$60.



30. *Opportunities for Women are as Great as the Hope that Leads to Action (Poster)*. Offset lithograph poster on glossy stock after the serigraph. 1982. Published by The Commonwealth of Massachusetts—Governor's Commission on the Status of Women. Tears and creases. 24 x 18½ (sheet). [53900c] \$75.



31. *This Day Is Given to Us (Poster)*. Offset lithograph poster. Published by Hospice Association of Cape Cod, Inc. 23⅞ x 18 (sheet). [53885c] \$85.



32. *Corita: December 1978 (Poster for Muirhead Galleries - Costa Mesa, CA)*. Offset lithograph poster after the original serigraph titled *much* (Corita Art Center 71-03). Published by Haddad's Fine Arts, Inc. Anaheim, CA. Crumpled and water stained. 28 x 22 (sheet). [53889c] \$85.



33. *This Day is Given to Us (Poster)*. Offset lithograph on glossy stock. 20 x 18 (sheet). [53898c] \$90.



34. 3 Envelopes with Love Stamps. Using image by the artist for the United States Post Office. [53882c] \$25.

SISTER MARY CORITA KENT—FALL 2021

CONTACT: Rebecca McDonald, (206) 624-7684
or rebecca@davidson galleries.com

Listed prices apply to the impression shown. Prices may vary for additional impressions. All items are guaranteed as described. Certificate of authenticity is available upon request. Please contact the gallery with questions or to discuss a work in detail. **All dimensions are given in inches, height precedes width.** Orders are shipped promptly upon receipt of full payment. Works are normally shipped insured via UPS unless other arrangements are specified. Shipping charges vary and are dependent on size and value of items ordered. Washington State residents must add appropriate sales tax. Items may be sent "on approval" beginning two weeks after initial catalog release. Works may be returned to the gallery for any reason within two weeks of purchase for a full refund less shipping. Returned works should be securely packed and fully insured.

Please inform the gallery of any special collecting interests. Davidson Galleries is willing to consider purchasing or consigning fine original prints individually or as collections.

Davidson Galleries is a charter member of the **International Fine Print Dealers Association** and is committed to its strict ethical standards.

DOWNLOADABLE CATALOGS AVAILABLE

As part of our commitment to produce less waste, we are proud to offer our catalogs as downloadable PDFs through **davidson galleries.com**. Visit the publications page on the website to download free of charge.

If you would prefer to continue receiving our semi-annual printed catalogs by mail, **annual subscriptions are available for \$12**, deductible from your first catalog purchase. Please contact the gallery for details.



Join our bi-monthly
email newsletter!

IFPDA MEMBER

DAVIDSON GALLERIES

313 Occidental Avenue South | Seattle, Washington 98104
www.davidsongalleries.com | Open Tuesday-Saturday 11-5:30

CHANGE SERVICE REQUESTED

SISTER MARY CORITA KENT-FALL 2021



35. commission-ellsberg poster (wouldn't you go to jail if it would help end the war?). Serigraph. Signed. 1972. Corita Art Center 72-22. Significant damage, especially at top third. Some ink loss and creases. 25 x 30½ (image/sheet). [53904c] \$350.

\$6.00