

LEONARD BASKIN



DAVIDSON GALLERIES

COVER IMAGE: *The Great Bird Man*. Woodcut. 1963. AP. Signed. Fern 447. 61 x 31 (block), 69¼ x 36½ (sheet). [54105c] \$3,200.



1. *Three Nude Men*. Linoleum cut. 1949. Signed. Fern 62. 9⅛ x 7⅛ (image), 15 x 12 (sheet). [45211c] \$1,600.



2. *Fish Lady*. Woodcut. 1949. Edition 2/6. Signed. Fern 24. 45½ x 13¾ (block), 49¼ x 20¾ (sheet). Slightly toned. [54104c] \$1,500.



3. *Son Carrying Father*. Woodcut. 1950. AP. Signed. Fern 82. 44½ x 13¼ (block), 54 x 23½ (sheet). [54106c] \$1,750.



4. *Homage to Gene Debs*. Color woodcut. 1949. AP. Signed. Fern 30. 35 x 22½ (blocks), 45¾ x 32 (sheet). [54114c] \$1,800.



5. *Terrified Old Man*. Woodcut. c. 1950. AP. Signed. Fern 84. 24 x 15¼ (block), 33½ x 20½ (sheet). [45478c] \$1,200.

Leonard Baskin (1922–2000)

Leonard Baskin was born in 1922 in New Brunswick, New Jersey. He studied at New York University, Yale University, the Academie de la Grande Chaumière in Paris, the Accademia di Belle Arte in Florence, and the New School. Baskin taught at Smith College from 1953 to 1974 and at Hampshire College from 1984 to 1994. His first solo exhibition was held at Grace Borgenicht Gallery in 1953. He has had retrospectives at the Smithsonian, the Albertina, and the Library of Congress. He founded and ran the Gehenna Press for fine books until his death. Baskin passed away in 2000. Davidson Galleries presented the artist's last solo exhibition before his death.

Baskin is known for his sculpture and graphic arts, especially monumental woodcuts. He was committed to figurative art in a time when the art world focused on abstract expressionism. His work emphasized portraiture and the human condition, often malformed, exaggerated, and animal-like. Common themes include natural history, the Hebrew bible, Greek mythology, and poetry. As the son of a rabbi who grew up in a Jewish community in Brooklyn, Judaism and the Jewish Orthodox community are commonly featured. He was a frequent collaborator with many writers, especially Ted Hughes. Baskin's work is included in the collections of most major institutions in the United States. He is recognized as a key contributor to the revitalization of fine art presses in addition to his distinction in sculpture and woodcut.

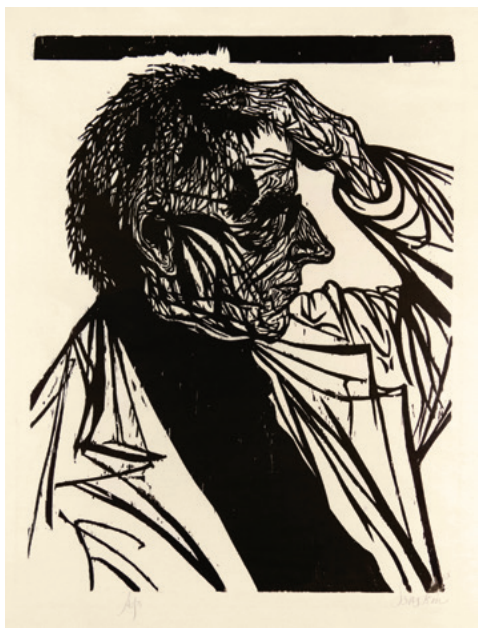
On his subject matter:

"Our human frame, our gutted mansion, our enveloping sack of beef and ash is yet a glory. Glorious in defining our universal sodality and glorious in defining our utter uniqueness. The human figure is the image of all men and of one man. It contains all and can express all."

–Leonard Baskin



6. *Man and Dead Bird*. Woodcut. 1951. AP. Signed. 27¼ x 19½ (block), 36⅛ x 28¼ (sheet). [54111c] \$1,100.



9. *Portrait of an Irishman, Sean O'Casey*. Woodcut. 1952. AP (Regular edition of 15). Signed. Fern 190. 26 x 20¼ (block), 37 x 25 (sheet). [54113c] \$1,500.



7. *Day of Atonement*. Wood engraving. 1952. Signed. Fern 160. 2½ x 1¼ (image), 11½ x 9 (sheet). [45212c] \$400.



8. *Saint Anthony with Red Monster*. Color woodcut. 1952. Edition of 210. Signed. Fern 192. 3¼ x 7½ (blocks), 6½ x 13¼ (sheet). [45214c] \$450.



10. *Two Blind Men*. Wood engraving. 1952. Signed. Fern 215. 7¾ x 4⅞ (block), 14 x 11 (sheet). [54090c] \$800.



11. *Untitled (Male Nude)*. Ink drawing. c. 1952. Unsigned. Partial watermark. 17 x 6¾ (image), 18 x 14 (sheet). Labeled 'unfinished' on verso. Repaired tear (1" in left margin, center. [54094c] \$1,000.

12. *Man with Dog*. Woodcut. 1953. AP. Signed. Fern 221. 35½ x 10¼ (block), 40 x 15½ (sheet). Hinge residue at upper margin edge. Water stain at lower edge of wide margin. [54107c] \$1,250.

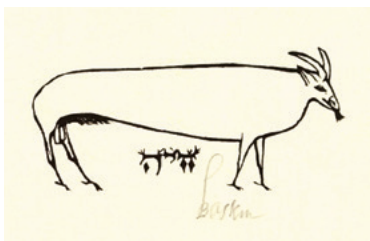


13. *Man with Forsythia*. Wood engraving. 1953. Proof from split block. Signed. Fern 222. 15 x 10⅝ (blocks), 17¼ x 15½ (sheet). [54093c] \$950.

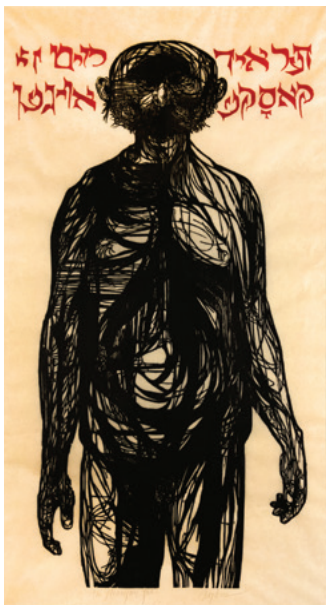
14. *Man with Spring Plants*. Wood engraving. 1953. Edition 138/210. Signed. Published by IGAS (International Graphic Arts Society). Fern 223. 13 x 5¼ (block), 20½ x 13¼ (sheet). Faintly light struck. [54081c] \$950.



15. Page twenty-four (Still Life). From *A Poem Called the Tunning of Elynour Rummyng* by John Skelton. Wood engraving. 1953. Printer's proof. Signed. Published by The Gehenna Press, Worcester. Fern 236. 2 x 3 $\frac{1}{8}$ (image), 7 x 9 $\frac{3}{4}$ (sheet). [25199] \$225.



17. Projected Ex-Libris for CG. Wood engraving. 1954. Printer's proof. Signed. Fern 246. 1 $\frac{3}{4}$ x 3 $\frac{1}{4}$ (image), 17 $\frac{1}{2}$ x 18 (sheet). [25201] \$225.



19. The Strabismic Jew. Woodcut in black with red lettering. 1955. Signed in pencil. Fern 259. 40 $\frac{1}{4}$ x 22 $\frac{1}{2}$ (image), 45 x 24 $\frac{1}{2}$ (sheet). [25611c] \$1,500. Also available framed.

16. The Hanged Man. Woodcut. 1955. AP. Signed. Fern 255. 67 x 20 (blocks), 77 $\frac{1}{2}$ x 32 (sheet). Toned, stain at lower right margin corner. Small loss near right heel. Repaired tear at upper margin. [54115c] \$2,800.



18. Walt Whitman. For a Gehenna Press broadside. Wood engraving. 1955. Edition of 250. Signed. Fern 260. 13 $\frac{7}{8}$ x 3 $\frac{7}{8}$ (block), 20 $\frac{1}{2}$ x 12 (sheet). [54079c] \$750.





20. *Samuel Palmer, after the Watercolor by Walter*. From *Blake and the Youthful Ancients*. Wood engraving. 1956. Printer's proof (Regular edition of 50). Signed. Published by The Gehenna Press, Northampton. Fern 275. $2\frac{1}{4} \times 1\frac{3}{4}$ (image), $17\frac{1}{2} \times 18$ (sheet). [25206] \$265.



21. *Boar*. Wood engraving. 1957. Signed. Fern 304. $2\frac{3}{4} \times 5\frac{3}{4}$ (block), $11\frac{1}{2} \times 14\frac{1}{8}$ (sheet). [54091c] \$475.



23. *The Leper*. For *Flaubert's St. Julien the Hospitaller*. Wood engraving. 1956. Signed. Fern 283. $9 \times 3\frac{1}{2}$ (block), $13\frac{1}{2} \times 6\frac{3}{4}$ (sheet). [54089c] \$900.



22. *Crow*. Wood engraving. 1958. Edition of 50. Signed in pencil. Fern 316. $7\frac{7}{8}$ diameter (image), 11×14 (sheet). [45226c] \$900.



24. *Love Me, Love My Dog*. Wood engraving. 1958. Signed. Fern 353. $7\frac{1}{4} \times 6$ (block), $12 \times 11\frac{3}{8}$ (sheet). Skillfully repaired tears at top and bottom edges of wide side margins. [54086c] \$750.



25. *Woman with Lamb.*
Woodcut. 1958. Edition 2/5.
Signed. $7\frac{1}{2} \times 5\frac{1}{4}$ (block),
 $12\frac{1}{8} \times 9\frac{1}{8}$ (sheet). Archival
hinge residue at upper
margin corners. [54087c]
\$350.



**26. *Naught Can so Deform
the Human Race like the
Armourer's Iron Embrace.*** From
The Auguries of Innocence by
William Blake. Wood engraving.
1959. Edition of 250. Signed.
Published by The Gehenna
Press, Northampton. Fern 371.
Provenance: For the Print Club
of Philadelphia. $5 \times 2\frac{5}{8}$ (block),
 $11 \times 7\frac{3}{4}$ (sheet). [54083c] \$425.



**28. *The Owl that Calls Upon the Night Speaks the
Unbeliever's Fright.*** From *The Auguries of Innocence*
by William Blake. Wood engraving. 1959. Edition
of 250. Signed. Published by The Gehenna Press,
Northampton. Fern 375. Provenance: For the Print
Club of Philadelphia. $4\frac{3}{4} \times 3\frac{1}{2}$ (block), $12\frac{1}{4} \times 10\frac{3}{4}$
(sheet). [54088c] \$375.



27. *Gluttony.* Woodcut.
1960. AP. Signed. $66\frac{3}{4} \times 21\frac{1}{2}$
(block), 74×28 (sheet).
[54109c] \$3,000.



29. *Torment.* Woodcut. 1959. Proof. Signed. Fern
368. 31×23 (block), $40 \times 30\frac{1}{8}$ (sheet). Two small
holes in upper margin. [54112c] \$1,250.



30. *Sacrifice of Isaac*. Woodcut. 1960. Edition 21/50. Signed. Fern 411. Provenance: Ferdinand Roten Galleries, Baltimore. 17 x 15 (block), 20 x 16¼ (sheet). [53599c] \$1,250.



31. *Birdman*. Ink drawing reproduction. 1961. Printed signature. 20 x 12⅝ (image), 26 x 20 (sheet). [54103c] \$300.



32. *Birdman*. Wood engraving. 1962. Signed. Fern 421. Provenance: For Grace Borgenicht Gallery exhibition announcement, *Sculpture and Drawings by Leonard Baskin*. 7⅞ x 4½ (block), 12 x 9 (sheet). Hinge residue verso. [54084c] \$275.



33. *Leonard Baskin AET 42*. Color woodcut. 1962. AP. Signed. Fern 420. 32 x 23½ (blocks), 35 x 24 (sheet). [45115c] \$825.



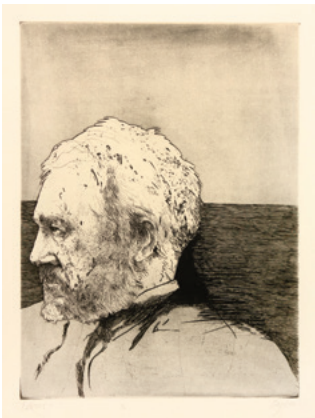
34. (LEFT): *Death Among the Thistles*. Wood engraving. 1962. AP. Signed. Dedicated. Fern 379. 6 x 8 (block), 9⅞ x 10 (sheet). [54085c] \$850.



35. Matthias Gruenewald, German
 1470-1528. From *Etchings of Ten Favorite Artists*. Etching. 1962. Edition 1/50. Signed.
 Published by Herman D. Schickman,
 Delphic Arts, NY. Fern 428. 17¾ x 14¾
 (plate), 29½ x 20½ (sheet). [45229c]
 \$1,200.



37. William Blake, English 1757-1827.
 Mixed etching and aquatint. 1962. AP.
 Signed. Fern 425. 17½ x 14½ (plate),
 29¼ x 20½ (sheet). Beautiful, rich
 impression. [48876c] \$650.



38. Thomas Eakins. Etching. 1964.
 Edition 7/90. Signed. Fern 465.
 17¾ x 13⅞ (plate), 29¾ x 21 (sheet).
 [45232c] \$1,800.



36. Mabuse. Woodcut. 1963. AP. Signed. Fern 452.
 14 x 13½ (block), 20½ x 19 (sheet). Green paper
 color lost where not covered by mat. [54108c] \$600.



39. The Mysterious Rebbe of Northampton,
Massachusetts. Woodcut. 1964. Edition 207/250.
 Signed. Fern 468. 20⅞ x 15¼ (block), 26¾ x 20½
 (sheet). [32026c] \$785.



40. *Birdman*. Etching. 1969. AP. Signed. Fern 520. 23½ x 17¼ (plate), 30¾ x 22 (sheet). [54097c] \$825.



42. *Romeyn De Hoogh*. Woodcut on green paper. 1968. Edition 31/50. Total edition of 100. From the 50 on green paper. Signed. Fern 507. 26¼ x 13⅞ (block), 30 x 19½ (sheet). [50667] \$475.



43. (LEFT): *Mummy*. Etching. 1967. Edition 17/100. Signed. Fern 509. 22¼ x 17½ (plate), 31½ x 22 (sheet). [45238c] \$1,100.



41. *Eakins (Thomas Eakins)*. Color woodcut. 1965. Edition 89/150. Signed. Fern 484. 32 x 23½ (image), 34 x 23¾ (sheet). Minor damage at edges, small margins. [45189c] \$1,200.

44. *Betrayal*. Woodcut. 1969. Edition 75/100. Signed. Fern 518. 32 x 21¾ (block), 35 x 24 (sheet). Hinge residue and minor damage at margin edges. [54110c] \$1,100.





45. Caspar David Friedrich. From *Laus Pictorum, Portraits of Nineteenth Century Artists*. Etching. 1969. Edition CXXXV / CLXXV. Signed. Published by The Gehenna Press, Northampton. Fern 540. 6 x 5 (plate), 14 x 11 (sheet). [43145c] \$225.



46. Euripides. From *The Hippolytos* by Euripides. Etching. 1969. Edition 27/90. Signed. Published by The Gehenna Press, Northampton. Fern 524. 11¾ x 7½ (plate), 18 x 12¾ (sheet). [54092c] \$350.



47. Gericault. Etching. 1969. Edition IV/ XV. Signed and numbered in pencil. Fern 535. 16¾ x 13¾ (plate), 30 x 22¼ (sheet). [25318c] \$1,500.



48. Masaccio. Etching. 1969. Edition 97/100. Signed. Fern 549. 17¾ x 17½ (plate), 29¾ x 22 (sheet). [47019c] \$850.



49. Gustave Courbet. From *Laus Pictorum, Portraits of Nineteenth Century Artists*. Wood engraving. 1969. Edition of 525. Signed. Published by The Gehenna Press, Northampton. Fern 539. 4½ x 4 (block), 14 x 11 (sheet). Small spot in lower margin. Hinge residue at upper corners, verso. [54080c] \$385.



50. Odilon Redon (French artist, 1840-1916).
From *Laus Pictorum, Portraits of Nineteenth Century Artists*. Etching. 1969. Edition XIV/XV. Signed, numbered and titled in pencil. Fern 547. $8\frac{3}{4} \times 5\frac{3}{4}$ (plate), $19\frac{3}{4} \times 15$ (sheet). [25296c] \$750.



51. Hosie's Bird. Color etching. 1970. Edition 47/100. Signed. Fern 565. $17\frac{1}{2} \times 17\frac{3}{4}$ (plate), $20\frac{1}{4} \times 24\frac{3}{4}$ (sheet). [54100c] \$775.



52. Rodolphe Bresdin. From *Laus Pictorum, Portraits of Nineteenth Century Artists*. Color etching. 1969. Edition CLXIV/CLXXV. Signed. Published by The Gehenna Press, Northampton. Fern 537. $8\frac{3}{4} \times 5\frac{7}{8}$ (plate), 14×11 (sheet). Faintly toned. [53874c] \$275.

54. J. de Gheyn (Jacob de Gheyn). Woodcut. c. 1970. Edition 39/50. Signed. Fern 562. $21\frac{5}{8} \times 13\frac{3}{4}$ (block), $29\frac{1}{2} \times 19\frac{3}{4}$ (sheet). Some skinning at center of sheet, verso. [54102c] \$800.



53. (LEFT): Thomas Eakins.
From *Laus Pictorum, Portraits of Nineteenth Century Artists*. Wood engraving. Date of impression 1969. Date of plate 1966. Signed. Fern 496. $2\frac{1}{4} \times 1\frac{1}{2}$ (image), 14×11 (sheet). [43143c] \$225.





55. Lavinia. From *Titus Andronicus* by William Shakespeare. Etching. Date of plate 1970. Edition 3/200. Signed in the plate and in pencil. Published by The Gehenna Press, Northampton. 12½ x 7¾ (plate), 20 x 13½ (sheet). [21782] \$325.



56. Thomas Eakins. Woodcut. 1970. AP. Signed. Dedicated "for Emma and Sid, 23 January 1963". 22½ x 13¾ (block), 29 x 20½ (sheet). Repairs at upper wide margin. [54101c] \$950.



57. Man with Red Hat (or Ahab). Color lithograph. 1970. Unnumbered edition. Signed and dated in the stone. Printed by Bank Street Atelier, NY. Published by For the Collector's Guild Ltd. 15¼ x 9½ (image), 18⅞ x 13½ (sheet). [53875c] \$385.



58. Man in Ram's Head (relief). Bronze. 1970. Signed. 28 x 17. [25332c] \$18,500.



59. Man in Ram's Head (Mythological Figure). Pen and ink on paper. 1971. Signed. 40 x 26½ (image), 40⅞ x 27½ (sheet). Mounted to backing sheet at margin edges. [25335c] \$9,000. Also available framed.



60. *Sitting Bull.* Commissioned by the U.S. National Parks Service. Lithograph. 1972. Edition 59/160. Signed. Fern 613. 29½ x 21½ (image), 34 x 24 (sheet). [29948] \$750.



61. *Leader.* Lithograph. 1971. Edition 3/160. Signed. 27¼ x 20 (image), 33¾ x 24 (sheet). [31327] \$750.



62. *Chief Wets It Assinnboine.* Commissioned by the U.S. National Parks Service. Lithograph. 1972. Edition of 160. Signed. Fern 609. 33¼ x 22 (image), 35 x 25 (sheet). [29852] \$900.



63. *Pedro Cajete, Pueblo.* Commissioned by the U.S. National Parks Service. Lithograph on BFK Rives. 1972. Edition 144/160. Signed. Fern 611. 30¾ x 22 (image), 35 x 25 (sheet). [30232] \$1,200.



64. *Sharp Nose, Arapaho.* Commissioned by the U.S. National Parks Service. Lithograph on BFK Rives. 1972. Edition 104/160. Signed. Fern 612. 32 x 20½ (image), 35 x 25 (sheet). [30234] \$900.



65. Chief American Horse, Ogalalla Sioux. Color lithograph. 1973. Edition 89/100. Signed and signed in the stone. Fern 619. 37 x 24 (image), 41½ x 29½ (sheet). Toned. [51825c] \$1,000.



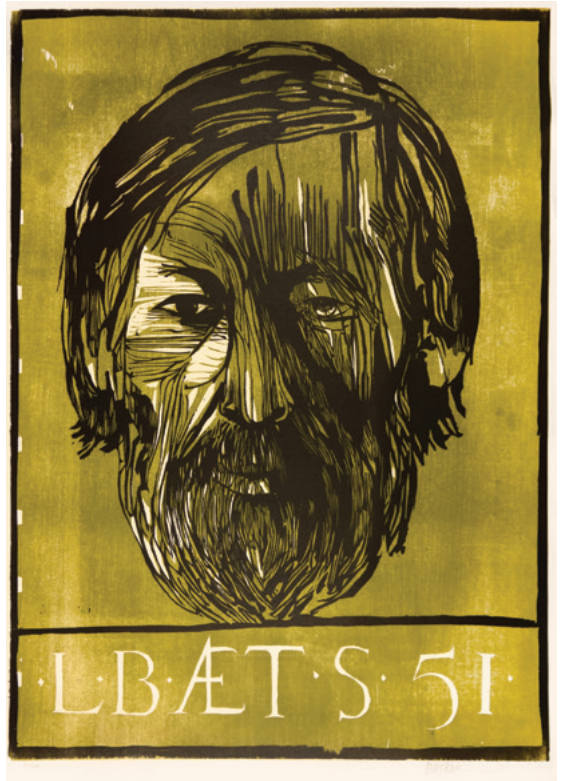
66. Crow Scout / White Man Runs Him. Lithograph. 1974. Signed and signed in the stone. Dedicated "for Nick". Fern 641. 34 x 24 (image), 41½ x 29¾ (sheet). [52742] \$1,000.



67. White Horse. Lithograph. 1972. Edition of 160. Signed and numbered in pencil. Fern 616. 32 x 20 (image), 35 x 25 (sheet). [30790] \$900.



68. Emilia. From Shakespeare's *Othello*. Woodcut on Japanese paper. 1973. AP. Signed. Published by The Gehenna Press, Northampton. Fern 627. 12½ x 6¾ (block), 19¾ x 13 (sheet). [21785] \$225.



69. Leonard Baskin at 51. Color woodcut. 1973. Edition of 100. Signed. Fern 618. 32 x 23¼ (image), 32 x 23⅞ (sheet). Some soiling at upper right margin. [29860] \$800.



70. Cave Bird. Etching on Velin d'Arches. 1978. Edition 73/125. Signed. Published by Horn Editions and Kennedy Graphics, New York. Fern 667. 29¼ x 20 (plate), 35⅝ x 23⅜ (sheet). [54099c] \$1,250.



71. Isaiah. From *Old Testament Series*. Lithograph. 1976. Edition 14/100. Signed. Fern 664. 41½ x 29¼ (image/sheet). [25301c] \$1,750.



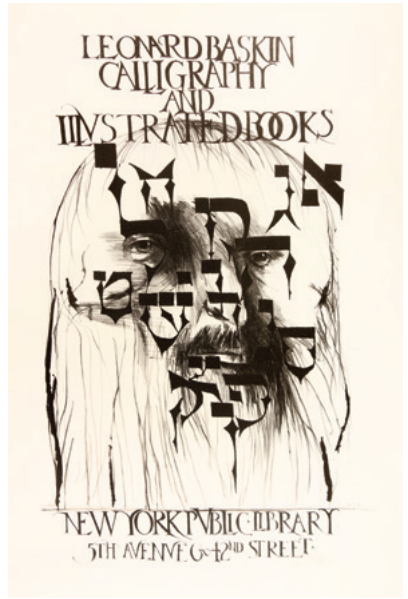
72. Determined Figure. Pen and ink drawing. 1977. Signed. 31 x 22 (image/sheet). [25340c] \$10,000.



73. Leonard Baskin at 56. Color woodcut. 1978/79. Edition of 150. Signed. 32 x 22 (image), 35¼ x 24 (sheet). [29859] \$800.



74. *Woman with Downcast Eyes*. Etching and aquatint on Velin d'Arches. 1978. AP (Regular edition of 125). Signed. Published by Horn Editions and Kennedy Graphics, New York. Fern 673. 23½ x 17¾ (plate), 30¾ x 22 (sheet). [54098c] \$1,200.



75. *New York Public Library Poster*. Lithograph. 1979. Signed. 29½ x 19 (image), 36 x 24 (sheet). [25535] \$600.



76. *Lisa*. Monotype. 1980. Edition 1/3. Signed. 22½ x 17¼ (image), 27 x 20½ (sheet). [25342c] \$3,500.



77. *Gluttony Death (without wings)*. Bronze sculpture. 1981. Signed in the base. 31 x 17 x 8. [25343c] \$35,000.



78. Angry and Shouting Man. Watercolor on paper. 1983. Signed. 22¼ x 15¼ (image/sheet). [25336c] \$4,500.



79. Deranged Flemish Artist. Watercolor on paper. 1984. Signed. 31 x 23 (image/sheet). [25337c] \$8,500.



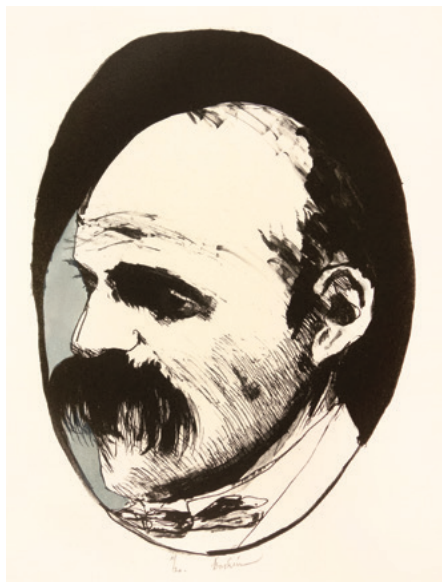
80. Sibyl VIII. Gouache on paper. 1989. Signed. 22 x 14¾ (image/sheet). [25549c] \$15,000.



81. Blue Barlach. From *Semblant Series*. Lithograph with hand-coloring. 1990. Edition 9/20. Signed. 10 x 9 (image), 13¼ x 11 (sheet). [25319c] \$815.



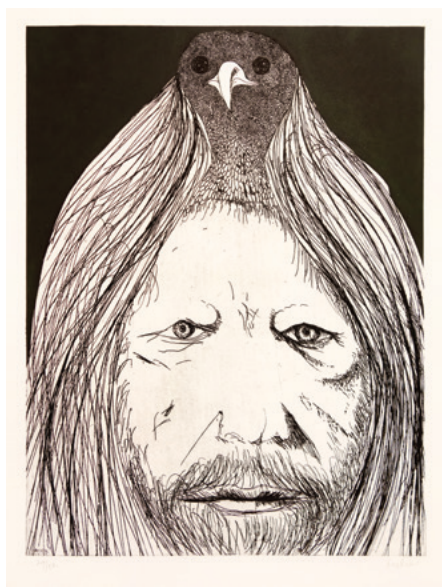
82. *Paula Modersohn-Becker*. From *Semblant Series*. Lithograph, chine-collé and hand-coloring. 1990. AP (Regular edition of 25). Signed. $13\frac{1}{2} \times 6$ (image), 17×12 (sheet). [25546c] \$550.



83. *Fattori in Oval*. From *Semblant Series*. Lithograph with chine-collé. 1990. Edition 11/20. Signed and numbered in pencil. $11\frac{1}{2} \times 8\frac{1}{2}$ (image), $14 \times 11\frac{7}{8}$ (sheet). [25279c] \$950.



84. *This Overstuffed Death Knows No Satiety*. Pen and ink drawing. 1990. Signed. 30×22 (image/sheet). [25338c] \$10,000.



85. *Self Portrait with Bird*. Etching on BFK Rives. c. 1990. Signed. $25\frac{1}{4} \times 19\frac{3}{8}$ (plate), $31\frac{1}{2} \times 25\frac{1}{4}$ (sheet). [54134] \$900.



86. *Mexico*. Color etching. 1995. Edition 20/30. Signed and numbered in pencil. $7\frac{7}{8} \times 7\frac{7}{8}$ (plate), $16\frac{3}{4} \times 14\frac{1}{2}$ (sheet). [25316c] \$2,200.



87. *Leonard Baskin at 72*. Gouache on paper. 1994. Signed. $30 \times 22\frac{1}{2}$ (image/sheet). [25339c] \$10,000.



88. *View of Worcester / View in Worcester*. Wood engraving. 1953. AP (Regular edition of 20). Signed. Fern 240. $9\frac{7}{8} \times 8\frac{1}{2}$ (image), 13×12 (sheet). Very faint mat burn. [47682c] \$1,020.



89. For the *Angel Series*. Etching and aquatint. 1992. Edition 10/30. $23\frac{3}{4} \times 17\frac{3}{4}$ (image), 30×22 (sheet). [25289c] \$2,200.



90. Oaxacan Sibyl. From *Mexico Series*. Etching. 1995. Edition 30/50. Signed. 19½ x 13¾ (plate), 26¼ x 22 (sheet). [25317c] \$2,000.



91. Sibyl (Red and Green). Woodcut. 1993. AP (Regular edition of 50). Signed in pencil. 7 x 6¼ (image), 12 x 9½ (sheet). [25545c] \$650.



93. Leonard Baskin at 76. Woodcut with lettering in red. 1999. Edition 9/50. Signed. 40 x 29 (image), 52 x 40 (sheet). [32015] \$1,600. Also available framed.



92. Vashti. Bronze sculpture. 1995. Signed in the base. 28 x 15 x 15. [25330c] \$25,000.



94. *His Face*. Illustration from *Sibyls: A Book of Poems* by Ruth Fainlight. Color woodcut. 1991. Edition III/XX. Signed. Published by The Gehenna Press. 16¾ x 10¼ (blocks), 19½ x 14 (sheet). Faintly light struck. [54095c] \$825.



95. *After Possession*. Illustration from *Sibyls: A Book of Poems* by Ruth Fainlight. Color woodcut. 1991. Edition III/XX. Published by The Gehenna Press. Signed. 17¼ x 11 (blocks), 20 x 14½ (sheet). Very faintly light struck. [54096c] \$725.

LEONARD BASKIN: Selections from a Powerful Legacy—Winter 2022

CONTACT: Rebecca McDonald, (206) 624-7684
or rebecca@davidsonalleries.com

An additional impression may be available for certain works. Listed prices apply to the impression shown. Prices may vary for additional impressions. All items are guaranteed as described. Certificate of authenticity is available upon request. Please contact the gallery with questions or to discuss a work in detail. **All dimensions are given in inches, height precedes width.** Orders will ship at the conclusion of the exhibition. Works are normally shipped insured via UPS unless other arrangements are specified. Shipping charges vary and are dependent on size and value of items ordered. Washington State residents must add appropriate sales tax. Works may be returned to the gallery for any reason within two weeks of purchase for a refund less shipping and associated restocking fees. Returned works should be securely packed and fully insured.

Please inform the gallery of any special collecting interests. Davidson Galleries is willing to consider purchasing or consigning fine original prints individually or as collections.

Davidson Galleries is a charter member of the **International Fine Print Dealers Association** and is committed to its strict ethical standards.

IFPDA MEMBER

DOWNLOADABLE CATALOGS AVAILABLE

As part of our commitment to produce less waste, we are proud to offer our catalogs as downloadable PDFs through **davidsonalleries.com**. Visit the publications page on the website to download free of charge.

If you would prefer to continue receiving our semi-annual printed catalogs by mail, **annual subscriptions are available for \$12**, deductible from your first catalog purchase. Please contact the gallery for details.



Join our bi-monthly
email newsletter!

DAVIDSON GALLERIES

313 Occidental Avenue South | Seattle, Washington 98104
www.davidsongalleries.com | Open Tuesday-Saturday 11-5:30

CHANGE SERVICE REQUESTED

LEONARD BASKIN: Selections from a Powerful Legacy
Winter 2022



96. *The Funeral*. For Flaubert's *St. Julien's The Hospitalier*. Wood engraving. 1957. Signed. Fern 305.2 x 9¼ (image), 10 x 16¼ (sheet). [45224c] \$750.

\$6.00