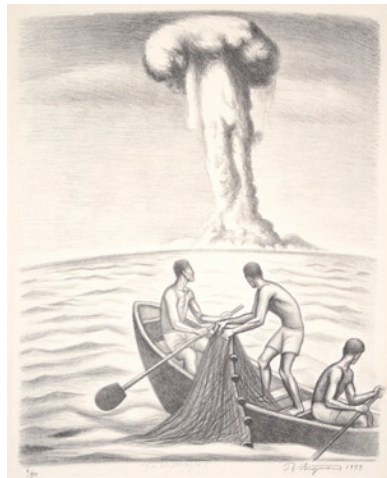


1-C. IAN BOYDEN (American, b. 1971) *Landscape Cross Section with Meteoric Iron, No. 8*. Muonionalusta meteorite, cinnabar, and carbon on paper, 2010. Signed. 31 x 22-1/2 in. \$1400. framed

ORIGINAL ANTIQUE, MODERN & CONTEMPORARY WORKS
DAVIDSON GALLERIES



2-A. JAMES E. ALLEN (American, 1894-1964)
Teaming Ingots. Etching, 1935. Signed. Edition 100.
Ryan 88. 11-3/4 x 9-3/4 in. [30736c] \$1800.



4-A. RAUL ANGUIANO (Mexican, 1915-2006)
La Amenaza (The Menace).
Lithograph, 1959. Signed. Edition 6/50.
21-1/2 x 17-1/4 in. [30612c] \$800.



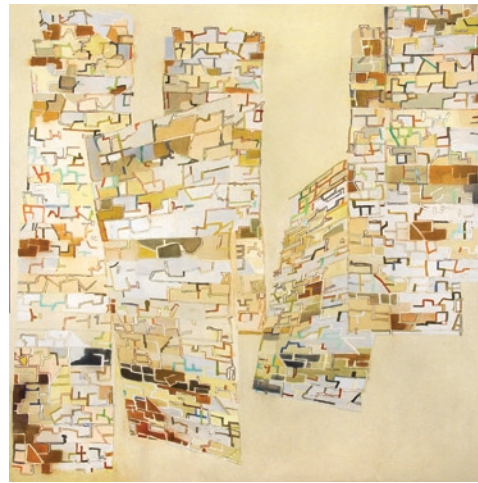
3-A. ROMARE BEARDEN (American, 1911-1988)
Firebirds. Color lithograph, 1979. Signed.
Edition 154/300. Very faint trace of toning.
22 x 15 in. [30569c] \$2800.



5-A. RAUL ANGUIANO (Mexican, 1915-2006)
La Cuidad de los Palacios (The City of the Palaces). Lithograph, 1953. Signed.
Edition 34/30. 22 x 17-1/4 in. [30611c] \$850.



6-C. M.J. ANDERSON (American, b. 1953)
Incinta Rosso. Moroccan marble, 2006.
Signed. 11 x 9 x 8 in. \$2600.



7-C. LISA BUCHANAN (American, b.1951)
Pieces of Wall. Oil on canvas, 2010. Signed.
48 x 48 in. \$5500.



8-C. MARLENE BAUER (American, b.1950)
Prescott. Acrylic on paper, 2009.
Signed. 11 x 15 in. \$1200. framed



9-C. MICHAEL BARNES (American, b. 1969)
Approaching the Summit. Lithograph, 2010.
Signed. Edition 33. 15 x 12 in. \$500.



10-C. JUAN ALCAZAR MENDEZ (Mexican, b. 1955)
Con Olor a Camaron.
Aquatint, 1996. Signed. Edition 19/50.
20-3/4 x 16-3/4 in. \$600.



11-A. LEONARD BASKIN (American, 1922-2000)
Angel of Death. Woodcut, 1959. Signed. Proof. Fern 369. Some minor discoloration in margins, especially along sheet edges. 61 x 38-1/2 in. [30650c] \$3200.



13-C. PETER BRAUNINGER (Swiss, b. 1948)
The Night Watch. Etching and aquatint, 1988. Signed. Edition 20. 9-3/4 x 12-1/2 in. \$360.



12-A. LEONARD BASKIN (American, 1922-2000)
Oedipus at Colonus. Etching, 1970. Signed. Edition 19/100. Fern 553. Stains from previous hinge at top margin, away from image. 23-1/2 x 17-1/2 in. [30652c] \$600.



14-C. FRANK BOYDEN (American, b. 1942)
Lens with Owl. Etching and drypoint, 2002. Signed. Edition 15. 7-3/4 x 6-5/8 in. \$650.



15-A. LEONARD BASKIN (American, 1922-2000)
Torment. Woodcut, 1959. Signed. Proof. Fern 368. Some faint toning. 40 x 23 in. [30651c] \$950.



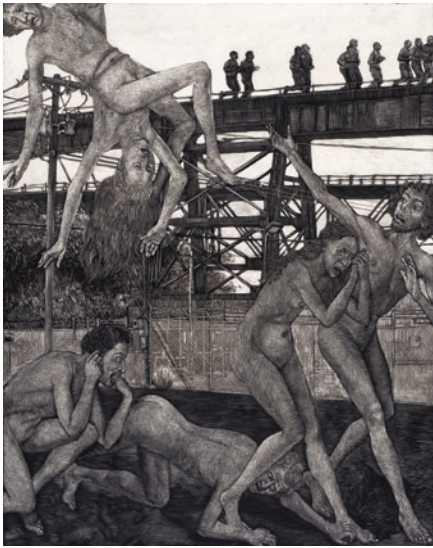
16-C. IAN BOYDEN (American, b. 1971)
Feather Shed from a Meteor, No. 10. Muonionalusta meteorite, lapis lazuli, and carbon on paper, 2010. Signed. 47-1/2 x 31-1/2 in. \$2800. framed



17-A. CORNELIS BEGA (Dutch, 1620-1664)
The Mother. Etching. Hollstein 28. Trimmed just within plate mark. 3-7/8 x 3-1/8 in. [28608c] \$425.



18-A. PIETER VAN DER BORCHT (Dutch, 1545-1608) *The Laundry*. Engraving, c. 1562. Series: *Playing Monkeys*, after Pieter Brughel the Elder. Hollstein 469-472. Trimmed. Inscription panel at bottom of plate cropped off. Small spot bottom center. 8 x 11 in. [30692c] \$2800.



19-C. ALICE LEORA BRIGGS (American, b. 1953) *Exodus*. Sgraffito drawing on panel, 2008. Signed. 21 x 17 in. \$2650.



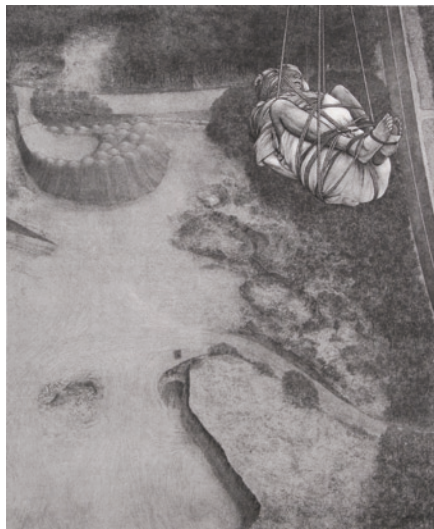
20-C. ALICE LEORA BRIGGS (American, b. 1953) *Spit*. Sgraffito drawing on panel, 2007. Signed. 25 x 29 in. \$3800.



22-C. DAVID BECKER (American, b. 1937) *In a Dark Time*. Erching and roulette, 1973. Signed. Edition 87/100. 15-3/4 x 23-3/4 in. [30624c] \$750.



21-A. after GEORGES BRAQUE (French, 1882-1963) *Biennial of Menton*. Color lithograph after the painting. Poster before letters. Published for 5th Menton Painting Biennial. Printed by Maeght. Edition 201/300. 16-1/2 x 12-1/2 in. [30579c] \$950.



23-C. DAVID BECKER (American, b. 1937) *Last Day*. Etching. Signed. Edition 21/139. 23-3/4 x 19-1/2 in. [30625c] \$550.



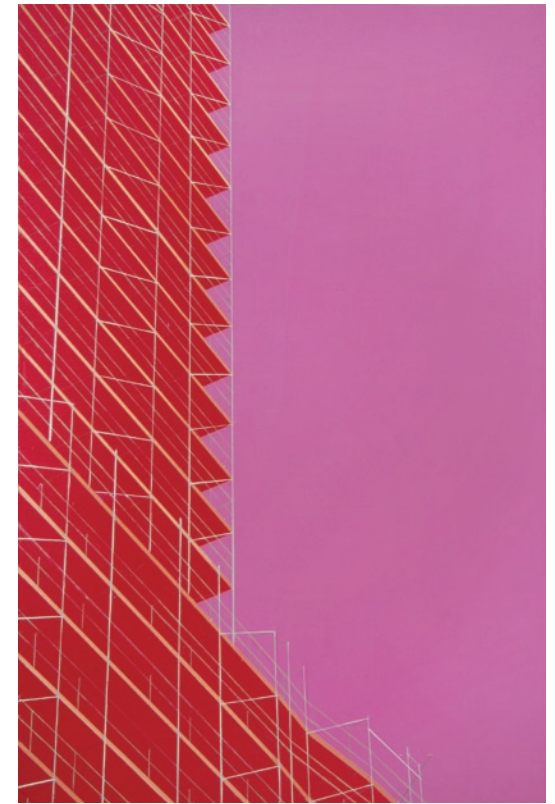
24-C. KONSTATIN CHMUTIN (Russian, b. 1953) *Special Arrangement*. Mezzotint, 1998. Signed. Edition 291/300. 4-1/4 x 3 in. \$220.



25-C. DANIEL CARRILLO (Mexican/American, b. 1971) *Self Portrait #2*. Mezzotint, 2007. Signed. 9 x 6 in. AP. \$180.



27-A. BERNARD BRUSSEL-SMITH (American, 1914-1989) *Sourwood Mountain*. Wood engraving, 1945. Signed. Edition 110. 4-7/8 x 3-3/4 in. [30746c] \$325.



26-C. TRAM BUI (American, b. 1972) *3rd Ave.* Oil on panel, 2010. Signed. 36 x 24 in. \$1600.



28-A. BERNARD BRUSSEL-SMITH (American, 1914-1989) *Erie Canal*. Wood engraving. Published by Tom Scott for *Sing of America* series, 1947. Signed in pencil and in the block. 3-1/2 x 5-5/8 in. [30745c] \$1800.



29-35-A. GEORGE ELBERT BURR
(American, 1859-1939)

29-A. *Arizona Clouds* [no. 2].
Mezzotint. First title in *The Desert Set*, 1921. Signed. Monogram in the plate. Edition 37/40. Seeber 184. (S. 184 is a reworked version of the color mezzotint *Arizona Clouds* [no. 1], S. 68. This is Burr's only mezzotint plate.) 7 x 9-7/8 in. [30672c] \$2500.



30-A. *Cloud Shadows, Apache Trail, Arizona*.
Drypoint. Signed. Monogram in the plate.
Seeber 268. 8 x 10 in. [30668c] \$1200.



32-A. *Canyon Rim, Arizona*. Drypoint.
Signed. Monogram in the plate. Seeber 275.
10 x 7-7/8 in. [30670c] \$1200.



31-A. *Verde River, Apache Indian Reservation Arizona*.
Etching and drypoint. Signed. Monogram in plate.
Seeber 322. 7-13/16 x 9-7/8 in. [30671c] \$1500.



33-A. *Desert Twilight*. Etching in blue.
Signed. Monogram in the plate. Seeber 318.
Very faint trace of toning. 4-3/4 x 6-3/4 in.
[30667c] \$950.

34-A. *New Moon and Morning Star, Phoenix Arizona*. Etching and drypoint. Signed. Monogram in the plate. Seeber 329. 9-3/4 x 7-3/4 in. [30669c] \$2750.



35-A. *Edge of the Desert, Arizona*. Etching and drypoint, 1926. Signed. Monogram in the plate. Seeber 284. 9-7/8 x 11-15/16 in. [30674c] \$3000.



36-C. LESLIE CAIN (American, b. 1953)
Couse Creek, Study. Pastel on paper, 2010. Signed.
25-1/2 x 22-1/2 in. \$1800.



38-A. MARY CASSATT (American, active in France, 1845-1926). *Sara Smiling*. Drypoint with color printed à la poupée, c. 1904. Later impression. Breeskin 195. 9 x 6 in. [30598c] \$1800.



37-A. GERARDO CANTÚ (Mexican, b. 1934)
Piggy Back Ride. Mixed media intaglio and relief, 1970. Signed. Edition 2/20.
19-1/2 x 15-3/4 in. [30507c] \$875.



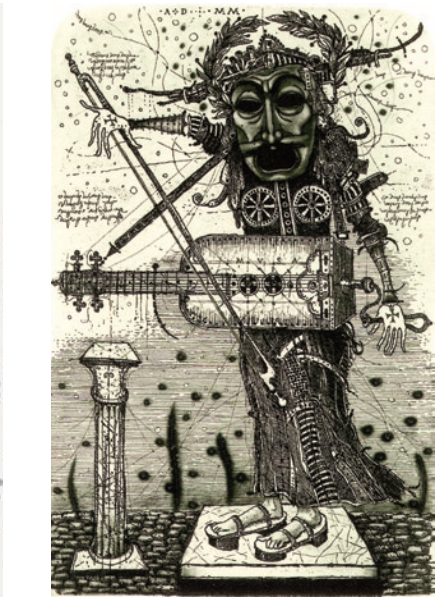
39-A. MARY CASSATT (American, active in France, 1845-1926). *The Manicure*. Drypoint on laid paper, c. 1908. Later impression. Reference: Breeskin 199, second state. A few spots of foxing. 8 x 5-1/2 in. [30585c] \$1600.



40-C. ELAINE COOMBS (Canadian, b. 1973)
In the Moment 3. Acrylic on paper, 2010.
30 x 22 in. \$1000.



42-C. ROBERT CONNELL (American, b. 1947)
Lake View. Sumi ink and gouache on paper, 2010. Signed. 22 x 30 in. \$750.



43-C. OLEG DENISENKO (Ukrainian, b. 1961) *Musa*. Etching and engraving, 2000. Signed. Edition 50.
6 x 4 in. \$200.



41-C. GARY CURTIS (American, b. 1947)
Partial Head 1. Glass, 2008.
6 x 7 x 9 in. \$4000.

44-A. CHARLES-FRANCOIS DAUBIGNY (French, 1817-1878) *La Machine Hydraulique*. Original cliché-verre, 1862. From the edition of 150 published in 1921. Edition 147/150 in pencil verso. Delteil 147. 8-1/4 x 13-1/2 in. [29186c] \$350.

45-48-A. **JIM DINE** (American, b. 1935) Lithographs for Oscar Wilde's *Portrait of Dorian Grey* Suite. Color lithographs, 1968. Edition A 193/200. Published by Petersburg Press, London. Signed. Sheet: 17-1/2 x 12-1/4 in. each.



45-A. *Multicolor Dress*. Mylar overlay. Toned. [30731c] \$400.



46-A. *Basil in Black Leather Suit*. [30728c] \$350.



47-A. *Multi Rainbow Scarf*. [30729c] \$450.



48-A. *Red Piano*. [30728c] \$550.



49-C. **WILLIAM E. ELSTON** (American, b. 1949) *Across the Pond*. Oil on canvas, 2010. Signed. 39 x 20 in. \$3600.



50-C. **LOCKWOOD DENNIS** (American, b. 1937) *Bridge 2*. Oil on canvas, 2010. Signed. 20 x 16 in. \$550.



51-C. **SHARON DOWELL** (American, b. 1980) *Interim, Reykjavik*. Acrylic and ink on canvas, 2010. Signed. 40 x 60 in. \$3500.



52-A. ANTHONY VAN DYCK (Dutch, 1599-1641)
Le Christ au Roseau (Christ with the Reed).
Etching terminated with engraving, c. 1632.
Hollstein 20, Mauquoy-Hendrikx A, Wibrial/
Weber A, 5th state of 5. Rich, dark impression.
Two collectors stamps, top left front and verso.
Provenance: J. Rosenberg (Lugt 1519 and 1522).
9-5/8 x 8-3/8 in. Text panel cropped (length with
panels should be 10-1/4 in.) Trimmed just to or
within plate mark, top and sides. [30695c] \$800.



53-C. TALLMADGE DOYLE (American, b. 1956)
The Raven. Etching, aquatint, chine colle, hand color,
2010. Signed. Edition 25. 14-1/2 x 11 in. \$400.



54-A. MARY E. FIFE LANING
(American, 1898-1990) *Lovers (or The Stoop)*.
Lithograph, 1936. Signed. Edition 30.
12-7/8 x 9-5/8 in. [30737c] \$775.



55-C. SIEMEN DIJKSTRA (Dutch, b. 1968) *Over Elyzees Veldon*. Reduction woodcut, 2009.
Signed. Edition 31/42. 7-7/8 x 23-1/8 in. \$500.



56-C. DONALD FELS (American, b. 1946)
A Life. Mixed media on paper, 2010.
Variable edition 30. Signed. 11-1/2 x 8 in. \$400.



58-C. TONY FITZPATRICK
(American, b. 1958) *Summer Bug*.
Etching and aquatint, 1997. Signed.
Edition 15/40. 3 x 2 in. \$450.



60-C. JEAN GUMPPER (American, b. 1955)
Surface Tension. Woodcut and pochoir, 2010.
Signed. Edition 35. 21 x 15 in. \$750.



59-C. KEVIN FLETCHER (American, b. 1956)
Leaving Wittenberg by Afternoon Train.
Monotype, 2009. Signed. 9-1/4 x 11-3/4 in. \$350.



57-C. DORY GOODE (American, b. 1969)
Homage #14. Egg tempera and ink on panel, 2008.
Signed. 12 x 12 in. \$650.



61-C. MARY FARRELL (American, b. 1950)
Split Open. Mezzotint, 2008. Signed.
Edition 40. 7 x 6-1/2 in. \$275.



62-C. STEPHANIE FROSTAD (American, b. 1965) *Prodigal Son: The Chute*. Oil on paper, 2008. Signed. 14 x 11 in. \$1250.



63-C. DAN GUALDONI (American, b. 1943) *Coastal Redux 63*. Mixed media on panel, 2010. Signed. 21 x 19-7/8 in. \$2900.



64-A. JOHNNY FRIEDLAENDER (French, born in Prussia, 1912-1992) *Couple VI*. Etching and aquatint, 1949/50. Original edition 100, this impression is vi/xx from the edition published by Touchstone, NY in 1967. Schmücking 56. 12-3/8 x 9-1/4 in. [30580c] \$825.



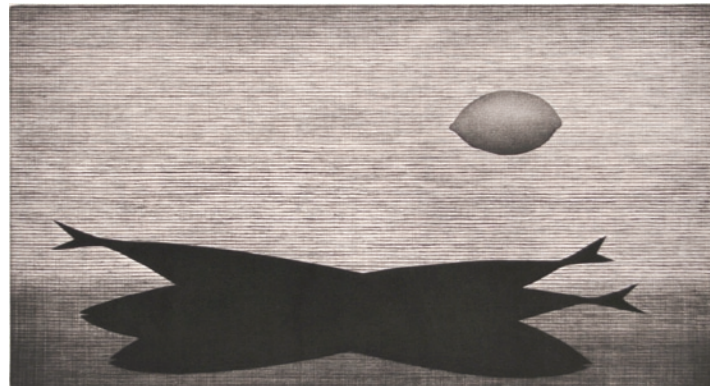
65-A. DAVID HOCKNEY (British, b. 1937) *In Despair*. Etching, 1966. Illustration for *Thirteen Poems from C. P. Cavafy*. Signed. Edition 48/75. Published by Editions Alecto (#372). 13-1/2 x 8-3/4 in. [30747c] \$1500.



66-A. FRANCISCO JOSÉ DE GOYA Y LUCIENTES (Spanish, 1746-1828) *Lucientes Murió la Verdad* (Truth has died). Etching. Plate 79 from *Los Desastres de la Guerra*, c. 1810-1820. Harris 199 III 1. First Edition. Made in the workshop of Laurenciano Potencio for the Real Academia, 1863. 6-7/8 x 8-5/8 in. [30604c] \$1600.



68-A. FRANCISCO JOSÉ DE GOYA Y LUCIENTES (Spanish, 1746-1828) *Si Reucitará?* (Will she rise again?) Etching. Plate 80 from *Los Desastres de la Guerra*, c. 1810-1820. Harris 200 III 1. First Edition. Made in the workshop of Laurenciano Potencio for the Real Academia, 1863. 6-1/2 x 8-1/4 in. [30605c] \$1350.



70-A. YOZO HAMAGUCHI (Japanese, active in France, 1909-2000) *Poissons et Citron*. Mezzotint, 1958. Signed. Edition h.c. (regular edition 50). 10-1/2 x 19-1/4 in. [30710c] \$3600.



67-A. FRANCISCO JOSÉ DE GOYA Y LUCIENTES (Spanish, 1746-1828) *Ni Por Esas* (Neither do these). Etching, lavis, drypoint and burin. Plate 11 from *Los Desastres de la Guerra*, c. 1810-1820 (first published in 1863). Harris 131 III 6 (of 7). Good impression with previous tape in outer margins verso, well away from image. 6-3/8 x 8-3/8 in. [30626c] \$750.



69-A. JEAN LOUIS-ANDRÉ THEODORE GERICAULT (French, 1791-1824) *Un Roulier Montant un cote dans la Neige*. Lithograph, 1823. from *Quatre Sujet Divers*. Deteil 76 ii/v. Good impression with a few spots, lines and other minor damages. 8-7/8 x 12 in. [30738c] \$1200.



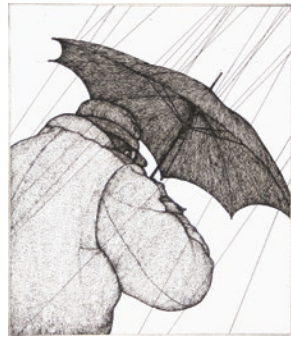
71-A. ROBERT OVERMAN HODGELL (American, 1922-2000) *Daniel Among the Lions*.
Linocut, c. 1960. Signed. 20 x 24 in. [28429c] \$450.



74-C. ART HANSEN (American, b. 1929) *Four Poppies*. Hand colored etching, 1987.
Signed. Edition 100. 10-3/4 x 7-3/4 in. \$400.



72-A. ROBERT OVERMAN HODGELL (American, 1922-2000) *The Prodigal Son*.
Linocut, 1960. Signed. 18-1/2 x 27 in. [28434c] \$500.
An impression of this print appeared in the 2007 exhibition *The Art of Forgiveness: Images of the Prodigal Son* at the Museum of Biblical Art, NY.



75-C. ART HANSEN (American, b. 1929) *Rain*. Etching, 1978. Signed.
Edition 51/100. 8 x 6-3/4 in. \$200.



73-C. SIDNEY HURWITZ (American, b. 1932) *Duisberg/Thyssen Twin Tanks*. Etching with watercolor.
Signed. Edition 15. 15-3/4 x 19-3/4 in. \$800.



76-C. WUON GEAN HO (British, b. 1973) *Lucid Streets*. Etching, 2010.
Signed. AP. 16 x 11-3/4 in. \$475.



77-C. ELLEN HECK (American, b. 1983) *Elizabeth on Her Laptop*. Woodcut,
drypoint and aquatint, 2009. Signed.
Variable edition 9. 18 x 12 in. \$600.



78-A. BETH VAN HOESEN (American, b. 1926) *Checked Shirt*.
Mixed intaglio. Signed. Edition 1/25.
Faint spotting in top margin.
9-3/8 x 7-3/8 in. [30740c] \$500.



79-A. BERTHA E. JAUQUES (American, 1863-1941) *Tower Bridge, London*. Etching, c. 1913. Signed.
5-7/8 x 8-7/8 in. [30620c] \$200.



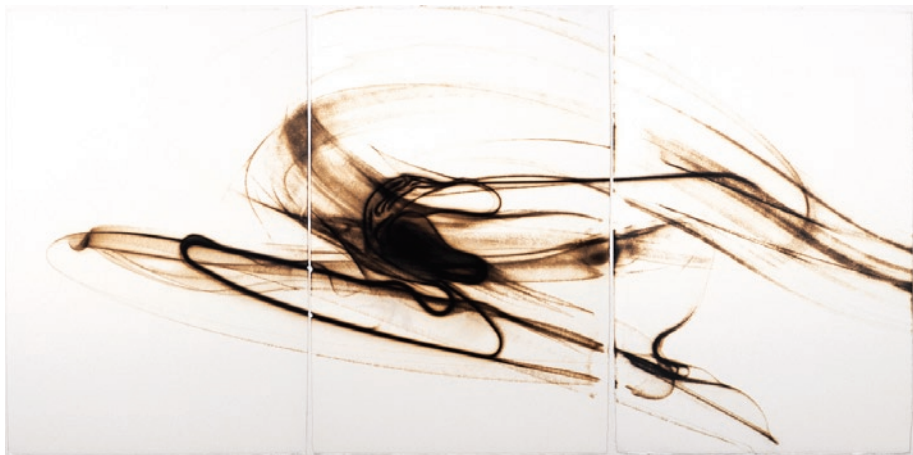
80-A. WINSLOW HOMER (American, 1836-1910) *The Army of the Potomac - A Sharp-Shooter on Picket Duty*.
Wood engraving after Winslow Homer drawing.
As published in *Harper's Weekly*, November 15, 1862.
Beam 99 9-1/8 x 13-3/4 in. [30277c] \$750.



81-A. HORST JANSSEN (German, 1929-1995) *Vor Holm*.
Etching and aquatint on Japan, 1972. Signed.
5-7/8 x 8-3/4 in. [30538c] \$300.



82-A. HORST JANSSEN (German, 1929-1995) *Langenhorn, H2"2"*. Etching, 1964.
Cat. # 293. 15-3/4 x 19 in. [30539c] \$650.



83-C. ETSUKO ICHIKAWA (Japanese/American, b. 1963) *Trace 6510*. Glass pyrograph on paper, 2010. Triptych. Signed. 22 x 45 in. \$2400.



84-C. JONELLE JOHNSON (American, b. 1945) *Circler and Crows*. Etching, monotype, and collage, 2009. Signed. 12 x 23-3/4 in. \$600.



85-C. MARY IVERSON (American, b. 1966) *Yosemite Valley*. Oil on canvas, 2010. Signed. 30 x 48 in. \$3800.



86-A. YNEZ JOHNSON (American, b. 1920) *The Cosmic Mountain*. Color etching, 1981. Signed. 18 x 11-3/4 in. [30578c] \$950.



89-C. PHILIP KOCH (American, b. 1948) *White Light*. Oil on panel, 2010. Signed. 12 x 24 in. \$3800.



87-C. KONSTANTIN KALYNOVYCH (Ukrainian, b. 1959) *Februarius (Ex Libris)*. Etching. Signed. EA. 3-3/4 x 3-3/4 in. \$150.



88-C. KONSTANTIN KALYNOVYCH (Ukrainian, b. 1959) *Junius (Ex Libris)*. Etching. Signed. EA. 3-3/4 x 3-3/4 in. \$150.



90-A. ROCKWELL KENT (American, 1882-1971)
Geneological Tree. Lithograph on zinc, 1931. Signed.
Edition 150. Burne-Jones 71. 12-3/4 x 10 in.
[30744c] \$950.



91-A. ROCKWELL KENT (American, 1882-1971)
And Now Where? Lithograph, 1936.
Edition 200. Published by American
Artists Group. Burne-Jones 110.
Soft crease, lower right side.
13-1/8 x 9-3/8 in. [30741c] \$400.

92-C. EUNICE KIM (American, b. 1971)
Tessellation (8) #8.
Collagraph monoprint, 2009.
Signed. 8 x 4 in. \$250.



94-C. PETER KLUCIK (Slovakian, b.
1953) *Untitled*. Etching, 2008. Signed.
EA. 11-3/4 x 7-3/4 in. [35389] \$250.



93-A. GENE KLOSS (American, 1903-1996) *Jester's Fun*.
Etching, 1984. Signed. Edition 5/75.
7-1/2 x 8-7/8 in. [30734c] \$750.



95-A. KATHE KOLLWITZ (German, 1867-1945) *Sturm* (Riot).
Etching, between 1893 and 1897.
Later edition with von der Becke blindstamp.
Klipstein 33 v/v. 9-1/2 x 11-3/4 in.
[30595] \$500.



97-A. KATHE KOLLWITZ (German, 1867-1945)
Hamburger Kniepe (Tavern in Hamburg).
Soft ground etching, 1901. Klipstein 58.
Final state (after 1943). Von der Becke
blindstamp. 7-5/8 x 9-1/2 in. [29185c] \$385.



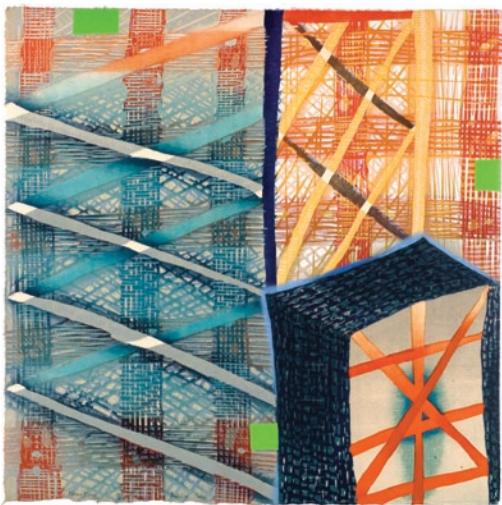
99-C. ROBERT KIPNISS (American, b. 1931)
A Private Porch. Mezzotint, 1997. Signed.
Edition 50. 7-7/8 x 6-7/8 in. \$750.



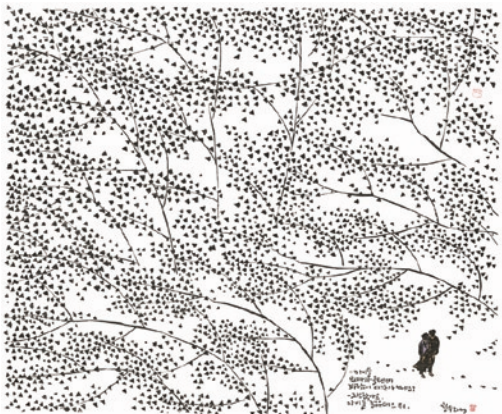
96-A. KATHE KOLLWITZ (German, 1867-1945)
Betendes Mädchen (Girl in Prayer). Etching, 1892.
Signed. Klipstein 11, iia. 7-1/2 x 5-3/4 in.
[30586c] \$3600.



98-A. KATHE KOLLWITZ (German, 1867-1945)
Vier Männer in der Kniepe (Four Men in a Tavern).
Etching, 1892-93. Signed. Klipstein 12, Knesebeck 15.
4-3/4 x 6 in. [30583c] \$1750.



100-C. KAREN KUNC (American, b. 1952) *Building Code*. Woodcut, 2008. Signed. Edition 16. 18 x 18 in. \$1000.



101-C. LEE CHUL SOO (Korean, b. 1952) *Don't Worry*. Woodcut, 2009. Signed. Edition 35. 24 x 28-1/2 in. \$950.



102-C. MARTIN LANGFORD (British, b. 1970) *Consumer*. Etching and aquatint. Signed. Edition 100. 13 x 19-1/2 in. \$360.



103-A. TSUKIOKA KOGYO (Japanese, 1869-1927) *Noh Theatre Masks*. Color woodblock, 1902. Published by Matsuki Heikichi. Oban (9-3/4 x 14 in.) [30698c] \$450.



104-A. AKIRA KUROSAKI (Japanese, b. 1937) *Darkness W-97*. Color woodblock, 1970. Signed. Edition 1/50. Some faint discoloration along sheet edge in bottom margin, not affecting image. 15-3/4 x 15-3/4 in. [30646c] \$350.

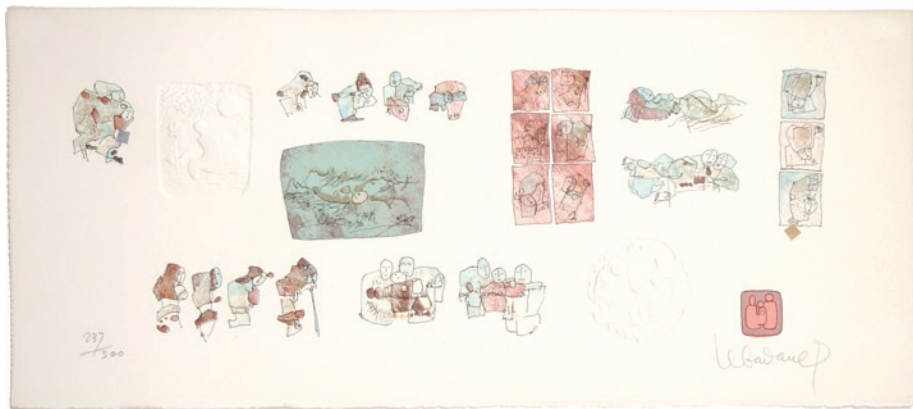


105-C. MARTIN LANGFORD (British, b. 1970) *Shadow*. Etching and aquatint. Signed. Edition 100. 9 x 6-1/4 in. \$135.

106-A. ROY LICHTENSTEIN (American, 1923-1997) *The Solomon R. Guggenheim Museum Poster*. Serigraph, 1969. Signed and annotated by the artist. Edition 3000/5000. Published by Poster Originals LTD., #81. Cockled, stains, and other minor damages. Sheet: 29 x 29 in. [30623c] \$1200.



107-C. EMILY LEONARD (American, b. 1976) *The Ground Remembered Her*. Oil on panel, 2010. Signed. 24 x 32 in. \$3500.



108-A. LE BA DANG (Vietnamese, b. 1922) *Personage*. Color litho and embossing with foil stamp. Signed. 237/300. Some slight fading. 7-1/2 x 20 in. [30568c] \$350.



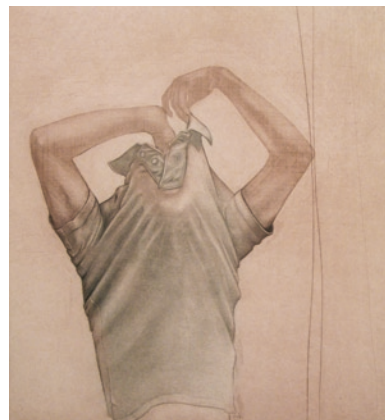
109-A. CLARE LEIGHTON (English/American, 1898-1989) *Ploughing*. Wood engraving, 1933. November for *The Farmer's Year*. Signed. Edition 73/100. Boston Public Library Cat. #220. 7-1/2 x 8-7/8 in. [30233c] \$1200.



110-C. MARTIN LEVINE (American, b. 1945) *The Guardians*. Color etching, 2005. AP. 8-1/2 x 5-1/2 in. \$450.



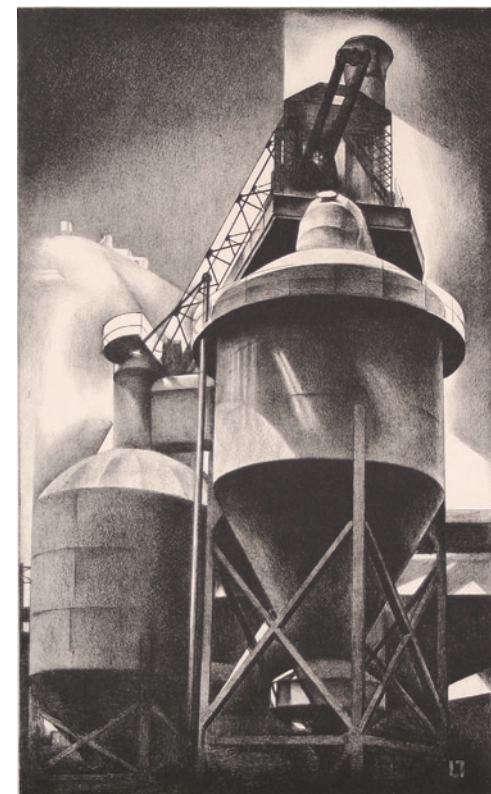
111-A. CLARE LEIGHTON (English/American, 1898-1989) *Clam Diggers - Cape Cod*. Wood engraving, 1946. Signed. Edition 27/250. Issued by *The Woodcut Society*, Alexandria. Boston Public Library Cat. #599, APLC 5. 6-7/8 x 7-13/16 in. [30697] \$850.



112-C. CARRIE LINGSCHUIT (American, b. 1984) *Momento No. 13914 (yield)*. Intaglio, 2010. Signed. Edition 20. 10 x 9 in. \$325.



113-C. CARRIE LINGSCHUIT (American, b. 1984) *Momento No. 2368 (guise)*. Intaglio, 2010. Signed. Edition 20. 12 x 16 in. \$350.



114-A. LOUIS LOZOWICK (American, b. Ukraine, 1892-1973) *Tanks #2 (Steel Plant)*. Lithograph, 1929. Edition 50. Signed. Flint 40. 14-5/8 x 9 in. [30618c] \$5000.



115-A. LOUIS LOZOWICK (American, b. Ukraine, 1892-1973) *Dead End*. Lithograph, 1941. Edition 10/20. Signed. Flint 189. 7-9/16 x 14-7/16 in. [30617c] \$3500.



116-C. JANET LOWRY (Canadian, b. 1938)
Dance. Etching and aquatint, 2000.
Signed. Edition 5. 36 x 24 in. \$1000.



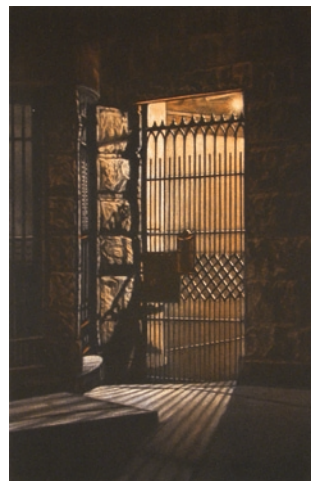
117-A. ARISTIDE MAILLOL (French, 1861-1944)
Untitled (Standing nude, arms raised).
Page 77 from *L'Art d'Aimer* by Ovid. Lithograph in sanguine, 1935. Regular ed. 225, one of 50 proofs in sanguine. Monogram in the stone. Papier de Montval. Printer: Edmond Desjobert. Publisher: Phillipe Gonin, Lausanne. Guérin 314. Sheet: 15-1/8 x 11-1/8 in. [30603c] \$1600.



118-A. LEOPOLDO MÉNDEZ (Mexican, 1903-1969)
Con una Piedra se Matan Muchos Pájaros... Nalgones. Linocut in page of text, 1940. Published by Taller de Gráfica Popular. Printed area: 12-1/2 x 7-3/8 in. [30707c] \$375.



119-A. LEOPOLDO MÉNDEZ (Mexican, 1903-1969)
Maestro Tu Estas Solo Contra. Broadside. Linocut in page of text, 1938. 13-1/4 x 9-1/8 in. [30613c] \$375.



120-C. FREDERICK MERSHIMER (American, b. 1958)
Garden Gate. Mezzotint, 2004. Signed. Edition 120. 6-1/2 x 4-1/4 in. \$250.



122-A. GERHARD MARCKS (German, 1889-1981)
Ho Trinkende Tauben. Woodcut, 1966. Signed. Edition 42/50. Scheck 324. Some toning. 9-7/8 x 13-7/8 in. [30567c] \$625.



123-C. MARK MEYER (American, b. 1947)
Sardonius. Digital pigment print, 2009. Signed. Edition 10. 8 x 8 in. \$250.



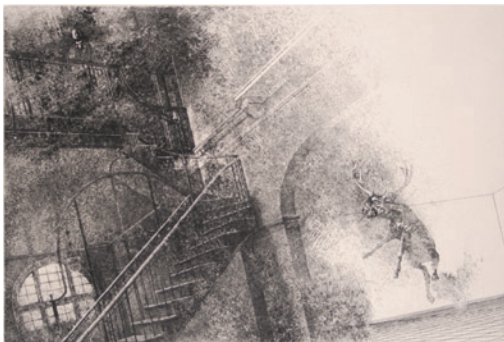
121-C. ROBERT E. MARX (American, b. 1925)
Keepsake. Oil on linen, 2005. Signed. 30 x 24 in. \$5200.



124-A. JOAN MIRÓ (Spanish, 1893-1983)
For *Miró Lithographe I*. Color lithograph on Arches. One of 11 lithographs issued in *Miró Lithographe I*, 1972. Artist's proof. Regular edition 150 on Rives, 80 on Arches. Maeght 861. Very faint toning where not covered by previous mat. 12-1/2 x 10 in. [30577c] \$2800.



125-C. PETER MILTON (American, b. 1930) *The Green Room*.
Digital print, 2010. Signed. Edition 90. 23 x 37 in. \$2800.



126-C. PETER MILTON (American, b. 1930)
The Jolly Corner II:3. Etching and engraving, 1971. Signed.
Edition 4/90. Johnson and Milton 71. 10 x 15 in. \$550.



128-C. GORDON MORTENSEN
(American, b. 1938)
Frick Park.
Reduction woodcut, 2009.
Signed. Edition 110.
20 x 15 in. \$250.

129-C. BEN MOREAU
(American, b. 1977) *Yawn*.
Etching, aquatint, 2010.
Signed. Edition 12.
15 x 15 in. \$275.



127-C. HIBIKI MIYAZAKI
(American, b. 1974) *Women with Tulips*.
Intaglio, 2003. Signed. Edition 18.
18-1/2 x 19 in. \$500.



134-C. JULIE NISKANEN
(American, b. 1983)
Sanctuary. Mezzotint,
2007-08. Edition of 16.
23-1/2 x 17-1/2 in. \$945.

135-C. JULIE NISKANEN
(American, b. 1983)
Dispersion. Mezzotint, 2009.
Signed. Edition 16.
8 x 7 in. \$395.



130-A. FRANCISCO MORA (Mexican, 1922-2002)
El Arbol (The Tree). Linocut, 1950. Signed.
Artist's proof. 6-3/4 x 7-1/4 in. [30492c] \$800.



131-A. FRANCISCO MORA (Mexican, 1922-2002)
Educandose (Educating Each Other). Linocut, 1971. Signed
and dated in pencil. Artist's proof. 7x-8/34 in. [30498c] \$800.

Many more linocuts and lithographs by Francisco Mora on
DAVIDSONGALLERIES.COM



132-A. TOKIO MIYASHITA
(Japanese, b. 1930) *Work B-6*.
Color etching and relief print.
Signed. Edition 4/35. 21 x 18 in.
[30364c] \$350.



133-A. TOKIO MIYASHITA
(Japanese, b. 1930) *Work V-2*.
Color etching and relief print, c. 1965.
Signed. Edition 9/35. 16 x 11-1/4 in.
Some minor discoloration in margins,
toned verso. [30363c] \$275.





136-A. JACKSON LEE NESBITT (American, 1913-2008) *November Evening*. Etching, c. 1940. Signed. Edition 250. Published by Associated American Artists. Retif and Salzer 24. 8-3/4 x 11-13/16 in. [30735c] \$900.



137-A. JUAN O'GORMAN (Mexican, 1905-1982) *Póker de Ases con Gorila (La Mariposa)*. Lithograph, 1963. Signed. Edition 26/50. Long soft fold along right side, old tape residue verso. 17 x 20-7/8 in. [30709c] \$2200.



138-C. CAMILLE PATHA (American, b. 1938) *It Goes*. Oil on board, 2010. Signed. 24 x 24 in. \$2500.



139-A. MERLE PERLMUTTER (American, contemporary) *A Perfect Landing*. Mezzotint, 1992. Signed. Edition 32/150. Presentation print for Society of American Graphic Artists. 2-1/2 x 2-1/2 in. [29309c] \$150.



140-C. MARION PECK (American, b. 1963) *Girl with Hamster*. Oil on panel, 1996. 20 x 14 in. \$2800.



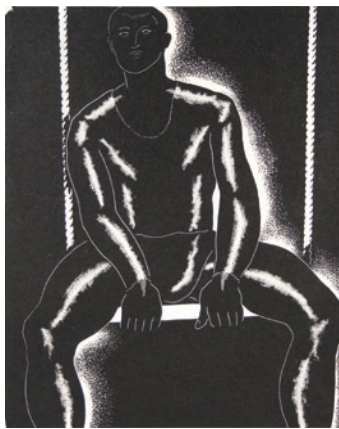
141-C. ROBERT PATIERNO (American, b. 1949) *Hawk/Crows*. Reduction woodcut, 2010. Signed. Edition 15. 12 x 16 in. \$400.



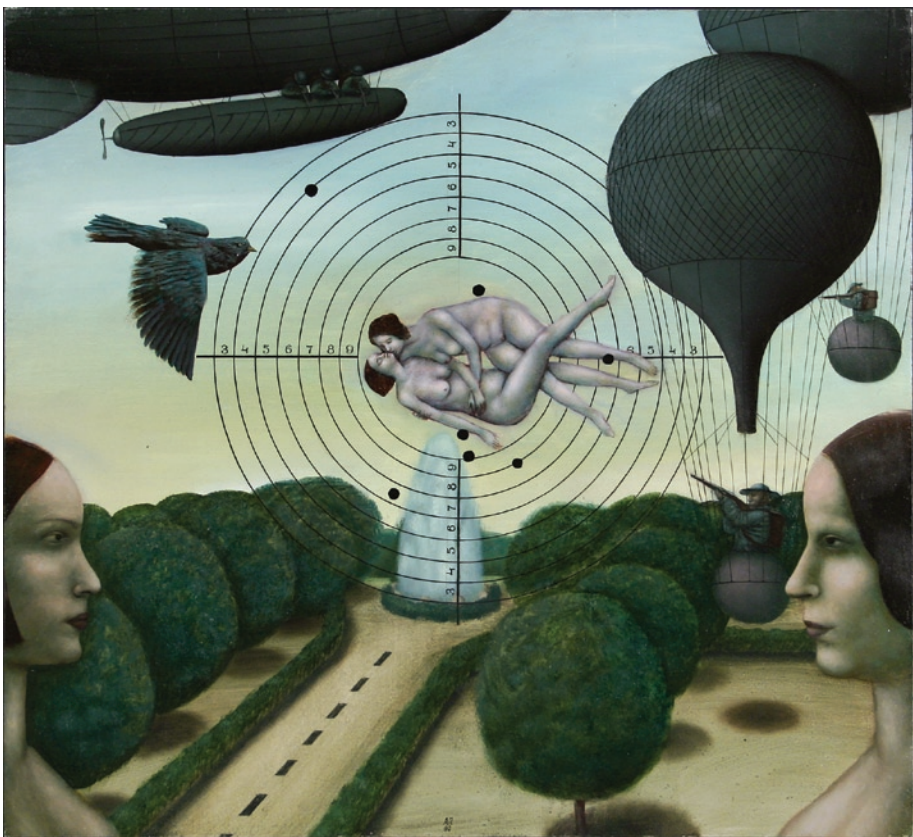
142-C. CHRIS PAPA (American, b. 1966) *1890*. Woodcut, 2008. Signed. Edition 10. 17-1/2 x 20-1/4 in. \$475.



143-A. SALVATORE PINTO (American, 1905-1966) *Beach House*. Wood engraving, c. 1930. Signed "Salvatore Pinto - D.P." Edition 50. 6-3/4 x 8-1/2 in. [30742c] \$425.



144-A. SALVATORE PINTO (American, 1905-1966) *Trapeze Performer*. Wood engraving. Signed. Edition 50. A few faint spots in the margin. 8-1/2 x 6-3/4 in. [30743c] \$500.



145-C. ALEXANDER PETROV (Russian, b. 1957) *Old Targets*. Oil on board, 1992. Signed. 20 x 22 in. \$3000.



146-A. JOSÉ GUADELUPE POSADA (Mexican, 1851-1913) *Barata De Calaveras*. Full sheet broadside, 1907. Type metal engraving on light blue stock (color has faded where not covered by previous mat.) Text and additional images verso. 14 x 9-3/4 in. [30614c] \$650.



147-A. JOHN EDGAR PLATT (British, 1886-1967) *The Jetty: Sennen Cove*. Color woodblock, 1921. Edition 71/100. Signed. Some toning corresponding to previous mat window. 10-9/16 x 9-1/4 in. [30587c] \$1100.



148-A. ALEXANDER PETROV (Russian, b. 1957) *65th Kilometer*. Oil on masonite. Signed. 11-3/4 x 13-7/8 in. \$2000.



149-A. *Veduta di Piazza Navona* (View of the Piazza Navona). Etching from *Views of Rome*, 1751. Hind 16 iv/vi. Roman edition. 16 x 21-1/2 in. [30606c] \$2800.



150-A. *Reconstruction of the Hippodrome with Part of the Via Appia*. Etching for *Antichita Romane*. Focillon 287, Wilton-Ely 422. Reinforced centerfold. Excellent impression with some spotting and foxing (especially verso) and very faint trace of toning. 1/2 inch tear bottom margin center, well away from image. 15-3/4 x 24 in. [30665c] \$2500.



151-A. *Scenographia Pontis Hodie Mollis* (The bridge known as Ponte Mollo). Etching for *Campus Martius*. Wilton-Ely 600, Focillon 469. First Paris Edition. Printer's crease in bottom margin. 9-3/8 x 14 in. [30610c] \$850.



152-A. *Ara Antica*. (Ancient Altar). Etching for *Prima Parte di Architecture e Prospettive* (Part One of Architecture and Perspective), 1748. Ficacci 66, Focillon 78, Wilton-Ely 96. 9-1/4 x 13-3/4 in. [29451c] \$700.



153-A. *Sala all'uso degli Antichi Romani*. (Hall in the Corinthian Order). Etching for *Prima Parte di Architecture e Prospettive* (Part One of Architecture and Perspective), 1748. Robinson 7 iv/vi, Wilton-Ely 9. Early Roman edition (1750-60). Minor faint stain in top margin. 10-1/4 x 14-1/4 in. [30607c] \$700.



154-A. *Veduti Degli Avanzi dell' Anfiteatro Flavio* (View of the remains of the Colosseum, also known as *Flavius Amphitheater*). For *Le Antichita Romane*, 1756. First Paris Edition, 1800-1809. (Partial watermark: Robinson 82). 5-1/2 x 10-5/8 in. [30619c] \$275.



155-A. REMBRANDT HARMENSZ VAN RIJN (Dutch, 1609-1669)
Christ Seated Disputing with the Doctors. Etching, 1654. Signed and dated in the plate. Bartsch 64, Hind 277, Björklund 54-E. Second state of two. 3-5/8 x 5-11/16 in. [30748c] \$2500.



156-C. MATT REBOLZ (American, b. 1978)
Underground Experimental Cavern. Intaglio and chine colle, 2009. Signed. Edition 5. 12 x 24 in. \$750.



157-C. BARBARA ROBERTSON (American, b. 1952)
Light Gray 6. Pigment print and acrylic on paper, 2010. Signed. 19 x 25 in. \$950.



158-A. PAUL REVERE (American, 1734-1818)
The Bloody Massacre perpetrated in King-Street, Boston, on March 5th 1770 by a party of the 29th Regiment. Engraving, c. 1770. This impression is 1842/1950 from the 200th anniversary edition published in 1970 by The Imprint Society. Comes with HC presentation book. 8 x 9 in. [18400c] \$250.



159-C. LOTTA PYYKKÖNEN (Finnish, b. 1971)
Traces on the Moor. Woodcut, 2002. Signed. 14 x 20-1/2 in. \$545.

160-163-A PIERRE-AUGUSTE RENOIR (French, 1841-1919) Original lithographs, c. 1904. Published in *Vollard's Douze Lithographies Originales de Pierre-Auguste Renoir*, 1919. Total edition 1000. One of 950 on vellum. Each sheet: 12-3/4 x 10 in.



160-A Femme au cep de Vigne, 1er variante (Woman by the Grapevine, 1st variant). This is the first and only published edition; the stone was effaced after printing. Signed in the stone. Stella 45ii. [30573c] \$2800.



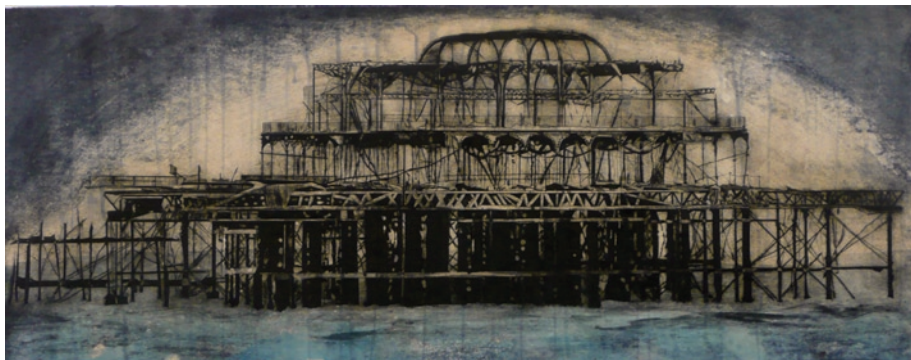
161-A Etude de Femme Nue, Assise, Variante. Stella 43iii (with signature in the stone). [30572c] \$2800.



162-A Femme au cep de Vigne, 3ème variante (Woman by the Grapevine, 3rd variant). This is the first and only published edition; the stone was effaced after printing. Signed in the stone. Stella 47ii. [30575c] \$1800.



163-A Femme au cep de Vigne, 4ème variante (Woman by the Grapevine, 4th variant). This is the first and only published edition; the stone was effaced after printing. Signed in the stone. Stella 48, only state. [30574c] \$1800.



164-C. JENNY ROBINSON (British, b. 1957) *View from the Beach*. Drypoint, spit-bite, and chine colle, 2010. Signed. Edition 10. 13 x 33-1/2 in. \$850.



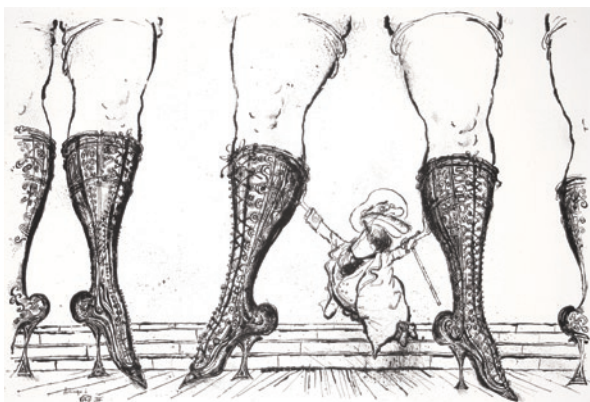
165-A. JUN'ICHIRO SEKINO (Japanese, 1914-1988) *Four Children*. Color woodblock, c.1956. Signed. Edition 11/100. 21 x 16 in. [30565c] \$625.



167-A. RONALD SEARLE (British, b. 1920) *Hommage à Toulouse-Lautrec* (plate II, from a portfolio of six). Original lithograph, 1969. Signed. Edition 49/70. 15-1/2 x 23-3/4 in. [30638c] \$1200.



166-C. ROMAN ROMANYSHYN (Ukrainian, b. 1957) *Diana's Dreams* (Ex Libris NH). Etching and aquatint, 2004. Signed. Edition 40. 6-5/8 x 4-1/8 in. \$200.



168-A. RONALD SEARLE (British, b. 1920) *Hommage à Toulouse-Lautrec* (plate IV, from a portfolio of six). Original lithograph, 1969. Signed. Edition 54/70. 15-3/4 x 23-1/4 in. [30637c] \$1200.



169-A. GEORGES ROUAULT (French, 1871-1958) *Dame du Haut-Quartier Croit Prendre pour le Ciel* (The well-bred lady thinks she has a reserved seat in Heaven). Plate 16 for *Misère*. Mixed etching, 1948. Published by Etoile Filante, Paris. Edition 425 + HC. Wofsy 123. 22-1/2 x 16-1/4 in. [30540c] \$1200.



170-A. JOHN SLOAN (American, 1871-1951) *Nude with Cigarette*. Etching, 1931. Signed in pencil and in the plate. Intended edition 100, 70 printed. Morse 249. 5-3/8 x 6-3/4 in. [30732c] \$1100.



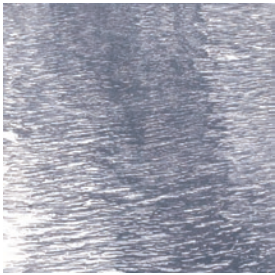
171-C. JENNY SCHMID (American, b. 1969) *Land of the Nihilists*. Etching and chine colle, 2010. Signed. Edition 12. 22 x 16 in. \$375.



172-C. JENNY SCHMID (American, b. 1969) *Land of the Hedonists*. Etching and chine colle, 2010. Signed. Edition 12. 22 x 16 in. \$375.



173-C. REINER SCHWARZ (German, b. 1940) *Das D - Modell*. Color lithograph, 1969. Signed. Edition VII/XX. 13 x 10-1/8 in. \$325.



174-C. ZHA SAI (Chinese, b. 1974) *The Sway of Shadow*. Reduction woodcut, 2006. Signed. Edition 30. 11-1/2 x 11 in. \$300



175-C. CAROL SUMMERS (American, b. 1925) *Achilles Pyre*. Woodcut, 2010. Signed. Edition 50. 12 x 12 in. \$300.



176-A. HIROJUKI TAJIMA (Japanese, 1911-1984) *30 - I*. Color relief print, 1964. Signed. Skinning from previous adhesive in top and bottom margins not affecting image. Yoseido Gallery sticker verso. 8-1/2 x 5-3/4 in. [30365c] \$250.



177-C. SELENE SANTUCCI (American, b. 1950) *Eye Witness*. Oil on canvas, 2010. Signed. 30 x 30 in. \$2500.



178-C. AKIKO TANIGUCHI (Japanese/Canadian, b. 1967) *Essence of Water II*. Etching, drypoint, chine colle, 2004. Signed. Edition 15. 15 x 7 in. \$450.



179-A. LYND WARD (American, 1905-1985) *Cup of Sky*. Wood engraving, 1965. Signed. Unnumbered edition on thin tissue. 20 x 11-7/8 in. [30559c] \$425.



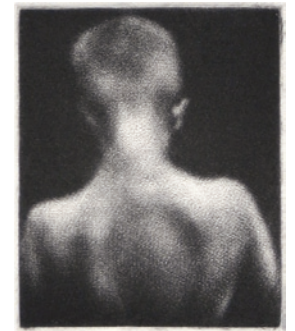
180-C. DAVID STEIN (American, b. 1977) *An Unexpected Guest*. Oil on panel, 2010. Signed. 24 x 18 in. \$3500.



181-A. LYND WARD (American, 1905-1985) *Thicker*. Wood engraving, 1977. Signed. Unnumbered edition on thin tissue. 15 x 12-1/8 in. [30558c] \$425.



182-C. LISA SWEET (American, b. 1965) *Weed*. Oil on panel, 2008. Signed. 11-1/4 x 9-1/4 in. \$850.



183-C. CLEO WILKINSON (Australian, b. 1959) *Then*. Mezzotint, 2009. Signed. Edition 40. 2 x 1-1/2 in. \$75.



184-A. SADAO WATANABE (Japanese, 1913-1996) *Three Kings*. Color stencil print, 1976. Signed. Edition 17/70. Slight fading. 21 x 17-1/2 in. [30725c] \$950.



185-A. CHARLES WHITE (American, 1918-1979) *I Have a Dream*. Lithograph, 1976. Signed. Edition 21/125. "CAC LACMA" (Contemporary Arts Center, LA County Museum of Art) embossed, lower right. Buff color of sheet very slightly light bleached except where not concealed by mat at outer edge of sheet. 22 x 29-1/2 in. [30563c] \$5000.



186-A. GRANT WOOD (American, 1891-1942) *January*. Lithograph, 1938. Signed. Edition 250. Published by Associated American Artists. Cole 3. 9 x 11-7/8 in. [30616c] \$5500.



187-C. JENNIFER WORSLEY (American, b. 1975) *The River in October*. Woodcut, 2010. Signed. Edition 20. 18 x 24 in. \$545.



188-C. JENNIFER WORSLEY (American, b. 1975) *View from Saturna Island*. Woodcut, 2008. Signed. Edition 7. 10 x 20 in. \$250.



189-C. ART WERGER (American, b. 1955) *McMansions*. Mezzotint, 2010. Signed. Edition 75. 11-3/4 x 9-3/4 in. \$350.



190-A. TOSHI YOSHIDA (Japanese, 1911-1995) *White Plum in the Farmyard (Hakubai)*. Color woodblock, 1951. Signed. Unnumbered edition. 14-5/8 x 9-5/8 in. [30739c] \$450.



191-A. ZAO WOU-KI (Chinese/French, b. 1921) *LX*. Color lithograph, 1962. Signed. Edition 66/125. L'Oeuvre Gravée blindstamp, lower margin. 21 x 16 in. [30566c] \$1500.



192-C. PAUL WUNDERLICH (German, b. 1927)
Herrin Und Hund. Lithograph, 1972. Signed.
Edition 41/80. Huber 434. 26 x 20 in. \$900.



194-C. PAUL WUNDERLICH (German, b. 1927)
La Belle et La Bête. Lithograph, 1969. Signed.
Edition 67/75. H. 357. 25-1/2 x 19-3/4 in. \$650.



193-C. PAUL WUNDERLICH (German, b. 1927)
Vera. Lithograph, 1976. Signed. Edition 56/150.
H. 532. 30-1/4 x 23 in. \$750.



195-C. PAUL WUNDERLICH (German, b. 1927)
Die Strumpfe. Lithograph, 1965. Signed.
Edition 54/100. H. 252. 25-3/4 x 19-3/4 in. \$700.



196-A. FRANCISCO ZÚÑIGA (Costa Rican/
Mexican, 1912-1998) *La Novia*. Color lithograph,
1978. Signed. Edition 57/70. Some fading,
toned verso. 17-1/4 x 23 in. [30564c] \$1600.



197-C. DION ZWIRNER
(American, b. 1947) *Elemental
Landscape - Blue*. Mixed media on
paper, 2008. 39 x 39 in. \$3200.

CATALOG LIST 76 - FALL/WINTER 2010

NOTE: To contact the correct department please note the A (for Antique) or C (for Contemporary) after each item number.

A = **Antique Department**
Emily Pothast (206) 624-6700
emily@davidsonalleries.com

C = **Contemporary Department**
Cara Forrier (206) 624-1324
cara@davidsonalleries.com

DAVIDSON GALLERIES
313 Occidental Avenue South
Seattle, WA 98104

Hours: Tuesday - Saturday 10 to 5:30
Fax: (206) 624-4588

DAVIDSONGALLERIES.COM

All works are subject to prior sale. All items are guaranteed as described. A certificate of authenticity is available upon request. Please contact the gallery with questions or to discuss a work in detail. Dimensions are given in in., height precedes width. Orders are shipped promptly upon receipt of full payment. Works are normally shipped insured via U. S. Postal Service unless other arrangements are specified. Shipping charges vary and are dependent on size and value of items ordered. Washington State residents must add 9.5% sales tax. Items may be sent on "on approval" beginning two weeks after initial catalog release. Works may be returned to the gallery for any reason within two weeks of purchase for a full refund less shipping. Returned works should be securely packed and fully insured.

Please inform the gallery of any special collecting interests. The Antique Print Department is always willing to consider purchasing or consigning fine original prints either individually or entire collections.

Davidson Galleries is a charter member of the INTERNATIONAL FINE PRINT DEALERS ASSOCIATION and is committed to its strict ethical standards.

ifpda



198-A. HARTMANN SCHEDEL
(German, 1440-1514)
Ptolemaic World Map from the *Nuremberg
Chronicle*. Woodcut, 1493. Latin text verso.
Handcolored. Slight staining from binding,
adhesive along centerfold. 20-1/2 x 15-18 in.
[30723c] \$15,000.