



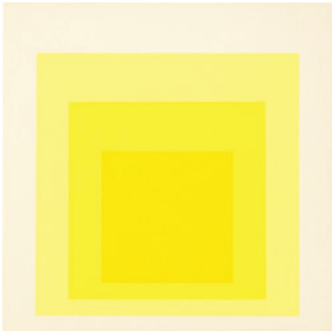
DAVIDSON GALLERIES

COVER IMAGE: Leonard BASKIN (American, 1922–2000) *Man of Peace*. Woodcut. Signed. 1952. Reference: Fern/O'Sullivan 180. 59 x 31 (image), 74 x 38½ (sheet). [53785c] \$1,500. Also available framed.

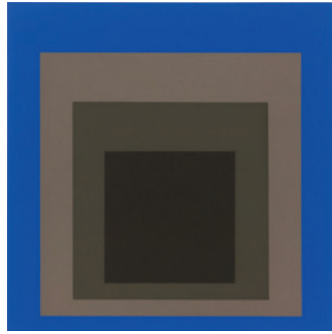


Davidson Galleries will host a major exhibition of Leonard Baskin's prints, drawings, watercolors, and sculpture in the gallery and online February 3–April 2, 2022. Visit our website to see our complete inventory of works by Leonard Baskin.

1. James Edmund ALLEN (American, 1894–1964) *The Breakers*. Lithograph. Signed. 1937. Edition of 90. 9 x 12⅞ (image), 11⅞ x 15⅞ (sheet). [53703c] \$850.



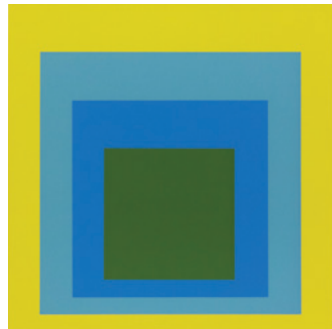
2. Josef ALBERS (German-born, American, 1888–1976) *Portfolio II, Folder 8*. From *Formulation: Articulation* Portfolio. Serigraph. 1972. Edition of 1000. Printed by Ives-Sillman, Inc. New Haven. Published by Harry N. Abrams, Inc. NY. 10 x 10 (image), 15 x 20 (sheet). [53929] \$950.



3. Josef ALBERS (American, 1888–1976) *Portfolio II, Folder 8*. From *Formulation: Articulation* Portfolio. Serigraph. 1972. Edition of 1000. Printed by Ives-Sillman, Inc. New Haven. Published by Harry N. Abrams, Inc. NY. 10 x 10 (image), 15 x 20 (sheet). [53930] \$950.



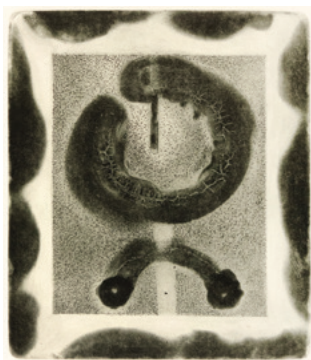
4. Josef ALBERS (American, 1888–1976) *Portfolio I, Folder 5*. From *Formulation: Articulation* Portfolio. Serigraph. 1972. Edition of 1000. Printed by Ives-Sillman, Inc. New Haven. Published by Harry N. Abrams, Inc. NY. 10 x 10 (image), 15 x 20 (sheet). [53931] \$950.



5. Josef ALBERS (American, 1888–1976) *Portfolio I, Folder 5*. From *Formulation: Articulation* Portfolio. Serigraph. 1972. Edition of 1000. Printed by Ives-Sillman, Inc. New Haven. Published by Harry N. Abrams, Inc. NY. 10 x 10 (image), 15 x 20 (sheet). [53932] \$950.



6. Glen E. ALPS (American, 1914–1996) *T 14*. From *The Tamarind Suite*. Color lithograph. Signed. Edition of 20. BFK Rives watermark. Artist's blindstamp lower right margin corner. Tamarind blindstamp lower left corner. 22³/₈ x 17¹/₂ (image), 30 x 22 (sheet). [53034c] \$750.



7. Glen E. ALPS (American, 1914–1996) *Sun Valley Sun*. Mixed intaglio. Signature stamp. AP. 11¹/₄ x 9³/₄ (plate), 22¹/₂ x 15 (sheet). [53532c] \$225.



8. Glen E. ALPS (American, 1914–1996) *Untitled (Floral Landscape)*. Mixed media painting. Signed. 1980. 25¹/₄ x 19¹/₈ (image/sheet). [53547c] \$675.



9. Glen E. ALPS (American, 1914–1996) *Flower Bouquet*. Mixed media. Unsigned. Studio stamp verso. 30 x 22¹/₄ (image/sheet). [53551c] \$700.



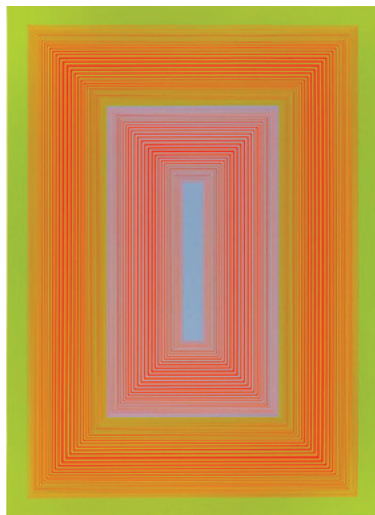
10. Glen E. ALPS (American, 1914–1996) *The Black Shape*. Intaglio. Unsigned. Studio stamp verso. 19¹/₄ x 19¹/₂ (plate), 22¹/₄ x 29³/₄ (sheet). [53543c] \$550.



11. Glen E. ALPS (American, 1914–1996) *Untitled (Geometric Abstraction)*. Color lithograph. Signed. Registration slits in margins. 17 x 22³/₄ (image), 20 x 26¹/₂ (sheet). [53554c] \$850.



12. Jiri ANDERLE (Czech, b. 1936) *Il Combattimento di Tancredie Clorinda II (The Battle of Tancred and Clorinda II)*. From *Ricercari in Omaggio* Portfolio. Drypoint and mezzotint. Signed. 1972. Edition 39/75. 17 x 13½ (plate), 25¼ x 19 (sheet). [53947c] \$575.



13. Richard ANUSZKIEWICZ (American, 1930–2020) *V*. From the *Sequential Portfolio*. Color serigraph. 1972. Edition of 200. Published by Sanmore Editions NY. 26 x 19 (image), 28 x 21 (sheet). [53923] \$650.



14. Tetsuo AOKI (Japanese, b. 1940) *Fun Times*. Woodcut. Signed. Edition 3/35. 7⅞ x 11½ (blocks), 9¾ x 13½ (sheet). [347217] \$215.



15. Tetsuo AOKI (Japanese, b. 1940) *Walking*. Woodcut. Signed. Edition 6/35. 8 x 21 (blocks), 11¼ x 24½ (sheet). [347220] \$375.



16. Karel APPEL (Dutch, 1921–2006) *Cats* (*Portfolio of 17 Lithographs*). Suite of 17 color lithographs on Arches housed in a deluxe case with the book *The Face of Appel*. Signed and numbered individually. 1978. Edition 1/125. Printed by Perrin, Paris. Published by Lerum Arts (Puyallup, WA) and London Arts Inc. (Detroit, MI). 22 x 30 (image), 24¾ x 32½ (sheet). [53686c] \$12,000 (complete portfolio).



17. Karel APPEL (Dutch, 1921–2006) *Waiting for a Second Kiss*. From *The Happy Meeting*. Color lithograph. Signed. 1974. Edition 51/120. 22 x 30 (image), 26¾ x 34 (sheet). [53784c] \$750.



18. Charles ARNOLDI (American, b. 1946) *Ellipse #4d*. Woodblock. Signed. 2019. Edition 11/25. 39¼ x 39½ (blocks), 47¼ x 47¼ (sheet). [344965] \$5,500.



19. David AVERY (American, b. 1952) *The Last Roundup*. Etching on laid paper. Signed. 2017. Edition 28/30. 6 $\frac{7}{8}$ x 5 $\frac{7}{8}$ (plate), 13 x 10 $\frac{1}{2}$ (sheet). [347488] \$400.



20. David AVERY (American, b. 1952) *Death and the Printmaker*. Etching. Signed. 2021. Edition 13/30. 8 $\frac{3}{4}$ x 5 $\frac{7}{8}$ (plate), 14 $\frac{1}{2}$ x 11 (sheet). [347490] \$550.



21. David AVERY (American, b. 1952) *The Young Man and Death*. Etching. Signed. 2020. Edition 8/30. 5 $\frac{7}{8}$ x 4 (plate), 11 x 8 $\frac{3}{8}$ (sheet). [347489] \$350.



22. Peggy BACON (American, 1895–1987) *Promenade Deck*. For the *New Republic Portfolio*. Etching and drypoint. Signed. 1920. Printed by Peter Platt. Archivaly backed with a thin Kozo sheet for strength. 6 x 8 $\frac{3}{8}$ (plate), 11 x 14 (sheet). [52480c] \$1,200.



23. Albert de BELLEROCHÉ (Welsh / English, 1864–1944) *Woman in Thought*. Lithograph. Signed. 5 x 4 (image), 8 $\frac{5}{8}$ x 6 (sheet). [50191c] \$350.



24. Albert de BELLEROCHÉ (Welsh / English, 1864–1944) *Une Jeune Fille*. Lithograph. Signed. Slight foxing and an ink mark in margin. 12 $\frac{3}{4}$ x 9 (image), 17 $\frac{1}{2}$ x 11 $\frac{1}{4}$ (sheet). [49592c] \$950.



26. Albert de BELLEROCHÉ (Welsh / English, 1864–1944) *Country Girl*. Lithograph. Signed. 1914. Good condition, slight rippling at center. 11 $\frac{1}{2}$ x 7 $\frac{1}{2}$ (image), 12 $\frac{3}{4}$ x 9 $\frac{3}{4}$ (sheet). [50295c] \$685.



25. Albert de BELLEROCHÉ (Welsh / English, 1864–1944) *Lili*. Lithograph. Signed. 10 x 7 $\frac{1}{2}$ (image), 14 $\frac{1}{4}$ x 11 $\frac{1}{4}$ (sheet). [49613c] \$550.



27. Albert de BELLEROCHÉ (Welsh / English, 1864–1944) *Modiste / Petite Tête de Profil*. Lithograph. Signed. 1913. Soft creases, tiny holes well away from image. Toning at edge of sheet. 7 $\frac{1}{2}$ x 5 $\frac{1}{2}$ (image), 12 $\frac{3}{4}$ x 8 $\frac{1}{2}$ (sheet). [49363c] \$525.



28. Hans BELLMER (German, 1902–1975) *Femme inversees (II)*. Engraved by Cécile Reims. After Bellmer's drawing *Miroir des songes* (*Mirror of Dreams*). Color engraving. Signed. 1971. Date of Impression 1974. EA. Printed by Atelier Boileau, Montargis. Published by Enrico Magaglio, Paris. Reference: Lauren Laz 316. 19¾ x 12¾ (plate), 25¼ x 18¾ (sheet). [53605c] \$575.



31. Hans BELLMER (German, 1902–1975) *Les Vélos*. From *Unterweisungen der Sexualität I*. Engraved by Cécile Reims. After Bellmer's drawing, *Étude pour l'Histoire de l'œil de Georges Bataille* (1946). Engraving. Signed. 1970. Date of Impression 1972. Edition 75/80. Printed by Atelier Moret. Published by Editions Propylaën, Berlin. Reference: Lauren Laz 232.3. 11½ x 7½ (plate), 25¾ x 19¾ (sheet). [53607c] \$400.



29. Hans BELLMER (German, 1902–1975) *Nu*. Engraving on Arches. Signed. 1972. Date of Impression 1973. Edition 34/70. Engraved by Cécile Reims. Published by Propylaën, Berlin. Reference: Lauren Laz 352. 9¾ x 9 (plate), 26 x 19¾ (sheet). [53606c] \$400.



30. Hans BELLMER (German, 1902–1975) *Tête de mort et Jeune fille* or *Baiser de la mort*. From *Unterweisungen der Sexualität II*. Engraved by Cécile Reims. After Bellmer's drawing *La Jeune Fille à la Mort* (*Vanité*) (1963). Engraving on Arches. 1972. Edition 40/80. Printed by Atelier Moret, Paris. Published by Propylaën, Berlin. Reference: Lauren Laz 345.3. 12½ x 9¾ (plate), 25¾ x 19¾ (sheet). [53608c] \$400.



32. Frank Weston BENSON (American, 1862–1951) *Running the Rapids*. Drypoint and etching. Signed. 1927. Edition of 150. Reference: Ordeman 269. $5\frac{7}{8} \times 7\frac{7}{8}$ (plate), $8\frac{1}{8} \times 10\frac{1}{2}$ (sheet). [53781c] \$900.



33. Frank Weston BENSON (American, 1862–1951) *On the Redhead Grounds*. Etching. Signed. 1924. Edition of 150 (published state). Reference: Ordeman 237. Slightly light struck where not covered by the mat. $9\frac{7}{8} \times 7\frac{3}{4}$ (plate), $15\frac{1}{8} \times 11\frac{3}{8}$ (sheet). [53909c] \$675.



34. Ben BERES (American, b. 1976) *What is Time*. Vitreograph. Signed. Edition 1/5. 16×12 (image), $21\frac{3}{4} \times 15$ (sheet). [346661] \$400.



35. Ben BERES (American, b. 1976) *Isolation*. Marbled monprint. Signed verso. 2021. Edition 1/1. $15 \times 11\frac{1}{8}$ (image/sheet). [346856] \$375.



36. Edmund BLAMPIED (English, 1886–1966) *Below Stairs*. Drypoint. Signed in ink. 1931. Edition 81/100. "Made In England" stamp lower right. Reference: Appleby 143. $10\frac{1}{4} \times 7\frac{3}{4}$ (plate), $15\frac{1}{2} \times 10$ (sheet). [46781c] \$1,800.



37. Auguste BROUET (French, 1872–1941) *Traveling Merchants*. Etching. Signed. Edition of 15. First state. HHL blindstamp near lower left of plate. $4\frac{1}{4} \times 6\frac{3}{4}$ (plate), $7\frac{3}{4} \times 9\frac{7}{8}$ (sheet). [53704c] \$185.



38. Arthur John Trevor BRISCOE (English, 1873–1943) *The Squall*. Etching. Signed. 1926. Trial Proof. Reference: Laver 67. Tape residue at upper margin. Toned at margin edges. $5\frac{5}{8} \times 8\frac{7}{8}$ (plate), $8 \times 11\frac{1}{4}$ (sheet). [52084c] \$185.



39. Aaron BOHRD (American, 1907–1992) *Summertime*. Lithograph. Signed. 1945. Edition of 250. Hinge residue at upper margin edge, verso. Toned. $9\frac{1}{8} \times 12\frac{7}{8}$ (image), $12 \times 15\frac{7}{8}$ (sheet). [53842c] \$225.



40. Albin BRUNOVSKY (Slovakian, 1935–1997) *Lamento della Ninfa II (The Nymph's Lament II)*. From *Ricerari in Omaggio* Portfolio. Stone lithograph. Signed. 1972. Edition 39/75. 19³/₈ x 14 (image), 25¹/₄ x 19 (sheet). [53949c] \$1,500.



41. Alexander CALDER (American, 1898–1976) *Joys of the Neophyte*. From *La Mémoire Élémentaire*. Color lithograph on Japon nacré paper. Signed. 1976. Pref. edition XIV/L. 28¹/₂ x 20¹/₂ (image/sheet). [347007] \$3,800.



42. Samuel CHAMBERLAIN (American, 1895–1975) *Auxerre*. Drypoint. Signed. Edition 51/75. Faint specks of foxing. 6 x 8³/₈ (plate), 9⁷/₈ x 12⁵/₈ (sheet). [52323c] \$400.



43. Samuel CHAMBERLAIN (American, 1895–1975) *Verdant Village*. Drypoint. Signed and numbered in pencil. Date of Impression 1931. Edition 16/100. Reference: Kingsland 107. A few spots verso, previous hinge residue. 6¹/₂ x 10³/₄ (plate), 8³/₄ x 13³/₄ (sheet). [29310c] \$425.



44. Samuel CHAMBERLAIN
(American, 1895–1975) *Cathedral Spires, Angiers*. Drypoint. Signed. Edition 5/75. Faint mat burn. 9 x 5 $\frac{5}{8}$ (plate), 14 x 8 $\frac{3}{4}$ (sheet). [48359c] \$250.



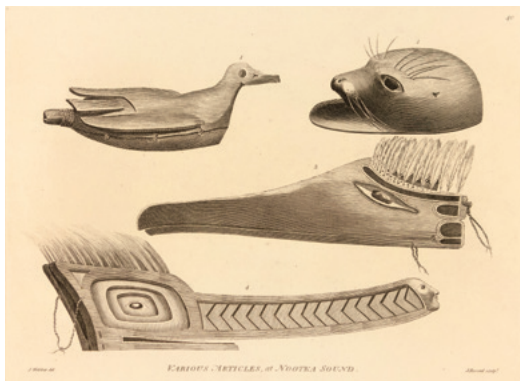
45. Samuel CHAMBERLAIN
(American, 1895–1975) *Verneuil*. Drypoint. Signed. 1929. Edition 52/100. Reference: Kingsland 88. 13 $\frac{1}{2}$ x 8 $\frac{1}{4}$ (plate), 16 x 11 (sheet). [51742c] \$550.



46. Robert CONNELL (American, b. 1947) *Hills Above Hood Canal*. Sumi ink and gouache on paper. Signed. 2020. 22 x 30 (image/sheet). [347171] \$900.



47. Fay CHONG (Chinese / American, 1912–1973) *Mount Si*. Watercolor with Chinese ink. June 23, 1971. Some water staining on lower left 1/3 of image. 18 $\frac{1}{2}$ x 36 (image showing), 25 x 42 (framed). [53682c] \$2,800 framed.



48. John WEBBER (English, 1751-1793) *Various Articles at Nootka Sound*. From *Captain Cook's Third Voyage*. Engraving. 1785. Engraved by J. Record. Margins trimmed slightly. 8 x 11 (plate), 11 x 14¼ (sheet). [29050c] \$275.



49. John WEBBER (English, 1751-1793) *A Man of Prince William's Sound*. From *Captain Cook's Third Voyage*. Engraving. Engraved by James Basire (1730-1802). 12⅞ x 9½ (plate), 20¾ x 15¼ (sheet). [32147c] \$275.



50. John WEBBER (English, 1751-1793) *Inside of a House in Nootka Sound*. From *Captain Cook's Third Voyage*. Engraving. 1785. Engraved by W. Sharp. 10½ x 16 (plate), 13 x 18 (sheet). [29055c] \$385.



51. Jonnel COVAULT (American, b. 1954) *Tolowa Totem*. Linocut. Signed. 2009. Edition 6/20. 39 x 16½ (image), 44 x 21¼ (sheet). [346889] \$725.



54. Lockwood DENNIS (American, 1937–2012) *Loader*. Reduction woodcut. Signed. 2002. Edition 26/30. 7 x 9 (blocks), 13¼ x 14 (sheet). [39330] \$500.

55. John Stockton de MARTELLY (American, 1903–1979) *Chore Boy*. Lithograph. Signed. Very faint toning. 9⅞ x 12⅞ (image), 11 x 14¾ (sheet). [53843c] \$450.



52. John Edward COSTIGAN (American, 1888–1972) *Workers of the Soil*. Etching. Signed. Faintly toned. 8¼ x 12⅞ (plate), 13 x 14⅞ (sheet). [53706c] \$300.

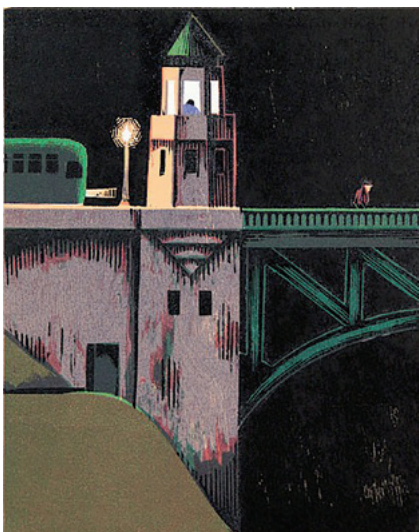


53. Honore DAUMIER (French, 1808–1879) *Miscellaneous drawings, sheet fragment*. Pencil drawings on front and verso. Unsigned. Provenance: The Roger Marx Collection (noted on mat). 10 x 8⅞ (irregular sheet). [53624c] \$1,200.





56. Lockwood DENNIS (American, 1937–2012)
Five O'Clock. Woodcut.
Unsigned. 1992.
Unnumbered. 5½ x 14
(blocks), 13 x 22 (sheet).
[35633] \$900.



57. Lockwood DENNIS (American, 1937–2012)
Bridge. Woodcut. Signed. 1995. Edition 47/50. 15 x 12
(blocks), 22 x 17 (sheet). [38142] \$550.



58. Lockwood DENNIS (American, 1937–2012) *3 Cars at Night*. Woodcut. Signed. 1985. Edition 30/34. Reference: LD 26. 7½ x 12 (blocks), 13 x 17 (sheet). [34845] \$265.



59. Lockwood DENNIS (American, 1937–2012)
Homeward. Woodcut. Signed. 1986. Edition 17/25.
15 x 12 (blocks), 19 x 15 (sheet). [37249] \$375.



60. Lockwood DENNIS (American, 1937–2012)
Waiting for the Train. Woodcut. Signed. 1986. Edition
7/25. 15 x 12 (blocks), 19 x 15 (sheet). [37232] \$850.



61. Kerr EBY (American, 1890–1946) *Digging Clams*. Etching. Signed. 1931. Chicago Society of Etchers blindstamp. FI Heade watermark. Reference: Giardina 163. $8\frac{1}{2} \times 12\frac{5}{8}$ (plate), $11\frac{1}{2} \times 16$ (sheet). [53841c] \$200.



62. Andy ENGLISH (British, b. 1956) *Wandering Wombat*. Wood engraving. Signed. Edition 71/100. $3\frac{1}{4} \times 2\frac{1}{2}$ (image), $10\frac{1}{4} \times 7$ (sheet). [347066] \$50.



63. Maurits Cornelis ESCHER (Dutch, 1898–1972) *Scarabs*. Wood engraving. April 1935. Reference: Bool 273. $7\frac{1}{8} \times 9\frac{1}{2}$ (block), $9\frac{3}{4} \times 12\frac{3}{4}$ (sheet). [52714c] \$3,200.



64. Fan FANG (Chinese, b. 1982) *Running! Generation Born in 1980s*. Lithograph. Signed. 2014. Edition 5/10. $21\frac{1}{2} \times 24\frac{3}{8}$ (image), $22\frac{1}{2} \times 30$ (sheet). [332584] \$1,350.



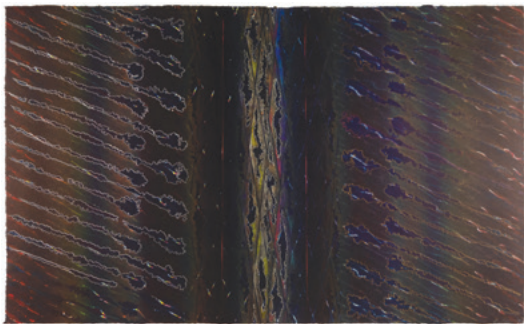
65. Kevin FLETCHER (American, b. 1956) *A Major Brewing Town Under a Full Moon*. Monotype. Signed. 2021. Edition 1/1. 12 x 9 (image), 14½ x 11 (sheet). [347087] \$500.



66. Kevin FLETCHER (American, b. 1956) *Manned Flight Workshop in Blue Grey - Wing Form Construction*. Monotype. Signed. 2020. Edition 1/1. 14¾ x 11¾ (image), 18¾ x 15 (sheet). [347094] \$600.



67. George H. FLAVELLE (American, 1868–1945) *Quiet Brook*. Watercolor. Signed. 18¼ x 25¾ (image/sheet). [11100c] \$1,200.



68. Joe FEDDERSEN (Native American (Colville Reservation), b. 1953) *Shelter from Night Rain*. Mixed technique (2 sheets). Signed. 1981. 217/8 x 35¼ (image/sheet). [53573c] \$3,800.



69. Richard FLORSHEIM (American, 1916–1979) *Gulls and Rocks*. Color lithograph. Signed. Edition 179/250. 29½ x 97⁄8 (image), 34¼ x 16½ (sheet). [53604c] \$325.



71. Peter FORD (English, b. 1937) *The Forest Path Spring*. Etching and aquatint. Signed in pencil. Edition 22/100. 43⁄8 x 57⁄8 (plate), 73⁄8 x 95⁄8 (sheet). [47597c] \$100.



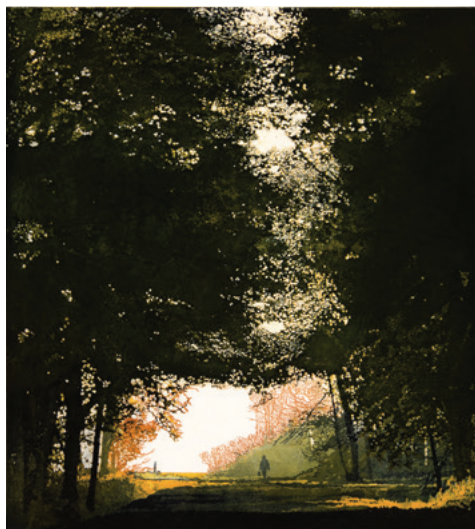
70. Johnny FRIEDLAENDER (German, 1912–1992) *Soir*. Color etching and aquatint. Signed. Edition 91/95. Published by L'Oeuvre Gravée, Paris & Zürich. 21½ x 15½ (plate), 243⁄8 x 181⁄8 (sheet). [53602c] \$1,050.



72. Don FREEMAN (American, 1908–1978) *Casting for Character*. Lithograph. Signed. 1934. Edition of 184. Published by AAA. Reference: McCulloch 87. 10 x 12 (image), 11¾ x 16 (sheet). [53844c] \$350.



73. Vladimir GAZOVIC (Slovak, b. 1939) *Il Ballo delle Ingrate I (The Dance of the Ingrates I)*. From *Ricerari in Omaggio* Portfolio. Color lithograph. Signed. 1972. Edition 39/75. $17\frac{3}{8} \times 13\frac{1}{4}$ (image), $25\frac{1}{4} \times 19$ (sheet). [53950c] \$385.



74. Phil GREENWOOD (Welsh, b. 1943) *Going Home*. Etching and aquatint. Signed. Edition 35/150. $21\frac{1}{4} \times 19\frac{3}{4}$ (image), $28\frac{1}{2} \times 26\frac{1}{8}$ (sheet). [346762] \$425.

75. R.C. GORMAN (Native American, Navajo, 1932–2005) *Mother and Child*. Lithograph. Signed and numbered. 1966. Edition 94/100. $17 \times 23\frac{1}{2}$ (image), 20×25 (sheet showing). [47532c] \$850. Also available framed.



76. Red GROOMS (American, b. 1937) *Wounded Bird*. Color lithograph. Signed and dated in the stone. 1978. Usual centerfold, one vertical fold at right edge and one vertical fold at left edge, $\frac{1}{4}$ " from each side. $8\frac{1}{2} \times 22$ (image), $8\frac{1}{2} \times 23\frac{1}{2}$ (sheet). [53287c] \$675.



77. Arthur William HEINTZELMAN (American, 1891–1965) *Mascarade*. Drypoint. Signed. 1935. Edition of 70. 12 x 8 $\frac{7}{8}$ (plate), 17 $\frac{1}{4}$ x 13 $\frac{1}{2}$ (sheet). [53709c] \$250.



78. Dorothy L. HEAVENER (American, 1917–n.d.) *Under the Pike Place Market*. Lithograph. Signed. Marked "Edition 1." Rare. 8 $\frac{1}{4}$ x 5 $\frac{7}{8}$ (image), 12 $\frac{3}{4}$ x 10 $\frac{1}{8}$ (sheet). [53708c] \$325.



79. Kent HAGERMAN (American, 1893–1978) *Laying the Keels for Victory*. Etching. Signed. Edition 33/130. Provenance: Commissioned by Tampa FL Shipbuilding Co., label included. 7 $\frac{1}{2}$ x 6 $\frac{3}{4}$ (plate), 11 $\frac{3}{8}$ x 10 (sheet). [53707c] \$200.



80. Takeshi HARA (Japanese, b. 1942) *Strokes 81 - 23*. Color lithograph. Signed. 1981. Edition 27/40. 18 x 36 (image), 27 $\frac{3}{4}$ x 41 $\frac{3}{4}$ (sheet). [46420c] \$750.



81. Henricus HONDIUS (Dutch, 1597–1651) *Sveciae, Norvegiae, et Daniae*. Engraving with hand coloring. French text verso. Thin backing sheet for strength. 18 $\frac{5}{8}$ x 21 $\frac{7}{8}$ (plate), 19 x 22 $\frac{3}{4}$ (sheet). [53603c] \$725.



82. Charles Edwin HOPKINS (American, 1886–n.d.) *Birch Trees*. Watercolor. Signed. 28 x 15 $\frac{1}{8}$ (image/sheet). [11099c] \$950.



83. John HULTBERG (American, 1922–2005) *Escape in Anguish*. Lithograph. Signed. 1963. Edition 15/20. Tamarind blindstamp. 22 x 30 (image/sheet). [53775c] \$485.



84. Jonelle JOHNSON (American, b. 1945) *Fugue*. Monotype. Signed. 2021. Edition 1/1. 21 x 39 $\frac{1}{2}$ (image), 27 $\frac{1}{4}$ x 42 $\frac{1}{2}$ (sheet). [346703] \$850.



85. Helmi Dagmar JUVONEN (American, 1903–1985) *Frog*. Relief print in red attached to gray backing sheet. Signed. 5½ x 3¼ (image), 6 x 3⅝ (sheet). [53968] \$150.



87. Helmi Dagmar JUVONEN (American, 1903–1985) *Whale*. Relief print attached to orange backing sheet. Signed. 5¾ x 3¼ (image), 6 x 3⅝ (sheet). [53967] \$125.

89. Winslow HOMER (American, 1836–1910) *Dad's Coming! For Harper's Weekly*. Wood engraving. November 1st, 1873. Reference: Beam 205. 9¼ x 13⅝ (block), 10⅝ x 15½ (sheet). [52530c] \$400.

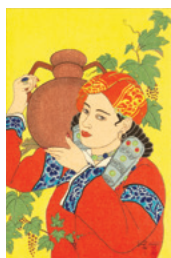
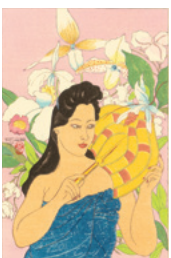
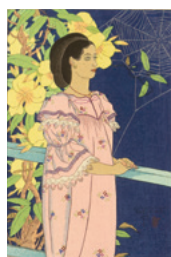


86. Virginia HUNGATE-HAWK (American, b. 1985) *The Yellow Between*. Etching. Signed. 2019. AP. 12 x 9 (image), 18¼ x 14 (sheet). [346695] \$350.



88. Yo IWASHITA (Japanese, 1917–n.d.) *Masked Actors*. Stencil print. Signed. 1970. Edition 15/100. 13⅛ x 9 (image), 16¼ x 13 (sheet). [53916c] \$325.





90. Paul JACQULET (French, 1902–1960) *Album of Surimono Cards*. 20 miniature color woodblock prints housed in a bound book with fabric cover. Each card attached to a sheet with the message "Merry Christmas and a Happy New Year". 5¾ x 4 (each image), 6¾ x 4½ (each sheet). [53963c] \$8,000.



91. Shiro KASAMATSU (Japanese, 1898–1991) *Timber Yard*. Color woodblock. Stamped signature. Likely early printing by Mikumo. 14½ x 9¾ (blocks), 16 x 10¾ (sheet). [53218c] \$325.



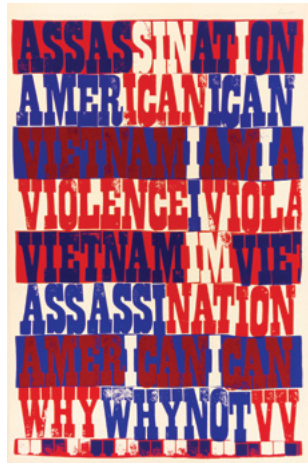
93. Harold E. KEELER (American, 1905–1968) *Misplaced Totem Pole*. Color lithograph. Signed. Edition 4/10. A few spots of foxing in margins at top of sheet. 19 x 14¼ (image), 22½ x 17½ (sheet). [30453c] \$600.

A special collection of Sister Mary Corita Kent's serigraphs are now on exhibition in the gallery November 5 - December 24. Visit our website to see the full selection.

95. Sister Mary Corita KENT (American, 1918–1986) *n willing to be vulnerable* (*Those who are willing to be vulnerable...*). From *Circus Alphabet*. Serigraph. Signed. 1968. Reference: Corita Art Center 68-44. 22½ x 22½ (image), 23 x 23⅛ (sheet). [53896c] \$2,850.

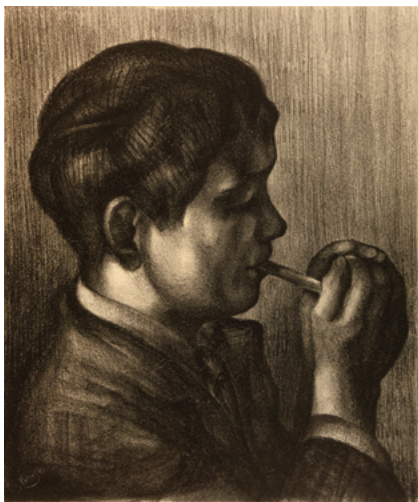


92. Harold E. KEELER (American, 1905–1968) *North West Ferry*. Color lithograph. Signed. Edition 14/15. 9½ x 12 (image), 11¼ x 14¾ (sheet). [30465c] \$275.



94. Sister Mary Corita KENT (American, 1918–1986) *american sampler*. Serigraph. Signed. 1969. Reference: Corita Art Center 69-65. 17½ x 11½ (image), 19 x 12 (sheet). [53876c] \$2,500.





96. Alexander Zerdin KRUSE (American, 1888–1972) *Young Smoker*. Lithograph. Signed. Edition of 50. Toned. 11 x 9 $\frac{1}{8}$ (image), 13 $\frac{3}{4}$ x 11 (sheet). [53710c] \$285.



97. Käthe KOLLWITZ (German, 1867–1945) *Praying Girl (Betendes Mädchen)*. Aquatint with soft ground etching. Date of Plate 1892. Von der Becke blindstamp lower right corner. Reference: Klipstein II, IVb. 7 $\frac{1}{2}$ x 5 $\frac{7}{8}$ (plate), 9 $\frac{3}{4}$ x 7 $\frac{1}{2}$ (sheet). [53600c] \$625.



98. Karen KUNC (American, b. 1952) *Alightingly*. Woodcut. Signed. 2021. Edition 7/7. 14 x 29 (image/sheet). [347117] \$1,650.



99. Art LANDY (American, 1904–1977) *The Harvesters*. Lithograph. Signed. c. 1940. Edition 18/25. 10 x 7 $\frac{3}{4}$ (image), 15 x 11 (sheet). [53711c] \$385.



100. Oldrich KULHANEK (Czech, 1940–2013) *Gira Il Nemico Insidioso (The Insidious Enemy Turns)*. From *Ricercari in Omaggio Portfolio*. Color etching. Signed. 1972. Edition 39/75. 16 $\frac{7}{8}$ x 11 $\frac{1}{8}$ (plate), 25 $\frac{1}{4}$ x 19 (sheet). [53952c] \$650.



101. Carrie LINGSCHUIT (American, b. 1984) *Kindred*. Intaglio. Signed. Edition 21/50. 7½ diameter (image), 14 x 11 (sheet). [346867] \$325.



102. Carrie LINGSCHUIT (American, b. 1984) *Jackalope Family*. Intaglio. Signed. Edition xx/xxv. 13 x 9 (image), 17½ x 15 (sheet). [346871] \$400.



103. Henri LAURENS (French, 1885–1954) *Femme Allongée au Bras Levé (Reclining Woman with Raised Arm)*. Color lithograph. Signed. 1950. Épreuve d'artiste. 11¾ x 17½ (image), 15 x 22 (sheet). [53630c] \$725.



104. Clare V. H. LEIGHTON (English/American, 1898–1989) *Landing*. From *Lumber Camp* series. Wood engraving. Signed and titled. 1931. Edition 20/100. Reference: Boston Public Library 195. 8¼ x 12¾ (block), 11½ x 17½ (sheet). [53852c] \$1,800.



105. Auguste Louis LEPÈRE (French, 1849–1918) *Le Grand Marché aux Pommes* (*The Great Apple Market*). Etching. Signed. Also signed and dated in the plate. Date of Plate 1917. Edition 46/150. Van Gelder Zonen watermark. 12 x 18³/₈ (plate), 18 x 22³/₄ (sheet). [52484c] \$800.



106. Marie LAURENCIN (French, 1883–1956) *La Belle Écossaise* (*The Beautiful Scottish Girl*). Etching. Signed. 1913. Edition 16/25. Reference: Marchesseau 28. Pin holes in margin corners. Some soiling, small tear at lower center margin edge. 9³/₄ x 7³/₄ (plate), 14¹/₈ x 10⁷/₈ (sheet). [53628c] \$1,600.



107. Yang LIAO (Chinese, b. 1983) *Where Are Parents*. Lithograph. Signed. Edition 19/40. 39 x 27 (image), 44¹/₄ x 30¹/₄ (sheet). [332568] \$1,250.



108. Max LIEBERMANN (German, 1847–1935) *Junge Hirtin* (*Young Shepherdess*). Etching. Signed. 1894. Reference: Schiefeler 31. 6¹/₄ x 7 (plate), 7¹/₈ x 9³/₄ (sheet). [53626c] \$575.



109. Andre MASSON (French, 1896–1988) *Visage Rose*. Color lithograph. Signed. c. 1975. Edition 130/200. 23 x 17 (image), 20¾ x 22 (sheet). [53868c] \$725.



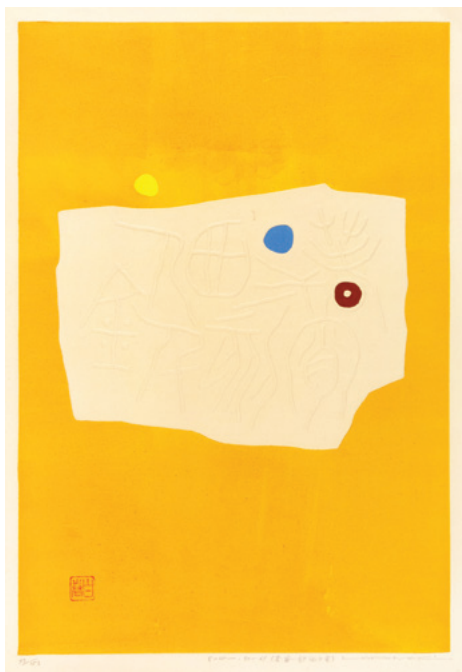
110. Charles Wheeler LOCKE (American, 1899–1983) *Waiting Room*. Lithograph. Signed. c. 1930. Edition of 40. 6⅝ x 8¼ (image), 9⅜ x 12½ (sheet). [53712c] \$550.



111. James MCBEAY (Scottish, 1883–1959) *Dust, Beersheba*. From *Camel Patrol Series*. Etching and drypoint. Signed and dated in the plate. November 1917. Date of Plate 1920. Edition A 13 (American edition). Reference: Hardie 193. 9 x 15½ (plate), 10⅝ x 17 (sheet). [53779c] \$1,200.



112. Haku MAKI (Japanese, 1924–2000) *Poem 70-44*. Embossed relief print. Signed. 1970. Edition 130/202. 10½ x 7⅞ (block), 12 x 8¾ (sheet). [53870c] \$385.



113. Haku MAKI (Japanese, 1924–2000) *Poem 70-11*. Color relief print with embossing. Signed. 1970. Edition 93/153. Soft crease at lower right corner. 15 x 10 (image), 16⅝ x 12¼ (sheet). [53872c] \$600.



114. John MCCRADY (American, 1911–1968) *Carnival in New Orleans*. Lithograph. Signed. 1947. Edition of 250. 8¾ x 12¼ (image), 11½ x 16 (sheet). [53713c] \$850.



115. Peter MILTON (American, b. 1930) *Panorama I*. Lift-ground etching. Signed. 1963. Edition 22/35. Reference: Milton 30. 18 x 24 (plate), 19³/₈ x 26¹/₂ (sheet). [347460] \$2,500.



116. Peter MILTON (American, b. 1930) *Brueghelscape #1*. Lift-ground etching. Signed. 1964. Edition 23/50. Reference: Milton 34. 18 x 24 (plate), 19³/₄ x 25¹/₄ (sheet). [347461] \$2,500.



117. Hibiki MIYAZAKI (b. 1974) *Double Dutch Incident*. Intaglio. Signed. 2005. Edition 25/28. 16 x 22 (plate), c. 22 x 26 (sheet). [53941c] \$650. Also available framed.



119. Francisco MORA (Mexican, 1922–2002) *Standard Oil - Royal Death*. From *CTAL Portfolio (Confederación de los Trabajadores de América Latina)*. Linocut. Signed. 1948. Edition No. 3. Printed by Taller de Gráfica Popular. 8½ x 11¾ (block), 12 x 15⅞ (sheet). [53687] \$385.



120. Francis Luis MORA (Uruguayan / American, 1874–1940) *Ride Home*. Etching. Signed. 1931. Edition of 75. Faint blindstamp at lower left margin. 11¾ x 9¾ (plate), 15½ x 13⅞ (sheet). [53715c] \$675.



118. Yoshitoshi MORI (Japanese, 1898–1992) *Guardian God*. Stencil print. Signed. 1970. Unnumbered edition. 13½ x 9½ (image), 17⅞ x 12 (sheet). [53912c] \$450.



121. Yoshitoshi MORI (Japanese, 1898–1992) *Woman with Temari Ball*. Stencil print. Signed. 1970. Unnumbered edition. 15¼ x 10¾ (image), 17¾ x 11⅞ (sheet). [53913c] \$400.



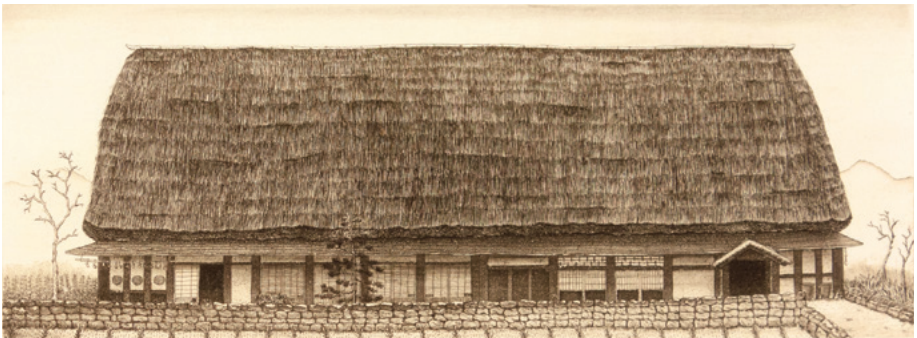
122. Judith MURRAY (American, b. 1941) *Lincoln Center Mozart Bicentennial*. Serigraph. Signed. 1991. Edition 10/72. MC blindstamp embossed at lower right corner of sheet. A few minor damages in the lower and left margins. Small 1/2" loss in white area at center of print. 32 x 35 (image), 42 1/8 x 39 1/2 (sheet). [53944c] \$800.



123. Kumi OBATA (Japanese, b. 1966) *Musical Score for the Sleepless 眠れない人のための楽譜*. Etching. Signed. Edition 3/15. 7 x 5 3/4 (plate), 11 1/8 x 9 1/2 (sheet). [346782] \$200.



124. Jackson Lee NESBITT (American, 1913–2008) *Wire Mill*. Etching. Signed. 1939. Edition 2/60. Reference: Relif & Salzman 15. Small loss at top edge of margin. 9 x 11 1/8 (plate), 11 1/2 x 13 3/4 (sheet). [53732c] \$1,500.



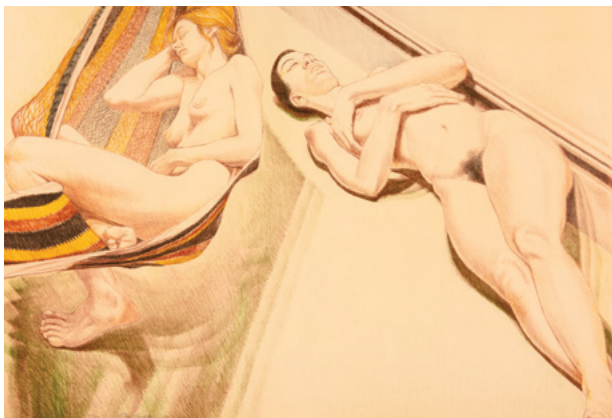
125. Hiroto NORIKANE (Japanese, b. 1949) *Big Roof*. Etching. Signed and sealed. 1982. Edition 28/200. 4 1/4 x 11 1/2 (plate), 7 1/2 x 15 1/2 (sheet). [53761c] \$300.



126. Wendy ORVILLE (American, b. 1962) *Long Beach*. Monotype. Signed. 2019. Edition 1/1. 9 x 6 (image), 15 x 11¼ (sheet). [342722] \$600.



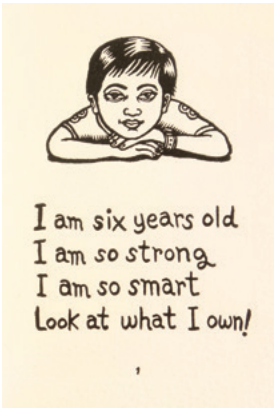
127. Leonard PYTLAK (American, 1910–1998) *Bonfire*. Lithograph. Signed. 1936/1939. Published by FAP/WPA, stamp at lower left. Provenance: Susan Teller Gallery, NY. 11 x 13¾ (image), 12¼ x 16 (sheet). [53716c] \$600.



128. Philip PEARLSTEIN (American, b. 1924) *Two Nudes with Hammock*. Color lithograph. Signed. 1974. Edition 60/100. Published by Landfall Press Inc. Chicago. 24¾ x 35½ (image/sheet). [46601c] \$1,100.



129. Kurt REGSCHEK (Austrian, 1923–2005) *Imaginary Landscape*. Etching. Signed. Edition 20/60. 3½ x 9½ (plate), 10¼ x 14½ (sheet). [47865c] \$160.



130. Artemio RODRÍGUEZ (Mexican, b. 1972) *The King of Things / El Rey de las Cosas*. Accordion book of 16 linocuts and text with end boards and a soft cover. Signed on the colophon. 2001. Edition 22/125. Printed and bound by Mario Rufino and the artist. 6 x 4 (each sheet). [342713] \$180 (complete book).



131. Marina RICHTEROVÁ (Czech, b. 1962) *King Lear, Act IV*. Etching. Signed. Edition 34/100. 13¾ x 8⅞ (plate), 18¾ x 12⅝ (sheet). [52496c] \$225.



132. Sven Birger SANDZEN (Swedish, 1871–1964) *Wild Horse Creek*. Lithograph on laid paper. Signed and dated in the stone. 1922. Edition of 50. Unidentified watermark. Reference: Greenough 67. Small tear in outer edge of top margin. 12 x 18 (image), 15½ x 22½ (sheet). [49167] \$700.



133. Sven Birger SANDZEN (Swedish, 1871–1964) *Smokey River*. Lithograph on laid paper. Signed. Initialed in the stone. 1921. Edition of 50. Unidentified watermark. Reference: Greenough 61. 12 x 18 (image), 15½ x 22½ (sheet). [49168] \$750.



134. Irving K. SAMUELS (American, 1896–1981) *Plum Beach*. Wood engraving. Signed. 1936/1939. Edition of c. 25. Published by FAP/WPA, stamp at lower left. Provenance: Susan Teller Gallery, NY. 8 x 11 (block), 12 x 15¼ (sheet). [53717c] \$525.



135. Rudolf Herbert SCHLINGENBUCH (German, 1877–1934) *Iron Works, Rolling Machineries*. Soft ground etching. Signed. Edition 2/100. 12¾ x 15 (plate), 17½ x 19½ (sheet). [45673c] \$750.



136. Shima SEIEN (Japanese, 1893–1970) *Woman with Purple Hair Scarf*. From *Dai Chikamatsu Hanga Zenshu*. Color woodblock. Date of Impression 1923. Carved by Yamagishi Kazue (1893–1966). Printed by Nishimura Kumakichi. 15¼ x 10 (blocks), 18 x 11⅞ (sheet). [24693c] \$950.



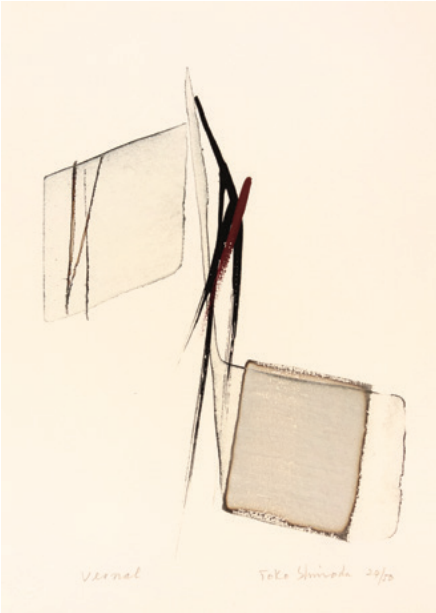
137. Jenny SCHMID (American, b. 1969) *The Lost Year*. Screenprint. Signed. 2021. Edition 3/15. 15¼ x 11 (image), 17½ x 13 (sheet). [346734] \$200.



138. Georges SCHREIBER (Belgian / American, 1904–1977) *Noon*. Lithograph. Signed. 1939/1942. Edition of 250. Published by AAA, label included. $9\frac{3}{8} \times 13\frac{1}{8}$ (image), $12\frac{1}{2} \times 17$ (sheet). [53718c] \$600.



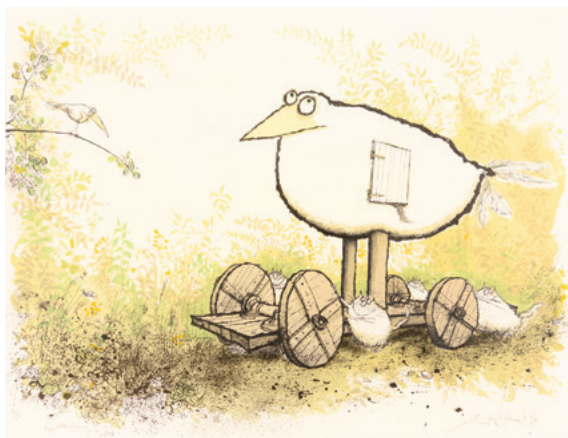
139. Georges SCHREIBER (Belgian / American, 1904–1977) *Southern Siesta*. Lithograph. Signed. 1939/1942. Edition of 218. Published by AAA. $8\frac{7}{8} \times 11\frac{1}{8}$ (image), $11\frac{7}{8} \times 16\frac{1}{8}$ (sheet). [53719c] \$600.



140. Toko SHINODA (Japanese, 1913–2021) *Vernal*. Lithograph with brush strokes added. Signed. Edition 24/50. Printed by K. Kimura, blindstamp lower left margin. $11\frac{3}{4} \times 8\frac{3}{4}$ (image), $15 \times 11\frac{1}{8}$ (sheet). [53683c] \$2,800.



141. Toko SHINODA (Japanese, 1913–2021) *Verse*. Lithograph with brush strokes added. Signed. Edition 24/50. Printed by K. Kimura, blindstamp lower left margin. $12 \times 8\frac{3}{4}$ (image), $15 \times 11\frac{1}{4}$ (sheet). [53684c] \$2,800.



142. Ronald SEARLE (British, 1920–2011) *Happy Birthday to You*. Color lithograph. Signed. 1974. Edition 31/99. Printed by Michel Cassé Litho, Paris (Blindstamp left). Published by Edition RS, Paris (Blindstamp right). 28½ x 20½ (image/sheet). [347008] \$725.



143. Egor SHOKOLADOV (Belarusian, b. 1990) *Friends*. Etching. Signed. 2018. Edition AP II/XXX. 4¾ x 3⅞ (plate), 11¼ x 8¾ (sheet). [347467] \$300.



144. Lawrence Beall SMITH (American, 1902–1995) *Seaside Nomads*. Lithograph. Signed. 1941/1946. Edition of 250. Published by Associated American Artists. Faintly toned. 9⅞ x 13⅞ (image), 11¼ x 15⅞ (sheet). [53722c] \$325.



145. James Agrell SMITH (Canadian, 1913–1988) *Caribou Cowboy*. Wood engraving. Signed. Edition 39/50. Soft crease at upper right margin. 7¾ x 6 (block), 11 x 7¼ (sheet). [53038c] \$250.



146. Charles SPITZACK (American, b. 1987) *Flirting with Death*. Color woodcut. Signed. 2015. Edition 2/6 EV. 11¾ x 18 (blocks), 16 x 25 (sheet). [336124] \$300.



147. Théophile-Alexandre STEINLEN (Swiss-born, French, 1859–1923) *Entre deux trains (Time Between Two Trains)*. Etching and drypoint with remarque. Signed. Also signed and dated in the plate. 1916. Edition 63/100. Reference: Christophe 103. 10 x 13⁵/₈ (image), 14 x 17⁷/₈ (sheet). [53808c] \$310.



148. Théophile-Alexandre STEINLEN (Swiss-born, French, 1859–1923) *Chanson de route (A Song en Route)*. Lithograph. Signed. Signed and titled in the stone. 1916. Edition 51/100. Deluxe edition with remarque. Reference: Christophe 121. 18½ x 13½ (image with remarque), 22½ x 15 (sheet). [53793c] \$250.



149. Théophile-Alexandre STEINLEN (Swiss-born, French, 1859–1923) *On ne s'en fait pas*. Lithograph with remarque. Signed. Signed and dated in the stone. 1915. Edition 61/100. Preferred edition. Reference: Christophe 98A. 16 x 11³/₈ (image with remarque), 22¹/₈ x 15 (sheet). [53796c] \$210.

150. Rebecca STRABO (American, b. 1958) *North Sea Island II*. Monotype. Signed. 2021. Edition 1/1. 15 $\frac{3}{4}$ x 15 $\frac{1}{8}$ (image), 22 $\frac{1}{8}$ x 19 $\frac{1}{4}$ (sheet). [347353] \$385.



151. William STRANG (Scottish, 1859–1921) *The Place of the Easterlings, Bruges*. Etching. Signed. 1899. Final state. Printed by and also signed by David Strang. Reference: Strang 463. 7 x 6 $\frac{7}{8}$ (plate), 9 $\frac{3}{8}$ x 8 (sheet). [52118c] \$325.



152. William STRANG (Scottish, 1859–1921) *His Rimmer Staff Waved He*. Etching. Signed. 1892. Reference: Strang 248 v. 7 $\frac{7}{8}$ x 6 $\frac{7}{8}$ (plate), 14 $\frac{1}{2}$ x 9 $\frac{1}{8}$ (sheet). [52113c] \$200.



153. William STRANG (Scottish, 1859–1921) *Adam Taught it to His Sons*. Illustration for *The Compleat Angler* by Izaak Walton. Etching. Initialed in the plate. 1902. Final state. Reference: Strang 526. 6 $\frac{7}{8}$ x 4 $\frac{1}{2}$ (plate), 8 $\frac{3}{8}$ x 5 $\frac{3}{4}$ (sheet). [43478c] \$165.



154. William STRANG (Scottish, 1859–1921) *Mother Earth*. Etching and aquatint. Signed. 1897. Final state. Printed by and also signed by David Strang. Reference: Strang 406. 7 $\frac{7}{8}$ x 5 $\frac{1}{8}$ (plate), 10 $\frac{1}{8}$ x 7 $\frac{1}{8}$ (sheet). [52112c] \$225.



155. Carol SUMMERS (American, 1925–2016) *Rainy Mountain Starfall*. Woodcut. Signed. 1975. Proof. Reference: Summers 124. 36 x 37 (image/sheet). [343693] \$5,500.



156. Carol SUMMERS (American, 1925–2016) *Phewa Tal*. Color woodcut. Signed. 1978. Proof. Reference: Summers 153. 12 x 16 (image/sheet). [343951] \$1,000.



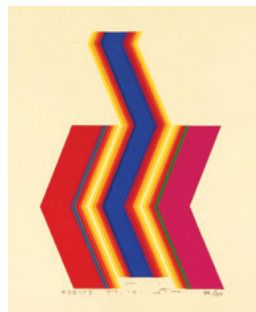
157. Carol SUMMERS (American, 1925–2016) *Swedegon*. Woodcut. Signed. 2002. Edition 39/100. Reference: Summers 237. 12 x 12 (image/sheet). [340929] \$600.



158. Carol SUMMERS (American, 1925–2016) *Fire*. Woodcut. Signed. 2001. Edition 89/100. Reference: Summers 234. 14 x 14 (image/sheet). [340930] \$600.



159. Carol SUMMERS (American, 1925–2016) *The Bighorn at Night*. Woodcut. Signed. 1971. Edition 13/50. Reference: Summers 105. 49 x 31 (image/sheet). [51308c] \$4,800.



160. Humio (Fumio) TOMITA (Japanese, b. 1934) *Unknown Title (Stripe)*. Color serigraph. Signed. Edition 102/130. 5½ x 4 (image), 7¼ x 7¼ (sheet). [53666] \$150.

A recently acquired selection of serigraphs by Humio Tomita is now available at the gallery. Visit the artist's page on our website to see the full selection.



161. Ryohei TANAKA (Japanese, 1933–2019) *Snow is Coming No. 2*. Etching and aquatint. Signed. 1980. Edition 62/120. Reference: Corman 261. 15¼ x 9¼ (plate), 167/8 x 10½ (sheet). [53754c] \$1,200.



162. Ryohei TANAKA (Japanese, 1933–2019) *Water Side No. 1*. Etching and aquatint. Signed. 1977. Edition 21/100. Reference: Corman 203. 8¼ x 9¼ (plate), 12 x 13 (sheet). [347167] \$650.



163. Ernest TROVA (American, 1927–2009) *Untitled*. From *Falling Man Series*. Color serigraph. 1969. Edition 94/175. Printed by Fine Creations, Inc. Published by Pace Editions, Ltd. 25 x 25 (image), 27⁷/₈ x 27⁷/₈ (sheet). [53701c] \$475. Also available framed.



164. Carl THIEMANN (German, 1881–1966) *Schwan I*. Color woodcut. Monogram and date at upper left. Published state with typography along bottom margin edge. 1907. Reference: Merx 81. 7³/₄ x 11³/₄ (blocks), 11¹/₄ x 15³/₄ (sheet). [53595c] \$550.



165. Robert VON NEUMANN (German, 1888–1976) *Island's Mailboat*. Lithograph. Signed. 1950. 7⁷/₈ x 10⁵/₈ (image), 12 x 16 (sheet). [53726c] \$285.



166. Moira WALLACE (American, 1910–1979) *Family*. Lithograph. Signed. 1937. Provenance: Federal Art Project of California. 12 x 8½ (image), 17 x 12¼ (sheet). [53727c] \$325.



167. George C. WALES (American, 1868–1940) *Round Cape Horn*. Etching. Signed. 1923. Edition of 53. 11¾ x 8¾ (plate), 16¾ x 12¾ (sheet). [49014c] \$325.



168. Sadao WATANABE (Japanese, 1913–1996) *St. Francis*. Color stencil on momigami paper. Signed. 1981. Edition 74/100. 18½ x 17⅞ (image), 22¾ x 17¼ (sheet). [53760c] \$2,000.



169. Lynd WARD (American, 1905–1985) *Seedling*. Wood engraving. Signed. 1949. 8 x 6 (block), 12 x 10⅞ (sheet). [53729c] \$600.



170. Lynd WARD (American, 1905–1985) *Clouded Over*. Wood engraving. Signed. 1948. 6 x 9 (block), 9⁵/₈ x 13¹/₈ (sheet). [53728c] \$900.



171. Carol WAX (American, b. 1953) *SPiGot*. Carborundum mezzotint and Burin engraving. Signed. 2019. Edition 4/25. 3¹/₂ x 3¹/₂ (plate), 7¹/₄ x 7³/₄ (sheet). [346804] \$175.



172. Peter UCHNAR (Slovak, b. 1970) *Manipulator*. Wood engraving. Signed. 1997. Edition 9/20. 17¹/₂ x 10¹/₂ (block), 20⁵/₈ x 12³/₄ (sheet). [20000] \$525.



173. Mikio WATANABE (Japanese, b. 1954) *Hesitation*. Mezzotint. Signed. Edition 86/90. 5 x 7³/₄ (plate), 11¹/₄ x 15 (sheet). [347036] \$600.



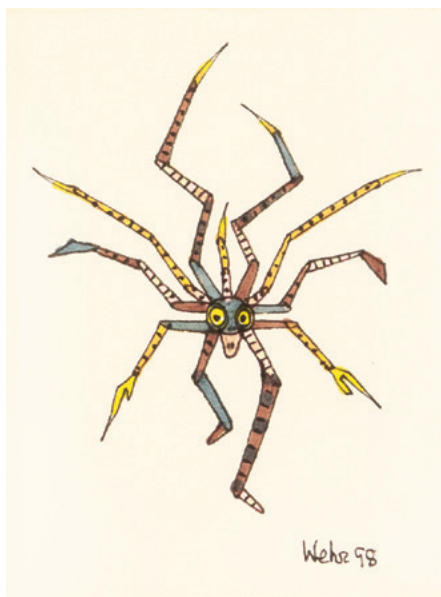
174. Wesley WEHR (American, 1929–2004) *Imaginary Figure (Pointing)*. Ink drawing. Signed. 1998. $4\frac{1}{2} \times 1\frac{3}{4}$ (image), $6\frac{3}{8} \times 4\frac{3}{4}$ (sheet). [53958c] \$200. Also available framed.



175. Wesley WEHR (American, 1929–2004) *Imaginary Figure (In a Box)*. Ink drawing. Signed. 1998. $6\frac{3}{8} \times 4\frac{5}{8}$ (image/sheet). [53959c] \$275. Also available framed.



176. Andreas Paul WEBER (German, 1893–1980) *Auf Der Schaukel (On the Swing)*. Lithograph. Estate stamp verso. 1980. $13\frac{1}{2} \times 10\frac{1}{2}$ (image), $25\frac{1}{4} \times 20\frac{1}{8}$ (sheet). [47096] \$175.



177. Wesley WEHR (American, 1929–2004) *Imaginary Figure (with Extra Limbs)*. Ink drawing. Signed. 1998. $3\frac{3}{8} \times 2\frac{3}{4}$ (image), $4\frac{1}{4} \times 3\frac{3}{4}$ (sheet). [53960c] \$185. Also available framed.



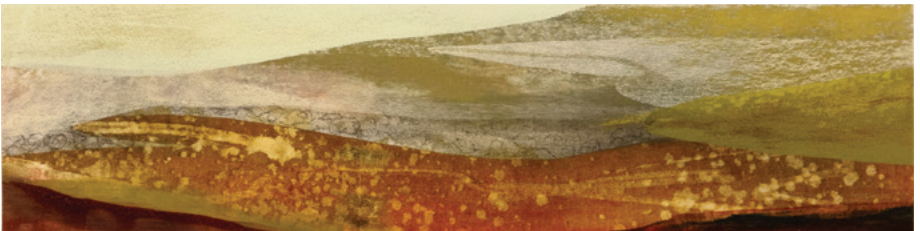
178. Harry WICKEY (American, 1892–1968) *Boy Drawing*. Illustrated in artist's autobiography, *Thus Far*. Etching. Signed. Edition of 100 proofs (noted in pencil). Provenance: Susan Teller Gallery, NY. 8⁷/₈ x 11⁷/₈ (plate), 10¹/₂ x 13³/₈ (sheet). [53730c] \$250.



179. Paul WUNDERLICH (German, 1927–2010) *Untitled*. Loose drypoint that accompanies the deluxe edition of the bound book, *Kaltnadel Drypoint seche*. The drypoint is signed and numbered. Date of Plate 2000. Edition 30/50. 4³/₄ x 3 (plate), 7³/₄ x 5¹/₂ (sheet). [44436] \$325.



180. Ossip ZADKINE (1890–1967) *La Musique*. Color lithograph. Signed. 1965. Epreuve d'Artiste. Edition of 75. Reference: Czwiklitzer 134. 11¹/₄ x 8³/₄ (image), 17¹/₈ x 14 (sheet). [53629Bc] \$350.



181. Dion Pickering ZWIRNER (American, b. 1947) *Landforms 2*. Mixed media on paper. Signed. 2021. 4¹/₈ x 16 (image), 15 x 22 (sheet). [347458] \$875.



182. Dion Pickering ZWIRNER (American, b. 1947) *Fall Thicket*. Mixed media on paper. Signed. 2021. 4 $\frac{1}{8}$ x 16 (image), 15 x 22 (sheet). [347459] \$875.

CATALOG LIST NO. 104–FALL 2021

CONTACT: Rebecca McDonald, (206) 624-7684
or rebecca@dauidsongalleries.com

An additional impression may be available for certain works. Listed prices apply to the impression shown. Prices may vary for additional impressions. All items are guaranteed as described. Certificate of authenticity is available upon request. Please contact the gallery with questions or to discuss a work in detail. **All dimensions are given in inches, height precedes width.** Orders are shipped promptly upon receipt of full payment. Works are normally shipped insured via UPS unless other arrangements are specified. Shipping charges vary and are dependent on size and value of items ordered. Washington State residents must add appropriate sales tax. Items may be sent “on approval” beginning two weeks after initial catalog release. Works may be returned to the gallery for any reason within two weeks of purchase for a full refund less shipping. Returned works should be securely packed and fully insured.

Please inform the gallery of any special collecting interests. Davidson Galleries is willing to consider purchasing or consigning fine original prints individually or as collections.

Davidson Galleries is a charter member of the **International Fine Print Dealers Association** and is committed to its strict ethical standards.

IFPDA MEMBER

DOWNLOADABLE CATALOGS AVAILABLE

As part of our commitment to produce less waste, we are proud to offer our catalogs as downloadable PDFs through **dauidsongalleries.com**. Visit the publications page on the website to download free of charge.

If you would prefer to continue receiving our semi-annual printed catalogs by mail, **annual subscriptions are available for \$12**, deductible from your first catalog purchase. Please contact the gallery for details.



Join our bi-monthly
email newsletter!

DAVIDSON GALLERIES

313 Occidental Avenue South | Seattle, Washington 98104
www.davidsongalleries.com | Open Tuesday-Saturday 11-5:30

CHANGE SERVICE REQUESTED

CATALOG LIST NO. 104—FALL 2021



183. Werner DREWES (German / American, 1899–1985) *Northern Transition*. Color woodcut on cream Japanese paper. Signed. 1942. Edition 4/XX. Reference: Rose 110. 11¹/₈ x 18 (blocks), 12¹/₄ x 18¹/₂ (sheet). [53945c] \$2,800. Also available framed.

\$6.00