

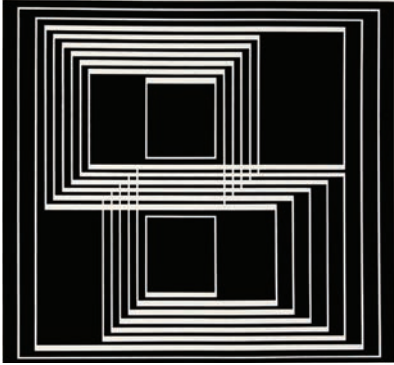


13/
/60

Somebody Stole My Broken Heart Mark Blyggard 2011

DAVIDSON GALLERIES

COVER IMAGE: Faith RINGGOLD (American, b. 1930) *Somebody Stole My Broken Heart*. Serigraph. Signed. 2007. Edition 45/60. 22⁵/₈ x 18 ³/₄ (image), 30 x 22¹/₄ (sheet). [53297] \$3,600.



1. Josef ALBERS (German-born, American, 1888-1976) *Portfolio I, Folder 33*. From *Formulation: Articulation Portfolio*. Serigraph. 1972. Published by Harry N. Abrams Inc. & Ives-Sillman, Inc. 11¹/₄ x 11⁵/₈ (image), 15 x 20 (sheet). [51340] \$1,000.



2. Tetsuo AOKI (Japanese, b. 1940) *People • 16*. Woodblock. Signed. Edition of 35. 7¹/₂ x 7¹/₂ (blocks), 10³/₄ x 10 (sheet). [346434] \$225.



3. Tetsuo AOKI (Japanese, b. 1940) *Two People Pointing*. Woodblock. Signed. Edition of 30. 8 x 8 (blocks), 11¹/₂ x 10³/₄ (sheet). [346436] \$185.



4. Tetsuo AOKI (Japanese, b. 1940) *Heated Discussion*. Woodblock. Signed. 2003. Edition of 30. 18³/₈ x 31 (blocks), 23 x 34¹/₄ (sheet). [335957] \$1,100.



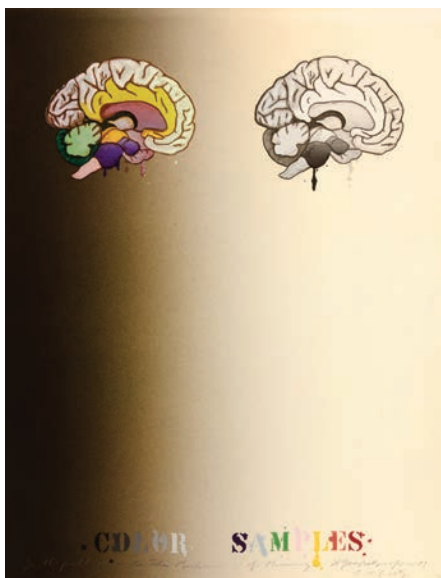
5. Karel APPEL (Dutch, 1921-2006) *Sunshine Cat*. From *Cats Suite*. Color lithograph on Arches. Signed. 1978. Edition 7/125. Printed by Perrin, Paris. Published by Lerum Arts and London Arts Inc. 22 x 30 (image), 24¾ x 32⅛ (sheet). [53577c] \$650.



6. Karel APPEL (Dutch, 1921-2006) *Sad Cat*. From *Cats Suite*. Color lithograph on Arches. Signed. 1978. Edition HC V/XV. Printed by Perrin, Paris. Published by Lerum Arts and London Arts Inc. 22¼ x 30 (image), 24¾ x 32⅛ (sheet). [53579c] \$650.



7. Charles ARNOLDI (American, b. 1946) *Machu Picchu 2*. Woodblock. Signed. 2019. Edition 4/30. Printed by Thumbprint Editions, London. Published by Harvey Bayer Fine Art. 16¼ x 22½ (blocks), 24½ x 30¼ (sheet). [344967] \$1,600.



8. Shusaku ARAKAWA (Japanese, 1936-2010) *Color Samples No. 2*. From *The Mechanism of Meaning*. Color lithograph. Signed. 1979. Edition 10/30. Stamp at lower left corner, two blindstamps. Published by Topaz Editions Inc., Tampa. 30 x 23¾ (image/sheet). [53521c] \$2,000.



9. Charles ARNOLDI (American, b. 1946) *String Theory 1*. Etching. Signed. 2016. Edition 32/45. Printed by Peter Kosowicz. Published by Thumbprint Editions, London. 32 x 27 (image), 40½ x 34½ (sheet). [334996] \$2,800.



10. Mio ASAHI (Japanese, b. 1957) *Those Who Leave and Those Who See Off*. Etching and aquatint. Signed. Edition of 35. 13¾ x 19½ (image), 20 x 26 (sheet). [344752] \$380.



11. Mio ASAHI (Japanese, b. 1957) *The Banks of the River Phantom*. Etching and aquatint. Signed. 2014. Edition of 35. 23½ x 15¾ (image), 30 x 21¾ (sheet). [330926] \$450.



12. Umetaro AZECHI (Japanese, 1902-1999) *Calling to the Mountain*. Color woodblock. Signed. 1956. 15 $\frac{1}{4}$ x 9 $\frac{1}{2}$ (blocks), 16 $\frac{5}{8}$ x 11 $\frac{3}{4}$ (sheet). [53269c] \$750.



13. Umetaro AZECHI (Japanese, 1902-1999) *Snow Child*. Color woodblock. Signed. 15 $\frac{3}{8}$ x 10 (blocks), 17 x 11 (sheet). [53267c] \$750.



14. Umetaro AZECHI (Japanese, 1902-1999) *Village Landscape*. Color woodblock. Signed. 10 $\frac{5}{8}$ x 15 $\frac{3}{8}$ (blocks), 12 $\frac{1}{4}$ x 17 (sheet). [53264c] \$800.



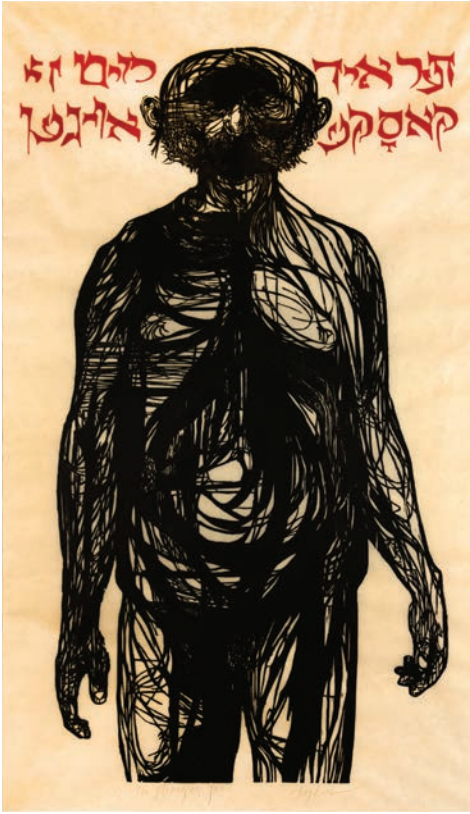
15. Michael BARNES (American, b. 1969) *Im Garten*. From *Steindruck München*. Lithograph. Signed. 2020. Edition of 12. 17 x 19 $\frac{3}{4}$ (image), 19 $\frac{3}{8}$ x 22 $\frac{3}{8}$ (sheet). [346364] \$900.



16. Paula BARRAGÁN (Ecuadorian, b. 1963) *Niña de la Suerte*. Intaglio with chine-collé. Signed. Edition of 50, EV. 7 $\frac{3}{4}$ x 7 $\frac{3}{4}$ (image), 14 $\frac{1}{4}$ x 14 $\frac{1}{8}$ (sheet). [345643] \$450.



17. Hans BELLMER (German, 1902-1975) *Untitled*. From *Petit Traité de Morale Suite*. Engraving and drypoint on Japon Nacré. Signed. 1968. Edition of 150. Reference: Denoël 84. Published by Editions Georges Visat, Paris. 11 x 8 $\frac{3}{8}$ (plate), 15 x 11 $\frac{1}{8}$ (sheet). [51533] \$640.



18. Leonard BASKIN (American, 1922-2000) *The Strabismic Jew*. Woodcut in black with red lettering. Signed. 1955. Reference: Fern 259. 40¼ x 22½ (image), 45 x 24½ (sheet showing). [25611c] \$1,500. Also available framed.



19. Leonard BASKIN (American, 1922-2000) *Beachscape*. Etching and aquatint. Signed. 1963. Edition 127/200. Reference: Fern 438. Published by International Graphic Arts Society (IGAS), New York. 17½ x 14¾ (plate), 21½ x 17¾ (sheet). [53286c] \$425.



20. Leonard BASKIN (American, 1922-2000) with **Ben SHAHN** (American, 1898-1969) *Beatitudes*. Wood engraving. Signed by both Baskin and Shahn. 1955. Edition of 400. Reference: Fern 251, Prescott 72. Publication #21 by IGAS, New York. Toned verso. 10 x 15 (block), 16 x 21 (sheet). [53282c] \$450.



21. Ben BERES (American, b. 1976) *Gibberish*. Marbled monoprint. Signed verso. 2021. Edition 1/1. 15³/₈ x 11¹/₄ (image/sheet). [346584] \$375.



22. Ben BERES (American, b. 1976) *Conscious*. Marbled monoprint. Signed verso. 2021. Edition 1/1. 15 x 11¹/₈ (image/sheet). [346590] \$375.



23. Ben BERES (American, b. 1976) *Always You*. Drypoint. Signed. 2017. Edition of 5. 3 x 15 (image), 7⁵/₈ x 22¹/₂ (sheet). [338184] \$200.



24. Jacques CALLOT (French, 1592-1635) *The Peasant Removing his Shoes (Le Paysan se Déchaussant)*. From *Les Caprices*, the Nancy Set. Etching. Collector's mark, verso. Reference: Lieure 457 i/ii. Thread margins. 2 $\frac{1}{8}$ x 3 $\frac{1}{4}$ (image/shheet). [24268] \$350.



25. Jacques CALLOT (French, 1592-1635) *The Violin Player (Le Joueur de Violon)*. From *Les Caprices*. Etching. Reference: Lieure 440 i/ii, Meaume 793. Toned at outer edge of $\frac{1}{4}$ -inch margins. 2 $\frac{1}{4}$ x 3 $\frac{5}{8}$ (image). [29927c] \$385.



26. Jim DINE (American, b. 1935) *Self Portrait, Hand-Painted in Paris*. Etching, drypoint and electric tools with hand-coloring on Arches aquarelle paper. Signed. 1979. Edition 20/25. Printed by Atelier Crommelynck, Paris. Published by Pace Editions, New York. 6 $\frac{1}{4}$ x 5 $\frac{3}{8}$ (plate), 17 $\frac{3}{4}$ x 14 $\frac{3}{4}$ (sheet). [53047c] \$1,500. Also available framed.



27. Marit BERG (American, b. 1966) *Baby Jack*. Linocut. Signed. 2020. Edition of 50. 13 $\frac{1}{8}$ x 18 (image), 17 $\frac{1}{2}$ x 22 $\frac{1}{4}$ (sheet). [345823] \$375.



28. **Georges BRAQUE** (French, 1882-1963) *Soleil et Lune I*. Color lithograph. Signed. 1959. Edition 237/275. Reference: Maeght 1034, Vallier 295. Published by Editions Maeght, Paris. Provenance: Otto Seligman Gallery, Seattle. $8\frac{1}{2} \times 3\frac{3}{4}$ (image), $11\frac{1}{8} \times 5\frac{5}{8}$ (sheet). [53299c] \$1,500.



29. **Lovis CORINTH** (German, 1858-1925) *Delight in Living (Freude am Leben)*. Drypoint. Edition 2/60. Reference: Schwarz 403. Printed by Wohlgemut and Lissner, Berlin. $8\frac{1}{2} \times 11\frac{3}{4}$ (image), 10 x 13 (sheet showing). [51137c] \$485. Also available framed.



30. **Marc CHAGALL** (Russian / French, 1887-1985) *White on Black (Blanc sur Noir)*. Lithograph on Arches wove paper. Signed. 1972. Edition 20/30. Reference: Sorlier/Mourlot 682. Published by Editions Maeght, Paris. $22 \times 14\frac{7}{8}$ (image), $26\frac{1}{2} \times 19\frac{3}{8}$ (sheet). [53042c] \$2,800.



31. **Joseph CORNELL** (American, 1903-1972) *Les Alarmes des Chattes*. Collage. Signed. 1969. $11\frac{1}{4} \times 7\frac{1}{4}$ (collage), $13\frac{3}{8} \times 11\frac{5}{8}$ (frame, integral to the piece). [48150c] \$32,000.



32. Albrecht DURER (German, 1471-1528) *Christ Among the Doctors*. From *The Life of the Virgin*. Woodcut. Date of Block c. 1503. Date of Impression Mid-16th century. Collector's stamp (Lugt 2009) verso, Fürst Karl Paar (1772-1819). Partial watermark at top. Reference: Straus 77, Meder 203. Various stains, hinge residue, faint foxing, re-margined, pencil notations verso. 11 $\frac{5}{8}$ x 8 $\frac{1}{4}$ (image), 12 $\frac{1}{8}$ x 8 $\frac{5}{8}$ (sheet). [48289c] \$3,200.



33. Andy ENGLISH (English, b. 1956) *Serious Bear*. Wood engraving. Signed. Edition of 125. 4 x 3 (image), 10 $\frac{1}{2}$ x 7 $\frac{1}{8}$ (sheet). [345927] \$80.



34. Andy FARKAS (American, b. 1975) *Beauty of the Moment*. Moku hanga woodcut. Signed. Edition of 72. 11 x 8 (image), 12 $\frac{1}{4}$ x 9 (sheet). [346700] \$300.



35. Thomas GIRTIN (English, 1775-1802) *A View of East Farley, Kent*. Watercolor. 1881. Some toning and fading, light foxing. 9 x 15 (painting). [323348] \$2,800. Original frame included.



36. Léonard Tsuguharu FOUJITA (Japanese / French, 1886-1968) *Jeune Fille et Enfant à la Baguette et au Pot au Lait*. Lithograph. Signed. c. 1960. Edition of 120. 12¾ x 11 (image), 22 x 15 (sheet). [47858] \$1,250.



37. Ernst FUCHS (Austrian, 1930-2015) *Island of the Dead*. Color etching. Signed. Edition 94/200. 19½ x 13½ (image), 27½ x 19½ (sheet). [20230] \$865.



38. R. C. GORMAN (Native American, Navajo, 1932-2005) *Rainbow*. Color lithograph. 1993. Edition 153/175. Houston Fine Art Press 1993 stamp, two additional blindstamps. 21 x 26 (image/sheet). [53522c] \$1,000.



39. R. C. GORMAN (Native American, Navajo, 1932-2005) *Taos Traders*. Color lithograph. 1985. Edition 187/224. 26 x 36 (image/sheet). [53523c] \$1,100.



40. R. C. GORMAN (Native American, Navajo, 1932-2005) *Earth Mother*. Color lithograph. 1991. Edition 187/224. 29½ x 37½ (image/sheet). [53524c] \$1,250.



41. Francisco GOYA (Spanish, 1746-1828)
No Grites, Tonta (*Don't Scream, Stupid*). Plate 74 for *Los Caprichos*. Etching and aquatint. 1905/1907. 8th edition, 180 printed. Reference: Harris 109. $8\frac{3}{8} \times 5\frac{3}{4}$ (plate), $12\frac{1}{4} \times 9\frac{1}{4}$ (sheet). [51756c] \$825.



42. Francisco GOYA (Spanish, 1746-1828)
Ya van desplumados (*There They Go Plucked*). Plate 20 for *Los Caprichos*. Etching and aquatint. 1905/1907. 8th edition, 180 printed. Reference: Harris 55 iii. Sheet trimmed. $8\frac{1}{2} \times 5\frac{7}{8}$ (plate), $12\frac{1}{8} \times 8$ (sheet). [51757c] \$785.



43. Francisco GOYA (Spanish, 1746-1828)
Aquellas polvos (*Those Specks of Dust*). Plate 23 for *Los Caprichos*. Etching and aquatint. 1929. 11th edition, 100 printed. Goya with hat watermark. Reference: Harris 58 iii. $8\frac{1}{2} \times 5\frac{3}{4}$ (plate), $11 \times 7\frac{3}{8}$ (sheet). [51758c] \$750.



44. Francisco GOYA (Spanish, 1746-1828) *Mejor es holgar* (It is Better to be Lazy). Plate 73 for *Los Caprichos*. Etching and aquatint. Later edition. Reference: Harris 108 iii. $8\frac{3}{8} \times 5\frac{7}{8}$ (plate), $11\frac{1}{4} \times 8\frac{1}{2}$ (sheet). [51759c] \$750.



46. Francisco GOYA (Spanish, 1746-1828) *Esopo el Fabulador* (Aesop the Fabricator). Etching on wove paper. Date of Impression 1868. Small edition. Printed by Calcografía. Reference: Harris 13 iii. Repaired tear top left margin corner. $11\frac{1}{2} \times 8\frac{3}{8}$ (plate), $17\frac{3}{4} \times 12\frac{1}{2}$ (sheet). [51790c] \$725.



45. Francisco GOYA (Spanish, 1746-1828) *Si quebró el cántaro* (If He Broke the Pot). Plate 25 for *Los Caprichos*. Etching and aquatint. 1905/1907. 8th edition, 180 printed. Printed by Calcografía. Reference: Delteil 62 iii, Harris 60 iii. $8\frac{1}{8} \times 5\frac{7}{8}$ (plate), $12\frac{7}{8} \times 9\frac{7}{8}$ (sheet). [51760c] \$675.



47. Phil GREENWOOD (Welsh, b. 1943) *Amber Light*. Etching and aquatint. Signed. Edition of 150. $12\frac{3}{8} \times 13\frac{3}{4}$ (plate), $19\frac{1}{2} \times 20\frac{1}{2}$ (sheet). [345860] \$300.



48. Yozo HAMAGUCHI (Japanese, 1909-2000) *One Cherry*. Color mezzotint. Signed. 1962. Edition 41/50. Reference: Miki 80. Very faintly toned around image, slightly faded. $13\frac{1}{2} \times 11\frac{1}{2}$ (plate), $22\frac{1}{4} \times 15$ (sheet). [53564c] \$2,200.



49. Childe HASSAM (American, 1859-1935) *Fifth Avenue, Noon*. Etching. Signed in pencil with monogram. 1916. Edition of approx. 20. Reference: Clayon-Cortissoz 77 ii/ii. Provenance: The Milch Galleries, New York. Usual stretch/drying holes at all margin edges. $9\frac{7}{8} \times 7\frac{1}{4}$ (plate), $12\frac{1}{8} \times 10$ (sheet). [51893c] \$7,800.



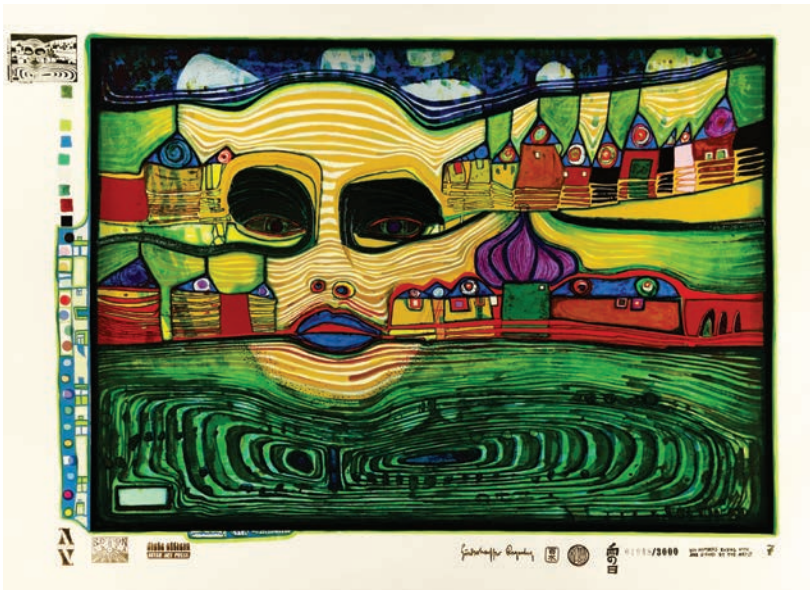
50. Stanley William HAYTER (English, 1901-1988) *Danae*. Viscosity color etching. Signed. 1954. Edition 25/95. Faint toning around the image. 16×12 (plate), $25\frac{1}{2} \times 19\frac{1}{2}$ (sheet). [53562c] \$3,000.



51. Seiichi HIROSHIMA (Japanese, b. 1950) *Hawk - Hum*. Mezzotint. Signed. 2020. Edition of 6. 4 x 8 (plate), 10 x 11 (sheet). [345944] \$350.



52. Utagawa HIROSHIGE I (Japanese, 1826-1869) *Crowd at the Year-End Market at Kannon Temple in Asakusa*. From *Famous Places in the Eastern Capital (Toto Meisho)*. Color woodblock. 1832-1834. Some soiling in margins. Oban. 9 x 13⁵/₈ (blocks), 10¹/₈ x 15 (sheet). [52515c] \$1,800.



53. Friedensreich HUNDERTWASSER (Austrian, 1928-2000) *Irialand over the Balkans*. Plate 7 for *Regentag Portfolio*. Color serigraph with foil stamps. 1971. Edition 01948/3000. Reference: Koschatzky 50. Archival hinge residue verso. 16 x 23 (image), 19³/₈ x 26¹/₄ (sheet). [52561c] \$3,000.



54. Sister Mary Corita KENT (American, 1918-1986) *Apocalypse*. Silkscreen. Signed. 1958. 21⁷/₈ x 30¹/₄ (image), 24 x 33 (sheet). [47891c] \$2,200.

A Sister Mary Corita Kent exhibition at Davidson Galleries is planned for Fall 2021.



55. Koji IKUTA (Japanese, b. 1953) *Red-Flanked Blue Tail*. Color mezzotint. Signed. 2017. Edition of 75. 8 x 5 (plate), 12⁵/₈ x 9¹/₄ (sheet). [345992] \$300.



56. Rockwell KENT (American, 1882-1971) *Starry Night*. Wood engraving. Signed. 1933. Edition of 1,750. Reference: Burne-Jones 103. 7 x 5 (block), 8 x 6 (sheet showing). [53046c] \$1,200. Also available framed.

57. Peter ILSTED (Dutch, 1861-1933) *On a Rainy Day (An Einem Regentag)*. Color mezzotint with chine-collé. Signed. c. 1931. Very faint printer's crease at lower center of image. Rich impression with strong colors. 16 x 19¹/₂ (plate), 21 x 24¹/₂ (sheet). [46104] \$2,100.





58. Seoul KIM (Korean, b. 1983) *Bus*. Color etching with chine-collé and hand coloring. Signed. 2017. Edition of 20. 15 x 19½ (image), 21 x 25¼ (sheet). [346646] \$500.



59. Yasuo KUNIYOSHI (Japanese / American, 1893-1953) *Four Nudes (Café on the Boulevard Clichy)*. Lithograph on chine appliqué on Arches. Signed. 1928. The Downtown Gallery stamp, verso. Reference: Davis L-28. Printed by Desjobert, Paris. 9¼ x 13¼ (image), 12¾ x 19⅝ (sheet). [53565c] \$3,800.



60. Käthe KOLLWITZ (German, 1867-1945) *The Prisoners (Die Gefangenen)*. Plate 7 for *The Peasants' War (Bauernkrieg)*. Etching, drypoint, softground, with fabric impression. Posthumous impression. Blindstamp at lower right corner. Reference: Klipstein 98, Hinz 42, Knesebeck 102. Published by Alexander von der Becke. 13 x 16¾ (image), 18⅝ x 24½ (sheet). [53563c] \$985.



61. Michèle LANDSAAT (American, b. 1968) *Knitting (Red flower variation)*. Etching with chine-collé and collage. Signed. 2020. Edition of 9, EV. 5 x 12 (image), 11 x 15 (sheet). [346141] \$250.



63. RIGHT: Jean-Luc LE BALP (French, b. 1961) *Baranco 24*. Color etching. Signed. Edition of 40. 11¾ x 11¾ (image), 15¾ x 15¾ (sheet). [346628] \$720.

64. LEFT: Jean-Luc LE BALP (French, b. 1961) *Baranco 9*. Color etching. Signed. 2013. Edition of 30. 38¾ x 7¼ (image), 44 x 12 (sheet). [346626] \$960.



62. Shiro KASAMATSU (Japanese, 1898-1991) *Fishing Boat*. Color woodblock. Early printing by Mikumo. Oban. 14¾ x 9½ (blocks), 15⅞ x 10¾ (sheet). [53220c] \$325.





65. **Martin LEWIS** (American, 1881-1962) *Corner Shadows*. Etching. Signed. 1930. Reference: McCarron 83. Printed for The Print Club of Cleveland. 8¼ x 8⅞ (plate), 11 x 12⅜ (sheet). [53070] \$12,000.



66. **Rico LEBRUN** (Italian / American, 1900-1964) *Rooster*. Charcoal drawing. Signed. 1950. 30 x 40 (image), c. 31 x 41 (sheet). [47857c] \$4,800. Also available framed.



67. Helen LOGGIE (American, 1895-1976) *Shuksan in Winter*. Etching. Signed. 1938. Third state. 8 x 10 (plate), 11 x 13½ (sheet). [53304c] \$1,500.



68. Helen LOGGIE (American, 1895-1976) *The King Goblin*. Etching. Signed. 1939. Second state. 9 x 12½ (plate), 11¾ x 15 (sheet). [53305c] \$2,000.



69. Norman LUNDIN (American, b. 1938) *Rabbit*. Mixed media drawing. Signed. 1960s. 9½ x 14 (sheet showing), 21 x 25 (framed). [53592c] \$2,100. Also available framed.



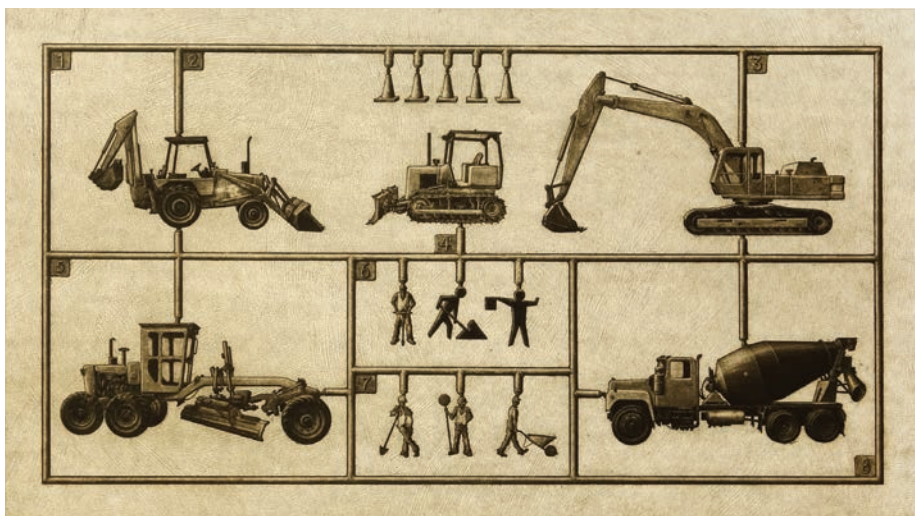
70. Robert MARX (American, 1925-2020) *Sisters*. Oil on linen. Signed. 1986. 10-inch split in paint, well away from figures. 60 x 50. [331313] \$12,000.



71. René MAGRITTE (Belgian, 1898-1967) *Les Moyens d'Existence, Rose et Poire*. From *Le Lien de Paille*. Color etching and aquatint. Signature stamp. 1967. Gravure Originale Atelier René Magritte, blindstamp. Reference: Kaplan-Baum 20. 6 $\frac{1}{8}$ x 4 $\frac{1}{8}$ (plate), 11 x 9 (sheet). [53520c] \$2,200.



72. Peter MILTON (American, b. 1930) *Two from Charlie*. Lift-ground etching and engraving. Signed. 1967. Edition 73/75. Reference: Milton cat. 48. Light struck where not covered by mat. 8 $\frac{1}{2}$ x 5 $\frac{7}{8}$ (plate), 13 x 9 (sheet). [53518c] \$1,200.



73. Kelvin MANN (Irish, b. 1972) *The Construction Game*. Etching. Signed. 2008. Edition of 35. 9½ x 16 (plate), 16 x 21½ (sheet). [343776] \$380.



74. Peggy MACNAMARA (American, b. 1947) *One White Crane*. Colored pencil and watercolor. Signed. 1983. 31½ x 47 (image/sheet). [46559c] \$4,800.



75. Joan MIRÓ (Spanish / Catalan) *Partie de Campagne IV*. Color etching and aquatint on Chiffon de Mandeure. Signed. 1967. Edition 57/75. Reference: Dupin 433. Printed by Arte Adrien Maeght. Published by Editions Maeght, Paris. 23 x 36½ (image), 29 x 41 (sheet). [48863c] \$6,000.



76. Peter MILTON (American, b. 1930) *Passage IV*. Photosensitive-ground etching and engraving. Signed. 1973. Edition 22/140. Reference: Milton cat. 90. 25 x 35¾ (plate). [4338] \$4,200. Also available framed.



77. **Gordon MORTENSEN** (American, b. 1938) *Autumn Birch*. Reduction woodcut. Signed. 1980. Edition AP, 1/14. 24½ x 32 (image), 26½ x 34⁹/₈ (sheet). [345892] \$1,300.



78. **Gordon MORTENSEN** (American, b. 1938) *Seaside Daisies*. Reduction woodcut. Signed. 1989. Edition AP, 2/15. 24 x 38 (image), 26¼ x 40 (sheet). [345906] \$1,200.



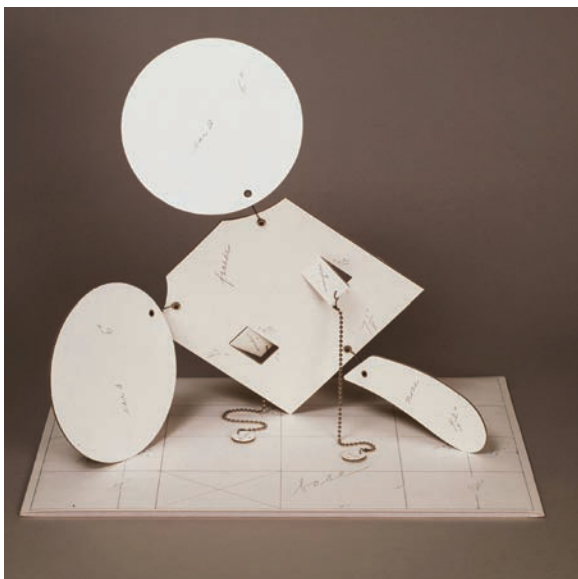
79. Shiko MUNAKATA (Japanese, 1903-1975) *The Sand Nest (Sunasu no saku)*. From *The Story of the Cormorant (Uto hangakan)*. Woodcut. Signed. Date of Block 1938. Date of Impression 1958. Red muna seal. Reference: Kodansha vol. 1, no. 53. 8 $\frac{7}{8}$ x 11 $\frac{1}{8}$ (block), 13 $\frac{1}{8}$ x 16 (sheet). [53231c] \$4,000.



80. Emil NOLDE (German / Danish, 1867-1956) *Stine (Head of a Woman)*. Woodcut on buff paper. Signed. 1906. Reference: Schiefeler 24. Provenance: Coll. Frank Pearls. 11 $\frac{1}{8}$ x 8 $\frac{7}{8}$ (image), 14 $\frac{1}{4}$ x 10 $\frac{1}{2}$ (sheet). [29609c] \$9,000.



81. Shiko MUNAKATA (Japanese, 1903-1975) *Self Portrait with Horned Owl*. Lithograph. Signed. 1967. Edition 23/50. 11 $\frac{3}{4}$ x 8 $\frac{1}{2}$ (image), 14 x 11 (sheet). [53291c] \$1,500.



82. Claes OLDENBURG (Swedish-born, American, b. 1929) *Geometric Mouse (Scale D)*. Die cut paper with stainless steel wire hinges and bead chains. 1971. Unlimited edition. Published by Gemini GEL, Los Angeles. Variable dimensions. [53565c] \$750.



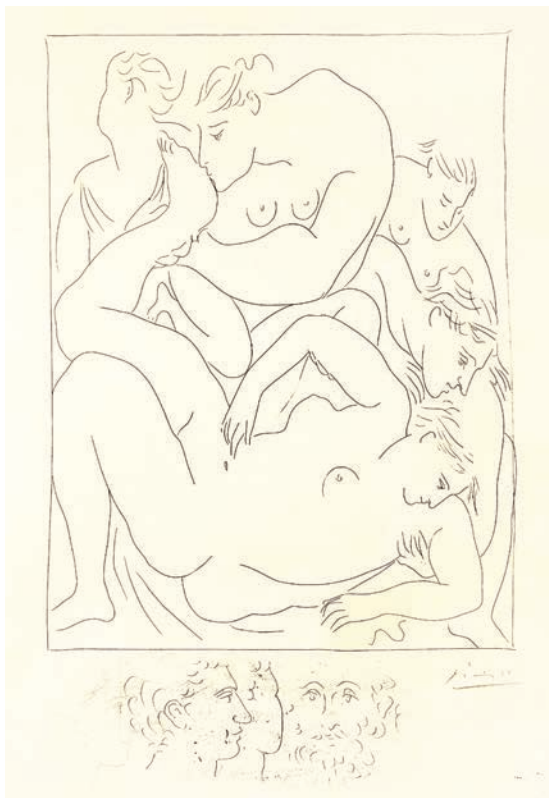
83. Barry MOSER (American, b. 1940) *The Mad Hatter*. From Lewis Carroll's *Alice's Adventures in Wonderland*. Wood engraving. Signed. 1982. Title page attached, printed separately. Printed by Harold McGrath. Published by Pennyroyal Press. 11¾ x 6½ (block), 17 x 107/8 (sheet). [53569c] \$1,100.



84. Eva PIETZCKER (German, b. 1966) *Dark Clouds*. Moku hanga woodcut. Signed. 2015-2016. Impression Nr. 2. 36 x 13 (image/sheet). [344557] \$1,000.



85. Pablo PICASSO (Spanish, 1881-1973) *Le Peintre à la Palette (Painter with Palette)*. Linocut. Signed. 1963. Edition 23/150. Reference: Bloch 1153. 25 x 21 (image), 29½ x 24¾ (sheet). [51400c] \$17,000.



86. Pablo PICASSO (Spanish, 1881-1973) *Eurydice piquée par un serpent* (*Eurydice Stung by a Serpent*). From *Les Métamorphoses d'Ovide*. Etching with remarque. Signed. 1931. Edition of 145. Reference: Cramer 19, Bloch 118, Geiser-Baer 162. Published by Albert Skira. 12½ x 8¾ (plate), 13 x 10 (sheet). [50518c] \$4,800.



87. Artemio RODRÍGUEZ (Mexican, b. 1972) *Verde es Vida*. Linocut. Signed. 2017. Edition of 15. 11⅞ x 8 (image), 15 x 11 (sheet). [335815] \$225.



88. Artemio RODRÍGUEZ (Mexican, b. 1972) *Uncle Sam is Having a Bad Day*. Linocut. Signed. 2016. Edition of 37. 11 x 11¾ (image), 15 x 15½ (sheet). [346516] \$475.



89. Artemio RODRÍGUEZ (Mexican, b. 1972) *The Garden*. Linocut. Signed. AP, intended edition of 6, only impression to date. 12 feet 8 inches x 12 feet. [343239] \$15,000.



90. Judith ROTHCHILD (American / French, b. 1950) *Feuilles d'hydrangea*. Mezzotint. Signed. Edition of 30. 11¾ x 7¾ (plate), 15¾ x 11¾ (sheet). [346609] \$550.



91. Abigail RORER (American, b. 1949) *Eye of Rhino*. Multi-block relief engraving with hand-coloring. Signed. Edition of 40. 4½ x 3½ (image), 8⅝ x 7 (sheet). [345843] \$125.



92. Judith ROTHCHILD (American / French, b. 1950) *Aulx (Garlic)*. Mezzotint. Signed. Edition of 30. 6 x 6 (plate), 15¼ x 10½ (sheet). [346608] \$350.



93. **Luigi ROSSINI** (Italian, 1790-1857) *Veduta dell'Anfiteatro Flavio, detto il Colosseo* (View of the Amphitheater of Flavio, called the Colosseum). From *Vedute di Antichità Romane* (Views of Ancient Rome). Etching. 1821. 18½ x 25½ (plate), 19¾ x 29¾ (sheet). [46470c] \$850.



94. **Georges ROUAULT** (French, 1871-1958) *Saint Jean-Baptiste*. Lithograph on heavy laid paper. Signed, titled and dated in ink. Also initialed and dated in the stone. Inscription '2e tirage' (in artist's hand). 1933. Reference: Wofsy 49. Soft wrinkle, faint ghost stain in margins away from the image. 12¼ x 15½ (image), 18⅞ x 22⅞ (sheet). [53283c] \$725.



95. Georges ROUAULT (French, 1871-1958) *Parade*. Frontispiece 1 for *Cirque de l'Etoile Filante*. Color etching. Usual initial and date in the plate. 1938. Date of Plate 1934. Edition of 280. Reference: Wofsy 319. Published by Vollard. 12 x 7⁵/₈ (plate), 17¹/₂ x 13³/₈ (sheet). [53288c] \$1,200.



96. Jenny SCHMID (American, b. 1969) *On Fire!* Lithograph and screenprint. Signed. 2019. Edition of 25. Published by Hoofprint Workshop, Chicago. 17 x 14 (image), 20 x 16 (sheet). [345693] \$375.



97. Kiyoshi SAITO (Japanese, 1907-1997) *Nara - Ancient City*. Color woodblock. Signed. 1957. Edition 55/200. Published by IGAS, New York. Lightly toned. 13³/₄ x 18 (blocks), 16 x 20³/₈ (sheet). [53233c] \$925.



98. **Sven Birger SANDZÉN** (Swedish / American, 1871-1964) *Sunshine Creek*. Linocut. Signed. 1931. Reference: Greenough 67. Strong impression. Repaired tears at margin edges, minimal hinge tape residue at top verso. 12 x 18 (block), 16 x 20 (sheet). [53068] \$600.



99. **Zha SAI** (Chinese, b. 1974) *Chinese Parasol's Whisper in October*. Woodcut. Signed. 2019. Edition of 12. 26¾ x 34 (image), 32 x 38¼ (sheet). [345757] \$800.



100. Ben SHAHN (American, 1898-1969) *Martin Luther King*. Wood engraving on Japan paper. Signed and red chop. Also signed by the engraver, Stefan Martin. 1966. Edition 35/300. Published by IGAS, New York. 19 x 15 (block), 24 $\frac{1}{8}$ x 20 (sheet). [53292c] \$900.



101. John SLOAN (American, 1871-1951) *Turning Out the Light*. From *New York City Life*. Etching. Signed in pencil. Edition of 100. Date of Plate 1905. Reference: Morse 134 iii/iii. 5 x 7 (image), 10 x 11¾ (sheet). [31971c] \$11,000.



102. David Alfaro SIQUEIROS (Mexican, 1896-1974) *Mountain Dancers*. Plate I from the *Mexican Suite*. Color lithograph on Arches. Signed. 1969. Edition 52/300. Printed by Atelier Mourlot, Paris. Published by Touchstone Publishing, New York. 21¼ x 15¾ (image), 25⅜ x 19¾ (sheet). [51828c] \$850.



103. Raphael SOYER (Russian-born American, 1899-1987) *Nude Reclining*. Ink drawing. Signed in pencil. 7½ x 9¾ (sheet showing). [51136c] \$325. Also available framed.



104. Harry STERNBERG (American, 1904-2001) *Enough*. Burnished aquatint. Signed. Purchase Prize winner, 2nd Annual National Fine Print Competition, AAA. Slightly toned. 14 $\frac{7}{8}$ x 11 $\frac{5}{8}$ (plate), 18 x 15 (sheet). [53242c] \$825.



105. Donald SULTAN (American, b. 1951) *Wall Flowers Portfolio No. 4*. Color silkscreen. Signed. 2008. Edition 33/190. Published by Jaffa Workshop of Har-El. 15 $\frac{1}{2}$ x 13 $\frac{1}{2}$ (image), 24 x 22 $\frac{1}{2}$ (sheet). [49193c] \$1,250.



106. Dennis STOCK (American, 1928-2010) *Café de Flore, Paris*. Black and white photograph. Unsigned. 1958. 14 $\frac{1}{2}$ x 22 $\frac{1}{2}$. [52570c] \$600. Also available framed.



107. Rufino TAMAYO (Mexican, 1899-1991) *Cabeza en Rojo (Head in Red)*. Color etching on Guarro paper. Signed. 1979. Edition 27/99. Reference: Pereda 257. Printed and published by Ediciones Polígrafa, Barcelona. 21¼ x 29⅝ (image/sheet). [48466c] \$2,700.



108. Mark TOBEY (American, 1890-1976) *Du fond d'un songe*. From *Vingt-deux poèmes de Jean Casson*. Color lithograph on BFK Rives. Signed. 1970. Pref. Edition XXIX/XXXV. 12⅛ x 8½ (plate), 14¼ x 11 (sheet). [53043c] \$625. Also available framed.



109. Christie TIRADO (American, b. 1990) *La Catrina*. From *La Lotería*. Silkscreen. Signed. 2019. Edition of 9, EV. 22½ x 17 (image), 30 x 22½ (sheet). [345618] \$500.



110. Anthony THIEME (American, 1888-1954) *Street Scene in Rockport, MA*. Oil on canvas. c. 1940-1942. 25 x 30 (painting), 28½ x 34 (with original frame). [53593c] \$12,800.



111. Tokuriki TOMIKICHIRO (Japanese, 1902-1999)
Woman Combing Her Hair (Study of the Artist's Wife).
Color woodblock. Signed, tomo seal. 1955. Edition
3/100. Oban. $12\frac{3}{4} \times 9\frac{3}{8}$ (blocks), $15\frac{1}{8} \times 10\frac{1}{4}$ (sheet).
[53202c] \$450.



112. Adriaen VAN OSTADE (Dutch, 1610-1685)
Mother with Two Children. Etching. Initialed in
the plate, lower left. 1675. Reference: Bartsch
14, Dutuit iii, Davidsohn-Godefroy-Hollstein
vi. Thread margins. $3\frac{1}{2} \times 2\frac{3}{4}$ (plate), $8\frac{5}{8} \times 2\frac{7}{8}$
(sheet). [53040c] \$900. Also available framed.



113. George TOOKER (American, 1920-2011) *Mirror*.
Lithograph. Signed. 1978. Edition 57/125. Reference:
Garver 4. Published by Editions Press, San Francisco with
blindstamp. Toned. 20×16 (image), $27\frac{1}{2} \times 22\frac{1}{4}$ (sheet).
[53559c] \$2,800. Also available framed.



114. George TOOKER (American, 1920-2011)
Voice. Lithograph. Signed. 1977. Edition 6/125.
Reference: Garver 3. Published by Editions
Press, San Francisco with blindstamp. $11 \times 9\frac{1}{4}$
(image), $20\frac{3}{4} \times 17\frac{3}{4}$ (sheet). [53566c] \$2,500.
Also available framed



115. Bernar VENET (French, b. 1941) *Grib (III)*. Etching, polymer gravure, carborundum, and photo etching. Signed. 2016. Edition 1/60. Printed by Peter Kosowicz. Published by Thumbprint editions, London. 28½ x 43 (image), 36 x 49¾ (sheet). [333553] \$4,500.



116. Hiroshi YOSHIDA (Japanese, 1876-1950) *Plum Gateway*. Color woodblock. Printed signature. Moderately toned, esp. verso. 14¾ x 9¾ (blocks), 15⅞ x 10½ (sheet). [53182c] \$425.



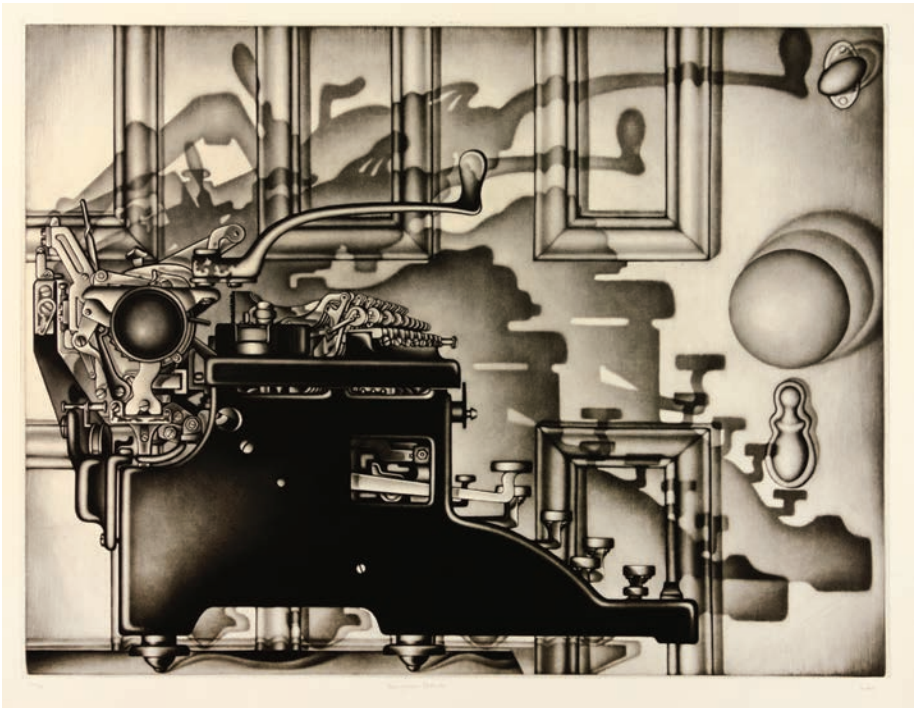
117. Hodaka YOSHIDA (Japanese, 1926-1995) *Ashura*. Color woodblock. Signed and dated. 1954. Tape residue at top margin edge. 14¾ x 9¾ (blocks), 15⅞ x 11 (sheet) [53183c] \$550.



118. June WAYNE (American, 1918-2011) *The Good Morrow*. Lithograph. Signed. Épreuve d'Artiste (Artist's Proof). 15 x 11 (image/sheet). [45506] \$1,500.



119. Baron Ernst VON MAYDELL (German, 1888-1961) *The Dance*. Watercolor and graphite on paper. Signed and dated. 1932. 7¾ x 8 (image), 8¼ x 9 (sheet showing). [17826c] \$5,500. Also available framed.



120. Carol WAX (American, b. 1953) *Remington Return*. Mezzotint. Signed. 1993. Edition of 75. 18½ x 24½ (plate), 23½ x 29¼ (sheet). [342295] \$2,500.



121. **Anders Leonard ZORN** (Swedish, 1860-1920) *Seaward Skerries*. Etching. Signed. Monogram and date in the plate. 1913. Reference: Asplund 256. 7 x 9¼ (plate), 12½ x 16 (sheet). [53303] \$985.

CATALOG LIST NO. 103—SPRING 2021

CONTACT: Rebecca McDonald, (206) 624-7684
or rebecca@dauidsongalleries.com

An additional impression may be available for certain works. Listed prices apply to the impression shown. Prices may vary for additional impressions. All items are guaranteed as described. Certificate of authenticity is available upon request. Please contact the gallery with questions or to discuss a work in detail. **All dimensions are given in inches, height precedes width.** Orders are shipped promptly upon receipt of full payment. Works are normally shipped insured via UPS unless other arrangements are specified. Shipping charges vary and are dependent on size and value of items ordered. Washington State residents must add appropriate sales tax. Items may be sent "on approval" beginning two weeks after initial catalog release. Works may be returned to the gallery for any reason within two weeks of purchase for a full refund less shipping. Returned works should be securely packed and fully insured.

Please inform the gallery of any special collecting interests. Davidson Galleries is willing to consider purchasing or consigning fine original prints individually or as collections.

Davidson Galleries is a charter member of the **International Fine Print Dealers Association** and is committed to its strict ethical standards.

IFPDA MEMBER

DOWNLOADABLE CATALOGS AVAILABLE

As part of our commitment to produce less waste, we are proud to offer our catalogs as downloadable PDFs through **dauidsongalleries.com**. Visit the publications page on the website to download free of charge.

If you would prefer to continue receiving our semi-annual printed catalogs by mail, **annual subscriptions are available for \$12**, deductible from your first catalog purchase. Please contact the gallery for details.



Join our bi-monthly
email newsletter!

DAVIDSON GALLERIES

313 Occidental Avenue South | Seattle, Washington 98104
www.davidsongalleries.com | Open Tuesday-Saturday 11-5:30

CHANGE SERVICE REQUESTED

CATALOG LIST NO. 103—SPRING 2021



122. **Carol SUMMERS** (American, 1925-2016) *Night*. Color woodcut. Signed. 1996. Proof, regular edition of 50. Reference: Summers 222. 19½ x 73 (image/sheet). [346530] \$3,500.

\$6.00