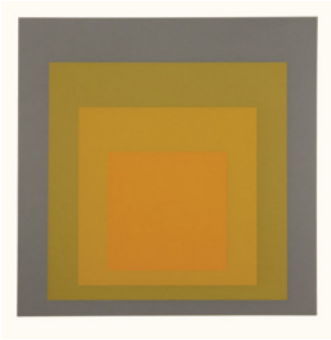




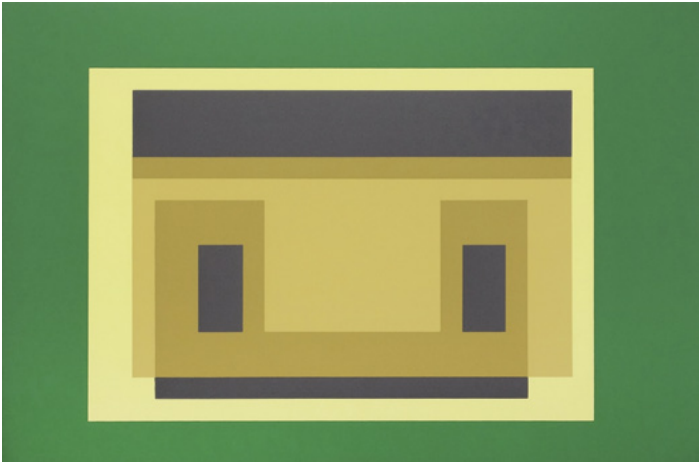
DAVIDSON GALLERIES

COVER IMAGE: Douglas COOPER (American, b. 1946) *Then and Now*. Charcoal on paper on panel. Signed. 2011. 48 x 36 (panel). [033318] \$6,000.

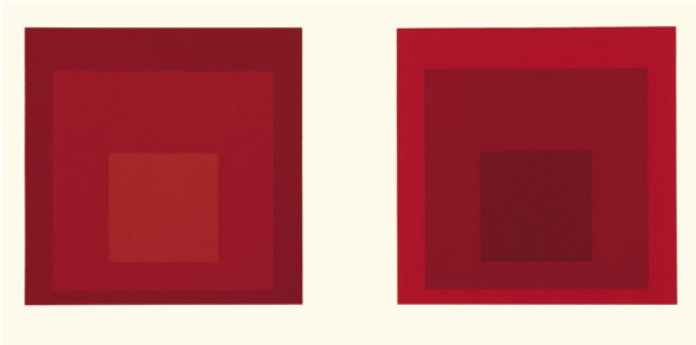
Douglas Cooper (the Andrew Mellon Prof. of Architecture at Carnegie Mellon University) was commissioned for the mural in the Martin Luther King Jr. County Courthouse in Seattle, 2001/2005.



1. Josef ALBERS (German-born, American, 1888-1976) *Portfolio II, Folder 24*. From *Formulation: Articulation Portfolio*. Serigraph. 1972. Published by Harry N. Abrams Inc. & Ives-Sillman, Inc. 10 x 10 (image), 15 x 20 (sheet). [52398] \$1,000.



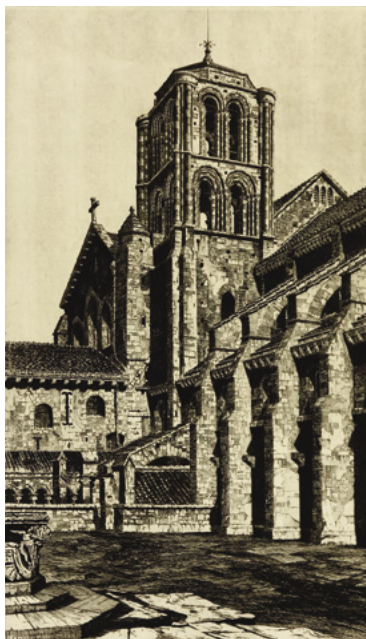
2. Josef ALBERS (German-born, American, 1888-1976) *Portfolio II, Folder 29*. From *Formulation: Articulation Portfolio*. Serigraph. 1972. Published by Harry N. Abrams Inc. & Ives-Sillman, Inc. 9¼ x 14 (image), 15 x 20 (sheet). [52379] \$1,000.



3. Josef ALBERS (German-born, American, 1888-1976) *Portfolio II, Folder 27*. From *Formulation: Articulation Portfolio*. Serigraph. 1972. Published by Harry N. Abrams Inc. & Ives-Sillman, Inc. 67/8 x 67/8 (each image), 15 x 20 (sheet). [52395] \$1,800.



4. (Above) Stanley ANGUS (British, fl. 1930-1938) *Swaileholm Farm*. Drypoint. Signed. $10\frac{1}{2} \times 16$ (plate), $13\frac{5}{8} \times 19\frac{5}{8}$ (sheet). [52054c] \$185.



5. (Right) John Taylor ARMS (American, 1887-1953) *Basilica of the Madeleine, Vezelax*. #32 for *French Church Series*. Etching. Signed. 1929. Dedicated "To Mr. Briscoe with my compliments..." Reference: Fletcher 223. $12\frac{3}{4} \times 7\frac{1}{2}$ (plate), $14\frac{1}{4} \times 9\frac{1}{2}$ (sheet). [52547c] \$325.



6. (Above) John Taylor ARMS (American, 1887-1953) *Notre Dame de Paris*. #7 for *French Church Series*. Etching and aquatint. Signed. 1925. Reference: Fletcher 167. Printed by Frederick Reynolds. $12\frac{1}{8} \times 13\frac{5}{8}$ (plate), $15\frac{1}{2} \times 18\frac{1}{8}$ (sheet). [52565c] \$1,200.



7. (Right) John Taylor ARMS (American, 1887-1953) *Abside de la Cathedrale de St. Pierre et St. Paul, Troyes*. Etching on laid paper. 1930. Dedicated "To Haylan from John, March 1946". Trial Proof of the Second state. Brilliant impression on old paper. Reference: Fletcher 224. $12\frac{1}{2} \times 5\frac{3}{8}$ (plate), $14\frac{3}{8} \times 9\frac{5}{8}$ (sheet). [52509c] \$400.



8. Charles ARNOLDI (American, b. 1946)
Ellipse #4a. Woodblock. Signed. 2019. Edition 5/25. 39¼ x 39½ (blocks), 47¼ x 47¼ (sheet). [344962] \$3,500.

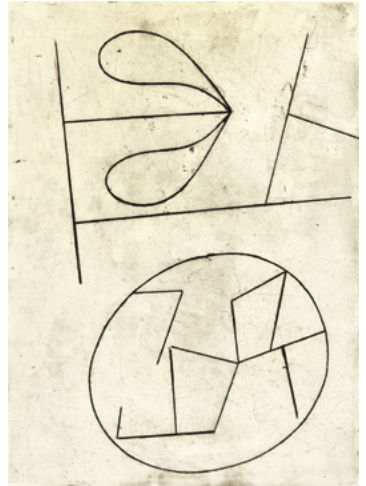
Charles Arnoldi's recent woodblock prints will be on exhibition in the gallery October 2-31. Visit our website to see the full selection of these and other works by Arnoldi.



9. Charles ARNOLDI (American, b. 1946) *Machu Picchu 1*. Woodblock. Signed. 2019. Edition 5/30. 16¼ x 22½ (blocks), 24½ x 30¼ (sheet). [344966] \$1,800.



10. Charles ARNOLDI (American, b. 1946) *Machu Picchu 5*. Woodblock. Signed. 2019. Edition 5/30. 16¼ x 22½ (blocks), 24½ x 30¼ (sheet). [344970] \$1,600.



11. Jean (Hans) ARP (French, 1886-1966)
From *Vers le Blanc* Portfolio. Etching. Edition 340/499. Provenance: Van Straaten Gallery. 12¾ x 9¾ (plate), 14⅞ x 11 (sheet). [51800c] \$750.

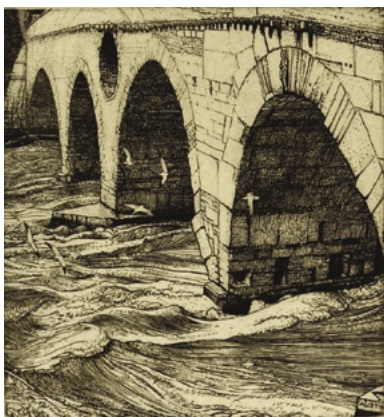
12. Mio ASAHI (Japanese, b. 1957) *Kaleidoscope*. Etching and aquatint. Signed. Edition 1/35. 15¾ x 23½ (image), 23 x 30½ (sheet). [344075] \$450.



13. Robert Sargent AUSTIN (English, 1895-1973) *The Horse of Ostend*. Etching. Signed. 1921. Edition 40. Reference: Dodgson 28. 5¾ x 7¾ (plate), 8½ x 7 (sheet). [52154c] \$350.



14. Robert Sargent AUSTIN (English, 1895-1973) *The Bell #1*. Engraving. Signed. 1926. Edition 60. Reference: Dodgson 67 ii. 5½ x 4⅞ (plate), 8½ x 7 (sheet). [52153c] \$350.



15. Robert Sargent AUSTIN (English, 1895-1973) *The Ponte Pietra, Verona*. Engraving. Signed. Reference: Dodgson 56. 5⅞ x 4¾ (plate), 12½ x 9¾ (sheet). [52152c] \$425.



16. Robert Sargent AUSTIN (English, 1895-1973) *The Towpath*. Drypoint. Signed. 4 x 6⅞ (plate), 8¼ x 10⅞ (sheet). [52156c] \$300.



17. Leonard BASKIN (American, 1922-2000) *Crow Scout / White Man Runs Him*. Lithograph. Signed and signed in the stone. 1974. Dedicated "for Nick". Reference: Fern 641. 34 x 24 (image), 41½ x 29¾ (sheet). [52742] \$1,000.



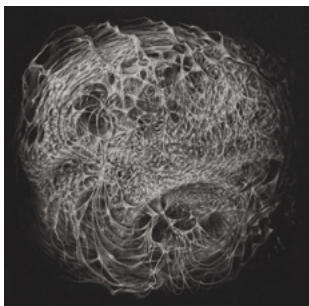
18. Leonard BASKIN (American, 1922-2000) *High Bear - Standing Rock, Sioux*. Five color lithograph on Velin d'Arches. Signed and signed in the stone. 1973. Artist Proof. Regular ed. 100. Reference: Fern 620. 36 x 24 (image), 41½ x 29¾ (sheet). [52741] \$1,200.



19. Leonard BASKIN (American, 1922-2000) *Red Cloud*. Five color lithograph on Arches. Signed. 1974. Artist Proof. Regular ed. 100. Dedicated "for Nik". Reference: Fern 653. 34 x 24 (image), 41½ x 29¾ (sheet) [52740] \$1,100.



20. Leonard BASKIN (American, 1922-2000) *Chief American Horse - Ogalalla, Sioux*. Color lithograph. Signed. Signed and dated in the stone. 1973. Edition AP. Regular ed. 100. Reference: Fern 619. Browned from age at outer margin edge. 37 x 24 (image), 41½ x 29¾ (sheet). [52743] \$1,200.



21. Bette BURGOYNE (American, b. 1959) *Persona*. White pencil on black paper. 2011. 11½ x 12 (image/sheet). [032901] \$575. Also available framed.



23. Albert de BELLEROCHÉ (Welsh/English, 1864-1944) *Marthe (Vallie)*. Lithograph. Signed. 1907. 8 x 6 (image), 11¼ x 7⅞ (sheet). [49889c] \$485.



24. Albert de BELLEROCHÉ (Welsh/English, 1864-1944) *Berthe Portant un Grand Chapeau*. Lithograph. Initialed A.B. 1904. Minor printer's creases. 7½ x 6½ (image), 14½ x 11 (sheet). [49822c] \$500.



22. Enrico BAJ (Italian, 1934-2003) *Dolly Girl*. Mixed technique. Signed. Edition 81/100. Blindstamp at bottom left margin corner, Collector's Press. 25½ x 20 (image), 29 x 22 (sheet). [51786c] \$420.



25. Albert de BELLEROCHÉ (Welsh/English, 1864-1944) *Nini Fleury*. Lithograph. Signed. c. 1909. 13½ x 9½ (image), 17¾ x 14¼ (sheet). [49323c] \$800.

We recently published an extensive catalog of the lithographs by Bellerocche. Please visit the catalogs section of our website to download a PDF version of the catalog.



26. Sir Frank BRANGWYN (English, 1867-1956) *Venice*. Etching. Signed. Skillfully repaired tear at bottom right margin. $6\frac{3}{8} \times 8\frac{7}{8}$ (plate), $8\frac{1}{2} \times 11\frac{1}{4}$ (sheet). [52021c] \$300.



28. Arthur John Trevor BRISCOE (English, 1873-1943) *Burning Off*. Etching. Signed. 1930. Edition 44/75. $7\frac{1}{8} \times 11\frac{1}{8}$ (plate), $9\frac{3}{8} \times 14\frac{1}{2}$ (sheet). [52087c] \$450.



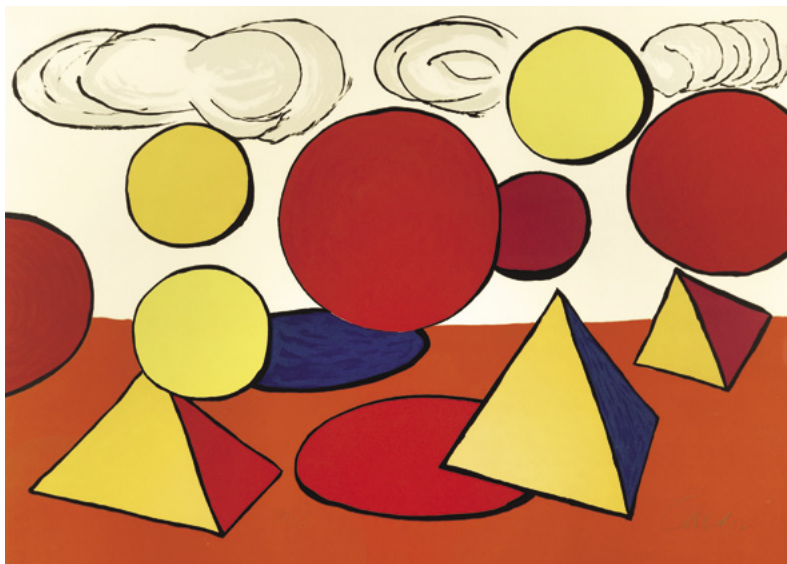
30. Thomas Hart BENTON (American, 1889-1975) *Sunset*. Lithograph. Signed. 1941. Edition 204. Reference: Fath 43. Publisher: AAA. $9\frac{7}{8} \times 13\frac{1}{8}$ (image), $11\frac{7}{8} \times 15\frac{7}{8}$ (sheet). [52555c] \$1,600.



27. Graciela Rodo BOULANGER (Bolivian, b. 1935) *Girl Holding Cat*. Pencil drawing on heavy handmade paper. Signed. 1980. Soiled. 9×6 (image), 12×8 (sheet). [52729c] \$900. Also available framed.



29. Arthur John Trevor BRISCOE (English, 1873-1943) *The Lever*. Etching. Signed. 1928. One of five trial proofs of an unpublished plate. Reference: L. III, a. Slightly soiled at margin edges. $6\frac{1}{2} \times 5$ (plate), $8\frac{3}{8} \times 6\frac{1}{2}$ (sheet). [52085c] \$385.



31. Alexander CALDER (American, 1898-1976) *Pyramides*. For *De Le Memoire Elémentaire Portfolio*. Color lithograph. Signed. 1978. Edition 73/100. Published by: Éditions de la Différence. 20½ x 28¼ (image/sheet). [52578c] \$2,500.



32. Alexander CALDER (American, 1898-1976) *Potpourri en Ciel*. Color lithograph. Signed. 1975. Edition 4/90. Published by: Maeght, Paris. 29 x 22 (image/sheet). [52579c] \$2,500.

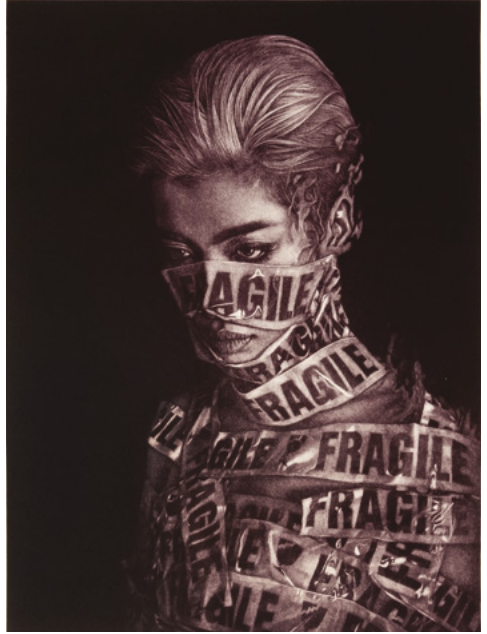


33. George Elbert BURR (American, 1859-1939) *Soapweed, Arizona*. Etching, drypoint, and aquatint on laid paper. Signed. Monogrammed in the plate. Reference: Seeber 286. 10 x 7 (plate), 13⅝ x 10 (sheet). [52510c] \$1,100.

To download a PDF of our catalog of etchings by George Elbert Burr, please visit the catalogs section of our website; visit the artist's page to view all works currently available for purchase.



34. Marc CHAGALL (Russian/French, 1887-1985)
Eagle and Rabbit (L'Aigle et l'Escarbot). From *Les Fables de la Fontaine*. Etching. Signed in the plate, bottom right. 1927/1930. Galatea watermark. Reference: Sorlier 110. Published by: Volland. Slight mat burn. 16¾ x 13 (sheet). [52685c] \$1,100.



35. Wal CHIRACHAISAKUL (Thai, b. 1990)
Fragile Soul. Mezzotint. Signed. 2018. Edition 27/40. 12 x 9 (image), 17½ x 13½ (sheet). [344102] \$285.



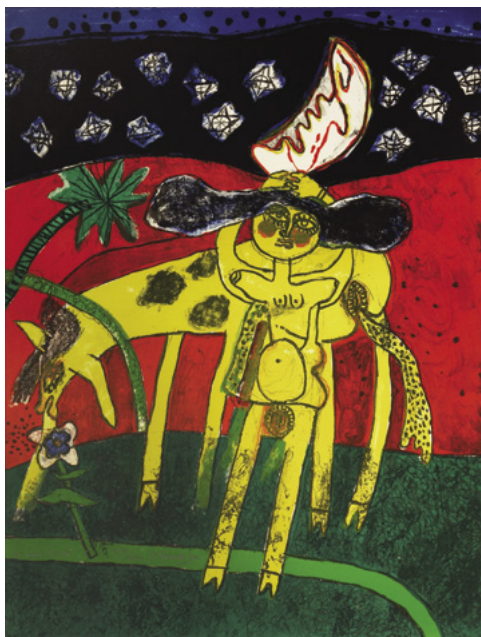
36. Douglas COOPER (American, b. 1946) *Two Routes Across*. Charcoal on paper on panel. Signed. 2012. 48 x 36 (panel). [033319] \$6,000.



37. Lovis CORINTH (German, 1858-1925) *Atelier Winkel*. From *Bei den Corinthern*. Drypoint on laid paper. Signed. Sept. 28, 1919. Watermark (J. W. Zanders). Reference: Schwarz 380 xiii. Tape and hinge residue at top margin edge, front and verso. 12¾ x 8⅞ (plate), 17½ x 14¼ (sheet). [52703c] \$385.



38. (Guillaume Cornelis Van Beverloo) CORNEILLE (Dutch, 1922-2010) *Elle est Fleur*. Color lithograph. Signed. 1972. Edition 136/200. 25¾ x 19⅞ (image/sheet). [51735c] \$250.



40. (Guillaume Cornelis Van Beverloo) CORNEILLE (Dutch, 1922-2010) *La Nuit Étoilée*. Color lithograph. Signed. 1972. Edition 156/200. 26 x 19⅞ (image/sheet). [51733c] \$425.



39. Camille COROT (French, 1796-1875) *La Petite Soeur* (*The Little Sister*). Cliché-verre etching. 1854. Edition 119/150. Red stamp verso. Reference: Delteil 41, Melot 41. Published by: Sagot / Le Garrec. Hinge residue top verso. 6½ x 8 (plate/sheet). [52700c] \$925.



41. Charles Francois DAUBIGNY (French, 1817-1878) *Le Ruisseau dans La Clairiere*. Cliché-verre etching. Signed in the plate at bottom left. Date of Plate: 1862. Date of Impression: 1921. Edition 150. Published by: Sagot/Le Garrec. 8 x 6⅝ (plate/sheet). [52683c] \$475.



42. Erik DESMAZIÈRES (French, b. 1948) *La Tour de Babel*. Etching on Arches. Signed. 1976. Edition 13/90. Reference: Fitch-Febvrel 21. 19 x 25¹/₈ (image/sheet). [49642c] \$3,820.



43. David DRIESBACH (American, 1922-2019) *Hitchhiker*. Color etching and aquatint. Signed. Edition 23/50. 9 x 11³/₄ (plate), 12¹/₂ x 14¹/₄ (sheet). [52537c] \$275.



44. Lockwood DENNIS (American, 1937-2012) *Car, Front*. Woodcut. Signed. 1986. Edition 36/37. 7¹/₂ x 8¹/₂ (image), 12⁷/₈ x 13 (sheet). [37533] \$275.

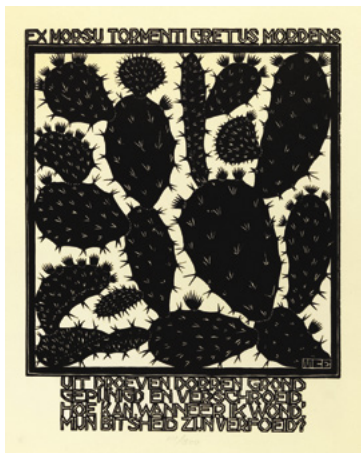


45. Francis Edgar DODD (English, 1874-1949) *Duke of York's Column*. Engraving and drypoint. Signed. One of five proofs in the First state, all with different inks. Reference: S. 90. 6¹/₂ x 9 (plate), 8¹/₈ x 11¹/₈ (sheet). [52320c] \$385.

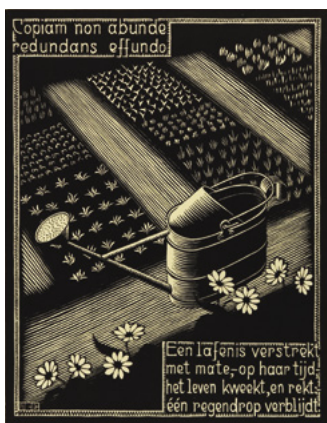
The catalogue raisonné of *The Complete Woodcuts by Lockwood Dennis* (published by Davidson Galleries) is available through the books section of the website.



46. M.C. ESCHER (Dutch, 1898-1972) *Scarabs*. Wood engraving. April 1935. Reference: Bool 273. $7\frac{1}{8} \times 9\frac{1}{2}$ (block). [52714c] \$3,200.



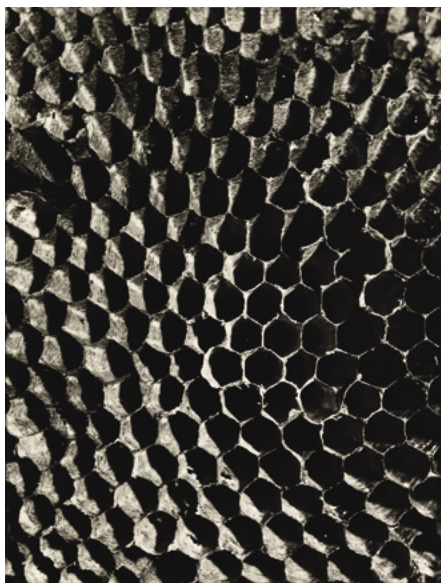
48. M.C. ESCHER (Dutch, 1898-1972) *Cactus*. XX/XXVII from *Emblemata*. Woodcut. 1931. Edition 111/300. Reference: Bool 181. $7\frac{1}{8} \times 5\frac{1}{2}$ (block). [52710c] \$1,800.



49. M.C. ESCHER (Dutch, 1898-1972) *Watering-Can*. XXII/XXVII from *Emblemata*. Woodcut. 1931. Edition 111/300. Reference: Bool 184. $7\frac{1}{8} \times 5\frac{1}{2}$ (block). [52711c] \$2,000.



47. M.C. ESCHER (Dutch, 1898-1972) *Flying Witch & Claw Illustrations with Initial H*. Pg. 11 and 12 from *Scholastica*. Woodcuts. 1933. Edition 300. References: Bool 194, 195, 196. $9 \times 6\frac{3}{8}$ (block for witch), $3\frac{1}{8} \times 2\frac{3}{8}$ (block for claw). [52712c] \$3,500.



50. Andreas FEININGER (American, 1906-1999) *Untitled*. Photograph. Signed verso and on mat. 1948. Artist's stamp verso. 14×11 . [52554c] \$700.



51. Sheryl FUNKHOUSER (American, b. 1945) *Heads of State*. Etching and aquatint with chine-collé. Signed. Edition 10/10. 6⁷/₈ x 10⁵/₈ (plate), 11 x 15 (sheet). [51792c] \$225.



52. Kevin FLETCHER (American, b. 1956) *By the Peat Fire in the Old Boatshed, Skye*. Monotype. Signed. 2020. 12 x 9 (image), 15¹/₈ x 11¹/₄ (sheet). [345047] \$500.



53. Gerald GEERLINGS (American, 1897-1958) *Chicago Fair*. Etching. Signed. Very faintly toned within mat opening. 11⁷/₈ x 8⁷/₈ (plate), 14¹/₈ x 11 (sheet). [52514c] \$1,800.



54. Ernest FIENE (American, 1894-1965) *City Lights* (Madison Square Park, NY). Etching. Signed. 1932. Edition 40. 11⁵/₈ x 9¹/₄ (plate), 15 x 12¹/₈ (sheet). [51791c] \$1,250.



55. (Above) Ogata GEKKO (Japanese, 1859-1920) *Captain Osawa's Seven-man Suicide Squad from the Warship Yaeyama Pushing Forward in Rongcheng Bay*. Color woodblock. Signed. 1895. Gekko seal. Margin seals: Kumiai Seigen. Published by: Sasaki Toyokichi. Oban triptych. [52697c] \$650.

56. (Right) Francisco GOYA (Spanish, 1746-1828) *Aveugle Enlevé sur les Cornes d'un Taureau* (*Blind Man Tossed on the Horns of a Bull*). For *Gazette des Beaux-Arts*, vol. XII, p. 388. Etching and aquatint. 1867. "A" watermark. Reference: Harris 25 i/iv. 7 x 8½ (plate), 8¼ x 11¾ (sheet). [52676c] \$900.



57. Francisco GOYA (Spanish, 1746-1828) *Duendecitos*. Plate 49 for *Los Caprichos*. Etching and aquatint. Reference: Delteil 86 ii, Harris 84 iv or later. 8½ x 57/8 (plate), 127/8 x 97/8 (sheet). [52542c] \$650.



58. Francisco GOYA (Spanish, 1746-1828) *Ensayos*. Plate 60 for *Los Caprichos*. Etching and aquatint. Date of Plate: 1799. Reference: Delteil 97 iii, Harris 95 iv or later. 8¼ x 6½ (plate), 13 x 9¾ (sheet). [52536c] \$600.

59. (Right) Gordon Hope GRANT (American, 1875-1962) *Harbor Traffic*. Lithograph. Signed. 1942. Edition 250. Published by: Associated American Artists. 9 x 11³/₈ (stone), 11³/₈ x 15⁷/₈ (sheet). [52311c] \$350.



60. Joseph GRAY (English, 1890-1962) *Cathedral Overlooking the Harbor*. Drypoint. Signed. Edition 36/60. 13 x 8³/₄ (plate), 15 x 10⁵/₈ (sheet). [52079c] \$250.



61. Joseph GRAY (English, 1890-1962) *The Bay of Biscay*. Drypoint. Signed. Edition XXVIII. 10 x 14⁵/₈ (plate), 11³/₄ x 16⁷/₈ (sheet). [52215c] \$300.



62. Jennifer GUSKE (American, 1950) *Wolfman with Cool Shades*. Color linocut. Signed. 1982. Edition 1/13. 30 x 32 (blocks), 31¹/₂ x 33 (sheet). [52725c] \$375.



63. (Left) Frederick Landseer GRIGGS (English, 1876-1938) *Syde*. For *Little Church Series*. Etching. Signed. 1935. Dedicated "to Dean Percy and Jesse". Reference: Comstock 54 iv. 5 x 4⁵/₈ (plate), 7³/₄ x 6⁵/₈ (sheet). [52143c] \$650.



64. Frederick Landseer GRIGGS (English, 1876-1938) *Laneham*. (Church of St. Peter in Laneham in Nottinghamshire). Etching. Signed. 1923. Reference: Comstock 30. 5 x 4³/₄ (plate), 10 x 8 (sheet). [52142c] \$550.



65. Seymour HADEN (English, 1818-1910) *Kensington Gardens #1*. Etching with drypoint on thin tissue. Signed. Also signed and dated in the plate. Date of Plate: 1859. Reference: Harrington 12. 6¹/₄ x 4⁵/₈ (plate), 8¹/₂ x 6¹/₈ (sheet). [52473c] \$425.

66. Frederick Landseer GRIGGS (English, 1876-1938) *St. Mary's Nottingham*. Etching. Signed. May 29, 1925. Reference: Comstock 41 iv. Fine proof on old paper. 7³/₈ x 10³/₈ (plate), 12¹/₈ x 18³/₈ (sheet). [52140c] \$625.





67. Martin HARDIE (English, 1875-1952) *The Fig Tree, Martigues*. Etching. Signed. Edition 60. Small loss at right margin edge. 7 x 5 (plate), 9³/₈ x 7¹/₂ (sheet). [52028c] \$225.



68. Martin HARDIE (English, 1875-1952) *The Canal Chioggia*. Etching. Signed. Reference: Laver 112. 7⁷/₈ x 10⁷/₈ (plate), 10¹/₈ x 15¹/₂ (sheet). [52024c] \$250.



69. Martin HARDIE (English, 1875-1952) *A Street at Chioggia*. Drypoint. Signed. 1925. Reference: F. Hardie 107. 11³/₄ x 8¹/₄ (plate), 18¹/₈ x 8³/₈ (sheet). [51773c] \$200.



70. Ellen HECK (American, b. 1983) *Charming*. Woodcut and drypoint. Signed. 2015. Edition 4/9. 14 x 9 (image), 22 x 15 (sheet). [343902] \$800.



71. Winslow HOMER (American, 1836-1910) *Shipbuilding, Gloucester Harbor*. For *Harper's Weekly*. Wood engraving. Oct. 11, 1878. Reference: Beam 204. 9³/₈ x 13⁵/₈ (block), 11 x 16 (sheet). [52529c] \$400.

Winslow Homer designed more than 200 wood engravings for *Harper's Weekly* between 1857-1875. A selection of the best known images is available on the artist's page of our website.



72. William HOGARTH (English, 1697-1764) *Satire on False Perspective (Whoever Makes a Design...)*. Engraving by Luke Sullivan after Hogarth's drawing. Date of Plate: February 1754. Prior to rework for Heath printings. "Frontispiece" largely burnished out. Reference: Paulson 232 ii/ii. 8¹⁵/₁₆ x 7³/₁₆ (plate). [22923c] \$165.



73. David HOCKNEY (English, b. 1937) *Serenade*. Plate 49 for *Blue Guitar Portfolio*. Color etching. Signed. Edition 149/200. Reference: M.C.A.T. 196. Published by: Petersburg Press. 16¹/₂ x 13³/₈ (plate), 20¹/₂ x 17⁷/₈ (sheet). [52558c] \$3,500.



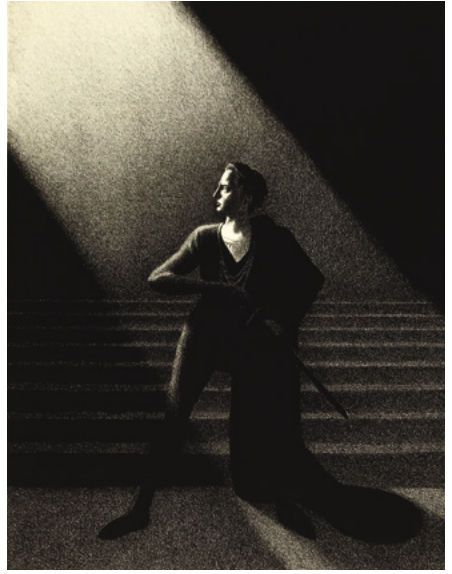
74. David HOCKNEY (English, b. 1937) *The Old Guitarist*. Plate 2 for *Blue Guitar Portfolio*. Color etching. Signed. 1977. Edition 149/200. Reference: M.C.A.T. 179. Published by: Petersburg Press, London and New York. 16³/₄ x 13¹/₂ (plate), 20¹/₂ x 17³/₄ (sheet). [52559c] \$5,800.



75. Albany E. HOWARTH (English, 1872-1936)
Cathedral Interior. Etching, aquatint, and drypoint.
Signed. Signed and dated in the plate. 1924. 15⁷/₈ x 8³/₈
(plate), 19³/₄ x 12 (sheet). [51785c] \$225.



77. Edward Bouverie HOYTON (British, 1900-1988)
Timber Hauling, Arundel Park. Etching. Signed. Specks
of glue residue in margin. 10³/₄ x 13³/₄ (plate), 13³/₄ x 19
(sheet). [52212c] \$350.



76. Ellison HOOVER (American, 1888-1955)
Barrymore as Hamlet. Lithograph. Signed. Edition 50.
11¹/₄ x 9 (image), 14 x 12 (sheet). [52535c] \$285.



78. Ellison HOOVER (American, 1888-1955) *Pueblo,
New Mexico*. Lithograph. Signed. c. 1940. Edition 30.
Three small spots in margins. 11⁷/₈ x 8⁷/₈ (image),
15⁷/₈ x 11¹/₈ (sheet). [52544c] \$575.



79. Friedensreich HUNDERTWASSER (Austrian, 1928-2000) *Columbus Rainy Day in India*. Plate 6 for *Regentag Portfolio*. Serigraph with 17 colors and foil stamping. 1971/72. Edition 02438/3000. Reference: Koschantazky 49. 19 x 26¼ (sheet). [52584c] \$3,000.



80. Friedensreich HUNDERTWASSER (Austrian, 1928-2000) *It Hurts to Wait with Love if Love is Somewhere Else*. Plate 3 for *Regentag Portfolio*. Color serigraph with foil stamps. 1971. Edition 00326/3000. Reference: Koschantazky 46. Published by: Ars Viva, Vienna. Faint toning. 14¼ x 23½ (image), 18⅞ x 26⅞ (sheet). [52563c] \$3,000.



81. Friedensreich HUNDERTWASSER (Austrian, 1928-2000) *Olympische Spiele München 1972*. Silkscreen with embossings and foil stamping. Edition 3917/3999. 40½ x 25⅞ (image/sheet). [52581c] \$850.



82. Friedensreich HUNDERTWASSER (Austrian, 1928-2000) *Olympische Spiele München 1972*. Silkscreen with embossings and foil stamping. Edition 3970/3999. Crimple mark in center of image. 40½ x 25⅞ (image/sheet). [52582c] \$750.



83. Maqbool Fida HUSAIN (Indian, 1915-2011) *Woman with Two Donkeys*. From *International Graphic Arts Society Publication #43*. Color lithograph. Signed. March 1961. Edition 74/200. Stamp verso: "Made in Switzerland Edition: ARTA ZURICH". 14 x 18 (image), 15¹/₈ x 19¹/₂ (sheet). [51917c] \$2,200.



84. Liza JONES (American, b. 1944) *Spring Willow Twigs*. Pastel drawing. Signed. 24 x 30 (image/sheet). [46355c]. \$1,250.



85. Paul JACOULET (French, 1902-1960) *La Mariée - Seoul, Corée*. Color woodblock. Signed. Feb. 1948. Owl seal. Reference: Miles 91. Printed by: Fuji, Ogawa. Carved by: Maeda. 15¹/₂ x 11⁷/₈ (blocks), 18¹/₈ x 14¹/₄ (sheet). [52448c] \$1,100.



86. Paul JACOULET (French, 1902-1960) *Le Marie - Seoul, Corée*. Color woodblock. Signed. Nov. 1950. Owl seal. Reference: Miles 110. Printed by: Uchikawa, Onodera, Ogawa. Carved by: Maeda. 15¹/₂ x 11⁷/₈ (blocks), 18³/₄ x 14 (sheet). [52449c] \$1,500.



87. Paul JACOULET (French, 1902-1960) *Le Mandarin Aux Lunettes - Mandchoukuo*. Color woodblock. Signed. May 1950. Ivy seal. Watermark. Reference: Miles 106. Carved by: Maeda. Faint toning in margins. 15¹/₂ x 11³/₄ (blocks), 18³/₄ x 14 (sheet). [52461c] \$1,400.



88. Michael KAREKEN (American, b. 1961) *Evening Light; Humphrey Head*. Watercolor monotype. Signed. 2019. 16 x 24 (image), 21¾ x 29½ (sheet). [343027] \$2,000.



90. Alex KATZ (American, b. 1927) *Drawing of a Woman*. Charcoal and conté on buff wove paper. Signed, bottom left. 54 x 40 (image/sheet). [47705c] \$28,000 framed.



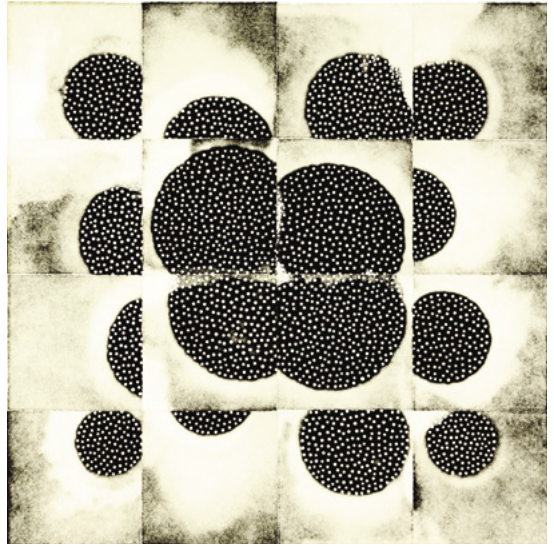
89. Philip KAPPEL (American, 1901-1981) *Repairs*. Drypoint. Signed. 5 x 5⅞ (plate), 6 x 9⅞ (sheet). [51812c] \$185.



91. Andrei KARPOV (Russian, b. 1959) *Sky Horsemen*. Oil on canvas. Signed and dated. 1998. 31 x 36. [18328] \$4,500 framed.



92. Shoko KITAMOTO (Japanese, b. 1993) *Shinjuku Rendezvous*. Mezzotint. Signed. 2016. Edition 89/100. 9 x 6½ (image), 11¼ x 8½ (sheet). [344641] \$175.



93. (Above) Eunice KIM (Korean/American, b. 1971) *Tessellation (16-3) #6*. Assembled collagraph monoprint. Signed. 2010. 12 x 12 (image/sheet). [344610] \$600.



94. Gene KLOSS (American, 1903-1996) *Song of the Buffalo Hunt*. Drypoint and aquatint. Signed. 1979. Edition 25/25. Reference: P. Kloss cat. #584. 107/8 x 137/8 (plate), 147/8 x 185/8 (sheet). [52564c] \$850.



95. Gene KLOSS (American, 1903-1996) *Return of the Processional*. Etching and aquatint. Signed. 1967. Artist Proof. Regular edition 50. Reference: P. Kloss cat. #518. 127/8 x 177/8 (plate), 16 x 21½ (sheet). [52556c] \$2,500.



96. (Left) Ida KOHLMAYER (American, 1912-1997) *Findlay's Print*. Color lithograph. Signed. 1979. Edition 83/150. Reference: B. 1360. Provenance: Gift to her dealer, David Findlay. 24½ x 36 (image), 30½ x 42½ (sheet). [52708c] \$875. Also available framed.



97. Käthe KOLLWITZ (German, 1867-1945) *From Many Wounds You Bleed, Oh People* (*Aus vielen Wunden blutest du, oh Volk*). Aquatint and etching. 1929. Reference: Klipstein 29 lv, b. Printed by: Von der Becke, posthumously. Blindstamp, bottom right corner. 47/8 x 13¼ (plate), 101/8 x 17¼ (sheet). [52695c] \$700.



98. Käthe KOLLWITZ (German, 1867-1945) *Conspiracy* (*Beratung*). Etching. Van der Becke blindstamp. Reference: Klipstein 25. Provenance: Ferdinand Roten Galleries. Faintly light struck. 11½ x 7 (plate), 17½ x 127/8 (sheet). [52527c] \$725.



99. Takuji KUBO (Japanese, b. 1948) *Notre Dame, the Spire*. Etching. Signed. 1997. Edition 33/100. Won first prize at the Royal Academy, London. 12½ x 9½ (plate), 18½ x 14¼ (sheet). [52518c] \$485.



100. (Left) Torii KOTONDO (Japanese, 1900-1976) *Geisha in Summer Kimono*. Color woodblock. Signed and sealed. c. 1934. The artist's last full-size bijin print. Toned, especially in margins and verso. Some fading. 16 x 10 (blocks), 17½ x 11¾ (sheet). [52669c] \$2,500.



101. (Left) Auguste Louis LÈPERE (French, 1849-1918) *Cathedral de Reims*. Etching. Signed and signed in the plate. Impression no. 43 of 150. Snail watermark. Reference: Texier-Bernier 403 iv/iv. 15½ x 19½ (plate), 22¾ x 17 (sheet). [52485c] \$825.



103. Maxime LALANNE (French, 1827-1886) *Crépuscule*. Etching after Crome. Signed in the plate. Reference: Bescaldi 143. Proof on thin tissue. 12¼ x 4¾ (plate), 10¾ x 7¾ (sheet). [52101c] \$185.



102. (Left) Auguste Louis LÈPERE (French, 1849-1918) *Le Boulevard Montmartre (at Night)*. Wood engraving. Signed in blue pencil. Hinge residue along right margin edge, verso. 7½ x 4¾ (block), 9¼ x 6 (sheet). [52476c] \$300.



104. (Right) Clare V. H. LEIGHTON (English/American, 1898-1989) *The Ever Present*. Wood engraving. Signed. Edition 35/50. 5⅞ x 3⅞ (block), 7 x 7¼ (sheet). 52519c] \$450.

105. (Below) Toyohara KUNICHIKA (Japanese, 1835-1900) *The Actor Ichikawa Sadanji I as Akiyama Kii No Kami Amidst Flames*. From *New Plays of the Meiji-za*. From the play, *The Kōshū War Strategy and the Takeda Clan Preparing for Battle*. Color woodblock. Signed and chop. Oban triptych. [52694c] \$1,400.





106. Charles LUCE (American, b. 1947) *Suit Trap*. Mixed serigraph on mulberry paper with 42 colors. July 1984. Edition 32/50. Stamped with the artist's mark. 35 x 22 (image), 37¾ x 25½ (special handmade sheet). [52722c] \$950. Also available framed.



107. Sydney Mackenzie LITTEN (English, 1887-1934) *Winter Quarters, Southwick*. Etching. Signed. Edition 40/75. 8 x 10⁷/₈ (plate), 11½ x 16⁵/₈ (sheet). [52520c] \$325.



108. Ernest Stephen LUMSDEN (British, 1883-1945) *Central Ghat*. Etching. Signed. 1929. Edition 2/65. Reference: Cat. #317. 9⁷/₈ x 15 (plate), 11 x 17⁵/₈ (sheet). [52199c] \$300.



109. Ernest Stephen LUMSDEN (British, 1883-1945) *The Ronda*. Etching. Signed. 1929. Edition 16/55. 9³/₈ x 12⁷/₈ (plate), 10¾ x 14 (sheet). [52200c] \$325.

110. (Left) Ernest Stephen LUMSDEN (British, 1883-1945) *Paris in Construction, No. 5: Sacré-Coeur*. Etching. 1907. Impression #14. Reference: Lumsden 44. 8½ x 4⁷/₈ (plate), 8⁷/₈ x 5¼ (sheet). [52201c] \$275.



111. Barry MOSER (American, b. 1940) *Totem*. Wood engraving. Initialed. 2020. Date of block: 1973. Edition 250. $2\frac{7}{8} \times 3\frac{1}{2}$ (block), $4\frac{1}{2} \times 5$ (folded, card size). [52750] \$85.



112. Samuel L. MARGOLIES (American, 1897-1974) *Babylon (Bridge to Babylon)*. Etching and aquatint. Signed. 1949. Edition 200. $2\frac{3}{8} \times 3$ (plate), 7×8 (sheet). [52475c] \$1,000.



113. William Westley MANNING (English, 1868-1954) *The Hampshire Stour*. Aquatint. Signed. Tape residue at top margin edge. 7×10 (plate), $11 \times 14\frac{1}{2}$ (sheet). [52135c] \$250.



114. Reginald MARSH (American, 1898-1954) *U.S. Marine*. Etching. Signed. 1934. Impression #19. Reference: Sasowsky 144. $8 \times 5\frac{7}{8}$ (plate), $10\frac{1}{4} \times 7\frac{7}{8}$ (sheet). [52538c] \$850.



115. Reginald MARSH (American, 1898-1954) *Loco-Erie Watering*. Etching. Signed. 1929. Reference: Sasowsky 85 iv. $6\frac{7}{8} \times 9\frac{7}{8}$ (plate), 10×13 (sheet). [51892] \$2,000.



116. Bernardo DADDI / MASTER OF THE DIE (Italian, c. 1512-1570) *Aeneas Rescuing Anchises at the Fall of Troy*. Engraving after Rafael. Reference: B. 72, Mason 51. Cropped lower margin, lacking text panel at bottom of plate. 8⁷/₈ x 7¹/₄ (thread margins). [52268c] \$325.



117. Stephen MCMILLAN (American, b. 1949) *Colors*. Aquatint. Signed. 2020. Edition 8/200. 10⁷/₈ x 7³/₄ (image), 16¹/₂ x 13¹/₂ (sheet). [344761] \$300.

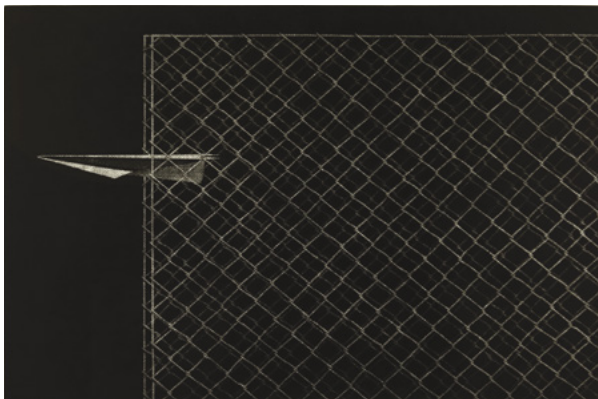


118. Mortimer Luddington MENPES (Australian/British, 1855-1938) *Westminster Abbey*. Etching and drypoint. Signed. 1910/1911. Reference: Morgan 347. 8³/₄ x 12³/₈ (plate), 11¹/₂ x 14¹/₄ (sheet). [51722c] \$320.



119. Mortimer Luddington MENPES (Australian/British, 1855-1938) *Constance Collier*. Drypoint with chine-collé. Signed. Monogram in the plate. 1898-1899. Impression #8 verso. Reference: Morgan 197. 9⁷/₈ x 8 (plate), 22 x 15 (sheet). [51718c] \$500.

120. Yuji MORITA (Japanese/American, b. 1955) *Paper Airplane VI*. Mezzotint and engraving. Signed. 1985. Edition 2/35. 11³/₄ x 17³/₄ (plate). [52720c] \$485. Also available framed.





121. Kumi OBATA (Japanese, b. 1966) *Temperature of Bed* 寝床の温度. Etching. Signed. Edition 2/20. 9⁵/₈ x 10¹/₄ (plate), 13⁷/₈ x 14⁵/₈ (sheet). [344900] \$275.



122. Nuremberg Chronicle Page. Woodcuts in text. 1493. German Edition. Provenance: Ferdinand Roten Galleries. 17¹/₂ x 12¹/₄ (sheet). [52526c] \$200.

123. (Left) Claes OLDENBERG (American, b. 1929) *Picasso Cufflink*. From *Homage to Picasso*. Color lithograph. Signed. 1974. Artist Proof. Edition 12/15. Reference: Axson and Platzker 113. Published by: Propyläen Verlag, Berlin. 28 x 24 (image). [52707c] \$1,500. Also available framed.



124. Peter MILTON (American, b. 1930) *Daylilies*. Resist ground etching, engraving, and photo transfer. Signed. 1975. Edition 160. 20 x 32 (image/sheet). [301] Two different impressions available, with unique conditions and prices. Please inquire.



125. Max Hermann PECHSTEIN (German, 1881-1955) *Mutter und Sohn*. Lithograph. Signed, initialed, and dated in the stone. 1945. Edition 40/100. Graphic Verlag stamp at lower left corner verso. Reference: Krüger L. 411. 10¼ x 6 (image), 19⅝ x 12¾ (sheet). [52706c] \$785.



126. Elizabeth PEYTON (American, b. 1965) *John*. Lithograph on cream wove paper. Signed. 2000. Edition 207/350. Published by: Public Art Fund, NY. 24 x 19 (image/sheet). [52387] \$1,250.



127. Malcolm OSBORNE (Scottish 1880-1963) *St. Stephens'*. Drypoint. Signed. 10 x 5½ (plate), 13¼ x 7⅞ (sheet). [52196c] \$300.

Laura Piranesi (daughter of G.B. Piranesi) was, with her brother Francesco, an important contributor to the etchings of Rome produced by the workshop under the Piranesi name.

We will soon be publishing a catalog of available works by Piranesi, which will be available in the catalogs section of our website. Please reach out to us with your interest.



128. Laura PIRANESI (Italian, 1754-1789) *Veduta del Tempio di Antonio, oggi Dogana di Terra*. Etching. Minor soil and soft creases in margins. Spot in bottom margin. 5½ x 8 (plate), 9¾ x 15 (sheet). [52318c] \$285.



129. Marina RICHTEROVA (Czech, b. 1962) *Requiem*. Color etching. Signed. 1990. Edition 81/100. 14⁷/₈ x 8 (plate), 20³/₈ x 12¹/₂ (sheet). [52487c] \$185.



130. Jenny ROBINSON (British/American, b. 1957) *Parcel B Hunters Point, 4.00 pm*. Laser cut woodcut from watercolor drawing. Signed. 2017. EV 7/10. 35¹/₂ x 23³/₄ (image/sheet). [335726] \$800.



131. Marina RICHTEROVA (Czech, b. 1962) *Warden*. Etching and drypoint. Signed. 1996. Edition 60/70. 7⁷/₈ x 10¹/₈ (plate), 12¹/₈ x 14⁵/₈ (sheet). [52497c] \$375.

132. (Left) Marina RICHTEROVA (Czech, b. 1962) *King Lear, Act III (Take Off the Mask)*. Color etching. Signed. 1997. Edition 49/100. 13⁵/₈ x 8¹/₈ (plate), 19 x 12⁵/₈ (sheet). [52495c] \$200.



133. Abigail RORER (American, b. 1949) *Phoebe*. Relief engraving. Signed. Edition 80/100. 2 x 3 (image), 7 x 6 $\frac{5}{8}$ (sheet). [344595] \$85.



134. Abigail RORER (American, b. 1949) *Love Song*. Relief engraving. Signed. Edition 24/50. 2 $\frac{1}{2}$ x 3 $\frac{1}{4}$ (image), 5 x 7 (sheet). [344593] \$80.

Please ask for our catalog of Rouault's complete *Miserere* series or view it on the catalogs section of our website. Many works are available for purchase.



135. Georges ROUAULT (French, 1871-1958) *L'aveugle parfois a consolé le voyant (Sometimes the blind have comforted those that see)*. Plate 55 for the *Miserere*. Mixed etching. None were signed. Edition of 450. Ambroise Vollard watermark at lower right. Printed by: Jacquemin, 1922-1927. Published by: Société d'Édition l'Étoile Filante, Paris 1948. 23 $\frac{1}{4}$ x 17 $\frac{1}{4}$ (image), 25 $\frac{1}{2}$ x 19 $\frac{3}{4}$ (sheet). [51450] \$2,000.



136. Félicien ROPS (Belgian, 1833-1898) *Mors Syphilitica*. Drypoint and aquatint. Signed in red pencil. 1905. Reference: Exsteens 353. Hinge residue, front and verso. Fold at top and bottom of wide margins. 8 $\frac{1}{2}$ x 6 (plate), 21 $\frac{3}{4}$ x 13 $\frac{3}{4}$ (sheet). [52705c] \$1,250.



137. Louis Conrad ROSENBERG (American, 1890-1983) *Campo dei Gesuiti, Venice*. Drypoint. Signed. 1927. Edition 100. $6\frac{7}{8} \times 10\frac{1}{8}$ (plate), $7\frac{1}{2} \times 12\frac{1}{8}$ (sheet). [52362c] \$320.

138. Louis Conrad ROSENBERG (American, 1890-1983) *St. Etienne, Toulouse*. Etching. Signed. Four small spots of tape glue residue in margins. $10 \times 4\frac{1}{2}$ (plate), $16\frac{5}{8} \times 10$ (sheet). [52363c] \$225.



139. Louis Conrad ROSENBERG (American, 1890-1983) *Temple of Minerva, Rome*. Drypoint. Signed. Tape glue residue in margins. $8\frac{7}{8} \times 11\frac{3}{8}$ (plate), $10\frac{3}{4} \times 15$ (sheet). [52371c] \$300.



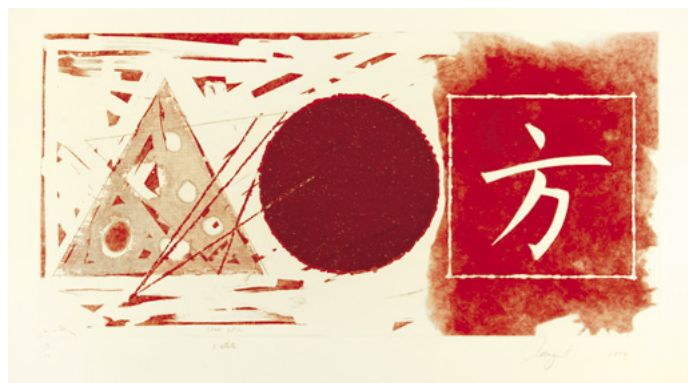
140. Johannes (Jan) SADELER I (Dutch, 1550-1600) *The Descent from the Cross*. Engraving after M. de Vos. $6\frac{7}{8} \times 9\frac{1}{2}$ (plate). Trimmed to the platemark. [52257c] \$285.



141. Sir Henry George RUSHBURY (British, 1889-1968) *Bellhanger Quarry*. Drypoint and engraving. Signed. Reference: Wright 34. Tape glue residue in margins. $8\frac{1}{2} \times 12\frac{7}{8}$ (plate), $11\frac{1}{4} \times 17$ (sheet). [52335c] \$275.



142. James ROSENQUIST (American, 1933-2017) *Carousel*. Color aquatint. Signed. 1978. Edition 32/78. 17 $\frac{5}{8}$ x 36 $\frac{3}{4}$ (plate). [52728c] \$1,800. Also available framed.



143. James ROSENQUIST (American, 1933-2017) *Star Leg*. Etching, engraving, and aquatint. Signed. Edition 56/78. Printed by: Charles Levine. 17 $\frac{5}{8}$ x 35 $\frac{3}{4}$ (plate), 22 $\frac{3}{4}$ x 39 $\frac{3}{4}$ (sheet). [52727c] \$1,250.



144. James ROSENQUIST (American, 1933-2017) *Tin Roof*. Etching and aquatint. Signed. 1978. Edition 53/78. Second state. Reference: Glenn 114 A. 17 $\frac{3}{4}$ x 35 $\frac{3}{4}$ (plate), 22 $\frac{3}{4}$ x 39 $\frac{3}{4}$ (sheet). [52726c] \$1,250.



145. Anton Friedrich Josef SCHÜTZ (German/American, 1894-1977)
New York Bridges. Drypoint. Signed.
6³/₈ x 12⁷/₈ (plate), 11¹/₄ x 12⁷/₈ (sheet).
[51775c] \$420.



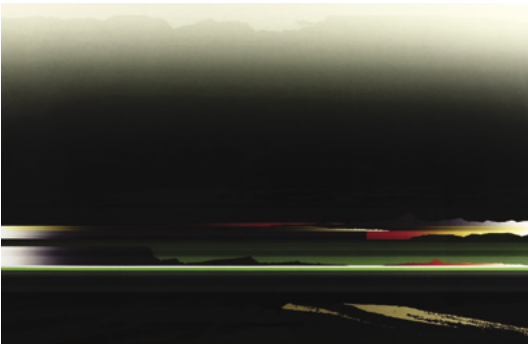
146. Noboru SAWAI (Japanese/Canadian, 1931-2017)
Funeral. Mixed intaglio. Signed and stamped. 1973.
Edition 28/100. 17¹/₂ x 23³/₄ (plate), 20 x 23³/₄ (sheet).
[52440c] \$385.



147. Guillermo Silva SANTAMARIA (Colombian, 1921-2007) *Museo de Arte Moderno*. Color lithograph. Signed. 1977. Edition 48/220.
14 x 26⁵/₈ (image/sheet). [52580c] \$450.



148. Ben SHAHN (American, 1898-1959) *Of Light, White Sleeping Women in Childbed*.
From *The Rilke Portfolio: For the Sake of a Single Verse*. Lithograph on Velin d'Arches.
Signed in the stone. 1968. Edition 750.
Reference: Prescott 133. Printed by:
Mourlot. 9¹/₂ x 15¹/₂ (image), 22¹/₂ x 18¹/₄ (sheet). [52681c] \$325.



149. Tetsuro SAWADA (Japanese, 1935-1999) *Flash Zone*.
Serigraph. Signed. Edition 79/100. 16³/₄ x 26 (image). [52723c]
\$1,200. Also available framed.

150. Li SHUANG (Chinese, b. 1957)
Title Unknown (Three Figures). Collage
 diptych. c. 1986. 108 a & b verso.
 19¾ x 24½ (two sheets together),
 22 x 27 (backing sheet). [52730c]
 \$3,200. Also available framed.



151. Kurt SELIGMANN (Swiss/
 American, 1900-1962) *Le Pâtre*. From
Les Vagabondages Heraldiques.
 Etching and aquatint. Edition 99/110.
 Provenance: Ferdinand Roten
 Galleries, Baltimore. 14¼ x 10¾
 (plate), 19¾ x 15 (sheet). [52677c]
 \$325.



152. Paul SIGNAC (French, 1863-1935) *Le Pont des
 Artes avec Remorqueurs*. Etching on heavy Japan paper.
 Signed in the plate. 1927. Edition 250. Reference:
 Kornfeld 24. 5 x 7¾ (plate), 10 x 12¾ (sheet). [52689c]
 \$785.



153. Tavik František ŠIMON (Czechoslovakian, 1877-
 1942) *Toledo, Spain*. Etching. Signed. Impression #63.
 Red cachet initials stamp. 7¾ x 10¾ (plate), 11¾ x 12¾
 (sheet). [52498c] \$285.



154. Sir Frank SHORT (English, 1857-1945)
The Rope-Walk, Spittal Bridge (Whitby). Etching.
 Signed. Reference: Hardie 267. 5¾ x 5¾ (plate),
 10 x 9½ (sheet). [52166c] \$185.



155. John SLOAN (American, 1871-1951) *Nude at Bedside*. Etching. Signed. Reference: Morse 264 iii/iii. 5½ x 7 (plate), 9¾ x 12½ (sheet). [52525c] \$1,100.



156. Douglas Ian SMART (English, 1876-1970) *Thames Tugs, No. 1*. Etching and drypoint. Signed. 5½ x 8¾ (plate), 7¾ x 9¼ (sheet). [52182c] \$300.



157. Douglas Ian SMART (English, 1876-1970) *Thames Derelicts*. Etching. Signed. 5¾ x 8¾ (plate), 7½ x 10¾ (sheet). [52183c] \$300.



158. Moisse SMITH (American, 1929-1993) *Sierra Nevada*. Etching. Signed. 1972. Edition 10/60. 19 x 27¼ (plate), 22 x 29½ (sheet). [52577c] \$325.



159. Moses SOYER (Russian/American, 1899-1975) *Model Applying Make-up*. Lithograph. Signed. Dedicated "To Mabel & Lawrence Hawkins, M.D." Four small repaired tears at margin edge and hinge residue at top margin edge, verso. 16 x 9 (image), 10 x 11 $\frac{3}{4}$ (sheet). [52499c] \$650.



160. William STRANG (English, 1859-1921) *The Book Stall*. Etching. Signed and printed by David Strang. 4 $\frac{3}{4}$ x 5 (plate), 6 $\frac{3}{8}$ x 5 (sheet). [52116c] \$225.



161. William STRANG (English, 1859-1921) *Jessie O'Ardressen*. Etching. Signed by David Strang. 1897. First state. Reference: David Strang 430 i/iii. 4 x 6 (plate), 5 $\frac{1}{4}$ x 7 $\frac{3}{8}$ (sheet). [52107c] \$225.



162. William STRANG (English, 1859-1921) *The Herds*. Etching. Signed and printed by David Strang. Reference: David Strang 23. 4 $\frac{3}{4}$ x 4 $\frac{1}{8}$ (plate), 6 $\frac{3}{8}$ x 5 $\frac{1}{8}$ (sheet). [52110c] \$225.



163. William STRANG (English, 1859-1921) *Castel Nuovo, Naples*. Etching. Signed. Reference: David Strang 679. Trace of hinge residue in margins. 9 $\frac{7}{8}$ x 14 (plate), 13 $\frac{3}{8}$ x 17 $\frac{5}{8}$ (sheet). [52102c] \$225.



164. Rufino TAMAYO (Mexican, 1899-1991) *Nocturno (Nocturne)*. Color etching printed on Guarro paper. Signed. 1975. Edition 65/75. Reference: Pereda 183. Published by: Ediciones Polígrafa, Barcelona. 22 x 29½ (image/sheet). [52575c] \$3,200.



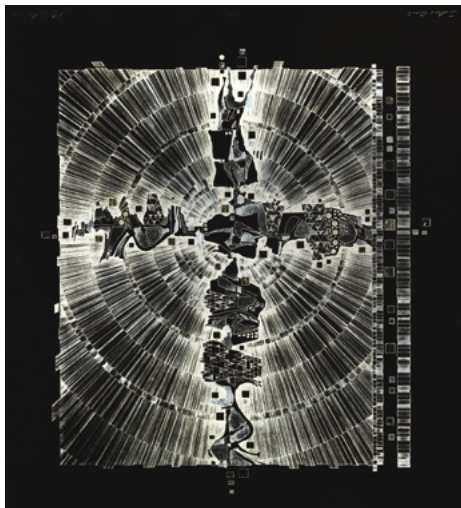
165. Rufino TAMAYO (Mexican, 1899-1991) *Dos Cabezas*. Color etching printed on Guarro paper. Signed. 1975. Edition 65/75. Reference: Pereda 184. Published by: Ediciones Polígrafa, Barcelona. 22 x 29½ (image/sheet). [52576c] \$3,000.



166. Rufino TAMAYO (Mexican, 1899-1991) *Hombre con Manzana (Man with Apple)*. Color lithograph printed on Guarro paper. Signed. 1973. HC Edition, 10 impressions. Reference: Pereda 141. Published by: Ediciones Polígrafa, Barcelona. 22 x 30 (image/sheet). [52573c] \$2,800.



167. Rufino TAMAYO (Mexican, 1899-1991) *Torso*. Etching. Signed. 1975. Edition 65/75. Reference: Pereda 176. Published by: Ediciones Polígrafa, Barcelona. 29½ x 22 (image/sheet). [52574c] \$2,600.



168. J. B. THOMPSON (American, 1932-1984) *Stairs End*. Color lithograph with foil additions. Signed. Edition 54/125. 22½ x 20¾ (image). [52721c] \$725. Also available framed.



169. Arthur Ralph Middleton TODD (English, 1891-1966) *The Listener*. Drypoint. Signed. 1930. The Print Collector's Club Presentation plate, 1930. 6¼ x 5 (plate), 10 x 8 (sheet). [52059c] \$225.



170. Arthur Ralph Middleton TODD (English, 1891-1966) *The Silhouette*. Drypoint. Signed. Impression 60. 7 x 5¼ (plate), 12 x 8¾ (sheet). [52541c] \$175.



171. (Left) Jacques VILLON (French, 1875-1963) *Three Artists Holding Large Brushes*. Part of an original ink drawing. Accompanied by signed certification No. 1833, November 1965, by expert Paul Cailac. 5⁷/₈ x 6³/₈ (image/sheet). [52682c] \$500.



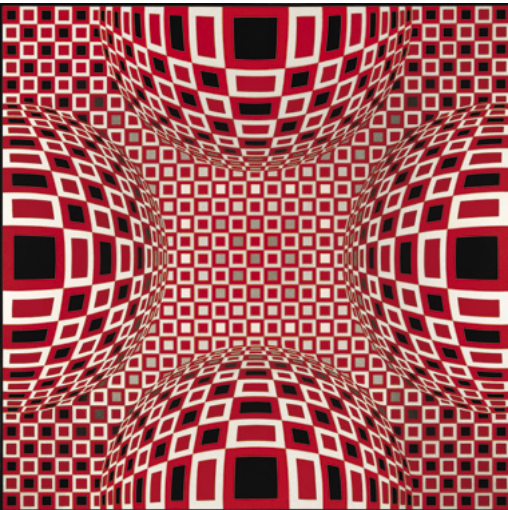
172. Sidney TUSHINGHAM (English, 1884-1968) *Plaza del Corriollo, Salamanca*. Drypoint. Signed. Glue residue in margins. 11¹/₂ x 9⁷/₈ (plate), 17³/₄ x 13¹/₂ (sheet). [52326c] \$275.



173. Geri WADDINGTON (British, b. 1953) *Trio*. Wood engraving. Signed. Edition 68/100. 2¹/₄ x 4¹/₄ (image), 5 x 7¹/₄ (sheet). [344773] \$90.



174. Geri WADDINGTON (British, b. 1953) *The Storks*. Wood engraving. Signed. Edition 15/50. 4³/₄ x 4 (image), 10¹/₂ x 7⁵/₈ (sheet). [344781] \$120.



175. (Left) Victor VASARELY (Hungarian/French, 1908-1997) *Four Globes in Red*. Silkscreen. Signed. 1980. Artist Proof. Regular edition 125. 26 x 26 (image). [52724c] \$1,500. Also available framed.



176. William WALCOT (Russian/English 1874-1943) *Kom Ombo*. Drypoint. Signed. Edition 16/75. 6¼ x 8 (plate), 9½ x 13 (sheet). [52290c] \$385.



177. Herbert Gordon WARLOW (English, 1885-1942) *Peterborough Cathedral*. Etching. Signed. Edition 5/90. 8⅞ x 5½ (plate), 11⅞ x 9 (sheet). [52329c] \$300.

178. (Left) William WALCOT (Russian/English, 1874-1943) *Hadrian Visiting Salonika*. Drypoint. Signed. 3⅞ x 5 (plate), 10½ x 9 (sheet). [52289c] \$300.



179. Herbert Gordon WARLOW (English, 1885-1942) *A Street in Cairo*. Etching. Edition 38/75. 7¾ x 5⅞ (plate), 11¼ x 9⅞ (sheet). [52332c] \$325.



180. Herbert Gordon WARLOW (English, 1885-1942) *St. Laurent, Rouen*. Etching. Signed. 8⅞ x 4¼ (plate), 11⅞ x 9 (sheet). [52327c] \$325.



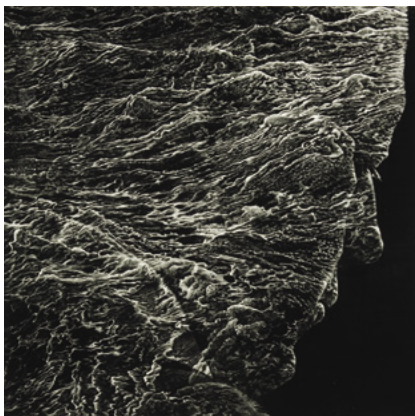
181. Lynd WARD (American, 1905-1985) *Undercliff*. Wood engraving. Signed. 1948. Edition 200. 8 x 6 (block), 13 x 10 (sheet). [52491c] \$425.



182. Stan WASHBURN (American, b. 1943) *It Seemed So to Me*. Etching. Signed. 1974. Edition 7/90. Provenance: Van Straaten Gallery, Chicago. 15 $\frac{7}{8}$ x 11 $\frac{1}{4}$ (plate), 21 $\frac{1}{4}$ x 14 $\frac{7}{8}$ (sheet). [52551c] \$325.



183. Antonie WATERLOO (Dutch, 1609-1690) Four etchings from the *Folio of Five Landscapes*. Collector's stamps verso: Herzog Von Arenburg (Lugt. 567) and Heinrich Schwarz, Wien (Lugt. 1372). Thread margins. 4 $\frac{1}{2}$ x 5 $\frac{5}{8}$ (plate/sheet). [52220c-23c] \$850 for the group of four.



184. Art WERGER (American, b. 1955) *The Act of Forgetting*. Mezzotint. Signed. 2018. Edition 39/60. 12 x 12 (plate), 17 x 15 (sheet). [345538] \$450.

185. (Below) Stow WENGENROTH (American, 1906-1978) *Sea's Strange Calm*. Lithograph. Signed. 1931. Impression #3. Total edition of 54. Reference: Stuckey #10. 7¼ x 12⅞ (image), 11⅛ x 15½ (sheet). [52540c] \$625.



186. Frank WRIGHT (American, b. 1932) *Don Quixote and Sancho Panzo*. Etching and aquatint. Signed. 1967. Edition 58/70. 19⅜ x 15¾ (plate), 25¾ x 19¾ (sheet). [52560c] \$285.



187. Francisco ZÚÑIGA (Costa Rican/Mexican, 1912-1998) *La Calera (The Lime Seller)*. Lithograph. Signed. 1977. Edition 46. 18 x 13½ (image), 20½ x 15 (sheet). [52719c] \$600. Also available framed.



188. James Abbott McNeill WHISTLER (American, 1834-1903) *The Lime Burner*. Etching and drypoint printed on thin laid paper. Signed and dated in the plate. 9⁷/₈ x 6⁷/₈ (plate), 13⁵/₈ x 9⁷/₈ (sheet). [52477c] \$3,600.



190. Zhizhong ZHANG (Chinese, b. 1946) *Lotuses*. Painting, backed, with silk border. With signature and chop. 40½ x 32 (image), 49½ x 44 (sheet). [52739] \$3,200.



189. Jim WESTERGARD (Canadian, b. 1939) *The Old One*. Wood engraving. Signed. Edition 6/25. 5¼ x 4¼ (image), 8 x 6½ (sheet). [344567] \$100.

Dion Pickering Zwirner is a contemporary Bay Area (now Northwest) artist, working on paper and canvas. A selection of her work can be viewed on her artist's page on our website, or via PDF download of her catalogs in our catalogs section of the site.



191. Dion Pickering ZWIRNER (American, b. 1947) *Aki 1*. Mixed media on paper. Signed. 2010. 13 x 6 (image/sheet). [45742] \$900.



192. Frank P. WHITING (American, 1873-1952) *Napoleon Bridge, Paris*. Etching. Signed. 8³/₈ x 12³/₈ (plate), 12³/₄ x 15⁷/₈ (sheet). [51755c] \$250.

CATALOG LIST NO. 102–FALL 2020

CONTACT: Rebecca McDonald, (206) 624-7684
or rebecca@daidsongalleries.com

An additional impression may be available for certain works. Listed prices apply to the impression shown. Prices may vary for additional impressions. All items are guaranteed as described. Certificate of authenticity is available upon request. Please contact the gallery with questions or to discuss a work in detail. **All dimensions are given in inches, height precedes width.** Orders are shipped promptly upon receipt of full payment. Works are normally shipped insured via UPS unless other arrangements are specified. Shipping charges vary and are dependent on size and value of items ordered. Washington State residents must add appropriate sales tax. Items may be sent "on approval" beginning two weeks after initial catalog release. Works may be returned to the gallery for any reason within two weeks of purchase for a full refund less shipping. Returned works should be securely packed and fully insured.

Please inform the gallery of any special collecting interests. Davidson Galleries is willing to consider purchasing or consigning fine original prints individually or as collections.

Davidson Galleries is a charter member of the **International Fine Print Dealers Association** and is committed to its strict ethical standards.

IFPDA MEMBER

DOWNLOADABLE CATALOGS AVAILABLE

As part of our commitment to produce less waste, we are proud to offer our catalogs as downloadable PDFs through **daidsongalleries.com**. Visit the catalogs page on the website to download free of charge.

If you would prefer to continue receiving our semi-annual printed catalogs by mail, **annual subscriptions are available for \$12**, deductible from your first catalog purchase. Please contact the gallery for details.



Join our bi-monthly
email newsletter!

DAVIDSON GALLERIES

313 Occidental Avenue South | Seattle, Washington 98104
www.davidsongalleries.com | Open Tuesday-Saturday 11-5:30

CHANGE SERVICE REQUESTED

CATALOG LIST NO. 102—FALL 2020



193. **Joe SAM** (African American, b. 1939) *Swimmer*. Painted wood sculpture. Signed front and verso. 1992. 36 x 11 x 1. [52718c] \$850.

\$6.00