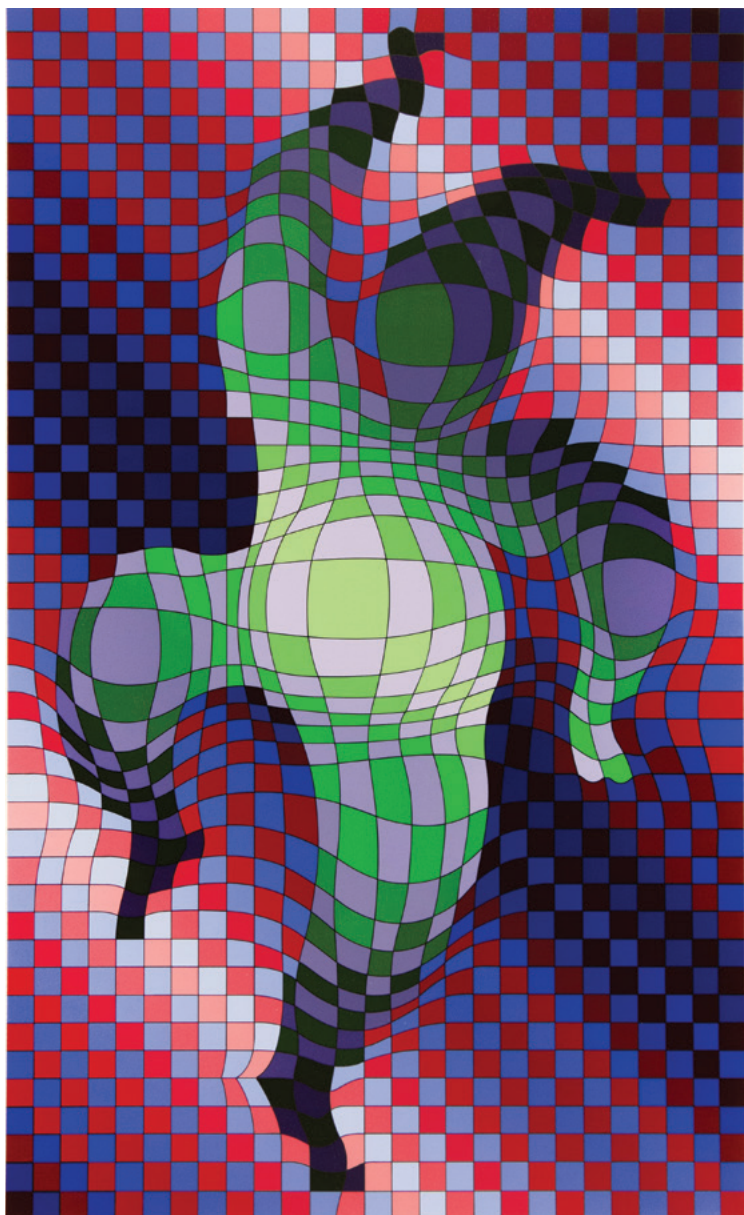


50TH ANNIVERSARY



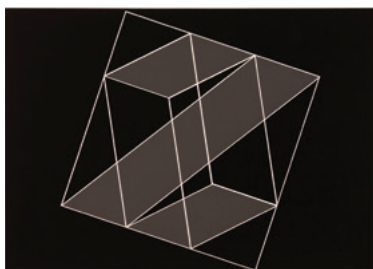
DAVIDSON GALLERIES

COVER IMAGE: Victor VASARELY (Hungarian / French, 1908-1997) *Harlequin*. Color serigraph. Signed. Edition 67/250. Very faint spots of foxing in left margin. Hinge residue verso. 26 x 16 (image), 30½ x 19¾ (sheet). [54271c] \$750.



1. Kenneth Miller ADAMS

(American, 1897-1966) *The Miner*. Offset lithograph. Signed. 1950. Provenance: Gerald Peters Gallery, Santa Fe. Professionally cleaned. 11¾ x 7¾ (image), 12¾ x 7¾ (showing). [55006c] \$250. Also available framed.



2. Josef ALBERS (German-born, American, 1888-1976) *Portfolio II, Folder 16*. From *Formulation: Articulation Portfolio*. Serigraph. 1972. Edition of 1000. Published by Harry N. Abrams Inc. & Ives-Sillman, Inc. 9¼ x 14 (image), 15 x 20 (sheet). [52384] \$700.



3. Ivan Le Lorraine ALBRIGHT (American, 1897-1983) *Self Portrait at 55 East Division Street*. Lithograph. Signed. 1947. Edition of 250. Printed by George C. Miller. Published by Associated American Artists. Awarded a prize for the 2nd Annual National Fine Print Competition. Mild staining verso. 14¼ x 10½ (image), 16¾ x 12¾ (sheet). [54698c] \$1,000.



4. Malvin Marr ALBRIGHT (American, 1897-1983) *Victoria*. Lithograph. Signed. 1947. Published by Associated American Artists. Toned verso. 8½ x 12¾ (image), 11¼ x 16 (sheet). [54626c] \$325.



5. Glen E. ALPS (American, 1914-1996) *A Blend of Lace*. Relief rainbow roll and collagraph. Signed. 1985. 29 x 23 (image/sheet). [53552c] \$950.



6. Mariko ANDO (Japanese, b. 1969) *Everlasting Love*. Etching with chine-collé and hand-coloring. Signed. 2015. AP edition of 20. 8 x 8 (image), 15 x 12½ (sheet). [348489] \$360.



7. Tetsuo AOKI (Japanese, b. 1940) *People*. Woodcut. Signed. Edition of 15. 20½ x 15½ (image), 25 x 18 (sheet). [347973] \$400.



8. Benny ANDREWS (American, 1930-2006) *New York Café*. Lithograph. Signed. 1967. Edition 214/250. Published by Associated American Artists. 10½ x 14¾ (image), 13 x 17½ (sheet). [54457c] \$700.



9. Frank ARMINGTON (Canadian, 1876-1941) *Arch de Triomphe, Paris*. Drypoint. Signed. 1924. Edition 1/100. Faintly toned. Small losses along upper margin edge. 8¾ x 12¼ (plate), 9¾ x 14½ (sheet). [54607] \$385.



10. Caroline ARMINGTON (Canadian, 1875-1939) *Notre Dame de Paris et le Petit Pont*. Etching. Signed. 1912. Edition 3/100. Faintly toned at upper and lower margin edges. Laid paper, chain lines visible. 12½ x 9½ (plate), 17¼ x 11 (sheet). [54605] \$400.



11. Caroline ARMINGTON (Canadian, 1875-1939) *Notre Dame de Paris et Pont St. Michel*. Etching. Signed. 1935. Edition 12/100. Minor discoloration in margins. 8¾ x 12¼ (plate), 9¾ x 13½ (sheet). [54609] \$325.



12. Mio ASAHI (Japanese, b. 1957) *Master of the Pteosaur*. Etching and aquatint. Signed. 2009. Edition of 35. Crease at upper right margin corner. 19½ x 15½ (image), 25½ x 21½ (sheet). [346344] \$400.



14. Peggy BACON (American, 1895-1987) *Country Dressmaking*. Drypoint. Signed and titled in pencil. Date of Plate 1925. Reference: Flint 55. 7⅞ x 5 (plate), 13¾ x 11 (sheet). [42536] \$1,500.



15. Paula BARRAGÁN (Ecuadorian, b. 1963) *Vallecito*. Intaglio. Signed. 2004. EV. Edition of 50. 4¾ x 4¾ (image), 11 x 10 (sheet). [44499] \$275.



13. John James AUDUBON (American, 1785-1851) *Common Buzzard*. From *The Birds of America*, No. 75, Plate 372. Engraving and aquatint with hand-coloring. Watermark. 1837. Havell Edition. Some light spots in left and right margins, small spot at left edge of plate, a few small spots within the image. Good color. 27 x 23½ (plate), 39½ x 26½ (sheet). [54887c] \$9,000. Also available framed.



16. Michael BARNES (American, b. 1969) *Breaking of the Stones*. From *Steindruck München*. Lithograph. Signed. 2020. Edition of 12. 17 x 19½ (image), 19½ x 22 (sheet). [346367] \$900.



17. Leonard BASKIN (American, 1922-2000) *Tobias and the Angel*. Wood engraving. Signed. 1958. Edition 189/300. Printed by Gehenna Press, Northampton. Published by International Graphic Arts Society. Reference: Fern 367. 14 $\frac{7}{8}$ x 14 $\frac{7}{8}$ (block), 17 $\frac{3}{4}$ x 20 $\frac{7}{8}$ (sheet). [54699c] \$1,200.



18. Leonhard BECK (German, 1480-1542) *Image #83*. From *Theuerdank*. Woodcut with text verso. Watermark. 1517. Thread margins. 6 $\frac{1}{4}$ x 5 $\frac{1}{2}$ (block/sheet). [54518c] \$325.



19. Marius Alexander Jacques BAUER (Dutch / English 1867-1932) *Ali Baba*. Etching. Initialed. 1894. Edition No. 70. Margins slightly soiled. 17 $\frac{3}{8}$ x 12 $\frac{3}{4}$ (plate), 21 $\frac{3}{4}$ x 17 (sheet). [54491c] \$300.



20. Hans Sebald BEHAM (German, 1500-1550) *Coat of Arms of Hector Pomer*. Woodcut. Watermark. 1525. Reference: Pauli 1352, Dodgson 159. Provenance: Albert A. Feldman, Collector's stamp verso. Margins trimmed to block. 11 $\frac{1}{8}$ x 7 $\frac{3}{4}$ (block/sheet). [54517c] \$625.



21. Albert de BELLEROCHÉ (Welsh / English, 1864-1944) *Invitation*. Lithograph. Signed. 1908. Good condition. 4 $\frac{1}{2}$ x 5 $\frac{1}{4}$ (image), 5 $\frac{1}{2}$ x 7 $\frac{1}{2}$ (sheet). [50201c] \$250.



22. Albert de BELLEROCHÉ (Welsh / English, 1864-1944) *La Toilette, Julie de Belleruche*. Lithograph. Initialed. 1911. Good condition. 14½ x 10½ (image), 15½ x 11¼ (sheet). [49551c] \$650.



23. Albert de BELLEROCHÉ (Welsh / English, 1864-1944) *Sleeping Dog*. Charcoal drawing. Initialed. Lightly foxed verso. 10⅝ x 13⅝ (image/sheet). [54429c] \$720.



24. George W. BELLOWS (American, 1882-1925) *Irish Grandmother*. Lithograph. Signed and signed in the stone. 1923. Edition of 90. Reference: Mason 155. Printed by Bolton Brown. Minor losses at upper margin corner. 9¾ x 8¼ (image), 12 x 9½ (sheet). [54499c] \$750.



25. Hans BELLMER (German, 1902-1975) *Femme inversees (II)*. Engraved by Cécile Reims. After Bellmer's drawing *Miroir des songes (Mirror of Dreams)*. Color engraving. Signed. 1971. Date of Impression 1974. EA. Printed by Atelier Boileau, Montargis. Published by Enrico Magaglio, Paris. Reference: Lauren Laz 316. 19¾ x 12¾ (plate), 25⅝ x 18¾ (sheet). [53605c] \$575.



26. Thomas Hart BENTON (American, 1889-1975) *Island Hay*. Lithograph. Signed. 1945. Edition of 250. Published by Associated American Artists. 10 x 12⅝ (image), 12 x 16 (sheet). [54620c] \$3,200.



27. Igor BENCA (Slovakian, b. 1958) *Alone*. Color mezzotint. Signed. 1989. Edition 49/60. 25½ x 19 (plate), 35¼ x 24½ (sheet). [54796c] \$420.



29. Marit BERG (American, b. 1966) *Small Mountain Hare*. Linocut. Signed. 2022. Edition of 50. 9 x 11 (image), 14¼ x 16 (sheet). [349207] \$350.



31. Jack BILANDER (American, 1919-2008) *Folksinger*. Etching and aquatint. Signed. Edition 16/250. Published by Associated American Artists. 11⅞ x 9⅝ (plate), 15⅞ x 11⅞ (sheet). [54483c] \$275.



28. Ben BERES (American, b. 1976) *Forgotten*. Marbled monoprint. Signed verso. 2021. Edition 1/1. 30 x 22¼ (image/sheet). [346597] \$600.



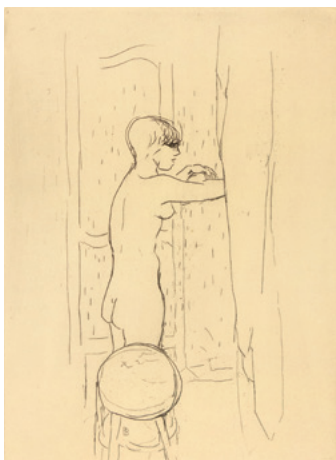
30. Basilius BESLER (German, 1561-1629) *Daisy (I), Yellow crown daisy (II), Wild crown daisy (III)*. From *Florilegium*, Plate 209. Copper engraving with hand-coloring. Latin text verso. 19 x 15⅞ (plate), 22 x 17½ (sheet). [53993c] \$2,800. Also available framed.



32. Isabel BISHOP
(American, 1902-1989)
Boy's Head, Mouth Open.
Etching. Signed. Blindstamp
in lower right margin corner.
1934. Edition XIX/XXV.
Reference: Teller 16. 4 x 3
(plate), 13 $\frac{1}{8}$ x 10 (sheet).
[54408c] \$275.



33. Hans BURGKMAIR (German, 1473-
1531) *Illustration for Marx Treitzsaurwein,*
Der Weisskönig (The White King).
Woodcut. 1775. 8 $\frac{3}{4}$ x 7 $\frac{3}{4}$ (image/sheet).
[26127] \$185.



34. Alexander CALDER (American,
1898-1976) *Joys of the Neophyte.*
Lithograph. Signed.
Edition 73/100.
Creasing on lower
left edge just within
image. 28 $\frac{1}{8}$ x 20 $\frac{3}{8}$
(image/sheet).
[54506c] \$2,000.



35. Pierre BONNARD (French, 1867-1947)
Woman at her Toilette. For the artist's book
Bonnard by Charles Terrasse. Etching.
Monogram in the plate. 1927. Edition of
2420. Reference: Bouvet 107. 8 $\frac{1}{2}$ x 6 $\frac{1}{4}$
(plate), 10 $\frac{1}{4}$ x 7 $\frac{7}{8}$ (sheet). [54669c] \$425.



36. Paul CADMUS
(American, 1904-1999)
YMCA Locker Room. Etching.
Signed. 1934. Edition of
50. Reference: Davenport
36, Johnson 80. 6 $\frac{3}{8}$ x 12 $\frac{1}{2}$
(plate), 7 $\frac{1}{8}$ x 13 $\frac{3}{4}$ (sheet).
[55008c] \$4,800. Also
available framed.



37. Giovanni Antonio Canal CANALETTO (Italian, 1697-1768) *Alle Porte del Dolo (At the Docks of Dolo)*. Etching. Signed in the plate, lower left. Collector's stamp verso. c. 1740. Reference: Bromberg 5 iii/iii. 11 $\frac{1}{8}$ x 17 (plate), 15 $\frac{3}{4}$ x 20 $\frac{3}{4}$ (sheet). [54525c] \$2,500.



38. Jacques CALLOT (French, 1592-1635) *Les Petites Misères de la Guerre (Complete Set)*. Set of 7 etchings. 1633. Published by Israël Henriet, Paris. Frontispiece by Abraham Bosse. Reference: Lieurre 1333 ii-1338 ii. Provenance: Dr. W. Schumaule. c. 2 $\frac{1}{4}$ x 4 $\frac{1}{2}$ (each image). Plate sizes vary. [54522c] \$2,800.



39. Alexander CALDER (American, 1898-1976) *Sun, Snake and Fish*. Lithograph. Signed. c. 1970. Edition 47/125. Good condition. 26 $\frac{1}{2}$ x 38 $\frac{1}{2}$ (image/sheet). [54716c] \$3,200.



40. Asa CHEFFETZ (American, 1896-1965) *Winter Weather*. Wood engraving. Signed. 1951. Published by American Associated Artists. Faint toning verso. 5 x 8 $\frac{1}{8}$ (block), 10 $\frac{1}{4}$ x 12 $\frac{3}{8}$ (sheet). [54635c] \$375.



42. Marc CHAGALL (Russian / French, 1887-1985) *Frontispiece for Le Plafond de l'Opéra de Paris*. For *Poème de Louis Aragon* by Jacques Lassaigue. Color lithograph. 1965. Published by André Sauret. Reference: Mourlot 434. 12 $\frac{7}{8}$ x 9 $\frac{1}{2}$ (image/sheet). [54728c] \$385.



44. John Stuart CURRY (American, 1897-1946) *Valley of the Wisconsin*. Lithograph. Signed. Initialed and dated in the stone. 1945. Edition of 230. Published by Associated American Artists. 11 $\frac{1}{8}$ x 15 $\frac{1}{4}$ (image), 12 $\frac{1}{4}$ x 15 $\frac{3}{4}$ (showing). [55010c] \$1,250. Also available framed.



41. Marc CHAGALL (Russian / French, 1887-1985) *King David*. Color lithograph on Japan paper. Signed. 1974. Edition 32/40. Reference: Mourlot 721. Good condition. 5 $\frac{3}{4}$ x 4 $\frac{1}{8}$ (image), 11 $\frac{1}{2}$ x 8 $\frac{1}{4}$ (sheet). [54717c] \$1,200.



43. Federico CASTELLÓN (Spanish / American, 1914-1971) *Taos Tryst*. Etching and aquatint. Signed. 1946. Published by Associated American Artists. Awarded the 1st Purchase Prize by the Library of Congress, 1949. Toned verso. 7 $\frac{3}{4}$ x 11 $\frac{1}{4}$ (plate), 11 x 15 (sheet). [54658c] \$450.



45. Howard Norton COOK (American, 1901-1980) *Taos Pueblo, Morning Smokes*. Wood engraving. Signed. 1927. Reference: Duffy 50. 8 $\frac{1}{8}$ x 8 (block), 11 $\frac{1}{8}$ x 9 (sheet). [54496c] \$800.



46. Robert CONNELL (American, b. 1947) *Blue Bridge*. Sumi ink and gouache on paper. Signed. 2013. 30 x 22 (image/sheet). [46052] \$900.



47. Howard Norton COOK (American, 1901-1980) *New York, Downtown II*. Graphite, chalk and pencil on paper. Signed. c. 1940. 35½ x 23 (showing). [55009c] \$6,200. Also available framed.



48. Jean Baptiste-Camille COROT (French, 1796-1875) *Souvenir de Toscane*. From *Gazette des Beaux-Arts*. Etching. c. 1865. Printed by A. Salmon, Paris. Reference: Delteil i/iv. 5½ x 7½ (plate), 7¼ x 10⅝ (sheet). [54520c] \$950.



49. Roy DE FOREST (American, 1930-2007) *Moe Travels*. Lithograph with hand-coloring. Signed in pencil. 1993. Bon à Tirer. 32 x 38 (image/sheet). [25789c] \$2,000.



50. John Stockton DE MARTELLY (American, 1903-1979) *Blue Valley Fox Hunt*. Lithograph. Signed. 1936. Edition of 250. Published by Associated American Artists. Spots in lower right margin. 12% x 16% (image), 15% x 18% (sheet). [54425c] \$950.



52. Albrecht DÜRER (German, 1471-1528) *The Mass of Saint Gregory*. Woodcut. Date and monogram at lower left corner. Chalice watermark. Date of Impression 1560. Date of Block 1511. Reference: Hollstein 1833, Bartsch 123, Meder 226, Strauss 160. Provenance: Collection of Drugulier. Trimmed to block edge. Hinge residue verso. A few small spots verso. 11% x 8 (block/sheet). [54703c] \$1,800.



51. Oleg DENISENKO (Ukrainian, b. 1959) *Autumn*. Etching. Signed. 2010. Edition 25/75. 5 x 5 (image), 9% x 6% (sheet). [330226] \$150.



53. Albrecht DÜRER (German, 1471-1528) *The Elevation of Saint Mary Magdalene*. Woodcut on wove paper. Monogram. c. 1504-1505. Reference: Bartsch 121, Meder 237, Strauss 89. Thread margins. 8% x 5% (block/sheet). [54435c] \$2,200.



54. Otto DIX (German, 1891-1969) *Nelly II*. Etching. Date of Impression 1968-1970. Date of Plate 1924. From the deluxe edition of 100. Printed by Otto Felsing, Berlin. Published by Karl Nierendorf, Berlin. Reference: Karsch 122. Good condition. 7% x 5% (plate), 10% x 8% (sheet). [54719c] \$450.



55. Werner DREWES (German / American, 1899-1985) *Open Construction*. Color woodcut. Signed. 1977. Edition 11/XX. Reference: Rose 365. Printer's fingerprint smudges at lower left margin. Two small ink spots at lower center margin. 16¼ x 11 (image), 24 x 19½ (sheet). [54823c] \$1,350.



58. Tallmadge DOYLE (American, b. 1956) *Shifting Migration V*. Etching and aquatint. Signed. 2016. EV. Edition of 12. 24 x 18 (image), 30 x 22 (plate). [334098] \$815.



56. Oleksiy FEDORENKO (Ukrainian, b. 1961) *Pierrot and Muse*. Etching. Signed. 2007. Edition of 50. 5½ x 3½ (plate), 10 x 5½ (sheet). [54073c] \$165.



57. Andy ENGLISH (British, b. 1956) *Heron*. Wood engraving. Signed. Edition of 100. 8 x 2 (image), 11½ x 6¾ (sheet). [347079] \$95.



59. Mary FARRELL (American, b. 1950) *Rushes*. Drypoint and lithograph. Signed. Edition of 13. 3 x 3 (image), 10 x 7¾ (sheet). [349694] \$150.



60. Sheldon FINK (American, 1925-2002) *Country Boy*. Lithograph. Signed. 1966. Edition 157/250. 10¾ x 8¾ (image), 14¾ x 11 (sheet). [54409c] \$250.



62. Ernest FIENE (American, 1894-1965) *St. Michael's in Brooklyn*. Lithograph. Signed. 1947. 9½ x 12½ (image), 12 x 15½ (sheet). [54487c] \$250.



63. Kevin FLETCHER (American, b. 1956) *Disused Dory Slip and Repairs Shed at Dusk*. Monotype. Signed. 2021. Edition 1/1. 12 x 9 (image), 15 x 11¼ (sheet). [347090] \$500.



61. Sergio GONZÁLEZ-TORNERO (Chilean / American, b. 1927) *The Origin of Species*. Color etching. Signed. 1972. Edition 49/150. Very faint toning. Slight rippling along lower margin edge. 24 x 19 (plate), 29¾ x 22 (sheet). [54514c] \$475.



64. Hendrik GOLTZIUS (Dutch, 1558-1617) *The Entombment*. From *The Passion of Christ*. Engraving. Monogram and date in the plate. Inscription verso. 1596. Reference: Bartsch 37. Trimmed to platemark. Hinge residue and kraft tape verso. Good even impression. A few pin holes visible when held up to light. 7¾ x 5½ (plate/sheet). [54530c] \$785.



65. Francisco GOYA (Spanish, 1746-1828) *Donde vá mama?* (*Where Is Mother Going?*). From *Los Caprichos*, Plate 65. Etching and aquatint. Signed in the plate, MA & BA green collection stamps verso. Date of Plate 1799. Reference: Delteil 102 iv, Harris 100. Very slight toning. $8\frac{1}{4} \times 6\frac{1}{2}$ (plate), $12\frac{7}{8} \times 9\frac{3}{4}$ (sheet). [54489c] \$650.



66. Francisco GOYA (Spanish, 1746-1828) *Unos á otros* (*What One Does to Another*). From *Los Caprichos*, Plate 77. Etching and aquatint on medium wove paper. 19th century impression. Date of Plate 1797-1798. Plate beveled. Reference: Delteil 114, Harris 112. Minor hinge residue verso. $8\frac{3}{8} \times 6$ (plate), $12\frac{1}{4} \times 9\frac{1}{8}$ (sheet). [54840c] \$600.



67. Francisco GOYA (Spanish, 1746-1828) *Qual la descañonan!* (*How They Pluck Her!*). From *Los Caprichos*, Plate 21. Etching and aquatint on medium wove paper. 19th century impression (1868). Date of Plate 1799. Plate beveled. Reference: Delteil 58, Harris 56. $8\frac{3}{8} \times 5\frac{3}{4}$ (plate), $12\frac{1}{4} \times 9$ (sheet). [54841c] \$625.



68. Francisco GOYA (Spanish, 1746-1828) *Chiton* (*Hush*). From *Los Caprichos*, Plate 28. Etching and aquatint. 1799. First edition. Reference: Delteil 65, Harris 63. $8\frac{1}{2} \times 6$ (plate). [54896c] \$2,500. Also available framed.

69. Jean GUMPPER (American, b. 1955) *Calligraphic Grass*. Woodcut and pochoir. Signed verso. 2016. Edition of 15. 20×30 (image/sheet). [343391] \$900.





70. Marion GREENWOOD (American, 1909-1970) *Voodoo Ritual*. Lithograph. Signed. 1950. Edition of 250. Published by Associated American Artists. 13 $\frac{3}{8}$ x 9 $\frac{3}{8}$ (image), 16 x 12 (sheet). [54656c] \$325.



72. Anthony GROSS (English, 1905-1984) *Spur (Summit)*. Engraving. Signed. 1957. Edition 18/200. 13 $\frac{3}{4}$ x 17 $\frac{1}{4}$ (plate), 18 x 21 $\frac{3}{8}$ (sheet). [54440c] \$300.



74. Yozo HAMAGUCHI (Japanese, 1909-2000) *Epi de mais et Citron (Ears of Corn and Lemon)*. Mezzotint. Signed in pencil. Libreria Prandi Reggio Emilia blindstamp. AP. Regular edition of 50. 9 $\frac{1}{2}$ x 21 $\frac{1}{4}$ (plate), 18 $\frac{1}{4}$ x 26 (sheet). [26263] \$3,600.



71. Phil GREENWOOD (Welsh, b. 1943) *Winter Copse*. Etching and aquatint. Signed. Edition of 150. 9 $\frac{1}{4}$ x 10 $\frac{1}{2}$ (plate), 15 x 15 (sheet). [347702] \$225.



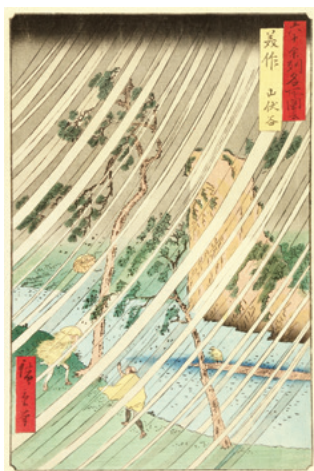
73. Childe HASSAM (American, 1859-1935) *Fifth Avenue, Noon*. Etching. Signed in pencil with monogram. 1916. Edition of approx. 20. Reference: Clayton-Cortisoz 77 ii/iii. Provenance: The Milch Galleries, New York. Usual stretch/drying holes at all margin edges. 9 $\frac{7}{8}$ x 7 $\frac{1}{4}$ (plate), 12 $\frac{1}{8}$ x 10 (sheet). [51893c] \$6,800.



75. Asumi HAYASHI (Japanese, b. 1985) *What is Protected*. Mezzotint with chine-collé. Signed. Edition of 20. 7 x 5¼ (plate), 15½ x 11¼ (sheet). [347763] \$225.



76. Utagawa HIROSHIGE (Japanese, 1797-1858) *Shimotsuke Province, Mount Nikko Urami Waterfall*. From *Famous Views of the Sixty-odd Provinces*, #27. Color woodblock. Date of Blocks 1853/1858. Very good early color. Margins skillfully restored. Oban (c. 15 x 10). [54857c] \$2,200.



77. Utagawa HIROSHIGE (Japanese, 1797-1858) *Mimasaka Province. Yamabushi Valley*. From *Famous Views of the Sixty-odd Provinces*, #46. Color woodblock. Date of Blocks 1853. Very good early color. Margins skillfully restored. Oban (c. 15 x 10). [54865c] \$2,400.



78. Utagawa HIROSHIGE (Japanese, 1797-1858) *Hoki Province. Ono, Distant View of Mount Daisen*. From *Famous Views of the Sixty-odd Provinces*, #41. Color woodblock. Date of Blocks 1853. Very good early color. Margins skillfully restored. Oban (c. 15 x 10). [54864c] \$2,400.



79. Maqbool Fida HUSAIN (Indian, 1915-2011) *Pilgrimage on a Bullock Cart*. Color lithograph. Signed. 1957. "Made in Switzerland, Ria Ulrich" stamp verso. 13¾ x 18½ (image), 17½ x 22 (sheet). [54688c] \$1,800.



80. Seiichi HIROSHIMA
(Japanese, b. 1950) *Owl - Hum*.
Mezzotint. Signed. 2013.
Edition of 25. 2 $\frac{7}{8}$ x 2 $\frac{7}{8}$ (plate),
7 $\frac{1}{2}$ x 7 $\frac{1}{2}$ (sheet). [348623]
\$200.



81. Virginia HUNGATE-HAWK
(American, b. 1985) *Yellow Gathering*
Series XXI. Etching with cut paper (chine-
collé). Signed. 2022. Edition 1/1. 10 x 8
(image/sheet). [348273] \$325.



82. Helmi Dagmar JUVONEN
(American, 1903-1985) *Girl*
with Brown Hair and Red Bow.
Color ink drawing. Signed note
inside folded sheet. 1976.
7 x 4 $\frac{1}{4}$ (sheet). [53865c] \$275.



83. Irwin David HOFFMAN
(American, 1901-1989) *Miner at Rest*.
Drypoint. Signed and dedicated.
Date of Plate 1937. Edition of 100.
Very faintly toned. 11 x 8 (plate),
15 $\frac{3}{4}$ x 12 $\frac{3}{8}$ (sheet). [54418c] \$550.



84. Friedensreich HUNDERTWASSER
(Austrian, 1928-2000) *One of Five*
Seamen. Silkscreen in 18 colors with
metal imprints in 2 colors. Signed in
ink at lower left. 1975. Edition 4/250.
Printed by Studio Quattro, Venice-
Mestre. Published by Gruener Janura
AG, Glarus, Switzerland. Reference:
HWG 66, 748. 35 $\frac{1}{2}$ x 23 $\frac{3}{8}$ (image/
sheet). [48469c] \$3,000.



85. Morris Henry HOBBS
(American, 1892-1967) *Resting*.
Drypoint. Signed. c. 1930.
Edition of 75. Reference: Isbell
65. 5 $\frac{7}{8}$ x 4 $\frac{1}{4}$ (image), 8 $\frac{1}{2}$ x 6 $\frac{1}{2}$
(sheet). [49689c] \$500.



86. Paul JACOLET (French, 1902-1960) *Les Perles - Mandchoukuo (The Pearls)*. Color woodblock. Dec. 1950. Signed. Peach seal. Watermark. Stamped verso. Carved by Maeda. Printed by Honda, Ogawa, Onodera, Uchikewa. Reference: Miles 113. Three faint spots in upper left margin, away from the image. 15½ x 11¾ (block), 18½ x 14¼ (sheet). [52458c] \$1,800.



89. Harold E. KEELER (American, 1905-1968) *By the Lake*. Wood engraving. Signed. 1945. Edition of 25. 2¾ x 2¼ (block), 3 x 2½ (sheet). [30401c] \$165.



90. Jonelle JOHNSON (American, b. 1945) *Blue Arm Girl*. Etching. Signed. 2009. Edition of 25. 10 x 9 (image), 15 x 14½ (sheet). [342206] \$225.



87. Koji IKUTA (Japanese, b. 1953) *Shadow*. Mezzotint. Signed. 2019. Edition of 95. 5¼ x 9 (image), 9¼ x 13 (sheet). [347486] \$325.



88. Peter JOGO (American, b. 1948) *Trio*. Color mezzotint. Signed. 2020. Edition of 40. Second state. 4½ x 6¾ (plate), 8 x 10 (sheet). [347917] \$360.



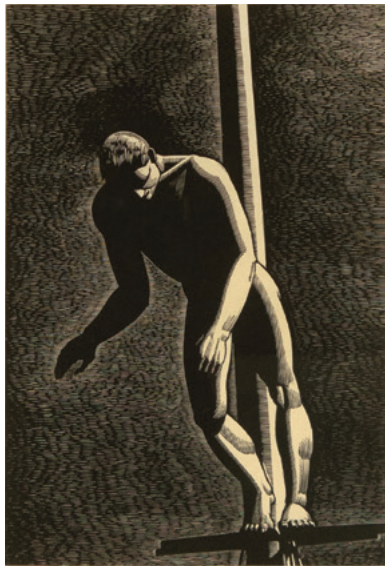
91. Hide KAWANISHI (Japanese, 1894-1965) *Plum Blossom in Japanese Garden*. Color woodblock. Signed and sealed. Stamps at lower right. 11¾ x 14 (block/sheet). [54466c] \$275.



92. Michael KARKEN (American, b. 1961) *Tree Near Second Beach*. Watercolor monotype. Signed. 2020. Edition 1/1. 15¾ x 23¾ (image), 22¼ x 30 (sheet). [347533] \$1,900.



94. Rockwell KENT (American, 1882-1971) *And Now Where?* Lithograph. Publisher's original label. 1936. Published by American Artists Group, New York. Reference: Burne-Jones 110. Very faintly toned in margin. 13 x 9¾ (image), 14 x 10¼ (showing). [55007c] \$950. Also available framed.



93. Rockwell KENT (American, 1882-1971) *Diver*. Wood engraving. Signed. 1931. Edition of 150. Reference: Burne-Jones 88. Provenance: George Krevsky Gallery, San Francisco. 7¾ x 5¼ (block), 8½ x 5½ (showing). [55011c] \$1,800. Also available framed.



95. Rockwell KENT (American, 1882-1971) *Drifter*. Wood engraving. Signed. 1933. Edition of 250. Reference: Burne-Jones 92. 5¾ x 6¾ (image), 11½ x 12½ (sheet). [50568c] \$2,820.



96. Karen KUNC (American, b. 1952) *Presenting*. Color woodcut. Signed. 2021. Edition of 7. 13¾ x 29 (image/sheet). [347118] \$1,650.



97. Eunice KIM (Korean / American, b. 1971) *Seedling (9) #1*. Reclaimed wood monoprint, hand-cut paper, blind embossment and collage. Signed. 2023. Edition 1/1. 9 x 9 (image/sheet). [349611] \$300.



98. Seoul KIM (Korean, b. 1983) *A Small Box II*. Color etching with chine-collé and hand-coloring. Signed. 2020. Edition of 30. 7¾ x 7¾ (image), 13 x 12¾ (sheet). [347372] \$150.



99. Keisei KOBAYASHI (Japanese, b. 1944) *Eden 08 E*. From *Sunrises Again*. Wood engraving with chine-collé. Signed. 2008. Edition of 35. 27¾ x 12½ (image), 34 x 18½ (sheet). [334050] \$1,200.



100. Tsuchiya KOITSU (Japanese, 1870-1949) *Snow Scene at Night*. Color woodblock. Signed and sealed. 14¼ x 9½ (blocks), 15½ x 10½ (sheet). [54413c] \$375.



101. Paul LANDACRE (American, 1893-1963) *Hill*. Wood engraving on imitation Japan paper. Signed. 1936. Edition 47/60. 5 x 8¾ (block), 7¼ x 10½ (sheet). [42606] \$4,600.



102. Paul LANDACRE (American, 1893-1963) *Campers*. From *The Colophon* No. 4, Vol. 1. Wood engraving. 1940. Published by Pynson Printers, New York. 5¾ x 8¼ (block), 8¾ x 10¾ (sheet). [54415c] \$250.



104. Käthe KOLLWITZ (German, 1867-1945) *Mutter mit Kind auf dem Arm (Mother with Child in Her Arms)*. Etching. Date of Plate 1916. Date of Impression Pre-1977. Restrike. Published by Alexander von der Becke. Reference: Klipstein 110. Excellent condition. 7½ x 5 (plate), 14 x 10¾ (sheet). [54269c] \$850.



106. Käthe KOLLWITZ (German, 1867-1945) *Beratung (Conspiracy)*. From *The Weaver's Revolt*, Plate 3. Line etching, drypoint and sandpaper. Von der Becke blindstamp lower right corner of plate. Date of Plate 1893-1897. Reference: Klipstein 25. Faint toning in margins. 11½ x 7 (plate), 17½ x 13¾ (sheet). [53743] \$850.



103. Käthe KOLLWITZ (German, 1867-1945) *Hamburger Kneipe (Hamburg Pub)*. Soft-ground etching. Signed. Date of Plate 1901. Date of Impression 1910. Reference: Klipstein 58, Knesebeck 55 ii b. Toned verso. 7½ x 9½ (plate), 12½ x 15½ (sheet). [54516c] \$1,800.



105. Marie LAURENCIN (French, 1883-1956) *La Romance*. Etching. Signed. Watermark. 1912. Edition 25/25. Reference: Marchesseau 22. Pin holes at four corners of margins. General soiling. Pencil notations rubbed. 9¾ x 7¾ (plate), 16¾ x 12½ (sheet). [53629Ac] \$550.



107. Marie LAURENCIN (French, 1883-1956) *La Belle Écossaise (The Beautiful Scottish Girl)*. Etching. Signed. 1913. Edition 16/25. Reference: Marchesseau 28. Pin holes in margin corners. Some soiling, small tear at lower center margin edge. 9¾ x 7¾ (plate), 14½ x 10¾ (sheet). [53628c] \$1,600.



108. Martin James LANGFORD

(British, b. 1970) *The Missing Piece*. Color etching. Signed. Edition of 100. 6¾ x 13 (image), 12 x 16¾ (sheet). [334861] \$230.



109. Armin LANDECK (American, 1905-1984)

Engraver's Tools. Engraving. Signed. 1974. Edition of 100. Reference: Kraeft 126. Provenance: Zorin collection stamp, verso. Faint toning and hinge residue verso. 15½ x 17¾ (plate), 19¾ x 21 (sheet). [52410c] \$650.



110. Michèle LANDSAAT (American, b. 1968)

Moon-Shaped Bread. Etching with chine-collé and hand-coloring. Signed. 2021. Edition of 10. 5 x 6 (image), 9½ x 8 (sheet). [347619] \$215.



111. Chul Soo LEE (Korean, b. 1954) *Little Things*. Woodcut. Artist's stamp. 2003. 14 x 12 (image), 21½ x 25¼ (sheet). [27345] \$550.



112. Jean-Luc LE BALP (French, b. 1961) *Baranco 30*. Color etching. Signed. Edition of 30. 23¾ x 23 (image), 31½ x 29½ (sheet). [346631] \$1,800.



113. Carrie LINGSCHIEIT (American, b. 1984) *Jackalope Sweethearts*. Intaglio. Signed. Edition of 50. $9\frac{1}{2} \times 7$ (image), 14×11 (sheet). [348147] \$300.



114. Emmy LINGSCHIEIT (American, b. 1981) *Opossum Deconstructed*. Lithograph with hand-coloring. Signed. 2011. AP. $11 \times 13\frac{3}{4}$ (image), $22\frac{1}{2} \times 28\frac{1}{2}$ (sheet). [335931] \$350.



116. Robert Cranston LEE (American, 1900-1989) *Pike Place Market*. Wood engraving. Signed. 1945. 4×5 (block), $5 \times 6\frac{1}{4}$ (sheet). [54405c] \$375.



115. Robert Cranston LEE (American, 1900-1989) *Hill Country*. Wood engraving. Signed. 1945. 3×4 (block), $5 \times 6\frac{1}{4}$ (sheet). [54406c] \$350.



117. Helen LOGGIE (American, 1895-1976) *The Vigilant*. Etching. Signed and dated. 1948. 9×12 (plate), $11\frac{1}{8} \times 16\frac{3}{8}$ (sheet). [54292c] \$1,600.



118. Helen LOGGIE (American, 1895-1976) *Island Firs*. Etching on Arches. Signed. 1934. Very faint toning in margins. 11×8 (plate), $14 \times 9\frac{3}{4}$ (sheet). [54203c] \$1,250.



119. Louis LOZOWICK (Ukrainian / American, 1892-1973) *Dead End*. Lithograph. Signed. 1941. Edition of 20. Reference: Flint 189. 7½ x 14¾ (image), 8¼ x 15 (showing). [55012c] \$3,800. Also available framed.



121. Alexandre LUNOIS (French, 1863-1916) *Femme espagnole remettant son soulier* (Spanish Woman Putting on Her Shoe). For *L'Album des peintres-graveurs*, Ambroise Vollard. Color lithograph. Signed. 1896. Edition of 100. Printed by Auguste Clot. Provenance: Zorin collection stamp, verso. Some toning, especially verso. Some minor skinning from previous hinges verso. 19¾ x 15¾ (image), 22½ x 17 (sheet). [54209c] \$500.



123. Reginald MARSH (American, 1898-1954) *Loco-Erie Watering*. Etching. Signed. 1929. Reference: Sasowsky 85 iv. 6¾ x 9¾ (plate), 10 x 13 (sheet). [51892] \$2,000.



120. Kelvin MANN (Irish, b. 1972) *Pecking Order*. Etching. Signed. Edition of 50. 15 x 15 (image), 23½ x 20½ (sheet). \$650.



122. Samuel L. MARGOLIES (American, 1897-1974) *Builders of Babylon*. Etching and aquatint. Signed. 1937. Published by Associated American Artists. Toned verso. 14¼ x 11 (plate), 17 x 13¼ (sheet). [54621c] \$5,000.

124. Henri MATISSE (French, 1869-1954) *Visage de fille*. From *Les Miroirs profonds / Pierre à feu*. Lithograph. 1947. Edition of 950. Published by Atelier Mourlot. Hinge residue verso. 8½ x 8½ (image), 9¾ x 8¼ (sheet). [54844c] \$1,200.





125. Naoko MATSUBARA (Japanese / Canadian, b. 1937) *Dragon*. From *The Tale of the Shining Princess*. Woodcut. Signed and dedicated to 'A.D. Breeskin'. 1966. Published by Kodansha International Publishers, Tokyo. $9\frac{1}{2} \times 23\frac{3}{8}$ (block). [54904c] \$325. Also available framed.



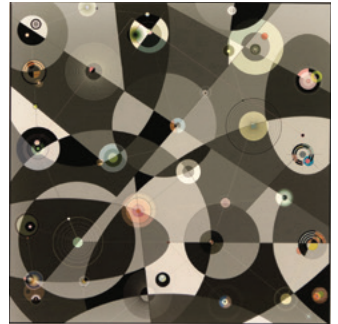
126. Stephen McMILLAN (American, b. 1949) *Oregon Coast*. Aquatint. Signed. 1991. Edition of 200. $5 \times 8\frac{7}{8}$ (image), 11×15 (sheet). [344760] \$125.



127. F.S. MEDIARY (American, fl. 20th century) *Birch Trees*. Watercolor. Signed. $9\frac{1}{2} \times 12$ (image/sheet). [11095c] \$250.



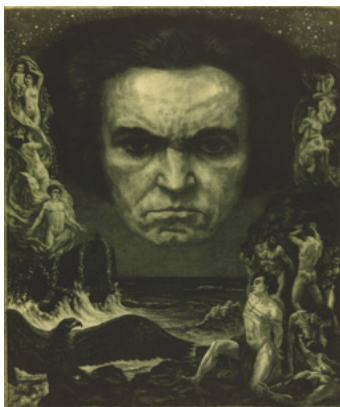
128. Frederick MERSHIMER (American, b. 1958) *Above the Rush*. Mezzotint and aquatint. Signed. 2003. Edition of 120. $11\frac{1}{2} \times 17\frac{1}{2}$ (image), $18\frac{1}{4} \times 23\frac{1}{2}$ (sheet). [334830] \$1,000.



129. Mark MEYER (American, b. 1947) *Points and Lines: Tokyo Tante (Tokyo Detective)*. Pigment print on paper. Signed. 2008. Edition of 10. 8×8 (image), 12×12 (sheet). [328638] \$250.



130. John C. MENIHAN (American, 1908-1992) *Dingle*. Lithograph. Signed in pencil. c. 1981. Reference: Menihan L 156-P. 13½ x 17¾ (image), 15½ x 21 (sheet). [45372c] \$500.



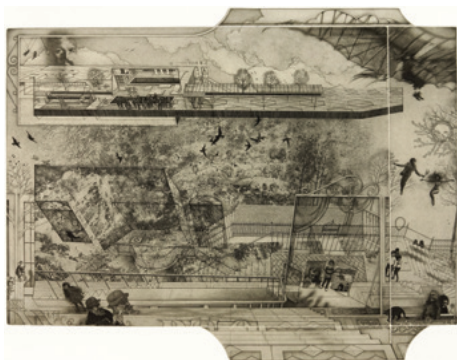
131. Ferdinand MICHL (Czech, 1877-1951) *Beethoven*. Mezzotint. Signed. Repaired tear at upper right margin, from sheet edge to just within the image. 16¾ x 14¼ (plate), 22¼ x 19½ (sheet). [54696c] \$625.



132. Joan MIRÓ (Spanish / Catalan, 1893-1983) *Les Essències de la Terra (Essences of the Earth)*. Color lithograph with hand-drawn calligraphic element. Signed. 1968. Printed by Mourlot, Paris. Provenance: Franklin Bowles Galleries. 19½ x 14 (image/sheet). [55013c] \$5,000. Also available framed.



133. Maxime MAUFRA (French, 1861-1918) *La Route de Gaud (The Road from Gaud)*. From *L'Estampe originale, Album III*. Color lithograph. Signed. Blindstamp lower left margin edge. 1893. Published by André Marty. 7¼ x 11½ (image), 15¾ x 22 (sheet). [48067c] \$2,800.



134. Peter MILTON (American, b. 1930) *A Sky Blue Life*. Intaglio. Signed. 1976. AP edition of XV. 26 x 33 (image), 28½ x 39 (sheet). [37938] \$4,000.



135. Martin MITCHELL (British, b. 1965) *Winter Beech*. Mezzotint. Signed. Edition of 30. 6¼ x 4¾ (image), 13½ x 10½ (sheet). [344606] \$210.



136. Gordon MORTENSEN (American, b. 1938) *Early June*. Reduction woodcut. Signed. 1985. AP edition of 15. 15 x 20 (image), 17½ x 22½ (sheet). [348605] \$700.



138. Shiko MUNAKATA (Japanese, 1903-1975) *The Sand Nest (Sunasu no saku)*. From *The Story of the Cormorant (Uto hangakan)*. Woodcut. Signed. Red muna seal. Date of Block 1938. Date of Impression 1958. Reference: Kodansha vol. 1, no. 53. 8¾ x 11½ (block), 13½ x 16 (sheet). [53231c] \$4,000.



140. Jackson Lee NESBITT (American, 1913-2008) *The Mathew W. Johnston Family*. Lithograph. Signed. 1990. Edition 87/250. Reference: Retif & Salzer 39. Provenance: Conrad Graeber Fine Art, Baltimore. 9½ x 12¾ (image), 11 x 13½ (showing). [55019c] \$485. Also available framed.



141. Jackson Lee NESBITT (American, 1913-2008) *Plate Mill, Sheffield Steel Corporation*. Etching. Signed. 1938. Edition 36/60. Reference: Retif & Salzer 11. 9 x 11¾ (plate), 10 x 12½ (showing). [55014c] \$1,200. Also available framed.



139. Jackson Lee NESBITT (American, 1913-2008) *Ozark Bridge*. Etching. Signed. 1941. 11¾ x 9¾ (plate), 14 x 11¾ (sheet). [54402c] \$425.



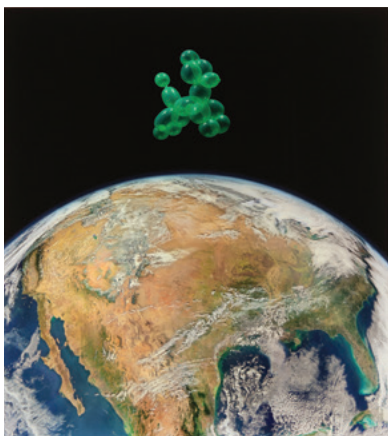
142. Thomas NASON (American, 1889-1971) *Haystacks*. Wood engraving. Signed. 1949. Published by Associated American Artists. 6¾ x 8¾ (block), 10½ x 12¾ (sheet). [54650c] \$325.

137. Shiko MUNAKATA (Japanese, 1903-1975) *Rahula, Master of the Esoteric*. From *Ten Great Disciples of Buddha*. Woodcut. Signed. Red muna seal. Date of Block 1937. Date of Impression 1958. Toning at margin edge. 36¼ x 11½ (block), 40¼ x 16 (sheet). [53246c] \$28,000.

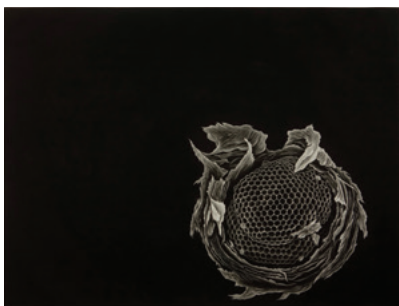




143. Sayuri NISHIMURA (Japanese, b. 1988) *The Existence of Dragon and Haught*. Etching and aquatint. Signed. 2008. Edition of 20. 15¼ x 23⅝ (image), 21⅝ x 30¼ (sheet). [344677] \$850.



145. Barbara NOAH (American, b. 1949) *Howl*. Archival pigment print. Signed. 2019. Edition of 25. 18 x 16 (image), 19 x 17 (showing). [342901] \$900. Also available framed at an additional cost.



147. Julie NISKANEN (American, b. 1983) *Sanctuary*. Mezzotint. Signed. 2007-2008. Edition of 16. 23½ x 17½ (image), 22¼ x 30¾ (sheet). [43686] \$945.



144. Kumi OBATA (Japanese, b. 1966) *Yearning for a Journey*. Etching. Signed. Edition of 20. 8⅞ x 5¾ (plate), 13⅝ x 11¼ (sheet). [346786] \$225.



146. Dale NICHOLS (American, 1904-1995) *Company for Supper*. Lithograph. Signed. 1948. Edition of 250. Published by Associated American Artists. Provenance: American Legacy Gallery, Kansas City. Very faint toning in margins. 9½ x 13¾ (image), 10⅝ x 14 ¼ (showing). [55015c] \$1,250. Also available framed.



148. Samuel PALMER (English, 1805-1881) *The Herdsman's Cottage or Sunset*. Etching on Arches. Initialed in the plate. Date of Plate 1850. Date of Impression 1880. Reference: Hardie 3. 4⅞ x 3⅞ (plate), 12¼ x 8¾ (sheet). [54691c] \$750.



149. Irving NORMAN (American, 1910-1989) *From Work*. Lithograph on antique white wove Stonehenge. Signed. 1979. Edition 28/90. Published by Editions Press, San Francisco. 19 x 25 (image), 22 $\frac{1}{4}$ x 27 $\frac{1}{2}$ (sheet). [1191] \$1,500.



150. John R. NOBRIGAN (American) *Young Lady Ballet Debut*. Ink wash drawing. Signed lower right. 1957. Backing residue verso. 19 $\frac{1}{2}$ x 25 $\frac{1}{2}$ (image/sheet). [48296] \$425.



151. Wendy ORVILLE (American, b. 1962) *Galina*. Monotype. Signed. 2022. Edition 1/1. 14 $\frac{1}{4}$ x 14 (image), 25 $\frac{3}{8}$ x 22 $\frac{1}{4}$ (sheet). [348206] \$2,000. Also available framed at an additional cost.



152. Eva PIETZCKER (German, b. 1966) *North Cascades*. Etching with aquatint. Signed. 2012. Edition of 20. 8 $\frac{3}{4}$ x 9 (image/sheet). [343220] \$400.



153. Max Hermann PECHSTEIN (German, 1881-1955) *Weiblicher Kopf (Female Head)*. Woodblock. Signed. 1918. Reference: Krüger H 214. 4 $\frac{1}{2}$ x 3 $\frac{1}{8}$ (image), 8 x 6 $\frac{5}{8}$ (sheet). [42999] \$3,200.



154. Giovanni Battista PIRANESI (Italian, 1720-1778)
Sepolcro delle tre fratelli Curiatii in Albano (Tomb of the Three Curatii Brothers in Albano). From *Le Antichità Romane (The Antiquities of Rome)*, Vol. III, Plate X. Etching. 1756. Reference: Wilton-Ely 430, Focillon 295. Usual centerfold, small repaired tear upper left margin. $1\frac{1}{2} \times 2\frac{3}{4}$ (plate), $20\frac{1}{2} \times 28\frac{1}{4}$ (sheet). [51725c] \$1,800.



156. Robert PATIERNO (American, b. 1949) *Hawk in the Neighborhood*. Woodcut. Signed. c. 2000. Edition of 15. 12×16 (image), $19 \times 21\frac{3}{4}$ (sheet). [335946] \$600.



158. Auguste RODIN (French, 1840-1917) *Le Printemps (Spring)*. Drypoint. 1883. Reference: Delteil 4. Tape residue at upper margin edge. $5\frac{3}{4} \times 3\frac{7}{8}$ (plate), $11\frac{1}{2} \times 7\frac{7}{8}$ (sheet). [54667c] \$1,200.

155. Martha J. PFANSCHMIDT (American, b. 1954)
Just So. Collage. Signed. 2021. $11\frac{1}{4} \times 7\frac{1}{2}$ (sheet). [349238] \$150.



157. Gabor PETERDI (Hungarian / American, 1915-2001) *Yosemite*. Etching. Signed. 1962. Edition 108/200. Published by International Graphic Arts Society. $14\frac{3}{4} \times 11\frac{7}{8}$ (plate), $20\frac{1}{2} \times 14\frac{7}{8}$ (sheet). [54671c] \$300.



159. Doel REED (American, 1894-1985) *Picuris Pueblo, Winter*. Aquatint. Signed. 1954. Edition of 100. Provenance: Mission Gallery, Taos. Commissioned by the Print Club of Rochester. $9\frac{3}{4} \times 16$ (plate), $12\frac{7}{8} \times 18\frac{3}{4}$ (sheet). [55018c] \$1,800. Also available framed.



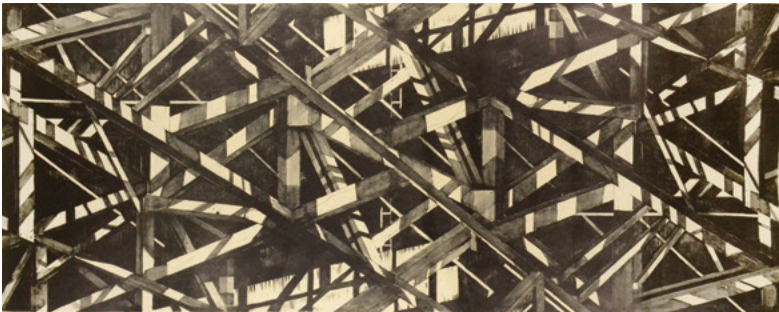
160. Pablo PICASSO (Spanish, 1881-1973) *Le Repos du Sculpteur devant un nu à la Draperie (Reclining Sculptor in Front of Draped Nude)*. From *La Suite Vollard*, Plate 51. Etching. Signed. Picasso watermark lower margin. 1933. Reference: Bloch 160, Geiser 313. Upper and side margins trimmed. 10³/₈ x 7¹/₂ (plate), 15³/₈ x 10 (sheet). [54721c] \$6,200.



161. Pablo PICASSO (Spanish, 1881-1973) *Femme au Fichu (Woman with Scarf)*. From *Vingt Poèmes de Góngora*, Plate 16. Etching and aquatint. 1948. Edition II/XXV. Reference: Bloch 491. 11¹/₂ x 7¹/₂ (image), 15 x 12 (framed). [54889c] \$1,800. Also available framed.



162. Artemio RODRÍGUEZ (Mexican, b. 1972) *Evil Forest*. Woodcut. Signed. 2011. Edition of 10. 8¹/₂ x 21¹/₄ (image), 15 x 25³/₄ (sheet). [349050] \$800.



163. Jenny ROBINSON (British / American, b. 1957) *Winters Light, Hunters Point*. Stone lithograph. Signed. 2018. Edition of 7. 28¹/₄ x 71¹/₄ (image), 32³/₄ x 77 (sheet). [348756] \$3,500.



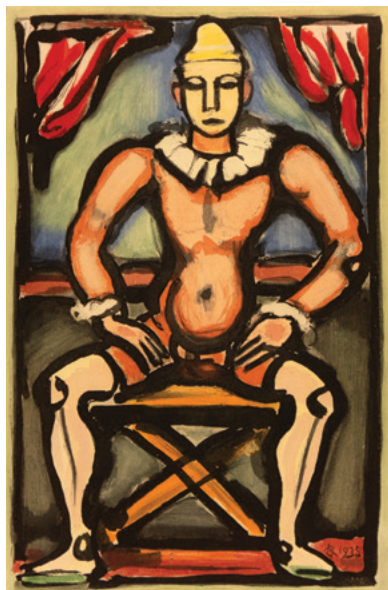
164. Diego RIVERA (Mexican, 1886-1957) *El mercado de flores* (*The Flower Market*). Lithograph on gray paper. Signed. PMF Ingres watermark. 1930. Edition 78/100. Hinge residue at upper margin edge. 10¾ x 15¼ (image), 18¾ x 24 (sheet). [54722c] \$4,800.



166. Judith ROTHCHILD (American / French, b. 1950) *Toi!* Mezzotint. Signed. 2021. Edition of 30. 7¾ x 11¾ (image), 12 x 15¾ (sheet). [349249] \$550.



168. Luigi ROSSINI (Italian, 1790-1857) *Veduta dell'Anfiteatro Flavio, detto il Colosseo* (*View of the Amphitheater of Flavio, called the Colosseum*). From *Vedute di Antichità Romane* (*Views of Ancient Rome*). Etching. 1821. 18½ x 25½ (plate), 19¾ x 29¾ (sheet). [46470c] \$850.



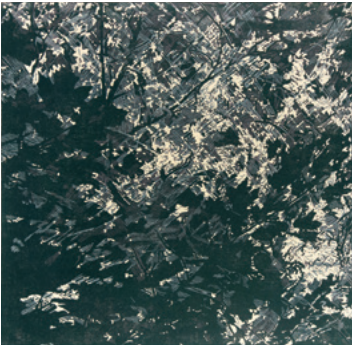
165. Georges ROUAULT (French, 1871-1958) *Enfant de la Balle* (*Child of the Circus*). From *Cirque de l'Etoile Filante* (*The Shooting Star Circus*). Color etching and aquatint. Initialed and dated in the plate. Date of Plate 1935. Date of Impression 1938. Edition of 280. Printed by Lacourière, Paris, Aux Deux Ours, Paris. Published by Volland, Paris. Reference: Chapon-Rouault 249 b, Wofsy 328. Faintly toned. Accompanied by the signed justification page for Portfolio No. 8 with an initialed inscription. 12 x 8 (plate), 17½ x 12¼ (sheet). [54720c] \$1,800.

167. Abigail RORER (American, b. 1949) *Rubus australis*. Multi-block relief engraving. Signed. Edition of 25. 7¼ x 3 (image), 11¼ x 6½ (sheet). [344587] \$145.





169. Ruth Starr ROSE (American, 1887-1965) *Golden Slippers*. Color lithograph. Signed. 1947. Edition of 250. Provenance: The 8th Presentation Print for the American Color Print Society. 10 x 12¾ (image), 11¾ x 14¼ (sheet). [54668c] \$600.



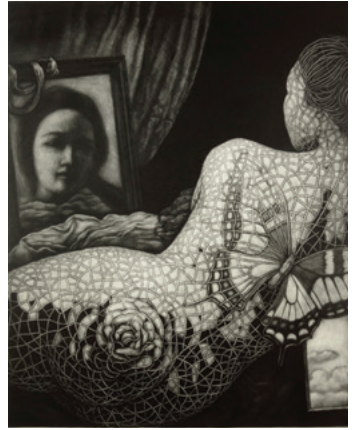
171. Zha SAI (Chinese, b. 1974) *Refreshing Shadow*. Reduction woodcut. Signed. 2017. Edition of 10. 19¼ x 19½ (image), 23¾ x 26¼ (sheet). [336440] \$715.



173. Tomiyuki SAKUTA (Japanese, b. 1960) *Chatterbox*. Mixed intaglio. Signed. 2004. Edition of 10. 23¾ x 8¼ (image), 27 x 16½ (sheet). [43579] \$600.



170. Ivan RUSACHEK (Russian, b. 1976) *Terra Marique*. Etching and engraving. Signed. 2006. AP edition of XX. 5 x 5 (image), 12½ x 12½ (sheet). [341472] \$195.



172. Atsuo SAKAZUME (Japanese, b. 1941) *Looking at "Venus Looking the Mirror" - Metamorphosed Data 1*. After the painting by Velázquez. Mezzotint. Signed. Edition of 35. 24¼ x 19½ (image), 29 x 23½ (sheet). [344470] \$1,000.



174. Anders SANDSTROM (American, b. 1961) *Mouser*. Wood engraving. Signed. Edition of 15. 2 x 2¾ (image), 6 x 6 (sheet). [337784] \$100.



175. David SALLE (American, b. 1952) *Portrait with Scissors and Nightclub*. Color woodcut. Signed. 1987. Edition 67/100. Published by Crown Point Press, San Francisco. 18 x 24 (blocks), 24¾ x 29½ (sheet). [54432c] \$1,500. Also available framed.



176. Jenny SCHMID (American, b. 1969) *Adrift*. Woodcut on blue Gampi. Signed. 2020. Edition of 20. Published by Paul Mallowney and the Watershed Center for Print Media. 39¾ x 15¾ (image), 44 x 20 (sheet). [348336] \$1,000.

177. Sven Birger SANDZEN (Swedish / American, 1871-1954) *The Colonnade*. Lithograph. Signed. 1924. Edition of 100. Provenance: American Legacy Gallery, Kansas City. 10¾ x 14½ (image), 12 x 15½ (showing). [55016c] \$650. Also available framed.



178. Jun'ichiro SEKINO (Japanese, 1914-1988) *Okazaki Castle*. From *Fifty-three Stations along the Tōkaidō*. Color woodblock. Signed and stamped. Artist's watermark. 1969. Hinge residue at margin edges. 12⅞ x 18 (blocks), 16¾ x 21¾ (sheet). [54426c] \$425.

179. Paul SCHAUB (American, b. 1923) *Rowing Alone*. Color woodblock. Signed. 1962. Edition of 210. Published by International Graphic Arts Society. 13½ x 12⅞ (blocks), 20½ x 18 (sheet). [54694c] \$150.



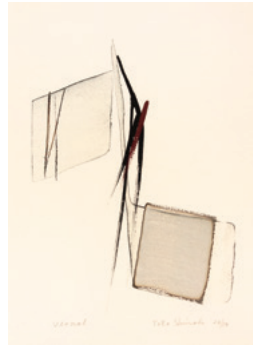
180. Ronald SEARLE (British, 1920-2011) *The Babysitter*. Lithograph with hand-coloring. Signed, dated, and titled in ink. 1976. Proof. Dedicated "for Ernest". Notations for commission proposal "Maquette Couteur, 19 September 1976". Two faint fold impressions through image top to bottom. 19½ x 25½ (image/sheet). [54725c] \$800.



181. Charles H. SHANNON (English, 1863-1937) *The Wayfarers*. Lithograph. Signed. Initialed at lower right corner of image. 1904. 15½ x 11½ (image), 16½ x 12½ (sheet). [54419c] \$225.



182. Ronald SEARLE (British, 1920-2011) *Memory Lane*. Color lithograph on Arches. Signed and dated. 1977. Publisher's blindstamp lower right corner. Edition 1/99. Published by Edition RS, Paris. Good condition. 19 x 24¾ (image), 19¾ x 25½ (sheet). [54727c] \$475.



183. Toko SHINODA (Japanese, 1913-2021) *Vernal*. Lithograph with brush strokes added. Signed. Edition 24/50. Printed by K. Kimura, blindstamp lower left margin. 11¼ x 8¾ (image), 15 x 11½ (sheet). [53683c] \$2,800.



184. David Alfaro SIQUEIROS (Mexican, 1896-1974) *Jesus*. From *Mexican Suite*, Plate III. Color lithograph on Arches. Signed. 1969. Edition 52/300. Printed by Atelier Mourlot, Paris. Published by Touchstone Publishing Ltd, New York. 21¼ x 15¾ (image), 25¾ x 19¾ (sheet). [51830c] \$600.



185. Renée SINTENIS (German, 1888-1965) *Der Fuchs (The Fox)*. Etching on laid paper. Signed. Windmill watermark. 1947. Printed by Otto Felsing, Berlin. 11¼ x 7½ (plate), 13¾ x 9¾ (sheet). [54664c] \$385.



186. Yngve Edward SODERBERG (American, 1896-1971) *Wharf*. Watercolor. Signed. Tape residue verso. 15½ x 22½ (image/sheet). [54427c] \$800.



187. Sarah SMELSER (American, b. 1971) *The Great Divide II*. Monotype. Signed. 2021. Edition 1/1. 20 x 16 (image), 26 x 22 (sheet). [347552] \$1,400.



188. Timothy SMITH (American, b. 1979) *Carnival*. Mezzotint. Signed. 2015. Edition of 30. 9 x 12 (image), 13½ x 16 (sheet). [330865] \$400.



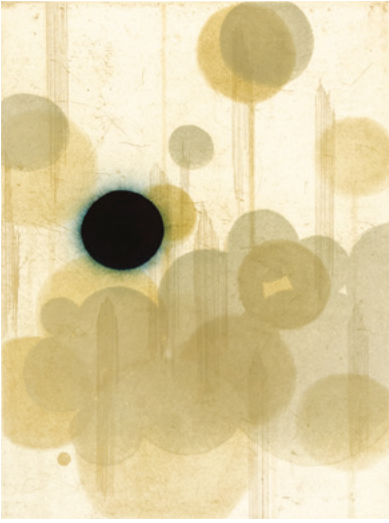
189. Azumi TAKEDA (Japanese, b. 1986) *The Story of the Perfectly Flawless Cleaning Husband Trio*. From *Troublesome Stories*. Etching and aquatint. Signed. 2010. Edition of 15. 6¼ x 6¼ (image), 11¼ x 11¼ (sheet). [347755] \$225.



190. Raphael SOYER (Russian / American, 1899-1987) *Sing a Song of Friendship*. Lithograph. Signed. c. 1965. Edition 277/300. Reference: Cole 109. Very faint toning on upper 1/4 of sheet. 14 x 12¾ (image), 19¾ x 17 (sheet). [54226c] \$450.



191. Raphael SOYER (Russian / American, 1899-1987) *Girl Combing Her Hair*. Color lithograph. Signed. 1970. AP. Regular edition of 250. Provenance: Zorin collection stamp, verso. Registration pin holes in margin corners. Slight creasing in upper right margin corner. 20 x 16 (image), 27¼ x 21¾ (sheet). [54225c] \$375.



192. Seiko TACHIBANA (Japanese, b. 1964) *Origin - Metamorphosis #4*. Intaglio. Signed. 2005. Edition Bon à Tirer 3. 12 x 9 (image), 22½ x 15 (sheet). [341267] \$700.



193. Charles SPITZACK (American, b. 1987) *Storm Moving In*. Woodcut. Signed. 2014. EV. Edition of 14. 9 x 12 (image), 12¼ x 16 (sheet). [343486] \$225.



194. Hiroshi TAGO (Japanese, b. 1957) *Time To Be Transported*. Mezzotint. Signed. Edition of 100. 5¾ x 8¾ (image), 9¾ x 13 (sheet). [344462] \$275.



195. Christie TIRADO (American, b. 1990) *America's Essential Workers*. Linocut on Stonehenge Kraft paper. Signed. 2020. AP. Regular edition of 14. 12 x 9 (image), 15 x 11½ (sheet). [344806] \$450.



196. Rufino TAMAYO (Mexican, 1899-1991) *Dos Cabezas (Two Heads)*. Color etching on Guarro paper. Signed. 1975. Edition 65/75. Published by Ediciones Poligrafa, Barcelona. Reference: Pereda 184. 22 x 29½ (image/sheet). [52576c] \$3,000.



197. Rufino TAMAYO (Mexican, 1899-1991) *Mujer Sonriente (Smiling Woman)*. Color lithograph. Signed. Publisher's blindstamp lower right margin, Rufino Tamayo 1990 copyright blindstamp center lower margin. 1989. Edition 18/110. Published by Kyron Ediciones Gráficas Limitadas, Mexico City. Reference: Pereda 339. 22½ x 28½ (image), 31½ x 43½ (sheet). [55020c] \$2,000. Also available framed.



198. Doris THOMAS (Indigenous Australian, b. 1948) *Snake Dreaming*. Painting on canvas. 11¼ x 17 (canvas). [54888c] \$485.



199. Kouki TSURITANI (Japanese, b. 1967) *She Picks Up the Moon II*. Mezzotint. Signed. 2013. Edition of 40. 3¾ x 3¾ (image), 9 x 8¾ (sheet). [348113] \$180.



200. Walasse TING (Chinese / American, 1929-2010) *Title Page*. From *Hollywood Honeymoon II*. Lithograph. Signed. 1964. Edition 4/20. Printed by Tamarind Institute, Albuquerque. Small ½" tear and soft crease at upper left margin edge. 26½ x 31¾ (image), 28 x 38 (sheet). [54793] \$600.



201. Humio TOMITA (Japanese, b. 1934) *76-37*. Color serigraph. Signed. Edition 24/50. 9⅞ x 9⅞ (image), 15½ x 14¼ (sheet). [53662] \$400.



202. Francisco TOLEDO (Mexican, 1940-2019) *Les oiseaux / Los pájaros (The Birds, Yellow Variation)*. Color lithograph on Arches. Signed. EA. Regular edition of 100. 16 x 22 (image), 19 $\frac{5}{8}$ x 25 $\frac{3}{4}$ (sheet). [54027] \$1,800.



204. Nora Spicer UNWIN (British / American, 1907-1982) *Warm Afternoon*. Wood engraving. Signed and titled. 1951. Published by The Woodcut Society, New York and accompanied by the original folder. Hinge residue at upper corners. Previous linen hinges, verso. 5 x 7 $\frac{3}{4}$ (block), 6 $\frac{7}{8}$ x 10 $\frac{7}{8}$ (sheet). [54250c] \$385.



205. Shigeki TOMURA (Japanese, b. 1951) *Milano, in February*. Etching and drypoint with chine-collé. Signed. 1994. Edition of 30. 5 $\frac{3}{4}$ x 8 $\frac{3}{4}$ (image), 10 $\frac{1}{2}$ x 15 $\frac{1}{2}$ (sheet). [341571] \$425.



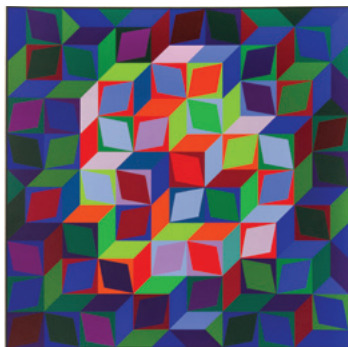
203. Rembrandt VAN RIJN (Dutch, 1609-1669) *The Raising of Lazarus, The Larger Plate*. Etching. 19th century impression. Date of Plate c. 1632. Reference: Bartsch 73, Harrison 95, Biörklund 34-2. A few skillfully repaired tears/losses at edges of sheet, verso. Trimmed to platemark. 14 $\frac{1}{2}$ x 10 $\frac{1}{8}$ (plate/sheet). [54181c] \$1,800.



206. Reginald Wilmer VAUGHAN (American, 1869-1958) *Tow Boat Bait*. Drypoint. Signed. 7 x 5 (image), 9 $\frac{3}{8}$ x 8 $\frac{1}{8}$ (sheet). [47382] \$275.



207. Robert VON NEUMANN (German, 1888-1976) *Hauling the Net*. Lithograph. Signed. 1950. Published by Associated American Artists. 10¼ x 14½ (image), 12½ x 17½ (sheet). [54639c] \$325.



208. Victor VASARELY (Hungarian / French, 1908-1997) *Composition*. From *Hommage à l'Hexagone*. Color serigraph. Signed. Blindstamp lower left corner. c. 1968. Edition 17/200. Published by Denise René Editeur, Paris. Light surface scratches visible within image, primarily in outer 4 inches on all sides. One black mark approx. 1½" on lower left corner within image. 23⅞ x 23⅜ (image), 26¾ x 26¾ (sheet). [54509c] \$850.



209. Lynd WARD (American, 1905-1985) *Man Climbing*. Wood engraving. Signed and titled. 1959. A few soft creases. 14 x 5⅞ (block), 17⅞ x 10 (sheet). [53851c] \$350.



210. George C. WALES (American, 1868-1940) *Master*. Drypoint. Signed. 1911. 7 x 5 (image), 11½ x 9⅞ (sheet). [48987c] \$185.



211. Bernar VENET (French, b. 1941) *Grib (II)*. Etching, polymer gravure, carborundum, and photo etching. Signed. 2016. Edition 1/60. Printed by Peter Kosowicz. Published by Thumbprint Editions, London. 28½ x 43 (plate), 36 x 49½ (sheet). [333552] \$4,500.



212. Lynd WARD (American, 1905-1985) *Clouded Over*. Wood engraving. Signed. 1948. 6 x 9 (block), 9⅞ x 13⅞ (sheet). [53728c] \$900.



213. Geri WADDINGTON (British, b. 1953) *Trio*. Wood engraving. Signed. Edition of 100. Crease at top of sheet. $2\frac{1}{4} \times 4\frac{1}{4}$ (image), $5 \times 7\frac{1}{4}$ (sheet). [345889] \$70.



215. Carol WAX (American, b. 1953) *Sewing Patterns*. Vitreograph. Signed. 1997. Edition of 50. $23\frac{3}{4} \times 29\frac{1}{2}$ (image), $30 \times 36\frac{1}{2}$ (sheet). [17749] \$800.



216. Reynold Henry WEIDENAAR (American, 1915-1985) *Valley of Wrath*. Mezzotint. Signed. Artist's mark in plate, lower left. 1951. Published by Associated American Artists. Toned verso. $10\frac{1}{2} \times 12\frac{3}{4}$ (plate), 13×16 (sheet). [54629c] \$350.



214. Mikio WATANABE (Japanese, b. 1954) *Retenue*. Mezzotint. Signed. 2011. Edition of 90. $7\frac{7}{8} \times 4\frac{5}{8}$ (image), $15\frac{1}{2} \times 11$ (sheet). [43452] \$600.



217. Art WERGER (American, b. 1955) *No Way Out*. Color etching and aquatint. Signed. 2008. Edition of 40. 24×36 (image), $27\frac{1}{2} \times 39$ (sheet). [347563] \$1,500.



218. Stow WENGENROTH (American, 1906-1978) *Cape Ann Willows*. Lithograph. Signed. Blindstamp lower left margin. 1947. Published by The Society of Print Connoisseurs. Reference: Stuckey 164. $8\frac{3}{4} \times 13\frac{1}{2}$ (image), $10\frac{1}{8} \times 16$ (sheet). [54485c] \$325.



219. Stow WENGENROTH (American, 1906-1978) *Pennsylvania Country*. Lithograph. Signed. 1943. Edition of 40. $8\frac{1}{4} \times 15\frac{5}{8}$ (image), $12\frac{1}{2} \times 19\frac{1}{4}$ (sheet). [54503c] \$400.



220. Fred WESSEL (American, b. 1946) *Aquarium (Deep Sea)*. Lithograph. Signed. Trial Proof. $20\frac{1}{2} \times 30$ (image/sheet). [30321c] \$750.



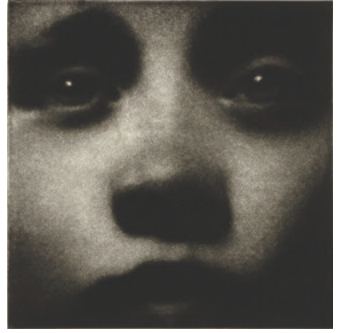
221. James Abbott McNeill WHISTLER (American, 1834-1903) *La Mère Malade (Mother and Daughter)*. Lithograph on fine China paper. 1897. Small edition. Reference: Levy 77. $7\frac{1}{8} \times 6\frac{1}{4}$ (image), $15\frac{5}{8} \times 9\frac{3}{8}$ (sheet). [54662c] \$1,750.



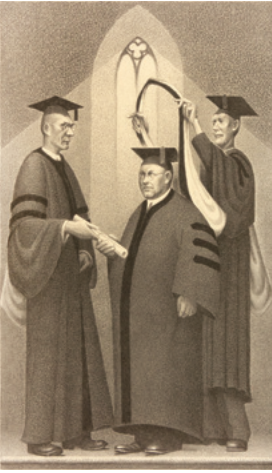
222. James Abbott McNeill WHISTLER (American, 1834-1903) *Annie Seated*. Etching. Signed and titled in the plate. 1858-1859. Reference: Kennedy 30 ii/ii. Hinge residue at upper corners. Toned verso. $5\frac{1}{8} \times 3\frac{3}{4}$ (plate), $7\frac{1}{2} \times 5\frac{1}{2}$ (sheet). [54663c] \$1,500.



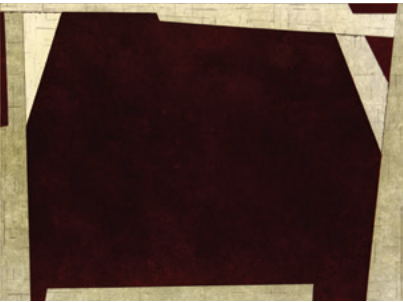
223. James Abbott McNeill WHISTLER (American, 1834–1903) *The Kitchen*. From *Twelve Etchings from Nature*. Etching. Signed in the plate. Date of Impression 1858. Artist's mark (butterfly) in lower left margin. Reference: Kennedy 24 ii/iii. Provenance: Collection of H.H. Benedict (1844-1935), verso (Lugt 2936). Name and address of Delâtre included. Slight toning and soiling overall. 8 $\frac{7}{8}$ x 6 $\frac{1}{8}$ (plate), 13 x 9 $\frac{1}{4}$ (sheet). [53992c] \$6,200.



224. Cleo WILKINSON (Australian, b. 1959) *Witness II*. Mezzotint. Signed. 2016. AP edition of 5. 4 x 4 (plate), 10 x 7 $\frac{7}{8}$ (sheet). [345669] \$200.



225. Grant WOOD (American, 1891-1942) *Honorary Degree*. Lithograph. Signed. 1938. Edition of 250. Published by Associated American Artists. Reference: Cole 4. 11 $\frac{7}{8}$ x 7 (image), 16 $\frac{1}{8}$ x 11 $\frac{1}{4}$ (sheet). [54693c] \$2,000.



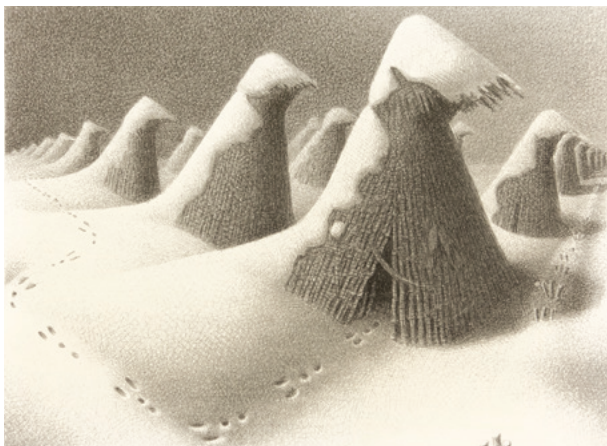
227. John WILLIS (American, b. 1950) *Conflicted Space #14*. Monoprint with constructed materials. Signed. 2016. Edition of 5. 10 x 13 $\frac{1}{2}$ (image), 15 x 17 $\frac{1}{2}$ (sheet). [333091] \$450.



226. Charles Banks WILSON (American, 1918-2013) *Comanche Portrait*. Lithograph. Signed. 1941-1942. Published by Associated American Artists. 10 $\frac{1}{2}$ x 14 $\frac{1}{2}$ (image), 12 $\frac{1}{2}$ x 17 $\frac{3}{8}$ (sheet). [54424c] \$350.



228. Jim WESTERGARD (Canadian, b. 1939) *Nostalgia*. Wood engraving. Signed. 2012. Edition of 30. 6 x 4 (image), 9 $\frac{1}{2}$ x 7 $\frac{1}{2}$ (sheet). [345966] \$100.



229. Grant WOOD (American, 1891-1942) *January*. Lithograph. Signed. 1938. Edition of 250. Published by Associated American Artists. Reference: Cole 3. 9 x 11 $\frac{7}{8}$ (image), 12 x 15 $\frac{1}{8}$ (sheet). [54433c] \$4,200.



230. Grant WOOD (American, 1891-1942) *February*. Lithograph. Signed. 1941. Edition of 250. Published by Associated American Artists. Reference: Cole 17. 8 $\frac{7}{8}$ x 11 $\frac{1}{8}$ (image). [55017c] \$7,200. Also available framed.



231. Keisuke YAMAMOTO (Japanese, b. 1961) *Light Time Silence #15*. Lithograph. Signed. 1998. Edition of 23. 23 $\frac{1}{2}$ x 33 $\frac{1}{2}$ (image), 27 $\frac{3}{4}$ x 37 $\frac{1}{4}$ (sheet). [341252] \$650.



232. Vladimir ZUEV (Russian, b. 1959) *Book Illustration from "Master and Marguerite" by M. Bulgakov.* Etching. Signed. 1998. EA. 4¼ x 4½ (image), 7¾ x 7¼ (sheet). [26134] \$250.



233. Ossip ZADKINE (Belarusian-born, French, 1890-1967) *La Musique.* Color lithograph. Signed. 1965. Épreuve d'artiste. Regular edition of 75. Reference: Czwiklitzer 134. 11¼ x 8¾ (image), 17⅞ x 14 (sheet). [53629Bc] \$350.



234. Naizheng ZHU (Chinese, 1935-2013) *Quiet Evening.* Ink drawing, scroll mounting with silk. Signed. Artist's seal. c. 1980. Faint toning at upper third of image. 23½ x 23¼ (image/sheet), 33 x 27 (with silk border). [54909c] \$2,500.



235. Dion Pickering ZWIRNER (American, b. 1947) *Elsewhere Revisited.* Mixed media on paper. Signed. 2022. 5½ x 16½ (image), 15 x 22 (sheet). [349342] \$950.

A note from gallery owner Sam Davidson:

Fifty-three years ago when I assembled stock catalogs for Ferdinand Roten Galleries in Baltimore, I never dreamed I would be publishing catalogs for my own gallery, 50 years later. Then, as now, the idea was to promote the contemporary artists we represented, recent antique and contemporary works consigned by collectors, publishers, and successful auction purchases.

Sometimes the catalogs also served as a vehicle for emphasizing national or international exhibitions we had produced, in which we highlighted various original print-making processes, such as wood engraving, mezzotint, or artist stamps. Other catalogs concerned a particularly important collection we had put together by a single artist, school, or period.

Understandably, times are changing and today these original printmaking processes are being eclipsed by digital processes, partly driven by cost, and even more by audience "reach" considerations. This is due, in part, to the increasing absence of art education (applied and historic) in our educational systems. I am excited though, by how printmaking is evolving in the digital age on a parallel track. I do miss where the artist is directly involved with the mark-making and its direct impact on the printed surface.

It has been an important aspect of my work over the last 50 years to publish these catalogs. I did not do it alone. Throughout this time I have been helped by the ideas and suggestions from very capable associates, for which I am grateful. Your interest and support as members of this community have meant everything to me. I hope you have enjoyed the catalogs as much as I have in publishing them.



To see more work from an artist, or larger images of pieces in the catalog, please visit our website at www.davidsongalleries.com/collections/50th-anniversary-catalog

CATALOG LIST NO. 106—SPRING 2023

CONTACT: Rebecca McDonald, (206) 624-7684
or rebecca@davidsongalleries.com

An additional impression may be available for certain works. Listed prices apply to the impression shown. Prices may vary for additional impressions. All items are guaranteed as described. Certificate of authenticity is available upon request. Please contact the gallery with questions or to discuss a work in detail. **All dimensions are given in inches, height precedes width.** Orders are shipped upon receipt of full payment. Works are normally shipped insured via UPS unless other arrangements are specified. Shipping charges vary and are dependent on size and value of items ordered. Washington State residents must add appropriate sales tax. Works may be returned to the gallery for any reason within two weeks of purchase for a refund less shipping and associated restocking fees. Returned works should be securely packed and fully insured.

Please inform the gallery of any special collecting interests. Davidson Galleries is willing to consider purchasing or consigning fine original prints individually or as collections.

Davidson Galleries is a charter member of the **International Fine Print Dealers Association** and is committed to its strict ethical standards.

IFPDA MEMBER

DOWNLOADABLE CATALOGS AVAILABLE

As part of our commitment to produce less waste, we are proud to offer our catalogs as downloadable PDFs through **davidsongalleries.com**. Visit the publications page on the website to download free of charge.

If you would prefer to continue receiving our semi-annual printed catalogs by mail, **annual subscriptions are available for \$12**, deductible from your first catalog purchase. Please contact the gallery for details.



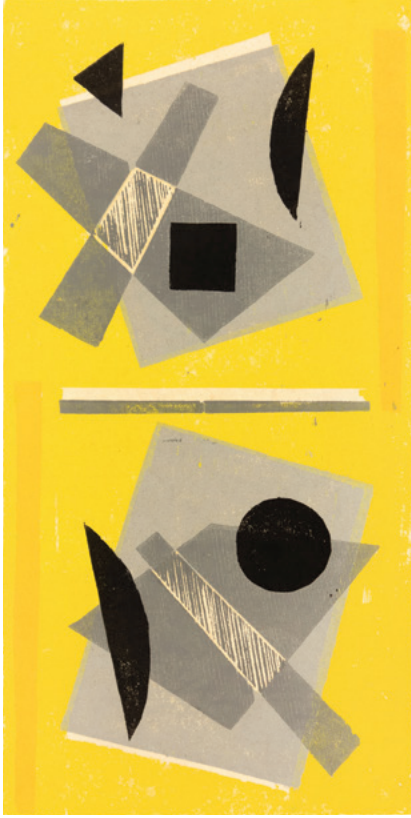
Join our bi-monthly email newsletter!

DAVIDSON GALLERIES

313 Occidental Avenue South | Seattle, Washington 98104
www.davidsongalleries.com | Open Tuesday-Saturday 11-5:30

CHANGE SERVICE REQUESTED

CATALOG LIST NO. 106—SPRING 2023



236. Werner DREWES (German / American, 1899-1985) *Twin Formations in Grey*. Color woodcut. Signed. 1982. Edition 24/XV. Reference: Rose 400. Fold at upper right margin corner. Soiling at center left margin. Skinning on lower right, verso. 9 1/8 x 17 7/8 (image), 15 1/2 x 22 (sheet). [54830c] \$1,300.

\$6.00