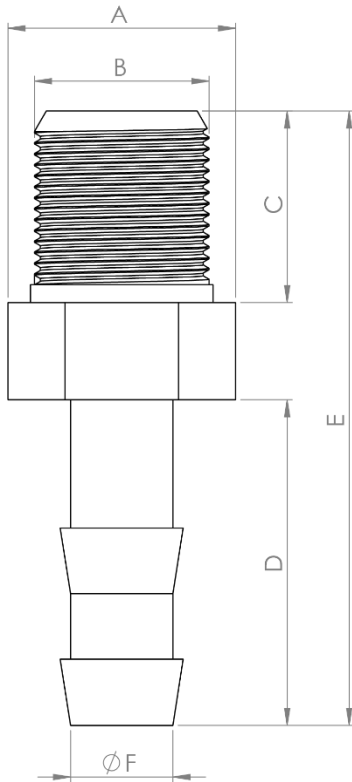




DRAIN PLUG



Model Number	A in (mm)	B in (mm)	C in (mm)	D in (mm)	E in (mm)	∅F in (mm)	Weight Lbs (kg)	Blower compatibility
DRP01	0.86 (22)	0.67 (16.9)	0.73 (18.5)	1.24 (31.5)	2.3 (60)	0.375 (10)	0.02 (0.01)	P15/P20/P25 S12/S14
DRP3550	1.29 (32.7)	1.0 (26)	0.9 (22.7)	1.63 (41.4)	2.9 (73.5)	0.75 (20)	0.02 (0.01)	P30/P35 S16/S18

FEATURES

Polypropylene drain plug mounted to the bottom or lower part of the blower housing. Its primary purpose is to allow for the drainage of accumulated condensation, moisture, or any liquid that might collect inside the blower housing over time.

- Color: Black
- Material: Polypropylene
- Temperature Range: -30° to 150°F
- Thread Size: 3/8 in
- Thread Type: NPT
- For Hose ID: 3/8 in
- Hex Head size: 3/4 in



Project Name	
Date	
Engineer / Sales Rep	
Client	
Contractor	

Property rights to all drawings, details, representations, ideas, data, notes and specifications either copies or originals thereof that may be incorporated into the design and/or project are the property solely of Plastec ventilation, inc. Permission for any copies of said copyrighted materials, drawings, details, representations, ideas, data, notes and specifications either originals or copies thereof to be made, copied or altered by any person, business, or corporation may only be authorized with the expressed written permission of Plastec ventilation, inc. By the use of this data, the user acknowledges that he/she has read and understand all of the notes included herein.