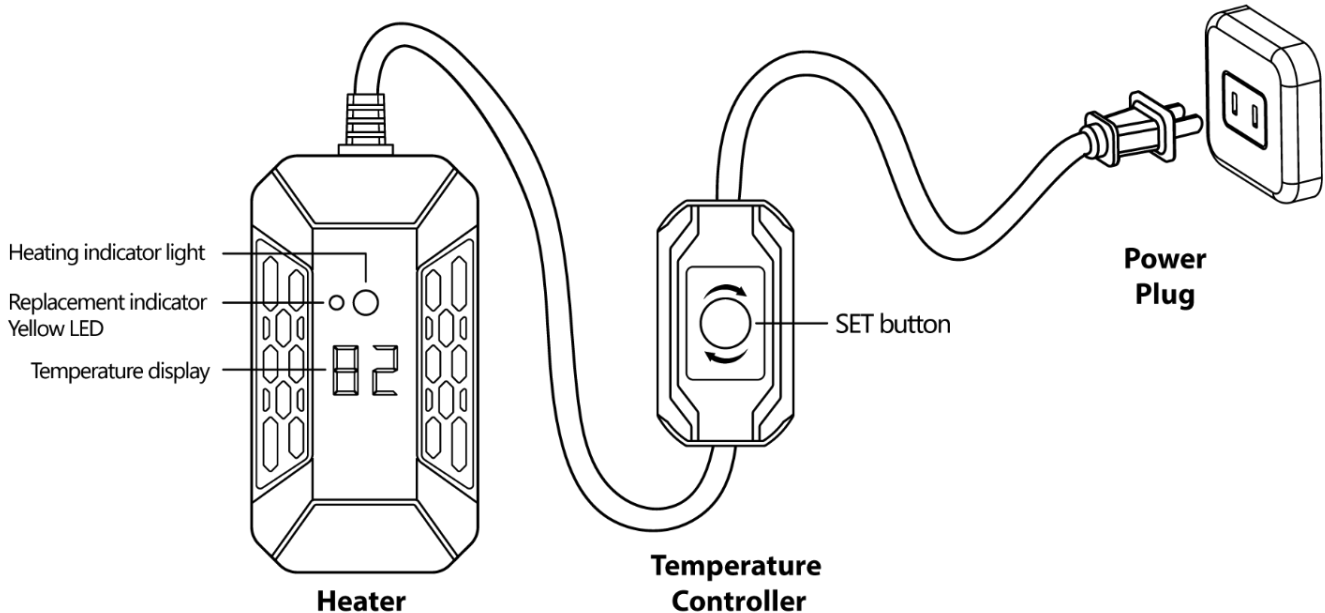




Aquarium Co-Op Heater Instructions

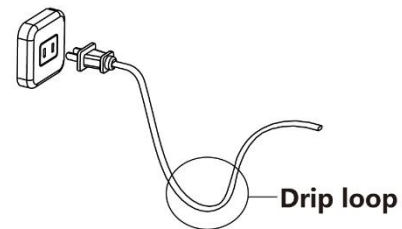
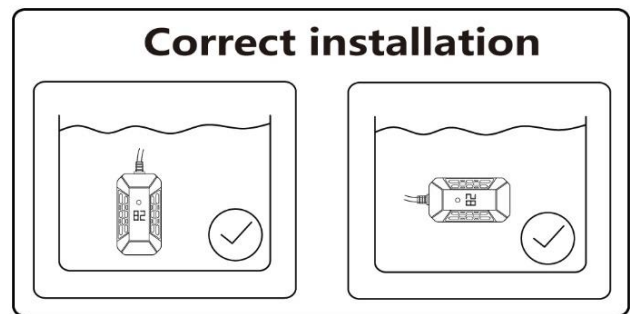


Note:

- Do not attempt to disassemble. Disassembling will void the 1-year warranty.
- Do not plug in the unit unless the heater is completely submerged underwater.
- Do not let the temperature controller and power plug get wet.

Installation Guide:

1. Place the heater inside the aquarium without plugging it in yet. Position it in either a vertical or horizontal orientation. To prevent hot spots, put it in an area with good water flow. The heater must be completely covered in water and not buried in the substrate.
2. After the heater has been submerged in the water for 20 minutes, plug it into an electrical outlet. To prevent water from flowing down the heater's power cable into the electrical outlet, create a "drip loop" with the power cord so that part of the cord dips down lower than the outlet.



3. When the heater is first powered on, the blinking temperature display on the heater shows the desired temperature in degrees Fahrenheit (°F). After 3 seconds, the temperature display stops blinking, and the current water temperature is shown. The heating indicator light glows red when the unit is actively heating the water.

4. To adjust the heater to the desired temperature, press the SET button once on the temperature controller. While the temperature display is still blinking, press the SET button again to change the desired temperature by 1°F increments. (The desired temperature cycles from 64°F to 91°F, meaning that you need to increase the heater up to the highest temperature setting of 91°F before it goes back down to 64°F.) When the desired temperature is reached, do not touch the SET button for 3 seconds. Once the blinking stops, the desired temperature has been saved.
5. To remove the heater from the water, unplug the heater and let it cool for 10 minutes before touching it. To do a large water change that exposes the heater to air, unplug the heater, change the water, and then plug in the heater after the tank is filled again.

Error Codes and Indicator Lights:

Code	Cause	Recommended Action
Er	Heater is out of water	Submerge the heater completely underwater
H1	Internal temperature probe is damaged	Unplug the heater and contact Aquarium Co-Op customer support
H2		
E1		
E2		
E8		
EE	Water temperature exceeds 97°F	Operate the heater at a temperature cooler than 97°F
Red Light	Heater is actively heating the water	No action needed
Yellow Light	Heater has reached 17,520 hours of service (2 years)	Consider replacing the heater for optimal reliability