

TURBO COMMANDER APP

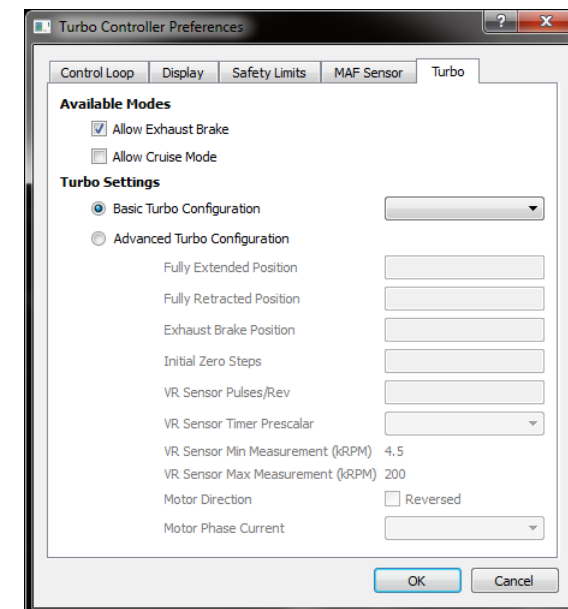
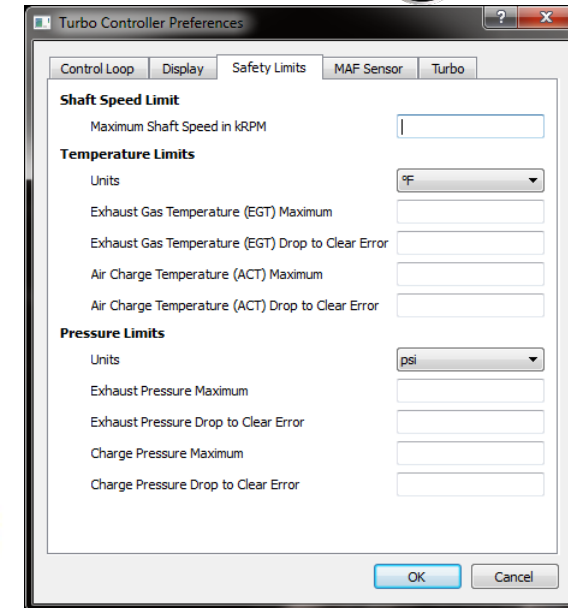
For Android 



TURBO COMMANDER

For Windows XP, 7, 8 

Turbo Commander	
Motor Position	32000:32000
Mass Air Flow	1506.2 Hz
Shaft Speed	0.0 kRPM
Charge Pressure	0.16 psi
Exhaust Pressure	0.22 psi
Barometric Pressure	14.85 psi
Board Temperature	91.5 °F
Inlet Temperature	82.9 °F
Charge Temperature	X
Exhaust Temperature	X
Throttle Position	0.0%
Cruise Mode	N/A
Exhaust Brake	N/A
Stepper Motor	Ok
Safety Limits	N/A



Contact

Suprock Technologies, LLC
inquiries@suprocktech.com
www.suprocktech.com

Measure

Synchronous at 1ksps:

- 3x Type K thermocouple inputs.
- 1x Local operating temperature.
- 2x Pressure 0-100 PSI gauge.
- 1x Barometric pressure sensor.
- 1x VR sensor input, shaft speed.
- 1x Mass airflow input.
- 1x 0-5V analog input.
- 1x User switch input.
- Actuator position (stepper).
- Actuator status (solenoid).
- CAN actuator position

Monitor

Status at a glance + high res data capture:

- Record live data streams over USB.
- Display live data on Android devices with **Bluetooth** connectivity.
- Record over USB while viewing live display on Android.

Control

Based on user defined set points:

- Up to 4 amp stepper motors.
- Solenoid actuation.
- CAN bus for HOLSET