

Prosport Digital dual air press gauge

- A. INPUT RESISTANCE: 10 ~ 180 Ω
- B. UNITS TYPE: PSI / Bar
- C. AIR PRESS GAUGE DISPLAY: DIGITAL TYPE → 0-220 PSI (0-15.2 Bar)
- D. DPI OF DIGITAL DISPLAY= 1 PSI / 0.1 Bar
- E. IF THE GAUGE CAN NOT READ THE AIR SENSOR SIGNAL, THE DIGITAL NUMBER WILL COUNT DOWN TO "0" AND FLASH FOR WARNING.

INSTALLATION INSTRUCTIONS:

GAUGE POWER WIRE HARNESS:

- Red- Ignition Switch 12v (+)
- Black- Engine Ground (-)
- Orange- Optional Headlight 12v (+)

SENOSR WIRE HARNESS:

- DIGITAL AIR PRESS UPPER DISPLAY
- Green – Connect to air press sensor "G"
- Black – Connect to air press sensor "M"

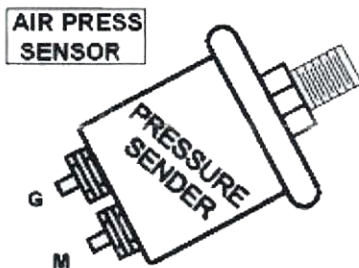
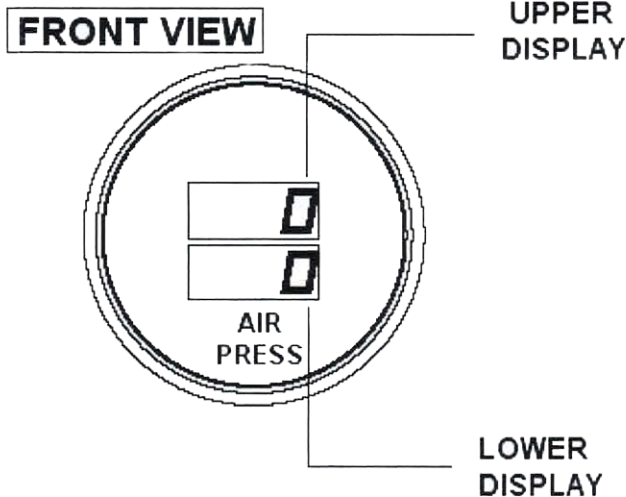
DIGITAL AIR PRESS LOWER DISPLAY

- Blue-connect air press sensor "G"
- Black-connect air press sensor "M"

AIR PRESS SENSOR :

- G - Connect to gauge green (Blue) wire.
- M - Connect to gauge black wire.

1. Disconnect the negative battery cable.
2. Connect the orange wire to the head lamp switch to dim the gauge when the headlights are turned on.
3. Connect the red wire to 12 volt switched source. When wiring this connection install a 3 amp fuse within 20 inches of the source. For easy installation in the fuse panel you can get an "add a circuit" which looks like a fuse with an additional wire attached; this is available for sale on <http://prosportgauges.com> or your local auto parts store.
5. The green (Blue) wire needs to be connected to the "G" post of the sender.
6. Connect the Black Wire to any chassis ground connection, or you can run a wire to the negative side of the battery.
7. Reconnect the negative battery cable.



BACK VIEW

