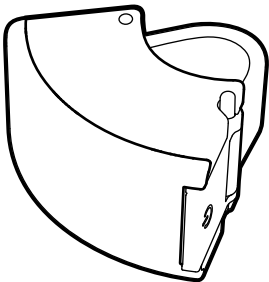


BOOKMAN

CURVE REAR LIGHT 2



ENGLISH

ENGLISH

Curve Rear Light is a rechargeable, water resistant rear light for bicycle.

Warnings

Do not look directly into the light beam or shine into eyes of others.

Do not submerge under water. Curve Rear Light is water resistant under normal conditions, but not waterproof.

Bookman AB does not accept any liability for injuries or other damages resulting in the use of this product under any circumstances.

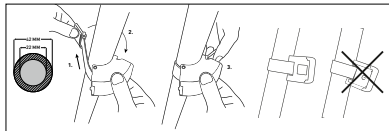
Warranty

Bookman Curve Rear Light carry a one year warranty from the original purchase date to the original owner. (proof of purchase is required). The warranty covers any manufacturing defects in material or workmanship. Issues not covered by warranty include normal wear and tear, improper installation, attempting to access or modify electronics, damage or failure due to accident, misuse, abuse and/or neglect.

Contents

- 1 × rear light
- 1 × usb/micro usb charging cable

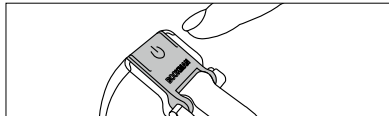
Mounting



1. Hold the light against the seat pole. Pull to stretch out the rubber strap.
2. Secure pins into grooves.
3. Push to click-lock the clasp.

Curve Rear Light fits 22 – 42 mm saddle pole diameters.
(Warning: Mounting on oversize bars can subject the strap to undue stress.)

Operation



On/off: Press and hold for 0,7 seconds
Change mode: One click

Modes	Lumens	Run-time
Steady 100%.....	37 lumens	2.5 hours
Flashing 100%.....	37 lumens	12 hours
Steady 30%	15 lumens	6.5 hours
Flashing 30%.....	15 lumens	32 hours
Pulse 100%.....	37 lumens	10 hours

Battery indicator



When Curve is on:

Less than 20% battery – 3 **red** flashes every 10 seconds

Less than 10% battery – 3 **red** flashes every 5 seconds

Less than 5% battery – 3 **red** flashes every 2 seconds

When Curve is turned off:

More than 20% battery life left – six 6 **green** flashes

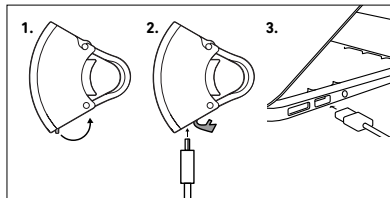
Less than 20% battery life left – 6 **red** flashes

When Curve is charging:

If charging – steady **red** Light

If fully charged – steady **green** Light

Charging



1. Open the tab on the bottom.

2. Connect the micro USB cable.

3. Insert USB plug into powered USB port.

Charge time

2 hours from flat

Battery

Lithium-ion battery

Designed in Sweden

Made in China

Bookman AB, Stockholm, Sweden

www.bookman.se