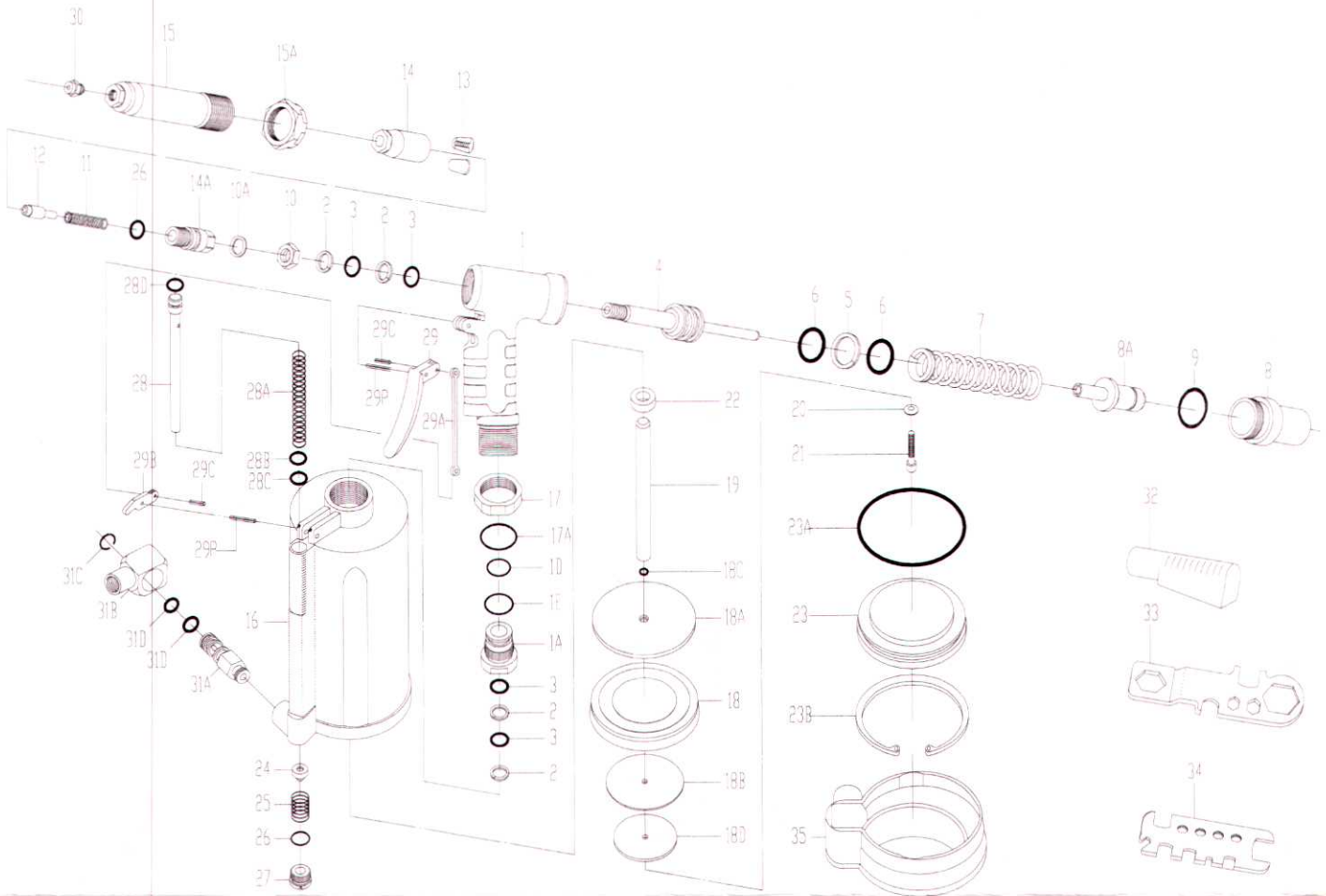


ZT - 1819T 1/4" (6.4mm) Cap. Air-Hydraulic Riveter



ZT - 1819T 1/4" (6.4mm) Cap. Air-Hydraulic Riveter

TECHNICAL DATA

Blind Rivet Setting Capacity

Operating Air Pressure
Traction Power @ 90 Psig
Avg. Air Consumption
Stroke Length
Tool Height
Tool Width
Tool Weight
Min. Hose Size
Air Inlet Size
Hydraulic Fluid

: All blind rivets and blind structural rivets up to and including
1/4"(6.4mm) diameter in all materials.
: 5 - 7 Bar (70 - 100 Psi)
: 1,800 KgF (4.013 LbF)
: 3.5 L (0.125 Ft³) per rivet cycle
: 19mm (3/4")
: 315mm (12-3/8")
: 225mm (8-7/8")
: 2.3 Kg (5.1 Lb)
: 9.5mm (3/8") I.D.
: 1/4" NPT
: Shell Hydraulic Fluid or Equivalent

PARTS LIST

Index	Part #	Description	Index	Part #	Description	Index	Part #	Description
1.	819111g	Hydraulic Section	16.	819401g	Air Cylinder Body	28B.	918202	Brass Collar
1A.	819108	Plunger Rod Guide	17.	918109	Lock Nut	28C.	OR0611	O-Ring
1D.	OR1823	O-Ring	17A.	OR2832	O-Ring	28D.	OR0812	O-Ring
1E.	OR2227	O-Ring	18.	819502	Packing Ring	29.	612611	Trigger
2.	BR1217	Back-Up Ring (4)	18A.	819503	Front Head Disc	29A.	918622	Linkage
3.	OR1217 -1	O-Ring (4)	18B.	819504	Rear Head Disc	29B.	819603	Rocker Arm
4.	819301	Hydraulic Plunger	18C.	OR0509	O-Ring	29C.	SP3006	Spring Pin (2)
5.	BR2431	Back-Up Ring	18D.	918514	Rear Disc	29P.	SP3018	Spring Pin (2)
6.	OR2431	O-Ring (2)	19.	819501	Plunger Rod	30.	612706	NosePiece 3/16"(4.8mm)
7.	819309	Return Spring (Y)	20.	PW0616	Washer	612716	NosePiece 3/16"(4.8mm)-"T"Rivet (Opt.)	
8.	819102	Rear Gland	21.	610020	Lock Screw	612708	NosePiece 1/4" (6.4mm)	
8A.	214103	Vacuum Tube	22.	918505	Bumper Ring	612718	NosePiece 1/4" (6.4mm)-"T"Rivet (Opt.)	
9.	OR3034	O-Ring	22A.	819500	Piston Ass'y (#18 - #22)(ns)	31.	92L2A18B	Swivel Joint Ass'y (31A - 31D)(ns)
10.	214306	Nut	23.	819402	Air Cylinder Cap	31A.	819715	Male Inlet Body
10A.	vw1317	Wave Washer	23A.	OR8591	O-Ring	31B.	92203A	Female Inlet Body (1/4"-18NPTF)
11.	214308-A	Spring	23B.	CH8084	Retaining Ring	31C.	EC1317	Snap Ring
12.	214302	Jaw Pusher	24.	918207	Throttle Valve	31D.	OR1116	O-Ring (2)
13.	819303	Jaw "L" (2)	25.	656204	Throttle Valve Spring	32.	612901	Deflector
14.	819324	Jaw Housing	26.	OR1417	O-Ring (2)	33.	612904	Multi-Wrench (A)
14A.	819305	Jaw Housing Coupler	27.	612206	Valve Plug	34.	918905	Multi-Wrench (B)
15.	819105	Head	28.	918200	Valve Tube	35.	819403	Rubber Boot
15A.	819106	Lock Nut	28A.	918204	Valve Tube Spring			