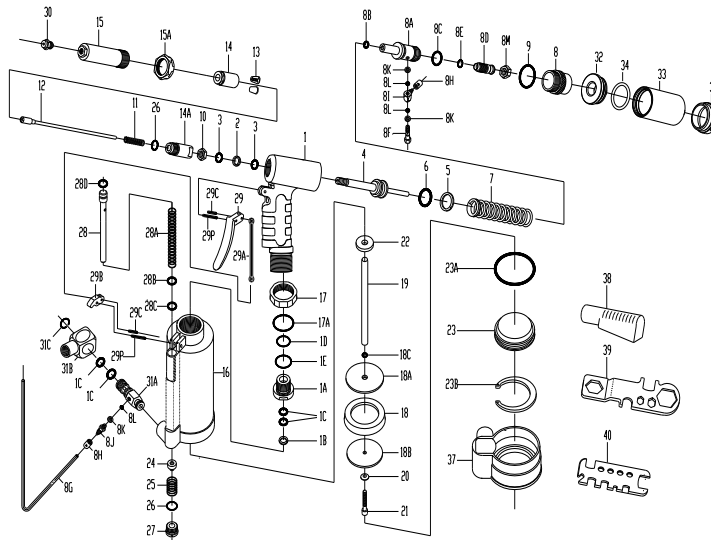


ZT - 0618VS 3/16" (4.8mm) Cap. Air-Hydraulic Riveter W /



TECHNICAL DATA

Blind Rivet Setting Capacity	All Conventional blind rivets from 3/32", 1/8", 5/32" in all materials and 3/16" conventional style rivets up through steel/steel material. Also for 3/16" Aluminum only structural blind rivets
Operating Air Pressure bar(psi)	5 - 7 (70 - 100)
Traction Power @ 90 Psig kgf(lbf)	596 (1,320)
Avg. Air Consumption l(ft ³) per rivet cycle	1.2 (0.042)
Stroke Length inch(mm)	11/16 (18)
Tool Height inch(mm)	11 (280)
Tool Width inch(mm)	7-1/2 (191)
Tool Weight kgs(lbs)	1.55 (3.41)
Min. Hose Size inch(mm)	3/8 (10)
Air Inlet Size inch-NPT/PT	1/4
Hydraulic Fluid	Shell Hydraulic Fluid or Equivalent

PARTS LIST

Index #	Part #	Description	Quantity	Index #	Part #	Description	Quantity
1	91811B-1	Hydraulic Section	1	18C.	OR0509	O-Ring	1
1A.	618108	Plunger Rod Guide	1	19	618501	Plunger Rod	1
*1B.	BR1116	Back-Up Ring	1	20	PW0516	Washer	1
*1C.	OR1116	O-Ring (4)	4	21	HC00508020	Lock Screw	1
*1D.	OR1823	O-Ring	1	*22	918505	Bumper Ring	1
*1E.	OR2227	O-Ring	1	22A.	618500	Piston Ass'y. (18~22)	1
*2	BR1014	Back-Up Ring	1	23	918402	Air Cylinder Cap	1
*3	OR1014	O-Ring (2)	2	23A.	OR5461	O-Ring	1
4	918301	Hydraulic Plunger	1	23B	CH6063	Retaining Ring	1
*5	BR2025	Back-Up Ring	1	24	918207	Throttle Valve Body	1
*6	OR2025	O-Ring	1	25	656204	Throttle Valve Spring	1
7	618309	Return Spring (Y)	1	26	OR1417	O-Ring (2)	2
8	918112	Rear Gland	1	27	612206	Valve Plug	1
8A.	612123	Vacuum Tube Ass'y	1	28	618200	Valve Tube Ass'y	1
*8B.	OR0609	O-Ring	1	28A.	618204	Valve Tube Spring	1
*8C.	OR1621	O-Ring	1	28B.	918202	Brass Collar	1
8D.	612114	Vacuum Regulator	1	*28C.	OR0611	O-Ring	1
*8E.	OR0913	O-Ring	1	28D.	OR0812	O-Ring	1
8F.	612713	Socket	1	29	612611	Trigger	1
8G.	918716	Air Hose	1	29A.	918612	Linkage	1
8H.	612711	Cap (2)	2	29B.	918603	Rocker Arm	1
8I.	612712	Swivel	1	29C.	SP3006	Spring Pin (2)	2
8J.	612717	Socket(Lower)	1	29P.	SP3018	Spring Pin (2)	2
8K.	612714	Washer (3)	3	30	612703	Nosepiece 3/32"(2.4mm)	1
8L.	OR0306	O-Ring (3)	3		612704	Nosepiece 1/8" (3.2mm)	1
8M.	612115	Lock Nut	1		612705	Nosepiece 5/32" (4.0mm)	1
9	OR2225	O-Ring	1		612706	Nosepiece 3/16" (4.8mm)	1
10	918306	Nut	1	31	92L2A18AV-ZIPP	Swivel Joint Ass'y.(31A - 31D)(ns)	1
11	612308	Spring	1	31A.	612725	Male Inlet Body(V)	1
12	612312	Jaw Pusher	1	31B.	92203A	Female Inlet Body (1/4"-18NPTF)	1
*13	612303	Jaw "M" (2)	2	31C.	EC1317	Snap Ring	1
14	612314	Jaw Housing	1	32	819914	Front Cap	1
14A.	612305	Jaw Housing Coupler	1	33	318901	Collection Bottle	1
15	612105	Head	1	34	OR3036	O-RING	1
15A.	918106	Lock Nut	1	36	819922	Rear Cap	1
16	618401B-1	Air Cylinder Body	1	37	918403	Rubber Boot	1
17	918109	Lock Nut	1	38	612901	Deflector	1
*17A.	OR2832	O-Ring	1	39	612904	Multi-Wrench (A)	1
18	918502	Packing Ring	1	40	918905	Multi-Wrench (B)	1
18A.	918503	Front Head Disc	1				
18B.	918504	Rear Head Disc	1				