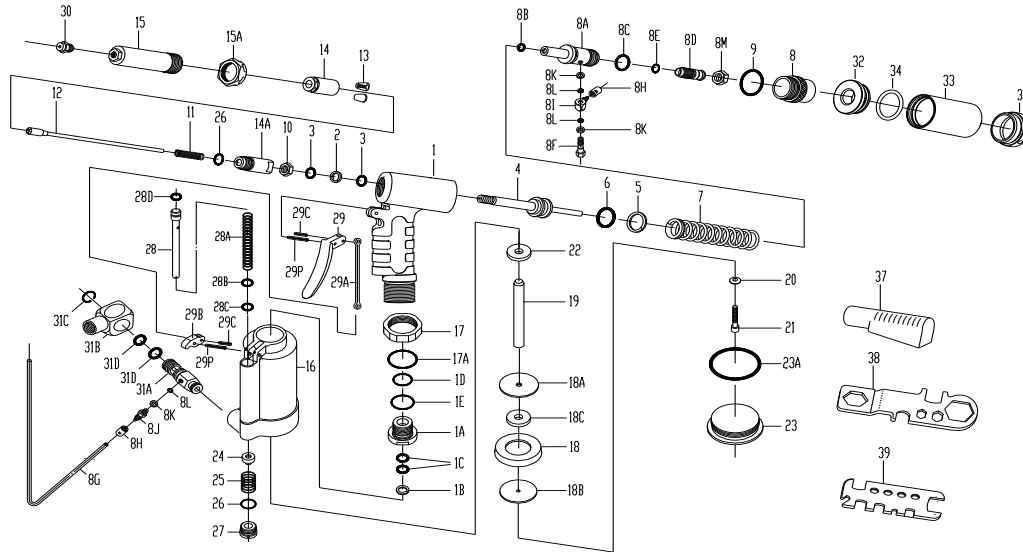


ZT - 0318VS 5/32" (4.0mm) Cap. Air-Hydraulic Riveter W /



TECHNICAL DATA

Blind Rivet Setting Capacity Operating Air Pressure bar(psi) Traction Power @ 90 Psig kgf(lbf) Stroke Length inch(mm) Tool Height inch(mm) Tool Width inch(mm) Tool Weight kgs(lbs) Min. Hose Size inch(mm) Air Inlet Size inch-NPT/PT	All blind rivets up to and including 5/32"(4.0mm) diameter in Alum./Steel. 5 - 7 (70 - 100) 350 (770) 11/16 (18) 10 (254) 7-5/16 (186) 1.3 (2.86) 3/8 (10) 1/4
--	---

PARTS LIST

Index #	Part #	Description	Q'ty	Index #	Part #	Description	Q'ty
1	918111B-1	Hydraulic Section	1	18B.	514504	Rear Head Disc	1
		Plunger Rod Guide	1	18C	318505	Middle Disc	1
	*1B.	BR1217	Back-Up Ring	19	514511	Plunger Rod	1
	*1C.	OR1217	O-Ring (2)	20	PW0616	Washer	1
	*1D.	OR1823	O-Ring	21	HC0061002	Lock Screw	1
	*1E.	OR2227	O-Ring	*22	918505	Bumper Ring	1
	*2	BR1014	Back-Up Ring	22A.	514500	Piston Ass'y. (18-22)	1
	*3	OR1014	O-Ring (2)	23	612402	Air Cylinder Cap	1
4	918301	Hydraulic Plunger	1	23A.	OR5056	O-Ring	1
	*5	BR2025	Back-Up Ring	24	918207	Throttle Valve Body	1
	*6	OR2025	O-Ring	25	656204	Throttle Valve Spring	1
7	618309	Return Spring (Y)	1	26	OR1417	O-Ring (2)	2
8	918112	Rear Gland	1	27	612206	Valve Plug	1
8A.	612123	Vacuum Tube Ass'y	1	28	318200	Valve Tube Ass'y	1
	*8B.	OR0609	O-Ring	28A	318204	Valve Tube Spring	1
	*8C.	OR1621	O-Ring	28B.	918202	Brass Collar	1
	8D.	612114	Vacuum Regulator	*28C.	OR0611	O-Ring	1
	*8E.	OR0913	O-Ring	28D.	OR0812	O-Ring	1
	8F.	612713	Socket	29	612611	Trigger	1
	8G.	918716	Air Hose	29A.	918622	Linkage	1
	8H.	612711	Cap (2)	29B.	918603	Rocker Arm	1
	8I.	612712	Swivel	29C.	SP3006	Spring Pin (2)	2
	8J.	612717	Socket(Lower)	29P.	SP3018	Spring Pin (2)	2
	8K.	612714	Washer (3)	30	612703	Nosepiece 3/32"(2.4mm)	1
	8L.	OR0306	O-Ring (2)		612704	Nosepiece 1/8" (3.2mm)	1
	8M.	612115	Lock Nut		612705	Nosepiece 5/32"	1
	9	OR2225	O-Ring		612706	Nosepiece 3/16"	1
	10	918306	Nut	31	92L2A18AV-ZIPP	Swivel Joint Ass'y.(31A -	1
	11	612308	Spring	31A.	612725	Male Inlet Body(V)	1
	12	612312	Jaw Pusher	31B.	92203A	Female Inlet Body (1/4"-	1
	*13	612303	Jaw "M" (2)	31C.	EC1317	Snap Ring	1
	14	612324	Jaw Housing	31D.	OR1116	O-Ring (2)	2
	14A.	612305	Jaw Housing Coupler	32	819914	Front Cap	1
	15	612105	Head	33	318901	Collection Bottle	1
	15A.	918106	Lock Nut	34	OR3036	O-RING	1
	16	318401B-1	Air Cylinder Body	36	819922	Rear Cap	1
	17	918109	Lock Nut	37	612901	Deflector	1
	*17A.	OR2832	O-Ring	38	612904	Multi-Wrench (A)	1
	18	514502	Packing Ring	39	918905	Multi-Wrench (B)	1
	18A.	514503	Front Head Disc				

*FOR FREQUENCY REPLACEMENT PARTS

DATE : 2014. 01.22