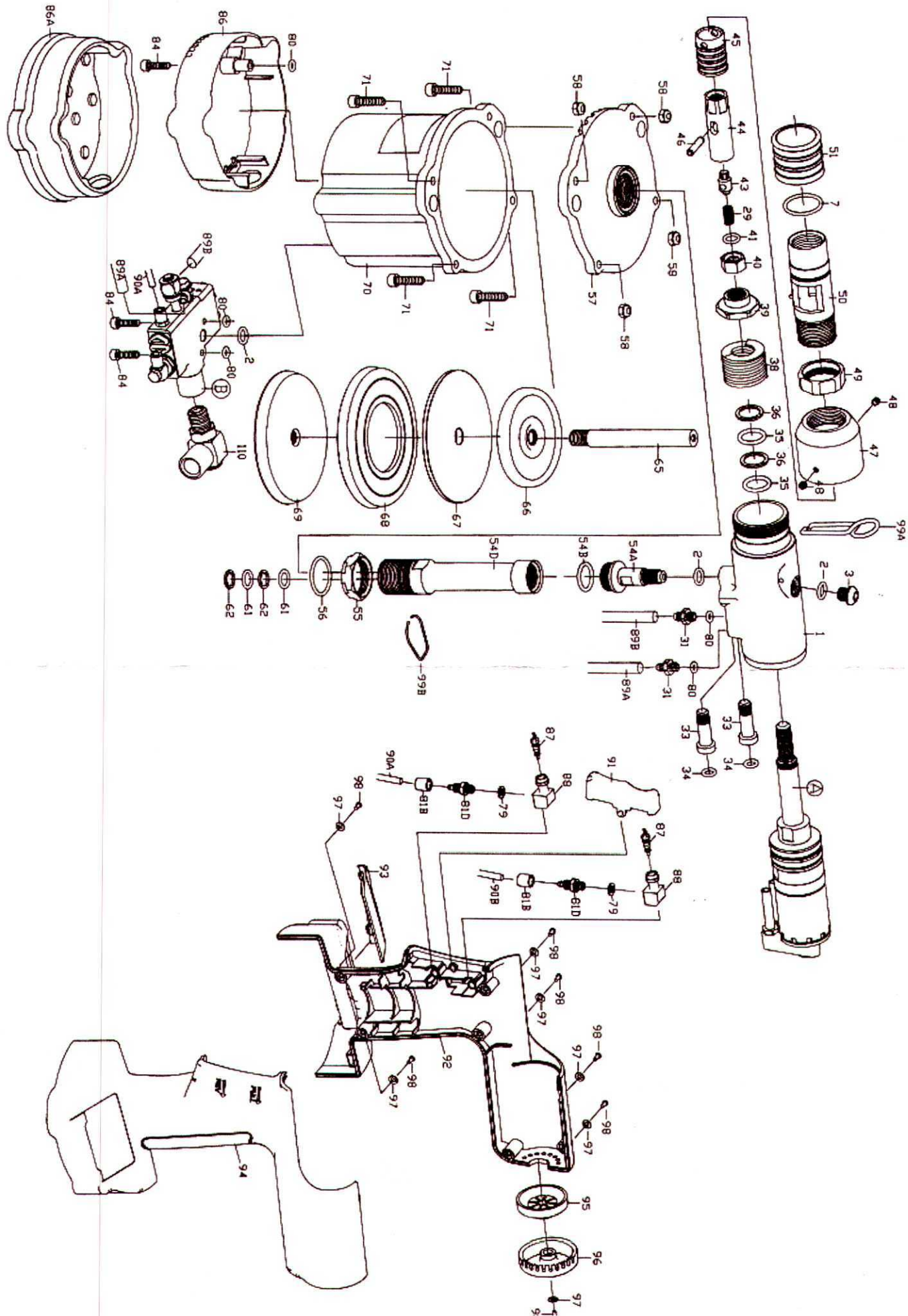
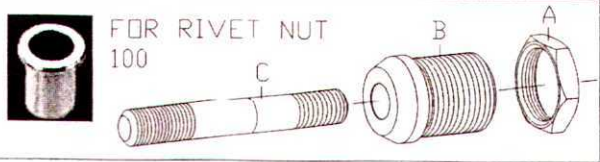
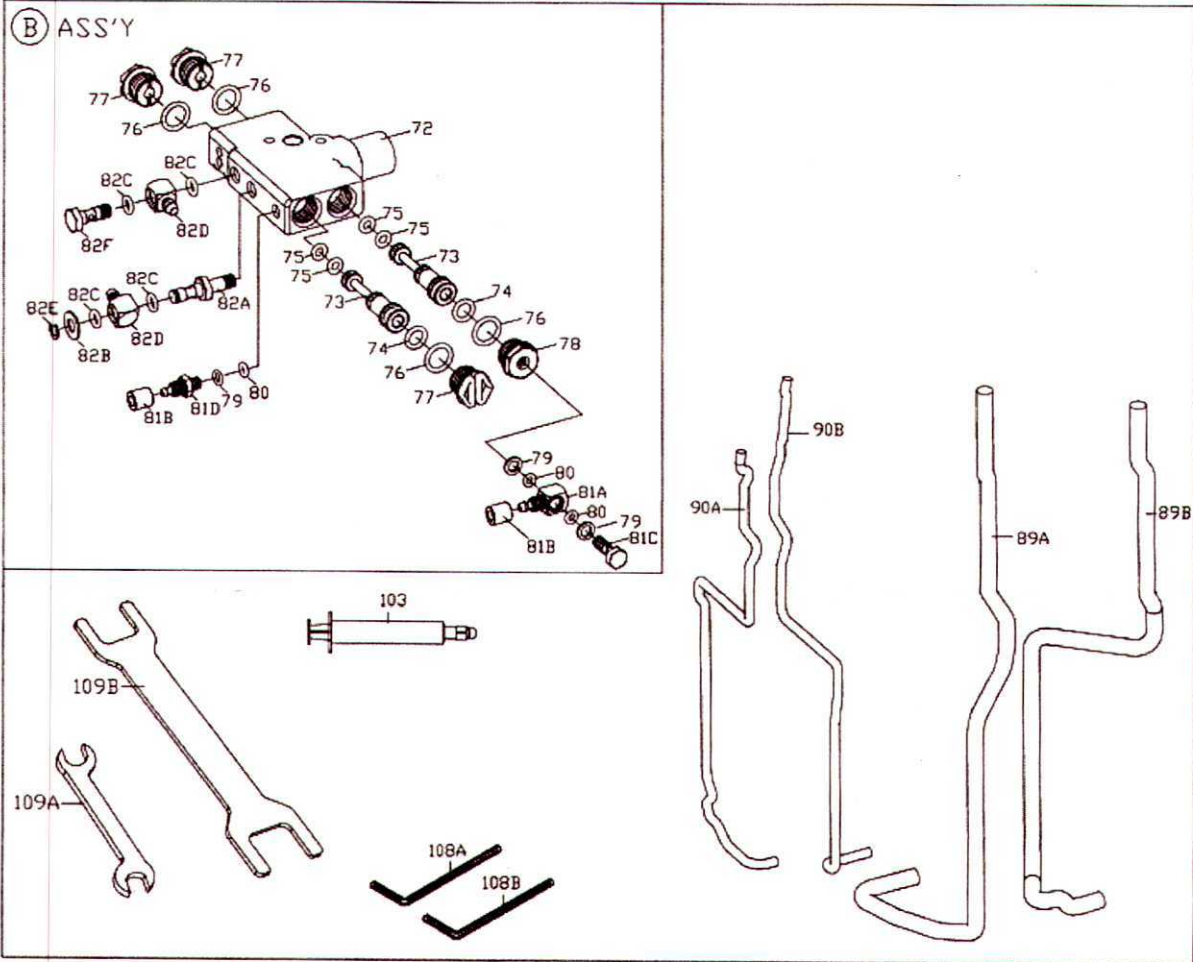
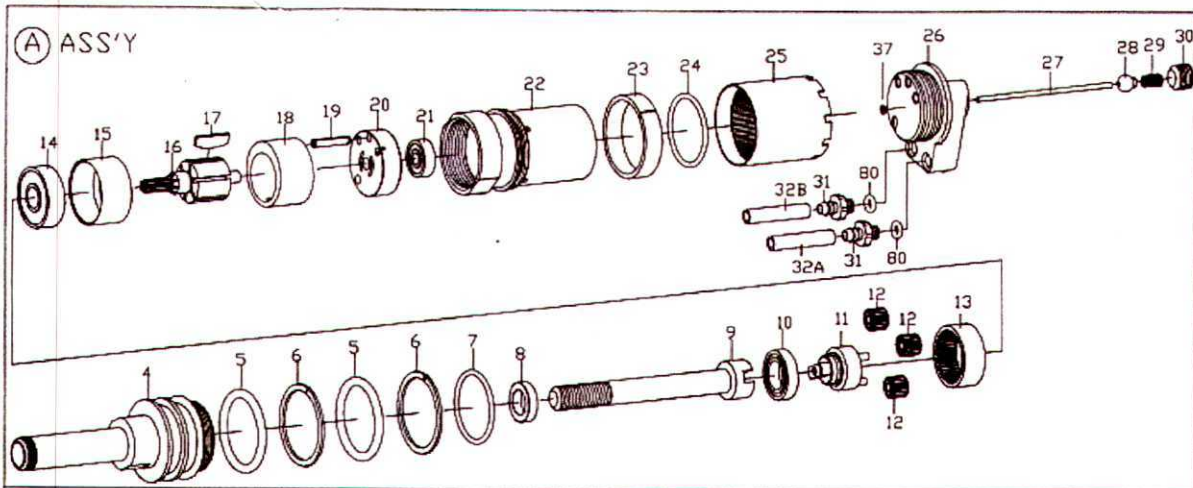


# ZRN2508E Air Hydraulic Rivet Nut Tool





**Inch**

100-5/16"-18	258N26	Rivet Nut Head Assembly(5/16"-18)
A	258106	Nut
B	258B15	Nut Anvil (5/16")
C	258A26	Bolt (5/16"-18)

100-3/8"-16	258N27	Rivet Nut Head Assembly(3/8"-16)
A	258106	Nut
B	258B27	Nut Anvil (3/8")
C	258A27	Bolt (3/8"-16)

100-1/2"-13	258N28	Rivet Nut Head Assembly(1/2"-13)
A	258106	Nut
B	258B28	Nut Anvil (1/2")
C	258A28	Bolt (1/2"-13)

# ZRN2508E Air Hydraulic Rivet Nut Tool

<b>TECHNICAL DATA</b>	Traction Power	lbf(kgf)	: 5500 (2500)
	Stroke Length	mm	8
	Net Weight	lbs(kgs)	: 5.4(2.4)
	Blind Rivet Nut Setting Capacity		: 5/16"-18~1/2"-13 all materials

## PARTS LIST

Index	Part #	Description	Index	Part #	Description
1.	258101R	Hydraulic Section	56.	OR2025	O-RING
2.	OR0812	O-RING(3)	57.	258401R	Upper Cover
3.	HR00812508	Set Screw	58.	NN005080B	Nut (4)
4.	258301	Hydraulic Plunger	61.	OR1217	O-RING (2)
5.	OR2936	O-RING (2)	62.	BR1217	Back-Up Ring (2)
6.	BR3036	Back-Up Ring (2)	65.	258501	Plunger Rod
7.	OR2225	O-RING (2)	66.	202505	Bumper Ring
8.	258302	Washer	67.	107503	Front Head Disc
9.	258303	Shaft	68.	819502	Packing Ring
10.	B26801	Ball Bearing	69.	107502	Lower Plate
11.	2583G3	Gear Spindel	70.	258403R	Air Cylinder Body
12.	2583G2	Gear (3)	71.	HC00508020	Set Screw (4)
13.	2583G1	Ring Gear	72.	258201	Valve Case
14.	B20629	Ball Bearing	73.	919202A	Valve Stem (2)
15.	2583M3	Front End Plate	74.	OR0711	O-RING (2)
16.	2583M4	Rotor	75.	OR0408	O-RING (4)
17.	2583M5	Rotor Blade (6)	76.	OR1014	O-RING (4)
18.	2583M1	Cylinder	77.	107409	Inlet Plug (3)
19.	RP3030	PIN	78.	258409	Inlet Plug
20.	2583M2	Rear End Plate	79.	612714	Washer (5)
21.	B20625	Ball Bearing	80.	OR0306	O-RING (10)
22.	2583M6	Motor Cage	81A.	612712	Swivel
23.	2583M7	Seal	81B.	612711	Cap (4)
24.	OR2832	O-RING	81C.	612713	Socket
25.	2583M8	Muffler Cap	81D.	612717	Socket (3)
26.	2583V1	Motor Valve Body	82A.	166715	Socket
27.	2583V5	PIN	82B.	PW0613	Washer
28.	2583V4	Ball Valve	82C.	OR0509	O-RING (4)
29.	318603	SPRING (2)	82D.	166702	Swivel (2)
30.	HS01802808	Set Screw	82E.	ES0511	Snap Ring
31.	258717	Hose Connector (4x6) (4)	82F.	166705	Socket
32A.	258702A	4x6 PUHose(Reverse)-Orange	84.	HC00407016	Set Screw (3)
32B.	258702B	4x6 PUHose(Forward)-Black	86.	258402	Base
33.	2583V3	Air Inlet Hose (2)	86A.	922404	Rubber Boot
34.	OR0610	O-RING (2)	87.	107601	Bleeding Valve (2)
35.	OR1419	O-RING (2)	88.	107602	Valve Body (2)
36.	BR1419	Back-Up Ring (2)	89A.	258703A	4x6 PUHose(Reverse)-Orange
37.	OR0205	O-RING	89B.	258703B	4x6 PUHose(Forward)-Black
38.	258309	SPRING	90A.	258704A	2.5x4 PUHose(Reverse)-Orange
39.	258304	Nut	90B.	258704B	2.5x4 PUHose(Forward)-Black
40.	258310	Nut	91.	258601R	Trigger
41.	OR0913	O-RING	92.	258107R	Plastic Grip-Right
43.	258307	Hexagon Bit	93.	258107C	Battery Cap
44.	258306	Bolt Bushing	94.	258107L	Plastic Grip-Left
45.	258308	Adjustable Bushing	95.	919903	Muffler Cap Holder
46.	SP4018	SPRING	96.	919906	Muffler Cap
47.	258102	Front Cap Nut	97.	PW0306	Washer (7)
48.	HS00407004	Set Screw (2)	98.	ST0310	Screw (7)
49.	258104	Nut	99A.	258801	Hanger
50.	258103	Front Cap	99B.	258802	hose bind
51.	258105	Protection Sleeve	103.	922901	Oiler
54A.	2581082	Hydraulic Tube Connector-B	108A.	314755	5mm Hex. Wrench
54B.	OR1417	O-RING	108B.	314934	2mm Hex. Wrench
54D.	2581081	Hydraulic Tube Connector-A	109A.	144903	10X11 Wrench
55.	918106	Nut	109B.	258927	27X30 Wrench
			110.	92L2	Air Inlet Assembly