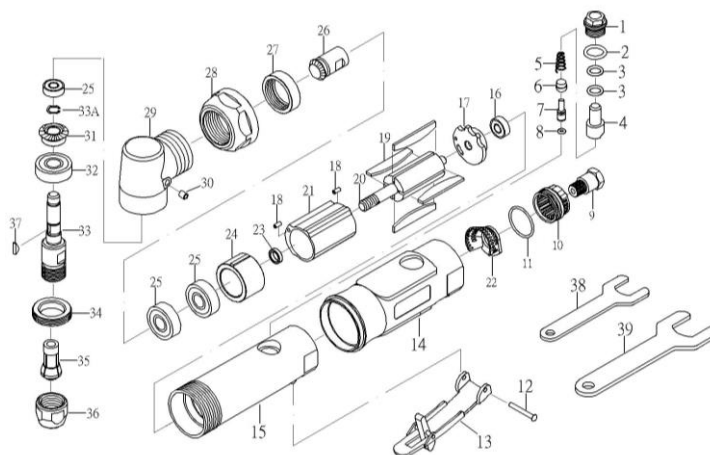


ZP319 Air Angle Die Grinder



TECHNICAL DATA

Collet Size	inch(mm)	: 1/4(6)
Net Weight	lbs(kgs)	: 1.5(0.7)
Length.	in (mm)	: 7(178)
RPM	RPM	: 18000
Air Inlet Size	inch-NPT/PT	: 1/4
Min. Hose Size	inch(mm)	: 3/8(10)
Avg. Air Consumption	cfm	: 3.7

PARTS LIST

Index #	Part #	Description	Q'ty	Index #	Part #	Description	Q'ty
1	ZP319-1	SCREW	1	21	ZP319-21	CYLINDER	1
2	ZP319-2	O-RING(P12)	1	22	ZP319-22	CONE MUFFLER	1
3	ZP319-3	O-RING(P8)(2)	2	23	ZP319-23	BEARING SPACER	1
4	ZP319-4	AIR REGULATOR	1	24	ZP319-24	FRONT PLATE	1
5	ZP319-5	SPRING	1	25	ZP319-25	BEARING(608ZZ)(3)	3
6	ZP319-6	VALVE STEM BUSHING	1	26	ZP319-26	BEVEL GEAR(18T)	1
7	ZP319-7	VALVE STEM	1	27	ZP319-27	NUT	1
8	ZP319-8	O-RING(3.5*1.4)	1	28	ZP319-28	CLAMP NUT	1
9	ZP319-9	AIR INLET	1	29	ZP319-29	ANGLE HOUSING	1
10	ZP319-10	EXHAUST SLEEVE	1	30	ZP319-30	OIL CUP	1
11	ZP319-11	O-RING(26.7*1.78)	1	31	ZP319-31	BEVEL GEAR(20T)	1
12	ZP319-12	SPRING PIN	1	32	ZP319-32	BEARING(6000ZZ)	1
13	ZP319-13	LEVER	1	33	ZP319-33	SHAFT	1
14	ZP319-14	PROTECTING RUBBER	1	33A	ZP319-33A	SNAP RING	1
15	ZP319-15	HOUSING	1	34	ZP319-34	CLAMP NUT	1
16	ZP319-16	BEARING(696ZZ)	1	35	ZP319-35	COLLET	1
17	ZP319-17	REAR PLATE	1	36	ZP319-36	COLLET NUT	1
18	ZP319-18	PIN(2)	2	37	ZP319-37	KEY	1
19	ZP319-19	ROTOR BLADE(4)	4	38	ZP319-38	STOP SPANNER 14MM	1
20	ZP319-20	ROTOR	1	39	ZP319-39	STOP SPANNER 19MM	1

DATE : 2015.03.04