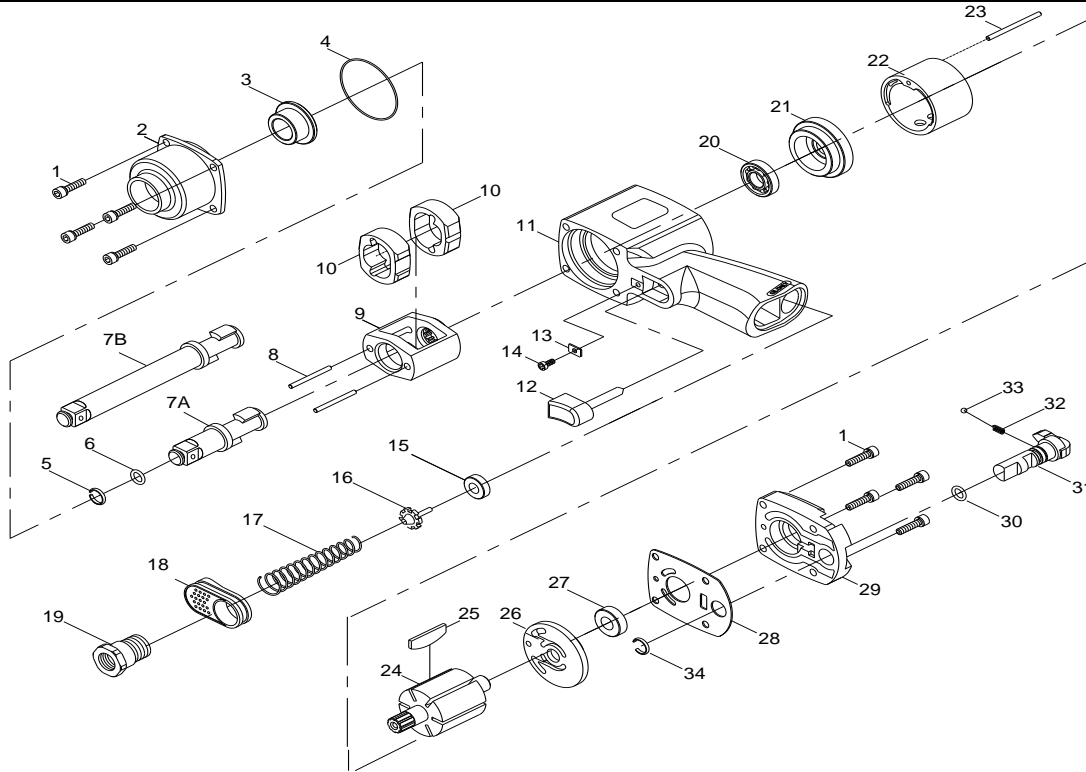


ZIW685 (L) - 3/4" LIGHT WEIGHT IMPACT WRENCH



TECHNICAL DATA

Square drive	inch(mm)	3/4(inch -mm)
Std. Bolt size	mm	36
Free Speed	R.P.M	6000
Max. Torque	ft-lb(NM)	1100(1491)
Avg. Air Cons.	Cfm(l/min)	12(340)
Net Weight	lbs(kgs)	4.15(9.13)
Air Inlet Size	inch-NPT/PT	1/4 (NPT/PT)
Min. Hose Size	mm	10

PARTS LIST

Index #	Part #	Description	Q'ty	Index #	Part #	Description	Q'ty
1	ZIW685-01	SCREW	8	18	ZIW685-18	EXHAUST DEFLECTOR	1
2	ZIW685-02	HAMMER HOUSING	1	19	ZIW685-19	INLET BUSHING	1
3	ZIW685-03	ANVIL BUSHING	1	20	ZIW685-20	BALL REARING	1
*4	ZIW685-04	O-RING	1	21	ZIW685-21	FRONT PLATE	1
*5	ZIW685-05	SOCKET RETAINER	1	22	ZIW685-22	CYLINDER	1
*6	ZIW685-06	RETAINER O-RING	1	23	ZIW685-23	CYLINDER PIN	1
7	ZIW685-07	STANDARD ANVIL	1	24	ZIW685-24	ROTOR	1
	ZIW685L-01	EXTENDED ANVIL 3/4"	1	*25	ZIW685-25	ROTOR BLADE	6
8	ZIW685-08	HAMMER PIN	2	26	ZIW685-26	REAR PLATE	1
9	ZIW685-09	HAMMER CAGE	1	27	ZIW685-27	BALL BEARING	1
10	ZIW685-10	HAMMER DOG	2	*28	ZIW685-28	GASKET	1
11	ZIW685-11	MOTOR HOUSING	1	29	ZIW685-29	HOUSING CAP	1
12	ZIW685-12	TRIGGER	1	*30	ZIW685-30	O-RING	1
13	ZIW685-13	TRIGGER RETAINER	1	31	ZIW685-31	REVERSE VALVE	1
14	ZIW685-14	SCREW	1	32	ZIW685-32	SPRING	1
*15	ZIW685-15	THROTTLE BUSHING	1	33	ZIW685-33	STEEL BALL	1
*16	ZIW685-16	VALVE STEM	1	*34	ZIW685-34	RETAINER	1
17	ZIW685-17	SPRING	1				

*FOR FREQUENCY REPLACEMENT PARTS

DATE : 1/27/2015