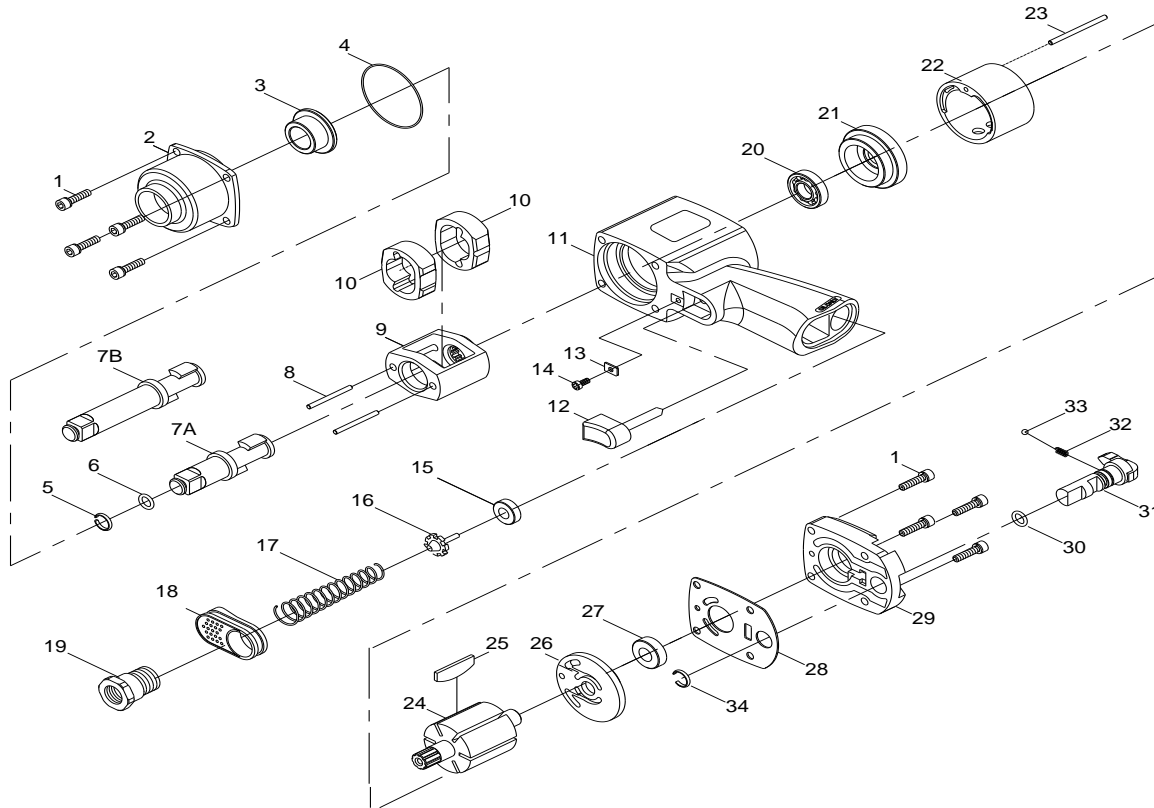


ZIW480 (L) 1/2" HEAVY DUTY IMPACT WRENCH



TECHNICAL DATA

Square drive inch(mm)	1/2(12.7)
Std. Bolt size inch(mm)	1-1/16(27)
Free Speed R.P.M	7500
Max. Torque ft-lb(NM)	800(1085)
Avg. Air Cons.	7.42(210)
Net Weight lbs(kgs)	5.5(2.5)
Air Inlet Size inch-	1/4 (inch - NPT/PT)
Min. Hose Size inch(3/8(10)

PARTS LIST

Index #	Part #	Description	Q'ty	Index #	Part #	Description	Q'ty
1	ZIW480-	SCREW	8	18	ZIW480-18	EXHAUST DEFLECTOR	1
2	ZIW480-	HAMMER HOUSING	1	19	ZIW480-19	INLET BUSHING	1
3	ZIW480-	ANVIL BUSHING	1	20	ZIW480-20	BALL REARING	1
*4	ZIW480-	O-RING	1	21	ZIW480-21	FRONT PLATE	1
*5	ZIW480-	SOCKET RETAINER	1	22	ZIW480-22	CYLINDER	1
*6	ZIW480-	RETAINER O-RING	1	23	ZIW480-23	CYLINDER PIN	1
7	ZIW480-	STANDARD ANVIL	1	24	ZIW480-24	ROTOR	1
	ZIW480L-	EXTENDED ANVIL 1/2"	1	*25	ZIW480-25	ROTOR BLADE	6
8	ZIW480-	HAMMER PIN	2	26	ZIW480-26	REAR PLATE	1
9	ZIW480-	HAMMER CAGE	1	27	ZIW480-27	BALL BEARING	1
10	ZIW480-	HAMMER DOG	2	*28	ZIW480-28	GASKET	1
11	ZIW480-	MOTOR HOUSING	1	29	ZIW480-29	HOUSING CAP	1
12	ZIW480-	TRIGGER	1	*30	ZIW480-30	O-RING	1
13	ZIW480-	TRIGGER RETAINER	1	31	ZIW480-31	REVERSE VALVE	1
14	ZIW480-	SCREW	1	32	ZIW480-32	SPRING	1
*15	ZIW480-	THROTTLE BUSHING	1	33	ZIW480-33	STEEL BALL	1
*16	ZIW480-	VALVE STEM	1	*34	ZIW480-34	RETAINER	1
17	ZIW480-	SPRING	1				

*FOR FREQUENCY REPLACEMENT PARTS

DATE : 01/27/2015