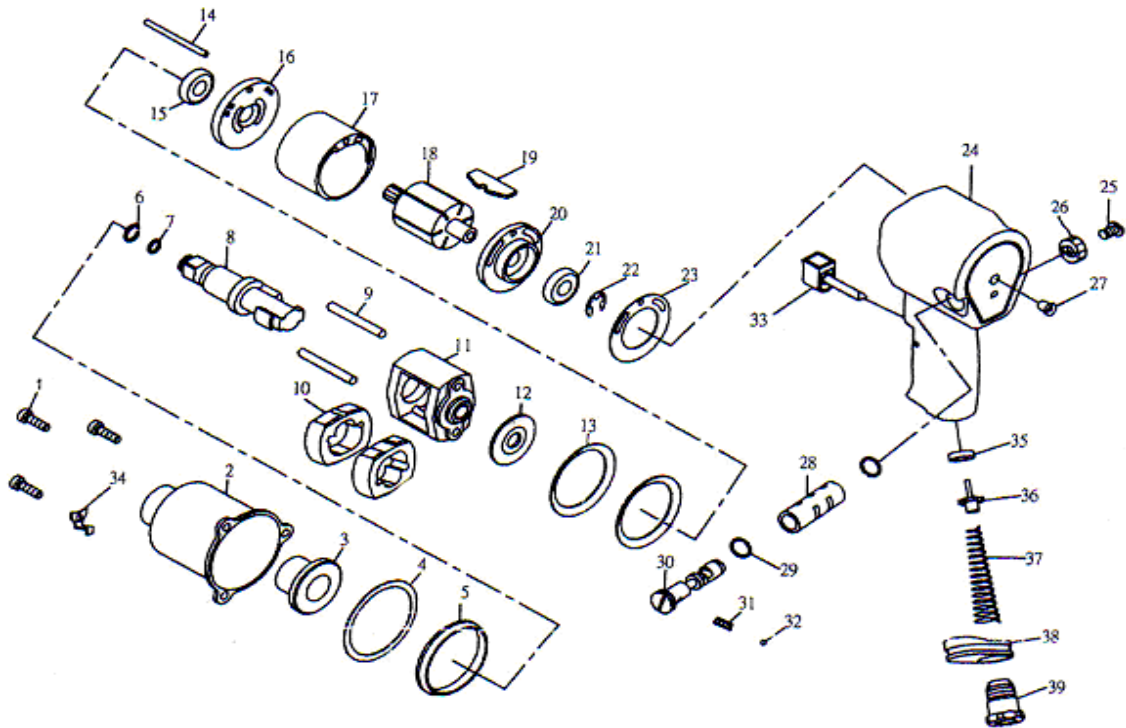


# ZIW465R - 1/2" Heavy Duty Impact Wrench



## TECHNICAL DATA

Square Drive inch	1/2
Std. Bolt Size inch (mm)	3/4(19)
Free Speed R.P.M	7,000
Max. Torque ft-lb(N.M)	650(880)
Air Inlet PT	1/4
Min. Air Hose I.D	3/8
Avg. Air Consumption cfm	7(200)
Net Weight lbs (kgs)	5.7 (2.6)

## PARTS LIST

Index #	Part #	Description	Q'ty	Index #	Part #	Description	Q'ty
1	ZIW465R-	Screw (3)	3	21	ZIW465R-21	Ball Bearing	1
2	ZIW465R-	Clutch Housing	1	*22	ZIW465R-22	E-Ring	1
3	ZIW465R-	Anvil Bushing	1	*23	ZIW465R-23	End Plate Gasket	1
*4	ZIW465R-	Front Gasket	1	24	ZIW465R-24	Motor Housing	1
5	ZIW465R-	Clutch Housing Pilot	1	25	ZIW465R-25	Screw	1
*6	ZIW465R-	Anvil Collar	1	26	ZIW465R-26	Reverse Valve	1
*7	ZIW465R-	O-Ring	1	27	ZIW465R-27	Grease Fitting	1
8	ZIW465R-	Anvil	1	28	ZIW465R-28	Valve Sleeve	1
9	ZIW465R-	Hammer Pin (2)	2	*29	ZIW465R-29	O-Ring (2)	2
10	ZIW465R-	Hammer Dog (2)	2	30	ZIW465R-30	Reverse Valve	1
11	ZIW465R-	Hammer Cage	1	31	ZIW465R-31	Spring	1
12	ZIW465R-	Hammer Washer	1	32	ZIW465R-32	Steel Ball	1
13	ZIW465R-	Disc Spring (2)	2	33	ZIW465R-33	Trigger	1
14	ZIW465R-	Cylinder Pin	1	34	ZIW465R-34	Trigger Fixture	1
15	ZIW465R-	Ball Bearing	1	*35	ZIW465R-35	Throttle Bushing	1
16	ZIW465R-	Front End Plate	1	*36	ZIW465R-36	Valve Stem	1
17	ZIW465R-	Cylinder	1	37	ZIW465R-37	Spring	1
18	ZIW465R-	Rotor	1	38	ZIW465R-38	Muffle Cover	1
19*	ZIW465R-	Rotor Blade (6)	6	39	ZIW465R-39	Hose Fitting	1
20	ZIW465R-	Rear End Plate	1				

\*FOR FREQUENCY REPLACEMENT PARTS

DATE : 12/01/2014