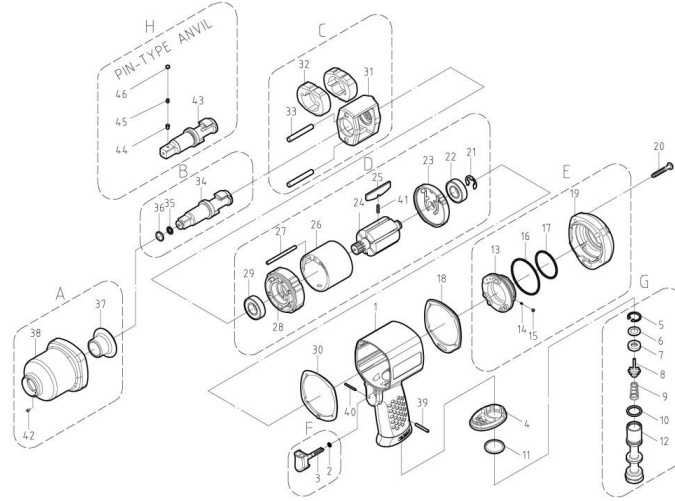


ZIW1063CT 1/2" COMPOSITE AIR IMPACT WRENCH



TECHNICAL DATA

Square Drive	inch(mm)	:	1/2"(12.7)
Free Speed	R.P.M.	:	8500
Max. Torque(15 secs)	ft-lb(NM)	:	820(1100)
Working torque(5 secs)	ft-lb(NM)	:	650(880)
Avg. Air Cons.	cfm(l/min)	:	4.9(139)
Net Weight	lbs(kgs)	:	4.8(2.2)
Impact mechanism		:	Twin Hammer

PARTS LIST

Index #	Part #	Description	Q'ty	Index #	Part #	Description	Q'ty
1	ZIW1063CT-1	Housing	1	25	ZIW1063CT-25	Blade(7)	7
2	ZIW1063CT-2	O-Ring	1	26	ZIW1063CT-26	Cylinder	1
3	ZIW1063CT-3	Trigger	1	27	ZIW1063CT-27	Spring Pin	1
4	ZIW1063CT-4	Exhaust Deflector	1	28	ZIW1063CT-28	Front Plate	1
5	ZIW1063CT-5	Retaining Ring	1	29	ZIW1063CT-29	Ball Bearing	1
6	ZIW1063CT-6	Washer	1	30	ZIW1063CT-30	Packing	1
7	ZIW1063CT-7	Oil Seal	1	31	ZIW1063CT-31	Hammer Cage	1
8	ZIW1063CT-8	Pin Valve Rod	1	32	ZIW1063CT-32	Hammer(2)	2
9	ZIW1063CT-9	Cone Spring	1	33	ZIW1063CT-33	Hammer Pin(2)	2
10	ZIW1063CT-10	O-Ring	1	34	ZIW1063CT-34	Anvil	1
11	ZIW1063CT-11	Washer	1	35	ZIW1063CT-35	O-Ring	1
12	ZIW1063CT-12	Air Inlet(1/4"-18NPT)	1	36	ZIW1063CT-36	Anvil Collar	1
13	ZIW1063CT-13	Reverse Lever	1	37	ZIW1063CT-37	Bushing	1
14	ZIW1063CT-14	Spring	1	38	ZIW1063CT-38	Front Casing	1
15	ZIW1063CT-15	Steel Ball	1	39	ZIW1063CT-39	Spring Pin	1
16	ZIW1063CT-16	O-Ring	1	40	ZIW1063CT-40	Spring Pin	1
17	ZIW1063CT-17	O-Ring	1	41	ZIW1063CT-41	Spring(7)	7
18	ZIW1063CT-18	Packing	1	42	ZIW1063CT-42	Oil Drop	1
19	ZIW1063CT-19	Cover	1	PIN-TYPE ANVIL			
20	ZIW1063CT-20	Screw(4)	4	43	ZIW1063CT-43	Anvil	1
21	ZIW1063CT-21	E-Ring	1	44	ZIW1063CT-44	Lock Pin	1
22	ZIW1063CT-22	Ball Bearing	1	45	ZIW1063CT-45	Spring	1
23	ZIW1063CT-23	Rear Plate	1	46	ZIW1063CT-46	Pin	1
24	ZIW1063CT-24	Rotor	1				

DATE : 2015.03.04