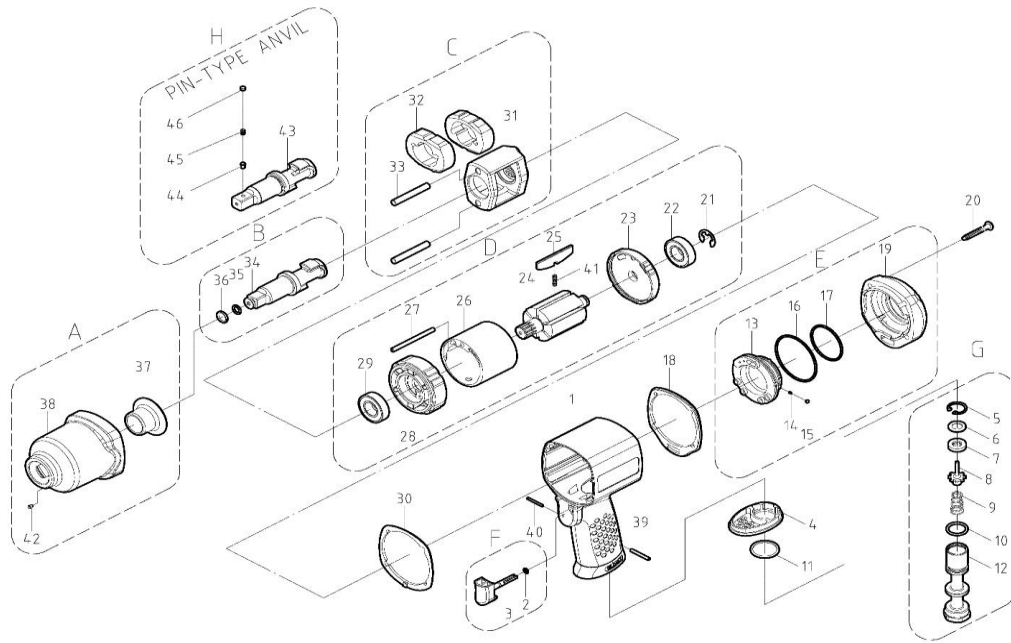


ZIW1015C 1/2" Composite Air Impact Wrench



TECHNICAL DATA

Square drive	inch(mm)	:1/2"
Free speed	R.P.M	:8500
Max. torque (15sec.)	ft-lb	:820
Working torque (5sec.)	ft-lb	:650
Air inlet size	inch-NPT/PT Hose	:1/4"
	size inch(mm)	:3/8(10)
Avg. air consumption	cfm(scfm)	:4.9 (35)
Net weight	lbs(kgs)	:4.6/2.1

PARTS LIST

Index #	Part #	Description	Q'ty	Index #	Part #	Description	Q'ty
1	ZIW1015C-01	Housing	1	24	ZIW1015C-24	Rotor	1
2	ZIW1015C-02	O-Ring	1	25	ZIW1015C-25	Blade	7
3	ZIW1015C-03	Trigger	1	26	ZIW1015C-26	Cylinder	1
4	ZIW1015C-04	Exhaust Deflector	1	27	ZIW1015C-27	Spring Pin	1
5	ZIW1015C-05	Retaining Ring	1	28	ZIW1015C-28	Front Plate	1
6	ZIW1015C-06	Washer	1	29	ZIW1015C-29	Ball Bearing	1
7	ZIW1015C-07	Oil Seal	1	30	ZIW1015C-30	Packing	1
8	ZIW1015C-08	Pin Valve Rod	1	31	ZIW1015C-31	Hammer Cage	1
9	ZIW1015C-09	Cone Spring	1	32	ZIW1015C-32	Hammer	2
10	ZIW1015C-10	O-Ring	1	33	ZIW1015C-33	Hammer Pin	2
11	ZIW1015C-11	Washer	1	34	ZIW1015C-34	Anvil	1
12	ZIW1015C-12	Air Inlet	1	35	ZIW1015C-35	O-Ring	1
13	ZIW1015C-13	Reverse Lever	1	36	ZIW1015C-36	Anvil Collar	1
14	ZIW1015C-14	Spring	1	37	ZIW1015C-37	Bushing	1
15	ZIW1015C-15	Steel Ball	1	38	ZIW1015C-38	Front Casing	1
16	ZIW1015C-16	O-Ring	1	39	ZIW1015C-39	Spring Pin	1
17	ZIW1015C-17	O-Ring	1	40	ZIW1015C-40	Spring Pin	1
18	ZIW1015C-18	Packing	1	41	ZIW1015C-41	Spring	7
19	ZIW1015C-19	Cover	1	42	ZIW1015C-42	Oil Drop	1
20	ZIW1015C-20	Screw	4	43	ZIW1015C-43	Anvil	1
21	ZIW1015C-21	E-Ring	1	44	ZIW1015C-44	Lock Pin	1
22	ZIW1015C-22	Ball Bearing	1	45	ZIW1015C-45	Spring	1
23	ZIW1015C-23	Rear Plate	1	46	ZIW1015C-46	Pin	1

DATE : 2015.03.03