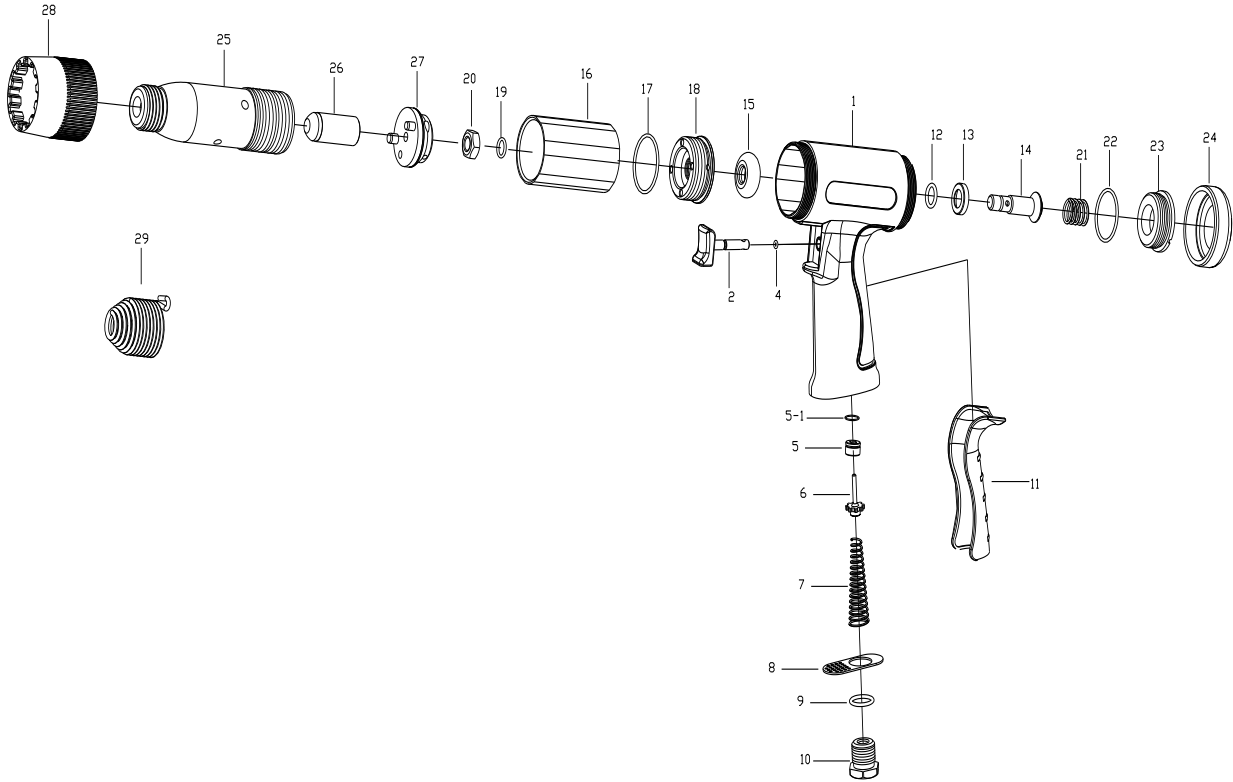


# ZCH-394B Shock Reduction Air Hammer



## TECHNICAL DATA

Chisel Shank Opening inch(mm)	0.401 ( 10.2 )
Bore Diameter inch(mm)	3/4" ( 19 )
Stroke Length inch(mm)	3-1/2(89)
Operating Air Pressure PSI(bar)	6.2(90)
Blows per Minute @ 90 Psig B.P.M	2,100
Avg. Air Consumption @ 90 Psig cfm(1/min)	6(170)
Tool Weight lbs(kgs)	4.6(2.1)
Min. Hose Size inch(mm)	3/8(10)
Air Inlet Size inch-NPT/PT	1/4" NPTF
Vibration m/s <sup>2</sup>	5.3

## PARTS LIST

Index #	Part #	Description	Q'ty	Index #	Part #	Description	Q'ty
1	393111B	Handle	1	16	193415	Inner Housing	1
2	293611	Valve Button	1	17	OR3741	O-Ring	1
*4.	OR0407	O-Ring	1	18	193416	Head-Inner Housing	1
*5.	293222	Value Seat	1	19	OR1014	O-Ring	1
*5-1.	OR1315	O-Ring	1	20	HN1013	Lock Nut	1
6	293203	Actuating Value Asss'y	1	21	315608	Spring	1
7	293204	Spring	1	22	OR3034	O-Ring	1
8	442207	Diffusion Plate	1	23	293104	End Cap	1
9	OR1621	O-Ring	1	24	293103	Rubber Cap	1
10	280221	Air Inlet Bushing (18T)	1	25	194401 - B	Cylinder	1
11	393102	Handle Sleeve	1	26	194402	Piston	1
*12	OR1217	O-Ring	1	27	193300	Valve Ass'y	1
13	193429	Value Seat	1	28	194403	Exhaust Deflector	1
14	193418	Air Inlet Tube	1	29	192913	Retainer Spring	1
15	193426	Bumper	1				

**\*FOR FREQUENCY REPLACEMENT PARTS**

DATE : 12/01/2014