

The  
**CIRCULAR**

VOLUME V



**THE SEDGEMOOR COLLECTION  
OF TOWER MINT SHILLINGS**

Group iii  
2194 Oval garnished shield with C R divided by plume above. R  
Harp.  
Similar to No. 2193 but C R divided by plume. R

2195 Third horseman. Round garnished shield with C R above. R  
No plume on reverse. Bell, crown, tun, anchor, triangle, star R  
(very rarely star in circle).

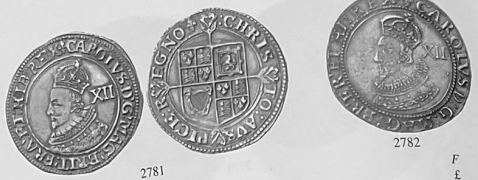
2196 Plume above shield. Portcullis, crown, tun.  
2197 Briot horseman with groundline. Lozenge stops on  
Triangle-in-circle.

Group iv  
2198 Fourth horseman. Reverse as Group iii  
(P), (R), eye, sun.

Group v  
2199 Fifth horseman. Reverse as Group iii

Halfcrowns  
Group i  
2200 First horseman. Reverse as Group iii

CHARLES I



- 2781 Shilling Group A, first bust, type 1, in coronation robes, bust 1, high double-arched crown, both arches jewelled. R. Square-topped shield over cross fourchee (Sharp A1/1); mm. lis\*. 95 475
- 2782 — bust 2, larger crown, outer arch only jewelled (Sharp A2/1-2); mm. lis\*, cross calvary\*. 90 450
- 2783 — 1b1. R. Plume above shield, no cross fourchee (Sharp A2/3); mm. lis, cross calvary\*. 850 3500
- 2784 Group B, second bust, type 1a, in ruff, armour and mantle. R. Square-topped shield over cross fourchee (Sharp B1-5/1); mm. cross calvary\*, negro's head, castle. 90 425
- 2785 — 1b2. R. Plume above shield, no cross fourchee (Sharp B1-5/2); mm. castle. 200 800
- 2786 — 1b3. R. Plume above shield, cross fourchee (Sharp B2/3); mm. negro's head. 1750 5750
- 2787 Group C, third bust, type 2a, with more visible armour. R. Oval garnished shield with CR above (Sharp C1/1, C2/1-3); mm. plume, rose. 75 325
- 2788 — 2b. R. Plume above shield (Sharp C1/4, C2/4-6, C3/5); mm. plume, rose. 175 750
- 2789 Group D, fourth bust, type 3.1, with falling lace collar, inner circles. R. Garnished oval shield with CR at sides (Sharp D1-6/1); mm. harp, portcullis. 70 300
- 2790 — 3.2. R. Plume above shield (Sharp D1-3/2); mm. harp. 750 2750



- 2791 — 3a. no inner circles. R. Round garnished shield, no CR (Sharp E1/1-2, E2/1-2, E3/2); mm. bell, crown, tun. 50 200
- 2792 — rare bust varieties, no inner circles: (a) large crude bust (Sharp E4/2); mm. tun; (b) neat 'Aberystwyth' bust (Sharp E5/2); mm. tun. 60 250
- 2793 — 3b. R. Plume above shield (Sharp E1-2/3); mm. bell, crown, tun. 90 450

\* Light weight shillings (81.75 grains) exist of No. 2782, mm. lis, cross calvary over lis; No. 2784, mm. cross calvary; and No. 2785 mm. cross calvary  
See Sharp BNI 1977 for shilling bust varieties including fine work coins. See also Holt, Hulet and Lyle, BNI 2014.

CHARLES I



- 2794 Group E, fifth 'Aberystwyth' bust, type 4.2, double-arched crown, small or large XII. R. Square-topped shield over cross moline (Sharp E1/1-2); mm. harp, anchor. 70 300
- 2795 — 4.1, larger bust, single-arched crown, small or large XII. 70 300
- 2796 — 4.3, smaller bust, single-arched crown, large XII. 70 300
- 2797 — 4.1 var., larger bust with rounded shoulder, large XII. 70 300
- 2798 — mm. anchor, triangle. rare bust varieties: (a) small 'Aberystwyth' bust (Sharp F4/1); mm. anchor (to right); (b) stellate lace collar, single-arched crown (Sharp F4/2); mm. anchor (to left); (c) small 'Aberystwyth' bust, single-arched crown (Sharp F4/3); mm. anchor (to left).
- 2799 Group F, sixth large 'Briot's' bust, type 4.4, double-arched crown. R. Square-topped shield over cross fourchee. mm. triangle, star, triangle-in-circle. 70 300



- 2800 — (under Parliament). 4.4 var., (under Parliament). (Sharp G3/2); mm. harp, anchor. 70 300
- 2801 Group G, (under Parliament). R. Square-topped shield over cross fourchee. mm. harp, anchor. 70 300
- 2802 — 4.6, short sceptre. 70 300
- 2804 — short sceptre. 70 300

2210 CHARLES I  
Similar to No. 2209, with plume over shield. Portcullis, crown, tun.  
2211 Later horseman. King wears cloak flying from shoulder. Portcullis, the horse's head is turned towards the viewer. Tun, anchor, triangle, star, triangle-in-circle.  
Similar to No. 2211, with rough ground beneath horse. Portcullis, star (over triangle on obverse).  
Similar to No. 2211, but rough workmanship. (P), (R), eye, horseman. Reverse as Group iii. Star, triangle-in-circle.  
man. Reverse as Group iii. Sun, sceptre.  
d bust left with XII behind. AUSPICE REGNO. Shield.  
square shield.  
ross fourchee. Lis, cross calvary.  
ove shield. Lis, cross calvary.  
es lower edge of coin on later marks.

- 534 5.54 89.8 220° 1m. triangle. MAG BRI FRA ET HIB. Rev. 1. Sharp F5/1. Webb 1.427, ex North 311.  
534 5.73 88.4 180° 1m. triangle. MAG BRI FRA ET HIB. Rev. 2. Sharp F5/2. Ex Lockhart (Hawkins).  
535 5.89 90.8 170° 1m. triangle/triangle (over anchor, flukes to right), MAG BRIT FRA ET HIB. Rev. 2. Sharp F5/2. Ex Ashley.  
536 5.91 91.2 300° 1m. triangle. MAG BRIT FRA ET HIB. Rev. 2. Sharp F6/2. Ex M. Sharp.  
537 5.97 92.1 250° 1m. triangle. MAG BRIT FRA ET HIB. Rev. 2. Sharp F6/2. Ex M. Sharp.  
Bust 7. Similar to Bust 3, but with riveted armour (? recut die) (undifferentiated by North, Francis, or H. Carlyon-Britton (1949), p. 60, fig. 2. Ex M. Sharp.  
538 5.77 89.0 0° 1m. triangle-in-circle. MAG BRI FRA ET HIB. Rev. 2. Sharp F7/2. Ex M. Sharp.  
539 6.06 93.5 30° 1m. triangle-in-circle. MAG BRI FRA ET HIB. Rev. 2. Sharp F7/2. Ex M. Sharp.  
Carlyon-Britton (1949), p. 60, fig. 1. Same rev. die as no. 549. Ex North Group F).  
GROUP G (Sixth bust, by Briot. Reverses as Group F).  
Bust 1. Portrait with wide-spread double-arched crown, stellate lace collar (North 2231; Francis 4c; Hawkins 4\*).  
540 6.07 93.6 220° 1m. triangle/triangle (over anchor, flukes to right), MAG BRIT FRA ET HIB. Rev. 1. Sharp G1/1. Ex M. Sharp, ex Lingford.  
541 5.84 90.0 290° 1m. triangle/triangle (over anchor, flukes to right), MAG BRIT FRA ET HIB. Rev. 1. Sharp G1/1. Ex M. Sharp, ex Lingford.  
542 5.72 88.2 330° 1m. triangle/triangle (over anchor, flukes to right), MAG BRIT FRA ET HIB. Rev. 1. Sharp G1/1. Ex M. Sharp, ex Lingford.  
543 5.94 91.6 0° 1m. triangle. MAG BRIT FRA ET HIB. Rev. 1. Sharp G1/1. Ex M. Sharp, ex Lingford.

Glendining's LONDON

A.H. BALDWIN & SONS  
11 ADELPHI TERRACE LONDON W.C.2  
NUMISMATISTS TEL. 01

THE COLLECTION OF ENGLISH COINS  
formed by the late Bernard Roy Osborne  
Sold in conjunction with A. H. Baldwin & Sons, Ltd.

Tuesday 23 April 1991 at 1 pm



THE SEDGEMOOR COLLECTION  
of Tower Mint Shillings

The  
**CIRCULAR**

Volume V

Numismatics is a hobby full of traditions and one that in our opinion that is sorely missed, is that of the Numismatic Circular. I'm sure all of us familiar with the SNC or Seabys bulletin will all reminisce on "the good old days" where you would rush to order, once the postman hand delivered your copy.

With technical advances such as the internet perhaps this is partly why this fond tradition is now almost extinct. However we have decided to try to revive numismatic circulars with a modern twist. Over the coming months we will be offering a wide variety of material from roman silver up to modern gold sovereigns which we hope will cater for all tastes.

Our latest edition we are delighted to bring to market the SEDGEMOOR collection. of Tower Mint Shillings.

As always we hope you all find something of interest.



c o i n s



Charles I, (1625 - 49) ,Tower Mint under the King (1625 - 42) Shilling, Group A, mm. cross Calvary (over lis on obv.), bust 2, (S 2782; N.2216; Sharp A2/1; Brooker –)

*Bust marked, otherwise approaching very fine, the mint-mark very rare on a heavyweight coin; a combination not represented in the Ashley, Brooker, Hughes, Osborne or Shuttlewood collections.*

Provenance - Ex Dolphin Coins 2002 #1195, Ex Bob Lyall (28/02/2005) , Ex RL Collection

**£225**



Charles I, (1625 - 49) ,Tower Mint under the King (1625 - 42) Shilling. (Group B, type 1b2, mm. castle over negros head, bust 1, colon stops on obv., no stops on rev.(S 2784; N.2218; Sharp B1/1)

*The flan a little ragged however a clear and well defined portrait.*

Provenance - Ex Seabys 01/10/1980 £35, Ex Dr Hulett Collection

**£600**



Charles I (1625-1649), Tower mint under the King (1625 - 42), Shilling, Group B, type 1b2, mm. castle, bust 2, plume above shield (Sharp B2/2; SCBI Brooker 416; N 2220; S 2785).

*Deliberate X in front of the kings face (something many shillings from this period of Charles I reign seem to have. Possibly from a non royalist uprising?) otherwise rare*

**£600**



Charles I, (1625 - 49) ,Tower Mint under the King (1625 - 42) Shilling, Group C, type 2a, mm. plume, (S 2787; N.2221:Sharp C2/1)

*Good Fine, toned with a good pedigree. The reverse featuring the rarer early Irish style harp*

Provenance - Ex R.C. Lockett Collection, Glendinings October 1956 Part II, Ex Studio Coins 1999, Ex Morris Collection

**£310**



Charles I, (1625 - 49) ,Tower Mint under the King (1625 - 42) Shilling, Group D, type 3, mm. Harp, (S 2789: Sharp D4/1)

*A scarce variety with the legened reading HIB for this type. 1 of only 3 dies known. Marked in the obverse field otherwise pleasing.*

Provenance - Ex Morris Collection

**£115**



Charles I, (1625 - 49) ,Tower Mint under the King (1625 - 42) Shilling, Group E, type 3b, Plume over shield mm. Bell, (S 2793; Sharp E2/3)

*Good fine or better , rare*

Provenance - J. Cummings Ltd (10/94), Ex Alan Morris Collection, Ex Coins of Britain 05/11, Ex Morris Collection

**£440**



Charles I (1625-1649), Tower mint under the King (1625 - 42), Shilling, Group E, type 3A, mm. Bell (S.2785; Sharp E1/2).

*Full flan , very rare with this reverse*

Provenance - Ex Morris Collection

**£150**



Charles I, (1625 - 49) ,Tower Mint under the King (1625 - 42) Shilling, Group E, type 3a, mm. Bell, (S 2791: Sharp E2/2)

*Good Fine*

**£130**



Charles I, (1625 - 49) ,Tower Mint under the King (1625 - 42) Shilling, Group E, type 3, mm. Crown over Bell / Crown  
(S 2789: Sharp E1/2)

*Appears to be a find, fine reverse better, rare*

**Provenance - Ex Morris Collection**

**£145**



Charles I, (1625 - 49) ,Tower Mint under the King (1625 - 42) Shilling, Group E, type 4.2, mm. Tun,  
(S 2794; Sharp F1)

*Extremely rare with the large mark of value. Just 7 known*

**Provenance - PWoodard Collection**

**£155**



Charles I (1625-1649), Tower mint under the King (1625 - 42), Shilling, Group E, type 3A, mm. Tun  
(S.2792; Sharp E5/2).

*Rare bust variety, well toned.*

**Provenance - Ex A H Baldwins 1990, Ex B R Osborne Collection, Ex David Holt Collection, Ex Bob Lyall,  
Ex RL Collection, Ex M&H Coins 2014**

**£190**



Charles I, (1625 - 49) ,Tower Mint under the King (1625 - 42) Shilling, Group d, type 3a, mm. Tun (S 2791: Sharp E3/2)

*Struck on a large flan, retoned however an attractive example from this famous Hoard*

**Provenance - Ex Middleham Hoard, Ex Essex Coins**

**£245**



Charles I, (1625 - 49) ,Tower Mint under the King (1625 - 42) Shilling, Group D, type 3a, mm. Tun  
(S 2792: Sharp E4/2)

*Rare bust variety, fresh hoard surfaces with sharp details.*

**Provenance - Ex Beadale Hoard**

**£180**



Charles I, (1625 - 49) ,Tower Mint under the King (1625 - 42) Shilling, Group E, type 4.3, mm. Anchor/ Anchor over Tun,  
(S 2796: Sharp F3/1)

*Characterful shaped flan, welltoned, with a very clear over mark on the reverse*

**Provenance - Ex Dr Hulett, Ex M&H Coins**

**£195**



Charles I (1625-1649), Tower mint under the King (1625 - 42), Shilling, Group E, type 4.3, mm. Anchor  
(S.2796; Sharp F3/1).

*Good Very fine, well toned with a strong eye appeal.*

**Provenance - KB COINS, bought York Coin Fair 07/2005**

**£395**



Charles I, (1625 - 49) ,Tower Mint under the King (1625 - 42) Shilling, Group E, type 4var, mm.Anchor (S 2797: Sharp F5/1)

*Rare legend reading with just M for MAG. Very fine*

Provenance - Ex L. Bennett 22/10/2006, Ex St James's Auctions 2010, lot 154, Morris Collection

**£425**



Charles I, (1625 - 49) ,Tower Mint under the King (1625 - 42) Shilling, Group E type 4. I, mm.Anchor (S 2792: Sharp F5/2)

*A neat and handsome coin, well toned with a good portrait.*

**£225**



Charles I, (1625 - 49) ,Tower Mint under the King (1625 - 42) Shilling, Group E, type 4. Ivar, mm.Triangle/ Triangle over Anchor (S 2796: Sharp F5/1)

*Very fine*

Provenance - Ex Morris Collection

**£225**



Charles I (1625-1649), Tower mint under the King (1625 - 42), Shilling, Group E, type 4. Ivar, mm.Triangle over Anchor/Triangle (S.2796; Sharp F5/2).

*Superb portrait and a very clear overmark.Rare with R over B in FR.*

Provenance - Ex Seabys 05/1985, Ex Johnstone Collection sold by Spink 1995, Ex Spink 07/2007, Ex Morris Collection

**£360**





Charles I, (1625 - 49) ,Tower Mint under the King (1625 - 42) Shilling, Group E, type 4var, mm. Anchor (S 2797; Sharp F5/2)

*a really interesting and appealing coin. The reverse superb*

Provenance - Ex M&H Coins, Ex Paul Woodard Collection

**£230**



Charles I, (1625 - 49) ,Tower Mint under the King (1625 - 42) Shilling, Group F type 4.4, mm. Triangle in circle (S 2799; Sharp G1/2)

*Toned with a good portrait.*

**£180**



Charles I, (1625 - 49) ,Tower Mint under Parliament (1642 - 49) Shilling, Group F, mm. (r) error (S 2800; Sharp G1/2)

*Assumed 1 of just 7 known with this incredible engravers error where the obverse mm. is sideways!*

Provenance - Ex Middleham Hoard, Ex Spink Auction 109 Ex A H Baldwins 1995, Ex Dr Hulett Collection, Ex M&H Coins

**£195**



Charles I (1625-1649), Tower mint under Parliament (1642-49), Shilling, Group F, mm. Eye over (r) / Eye (S.2800; Sharp g1/2).

*Appears to be a hoard coin however which isnt noted. Irregaular shape flan but of good weight and a very rare over mark*

Provenance - Ex RL Collection

**£190**



Charles I, (1625 - 49) ,Tower Mint under Parliament (1642-49) Shilling, Group F, mm. Eye (S 800; Sharp G1/2)

*Toned, good fine*

**£200**



Charles I, (1625 - 49) ,Tower Mint under Parliament (1642 - 49) Shilling, Group F mm. Sun  
(S 2800; Sharp G2/2)

*For issue better than very fine.*

**£225**



Charles I, (1625 - 49) ,Tower Mint under Parliament (1642 - 49) Shilling, Group F, mm. Sun  
(S 2801; Sharp G3/2)

*A very handsome coin, mint brilliance and a good very fine*

**£225**



Charles I (1625-1649), Tower mint under Parliament (1642-49), Shilling, Group F, type 4.5, mm. Sceptre  
(S.2802; Sharp H1/1).

*Large round flan, better than Fine*

Provenance - Ex P A Rayner 03/1985, £45, Ex Dr Hulett Collection

**£240**



Charles I, (1625 - 49) ,Tower Mint under Parliament (1642-49) Shilling, Group F, type 4.6mm. Sceptre (S2803: Sharp H2/2)

*Toned, good fine*

**Provenance - Ex Seabys 1964, Ex Dr Hulett**

**£240**



Charles I, (1625 - 49) ,Tower Mint under Parliament (1642 - 49) Shilling, Group F, type 4.6 mm. Sceptre  
(S 2803: Sharp H2/2)

*For issue better than very fine.*

**Provenance - A H Baldwins 06/1976, Ex Dr Hulett Collection**

**£140**



Charles I, (1625 - 49) ,Tower Mint under Parliament (1642 - 49) Shilling, Group F, type 4.6 mm. Sceptre  
(S 2804; Sharp H3/2)

*struck on a broad and full flan, fine +*

**£220**

THE SEDGEMOOR COLLECTION  
of Tower Mint Shillings

The  
**CIRCULAR**

Volume V

THE SEDGEMOOR COLLECTION  
of Tower Mint Shillings

The  
CIRCULAR

Volume V

TERMS OF SALE

All orders are subject to availability and offered on a first come first served basis.

All orders are subject to a postage and packaging fee of £5 (£12 for all international orders)

We guarantee that all of our coins and medals are genuine and have been graded accurately and in accordance with British grading standards.

When purchasing from M&H Coins please note that we require payment by card, cheque or bank transfer.  
We only accept pound sterling £.

All coins ordered and returns, are sent via the Royal Mail Special Delivery, alternative postal arrangements will be made for international sales. Shipping is free for all U.K. order via the website. Items sent via special delivery of a value in excess of the maximum insurance value offered by the Royal Mails special delivery service (£2,500) will be at the buyers own risk.

Orders are sent against remittance unless otherwise agreed.

Should you be unhappy with your purchase we offer a unconditional 7 day returns policy from receipt of you receiving them. It is the customers responsibly to return the coin in the original condition it was received in and it it to be returned at their own expense, fully insured. Items bought and later sent for third party grading will only be returnable should an item be graded as "not genuine".

Under no circumstances will any customer information of M&H Coins Be shared or disclosed to any third parties.

Copyright for all content featured on this website is owned by M&H Coins directors and it cannot be used or reproduced without our consent.



c o i n s



coins

THE SEDGEMOOR COLLECTION  
of Tower Mint Shillings

The  
**CIRCULAR**

Volume V