

CHARLES I THE COINAGE OF NEWARK, 1645 - 46

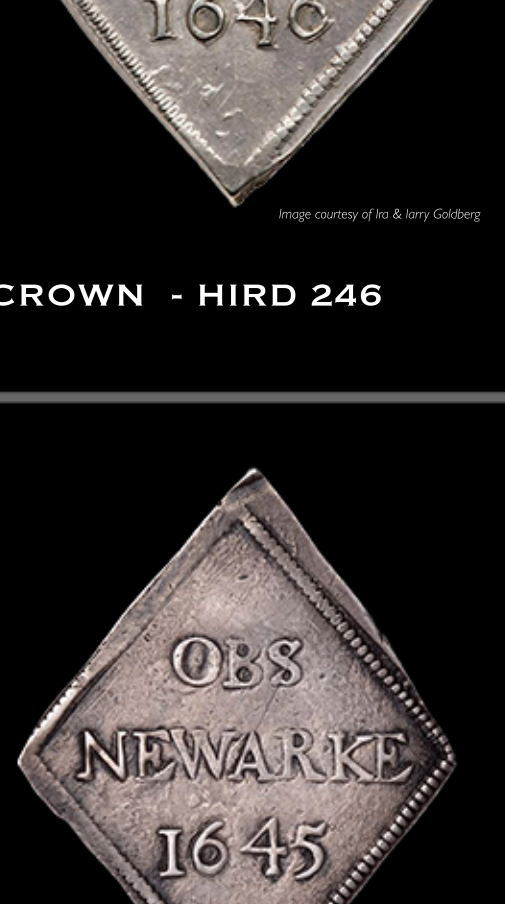
"Newark-on-Trent, after having withstood several successive sieges, was upon May 6, 1646, surrendered by the command of Charles I. to the Scottish army, at that time besieging the town, and two days afterwards it was transferred to the Commissioners of the English Parliament.

Coins were issued here dated 1645 and 1646; of the former year we have pieces of the values of half-a-crown, shilling and ninepence, whilst of the latter year we have, in addition to these denominations, the sixpence. The general design of the coins is the same, the obverse having within a beaded border a crown between the letters C R and the value expressed beneath in Roman numerals; whilst upon the reverse is the legend in three lines OBS NEWARK or NEWARKE, with the date beneath, in Arabic figures.

All the coins issued from Newark are struck upon lozenge-shaped flans, which were apparently cut direct from the dishes, trenchers and other varieties of silver plate in the town, or which could be obtained from Royalist adherents in the neighbouring country districts."

Extracts from "THE OBSSIDIONAL MONEY OF THE GREAT REBELLION, 1642-1649, by PHILIP NELSON, M. D.

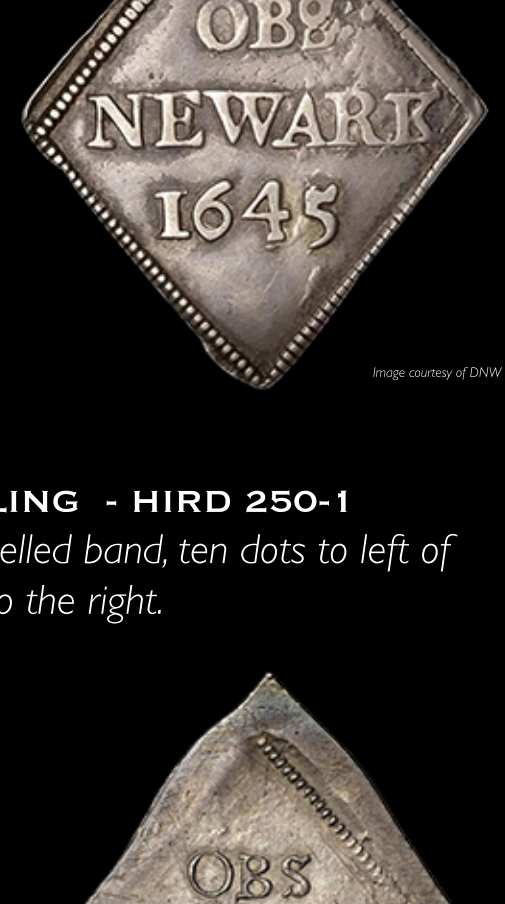
The purpose of this paper is to illustrate and examine as many as possible die variations in line with the HIRD references for this series. Starting with the Halfcrown down to the Sixpence. We thank the owners of the images used for their kind permission and have credited each individually beneath each illustration.



1645 NEWARK HALFCROWN - HIRD 245

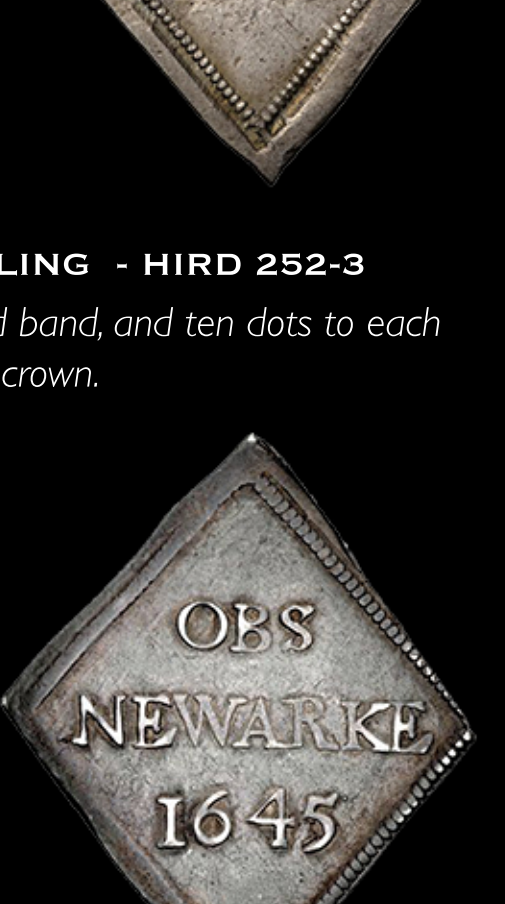


1646 NEWARK HALFCROWN - HIRD 246



1645 NEWARK(E) SHILLING - HIRD 247-8

Cruder flat crown, nine dots on each arch of crown



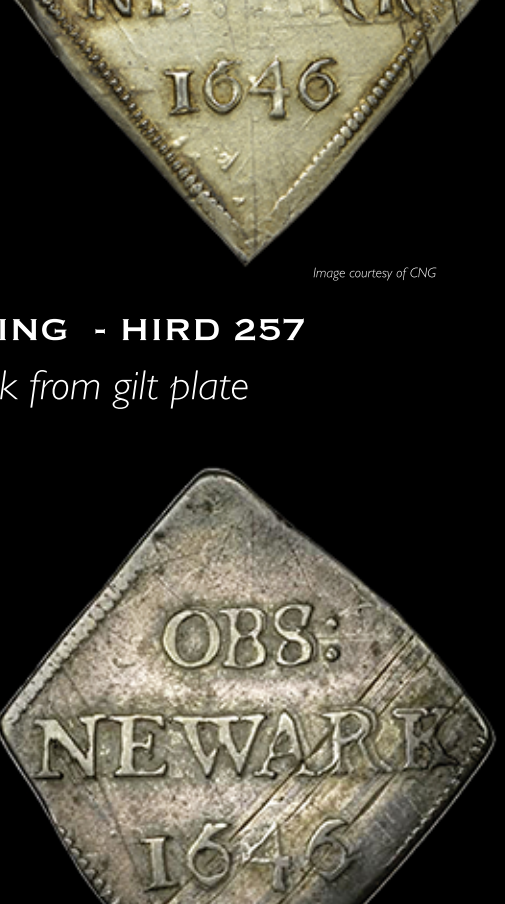
1645 NEWARK(E) SHILLING - HIRD 249

Similar to last but, nine dots to left arch, eight on the right



1645 NEWARK SHILLING - HIRD 250-1

Normal crown with simple jewelled band, ten dots to left of arch, eight to the right.



1645 NEWARK(E) SHILLING - HIRD 252-3

Normal crown with richly jewelled band, and ten dots to each side of the crown.



1645 NEWARK(E) SHILLING - HIRD 254

As last but eleven dots to the left and ten dots to the right of crown.



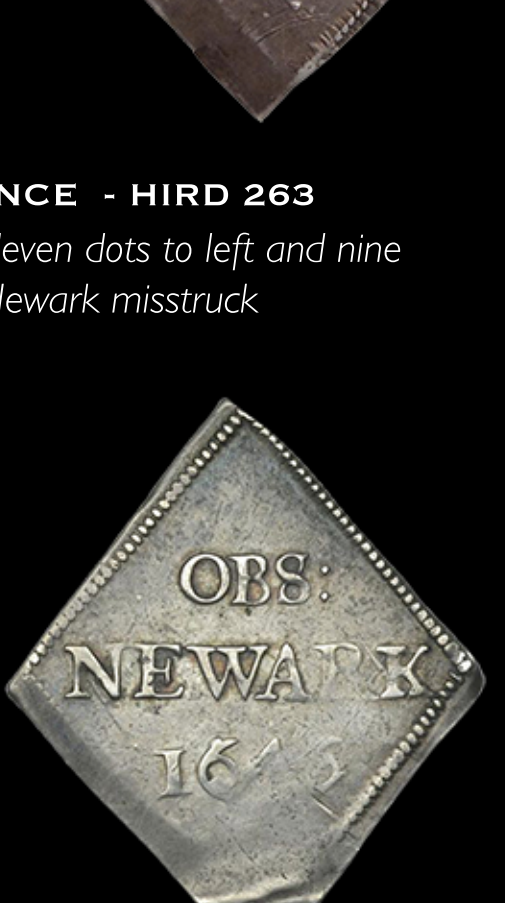
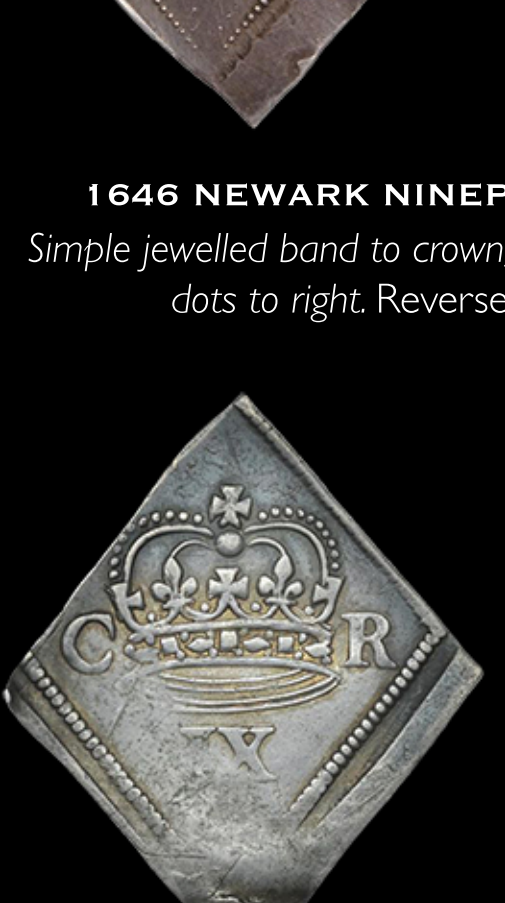
1646 NEWARK SHILLING - HIRD 255-6

Similar to last, but tens dots either side.



1646 NEWARK SHILLING - HIRD 257

Similar to last, but struck from gilt plate



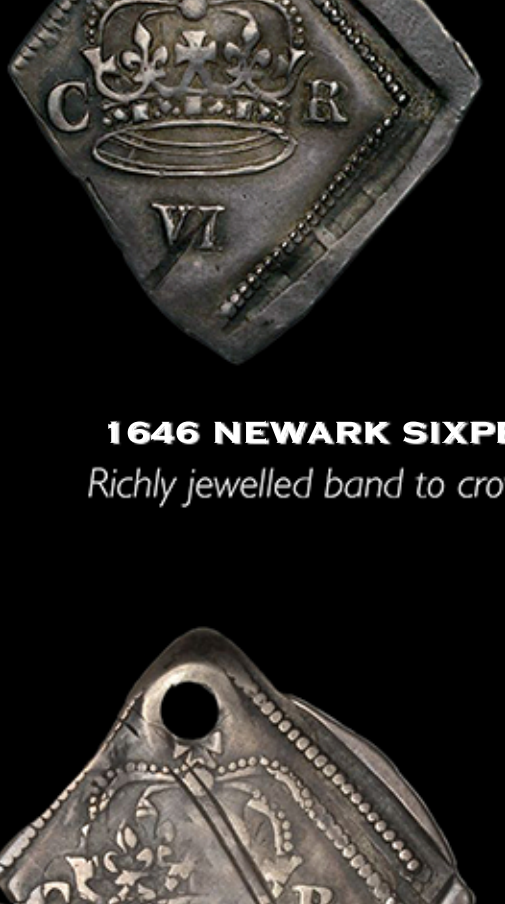
1646 NEWARK SHILLING - HIRD 258-9

Similar to last, but plate markings legible on the reverse. There are examples with the Royal coat of arms visible



1645 NEWARK(E) NINEPENANCE - HIRD 260

Simple jewelled band to crown, eleven dots to left, nine to right



1645 NEWARK(E) NINEPENANCE - HIRD 261

Similar to last but with lion and crowned leopard "hallmarks" on flan.



1645 NEWARK(E) NINEPENANCE - HIRD 262

Richly jewelled band to crown, eleven dots either side on flan.

1646 NEWARK NINEPENANCE - HIRD 263

Simple jewelled band to crown, eleven dots to left and nine dots to right. Reverse Newark misstruck

1646 NEWARK NINEPENANCE - HIRD 264

Richly jewelled band to crown, ten dots either side

1646 NEWARK NINEPENANCE - HIRD 265

As last but struck on a gilt flan

1646 NEWARK NINEPENANCE - HIRD 266

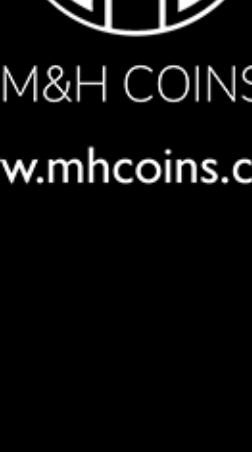
As last but not gilt, with what purports to be plate markings

1646 NEWARK SIXPENANCE - HIRD 267-8

Richly jewelled band to crown, twelve dots either side

1646 NEWARK SIXPENANCE - HIRD 269

As last but on a gilt flan, and appears to have a hallmark from original plate



M&H COINS

www.mhcoins.co.uk