



Essential Validation Services



Sample:

Client: | Be Kind Botanicals
Sample: | Lavender (Lavandula angustifolia)
Batch # | NZL1801
CAS Number | 8000-28-0
Type: | Essential Oil

Conclusion:

- No adulterants, diluents, or contaminants were detected via this method.
- This oil meets the expected profile for genuine essential oil of Lavender (Lavandula angustifolia).



X 

Validated By:

Essential Validation Services

747 SW 2nd Ave, Gainesville, FL 32601

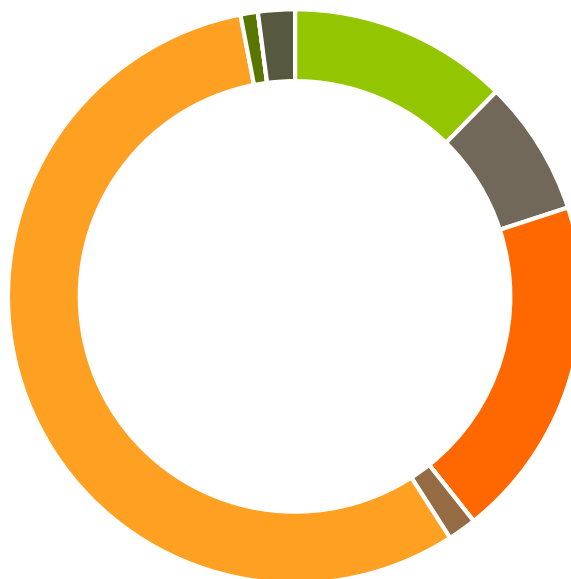
Phone: 317-361-5044 E-mail: Adam@essentialvalidationservices.com

Summary of Analyses

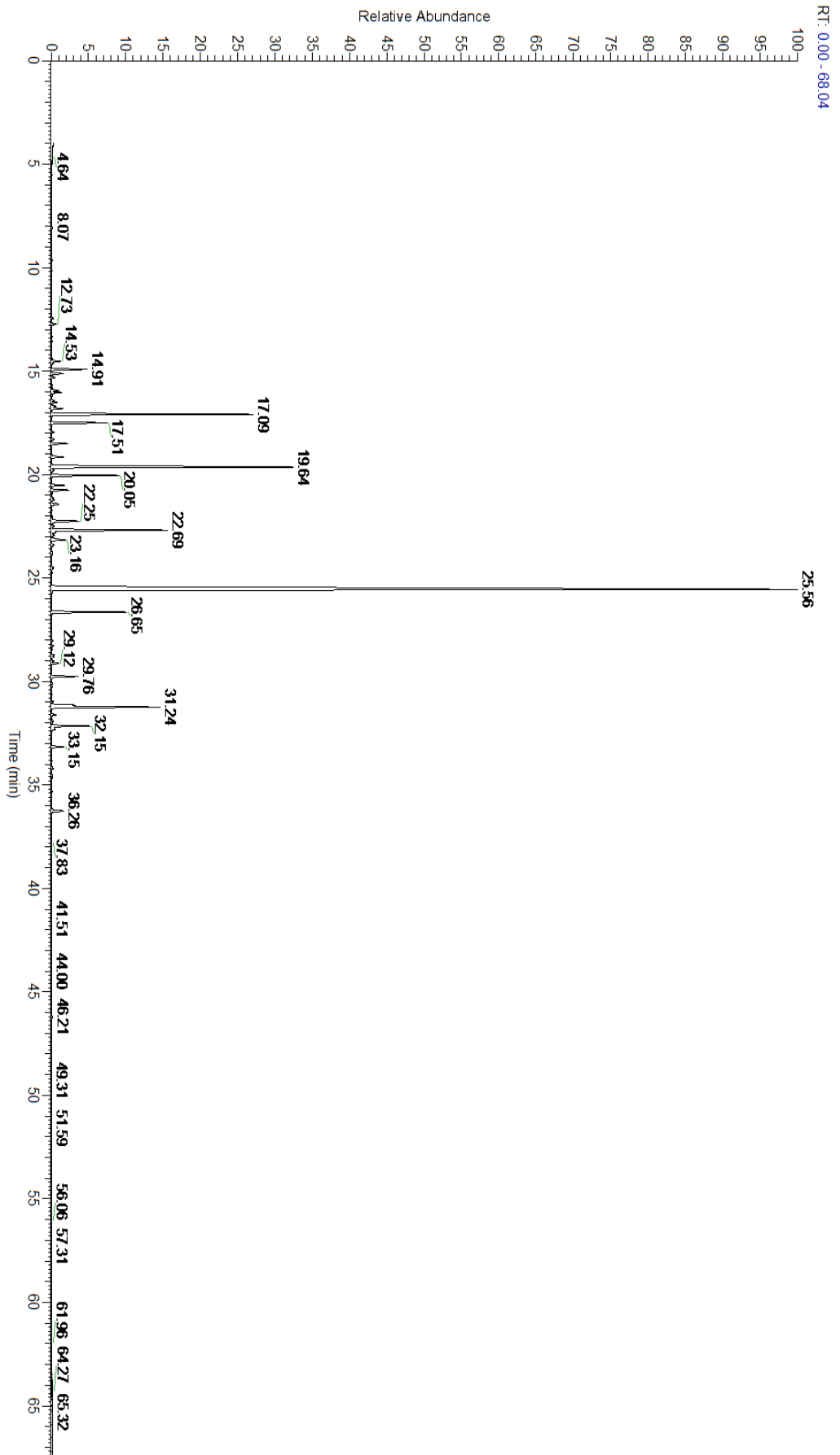
A fresh sample of Lavender (Lavandula angustifolia) Essential Oil (10 uL in .5to.5 mL Hexane + ETOH) was prepared and analyzed via split injection GC/EI-MS.

Main Compounds	Percentages
Linalyl acetate	48.96%
Linalool	11.01%
(Z)-beta-Ocimene	7.64%
Terpinen-4-ol	4.72%
beta-Caryophyllene	4.44%
Lavandulyl acetate	2.73%
1-Octenyl-3 acetate	2.35%
(E)-beta-Ocimene	1.93%
(Z)-beta-Farnesene	1.45%
Octan-3-one	1.24%
Borneol	1.23%
Geranyl acetate	0.99%
alpha-Santalene	0.74%

Monoterpenes	Sesquiterpenes	Monoterpenols	Sesquiterpenols	Ketones
12.36%	7.63%	19.32%	0.00%	1.61%
Esters	Ethers	Aldehydes	Phenols	Other
56.03%	0.98%	0.00%	0.00%	2.07%



- Monoterpenes
- Sesquiterpenes
- Monoterpenols
- Sesquiterpenols
- Ketones
- Esters
- Ethers
- Phenols
- Other



ESSENTIAL VALIDATION SERVICES | 747 SW 2ND AVE GAINESVILLE, FLORIDA 32601 | 317-361-5044

Total Percentage		98.01%			
Peak Number	RT	Area %	Compound Name	RI	Chemical Family
1	12.46	0.07%	alpha-Thujene	927.80	Monoterpene
2	12.73	0.18%	alpha-Pinene	936.10	Monoterpene
3	13.34	0.04%	Camphene	950.30	Monoterpene
4	14.39	0.04%	Sabinene	973.00	Monoterpene
5	14.53	0.34%	beta-Pinene	974.00	Monoterpene
6	14.63	0.08%	1-Octen-3-ol	980.00	Aliphatic Alcohol
7	14.91	1.24%	Octan-3-one	981.00	Aliphatic Ketone
8	15.12	0.46%	Myrcene	989.20	Monoterpene
9	15.31	0.14%	Butyl butyrate	993.00	Aliphatic Ester
10	15.69	0.03%	alpha-Phellandrene	1002.00	Monoterpene
11	16.03	0.36%	delta-3-Carene	1008.00	Monoterpene
12	16.19	0.03%	alpha-Terpinene	1014.00	Monoterpene
13	16.41	0.11%	meta-Cymene	1022.00	Monoterpene
14	16.52	0.22%	para-Cymene	1024.30	Monoterpene
15	16.70	0.19%	Limonene	1029.50	Monoterpene
16	16.81	0.44%	1,8-Cineole	1031.80	Monoterpene Ether
17	17.09	7.64%	(Z)-beta-Ocimene	1037.80	Monoterpene
18	17.51	1.93%	(E)-beta-Ocimene	1047.70	Monoterpene
19	17.96	0.09%	gamma-Terpinene	1054.00	Monoterpene
20	18.30	0.10%	trans-Sabinene hydrate	1072.00	Monoterpenol
21	18.51	0.61%	cis-Linalool oxide (5) (furanoid)	1075.10	Monoterpenol
22	19.15	0.51%	trans-Linalool oxide (5) (furanoid)	1092.20	Monoterpenol
23	19.64	11.01%	Linalool	1099.00	Monoterpenol
24	20.05	2.35%	1-Octenyl-3 acetate	1107.00	Monoterpene Ester
25	20.52	0.43%	Octan-3-yl acetate	1124.00	Aliphatic Ester
26	20.75	0.63%	Alloocimene	1129.90	Monoterpene
27	21.22	0.13%	trans-Pinocarveol	1143.75	Monoterpenol
28	21.43	0.37%	Camphor	1147.55	Monoterpene Ketone
29	22.25	1.23%	Borneol	1168.71	Monoterpenol
30	22.48	0.11%	Lavandulol	1161.50	Monoterpenol
31	22.69	4.72%	Terpinen-4-ol	1180.57	Monoterpenol
32	22.93	0.12%	para-Cymen-8-ol	1185.25	Monoterpenol
33	23.16	0.73%	alpha-Terpineol	1191.71	Monoterpenol
34	24.50	0.08%	Bornyl formate	1227.00	Monoterpene Ester
35	24.56	0.05%	Nerol	1230.67	Monoterpenol
36	25.56	48.96%	Linalyl acetate	1263.80	Monoterpene Ester
37	26.65	2.73%	Lavandulyl acetate	1285.00	Monoterpene Ester
38	28.02	0.06%	Hexyl tiglate	1331.00	Monoterpene Ester
39	29.12	0.29%	Neryl acetate	1362.90	Monoterpene Ester
40	29.76	0.99%	Geranyl acetate	1379.20	Monoterpene Ester
41	30.97	0.06%	cis-alpha-Bergamotene	1411.50	Sesquiterpene
42	31.14	0.74%	alpha-Santalene	1426.50	Sesquiterpene
43	31.24	4.44%	beta-Caryophyllene	1427.14	Sesquiterpene

