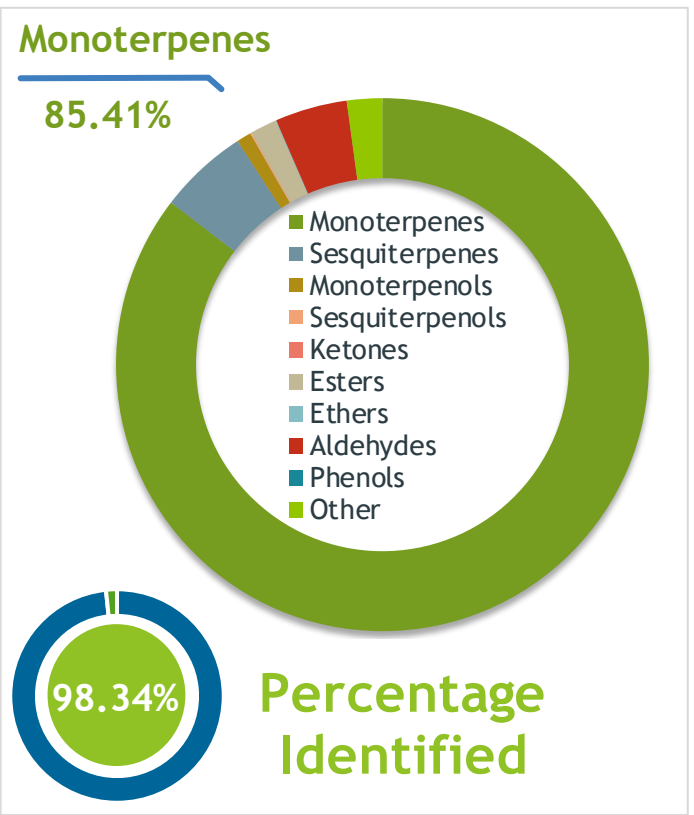


Client  **Source** 

Lime (*Citrus aurantifolia*)
CPCA190201

Sample Lime (*Citrus aurantifolia*)
Batch #:..... CPCA190201
Type:..... Essential Oil
CAS Number:... 8008-26-2
Be Kind Botanicals



Client  **Website** 

Primary

49.47% Limonene
13.89% gamma-Terpinene
13.17% beta-Pinene

Result 

Conclusion No adulterants, diluents, or contaminants were detected via this method. This oil meets the expected profile for genuine essential oil of Lime (*Citrus aurantifolia*)

Internal Number: | EVS-2908


Essential Validation Services
747 SW 2nd Ave IMB 12 Suite 306
Gainesville, FL 32601
317.361.5044 |
<https://essentialvalidationservices.com/>
adam@essentialvalidationservices.com


| | | |
|-----------------|--------|--------|
| Monoterpenes | 85.41% | 85.41% |
| Sesquiterpenes | 5.44% | |
| Monoterpenols | 0.88% | |
| Sesquiterpenols | 0.09% | |
| Ketones | 0.00% | |
| Esters | 1.60% | |
| Ethers | 0.05% | |
| Aldehydes | 4.38% | |
| Phenols | 0.00% | |
| Other | 2.15% | |

ESSENTIAL VALIDATION SERVICES | 747 SW 2ND AVE GAINESVILLE, FLORIDA 32601 | 317-361-5044

Client



Source



Lime (*Citrus aurantifolia*)
CPA190201

| Total Percentage | | 98.34% | | | |
|------------------|-------|--------|-----------------------------------|---------|----------------------|
| Number | RT | Area % | Compound Name | RI | Chemical Family |
| 1 | 12.54 | 0.64% | alpha-Thujene | 927.80 | Monoterpene |
| 2 | 12.82 | 2.34% | alpha-Pinene | 936.10 | Monoterpene |
| 3 | 13.45 | 0.07% | Camphene | 950.30 | Monoterpene |
| 4 | 14.52 | 2.26% | Sabinene | 973.00 | Monoterpene |
| 5 | 14.66 | 13.17% | beta-Pinene | 974.00 | Monoterpene |
| 6 | 15.23 | 1.76% | Myrcene | 989.20 | Monoterpene |
| 7 | 15.78 | 0.07% | alpha-Phellandrene | 1002.00 | Monoterpene |
| 8 | 16.31 | 0.31% | alpha-Terpinene | 1014.00 | Monoterpene |
| 9 | 16.67 | 0.57% | para-Cymene | 1024.30 | Monoterpene |
| 10 | 16.98 | 49.47% | Limonene | 1029.50 | Monoterpene |
| 11 | 17.18 | 0.05% | (Z)-beta-Ocimene | 1037.80 | Monoterpene |
| 12 | 17.62 | 0.13% | (E)-beta-Ocimene | 1047.70 | Monoterpene |
| 13 | 18.13 | 13.89% | gamma-Terpinene | 1054.00 | Monoterpene |
| 14 | 18.42 | 0.04% | trans-Sabinene hydrate | 1072.00 | Monoterpenol |
| 15 | 18.63 | 0.02% | cis-Linalool oxide (5) (furanoid) | 1075.10 | Monoterpenol |
| 16 | 19.28 | 0.68% | Terpinolene | 1092.10 | Monoterpene |
| 17 | 19.68 | 0.22% | Linalool | 1099.00 | Monoterpenol |
| 18 | 21.21 | 0.05% | cis-Limonene oxide | 1136.00 | Monoterpene Ether |
| 19 | 21.77 | 0.04% | Isopulegol | 1151.25 | Monoterpenol |
| 20 | 22.77 | 0.08% | Terpinen-4-ol | 1180.57 | Monoterpenol |
| 21 | 23.25 | 0.28% | alpha-Terpineol | 1191.71 | Monoterpenol |
| 22 | 23.71 | 0.06% | Decanal | 1206.57 | Aliphatic Aldehyde |
| 23 | 24.57 | 0.13% | Nerol | 1230.67 | Monoterpenol |
| 24 | 25.04 | 1.55% | Neral | 1246.57 | Monoterpene Aldehyde |
| 25 | 25.49 | 0.07% | Geraniol | 1255.29 | Monoterpenol |
| 26 | 26.09 | 2.60% | Geranial | 1272.00 | Monoterpene Aldehyde |
| 27 | 26.31 | 0.04% | Perilla aldehyde | 1281.00 | Monoterpene Aldehyde |
| 28 | 28.51 | 0.13% | delta-Elemene | 1335.83 | Sesquiterpene |
| 29 | 29.22 | 1.32% | Neryl Acetate | 1362.90 | Monoterpene Ester |
| 30 | 29.85 | 0.28% | Geranyl acetate | 1379.20 | Monoterpene Ester |
| 31 | 30.34 | 0.20% | beta-Elemene | 1389.20 | Sesquiterpene |
| 32 | 30.69 | 0.05% | Dodecanal | 1397.80 | Aliphatic Aldehyde |
| 33 | 31.06 | 0.09% | cis-alpha-Bergamotene | 1411.50 | Sesquiterpene |
| 34 | 31.32 | 0.71% | beta-Caryophyllene | 1427.14 | Sesquiterpene |
| 35 | 31.71 | 1.41% | trans-alpha-Bergamotene | 1435.00 | Sesquiterpene |

ESSENTIAL VALIDATION SERVICES | 747 SW 2ND AVE GAINESVILLE, FLORIDA 32601 | 317-361-5044

