

Client  **Source** 

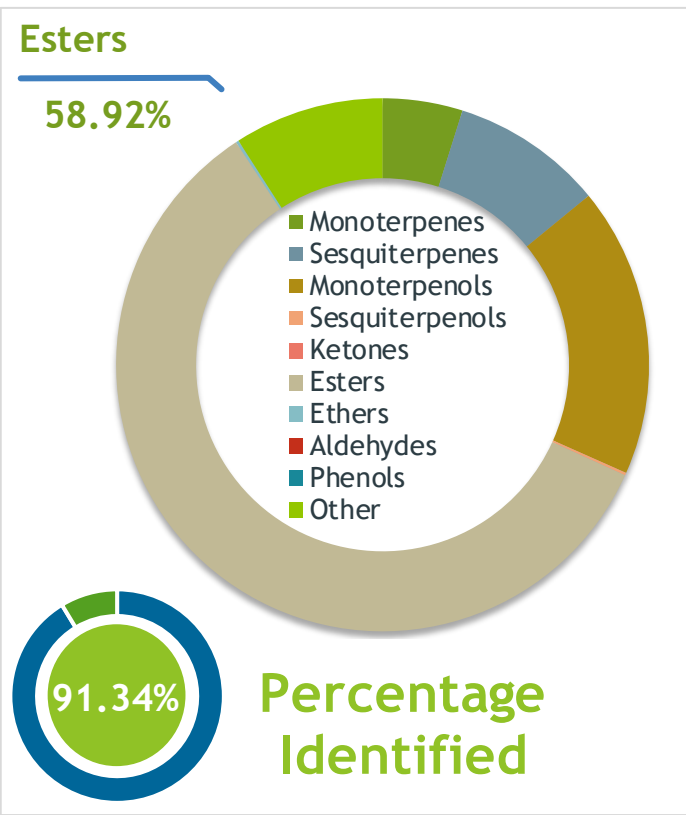
Clary Sage (*Salvia sclarea*)
CS1807

Sample Clary Sage (*Salvia sclarea*)
Batch #:..... CS1807
Type:..... Essential Oil
CAS Number:... 8016-63-5
Be Kind Botanicals

Client  **Website** 

Primary

<u>57.32%</u>	<u>Linalyl acetate</u>
<u>15.80%</u>	<u>Linalool</u>
<u>2.83%</u>	<u>alpha-Copaene</u>



Result 

Conclusion No adulterants, Diluents, or contaminants were detected via this method. This oil meets the expected profile for genuine essential oil of Clary Sage (*Salvia sclarea*)

Internal Number: | EVS-3018


Essential Validation Services
747 SW 2nd Ave IMB 12 Suite 306
Gainesville, FL 32601
317.361.5044 |
<https://essentialvalidation.com/>
adam@essentialvalidation.com


Monoterpenes	4.85%
Sesquiterpenes	9.22%
Monoterpenols	17.58%
Sesquiterpenols	0.16%
Ketones	0.00%
Esters	58.92%
Ethers	0.17%
Aldehydes	0.00%
Phenols	0.00%
Other	9.10%

ESSENTIAL VALIDATION SERVICES | 747 SW 2ND AVE GAINESVILLE, FLORIDA 32601 | 317-361-5044

Client



Source



Clary Sage (*Salvia sclarea*)
CS1807

Total Percentage		91.34%			
Number	RT	Area %	Compound Name	RI	Chemical Family
1	12.50	0.10%	alpha-Pinene	936.10	Monoterpene
2	13.11	0.01%	Camphene	950.30	Monoterpene
3	14.15	0.01%	Sabinene	973.00	Monoterpene
4	14.28	0.08%	beta-Pinene	974.00	Monoterpene
5	14.89	2.42%	Myrcene	989.20	Monoterpene
6	16.45	0.21%	Limonene	1029.50	Monoterpene
7	16.82	0.32%	(Z)-beta-Ocimene	1037.80	Monoterpene
8	17.24	1.07%	(E)-beta-Ocimene	1047.70	Monoterpene
9	18.91	0.07%	gamma-Terpinene	1054.00	Monoterpene
10	19.40	15.80%	Linalool	1099.00	Monoterpenol
11	20.48	0.22%	Alloocimene	1129.90	Monoterpene
12	21.96	0.03%	Borneol	1168.71	Monoterpenol
13	22.39	0.01%	Terpinen-4-ol	1180.57	Monoterpenol
14	22.87	1.20%	alpha-Terpineol	1191.71	Monoterpenol
15	23.75	0.54%	Nerol	1230.67	Monoterpenol
16	25.31	57.32%	Linalyl acetate	1263.80	Monoterpene Ester
17	26.32	0.05%	Bornyl acetate	1288.29	Monoterpene Ester
18	27.78	0.02%	Dihydrocarvyl acetate	1330.50	Monoterpene Ester
19	28.11	0.23%	delta-Elemene	1335.83	Sesquiterpene
20	28.43	0.06%	alpha-Terpinyl acetate	1353.00	Monoterpene Ester
21	28.52	0.05%	Neryl acetate	1362.90	Monoterpene Ester
22	28.83	1.31%	Geranyl acetate	1379.20	Monoterpene Ester
23	29.45	2.83%	alpha-Copaene	1379.00	Sesquiterpene
24	29.76	0.15%	beta-Bourbonene	1388.70	Sesquiterpene
25	29.91	0.32%	beta-Elemene	1389.20	Sesquiterpene
26	30.90	2.27%	beta-Caryophyllene	1427.14	Sesquiterpene
27	31.19	0.39%	gamma-Elemene	1434.00	Sesquiterpene
28	31.67	0.16%	alpha-Humulene	1461.43	Sesquiterpene
29	31.96	0.25%	allo-Aromadendrene	1471.00	Sesquiterpene
30	32.83	2.23%	Germacrene D	1484.71	Sesquiterpene
31	33.02	0.34%	1-epi-Bicyclosesquiphellandrene	1489.25	Monoterpene
32	33.31	0.19%	gamma-Murolene	1478.86	Sesquiterpene
33	34.05	0.20%	delta-Cadinene	1524.14	Sesquiterpene
34	35.73	0.12%	Spathulenol	1587.00	Sesquiterpenol
35	35.92	0.17%	Caryophyllene oxide	1594.86	Sesquiterpene Ether

ESSENTIAL VALIDATION SERVICES | 747 SW 2ND AVE GAINESVILLE, FLORIDA 32601 | 317-361-5044

