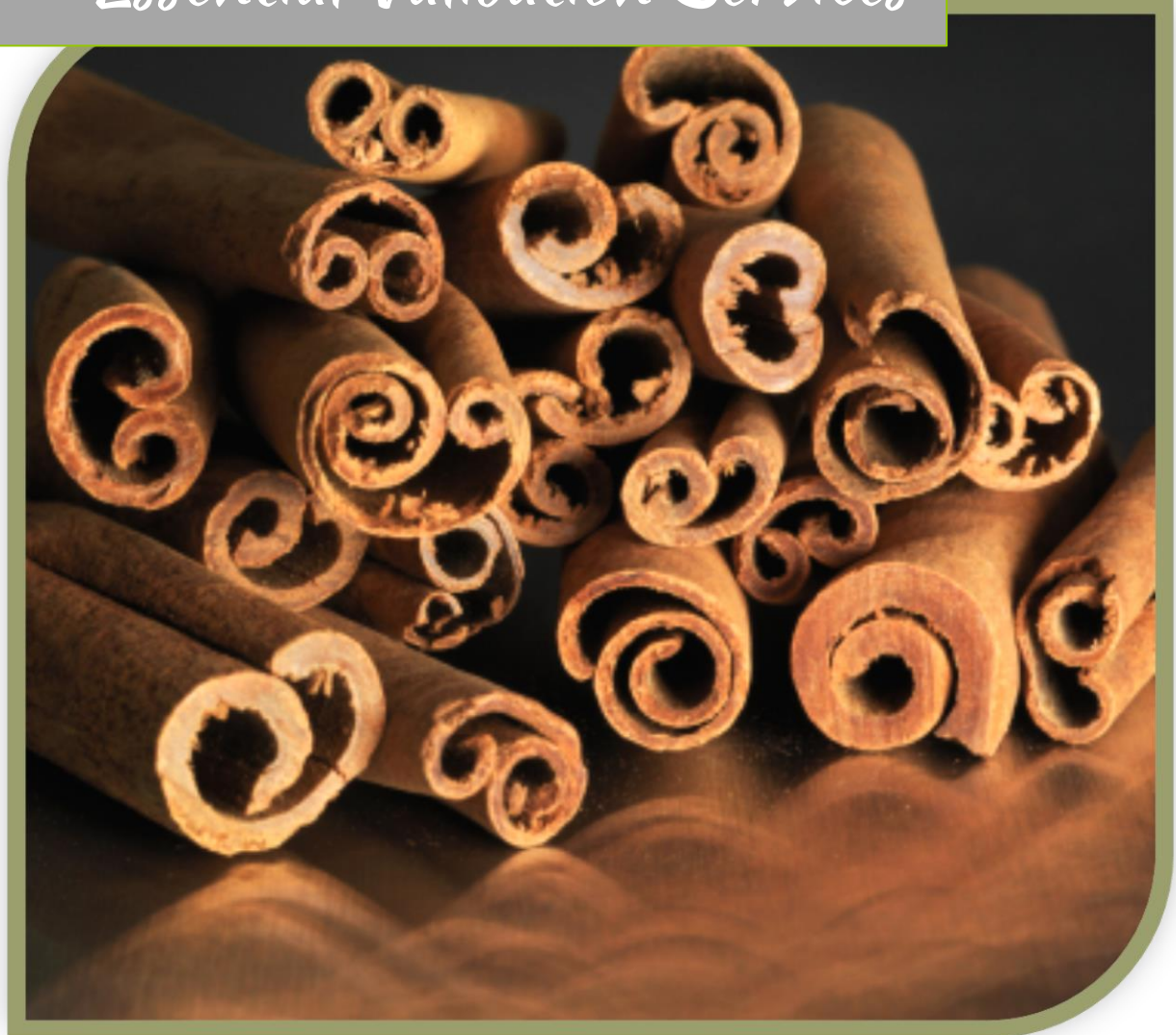




Essential Validation Services



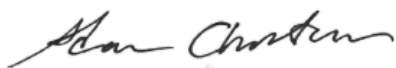
Sample:

Client: | Be Kind Botanicals
Sample: | Cinnamon Bark (Cinnamomum zeylanicum)
Batch # | CB201704
Cas Number | 8015-91-6
Type: | Essential Oil

Conclusion:

- No adulterants, diluents, or contaminants were detected via this method.
- This oil meets the expected profile for genuine essential oil of Cinnamon Bark (Cinnamomum zeylanicum).

X



Validated By:



Essential Validation Services

747 SW 2nd Ave, Gainesville, FL 32601

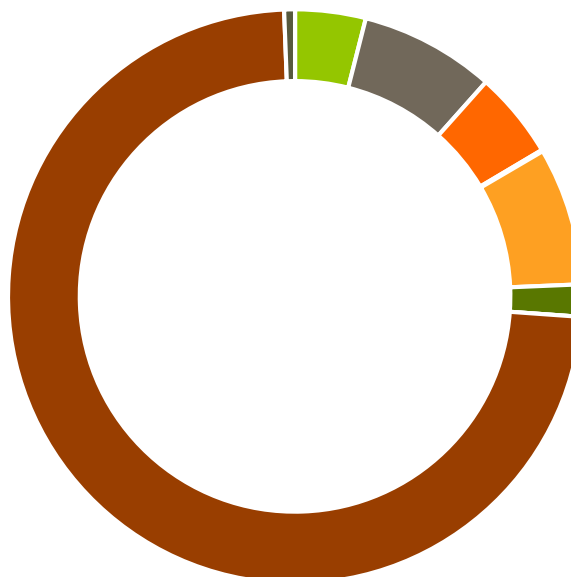
Phone: 317-361-5044 E-mail: Adam@essentialvalidationservices.com

Summary of Analyses

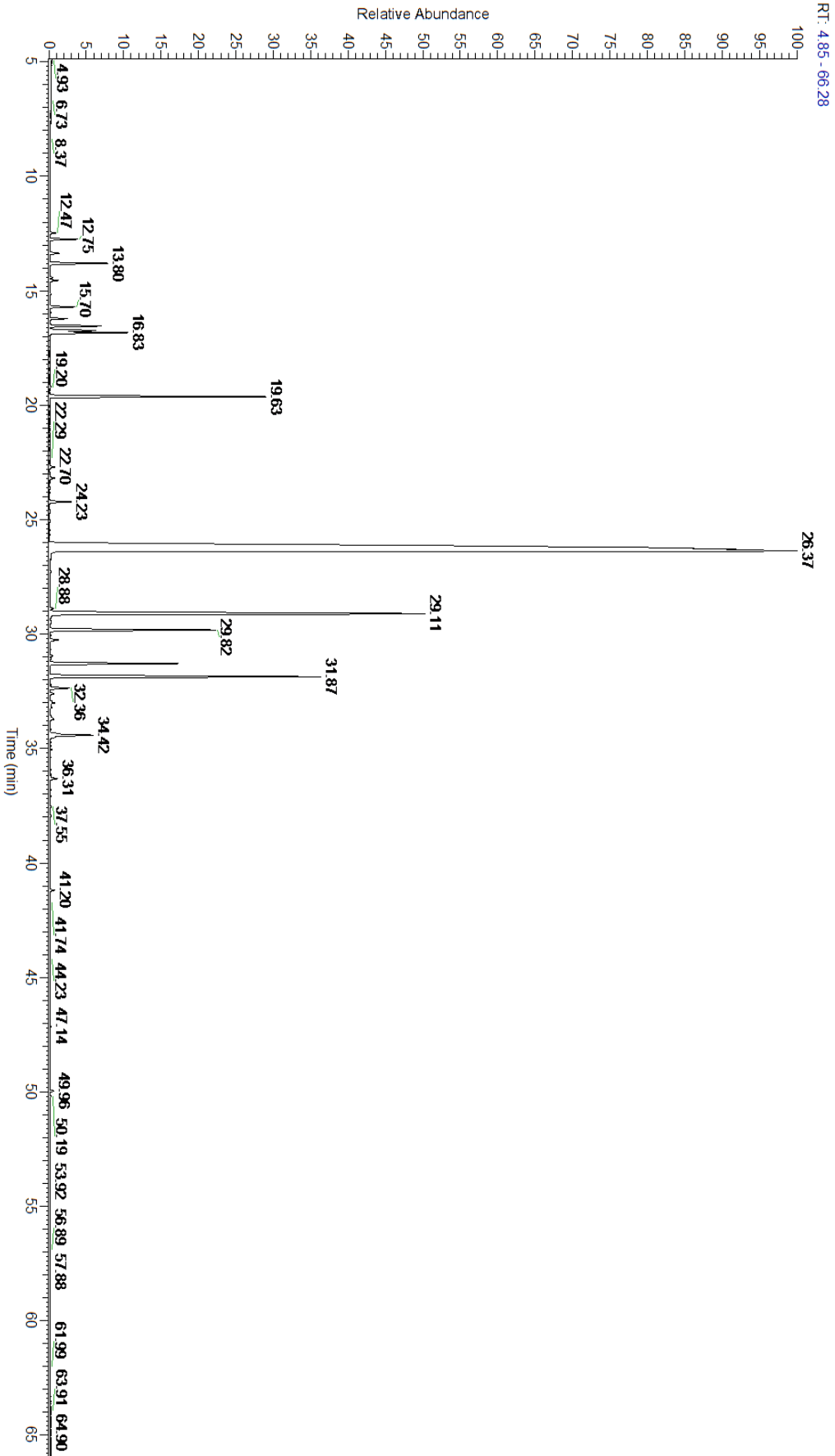
A fresh sample of Cinnamon Bark (Cinnamomum zeylanicum) Essential Oil (10 uL in .5 to .5 mL Hexane + ETOH) was prepared and analyzed via split injection GC/EI-MS.

Main Compounds	Percentages
(E)-Cinnamaldehyde	60.41%
Eugenol	11.02%
(E)-Cinnamyl acetate	6.50%
Linalool	4.66%
alpha-Copaene	3.66%
beta-Caryophyllene	2.90%
1,8-Cineole	1.62%
Benzaldehyde	1.22%
Eugenyl acetate	1.17%
para-Cymene	1.04%
Limonene (Co-Eluting)	1.00%
alpha-Pinene	0.53%
alpha-Phellandrene	0.48%

Monoterpenes	Sesquiterpenes	Monoterpenols	Sesquiterpenols	Ketones
3.97%	7.61%	4.90%	0.08%	0.00%
Esters	Ethers	Aldehydes	Phenols	Other
7.77%	1.81%	0.00%	73.25%	0.61%



- Monoterpenes
- Sesquiterpenes
- Monoterpenols
- Sesquiterpenols
- Ketones
- Esters
- Ethers
- Phenols
- Other



Total Percentage		99.39%			
Peak Number	RT	Area %	Compound Name	RI	Chemical Family
1	12.47	0.11%	alpha-Thujene	927.80	Monoterpene
2	12.75	0.53%	alpha-Pinene	936.10	Monoterpene
3	13.37	0.22%	Camphene	950.30	Monoterpene
4	13.80	1.22%	Benzaldehyde	958.00	Simple Phenolic
5	14.42	0.06%	Sabinene	973.00	Monoterpene
6	14.55	0.17%	beta-Pinene	974.00	Monoterpene
7	15.15	0.03%	Myrcene	989.20	Monoterpene
8	15.70	0.48%	alpha-Phellandrene	1002.00	Monoterpene
9	15.95	0.02%	delta-3-Carene	1008.00	Monoterpene
10	16.22	0.28%	alpha-Terpinene	1014.00	Monoterpene
11	16.54	1.04%	para-Cymene	1024.30	Monoterpene
12	16.74	1.00%	Limonene	1029.50	Monoterpene
13	16.75	Co-Eluting	beta-Phellandrene	1030.00	Monoterpene
14	16.83	1.62%	1,8-Cineole	1031.80	Monoterpene Ether
15	19.20	0.03%	Terpinolene	1092.10	Monoterpene
16	19.63	4.66%	Linalool	1099.00	Monoterpenol
17	22.29	0.02%	Borneol	1168.71	Monoterpenol
18	22.70	0.11%	Terpinen-4-ol	1180.57	Monoterpenol
19	23.19	0.11%	alpha-Terpineol	1191.71	Monoterpenol
20	24.23	0.46%	(Z)-Cinnamyl aldehyde	1217.00	Phenylpropanoid
21	26.37	60.41%	(E)-Cinnamaldehyde	1267.67	Phenylpropanoid
22	27.26	0.03%	(E)-Cinnamyl alcohol	1306.75	Phenylpropanoid
23	28.88	0.08%	alpha-Cubebene	1355.71	Sesquiterpene
24	29.11	11.02%	Eugenol	1365.89	Phenylpropanoid
25	29.46	0.02%	Hydrocinnamylacetate	1366.25	Phenol
26	29.82	3.66%	alpha-Copaene	1379.00	Sesquiterpene
27	30.26	0.19%	beta-Cubebene	1390.50	Sesquiterpene
28	31.29	2.90%	beta-Caryophyllene	1427.14	Sesquiterpene
29	31.87	6.50%	(E)-Cinnamyl acetate	1443.50	Phenylpropanoid Ester
30	32.36	0.42%	alpha-Humulene	1461.43	Sesquiterpene
31	32.60	0.09%	(E)-Cinnamic acid	1470.00	Phenylpropanoid
32	33.01	0.13%	gamma-Murolene	1478.86	Sesquiterpene
33	33.21	0.05%	Germacrene D	1484.71	Sesquiterpene
34	33.72	0.16%	alpha-Murolene	1500.25	Sesquiterpene
35	34.42	1.17%	Eugenyl acetate	1524.75	Phenylpropanoid Ester
36	34.71	0.02%	trans-alpha-Bisabolene	1537.33	Sesquiterpene
37	35.39	0.01%	(Z)-Nerolidol	1542.25	Sesquiterpenol
38	36.13	0.02%	Spathulenol	1587.00	Sesquiterpenol
39	36.31	0.19%	Caryophyllene oxide	1594.86	Sesquiterpene Ether
40	37.81	0.01%	T-Cadinol	1640.43	Sesquiterpenol
41	37.94	0.04%	Cubenol	1642.14	Sesquiterpenol
42	41.20	0.10%	Benzyl benzoate	1752.00	Phenolic Ester