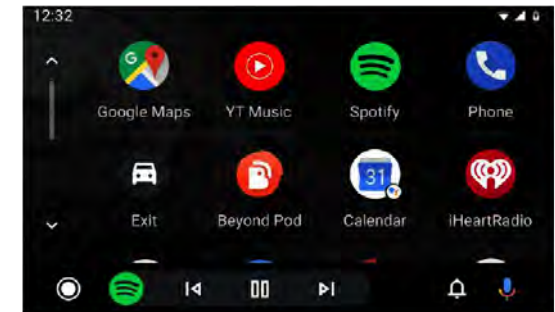
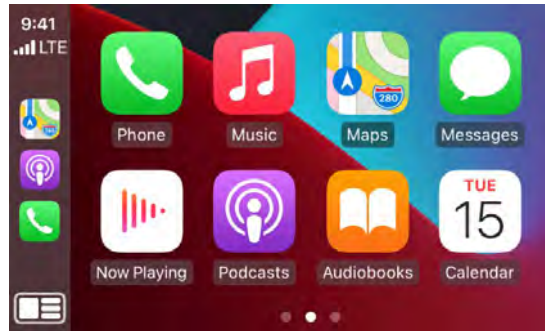


ITZ-CDR31-A

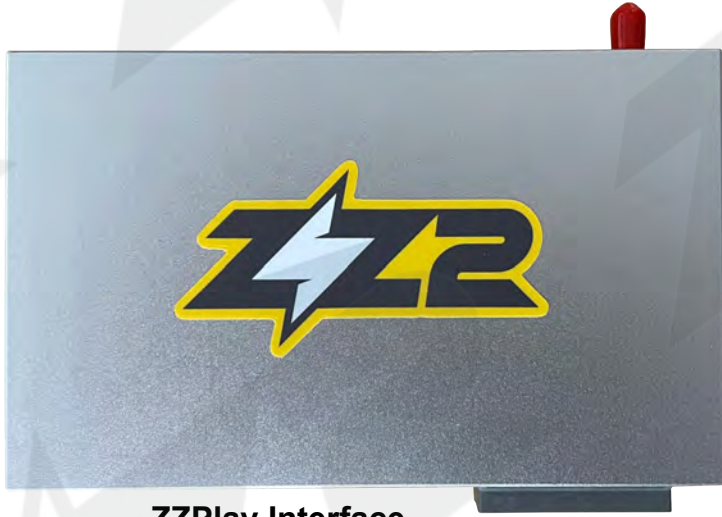


CarPlay / Android Auto + Camera input for Porsche vehicles
equipped with the CDR31 NON-NAV System



929-220-1212 / 877-241-2526 - www.zz-2.com

Components



ZZPlay Interface



Touch/Video PCB Module



Microphone (optional)



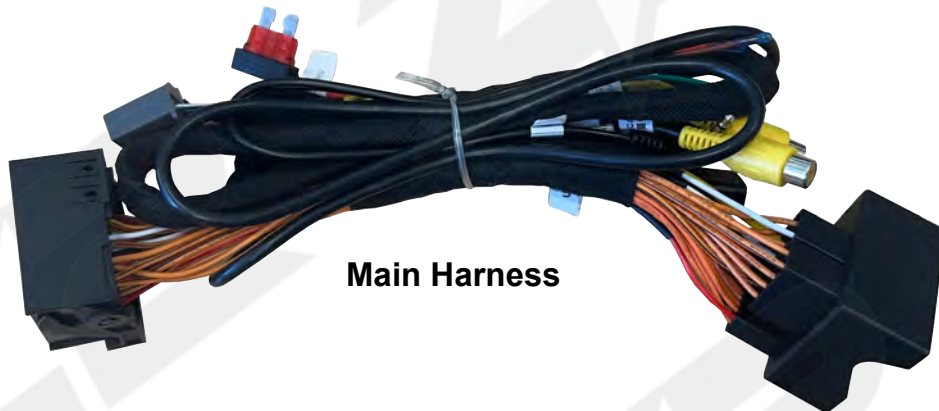
Modification Ribbon



BT/WIFI SMB Antenna



Touch Cable



Main Harness



Switching/LVDS Harness



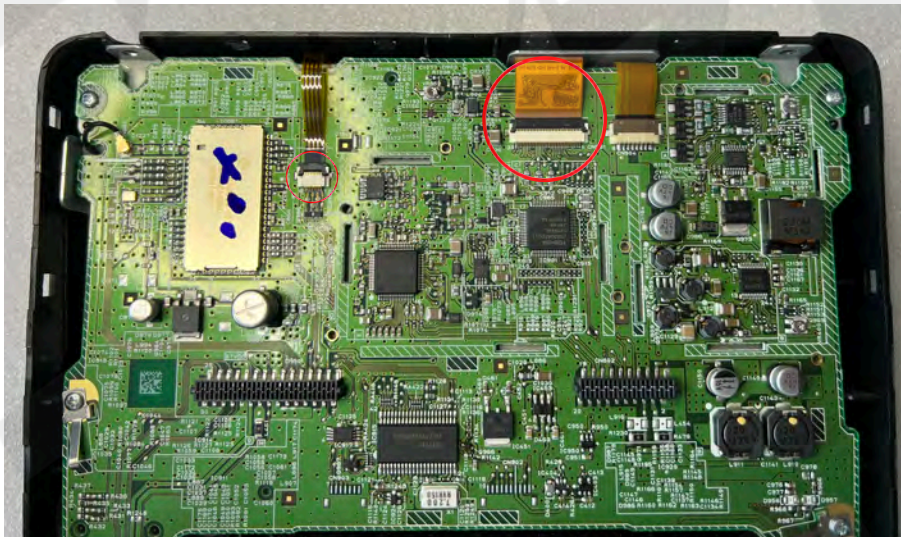
Velcro for module

CDR31 Radio Modification

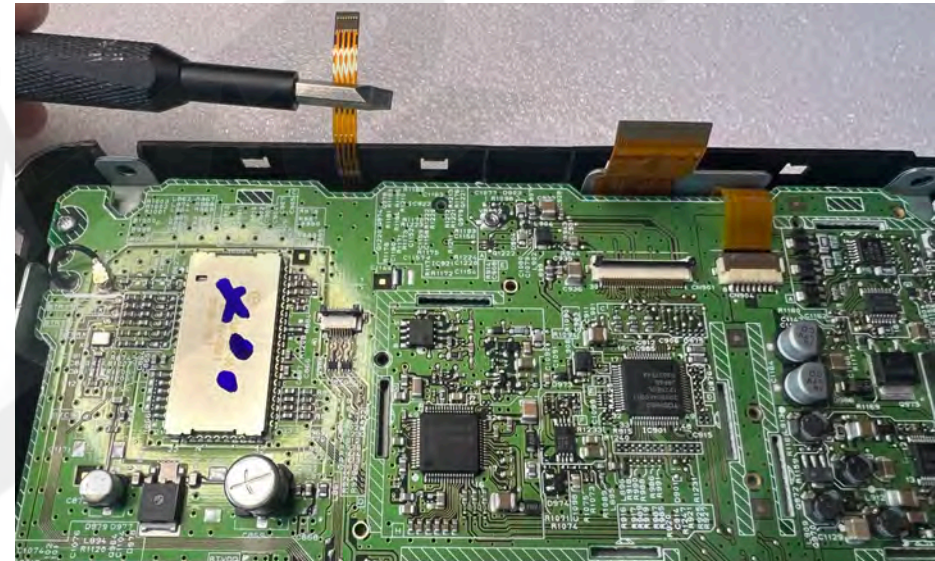
1. Remove the radio from the dashboard and bring to a bench top for modification. Use something soft to protect from scratches.
2. Remove (2x) screws from the top of the radio face.



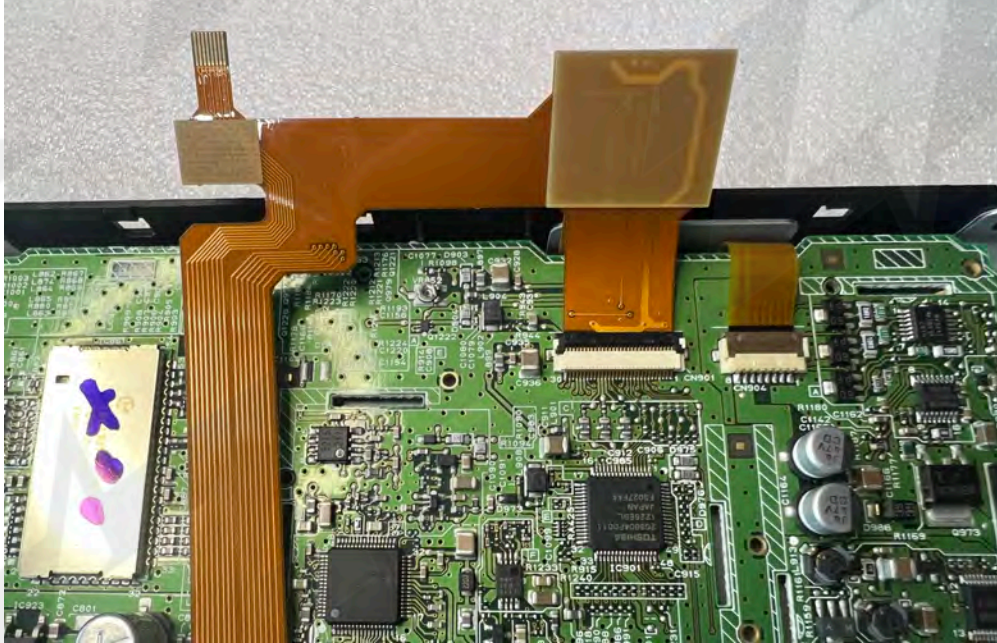
3. Using a small flathead screwdriver, carefully pry all clips (while applying pressure to remove screen) around the plastic radio face. The entire front LCD panel and button panel is connected vis ZIF connectors only (no ribbons to the radio chassis).



4. Lay the front panel assembly down (face down) on a soft mat. Disconnect (2x) ribbons shown.

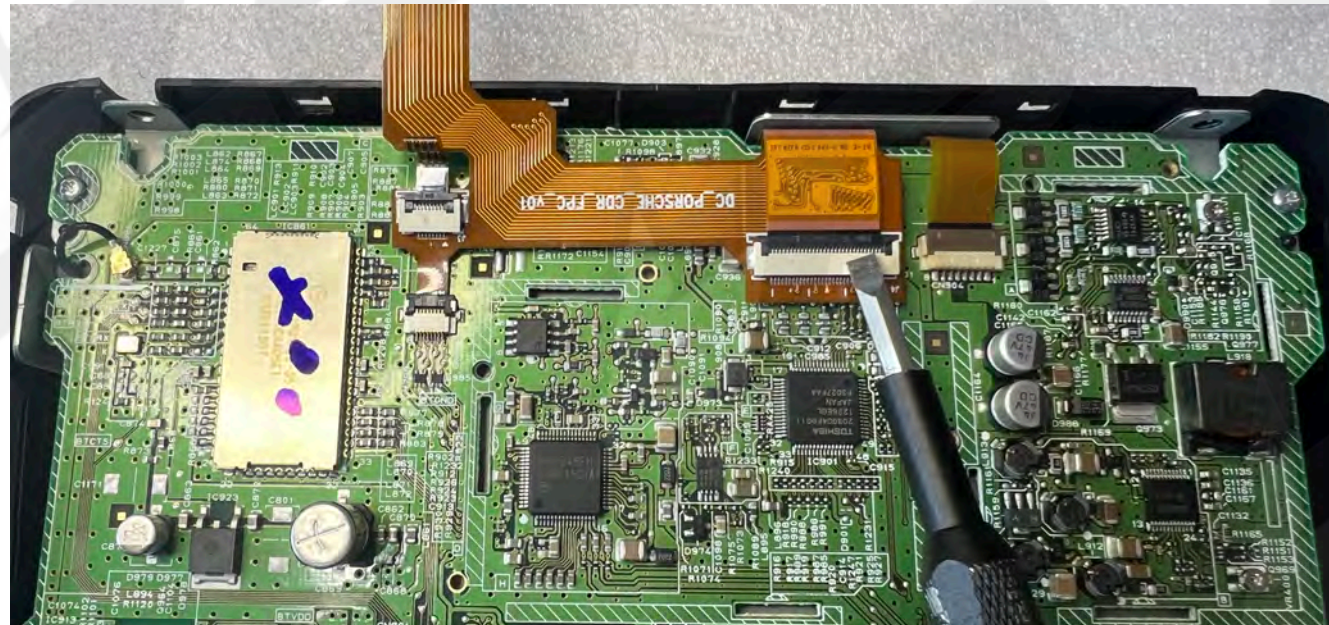


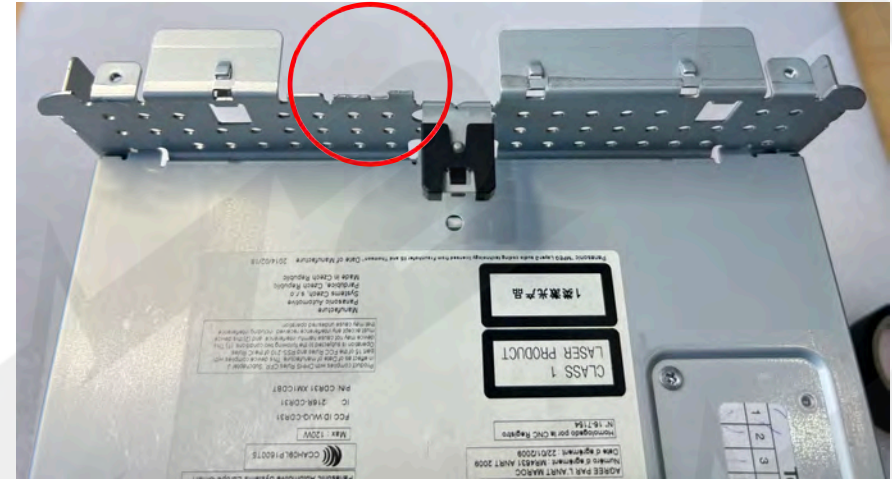
5. Orient the provided modification ribbon like shown below. Connect the wider ribbon into the wider connector as show. **Make sure the pin-side faces down on this step.**



6. Carefully and slowly (do not tear ribbon), flip the ribbon over such that the smaller touch-ribbon side lines up with the OE 4-pin touch connector. **Once again, the pin-side of the 4-pin ribbon must face downwards.**

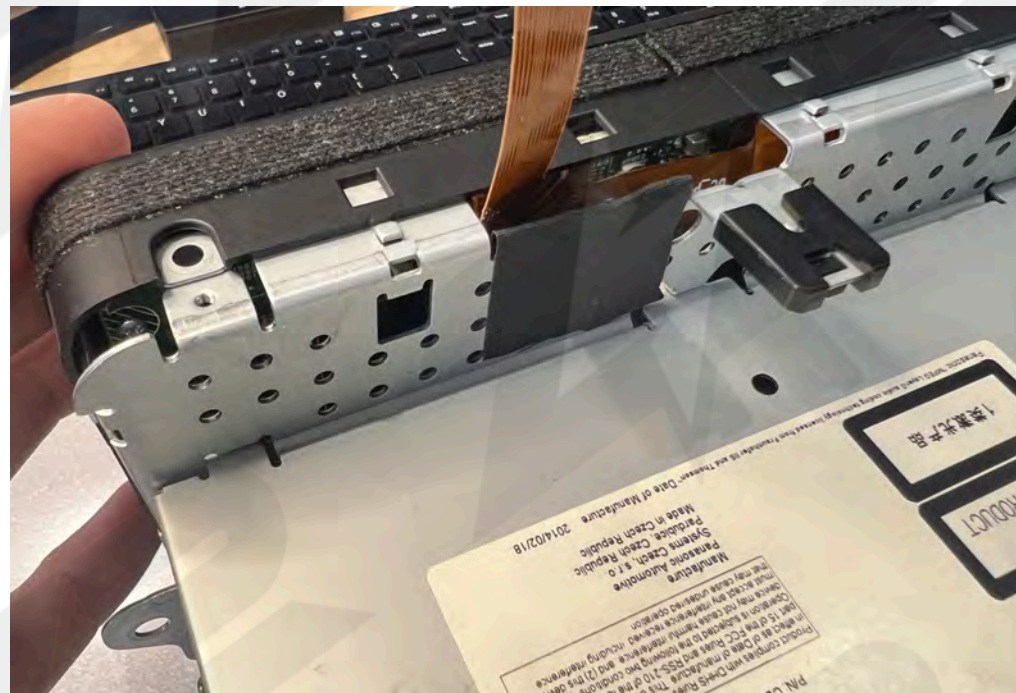
7. Once the Z22 ribbon is connected to the board, connect the leftover OE ribbons back to the Z22 ribbon. When this step is completed, it should look like picture here (right)





8. Using pliers (or similar method), cut off 1 metal tab from the radio chassis mount as shown.

9. Using cloth tape (or similar method), lay over the serrated edge from tab removal (step 8) to protect the ribbon. Be very cautious when lining up the screen face to the ZIF connectors (there are alignment pegs towards the middle to help). Also pay close attention to the exiting ribbon when connecting so as to not pinch/sever anything.



10. Route the ribbon like shown leaving slack along the way. Tape down as you feel necessary to route to the back side of the radio.



11. Connect the provided **Touch/Video PCB Module** to the back side of the radio like shown using the double-sided tape. It is best to leave a 1/4" of space between the left and bottom edge for ease of installation back into the sub-dash.

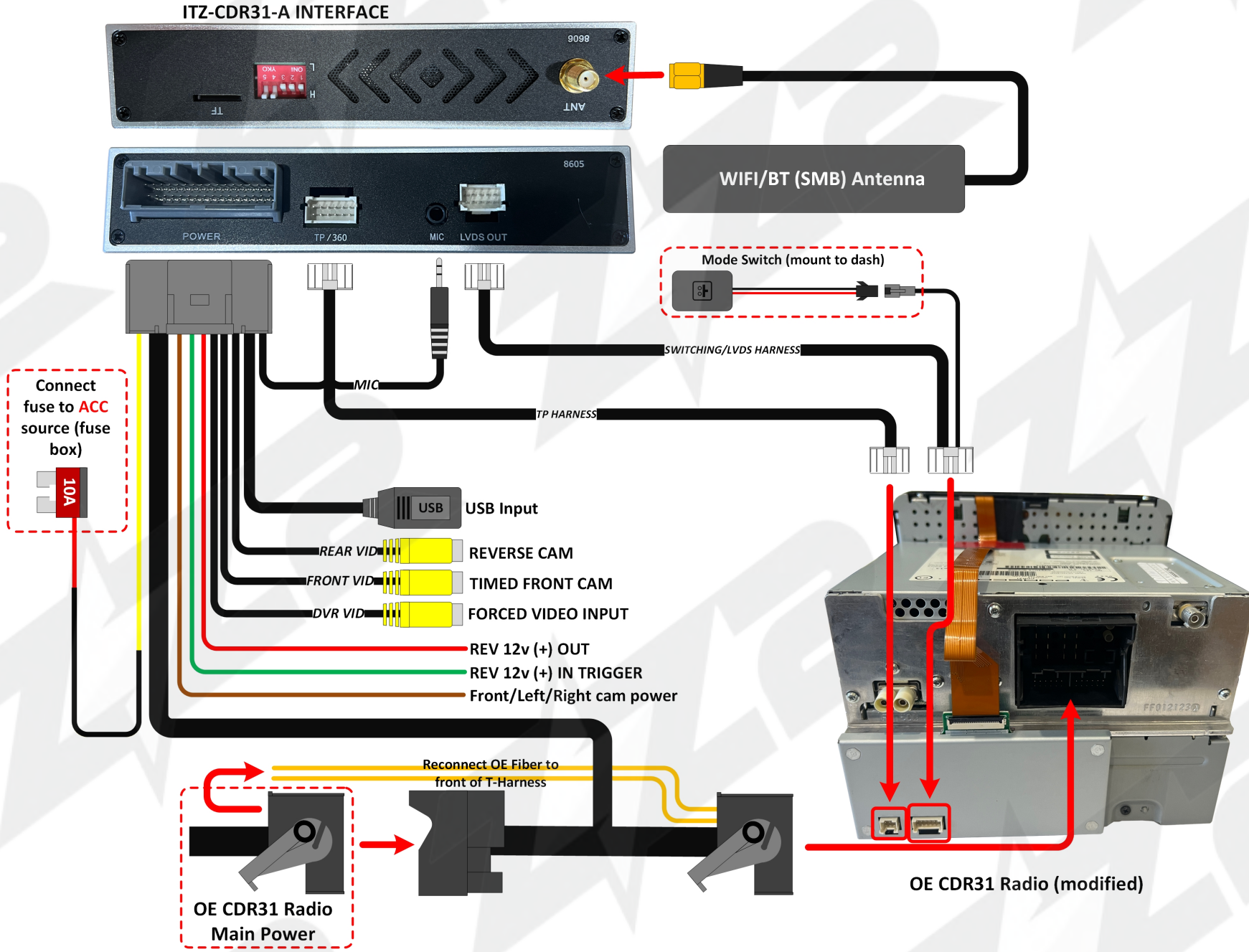




CDR31 Installation Diagram

Notes:

- The radio must be in 'AUX' mode in order for audio playback through the OE speakers.
- Make certain the OE Fiber-Optic cables are removed from the OE radio plug and moved to the radio side of the T-Harness.
- If using (green) reverse wire trigger, 'Reversing Mode' must be set to '12V Active' inside Car Setting menu.
- If adding Aftermarket camera, 'Reversing Camera' must be set to 'Aftermarket Camera' inside Car Setting menu.





DIP Switch Settings



1	2	3	4	5	Screen Size
OFF	OFF	OFF	OFF	OFF	CDR31

Disconnect power before adjusting dip switches.

User Operation

All CarPlay/AA/Interface commands are performed on the touch screen for CDR31.

Switch IN and OUT to OE mode to interface by pressing and *holding* the provided external switch (below)



Controlling CarPlay/Android Auto is used fully via the touch screen. *NOTE: If after installation there is a problem with touch response, press and HOLD the screen for 12 seconds to calibrate touch screen.*

ATTENTION: RADIO MUST BE ON AUX MODE TO HEAR AUDIO FROM CARPLAY THROUGH THE SPEAKERS

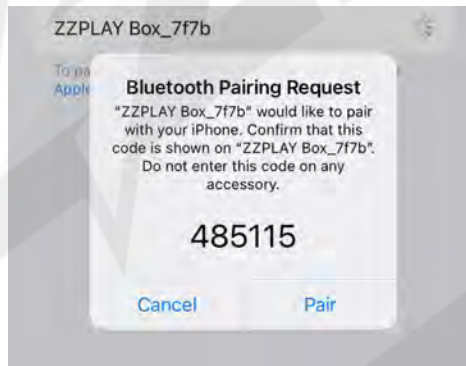
• How to connect to Apple CarPlay / How to setup Bluetooth Phone Calls



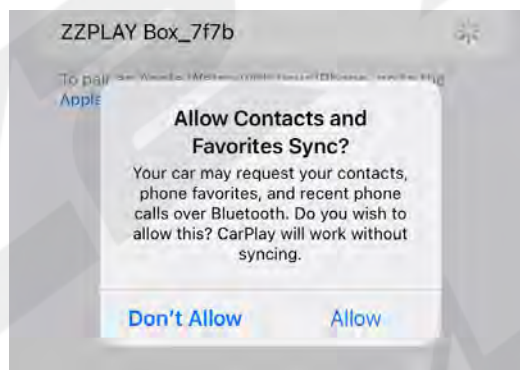
1. If you would like to use a cable to connect your iPhone, please use a certified Apple cable.
2. If you would like to use a wireless connectivity, please follow the next steps.
3. Before pairing the iPhone with the system, please make sure you do a "hard reset" on the phone in order to prevent any malfunction. (Check phone manual/online)
4. Once you are done with the previous step go to Settings > Bluetooth and the phone should be able to find a Bluetooth device called ZZPLAY***** under the Other Devices.



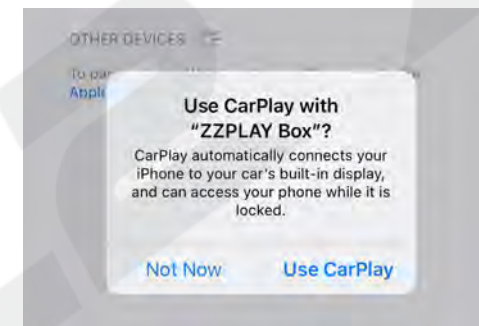
4. Select ZZPLAY***** and a Bluetooth Pairing Request will be displayed on the screen with a code. Select "PAIR".



5. Right after the Pairing notification a new request to Sync your contact with the car will be displayed. Select "ALLOW" in order to have caller ID and access to your contacts through CarPlay.

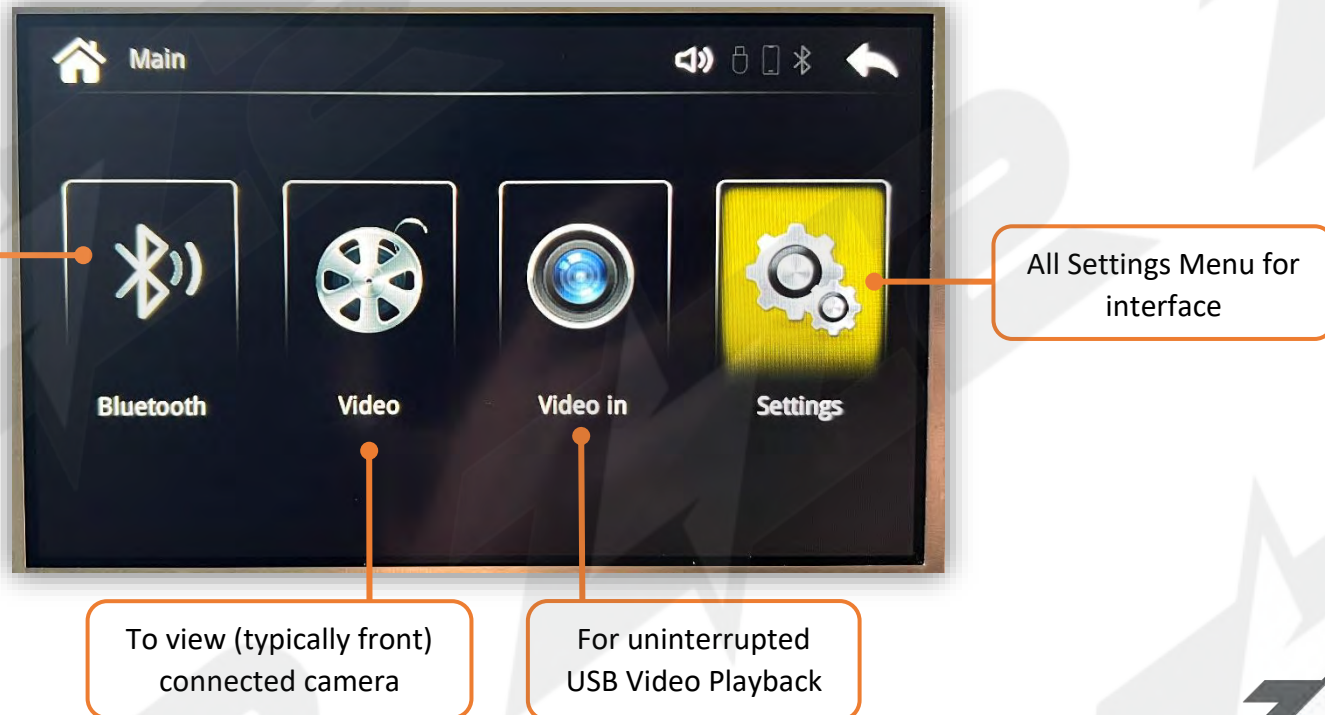
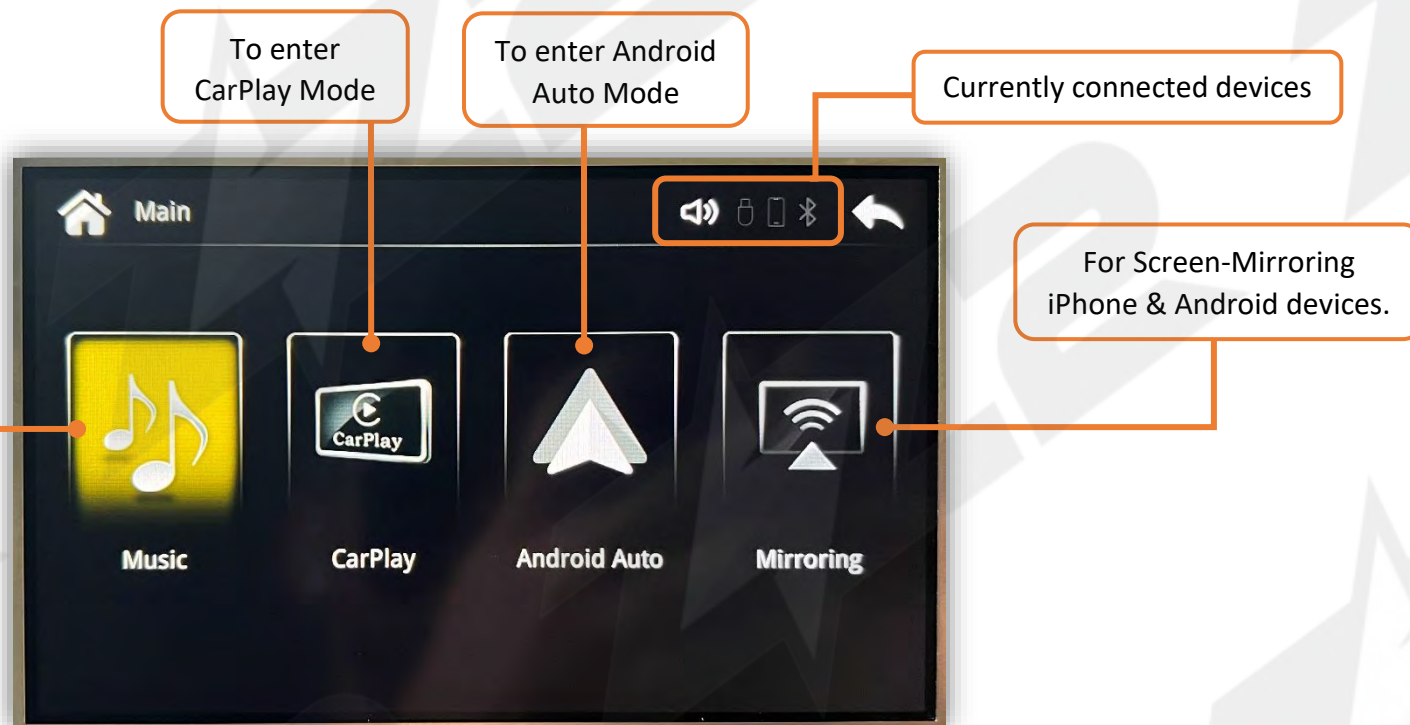


6. A notification asking for a permission to connect your iPhone to the car even when the phone is locked will pop up. Select "Use CarPlay" and the CarPlay main screen should show up on the factory radio screen.



7. When the phone is connected and paired properly, the screen will automatically switch to CarPlay. Once you are in CarPlay mode, if ever necessary, select the ZZ2 app to go to the interface's main menu.

ZZPLAY Interface Main Menu



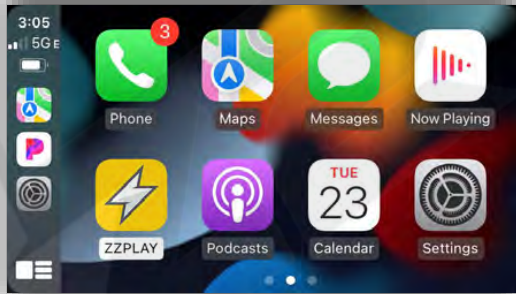
ZZPLAY Interface Settings Menu



The next few pages overview the ZZPLAY interface, navigating settings and explains entering/exiting all menus. There are (2) menu systems that exist outside of the OE radio system: Carplay (or Android Auto) menu and the ZZPLAY Interface Menu. They operate independent of each other (the ZZPLAY Interface menu will function regardless of whether or not a phone is connected to the module). Settings found inside Carplay will only affect CarPlay functionality. Settings for the ZZPLAY Interface control things like reverse camera settings, audio output control settings and other vehicle/interface-specific parameters.

CARPLAY

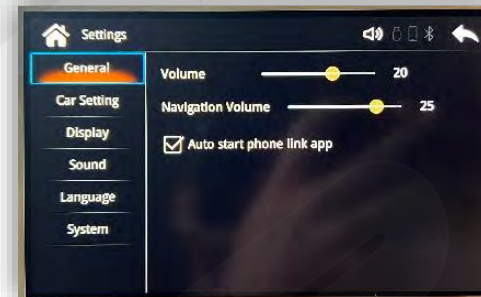
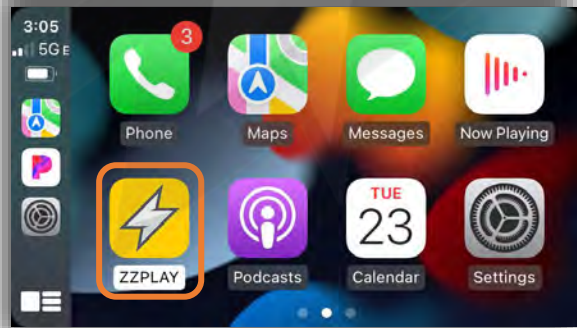
ZZPLAY INTERFACE MENU



Selecting 'Settings' will bring you to the ZZPLAY Interface Setup Menu with all options pertaining to the specific vehicle and install.



To enter the ZZPLAY Interface Menu from the CARPLAY system, locate the ZZPLAY tile and select it. If there is no phone connected, simply using the activation button (which normally brings you into CARPLAY mode) will enter you in the ZZPLAY Interface Menu.



General:

Allows adjustments for global volume control and navigation (specific) volume control output. Also there is an option for auto-pairing the user's handset.



Car Setting:

Allows adjustments for camera(s) and MIC options. **These options are specific to the how the interface handles camera triggers and types (data vs analog wire, OEM vs aftermarket etc).** A few other vehicle-specific settings can be found here as well.

ZZPLAY Interface Settings Menu



Display:

Allows adjustments for brightness, contrast & saturation



Sound:

Allows bass, mid & treble adjustments for audio output.



System:

Shows hardware & Software information.

Factory Mode:

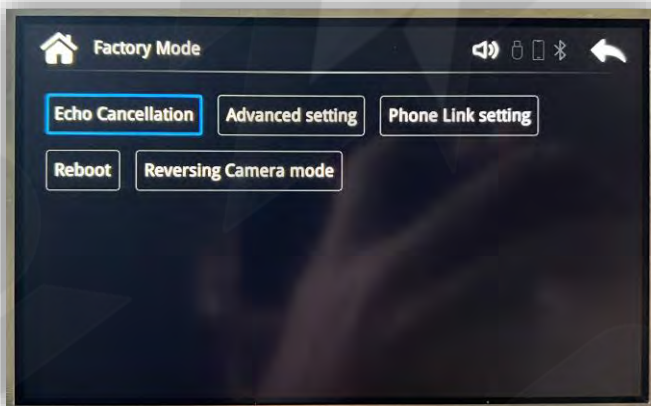
Echo Cancellation: Run this to get the best possible performance out of the provided microphone (if equipped)

Advanced Setting: Stores settings that do not need adjustment at this time from end user.

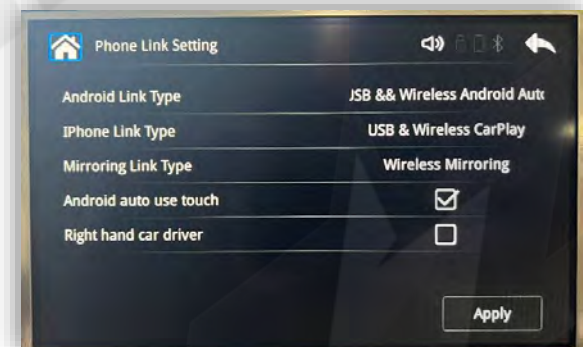
Phone Link Setting: Use these settings if you want a specific type of handset (iPhone vs Android) to be wired only / or wireless only. Helpful for when 2 handsets are in the vehicle at the same time.

Reboot: press to reboot the ZZPLAY system without turning vehicle off.

Reversing Camera Mode: typically does not need adjustment, but adjusts video standard for connected cameras.



Phone Link Setting



ZZPLAY Interface Settings Menu



Question: *I can't hear any audio from the CarPlay/Android Auto system.*

Answer: Your OE system must be resting on AUX mode in order to hear any sound from the kit. This includes during phone calls. NOTE: Some systems AUX input are not labeled 'AUX', it may be labeled 'Media Interface' or there may be an audio conversion to the vehicle's USB input. Check with your installer for more information.

Question: *I'm hearing reports of a lot of echo or delayed echo on audio during a phone call. Why is this happening and how can I eliminate this?*

Answer: This happens because we are using the OEM AUX input for audio, and the AUX path travels through the OEM amplifier, where there is active time-alignment & processing on this audio channel. There are a few ways to fix this problem, and there are Pros & Cons to each choice:

1. Use the OE Bluetooth system to handle all phone calls, and answer all incoming phone calls **from the steering wheel, always. To dial out using this method, you must use SIRI or voice command activation (typically hold control knob down for 4 seconds). Some vehicles, when using the CarPlay/AA control in recent calls, the system will still use the OE Bluetooth to handle phone calls, but not all vehicles will operate this way.** NOTE: This method will sound the best for both parties on the phone call - to use this method, you MUST be paired to the OEM Bluetooth system simultaneously with the ZZPLAY unit. **PROs:** sounds the best, and regardless of what audio source you're currently on, using this method will switch to a 'phone call state' and return you back to the source you were on (FM, AUX, etc) once the call is ended. **CONS:** Your phone must connect to both the ZZPLAY unit and the OE Bluetooth for every drive, and the reliability of these connections happening properly upon every startup will be lower (only about 90% vs 100%).
2. Use the built-in 'AEC Auto Setup', or 'Call Quality Test', or 'Echo Cancellation' tests to adjust MIC settings for the microphone input of the ZZPLAY unit. These tests are found in the ZZPLAY setup menu typically under 'Audio' or somewhere similar. Some vehicles require a level of adjustment which will never be achieved, in these cases use the OE Bluetooth system (see choice 1). **PROs:** If this method works, it is the most reliable way of using the kit. **CONS:** You MUST be on AUX in order to hear the person you're speaking with. IE: if you use FM or SAT, while using the visual from CarPlay (maps, for example) and a phone call comes in, you must switch to AUX mode before you will hear the person when you answer the call. This is very cumbersome which is why we suggest to stay connected to the OE Bluetooth and allow the car to handle the phone calls.

Question: *Sometimes my phone won't connect lately / Sometimes when it connects the screen goes black / Sometimes CarPlay kicks me out back to the interface menu.*

Answer: For iPhone users, you must perform a 'Hard Reset' on the phone in use on average twice a month to clear certain cache and reset the processors (this will not wipe any data). Google search 'Hard Reset iPhone 13' (or whatever version iPhone version you have) and perform that task. After this is done, you will see a difference in speed and reliability (of pairing/connecting).

Question: *Incoming text responses from SIRI are silent on CarPlay. It mutes the audio but I don't hear the read-out.*

Answer: This often happens for 2 reasons: The iPhone needs a hard-reset (see previous question), or the phone is connected to the vehicle's OE Bluetooth for both **phone calls & audio (and the text read-outs are being sent to the vehicle BT source - you're on AUX source).** You want to be connected to the vehicle for phone calls ONLY - for iPhone the only way to make this distinction is to adjust the phone setup on the OE radio side. Find your phone (name) in the Bluetooth or Phone setup in the OEM radio settings and disconnect as an audio player. NOTE: *not all vehicles have this option, but it seems to happen mostly with cars that do have this option (Lexus, etc).*

Question: *Using Android, I cannot get the phone to reliably connect wirelessly (or at all).*

Answer: Android phones are more finicky and iPhones with their wireless connectivity. Make sure the OS is fully up-to-date. Clear the cache on the Android Auto application. The Android OS must be at least version 11. Some phones (TCL, Motorola) seem to have protocols that don't play nice with every system. If you run into this, use a good USB-C cable for the Android Auto Connection instead.



support@zz-2.com

929-220-1212

Toll free: 877-241-2526

Extension 2: Tech Support

Agreement: End user agrees to use this product in compliance with all State and Federal laws. ZZDOIS LLC dba ZZ-2 is not to be held liable for misuse of its product. If you do not agree, please discontinue use immediately and return product to retailer. This product is intended for off-road use and passenger entertainment only.