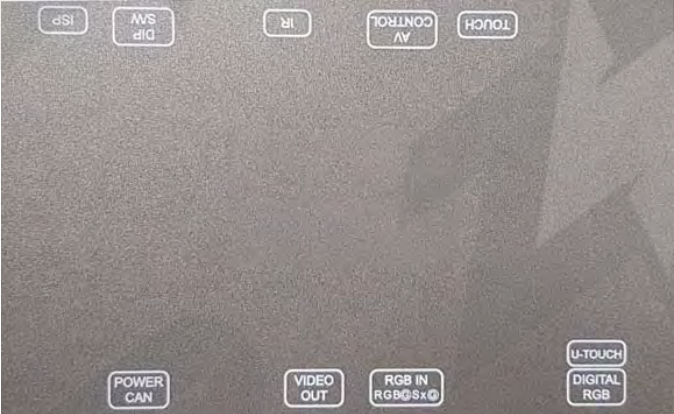




IT4-MINI18

2018 MINI 6.5"

MAIN UNIT OF INTERFACE

| <div data-bbox="152 352 192 392">1</div>  <p>2018+ MINI 6.5\" IT4-MINI18</p> | | | |
|--|------------|------------|--------|
| Car Brand | Model | Year Range | System |
| 2018+ MINI 6.5\" Sealed Radio (non-touch) | IT4-MINI18 | 2018+ | |

COMPONENTS

| | | | |
|--|--|---|---|
| <p>1 MAIN UNIT</p>  | <p>2 MAIN CABLE</p>  | <p>3 HDMI CABLE</p>  | <p>4 IR CABLE</p>  |
| <p>5 SUB BOARD</p>  | <p>6 GENDER</p>  | <p>7 40PIN FILM</p>  | <p>8 50PIN FILM</p>  |
| <p>9 RGB CABLE</p>  <p>※ OPTION ※</p> | <p>10 REMOTE CONTROL</p>  <p>※ OPTION ※</p> | <p>11 AV GENDER BOARD</p>  <p>※ OPTION ※</p> | <p>12 AV IN/OUT CABLE</p>  <p>※ OPTION ※</p> |
| <p>13 AV GENDER CABLE</p>  <p>※ OPTION ※</p> | <p>14 Washers (4x large, 2x small)</p>  | <p>15 Touch Screen Overlay</p>  | |

DIP S/W

OFF : ↑ (UP) / ON : ↓ (DOWN)



6.5" MINI

| PIN | FUNCTION | DIP S/W SETTING |
|-----|-----------------|---|
| 1 | GPS INPUT MUTE | OFF : DO NOT USE GPS ON : USE GPS |
| 2 | Vehicle Setting | |
| 3 | NC | |
| 4 | REAR CAMERA | OFF : OEM CAMERA ON : AFTERMARKET CAMERA |
| 5 | NC | |
| 6 | NC | |
| 7 | Vehicle Setting | |
| 8 | ON | |

SPEC

1. INPUT SPEC

- 1 x Analog RGB Input(GPS system output)
- 1 x LVDS Input
- 1 x LVDS output
- 1 x CVBS(rear camera)
- 1 x CVBS(front camera or A/V)
- 1 x HDMI(USE FOR HDMI MODEL ST19FH)
- 3 x A/V Input(Option)

2. OUTPUT SPEC

- 1 x CVBS
- 1 x Audio L/R

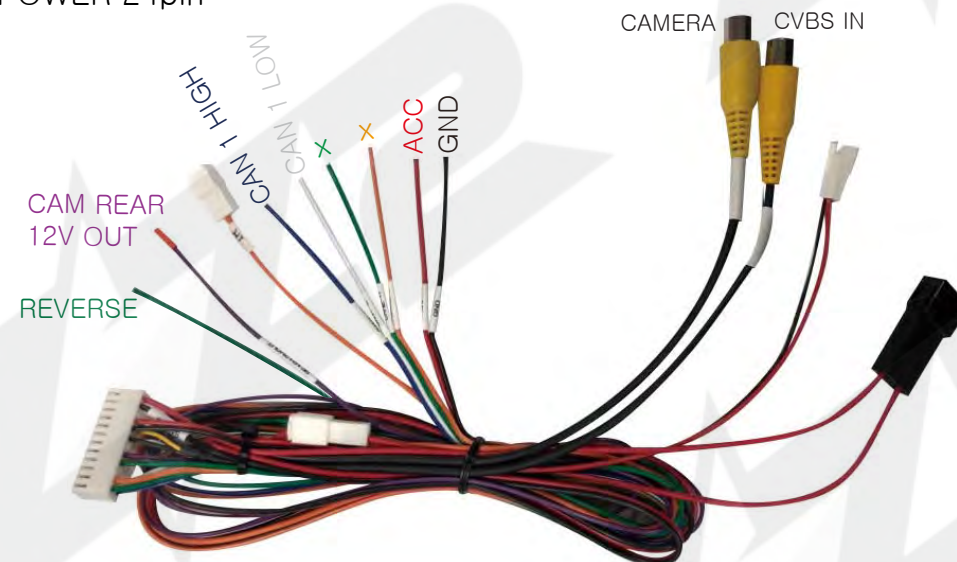
3. POWER SPEC

- Input power : 8VDC ~ 24VDC
- Consumption : 5WATT

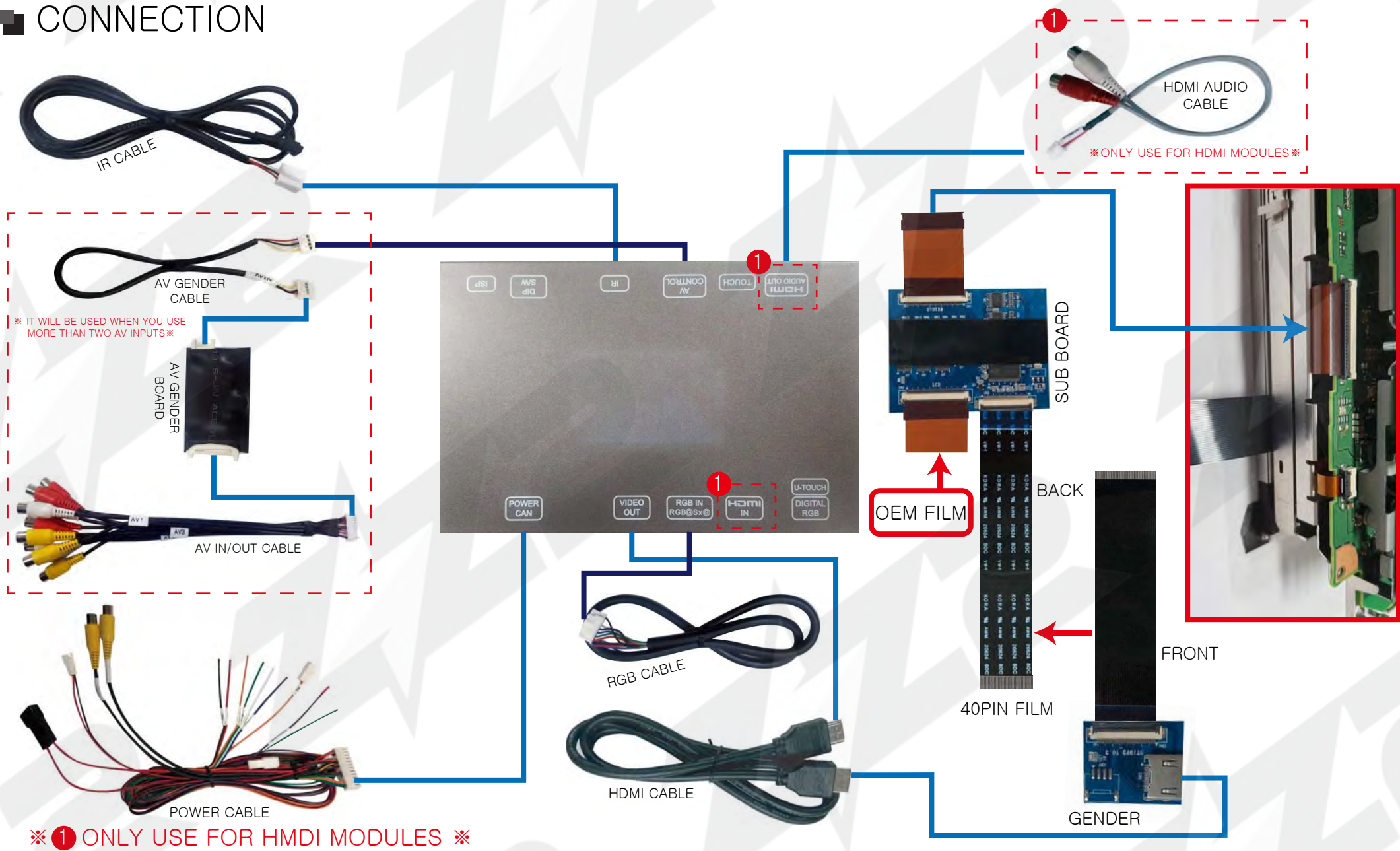
4. SIZE

154*98*20mm(Width*Length*Height)

5. POWER 24pin



CONNECTION





1. Using a straight pick (or similar), press in the center of (2x) release tabs (beneath radio surround) and remove.



2. Pull the circle trim outwards and set aside.



3. Remove (2x) Torx T20 screws.



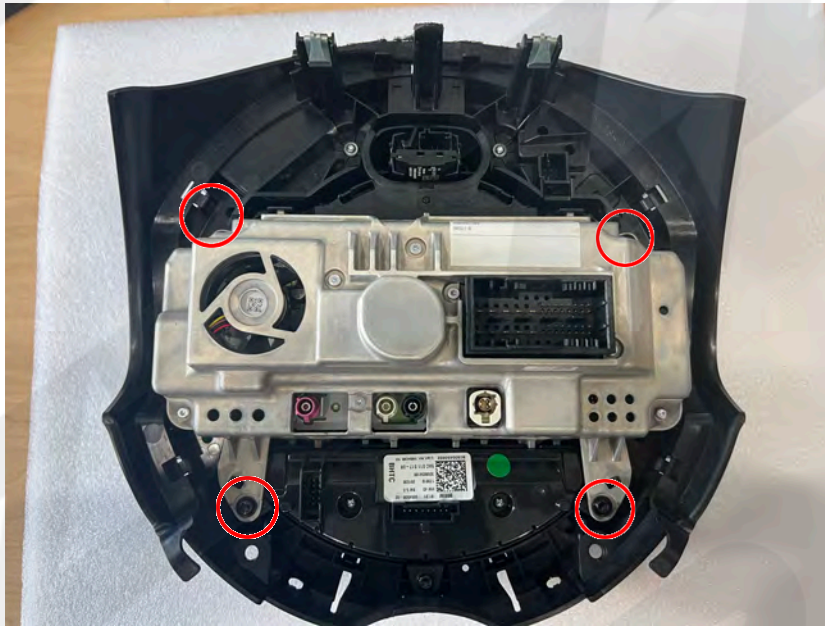
4. Using a plastic tool, pry and remove top vent.



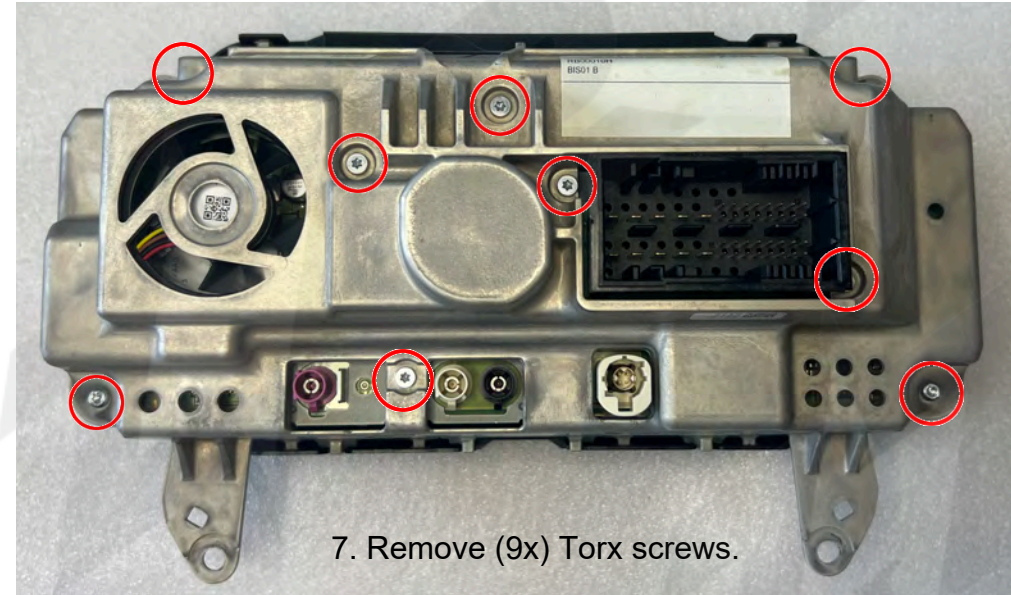
5. Locate center hole (circled), and using a Philips Head screwdriver (or similar), press the release tab downwards which secures the radio into the sub-dash. It takes a little effort to pull the radio outwards - it flips down from the top side.



6. Remove (4x) Torx screws securing radio into plastic housing. Remove radio and set housing aside.



7. Remove (9x) Torx screws.

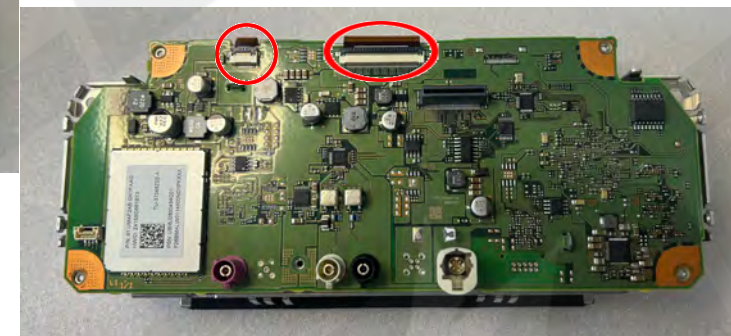


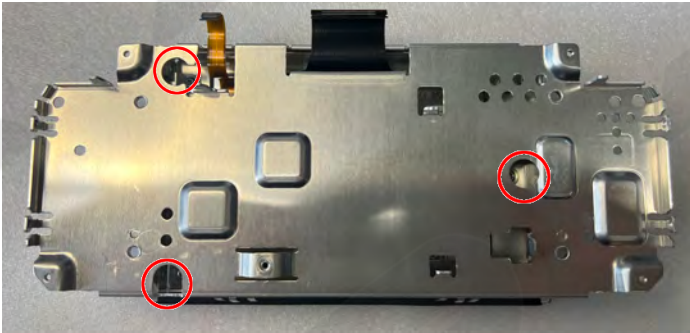
8. Remove 1st PCB layer, it is secured with a ZIF connector only. It pulls straight up.



9. Remove 2nd metal layer (with fan). Disconnect fan plug during this step.

10. Disconnect (2x) ribbons from the PCB by flipping up the connectors using a fingernail.

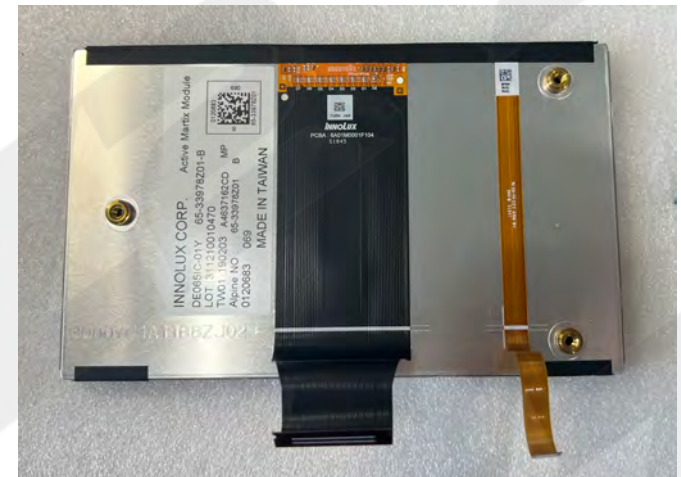




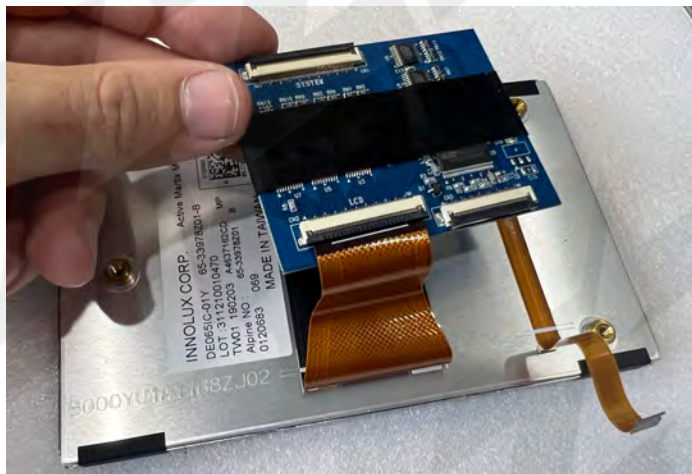
11. Remove (3x) Torx screws and pull the aluminum frame from the LCD assembly.



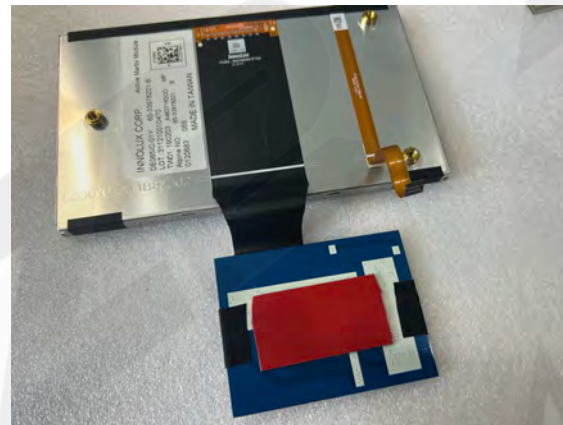
12. Using a saw or dremel tool, cut and discard the **center support (only)** to allow for the sub-board to be secured freely (future step).



13. Orient the LCD panel like shown.

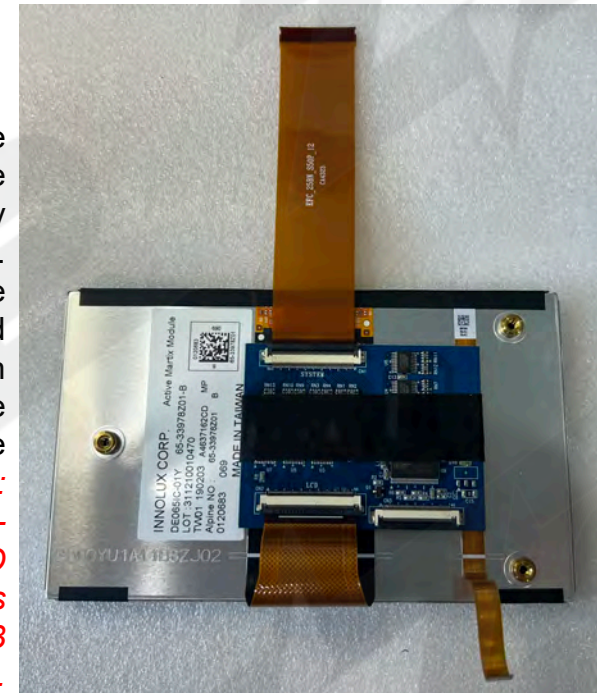


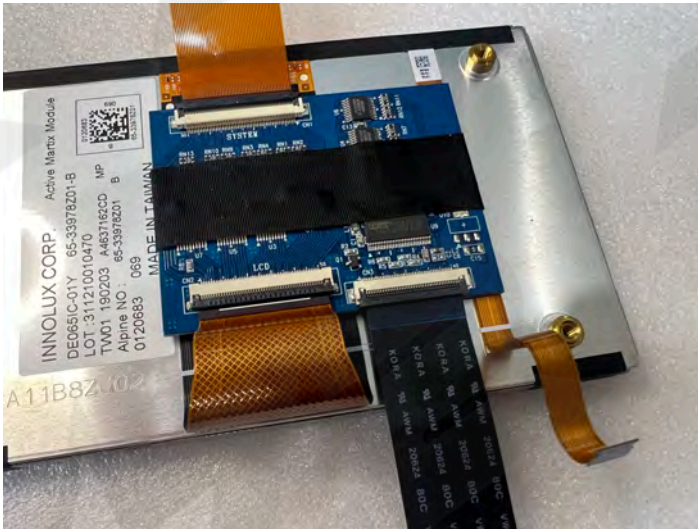
12. Connect the provided sub-pcb to the larger OE LCD ribbon. Make sure the ribbon is inserted fully and squarely.



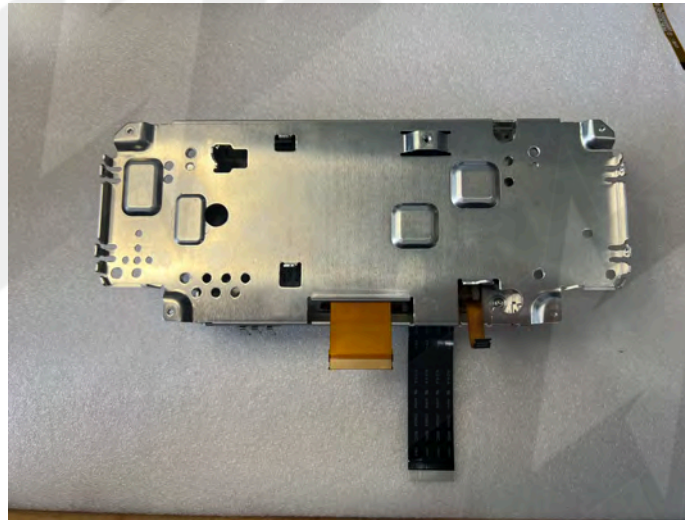
13. Connect some double-stick tape (not provided) to back side of sub-pcb to secure to LCD assembly.

14. Secure the sub-pcb to the LCD assembly like shown. Connect the provided (brown) ribbon to the opposite side of the PCB. **NOTE: the FLAT-CORNERED side connects to the PCB here.**

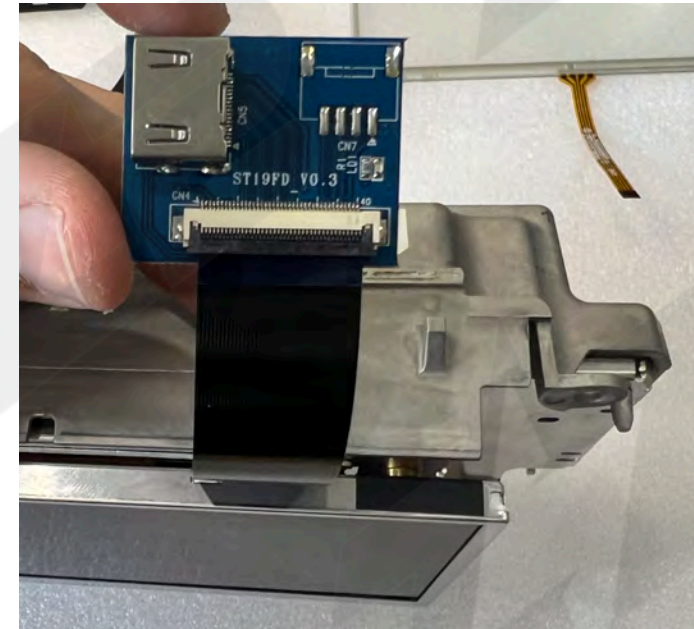




15. Next connect the provided (black) ribbon to the remaining FFC (flat-flex connector). **This ribbon must exit the radio chassis.**



16. Re-assemble the radio, beginning with the aluminum frame, paying careful attention to the black ribbon. route the black ribbon to the outside of the radio chassis. Route the brown ribbons (ZZ2 & OE) out the appropriate holes in the aluminum sub-frame and connect to the Main PCB carefully.



17. Connect the (2nd) sub-pcb with HDMI connector to the black ribbon. Make sure this



18. Using a piece of double-stick tape (not provided), secure the (2nd) sub-pcb to the radio securely. Clean the spot first to ensure it sticks.

STOP: DO NOT CONNECT FRONT FRAME TO LCD/RADIO YET, SEE NEXT PAGE FOR VITAL FRAME MODIFICATIONS.

Continue to next page for radio frame modification.

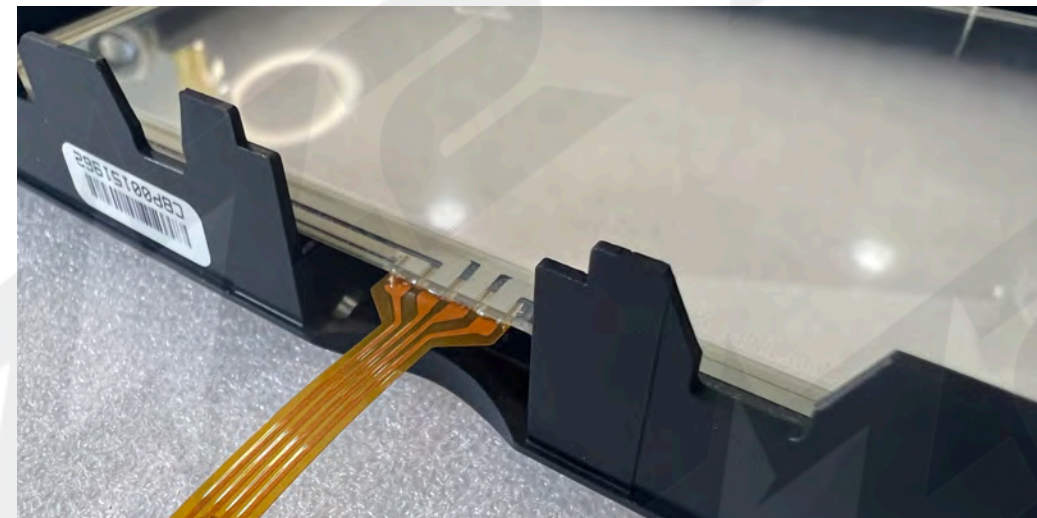


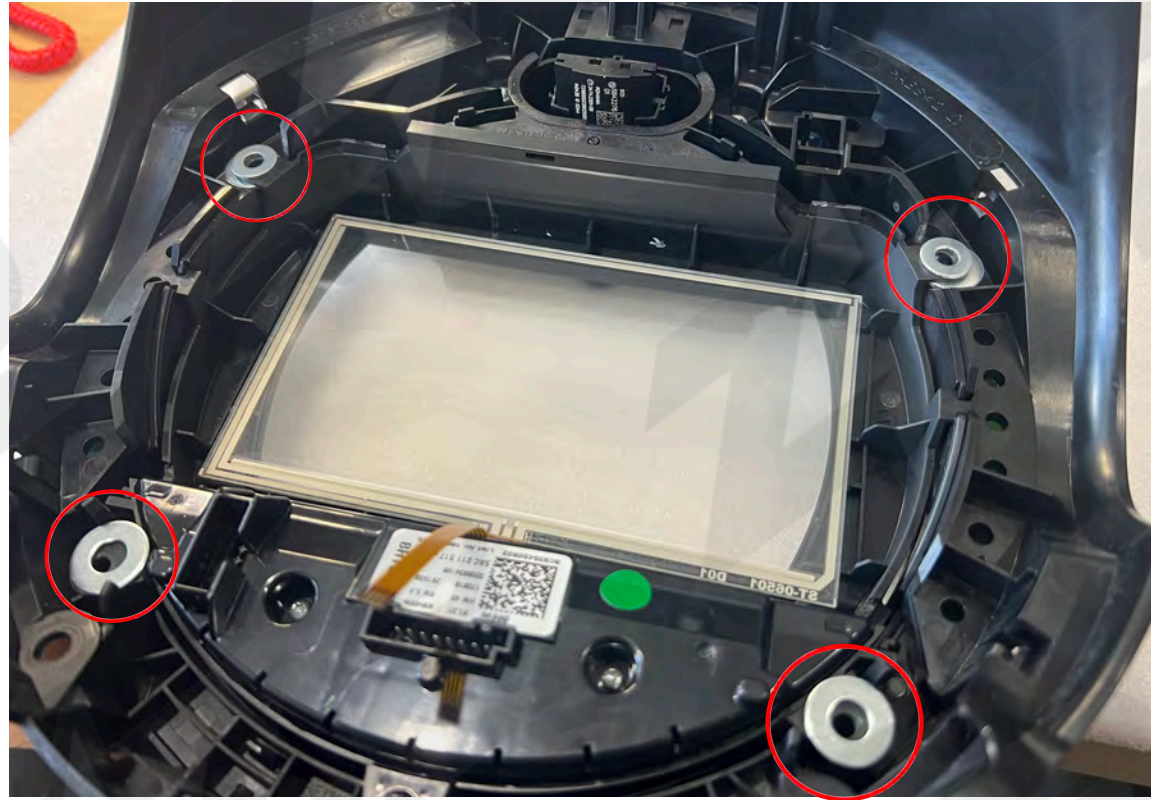
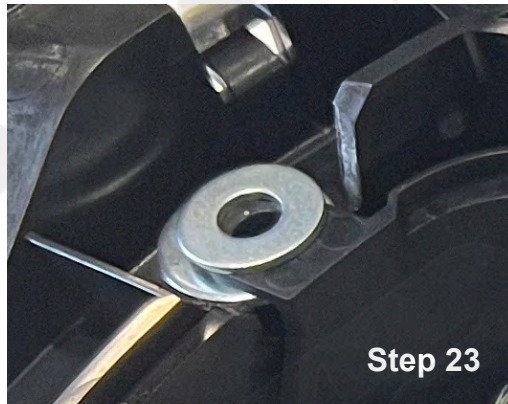
19. On the top (inside) of the black frame, you must remove (cut away) *one plastic rib which would otherwise pierce or damage* the black ribbon which has been added. Use side-cut plastic cutters or a dremel to accomplish this carefully.

20. Cut away the tab clips which normally secure the front black frame to the radio assembly/LCD unit. This must happen to allow clearance for the added thickness of the touch-screen overlay and will not affect how the radio secures into its (larger, circular) housing (the 4 Torx screws will still be used).



21. Lay down the provided touch-overlay into the black modified front plastic frame.
NOTE: the touch-overlay has a back side and a front side. The FRONT of the overlay (what you will touch) must face the driver. The (4-wire) ribbon must be towards the outside (closest to the driver) when complete. See picture (right).





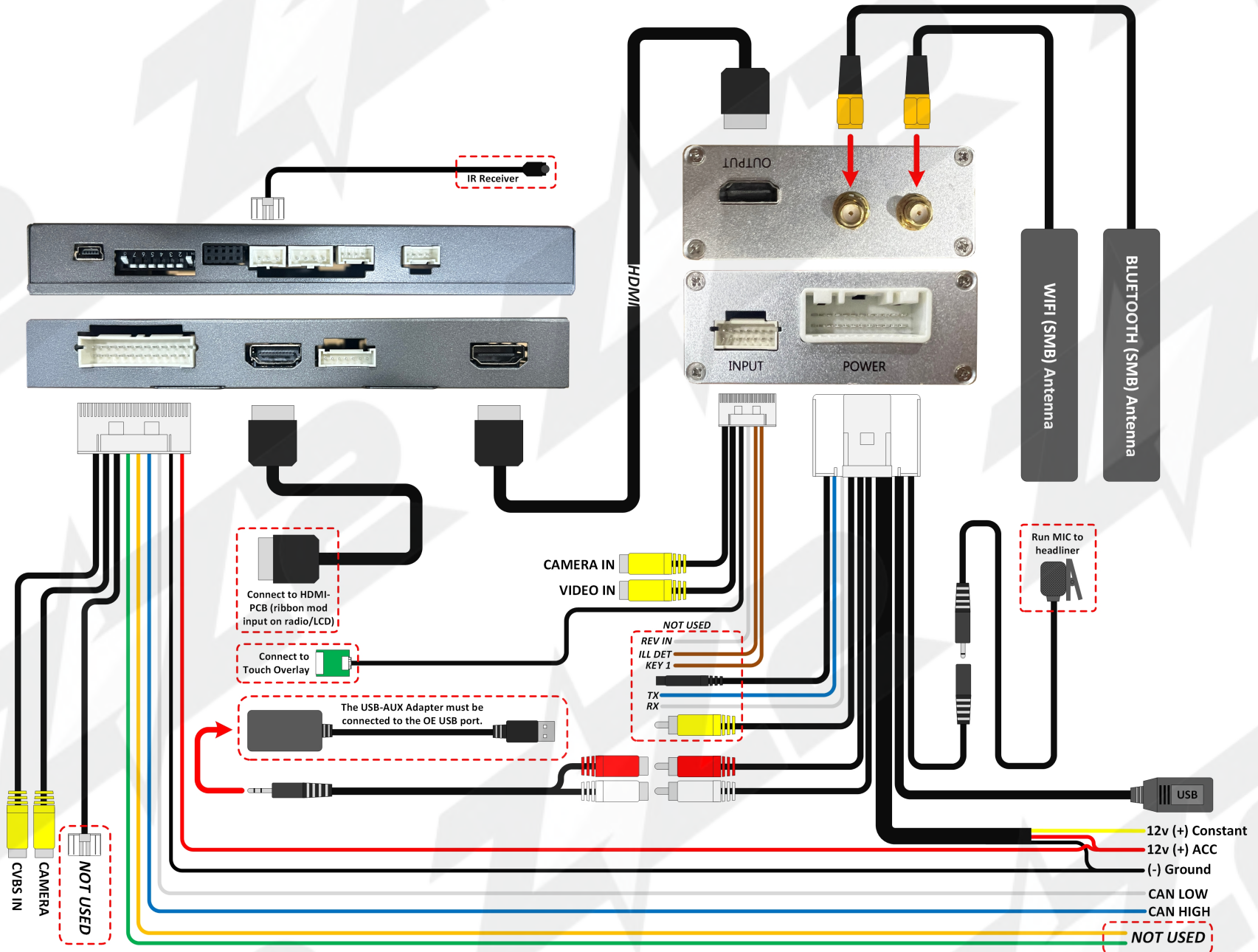
22. Lay the frame, with the overlay into the full circular radio housing. With touch-screen overlays, it is vital to not pinch the screen whatsoever otherwise the functionality will be intermittent (or may not work at all). To compensate for the screen clearance, use the washers provided. You may need to shave some plastic away for clearance.

23. On the top side, use (2x) larger washers in between the circular radio housing and the radio frame (like shown above). Once the frame is put in, add (2x) of the smaller washers (like shown above).

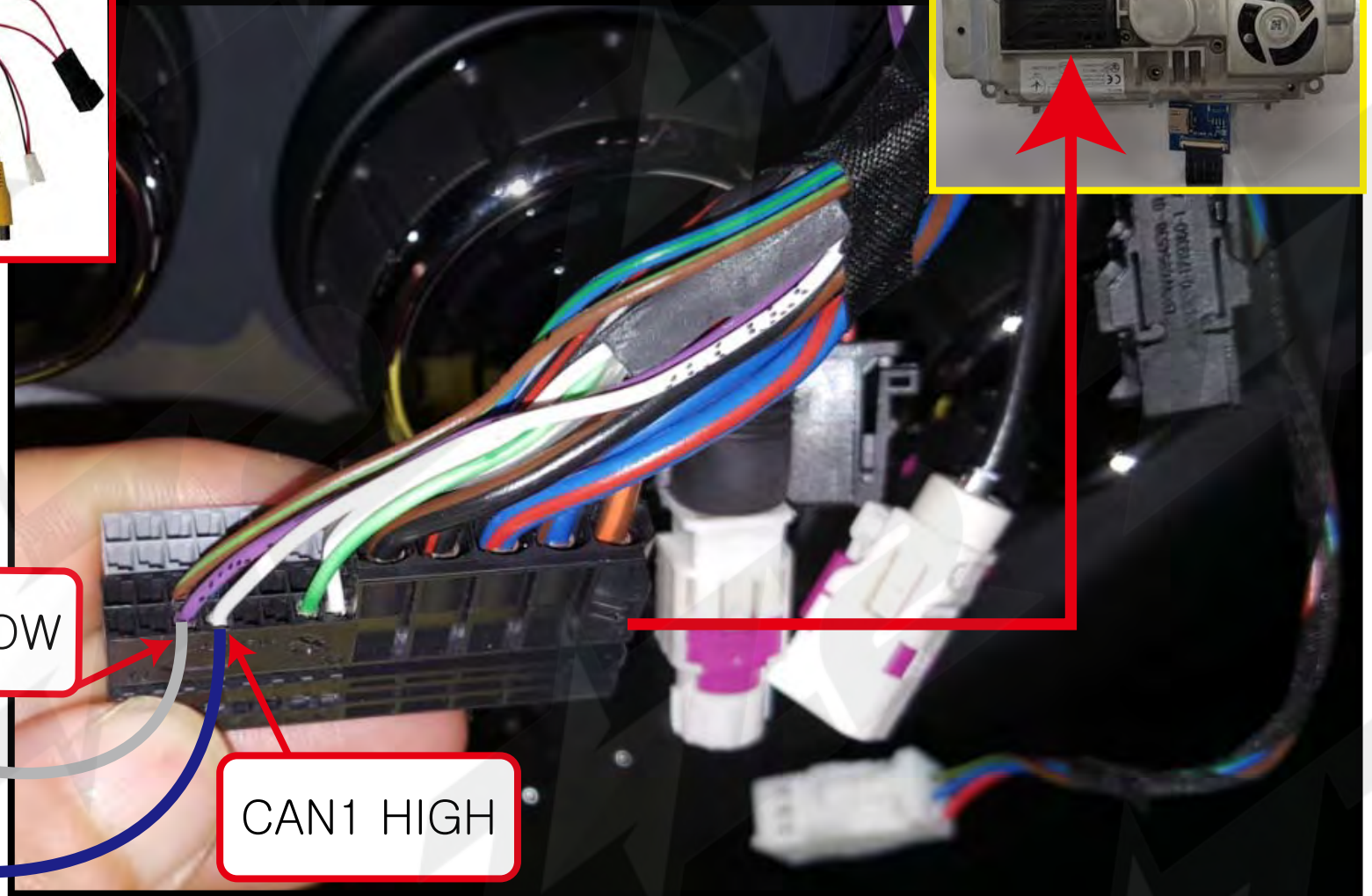
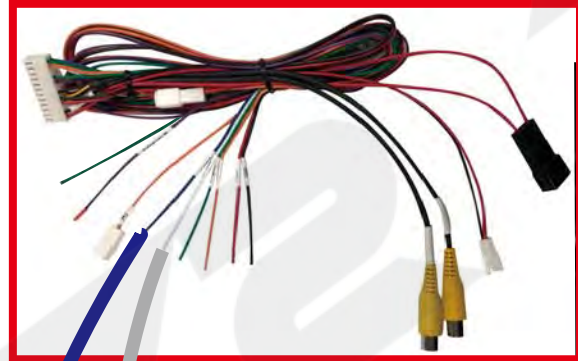
24. On the bottom side of the radio, only (2x) larger washers are required before the radio/LCD can be set into place.

NOTES:

- Not all connections will be used.
- If connecting an aftermarket camera, use the 'CAMERA' RCA from the video module (unit with dip-switches), not the CarPlay module.
- Once all connections are made, connect IR Receiver and with remote press 'OK' (4x) then POWER. Set 'NAVI' type to 'HD-G2'.
- If touch panel is not responding:
 1. Verify panel is facing the proper way forwards
 2. Verify ribbon side is not flipped upside down to small green PCB
 3. Verify panel is not being pinched



HOW TO CONNECT CAN1 HIGH/LOW

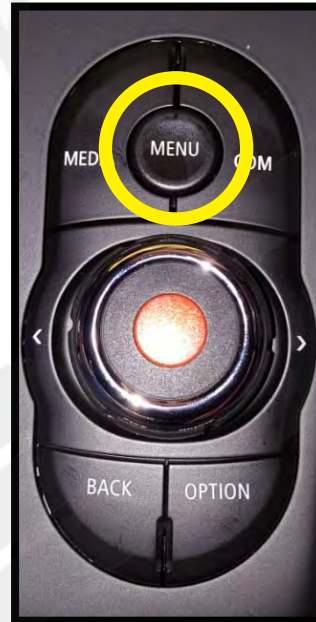


CAN1 LOW

CAN1 HIGH



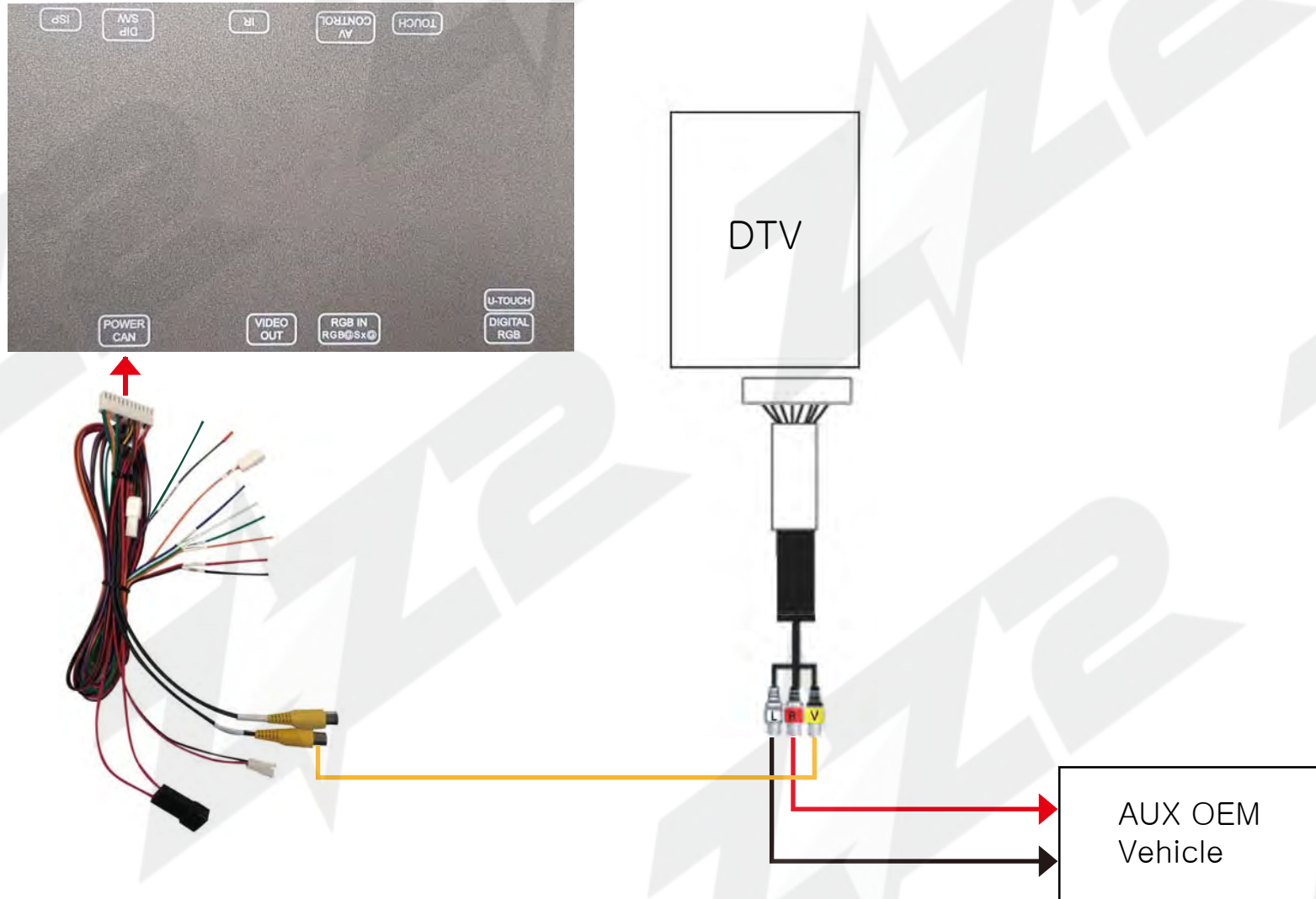
■ HOW TO SWITCH MODE(2018 BMW MINI 6.5”)



PLEASE HOLD  BUTTON 2S TO SWITCH MODE

OEM → GPS → HDMI → AV1 → AV2 → AV3

HOW TO CONNECT VIDEO AUDIO WHEN YOU ONLY USE ONE AV INPUT



HOW TO CONNECT VIDEO AUDIO WHEN YOU USE MORE THAN AV INPUT

