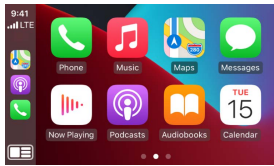
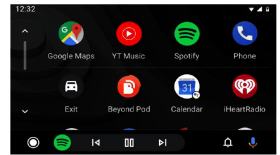


# IT3-MMI3G-Q3



 Apple Car Play  
 Android Auto



# ZZPLAY

Wireless CarPlay / android Auto for Audi Q3  
equipped with the 3G MMI system (non-NAV)



# 1 – Contents:



• ZZPlay Interface



• Quadlock Plug and Play



• USB/RCA inputs



• LVDS cable



• Flat Cable 1



• Flat Cable 2



• Sub-Board 1



• Sub-Board 2



• Stand-Off Mounts



• Audi AMI Cable




• FAKRA Antenna



• Manual

## 2 - Dip Switch

**NOTE: Remove CAN plug before adjusting dip switches.**

Modelo	Ano	Tela	Rádio	Dip Switch
Q3	2014 - 2018	6.3"	MMI3G	

### *Other configurations:*

Dip Switch	Função	Posição
Dip 7	Vehicles with the PARK button*	OFF
	Vehicles without the PARK button*	ON
Dip 8	Vehicles with factory Bluetooth	OFF
	Vehicles without factory Bluetooth	ON

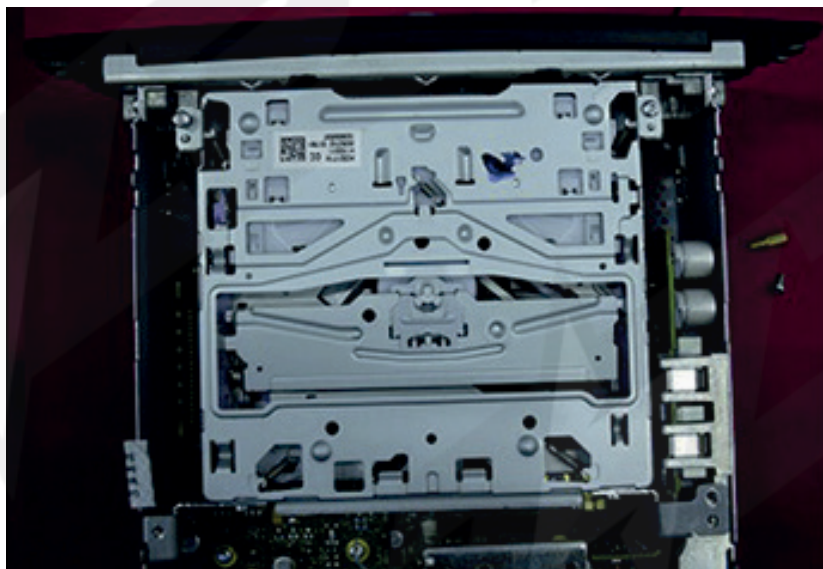
**\*Note: Parking button for reference:**



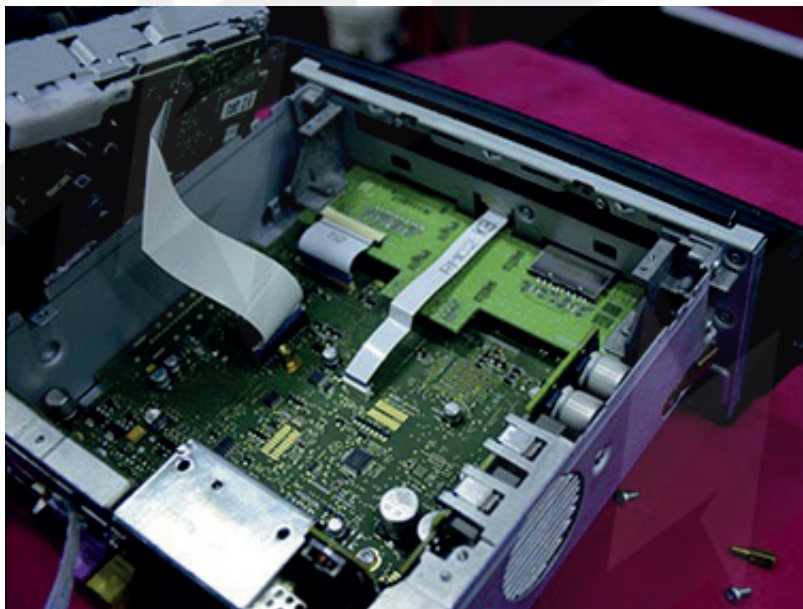
### 3 - Radio dissassembly & PCB installation



Remove all screws and open up the radio



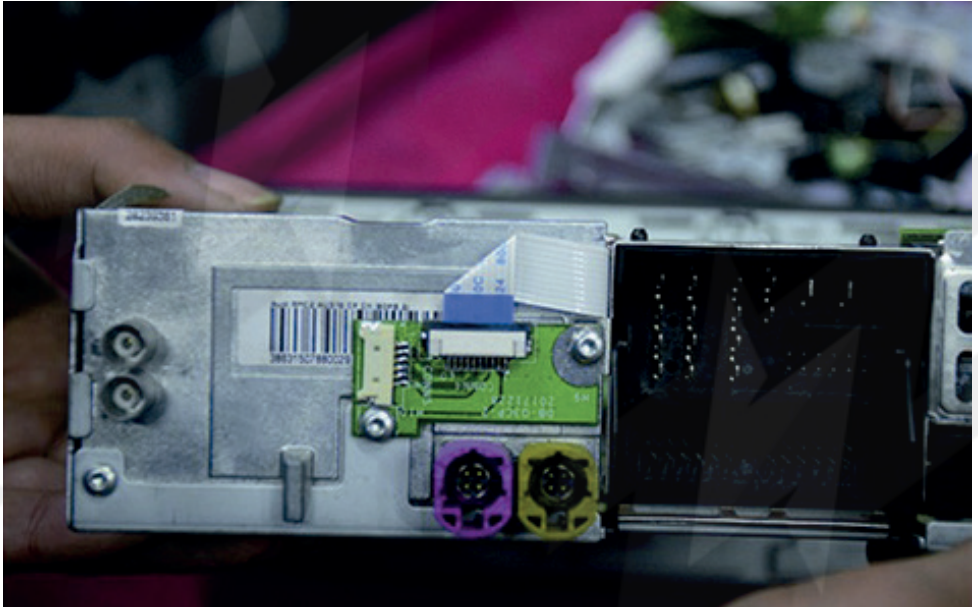
Unscrew the CD reader



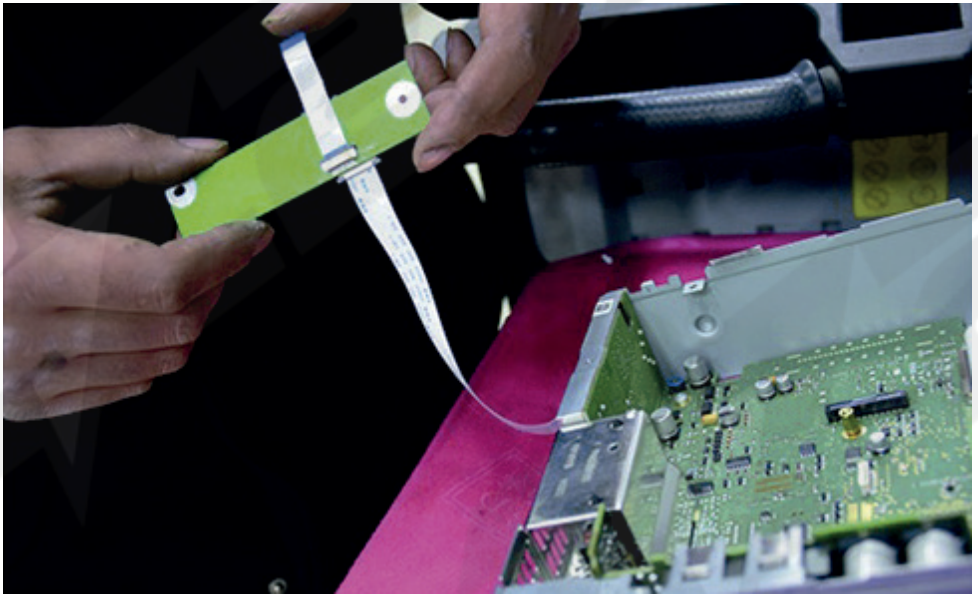
Remove the CD reader



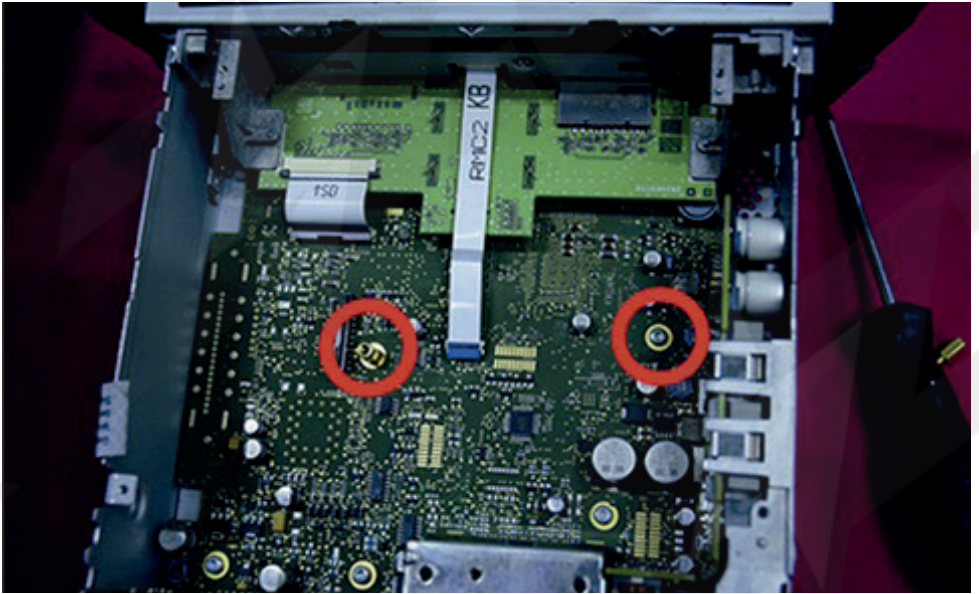
Remove the ribbon cable from the CD reader



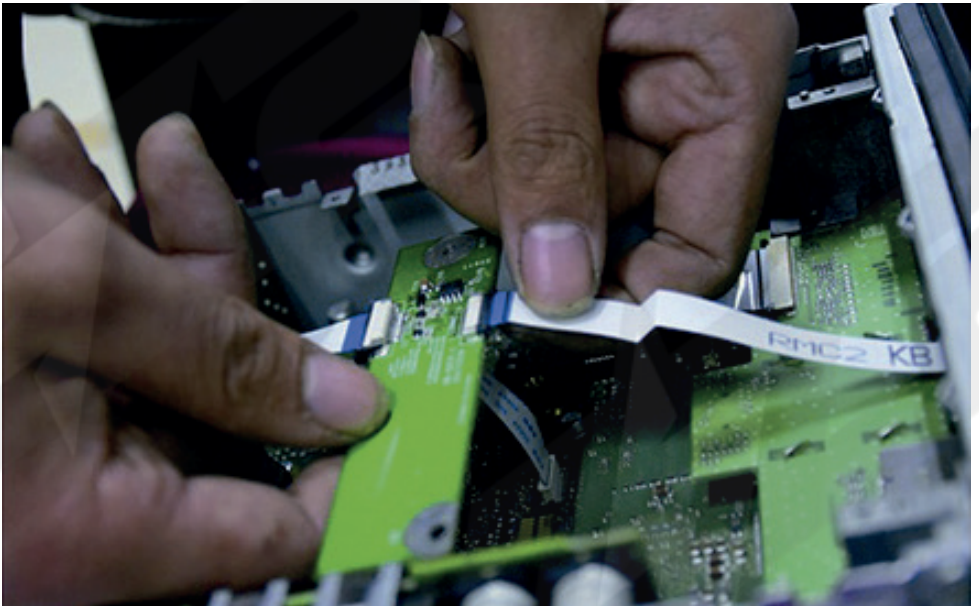
Install the smaller sub board at the back of the radio, as shown on the picture above



Install the ribbon cables



Remove those 2 screws marked with the red circle and install the copper mounts. Disconnect the factory ribbon cable connected at the center of the mother board.



Place the second sub board provided with the kit right on top of the copper mounts. The ribbon coming from the ZZ-2 sub board goes to the mother board of the radio and the factory ribbon goes to the ZZ-2 sub board.



Put the screws back in order to secure the board inside the radio



Put the CD reader back in the radio and screw everything back together.

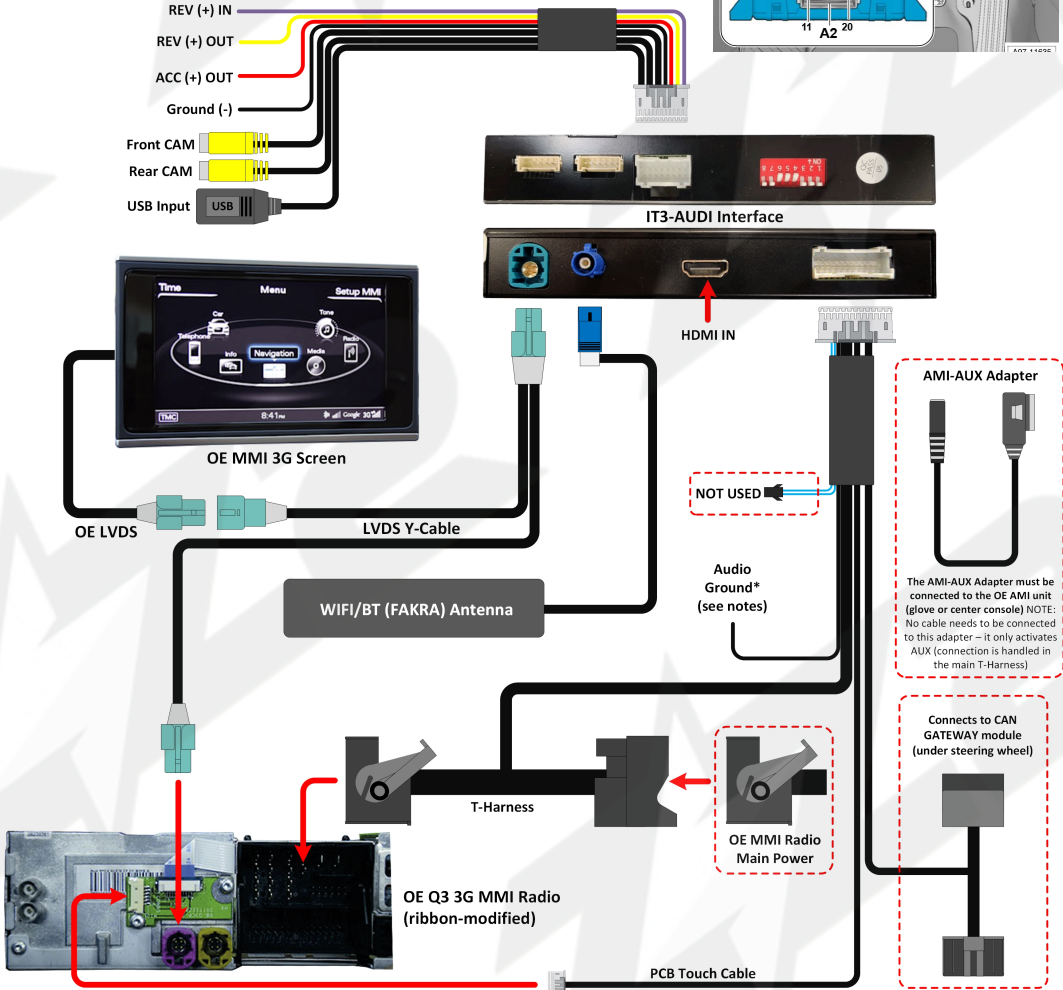
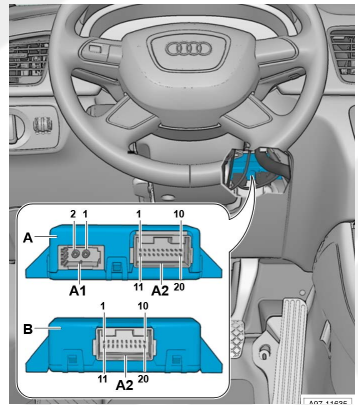


### 3.1 Installation Diagram:

GATEWAY LOCATION:  
Underneath steering  
wheel

**Notes:**

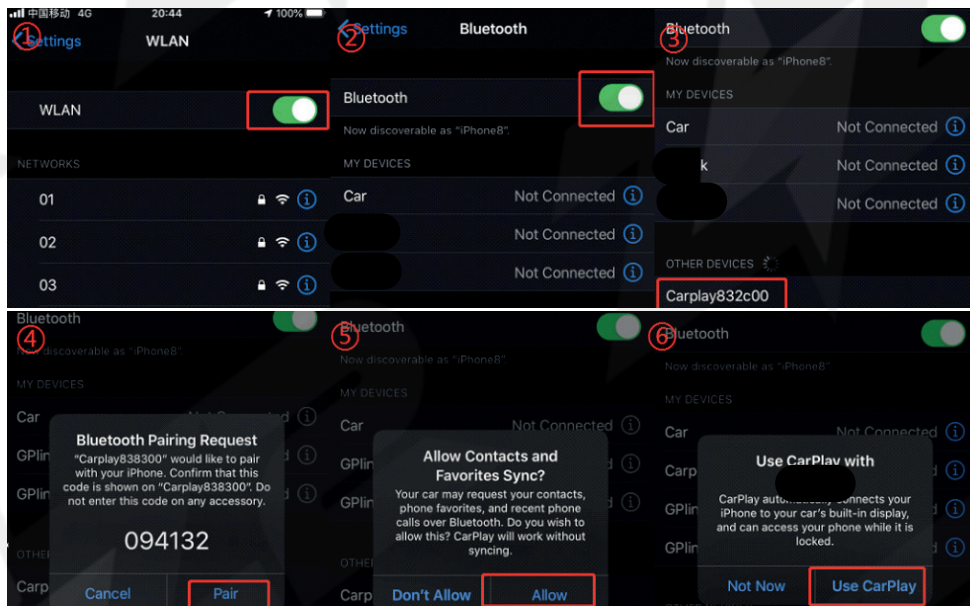
- \*Only ground this Audio Ground wire if there is no audio output or noise in the audio when using AUX.
- If the car is equipped with fiber optic (in the quad-lock connector), remove from the factory plug and reconnect into the radio side of the provided quad-lock connector.
- See next page for AC Controller variants.



## 4 – How to connect CarPlay

Press "MENU" or "NAV" to access CarPlay and follow the steps below:

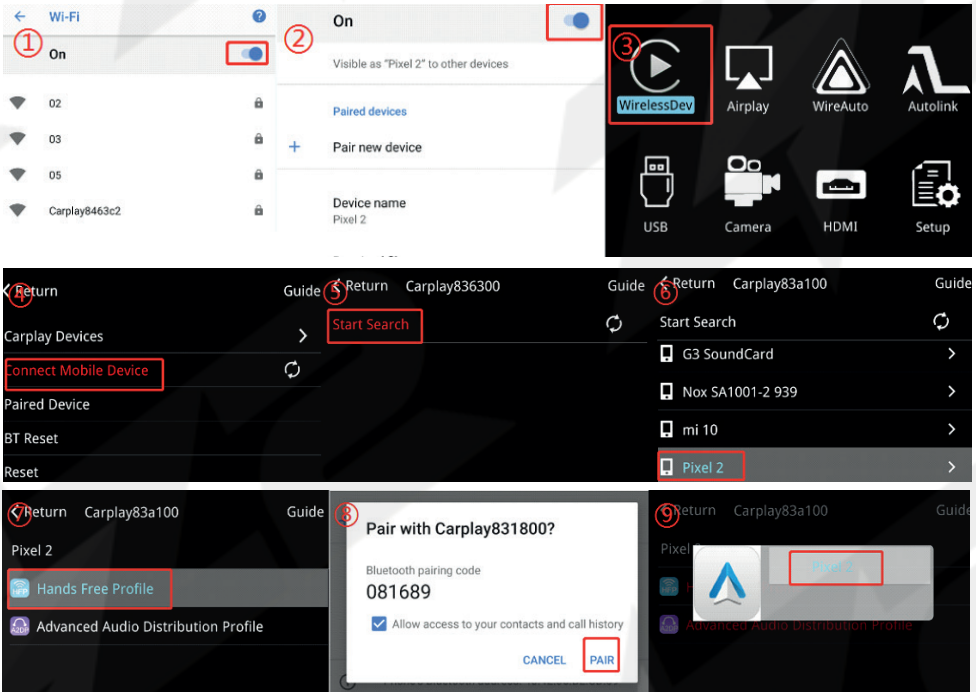
- 1,2 - Make sure the WiFi and Bluetooth is ON
- 3 - Once CarPlay\*\*\*\*\* shows up on the list of the new Devices, please select it.
- 4 - A notification will be pop up on the screen, please select "PAIR"
- 5 - And then select "ALLOW"
- 6 - To finish the process select "USE CARPLAY"



## 5 How to connect to Android Auto

Press "MENU" or "NAV" to access CarPlay and follow the steps below:

- 1,2 – Make sure the WiFi and Bluetooth is ON and stay at the Bluetooth screen to search for devices
- 3 – Select "WirelessDev" option on the Interface's Menu
- 4 – Select "Connect Mobile Device"
- 5 – Select "Start Search" to find the phone
- 6 – Select the phone
- 7 – On the phone a notification will be displayed in order to pair with the Android Auto interface.  
Select the option to PAIR
- 8 – On the radio screen a notification with the phone model will be displayed. To complete the process select the phone using the vehicles controls.



## AUDIO SETUP

\*As of sw version 3.6.13, Please access the Main Menu of the Interface, by selecting the yellow **ZZPLAY** tile, and then go to **SETUP > USING CAR'S BT CHANNEL** and make sure that option is **ON**. Then go back to the main screen and **RETURN** to CarPlay/Android Auto. **On the phone, please make sure the device is paired with the factory AUDI Bluetooth as well.**

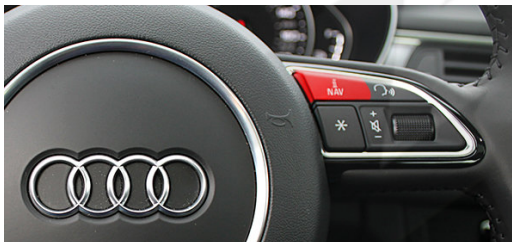
Once this (above) setting is active, use OEM Bluetooth Audio (streaming) for all audio from CarPlay/AA.

**SIRI & GOOGLE ASSISTANT** is activated by using the controls on the center console (next page)

# User Guide



1. **Center Knob:** used to confirm selection. (Press and HOLD for SIRI activation)
2. **MENU:** Press and release to go back to the Main Menu or press and hold for 10 seconds to reset all settings
3. **RETURN:** Press and release to go the previous option/screen
4. Short press "UP" it goes up on the menu
5. Short press "DOWN" it goes down on the menu
6. Moves selection to the left
7. Moves selection to the right
8. **NAV or iNAV:** Push and hold NAV button to access CarPlay/ Android Auto and to go back to the factory screen. Same vehicles use the **iNAV** button on the steering wheel controls.





[support@zz-2.com](mailto:support@zz-2.com)

929-220-1212

Toll free: 877-241-2526

Extension 2: Tech Support

Agreement: End user agrees to use this product in compliance with all State and Federal laws. ZZDOIS LLC dba ZZ-2 is not to be held liable for misuse of its product. If you do not agree, please discontinue use immediately and return product to retailer. This product is intended for off-road use and passenger entertainment only.

Before installation of any ZZ-2 LLC products, users must fully read and understand the manual. By installing and/or using the product you agree to be bound by the following terms and conditions: *In no respect shall ZZ-2 LLC incur any liability for any damages, including, but limited to, direct, indirect, special, or consequential damages arising out of, resulting from, or any way connected to the use of ZZ-2 LLC products whether or not based upon warranty, contract, tort, or otherwise; whether or not injury was sustained by persons or property or otherwise; and whether or not loss was sustained from, or arose out of, the results of, the item, or any services that may be provided by ZZ-2 LLC.*