

1 Find a Location for Tour and Mount it

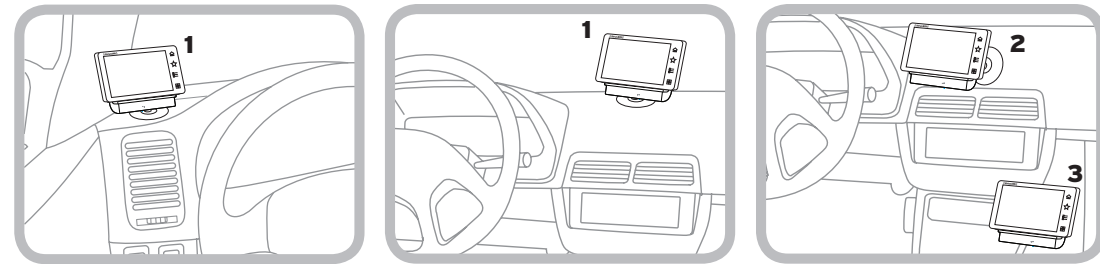
Select either the **Dash Mount** method or the **Vent Mount** method for your Tour. You will need a phillips-head screwdriver to complete the installation.

IMPORTANT! To make the cable connections easier, wait until after you have connected all the cables to the dock before you attach the dock to the dash or to a vent.

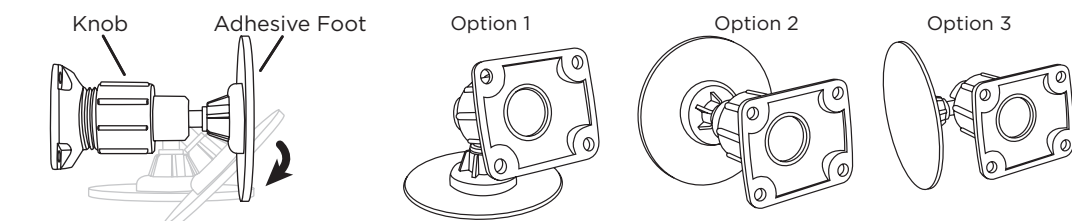
Dash Mount Method:

IMPORTANT! The air temperature needs to be at least 60°F to install the Dash Mount. If needed, turn on the heater in your vehicle.

- A. Select a flat surface for the Dash Mount with ample room for Tour. Avoid mounting on leather surfaces. Choose a location that doesn't interfere with the driver's vision or access to driving controls, one that won't interfere with the deployment of airbags or other safety equipment, and makes Tour easily accessible for operation. (Airbag locations are typically marked with "SRS" logos.)



- B. Orient the adhesive foot so that Tour is easily accessible. Loosen the knob and adjust the adhesive foot to position **1**, **2**, or **3**, and then tighten it.



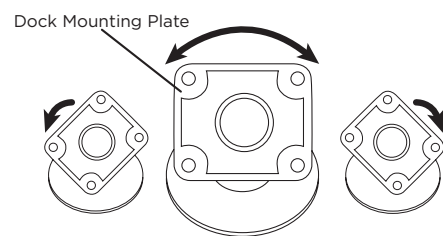
- C. Attach the Dash Mount to the *PowerConnect* Vehicle Dock using the 4 provided screws.

- D. Before you attach the Dash Mount to the dash, skip ahead and finish the remainder of the vehicle installation so that the cables are attached to the dock.

- E. Once the cables have been attached to the dock, clean the mounting surface in the vehicle with the alcohol preparation pad and let it dry thoroughly.

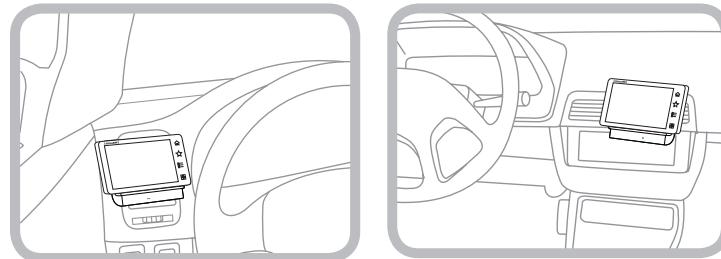
- F. Once the surface is dry, remove the adhesive liner. Press and hold the Dash Mount in place for 30 seconds. Allow the adhesive to cure for 2-4 hours.

- G. You can tilt the dock mounting plate in your preferred direction.



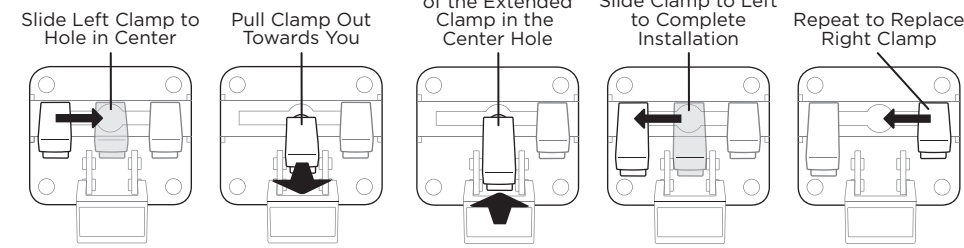
Vent Mount Method:

- A. Select a vent with ample room for Tour, one that won't interfere with the deployment of airbags or other safety equipment, and makes Tour easily accessible for operation. (Airbag locations are typically marked with "SRS" logos.)



- B. Some vents have recessed louvers. If yours are recessed, remove the regular vent clamps and install the extended vent clamps.

Vent Mount Rear View



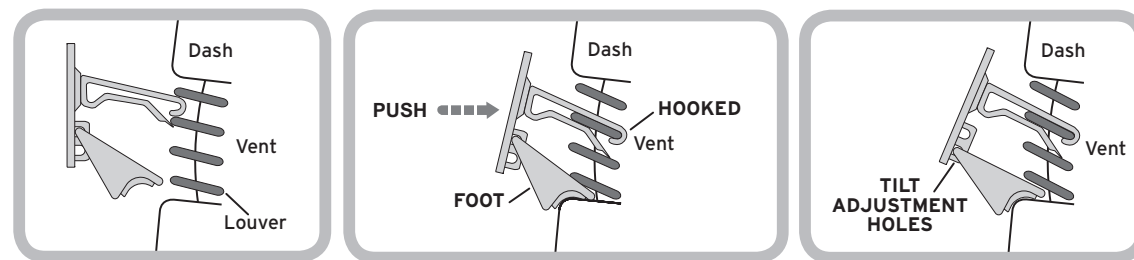
Round End → Orientation ←

- C. Attach the Vent Mount to the *PowerConnect* Vehicle Dock using the 4 provided screws.

- D. Before you attach the Vent Mount to the vent, skip ahead and finish the remainder of the vehicle installation so that the cables are attached to the dock.

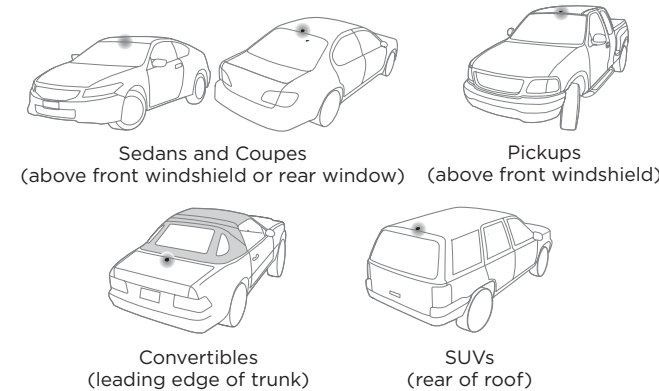
- E. Once the cables have been attached to the dock, install the Vent Mount onto the vehicle vent. (Note that for clarity the illustrations below do not show the Vehicle Dock attached to the Vent Mount.)

- i. Insert the vent mount into the vent opening.
- ii. Push until hooked on the rear of the vent louver. Rest the foot against the bottom of the vent.
- iii. If necessary, adjust the tilt of the Vent Mount by repositioning the foot to a different tilt adjustment hole.



2 Mount the Magnetic Mount Antenna

- A. Mount the Magnetic Mount Antenna outside your vehicle, on a clean and dry horizontal surface that will always face the sky.
- B. Choose the location for the antenna according to your type of vehicle. Center it between the left and right sides, and away from other antennas.



TIP: Use the Alcohol Prep Pad to clean the surface.

3 Route the Antenna Cable

NOTE: These instructions are for a sedan or coupe where the antenna is mounted above the front windshield. The Tour User Guide (with Vehicle Kit) has detailed antenna cable routing instructions for all types of vehicles. Go to www.siriusxm.com/guides for the User Guide.

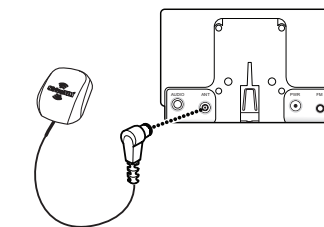
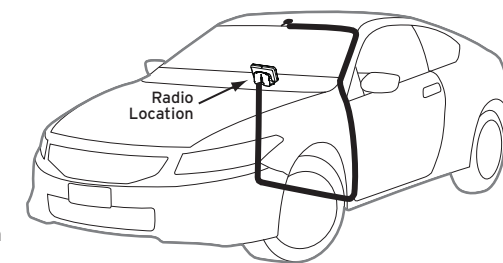
- A. Tuck the antenna cable under the windshield rubber molding and run it to the nearest corner.

- B. Route the cable out of the molding and into the rubber weather stripping around the door opening.

- C. Lift the weather stripping. Tuck and run the cable inside it to the bottom of the door opening. Replace the weather stripping.

- D. Pull the cable out and route it to Tour.

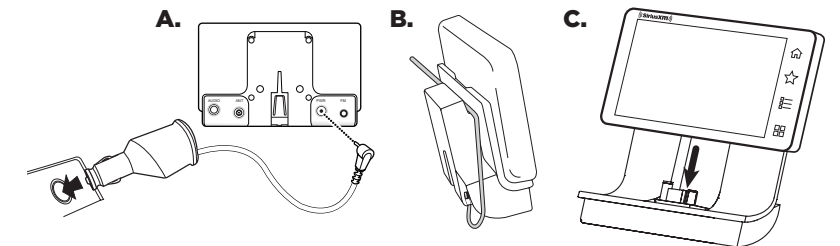
- E. Plug the Magnetic Mount Antenna connector into the **silver ANT** connector at the rear the *PowerConnect* Vehicle Dock.



TIP: Include enough slack in your routing to accommodate open doors or the hood lid. Coil any excess cable in a hidden location and keep it away from any vehicle pedals or controls.

4 Connect the PowerConnect Power Adapter

- A. Insert the *PowerConnect* Power Adapter into your vehicle's cigarette lighter or power adapter socket. Plug the other end into the **red PWR** connector at the rear of the *PowerConnect* Vehicle Dock.
- B. Use the wire guide on the top of the dock to organize the wires connected to the dock.
- C. Place Tour into the dock.



5

Specifications

System	Power Requirements: 9-16 V DC, 500 mA (max) Operating Temperature: -4°F to +140°F (-20°C to +60°C) Audio Output: 1.0 Wrms (max)
Tour Radio	Dimensions: 4.7 in (W) x 2.9 in (H) x 0.7 in (D) 119 mm (W) x 74 mm (H) x 18 mm (D) Weight: 5.0 oz (142 g)
PowerConnect Vehicle Dock	Dimensions: 4.0 in (W) x 2.4 in (H) x 1.2 in (D) 102 mm (W) x 61 mm (H) x 31 mm (D) Weight: 1.6 oz (46 g) Audio Connector: 1/8 in (3.5 mm) female Antenna Connector: SMB male
PowerConnect Power Adapter	Dimensions: 3.7 in (W) x 1.7 in (H) x 1.3 in (D) 94 mm (W) x 43 mm (H) x 34 mm (D) Weight: 2.4 oz (69 g) Input / Output: 9-16 V DC / 5 V DC, 1.5 A Cable Length: Approximately 4.6 ft (1.4 m)
Vehicle Antenna	Type: SiriusXM Magnetic Mount Connector: SMB female, right angle Cable Length: Approximately 23 ft (7.0 m)
Aux In Cable	Connectors: 1/8 in (3.5 mm) stereo male to 1/8 in (3.5 mm) stereo male Cable Length: Approximately 4 ft (1.2 m)

3 MONTHS FREE SERVICE
of our All Access Subscription Package
\$65 Value
See Offer Details on the Important Legal Information page.
Activation Fee and credit card required.

QUICK START GUIDE

SATELLITE RADIO WITH 360 L

TOUR



Self installation instructions and tips are provided for your convenience. It is your responsibility to determine if you have the knowledge, skills and physical ability required to properly perform an installation. SiriusXM shall have no liability for damage or injury resulting from the installation or use of any SiriusXM or third party products. It is your responsibility to ensure that all products are installed in adherence with local laws and regulations and in such a manner as to allow a vehicle to be operated safely and without distraction. SiriusXM product warranties do not cover the installation, removal or reinstallation of any product.

Sirius XM Radio Inc.
1290 Avenue of the Americas
New York, NY 10104

siriusxm.com

1.866.635.2349

© 2020 Sirius XM Radio Inc.

SXWB1V1QSG 200331a

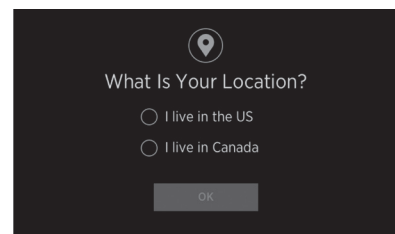
5 Finish the Installation Using the Setup Guide

For the remaining portion of the installation you will use the Setup Guide in the Radio. The setup guide will provide a step-by-step process for:

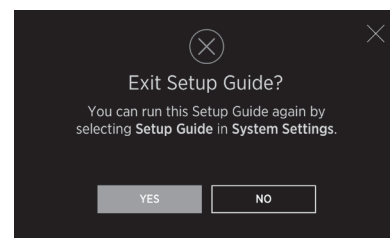
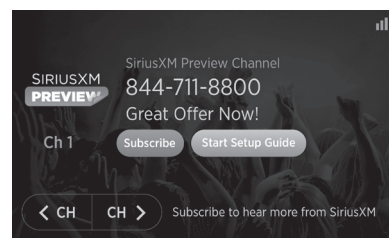
- Getting a good satellite signal (if the Radio is not receiving a good satellite signal)
- Connecting to a Wi-Fi hotspot (for Internet streaming)
- Connecting the audio (Bluetooth, AUX, or FM)
- Subscribing the Radio (if you have not yet done so)
- Authorizing the Radio for the SiriusXM satellite and Internet streaming services

To complete the installation using the Setup Guide:

- Turn the Radio on by pressing the **Power** button on the back of the radio.
- The Radio will display the **What is Your Location** screen the first time it is powered on. Select your location and tap the **OK** button.



- The Now Playing screen will be displayed next. Tap the orange **Start Setup Guide** button to begin the step-by-step setup. (If you do not tap this button within 10 seconds the **Radio Not Authorized for Service** screen will be displayed. Simply tap the **NO** button to return to the Now Playing screen and start the setup guide.)



- Note that you can exit the Setup Guide at any time by tapping the **X** in the upper right corner of any screen. (You can start the Setup Guide again by tapping the **Settings** button (the four small squares at the lower right of the Radio bezel), then tap the **Manage Settings** button, then tap the **Setup Guide** button.)

Connecting to a Wi-Fi Hotspot

When you get to the step in the setup guide where you will connect to a Wi-Fi hotspot, and you are unfamiliar with how to turn on a Wi-Fi hotspot in your phone or other device, here are general instructions for iOS and Android devices. Please note that the exact steps in your device may differ depending on the model.

Establishing an iOS Wi-Fi Hotspot

- On the iOS device, tap **Settings**.
- In Settings, tap **Personal Hotspot**.
- Tap the **Personal Hotspot** slider to turn on the hotspot. The slider will turn green indicating the hotspot is on.
- Make a note of the Wi-Fi password and the name of the iOS device which will be the name and password of the Wi-Fi hotspot. This will be needed when connecting the Radio to the hotspot.
- Exit the phone settings. The Wi-Fi hotspot is now on and ready for the Radio to connect.
- Continue with the setup guide.

Establishing an Android Wi-Fi Hotspot

- On the Android device, swipe down from the top of the screen and tap the **Settings** icon.
- In Network & Internet, tap **Hotspot & tethering**.
- In Hotspot & tethering, tap **Wi-Fi hotspot**.
- In Wi-Fi hotspot, tap the **Off slider** to turn on the hotspot. The slider will then indicate the hotspot is on.
- Tap **Hotspot password** and enter a password. Tap **OK**. Make a note of the Wi-Fi password and the Wi-Fi hotspot name. This will be needed when connecting the Radio to the hotspot.
- Exit the phone settings. The Wi-Fi hotspot is now on and ready for the Radio to connect.
- Continue with the setup guide.

TIP: The User Guide is available at siriusxm.com/guides.

! Important Legal Information

Copyrights and Trademarks

© 2020 Sirius XM Radio Inc. SiriusXM, Automatic, Pandora and all related logos are trademarks of Sirius XM Radio Inc. and its respective subsidiaries. All other marks, channel names and logos are the property of their respective owners. All rights reserved. All rights reserved. The Bluetooth® word mark and logos are registered trademarks owned by Bluetooth SIG, Inc.

Offer Details

SUBSCRIPTION OFFER DETAILS: A \$15 Activation Fee and credit card are required for this offer. Purchase and activate any eligible receiver from an eligible retailer with a monthly All Access subscription and receive your first 3 months free (a \$21.99/mo savings). Fees and taxes apply. **You must cancel within the first 3 months to avoid being charged. Service will automatically renew thereafter and, at the beginning of the 4th month, you will be charged according to the billing plan you choose at then-current rates. Please see our Customer Agreement at www.siriusxm.com for complete terms and how to cancel, which includes calling SiriusXM at 1-866-635-2349. All fees, content, and features are subject to change. This offer cannot be combined with any other and can be modified or terminated at any time. See subscription offer details at siriusxm.com/nevermissabeat.**

Important Legal Notice About Your Subscription

Hardware and subscription sold separately. **Service will automatically renew into the subscription Package you choose (which may differ from the Package which arrived with the Radio), and will automatically bill at then current rates, after any complimentary trial or promotional period ends, until you call us at 1-866-635-2349 to cancel.** See our Customer Agreement for complete terms at www.siriusxm.com. Fees and taxes apply. All fees and programming subject to change. Our satellite service is available only to those at least 18 and older in the 48 contiguous USA and DC. Our Sirius satellite service is also available in PR (with coverage limitations) **but this radio is not operational in PR.** Our streaming service is available throughout our satellite service area and in AK and HI.

FCC Statement

The user is cautioned that changes or modifications not expressly approved by Sirius XM Radio Inc. can void the user's authority to operate this device. This device complies with Part 15 of the FCC Rules. Operation is subject to the following two conditions: 1. This device may not cause harmful interference. 2. This device must accept any interference received, including interference that may cause undesired operation. This equipment has been tested and found to comply with the limits for a Class B digital device, pursuant to Part 15 of the FCC Rules. These limits are designed to provide reasonable protection against harmful interference in a residential installation. This equipment generates, uses, and can radiate radio frequency energy and, if not installed and used in accordance with the installation instructions, may cause harmful interference to radio communications. However, there is no guarantee that interference will not occur in a particular installation. If this equipment does cause harmful interference to radio or television reception, which can be determined by turning the equipment off and on, the user is encouraged to try to correct the interference by one or more of the following measures: •Reorient or relocate the receiving antenna of the affected receiver. •Increase the separation between the SiriusXM equipment and the affected receiver. •Connect the SiriusXM equipment into an outlet on a circuit different from that to which the affected receiver is connected. •Consult the dealer or an experienced radio/TV technician for help.

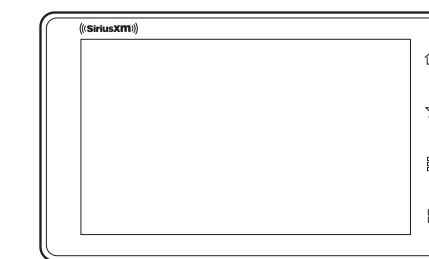
WARNING! The FCC and FAA have not certified this Satellite Radio Receiver for use in any aircraft (neither portable nor permanent installation). Therefore, Sirius XM Radio Inc. cannot support this type of application or installation.

WARNING: Cancer and Reproductive Harm - www.P65Warnings.ca.gov.

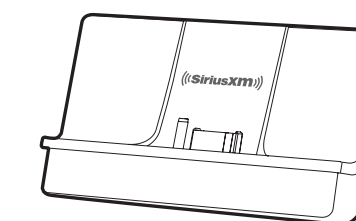


? What's in the Box?

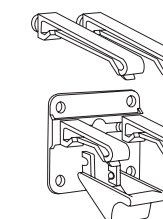
CAUTION: Do not attempt to install, activate, or adjust any of the setting options described in this Quick Start Guide unless your vehicle is parked in a safe location.



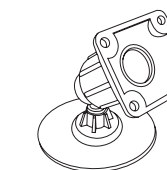
Tour Radio



PowerConnect™ Vehicle Dock



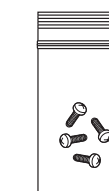
Vent Mount and
Extended Vent Clamps



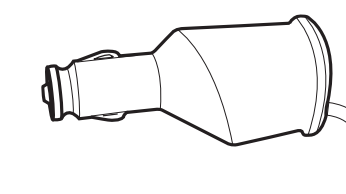
Dash Mount



Antenna & Dash Mount
Alcohol Preparation Pads



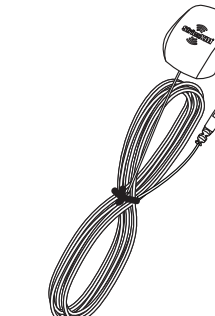
Screws (4)



PowerConnect Power
Adapter



Aux In Cable



Magnetic Mount
Antenna