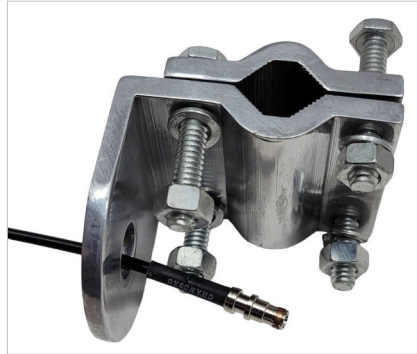


SXMT50 Mounting Instructions

The SXMT50 will install directly to a ProComm mirror arm mount.
For installing the antenna to a standard mirror arm follow the instructions below.

INSTALLATION INSTRUCTIONS

1) Unwrap and straighten the antenna cable then fish the wire through the hole in the antenna bracket as shown in figure 1.



2) Feed the cable through the mount and push the mount flush to the base of the antenna spring. Be sure to not kink the cable while pushing it through the mounting base.



3) Fish the nut onto the antenna cable. Be sure to have the smaller round end facing towards the base of the antenna mount as this part of the nut will secure to the base of the spring.



4) Insert the nut into the hole in the mounting bracket and onto the base of the spring. Be sure the base of the spring is flush with the mounting base before tightening the nut. For a more secure install add a small amount of Loctite to the nut.



SXMT50