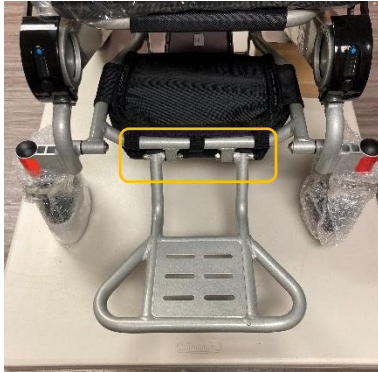


**CITY Foldable Power Chair
Adjustable Footplate Set-Up Guide**



Pinpoint the 2 bolts that fasten the footrest to the frame.

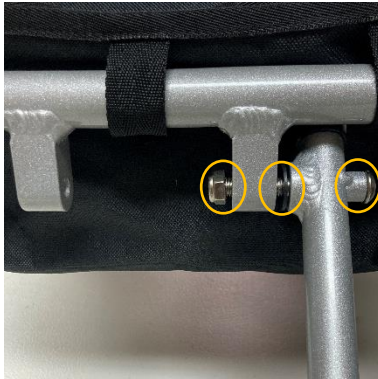


Tools required

- 5mm Alley Key
- ½ in Bolt socket



With the old footrest removed. Place both adjustable legs with the drilled holes facing out



Follow the photo above for correct order of Installation

- 1 - Bolt**
- 1 - Washer**
- 1 - Nut**



Repeat the same steps for the following side.

Tighten each side sufficiently



Pull the 2 black tabs situated on the footrest

Give a slight jiggle to allow the footrest to slide into its correct position



Common Questions

- a) Hard to move? Try loosening the 2 Bolts slightly**
- b) Footrest is loose and floppy? Tighten the 2 Bolts until firm.**